

MAIDENHEAD METEOROLOGICAL OBSERVATIONS FOR MAY 2005

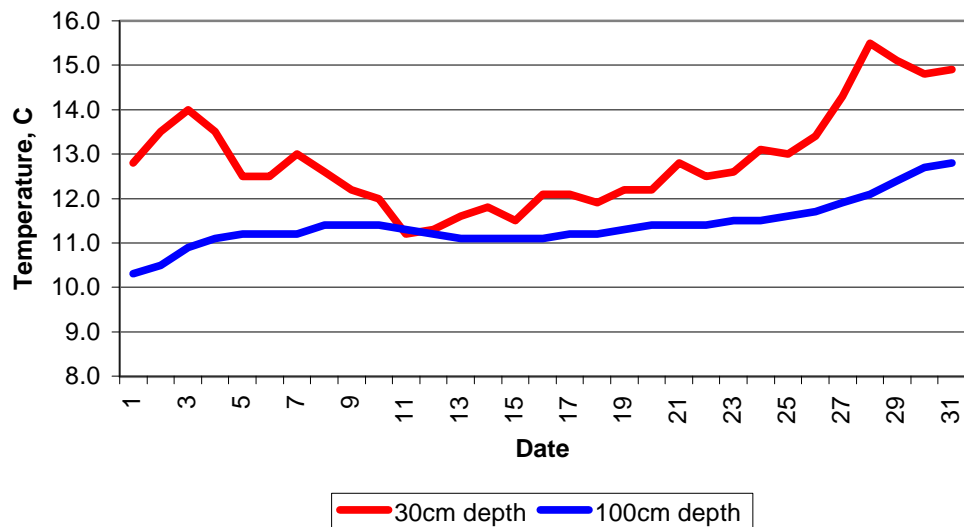
		0900GMT		Temperature		Soil temperatures (depth in cm)																				Rain	Fr.	Pch							
DD	N	dd	ff	ww	VV	Temp	RH	Max	Min	Gmin	5	10	20	30	50	100	E	SS	Rain	Sun	S	L	H	T	G	F	Press	hrs	hrs	Evap					
01	7	18	02	02	97	18.0	82	24.5	15.0	11.0	14.0	13.7	13.5	12.8	11.5	10.3	10	0	0.0	8.1	0	0	0	1	0	0	1007.0	0.0	0.0	2.6	Number of				
02	7	10	09	02	97	16.9	73	21.8	12.8	11.2	14.5	14.2	14.3	13.5	12.1	10.5	10	0	0.1	8.6	0	0	0	0	0	0	1010.0	0.3	0.0	2.4	days with				
03	7	22	05	02	97	14.7	93	17.6	10.6	8.9	12.8	13.4	14.1	14.0	12.5	10.9	10	0	1.3	3.5	0	0	0	0	0	0	1010.0	3.2	0.0	1.2	2005 normal				
04	8	32	09	21	97	11.0	87	12.1	11.0	9.7	13.2	13.3	13.7	13.5	12.5	11.1	10	0	tr	0.9	0	0	0	0	0	0	1017.0	0.0	0.0	0.8	Snow/sleet falling				
05	8	22	05	03	97	11.3	76	19.0	2.7	1.9	9.6	9.9	11.5	12.5	12.2	11.2	10	0	0.0	5.1	0	0	0	0	0	0	1024.0	0.0	0.0	2.7	0 0.1				
06	7	23	09	60	97	14.7	48	17.8	11.1	6.7	11.8	11.8	12.4	12.5	11.8	11.2	10	0	0.1	8.6	0	0	0	0	0	0	1019.0	0.2	0.0	2.4	50% snow cover 09GMT				
07	1	27	13	01	97	12.0	57	15.6	10.1	8.2	12.2	12.1	13.0	13.0	12.2	11.2	10	0	tr	11.5	0	0	0	0	0	0	1012.5	0.0	0.0	2.5	0 0.0				
08	1	29	09	02	97	12.2	72	16.2	3.7	3.2	9.4	9.9	11.5	12.6	12.2	11.4	10	0	0.1	11.8	0	0	5	0	0	0	1015.0	0.3	0.0	2.2	Hail or ice pellets				
09	0	31	05	02	97	11.7	57	13.7	3.2	1.4	8.6	9.3	11.6	12.2	12.2	11.4	10	0	0.1	7.8	0	0	0	0	0	0	1016.0	0.1	0.0	2.5	1 0.5				
10	1	33	05	02	96	10.1	60	13.8	2.8	0.8	7.8	9.2	10.9	12.0	11.6	11.4	10	0	0.1	6.7	0	0	0	0	0	0	1022.5	0.2	0.0	1.2	Thunder				
11	1	36	02	02	97	9.4	66	14.2	1.2	0.3	7.3	8.1	10.2	11.2	11.6	11.3	10	0	0.0	8.7	0	0	0	0	0	0	1027.0	0.0	0.0	2.2	1 1.9				
12	1	04	05	02	97	11.5	58	15.8	3.6	0.6	8.3	8.3	10.4	11.3	11.5	11.2	90	0	0.0	12.7	0	0	0	0	0	0	1023.0	0.0	0.0	3.4	Gale				
13	7	04	13	02	97	12.2	66	17.4	6.9	4.8	9.4	9.6	10.7	11.6	11.2	11.1	90	0	0.0	8.4	0	0	0	0	0	0	1020.0	0.0	0.0	3.2	0 0.0				
14	7	05	09	02	97	10.0	74	15.9	6.8	6.1	10.0	10.3	11.4	11.8	11.5	11.1	90	0	0.0	1.4	0	0	0	0	0	0	1017.5	0.0	0.0	2.6	Fog at 09GMT				
15	7	09	02	02	97	13.1	70	19.1	2.7	0.1	10.0	9.7	10.7	11.5	11.5	11.1	90	0	0.0	12.7	0	0	0	0	0	0	1019.5	0.0	0.0	2.6	0 0.0				
16	7	27	02	02	97	14.8	62	18.0	7.4	5.0	11.2	11.4	12.2	12.1	11.7	11.1	90	0	2.8	1.4	0	0	0	0	0	0	1014.5	4.5	0.0	1.6	Air frost				
17	5	35	05	02	97	9.1	62	13.8	4.5	2.8	8.9	9.9	11.5	12.1	11.8	11.2	10	0	0.0	9.2	0	0	0	0	0	0	1020.5	0.0	0.0	2.0	0 0.1				
18	4	22	02	02	97	13.8	60	16.1	4.2	1.7	9.6	9.9	11.3	11.9	11.6	11.2	10	0	1.1	6.0	0	0	0	0	0	0	1021.5	2.2	0.0	2.5	Ground frost				
19	8	18	05	21	97	12.7	92	14.7	9.5	7.9	11.6	11.6	12.3	12.2	11.8	11.3	10	0	2.7	0.5	0	0	0	0	0	0	1015.5	4.0	0.0	0.7	0 2.2				
20	8	18	09	02	97	14.0	90	18.5	12.7	11.6	12.8	12.7	12.6	12.2	11.9	11.4	10	0	0.0	5.0	0	0	0	0	0	0	1010.0	0.0	0.0	1.4	0.2mm precipitation				
21	7	20	02	02	97	12.1	88	15.8	8.8	5.9	12.2	12.2	12.8	12.8	12.1	11.4	10	0	24.6	4.0	0	0	0	0	0	0	1008.5	2.7	0.0	1.5	7 12.2				
22	7	24	09	02	97	13.0	73	16.9	9.5	6.8	11.8	11.7	12.1	12.5	11.9	11.4	10	0	tr	4.5	0	0	0	0	0	0	1006.5	0.0	0.0	2.0	1.0mm precipitation				
23	1	18	09	02	97	14.4	62	18.0	6.3	4.1	10.6	11.1	12.3	12.6	12.2	11.5	10	0	0.2	10.1	0	0	0	0	0	0	1013.5	0.0	0.0	2.8	5 8.8				
24	8	22	05	60	96	12.3	82	18.5	11.1	8.1	12.2	12.2	13.0	13.1	12.3	11.5	10	0	0.5	6.8	0	0	0	0	0	0	1014.5	2.4	0.0	1.6	5.0mm precipitation				
25	8	21	02	02	97	15.3	91	21.7	10.9	10.0	13.1	12.8	13.0	13.0	12.4	11.6	10	0	0.0	3.0	0	0	0	0	0	0	1021.0	0.0	0.0	1.8	1 2.9				
26	7	22	02	02	96	20.6	64	23.6	12.0	10.1	13.4	13.3	13.6	13.4	12.4	11.7	10	0	0.0	4.1	0	0	0	0	0	0	1015.0	0.0	0.0	1.8	No sunshine				
27	5	15	02	02	97	21.9	72	30.2	12.9	10.9	14.6	14.6	14.9	14.3	12.9	11.9	00	0	0.0	14.1	0	0	0	0	0	0	1011.5	0.0	0.0	4.5	0 2.8				
28	6	22	13	03	97	18.1	70	19.7	14.7	12.9	15.6	15.6	16.0	15.5	13.9	12.1	00	0	0.0	10.3	0	0	0	0	0	0	1011.5	0.0	0.0	2.7	30.2C on the 27th was the				
29	8	27	02	02	97	14.8	76	18.0	7.5	6.9	13.3	13.7	15.0	15.1	14.1	12.4	00	0	0.0	2.5	0	0	0	0	0	0	1020.0	0.0	0.0	2.0	highest May temperature				
30	4	31	05	02	97	17.1	63	19.5	9.7	8.0	13.9	13.9	14.8	14.8	14.2	12.7	00	0	0.0	11.4	0	0	0	0	0	0	1020.0	0.0	0.0	2.4	since before 1953 locally. A				
31	6	27	05	02	97	16.4	55	21.8	7.1	5.1	12.6	13.1	14.6	14.9	14.2	12.8	00	0	0.0	10.7	0	0	0	0	0	0	1025.0	0.0	0.0	2.0	generally dry month apart				
Monthly means						13.8	71	18.0	8.2	6.2	11.5	11.7	12.6	12.9	12.2	11.4											1016.4					from a notable 24.6mm on			
Monthly totals																				33.7	220.1							20.1	0.0	67.8		the 25th - the wettest May			
Highest values						21.9		30.2	15.0	12.9	15.6	15.6	16.0	15.5	14.2	12.8				24.6	14.1							4.5	0.0	4.5		day since 1985. Low grass			
Lowest values						9.1	48	12.1	1.2	0.1	7.3	8.1	10.2	11.2	11.2	10.3																		minimum temperatures mid-	
1971-2000 climatological averages						73	17.4	8.0	5.6	11.0	11.2	12.4	12.4	11.5	10.5						50.9	187.6							1015.9	37.2	0.1	69.1		month caused some ground	
																																		frosts around the town, and	
																																			damage to young crops
																																			resulted.

PTO

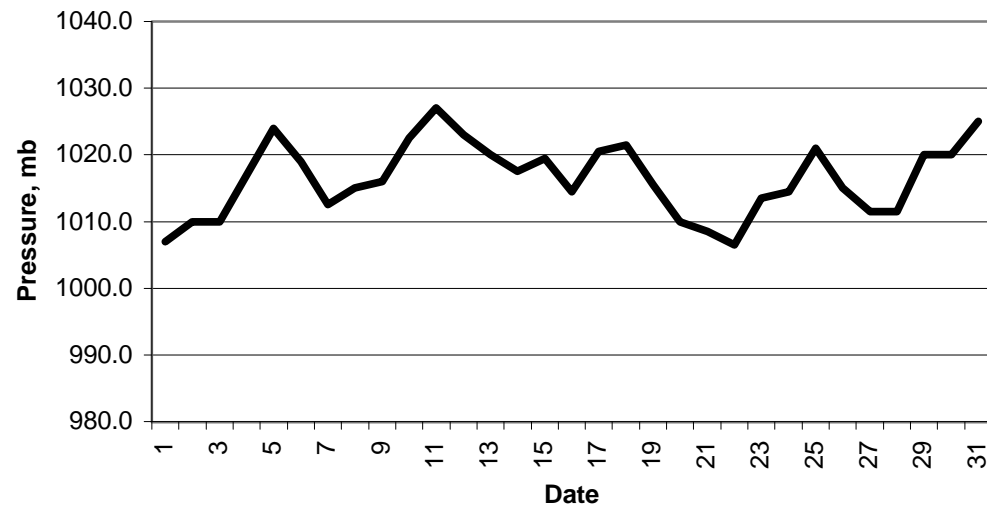
Key
 DD: date
 07GMT observations
 N cloud cover (oktas, 9=obscured) dd wind direction (degrees/10)
 ff wind speed (knots)
 ww present weather code
 1 cloud decreasing 60 intermttent slight rain
 2 sky not changing 61 continuous slight rain
 3 cloud increasing
 21 recent rain shower
 25 recent rain shower
 VV visibility (00-50 metres/100, 94 very poor, 95 poor, 96 moderate, 97 good)
 Soil temperatures are for 0700GMT beneath bare soil (5, 10, 20cm) or grass (30, 50, 100cm)
 09GMT observations
 Temp temperature (degC) RH relative humidity (%)
 E state of ground (00 dry, 10 moist, 20 wet, 90 cracked) SS snow depth (cm)
 Press air pressure (mb)
 24 hour readings
 Max maximum temperature (degC) beginning 09GMT Min minimum temperature (degC) ending 09GMT
 Gmin grass minimum temperature (degC) ending 09GMT Rain precipitation beginning 09GMT
 Sun sunshine (hours) sunrise-sunset Rain hrs hours of rainfall (>0.1mm/h) 09-09GMT
 Fr. Hrs hours of air frost (00-24GMT) Pch Evap Piche evaporation (ml) beginning 09GMT
 Days with
 S snow(5) or sleet(1) falling L 50% snow cover at 09GMT H hail or ice pellets
 T thunder heard G gale F fog at 09GMT

This information (and data for earlier months) is also available at <http://www.met.rdg.a.uk/~brugge>

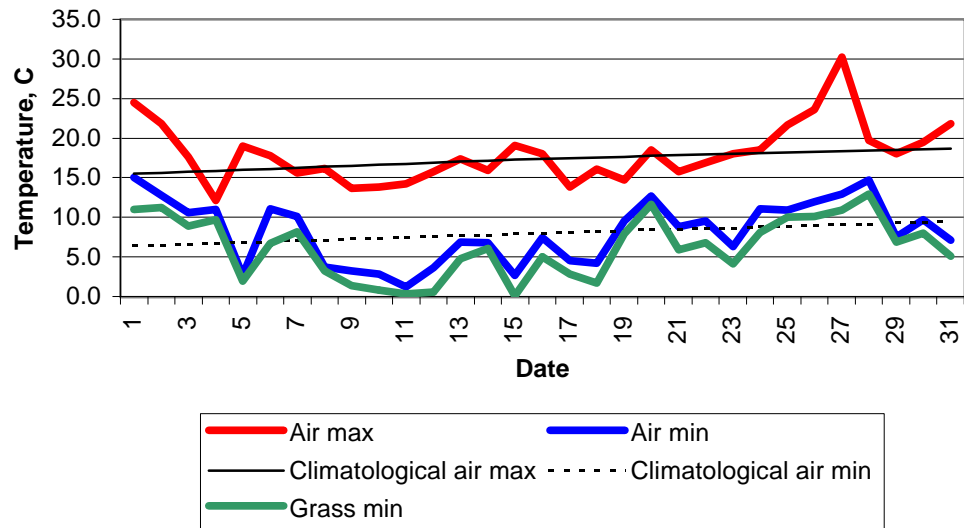
Daily soil temperatures, 0700GMT



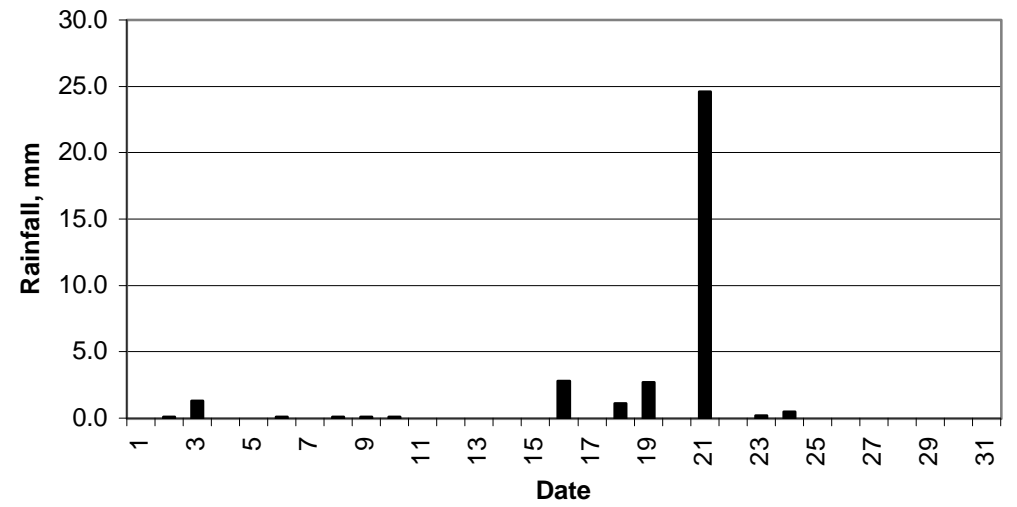
Mean sea level pressure, 0900GMT



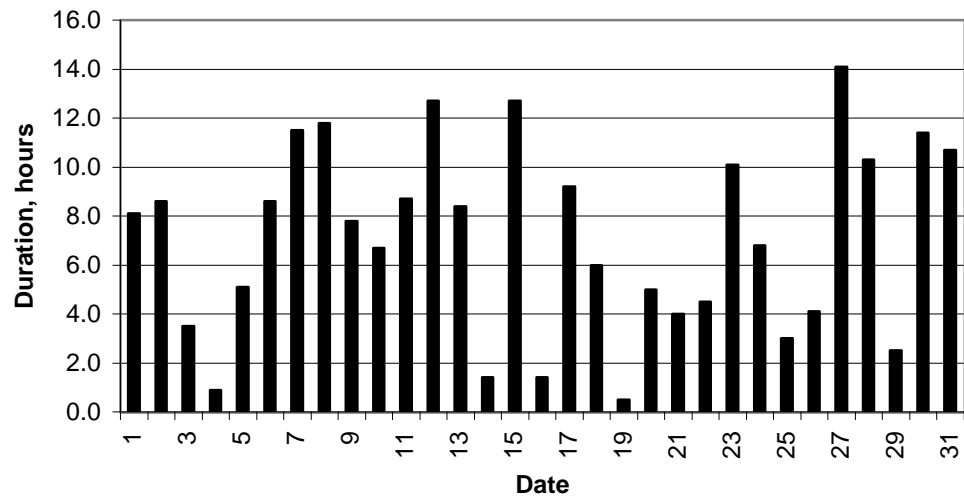
Daily temperature extremes



Daily rainfall



Daily sunshine



Daily evaporation

