

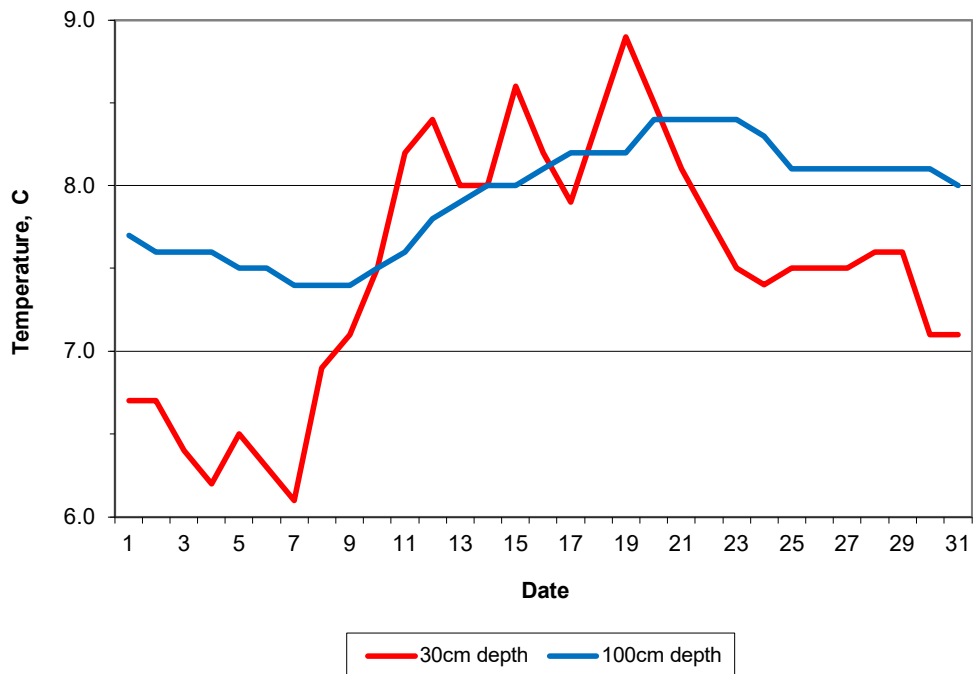
MAIDENHEAD METEOROLOGICAL OBSERVATIONS FOR MARCH 2020

DD	N	dd	ff	ww	VV	0900GMT		Temperature			Soil temperatures (depth in cm)						E	SS	Rain	Sun	S	L	H	T	G	F	Press	Rain	Fr.	Pch	
						Temp	RH	Max	Min	Gmin	5	10	20	30	50	100												hrs	hrs	Evap	
01	1	23	02	02	97	5.7	68	10.9	3.4	-0.6	4.9	4.2	5.5	6.7	6.7	7.7	20	0	5.3	8.7	0	0	5	0	0	0	989.5	5.2	0.0	1.7	Number of days with 2020 normal Snow/sleet falling 0 2.0 50% snow cover 09GMT 0 0.2 1.2 1.2 0 0.5 0 0.3 0 0.6 4.9 14.1 14.3 10.2 3.3 6.0 2.0 A dry (0.1 mm of rain in the final 12 days), sunny (the sunniest March since 2009 - largely due to the 22nd-27th inclusive) and a slightly milder month than normal. Night temperatures were slightly below average with an air frost on five nights. Ground frost was frequent due to many
02	8	09	05	02	97	4.8	91	9.9	2.1	-2.2	5.3	5.3	6.0	6.7	6.7	7.6	20	0	0.1	6.5	0	0	0	0	0	988.0	0.2	0.0	1.0		
03	5	23	02	02	97	3.4	87	10.3	0.2	-4.2	3.1	3.3	4.9	6.4	6.6	7.6	10	0	tr	4.9	0	0	0	0	0	999.5	0.0	0.0	1.1		
04	8	18	02	02	96	2.8	86	8.7	0.0	-3.0	3.7	3.4	4.9	6.2	6.4	7.6	10	0	3.9	0.0	0	0	0	0	0	1009.5	5.4	0.0	0.7		
05	8	09	05	21	97	5.7	87	6.0	2.8	4.2	5.6	5.5	6.0	6.5	6.3	7.5	10	0	4.8	0.0	0	0	0	0	0	994.0	9.5	0.0	0.4		
06	0	31	02	02	97	3.7	91	11.2	-0.5	-3.0	3.1	3.7	5.2	6.3	6.4	7.5	10	0	0.4	9.8	0	0	0	0	0	1004.0	0.3	1.1	1.8		
07	8	23	02	21	97	5.3	90	12.8	-0.7	-3.7	4.5	4.4	5.0	6.1	6.6	7.4	10	0	0.5	0.7	0	0	0	0	0	1017.0	2.0	2.8	1.6		
08	6	23	05	02	97	10.7	72	12.0	5.3	6.0	7.3	7.3	7.2	6.9	6.5	7.4	10	0	1.4	6.8	0	0	0	0	0	1005.5	1.2	0.0	1.2		
09	3	27	05	02	97	8.7	70	12.4	4.6	-1.0	4.9	5.1	6.4	7.1	6.8	7.4	10	0	11.9	2.8	0	0	0	0	0	1012.5	12.8	0.0	1.6		
10	8	23	05	02	97	12.4	89	15.6	5.6	2.0	8.9	8.3	8.0	7.5	7.0	7.5	20	0	0.1	1.2	0	0	0	0	0	1003.0	0.1	0.0	1.2		
11	7	23	02	02	97	9.0	83	15.5	7.2	1.1	7.8	7.8	8.5	8.2	7.5	7.6	10	0	0.6	8.6	0	0	0	0	0	1011.0	0.2	0.0	2.7		
12	2	27	02	02	97	7.7	59	11.1	3.9	-1.7	6.1	6.2	7.7	8.4	7.8	7.8	10	0	0.2	8.0	0	0	0	0	0	1010.5	0.1	0.0	2.3		
13	1	18	09	02	97	9.3	62	13.4	5.7	1.5	6.2	7.3	7.2	8.0	7.7	7.9	10	0	1.6	6.2	0	0	0	0	0	1018.5	3.0	0.0	1.7		
14	7	27	05	60	96	8.8	90	13.1	6.8	1.4	7.3	8.7	7.7	8.0	7.7	8.0	10	0	0.1	2.6	0	0	0	0	0	1013.0	0.1	0.0	1.4		
15	8	27	05	02	97	10.1	75	11.3	8.8	7.3	8.9	5.6	8.9	8.6	8.0	8.0	10	0	2.4	0.0	0	0	0	0	0	1006.5	3.0	0.0	0.8		
16	0	23	02	02	97	6.7	91	14.0	0.4	-2.2	5.1	5.6	7.2	8.2	8.1	8.1	10	0	0.0	10.7	0	0	0	0	0	1021.0	0.0	0.0	1.3		
17	7	23	02	03	97	8.8	82	13.3	1.7	-2.1	5.9	8.9	6.7	7.9	7.8	8.2	10	0	0.0	0.7	0	0	0	0	0	1028.0	0.0	0.0	1.1		
18	8	05	05	02	97	11.7	81	14.6	8.8	7.4	9.3	8.4	8.8	8.4	7.8	8.2	10	0	1.0	0.6	0	0	0	0	0	1024.5	1.3	0.0	1.0		
19	8	05	05	50	96	6.3	89	8.0	6.2	6.2	8.3	7.1	9.0	8.9	8.2	8.2	10	0	1.1	0.0	0	0	0	0	0	1027.0	4.0	0.0	0.5		
20	8	05	09	02	97	8.0	69	11.1	5.8	4.1	6.7	5.6	7.9	8.5	8.2	8.4	10	0	0.0	3.6	0	0	0	0	0	1029.0	0.0	0.0	2.1		
21	5	09	02	02	97	7.6	63	11.2	3.7	-0.3	5.5	5.4	7.0	8.1	8.1	8.4	10	0	0.0	8.7	0	0	0	0	0	1027.0	0.0	0.0	2.9		
22	7	09	09	02	97	6.8	61	12.9	3.3	-0.5	5.6	3.9	6.5	7.8	7.7	8.4	10	0	0.0	10.8	0	0	0	0	0	1027.5	0.0	0.0	2.7		
23	0	09	09	02	97	6.2	49	14.4	-0.4	-4.7	3.6	4.2	6.0	7.5	7.7	8.4	10	0	0.0	11.3	0	0	0	0	0	1028.0	0.0	0.8	2.6		
24	1	13	02	02	97	8.1	56	16.7	-0.6	-3.9	3.9	3.9	5.9	7.4	7.6	8.3	10	0	0.0	11.5	0	0	0	0	0	1027.0	0.0	2.5	2.9		
25	0	09	02	02	97	7.5	53	15.8	-2.2	-5.5	3.6	4.4	5.9	7.5	7.6	8.1	10	0	0.0	11.6	0	0	0	0	0	1025.5	0.0	6.0	3.0		
26	1	05	05	02	97	8.0	55	15.2	1.7	-4.6	3.9	4.7	6.0	7.5	7.5	8.1	03	0	0.0	10.9	0	0	0	0	0	1024.5	0.0	0.0	3.6		
27	0	05	05	10	96	7.7	59	14.5	2.1	-3.3	4.6	4.7	6.4	7.5	7.5	8.1	03	0	0.0	10.8	0	0	0	0	0	1025.0	0.0	0.0	2.8		
28	0	05	09	02	97	8.3	60	11.9	4.9	0.8	5.6	5.6	6.9	7.6	7.6	8.1	90	0	0.0	5.0	0	0	0	0	0	1028.5	0.0	0.0	4.0		
29	1	05	05	02	97	6.3	47	8.6	3.6	-0.4	5.2	5.4	6.6	7.6	7.6	8.1	90	0	tr	7.8	0	0	0	0	0	1038.0	0.0	0.0	3.0		
30	8	05	05	02	97	4.8	64	10.8	2.8	-2.0	5.0	5.1	6.3	7.1	7.2	8.1	90	0	0.1	2.9	0	0	0	0	0	1036.5	0.1	0.0	1.5		
31	0	05	05	02	97	7.9	63	12.3	2.9	-1.8	4.5	4.9	6.4	7.1	7.1	8.0	90	0	0.0	9.1	0	0	0	0	0	1033.0	0.0	0.0	2.0		
Monthly means						7.4	72	12.2	3.2	-0.3	5.6	5.6	6.7	7.5	7.4	7.9											1017.2				
Monthly totals																					35.5	182.8						48.5	13.2	58.2	
Highest values						12.4		16.7	8.8	7.4	9.3	8.9	9.0	8.9	8.2	8.4				11.9	11.6							12.8	6.0	4.0	
Lowest values																															
1981-2010 monthly climatological average						2.8	47	6.0	-2.2	-5.5	3.1	3.3	4.9	6.1	6.3	7.4															
						84	11.6	3.7	0.7	5.7	5.7	6.7	7.0	6.8	7.0				47.3	110.9							1016.0	49.0	25.7	43.4	

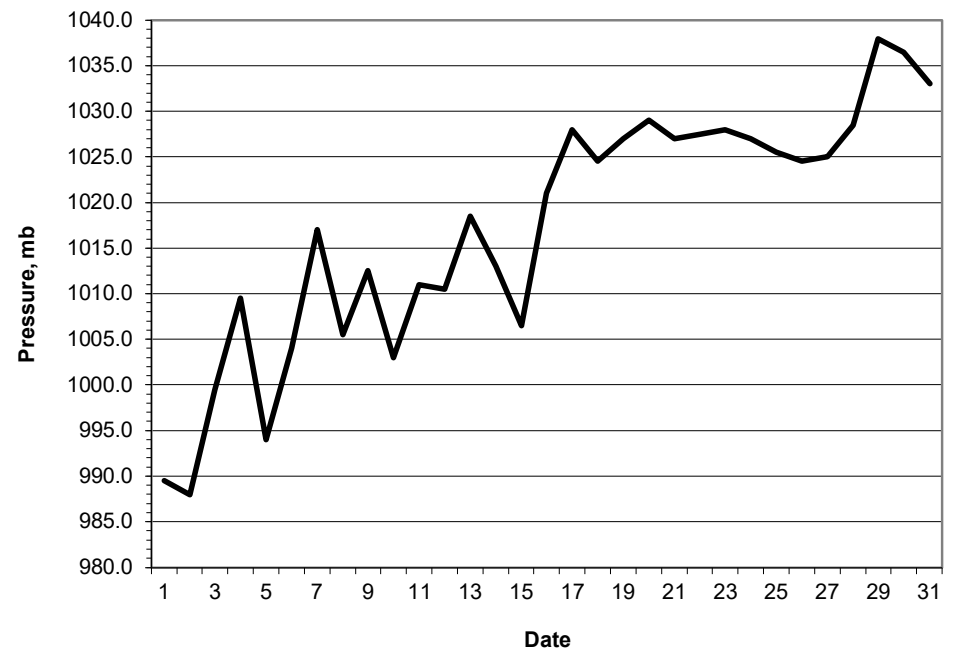
Key
 DD: date
 07GMT observations:
 N cloud cover (oktas, 9=obscured) dd wind direction (degrees/10)
 ff wind speed (knots)
 ww present weather code
 1 cloud decreasing 21 recent rain
 2 sky not changing 60 intermittent slight rain
 3 cloud increasing 61 continuous slight rain
 5 haze 71 continuous slight snow
 VV visibility (00-50 metres/100, 94 very poor, 95 poor, 96 moderate, 97 good)
 Soil temperatures are for 0700GMT beneath bare soil (5, 10, 20cm) or grass (30, 50, 100cm)
 09GMT observations:
 Temp temperature (degC) RH relative humidity (%)
 E state of ground (X1,X2 slight snow, 00 dry, 10 moist, 20 wet, 40 frozen, 90 cracked)
 Press air pressure (mb) SS snow depth (cm)
 24 hour readings:
 Max maximum temperature (degC) beginning 09GMT Min minimum temperature (degC) ending 09GMT
 Gmin grass minimum temperature (degC) ending 09GMT Rain precipitation beginning 09GMT
 Sun sunshine (hours) sunrise-sunset Rain hrs hours of rainfall (>0.1mm/h) 09-09GMT
 Fr. Hrs hours of air frost (00-24GMT) Pch Evap Piche evaporation (ml) beginning 09GMT
 Days with
 S snow(5) or sleet(1) falling L 50% snow cover at 09GMT H hail or ice pellets
 T thunder heard G gale F fog at 09GMT

This information (and data for earlier months) is also available at <http://www.met.rdg.ac.uk/~brug>

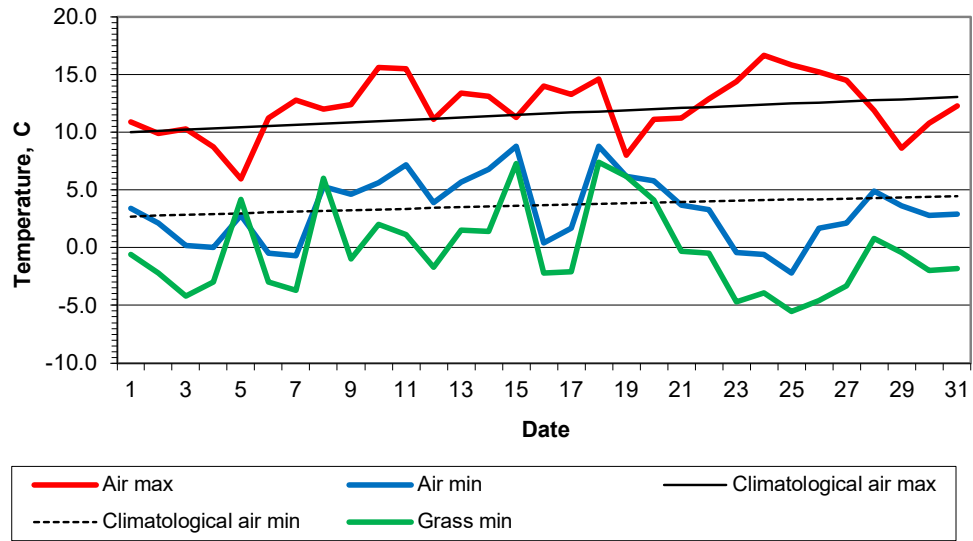
Daily soil temperatures, 0700GMT



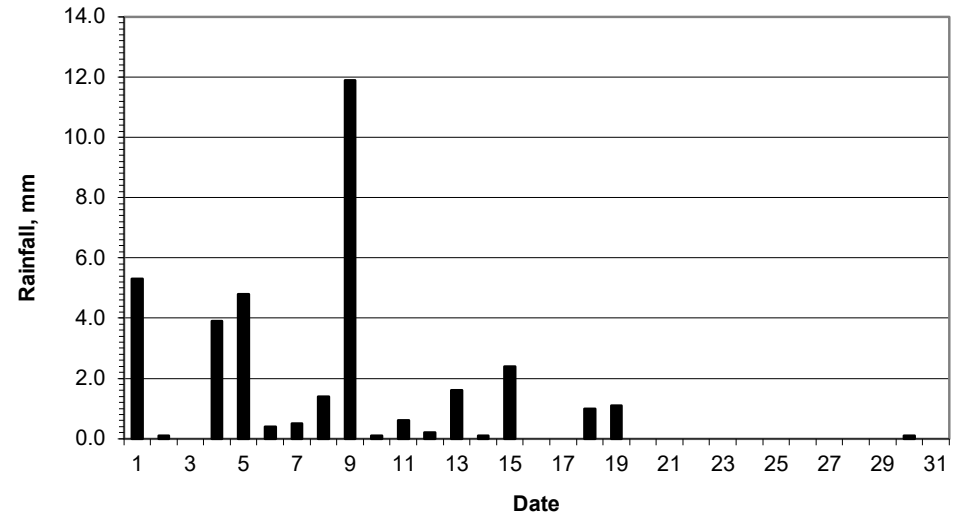
Mean sea level pressure, 0900GMT



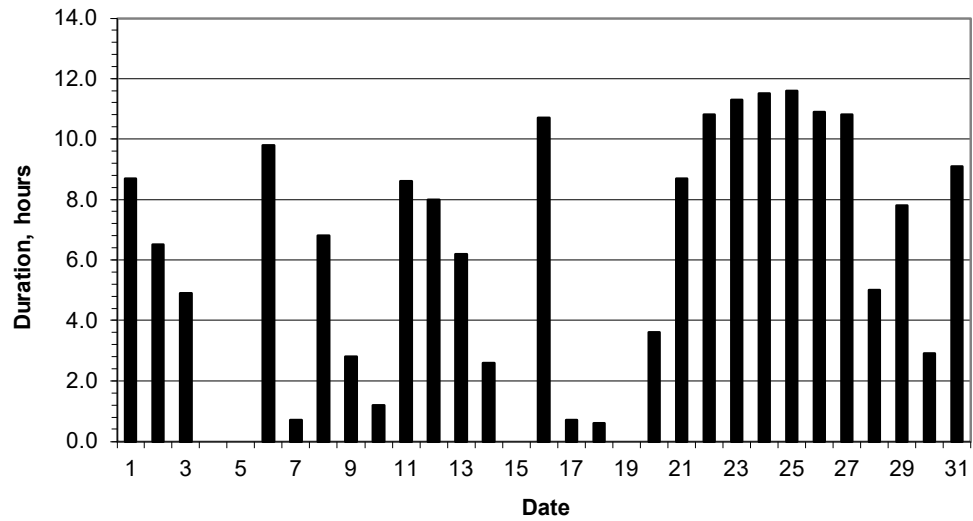
Daily temperature extremes



Daily rainfall



Daily sunshine



Daily evaporation

