

MAIDENHEAD METEOROLOGICAL OBSERVATIONS FOR MARCH 2019

DD	N	dd	ff	ww	VV	0900GMT		Temperature			Soil temperatures (depth in cm)						E	SS	Rain	Sun	S	L	H	T	G	F	Press	Rain hrs	Fr. hrs	Pch Evap		
						Temp	RH	Max	Min	Gmin	5	10	20	30	50	100																
01	8	33	02	02	97	8.5	91	11.4	8.0	3.2	7.3	7.3	7.5	7.4	6.9	7.4	10	0	1.3	0.0	0	0	0	0	0	0	1020.0	2.3	0.0	0.6	Number of days with 2019 normal Snow/sleet falling 0 2.0 50% snow cover 09GMT 0 0.2 Hail or ice pellets 2 1.2 Thunder 1 0.5 Gale 0 0.3 Fog at 09GMT 0 0.6 Air frost 1 4.9 Ground frost 7 14.1 0.2mm precipitation 17 14.3 1.0mm precipitation 15 10.2 5.0mm precipitation 3 3.3 No sunshine 5 6.0 A mild, wet and sunny month. Most of the rain fell in the first 16 days with a warm and dry in the final 12 days. Only one air frost - the fewest in March since 0 in 2017 and 1997. There was no snowfall. It was the sunniest March for 3 years and the third warmest in 20 years after 2017 and 2012.	
02	8	18	05	02	96	9.8	97	14.7	7.2	1.5	7.8	7.3	7.5	7.4	7.1	7.4	10	0	2.5	2.5	0	0	0	0	0	1011.5	4.6	0.0	1.2			
03	8	23	05	61	96	11.0	94	12.1	9.0	6.4	8.8	8.5	8.6	8.2	7.6	7.5	20	0	4.0	0.0	0	0	0	0	0	1001.0	8.6	0.0	1.0			
04	7	27	02	01	97	5.2	86	11.0	3.6	0.6	5.8	5.9	7.5	8.1	7.7	7.7	10	0	1.0	4.0	0	0	0	0	0	994.0	0.2	0.0	1.3			
05	0	23	05	02	97	5.9	83	12.4	2.0	-0.8	4.2	4.4	6.3	7.6	7.6	7.8	10	0	5.6	6.1	0	0	0	0	0	1003.0	10.5	0.0	1.2			
06	8	18	09	02	97	10.7	90	13.3	5.9	0.2	8.3	7.9	8.0	8.0	7.5	7.9	10	0	2.2	1.1	0	0	0	0	0	991.0	1.0	0.0	1.1			
07	7	27	05	25	97	7.3	82	11.9	4.9	1.3	6.7	6.0	7.5	8.2	7.8	7.9	10	0	1.0	5.0	0	0	0	0	0	992.0	2.8	0.0	1.4			
08	4	27	02	02	97	5.6	89	10.3	1.4	-2.7	4.9	5.3	6.9	7.9	7.7	8.0	10	0	1.2	3.2	0	0	0	0	0	1013.5	4.2	0.0	0.9			
09	7	18	05	02	97	9.1	81	14.2	5.6	0.6	6.7	6.7	7.5	7.9	7.6	8.0	10	0	10.2	5.1	0	0	0	0	0	1011.0	9.0	0.0	1.8			
10	7	27	19	02	97	9.0	73	11.6	5.5	5.0	7.7	7.8	7.7	8.0	7.7	8.0	20	0	3.0	8.2	0	0	6	1	0	1004.0	1.5	0.0	2.1			
11	0	23	05	02	97	6.5	62	12.0	1.8	-0.9	4.6	4.6	6.0	7.5	7.6	8.1	10	0	1.5	8.5	0	0	0	0	0	1023.5	3.6	0.0	1.7			
12	8	27	09	60	96	8.8	89	10.0	6.5	0.6	7.5	7.2	7.5	7.7	7.9	8.0	10	0	7.2	0.8	0	0	0	0	0	1005.5	3.5	0.0	1.1			
13	7	27	13	02	97	8.4	68	13.0	4.2	1.1	5.8	7.2	6.6	7.3	7.4	8.0	10	0	3.5	5.2	0	0	0	0	0	1007.0	4.1	0.0	2.1			
14	8	27	19	21	97	11.0	80	15.3	7.2	5.0	7.5	8.9	7.5	7.6	7.4	7.9	10	0	4.8	5.5	0	0	0	0	0	1003.0	2.9	0.0	1.8			
15	7	27	19	02	97	12.9	76	14.4	9.4	4.2	9.4	9.6	8.8	8.3	7.7	7.9	10	0	tr	2.0	0	0	0	0	0	1006.5	0.0	0.0	1.7			
16	8	27	09	21	97	10.8	75	12.4	10.4	9.1	9.5	6.7	9.5	9.0	8.1	8.0	10	0	4.5	0.7	0	0	0	0	0	1005.5	2.7	0.0	1.3			
17	1	27	05	02	97	7.5	71	10.8	3.4	-0.3	6.3	6.0	7.9	8.9	8.5	8.2	10	0	0.7	8.3	0	0	5	0	0	1005.0	0.6	0.0	1.5			
18	7	23	02	02	97	7.9	78	13.4	3.1	-1.7	6.0	8.0	7.3	8.3	8.2	8.3	10	0	0.2	5.0	0	0	0	0	0	1020.0	0.2	0.0	1.0			
19	8	27	02	02	96	8.4	89	13.2	6.3	0.7	7.8	8.8	8.2	8.5	8.1	8.3	10	0	tr	0.6	0	0	0	0	0	1027.0	0.0	0.0	0.7			
20	8	27	05	02	97	10.4	81	12.7	8.4	3.6	8.9	9.4	9.0	8.9	8.1	8.3	10	0	0.0	0.0	0	0	0	0	0	1033.0	0.0	0.0	0.9			
21	8	27	05	02	97	11.1	81	13.6	9.4	8.5	9.5	9.8	9.5	9.2	8.6	8.5	10	0	0.0	0.0	0	0	0	0	0	1034.0	0.0	0.0	1.0			
22	8	23	05	02	97	9.4	79	11.1	9.3	8.1	9.6	9.0	10.0	9.6	8.9	8.6	10	0	0.0	0.0	0	0	0	0	0	1029.5	0.0	0.0	0.8			
23	8	31	05	02	97	10.4	76	13.9	7.0	2.9	9.4	7.3	9.4	9.4	9.0	8.6	10	0	0.0	1.7	0	0	0	0	0	1032.5	0.0	0.0	1.6			
24	0	31	02	02	97	9.7	66	15.7	3.4	0.7	7.3	7.2	8.5	9.3	9.0	8.9	10	0	0.0	10.3	0	0	0	0	0	1032.0	0.0	0.0	2.0			
25	0	31	05	02	97	9.1	57	13.6	5.5	2.0	6.6	5.6	8.5	9.1	9.0	8.8	10	0	0.0	11.2	0	0	0	0	0	1032.5	0.0	0.0	2.0			
26	3	31	02	02	97	7.6	78	15.1	-0.7	-3.0	5.4	7.4	7.4	8.7	8.7	8.9	00	0	0.0	9.7	0	0	0	0	0	1035.0	0.0	2.6	1.9			
27	7	36	02	02	97	9.7	63	13.5	5.2	0.2	7.3	7.4	8.4	8.8	8.6	8.9	00	0	0.0	3.7	0	0	0	0	0	1036.0	0.0	0.0	1.3			
28	8	05	02	02	97	9.1	71	16.5	4.3	0.8	7.2	7.3	8.3	8.7	8.6	8.8	00	0	0.0	6.5	0	0	0	0	0	1037.5	0.0	0.0	1.4			
29	0	13	02	02	96	9.9	68	18.6	1.3	-2.0	6.1	6.4	8.0	8.9	8.6	8.8	00	0	0.0	11.2	0	0	0	0	0	1032.5	0.0	0.0	1.7			
30	0	05	02	02	97	10.5	76	20.2	3.0	0.0	6.9	7.2	8.4	9.1	8.8	8.9	00	0	0.0	9.4	0	0	0	0	0	1022.5	0.0	0.0	2.3			
31	8	09	05	02	97	9.0	76	13.3	7.4	4.6	8.8	8.9	8.6	9.7	9.0	8.9	00	0	0.0	2.8	0	0	0	0	0	1025.0	0.0	0.0	1.9			
Monthly means						9.0	78	13.4	5.4	1.9	7.3	7.3	8.0	8.4	8.1	8.2												1017.0				
Monthly totals																					54.4	138.3							62.3	2.6	44.3	
Highest values						12.9		20.2	10.4	9.1	9.6	9.8	10.0	9.7	9.0	8.9					10.2	11.2							10.5	2.6	2.3	
Lowest values						5.2	57	10.0	-0.7	-3.0	4.2	4.4	6.0	7.3	6.9	7.4																
1981-2010 monthly climatological averages						8.4	11.6	3.7	0.7	5.7	5.7	6.7	7.0	6.8	7.0						47.3	110.9							1016.0	49.0	25.7	43.4

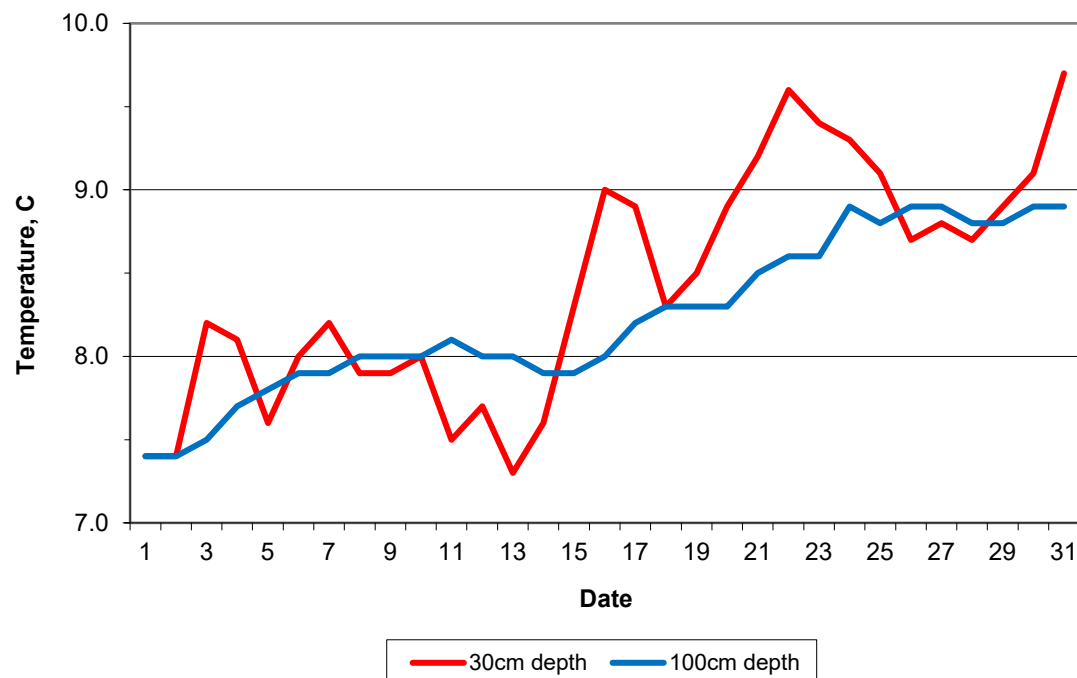
Key
 DD: date
 07GMT observations
 N cloud cover (oktas, 9=obscured) dd wind direction (degrees/10)
 ff wind speed (knots)
 ww present weather code
 1 cloud decreasing 21 recent rain
 2 sky not changing 60 intermittent slight rain
 3 cloud increasing 61 continuous slight rain
 5 haze 71 continuous slight snow
 VV visibility (00-50 metres/100, 94 very poor, 95 poor, 96 moderate, 97 good)
 Soil temperatures are for 0700GMT beneath bare soil (5, 10, 20cm) or grass (30, 50, 100cm)

09GMT observations
 Temp temperature (degC) RH relative humidity (%)
 E state of ground (X1,X2 slight snow, 00 dry, 10 moist, 20 wet, 40 frozen)
 Press air pressure (mb) SS snow depth (cm)
 24 hour readings
 Max maximum temperature (degC) beginning 09GMT Min minimum temperature (degC) ending 09GMT
 Gmin grass minimum temperature (degC) ending 09GMT Rain precipitation beginning 09GMT
 Sun sunshine (hours) sunrise-sunset Rain hrs hours of rainfall (>0.1mm/h) 09-09GMT
 Fr. Hrs hours of air frost (00-24GMT) Pch Evap Piche evaporation (ml) beginning 09GMT

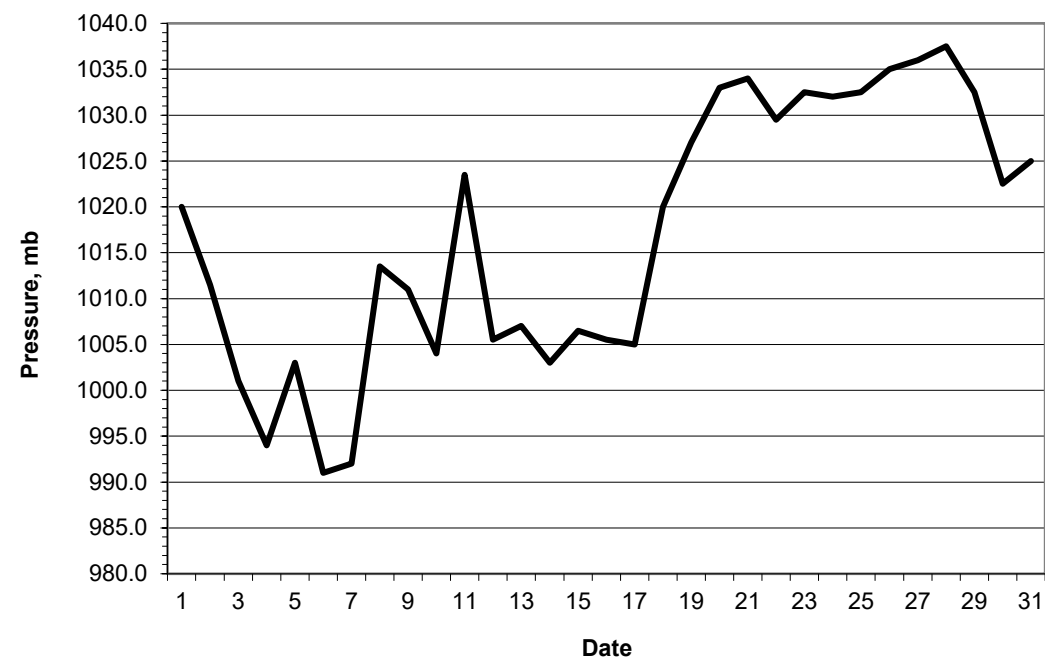
Days with
 S snow(5) or sleet(1) falling L 50% snow cover at 09GMT H hail or ice pellets
 T thunder heard G gale F fog at 09GMT

This information (and data for earlier months) is also available at <http://www.met.rdg.ac.uk/~brugge>

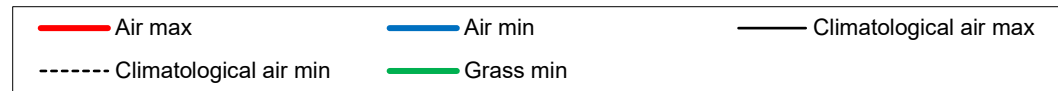
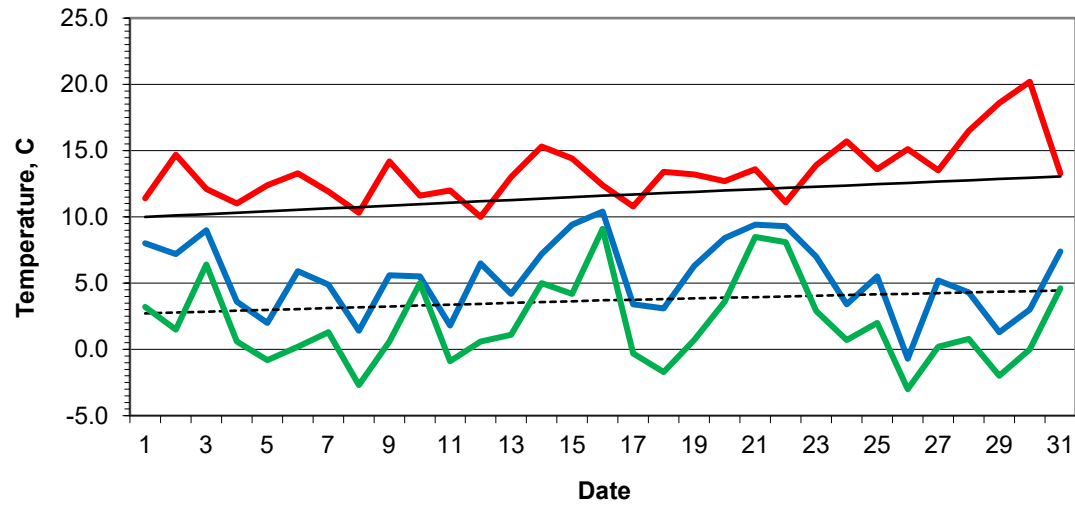
Daily soil temperatures, 0700GMT



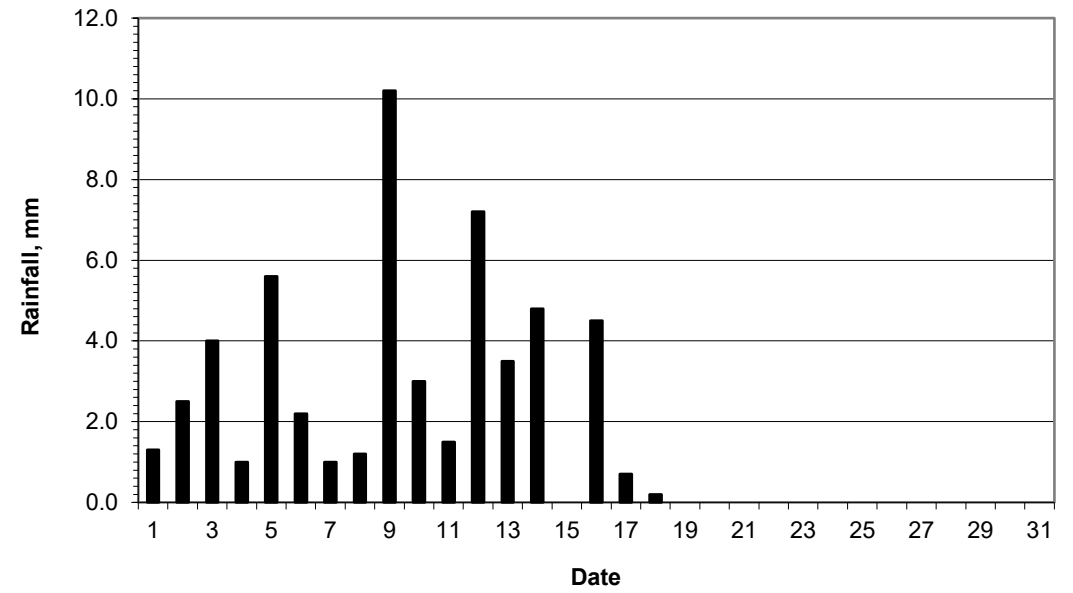
Mean sea level pressure, 0900GMT



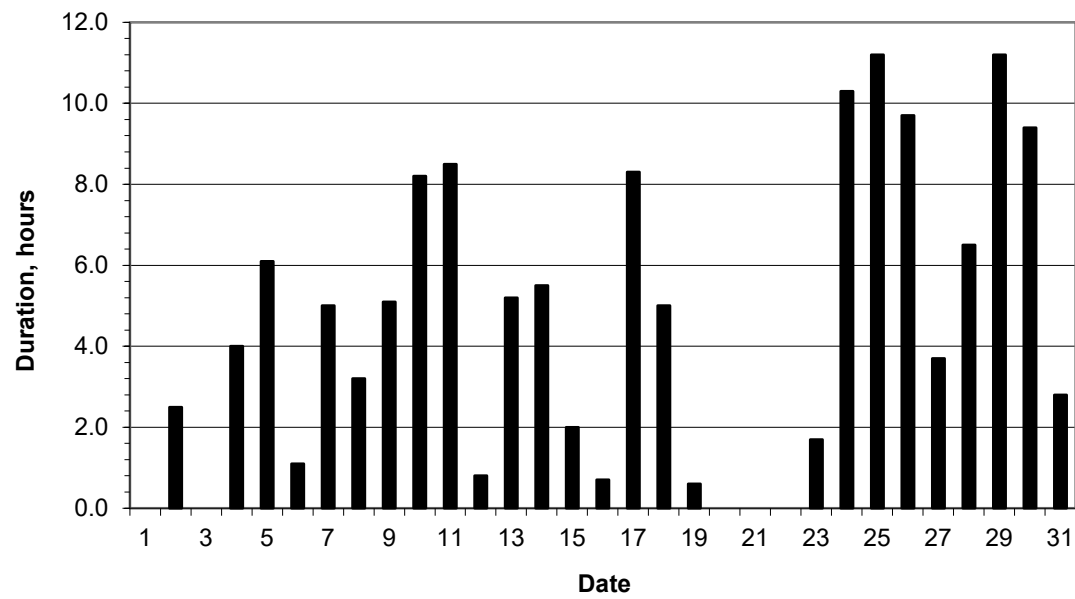
Daily temperature extremes



Daily rainfall



Daily sunshine



Daily evaporation

