

MAIDENHEAD METEOROLOGICAL OBSERVATIONS FOR MARCH 2018

DD	N	dd	ff	ww	VV	0900GMT Temp	RH	Temperature Max	Min	Gmin	Soil temperatures (depth in cm)						E	SS	Rain	Sun	S	L	H	T	G	F	Press	Rain hrs	Fr. hrs	Pch Evap			
											5	10	20	30	50	100																	
01	8	04	09	70	08	-4.1	72	-0.3	-4.9	-5.1	0.3	0.1	1.2	2.4	3.0	5.5	X6	1	2.0	0.0	5	1	0	0	0	1	1002.5	4.5	24.0	0.0			
02	8	09	13	02	97	-0.9	65	1.8	-4.1	-4.5	0.3	0.3	1.2	2.2	2.7	5.2	X7	5	3.0	0.0	5	1	0	0	0	0	992.5	6.5	21.5	0.0			
03	8	09	05	02	97	1.8	88	6.6	-1.4	-1.5	0.6	0.4	1.3	2.3	2.6	5.0	X2	3	1.3	0.2	0	1	0	0	0	0	992.5	3.9	0.0	0.5			
04	8	13	02	02	96	6.6	91	10.1	1.8	0.8	3.1	2.4	2.5	2.7	2.7	4.9	10	0	0.2	0.3	0	0	0	0	0	0	990.0	0.3	0.0	0.6			
05	4	13	02	02	96	6.2	91	10.9	0.4	0.0	3.5	3.1	3.5	3.6	3.7	5.1	10	0	2.6	1.4	0	0	0	0	0	0	990.0	4.2	0.0	0.6			
06	8	22	05	02	97	6.2	85	11.0	5.2	4.0	4.7	4.7	4.8	4.5	4.2	5.1	10	0	2.3	1.6	0	0	0	0	0	0	989.0	5.6	0.0	0.6			
07	8	27	02	02	94	5.5	89	11.6	3.7	-0.1	4.6	4.5	5.0	5.2	4.7	5.2	10	0	3.2	5.1	0	0	0	0	0	0	995.0	2.3	0.0	0.8			
08	1	22	05	01	97	6.4	71	9.7	1.2	0.5	3.9	3.8	4.7	5.2	4.8	5.3	20	0	tr	8.8	0	0	0	0	0	0	994.0	0.0	0.0	1.4			
09	8	18	02	02	97	3.8	90	10.3	-0.2	-3.8	2.9	2.8	4.0	5.0	4.8	5.5	10	0	7.3	0.0	0	0	0	0	0	0	1004.5	9.2	0.2	0.3			
10	6	13	02	02	96	9.9	92	14.8	3.8	1.4	6.5	6.2	6.0	5.5	5.0	5.6	10	0	0.1	0.6	0	0	0	0	0	0	993.5	0.1	0.0	0.5			
11	7	09	02	02	95	7.5	91	12.7	5.0	1.3	6.1	5.8	6.0	6.1	5.5	5.7	10	0	7.7	1.1	0	0	0	0	0	0	992.0	6.2	0.0	0.6			
12	8	31	02	21	97	8.9	71	10.9	7.5	6.7	7.7	7.2	7.1	6.8	6.0	5.9	20	0	1.0	0.0	0	0	0	0	0	0	985.5	2.1	0.0	0.7			
13	2	13	02	02	97	8.0	79	12.0	4.3	0.4	5.9	4.4	7.0	7.0	6.4	6.1	10	0	0.0	4.7	0	0	0	0	0	0	1007.0	0.0	0.0	0.5			
14	7	13	05	02	96	6.8	92	13.3	0.2	-2.8	4.4	7.2	5.8	6.8	6.5	6.3	10	0	8.2	2.4	0	0	0	0	0	0	1006.5	6.9	0.0	1.9			
15	8	22	02	02	97	8.9	91	13.3	6.8	5.5	7.5	7.4	7.3	7.1	6.5	6.4	20	0	0.0	2.6	0	0	0	0	0	0	989.5	0.0	0.0	1.2			
16	6	09	02	02	97	9.8	76	15.3	7.6	4.0	7.7	5.6	7.7	7.5	6.8	6.6	10	0	0.1	7.6	0	0	0	0	0	0	998.0	0.2	0.0	1.2			
17	8	09	09	70	95	1.3	72	1.3	1.3	0.3	5.3	2.8	7.1	7.7	7.1	6.8	10	0	4.0	0.0	5	0	0	0	0	0	1007.0	10.0	6.5	0.2			
18	8	04	09	02	96	0.5	66	0.8	-1.8	-3.0	2.8	2.0	4.3	6.0	6.4	6.9	X7	6	1.3	0.0	5	1	0	0	0	0	1009.5	1.2	12.0	0.0			
19	8	36	05	01	97	0.5	54	5.5	-1.4	-2.9	2.2	2.2	3.4	5.1	5.5	6.8	X7	4	0.1	6.7	0	1	0	0	0	0	1015.0	0.1	2.3	1.6			
20	8	36	09	02	97	5.0	75	9.2	0.5	-3.4	2.7	1.7	3.1	4.4	4.9	6.5	10	0	0.0	4.8	0	0	0	0	0	0	1028.5	0.0	0.0	1.4			
21	2	31	02	02	97	4.7	84	12.7	-3.5	-6.6	1.6	4.4	3.3	4.6	4.9	6.2	40	0	0.0	9.6	0	0	0	0	0	0	1034.0	0.0	7.3	1.6			
22	6	31	02	02	97	8.9	73	12.6	4.5	-4.0	4.4	6.1	5.0	5.3	4.8	6.2	10	0	0.6	3.4	0	0	0	0	0	0	1023.0	0.4	0.0	1.8			
23	6	22	05	01	97	9.6	73	13.6	6.5	4.6	6.5	6.7	6.1	6.0	5.5	6.1	10	0	6.4	4.3	0	0	0	0	0	0	1002.5	8.4	0.0	1.5			
24	8	09	02	60	95	7.3	88	9.2	6.4	3.4	7.1	6.8	7.0	6.6	6.0	6.4	20	0	1.0	0.1	0	0	0	0	0	0	1000.5	5.0	0.0	0.3			
25	7	04	05	02	97	8.9	82	12.5	6.2	1.4	7.2	5.6	6.9	6.8	6.2	6.4	10	0	tr	0.1	0	0	0	0	0	0	1011.0	0.0	0.0	0.9			
26	1	31	02	02	97	9.0	63	13.8	2.7	-1.7	5.9	6.6	6.9	7.0	6.6	6.5	10	0	6.9	6.2	0	0	0	0	0	0	1018.5	7.0	0.0	1.6			
27	8	18	02	61	94	7.4	89	15.4	5.4	-0.5	6.7	6.6	7.3	7.4	6.7	6.7	20	0	3.9	2.2	0	0	0	0	0	0	1006.0	5.2	0.0	1.0			
28	8	27	02	61	95	5.7	86	10.1	5.6	1.5	7.1	7.1	7.5	7.6	7.0	6.9	20	0	5.0	2.8	0	0	0	0	0	0	1002.5	4.3	0.0	0.4			
29	5	13	02	02	97	6.4	88	9.0	-0.8	-3.4	4.1	4.4	6.0	7.1	7.0	7.0	20	0	8.3	0.7	0	0	0	0	0	0	1002.5	3.6	2.2	0.5			
30	7	13	02	02	97	7.0	90	7.9	2.8	-1.1	5.6	5.5	6.1	6.8	6.6	7.0	20	0	12.2	0.0	0	0	0	0	0	0	997.5	9.7	0.0	0.3			
31	8	18	02	02	97	4.9	90	9.6	3.7	3.5	5.8	5.6	6.4	6.7	6.6	7.0	20	0	0.6	0.8	0	0	0	0	0	0	995.5	0.8	0.0	0.9			
Monthly means						5.8	81	9.9	2.4	-0.2	4.7	4.5	5.2	5.6	5.4	6.1												1002.4					
Monthly totals																						89.3	78.1							107.7	76.0	25.4	
Highest values						9.9		15.4	7.6	6.7	7.7	7.4	7.7	7.7	7.1	7.0						12.2	9.6						10.0	24.0	1.9		
Lowest values						-4.1	54	-0.3	-4.9	-6.6	0.3	0.1	1.2	2.2	2.6	4.9																	
1981-2010 monthly climatological averages						84	11.6	3.7	0.7	5.7	5.7	6.7	7.0	6.8	7.0							47.3	110.9						1016.0	49.0	25.7	43.4	

Number of days with 2018 normal Snow/sleet falling 4 2.0 50% snow cover 09GMT 5 0.2 Hail or ice pellets 0 1.2 Thunder 0 0.5 Gale 0 0.3 Fog at 09GMT 1 0.6 Air frost 8 4.9 Ground frost 15 14.1 0.2mm precipitation 22 14.3 1.0mm precipitation 19 10.2 5.0mm precipitation 8 3.3 No sunshine 7 6.0 An unusually cold and snowy start to the month with the first ice day in March since before 1953 and the lowest March temperature since 2006. Another very cold snap around the 18th with further snowfall. Overall the most days with snow lying in March since 1965, the wettest since 2001, the coldest and dullest since 2013.

Key

DD: date

07GMT observations

N	cloud cover (oktas, 9=obscured)	dd	wind direction (degrees/10)
ff	wind speed (knots)		
ww	present weather code		
1	cloud decreasing	21	recent rain
2	sky not changing	60	intermittent slight rain
3	cloud increasing	61	continuous slight rain
5	haze	71	continuous slight snow
VV	visibility (00-50 metres/100, 94 very poor, 95 poor, 96 moderate, 97 good)		

Soil temperatures are for 0700GMT beneath bare soil (5, 10, 20cm) or grass (30, 50, 100cm)

09GMT observations

Temp	temperature (degC)	RH	relative humidity (%)
E	state of ground (X1,X2 slight snow, 00 dry, 10 moist, 20 wet, 40 frozen)		
Press	air pressure (mb)	SS	snow depth (cm)

24 hour readings

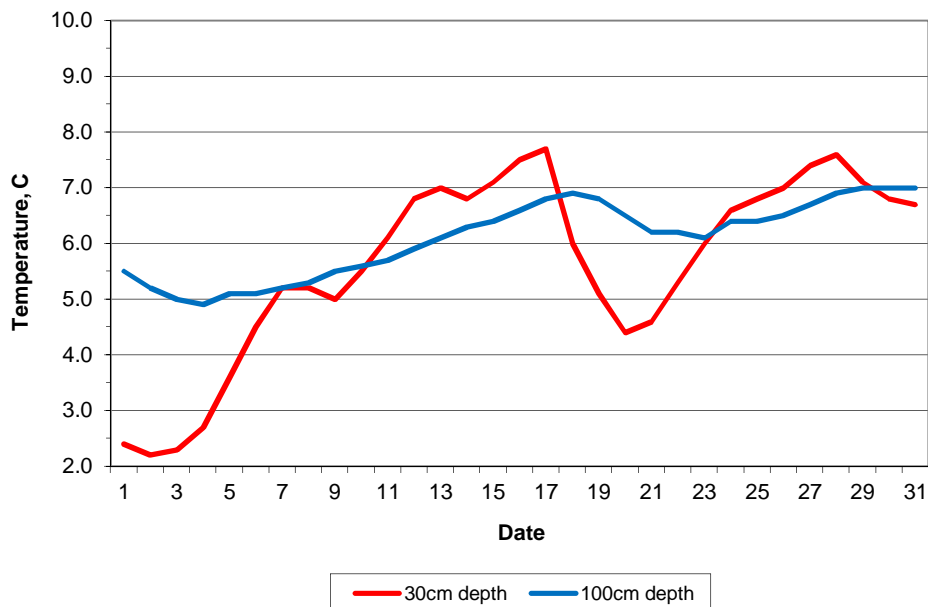
Max	maximum temperature (degC) beginning 09GMT	Min	minimum temperature (degC) ending 09GMT
Gmin	grass minimum temperature (degC) ending 09GMT	Rain	precipitation beginning 09GMT
Sun	sunshine (hours) sunrise-sunset	Rain hrs	hours of rainfall (>0.1mm/h) 09-09GMT
Fr. Hrs	hours of air frost (00-24GMT)	Pch Evap	Piche evaporation (ml) beginning 09GMT

Days with

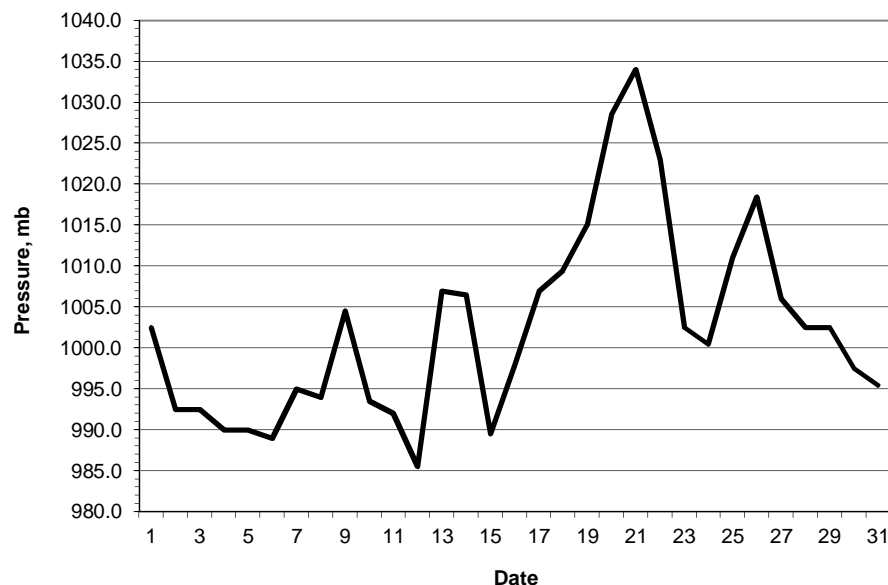
S	snow(5) or sleet(1) falling	L	50% snow cover at 09GMT	H	hail or ice pellets
T	thunder heard	G	gale	F	fog at 09GMT

This information (and data for earlier months) is also available at <http://www.met.rdg.ac.uk/~brugge>

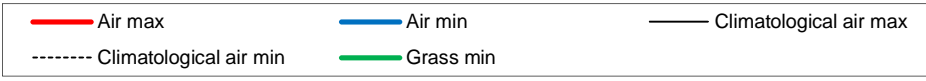
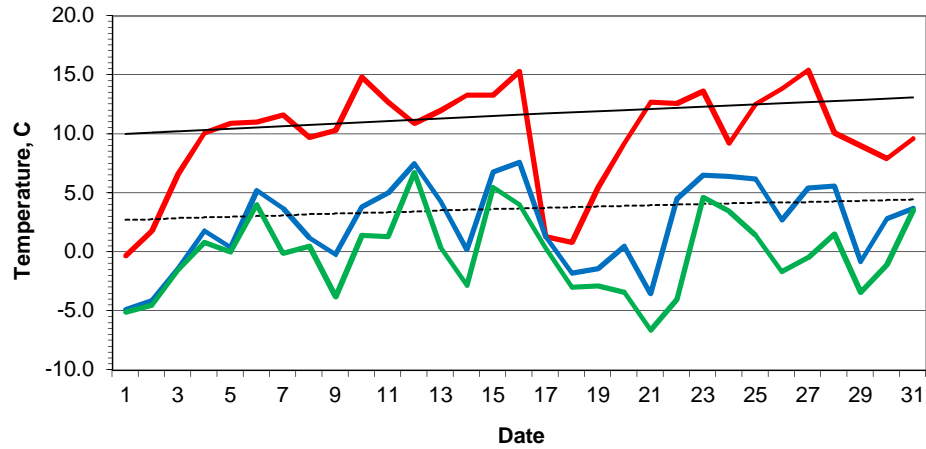
Daily soil temperatures, 0700GMT



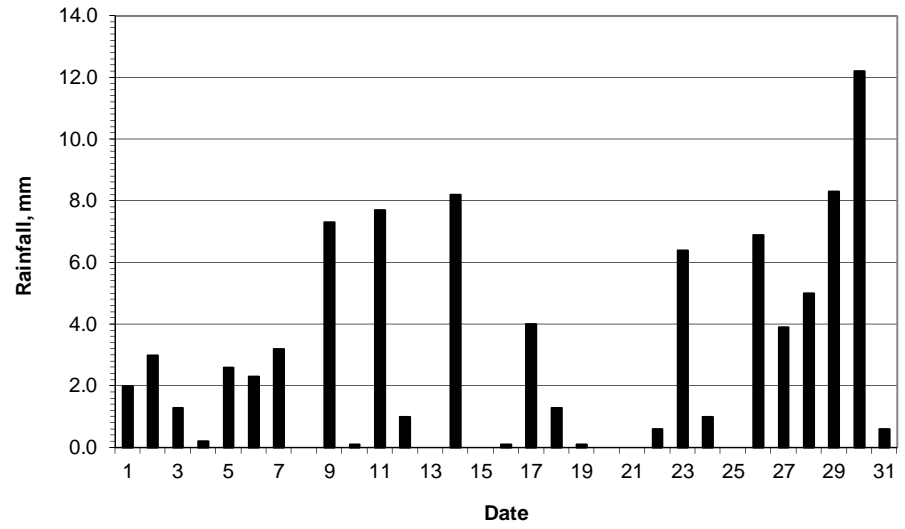
Mean sea level pressure, 0900GMT



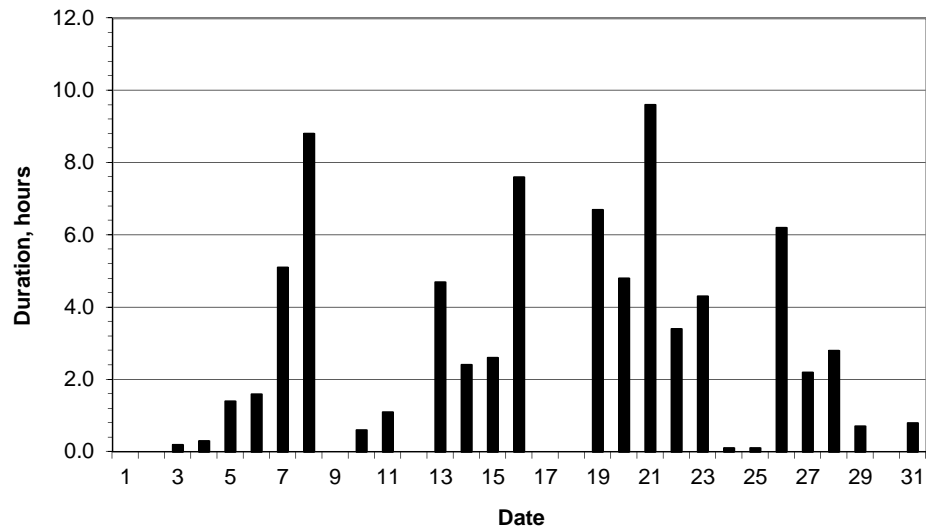
### Daily temperature extremes



### Daily rainfall



### Daily sunshine



### Daily evaporation

