

MAIDENHEAD METEOROLOGICAL OBSERVATIONS FOR MARCH 2014

DD	N	dd	ff	ww	VV	0900GMT		Temperature				Soil temperatures (depth in cm)						E	SS	Rain	Sun	S	L	H	T	G	F	Press	Rain	Fr.	Pch																										
						Temp	RH	Max	Min	Gmin	5	10	20	30	50	100	hrs												hrs	Evap																											
01	1	31	02	02	97	3.1	91	11.0	-0.1	-2.0	4.1	4.1	5.5	6.7	6.8	7.4	10	0	0.0	8.7	0	0	0	0	0	0	0	1002.0	0.0	0.2	1.2	Number of days with 2014 normal Snow/sleet falling 0 2.0 50% snow cover 09GMT 0 0.2 Hail or ice pellets 4 1.2 Thunder 1 0.5 Gale 0 0.3 Fog at 09GMT 2 0.6 Air frost 4 4.9 Ground frost 13 14.1 0.2mm precipitation 11 14.3 1.0mm precipitation 6 10.2 5.0mm precipitation 2 3.3 No sunshine 2 6.0 A warm, sunny and dry month. Only 0.1 mm of rain during 4th to 19th and a large range of pressure during the month at 0900 GMT. Much of the rain fell on just two days; there was no snow but 4 days with hail. 20.6C on the 9th was an unusually high air temperature for early March.																									
02	6	18	05	03	97	9.0	85	10.4	0.3	-1.4	6.0	5.4	5.7	6.6	6.9	7.4	10	0	6.8	0.9	0	0	0	0	0	0	999.0	4.0	0.0	0.7																											
03	7	18	02	02	97	5.6	92	9.0	1.2	-1.6	4.6	4.9	6.2	6.8	6.8	7.4	20	0	0.4	1.0	0	0	0	0	0	0	983.0	0.4	0.0	0.2																											
04	2	27	02	02	97	2.2	87	10.6	-0.8	-3.0	2.9	3.4	5.1	6.5	6.7	7.3	10	0	0.0	1.8	0	0	0	0	0	0	1003.5	0.0	3.2	0.5																											
05	3	00	00	03	97	3.8	92	13.4	-1.5	-2.5	2.8	3.2	4.8	6.2	6.6	7.3	10	0	0.0	6.1	0	0	0	0	0	0	1020.5	0.0	6.7	0.9																											
06	5	18	02	10	96	6.7	92	13.0	1.8	-1.0	4.3	4.4	5.8	6.3	6.5	7.2	10	0	0.0	2.8	0	0	0	0	0	0	1026.0	0.0	0.0	1.2																											
07	8	18	09	02	97	9.8	86	17.8	6.7	1.2	7.1	6.6	6.7	6.8	6.5	7.2	10	0	0.1	5.9	0	0	0	0	0	0	1021.0	0.1	0.0	1.1																											
08	8	13	05	01	97	10.0	87	17.0	6.2	1.0	7.8	7.2	7.3	7.3	6.9	7.2	10	0	0.0	5.9	0	0	0	0	0	0	1027.0	0.0	0.0	1.6																											
09	1	31	05	02	96	9.6	85	20.6	2.0	-0.3	6.1	5.5	6.5	7.4	7.2	7.4	10	0	0.0	10.1	0	0	0	0	0	0	1023.5	0.0	0.0	1.8																											
10	4	04	02	03	95	11.2	81	12.4	2.0	0.2	5.4	5.7	7.0	7.8	7.4	7.5	10	0	0.0	3.4	0	0	0	0	0	0	1027.5	0.0	0.0	1.6																											
11	8	36	05	02	96	6.9	81	10.9	6.3	4.0	6.7	6.7	7.3	7.7	7.4	7.5	10	0	0.0	0.0	0	0	0	0	0	0	1035.0	0.0	0.0	0.7																											
12	2	04	05	03	96	5.2	88	15.4	2.1	-0.6	4.6	5.1	6.5	7.5	7.4	7.6	10	0	tr	6.3	0	0	0	0	0	0	1034.0	0.0	0.0	1.0																											
13	9	31	00	45	02	3.4	97	18.0	1.7	0.0	5.4	5.9	6.7	7.5	7.4	7.6	10	0	0.0	7.4	0	0	0	0	0	1	1031.5	0.0	0.0	0.9																											
14	9	27	02	45	02	4.0	97	17.7	2.1	0.1	5.8	7.8	7.0	7.8	7.4	7.6	10	0	0.0	6.6	0	0	0	0	0	1	1030.0	0.0	0.0	1.3																											
15	5	22	05	01	97	11.2	77	19.2	4.0	3.1	8.5	7.8	7.9	8.0	7.5	7.7	10	0	0.0	8.4	0	0	0	0	0	0	1029.0	0.0	0.0	2.2																											
16	1	22	09	02	97	13.8	65	20.6	6.8	2.6	8.7	7.2	8.3	8.6	8.0	7.9	10	0	0.0	10.9	0	0	0	0	0	0	1024.5	0.0	0.0	1.9																											
17	7	22	02	03	97	8.6	92	15.1	4.5	0.4	7.0	8.2	8.3	8.9	8.3	7.9	10	0	tr	3.2	0	0	0	0	0	0	1023.5	0.0	0.0	1.3																											
18	6	27	02	01	97	9.7	77	14.3	7.1	4.0	8.3	7.3	8.6	8.9	8.3	8.1	10	0	tr	3.2	0	0	0	0	0	0	1017.0	0.0	0.0	1.3																											
19	7	22	02	02	97	8.0	86	16.3	5.0	1.5	7.2	8.6	8.5	9.0	8.5	8.1	00	0	0.0	4.0	0	0	0	0	0	0	1023.5	0.0	0.0	1.7																											
20	8	22	02	02	96	10.8	78	14.1	6.8	3.4	8.8	8.3	8.9	8.9	8.5	8.2	00	0	2.7	2.6	0	0	0	0	0	0	1011.5	4.2	0.0	1.3																											
21	1	27	05	01	97	9.7	70	13.5	5.9	3.1	7.9	7.1	9.0	9.3	8.6	8.3	10	0	2.7	9.4	0	0	0	0	0	0	1008.0	2.2	0.0	1.9																											
22	1	22	05	02	97	7.5	72	12.5	3.2	0.6	7.1	6.2	8.6	9.1	8.6	8.5	10	0	0.1	7.5	0	0	0	0	0	0	1000.0	0.1	0.0	1.2																											
23	6	22	02	02	97	6.6	83	10.9	0.5	-2.7	5.9	4.4	7.9	8.7	8.5	8.5	10	0	0.4	6.5	0	0	4	0	0	0	1007.0	0.5	0.0	1.4																											
24	0	04	02	02	97	5.3	82	12.0	-1.9	-4.2	3.5	7.2	6.4	8.0	8.3	8.5	10	0	8.4	8.8	0	0	5	0	0	0	1015.5	8.4	5.1	1.8																											
25	8	09	02	61	96	6.8	91	8.9	5.3	-2.0	7.1	5.3	7.6	8.0	8.0	8.4	20	0	1.8	0.0	0	0	0	0	0	0	1006.5	3.0	0.0	0.5																											
26	7	36	02	02	95	6.5	80	9.7	2.0	-1.9	5.3	5.6	6.5	7.8	8.1	8.4	10	0	0.3	1.3	0	0	0	0	0	0	1020.0	0.2	0.0	0.7																											
27	7	04	02	02	97	6.8	79	12.1	2.7	-0.9	5.7	5.6	6.5	7.6	7.7	8.3	10	0	0.3	3.9	0	0	4	0	0	0	1014.5	0.3	0.0	1.3																											
28	8	09	05	10	94	6.5	89	13.1	3.5	0.0	6.0	5.8	6.8	7.6	7.5	8.1	10	0	0.6	1.5	0	0	0	0	0	0	1015.5	0.2	0.0	1.5																											
29	7	09	05	01	97	12.9	65	20.5	6.5	3.4	8.9	7.8	7.6	7.9	7.6	8.1	10	0	0.0	9.8	0	0	4	1	0	0	1015.5	0.0	0.0	2.7																											
30	7	04	02	02	97	12.2	70	21.1	4.8	1.1	7.7	7.2	8.1	8.5	8.1	8.1	10	0	0.0	3.6	0	0	0	0	0	0	1014.0	0.0	0.0	2.8																											
31	8	13	02	02	97	13.1	74	17.7	10.1	7.1	9.4	9.5	9.9	9.4	8.4	8.2	00	0	2.2	0.6	0	0	0	0	0	0	1013.5	0.4	0.0	1.6																											
Monthly means																												8.0	83	14.5	3.4	0.4	6.3	6.3	7.2	7.8	7.6	7.8															1016.9				
Monthly totals																																														26.8	152.1							24.0	15.2	41.8	
Highest values																												13.8		21.1	10.1	7.1	9.4	9.5	9.9	9.4	8.6	8.5								8.4	10.9							8.4	6.7	2.8	
Lowest values																												2.2	65	8.9	-1.9	-4.2	2.8	3.2	4.8	6.2	6.5	7.2																			
1981-2010 monthly climatological averages																												84	11.6	3.7	0.7	5.7	5.7	6.7	7.0	6.8	7.0									47.3	110.9							1016.0	49.0	25.7	43.4

Key

DD: date

07GMT observations

N	cloud cover (oktas, 9=obscured)	dd	wind direction (degrees/10)
ff	wind speed (knots)		
ww	present weather code		
1	cloud decreasing	21	recent rain
2	sky not changing	60	intermittent slight rain
3	cloud increasing	61	continuous slight rain
5	haze	71	continuous slight snow
VV	visibility (00-50 metres/100, 94 very poor, 95 poor, 96 moderate, 97 good)		

Soil temperatures are for 0700GMT beneath bare soil (5, 10, 20cm) or grass (30, 50, 100cm)

09GMT observations

Temp	temperature (degC)	RH	relative humidity (%)
E	state of ground (X1,X2 slight snow, 00 dry, 10 moist, 20 wet, 40 frozen)		
Press	air pressure (mb)	SS	snow depth (cm)

24 hour readings

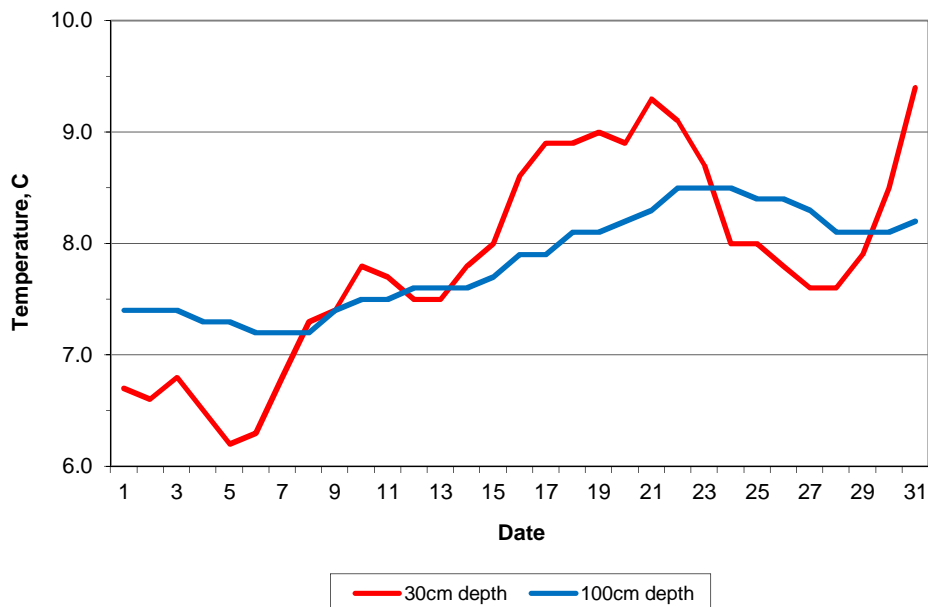
Max	maximum temperature (degC) beginning 09GMT	Min	minimum temperature (degC) ending 09GMT
Gmin	grass minimum temperature (degC) ending 09GMT	Rain	precipitation beginning 09GMT
Sun	sunshine (hours) sunrise-sunset	Rain hrs	hours of rainfall (>0.1mm/h) 09-09GMT
Fr. Hrs	hours of air frost (00-24GMT)	Pch Evap	Piche evaporation (ml) beginning 09GMT

Days with

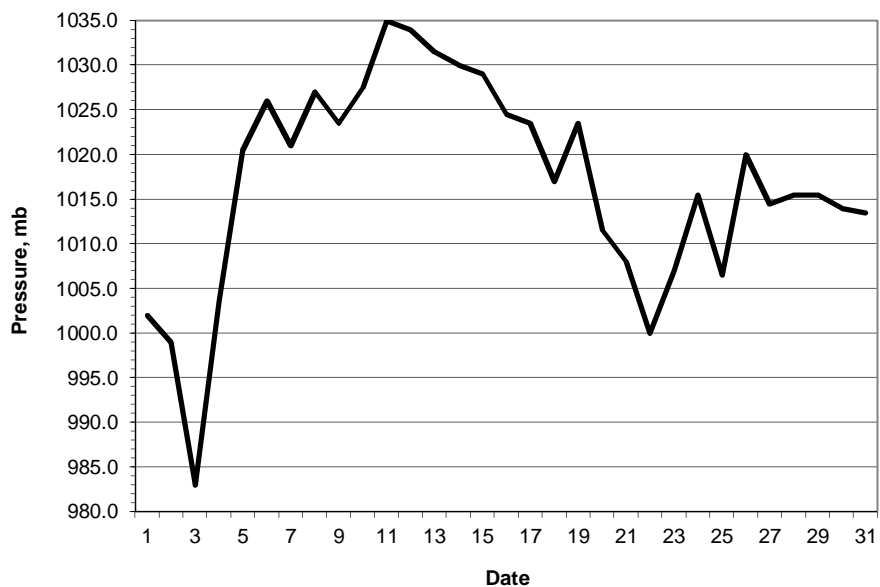
S	snow(5) or sleet(1) falling	L	50% snow cover at 09GMT	H	hail or ice pellets
T	thunder heard	G	gale	F	fog at 09GMT

This information (and data for earlier months) is also available at <http://www.met.rdg.ac.uk/~brugge>

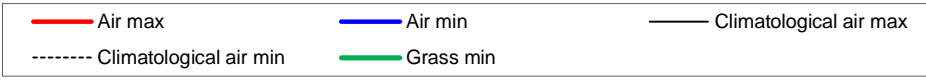
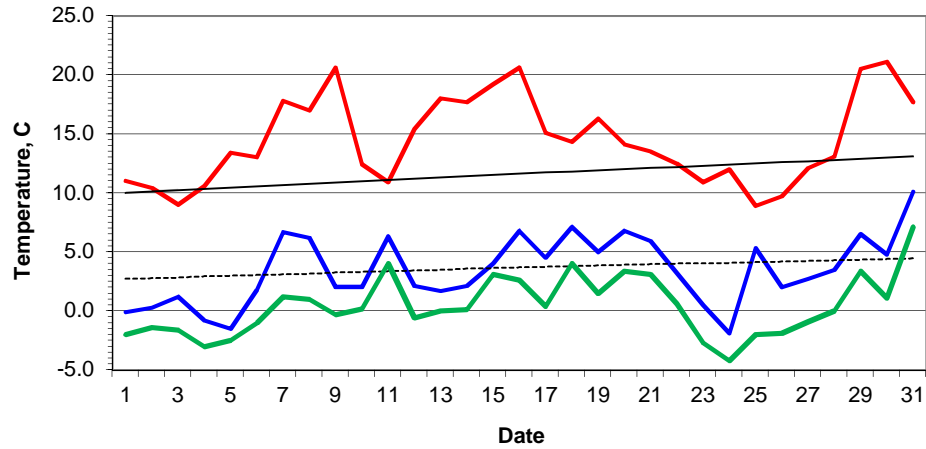
Daily soil temperatures, 0700GMT



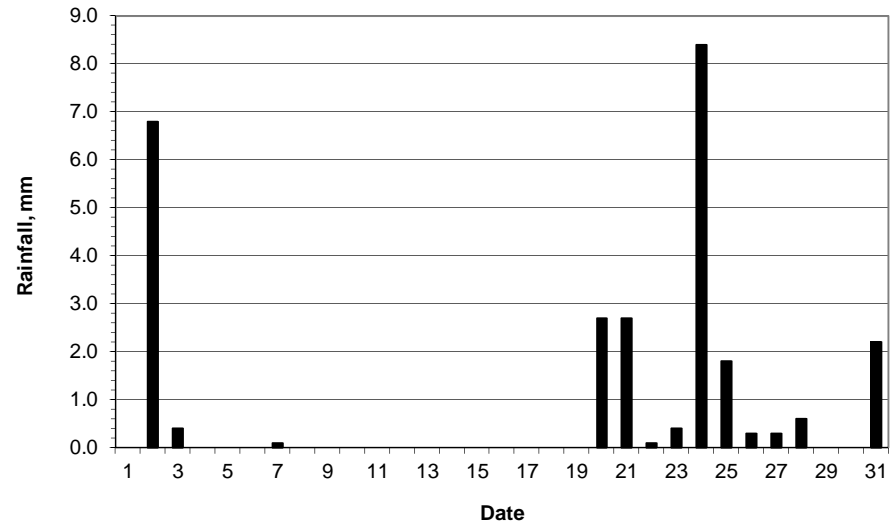
Mean sea level pressure, 0900GMT



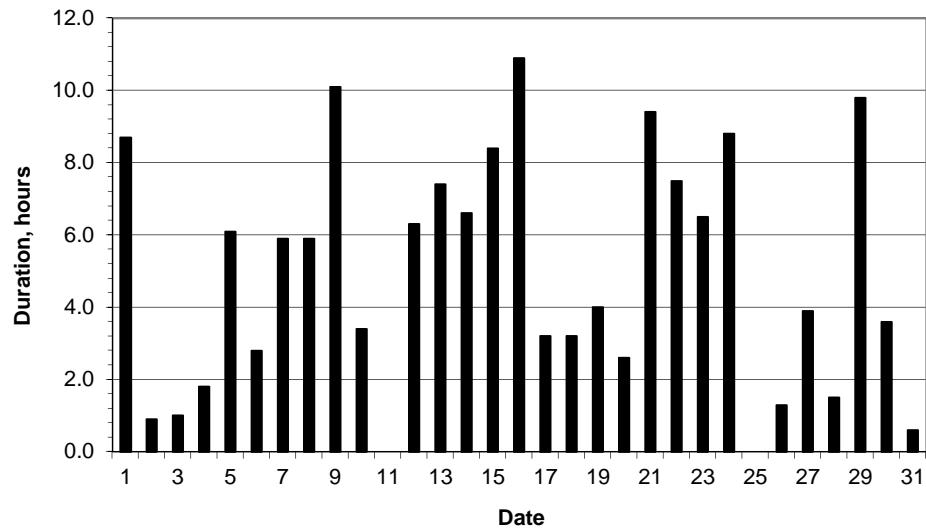
### Daily temperature extremes



### Daily rainfall



### Daily sunshine



### Daily evaporation

