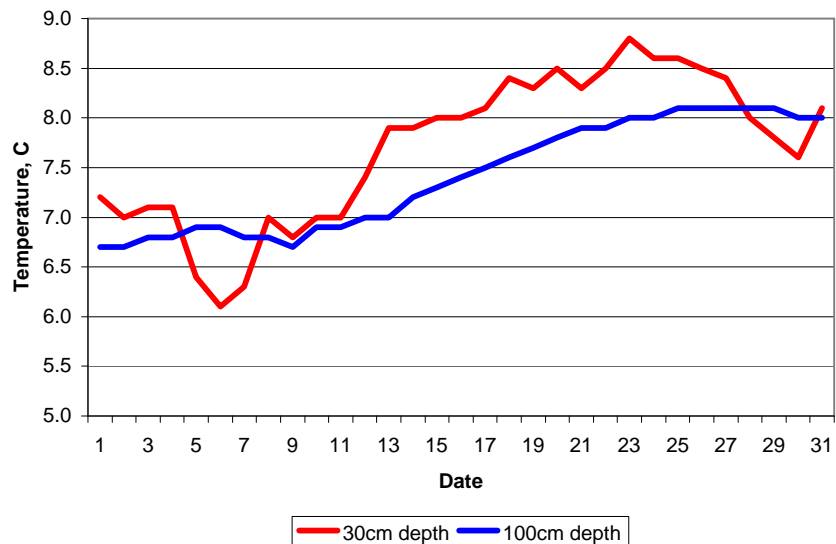


MAIDENHEAD METEOROLOGICAL OBSERVATIONS FOR MARCH 2009

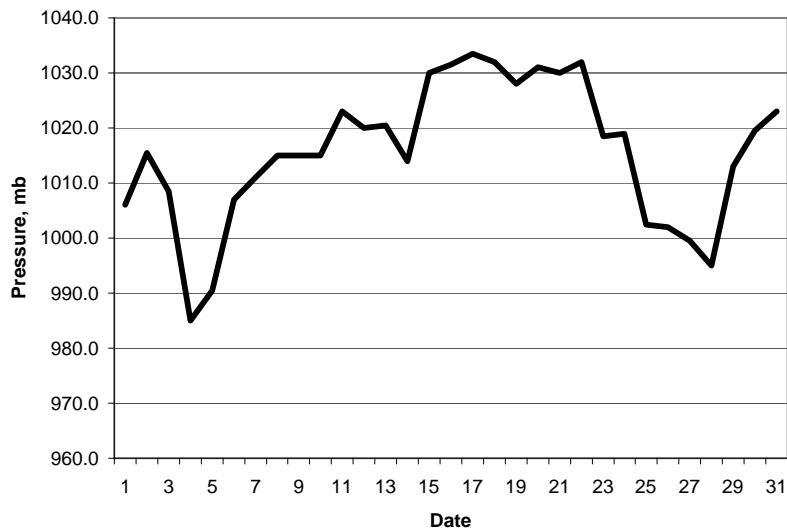
DD	N	dd	ff	ww	VV	0900GMT		Temperature			Soil temperatures (depth in cm)						E	SS	Rain	Sun	S	L	H	T	G	F	Press	Rain	Fr.	Pch			
						Temp	RH	Max	Min	Gmin	5	10	20	30	50	100												hrs	hrs	Evap			
01	8	13	02	02	96	6.8	90	12.0	2.3	0.4	6.6	6.2	6.9	7.2	7.1	6.7	10	0	0.0	2.1	0	0	0	0	0	0	1006.0	0.0	0.0	1.0	Number of days with 2009 normal Snow/sleet falling 0 2.0 50% snow cover 09GMT 0 0.2 Hail or ice pellets 1 1.0 Thunder 0 0.5 Gale 0 0.4 Fog at 09GMT 0 0.9 Air frost 7 5.4 Ground frost 12 14.7 0.2mm precipitation 11 14.6 1.0mm precipitation 7 10.1 5.0mm precipitation 1 2.5 No sunshine 1 6.7		
02	0	22	05	02	97	7.1	86	13.4	-0.5	-2.1	4.3	4.5	6.5	7.0	7.1	6.7	10	0	0.0	7.0	0	0	0	0	0	0	1015.5	0.0	1.2	1.3			
03	8	18	05	02	97	9.1	87	11.2	7.1	0.0	7.1	6.6	7.0	7.1	6.9	6.8	10	0	11.8	0.1	0	0	0	0	0	0	1008.5	11.0	0.0	0.8			
04	4	22	02	02	96	4.7	95	9.1	2.3	0.4	5.6	5.8	6.8	7.1	6.8	6.8	10	0	0.0	7.9	0	0	0	0	0	0	985.0	0.0	0.0	0.5			
05	8	04	02	02	97	2.6	94	8.1	-0.3	-1.7	4.6	4.6	5.0	6.4	6.8	6.9	10	0	0.0	3.6	0	0	0	0	0	0	990.5	0.0	1.2	0.8			
06	0	27	02	02	97	4.2	84	11.8	-2.7	-3.1	2.7	2.9	4.7	6.1	6.5	6.9	40	0	0.5	9.2	0	0	0	0	0	0	1007.0	0.5	6.8	1.4			
07	7	22	05	02	97	8.0	93	12.7	4.2	-2.5	6.1	5.6	5.9	6.3	6.2	6.8	10	0	2.0	2.3	0	0	0	0	0	0	1011.0	1.4	0.0	1.3			
08	0	26	09	01	97	7.9	74	11.0	5.2	2.8	6.5	6.5	7.2	7.0	6.6	6.8	10	0	2.4	5.9	0	0	0	0	0	0	1015.0	0.7	0.0	1.8			
09	0	23	08	02	97	8.3	80	12.3	2.3	0.1	4.4	4.5	5.8	6.8	6.7	6.7	10	0	2.5	8.8	0	0	0	0	0	0	1015.0	3.0	0.0	1.7			
10	7	27	08	02	97	10.2	90	12.6	7.0	2.9	6.7	6.4	6.9	7.0	6.9	6.9	10	0	0.6	2.0	0	0	0	0	0	0	1015.0	0.4	0.0	0.9			
11	6	23	02	02	96	4.3	91	14.3	-0.5	-1.2	4.4	4.6	6.6	7.0	6.8	6.9	10	0	0.1	4.7	0	0	0	0	0	0	1023.0	0.1	1.0	1.2			
12	6	22	05	02	97	10.7	83	12.8	4.3	0.1	8.2	7.7	7.8	7.4	7.0	7.0	10	0	tr	0.0	0	0	0	0	0	0	1020.0	0.0	0.0	0.8			
13	7	18	02	01	97	9.9	92	11.4	7.0	4.1	7.7	7.7	8.0	7.9	7.2	7.0	10	0	tr	0.1	0	0	0	0	0	0	1020.5	0.0	0.0	1.0			
14	8	19	05	02	97	10.4	78	14.4	6.2	3.6	7.9	7.5	7.9	7.9	7.5	7.2	10	0	0.0	3.3	0	0	0	0	0	0	1014.0	0.0	0.0	1.6			
15	3	18	02	02	97	10.3	79	16.4	1.7	-0.5	6.1	6.1	7.2	8.0	7.7	7.3	10	0	0.0	10.8	0	0	0	0	0	0	1030.0	0.0	0.0	1.6			
16	3	36	02	02	97	10.1	73	17.1	1.5	-0.1	5.9	6.1	7.9	8.0	7.6	7.4	10	0	0.0	10.6	0	0	0	0	0	0	1031.5	0.0	0.0	1.5			
17	3	36	02	02	97	10.9	68	16.8	2.2	0.5	6.2	6.5	7.6	8.1	7.9	7.5	10	0	0.0	11.3	0	0	0	0	0	0	1033.5	0.0	0.0	1.6			
18	3	05	02	02	97	10.4	78	16.9	3.6	1.0	6.7	7.1	8.1	8.4	7.9	7.6	10	0	0.0	11.6	0	0	0	0	0	0	1032.0	0.0	0.0	1.7			
19	2	###	02	02	97	10.4	77	16.4	0.4	-1.4	5.9	6.1	7.5	8.3	8.2	7.7	10	0	0.0	10.8	0	0	0	0	0	0	1028.0	0.0	0.0	1.8			
20	0	05	02	05	96	10.5	77	15.1	4.0	0.6	6.6	6.7	8.0	8.5	8.1	7.8	03	0	0.0	11.5	0	0	0	0	0	0	1031.0	0.0	0.0	1.9			
21	0	36	02	02	97	6.7	77	15.7	-1.2	-3.0	5.6	5.7	7.9	8.3	8.3	7.9	03	0	0.0	11.6	0	0	0	0	0	0	1030.0	0.0	3.2	1.1			
22	2	33	05	02	97	10.4	63	16.4	6.7	0.4	7.7	7.3	8.1	8.5	8.2	7.9	03	0	0.0	10.0	0	0	0	0	0	0	1032.0	0.0	0.0	1.9			
23	2	27	05	03	97	10.7	70	13.9	5.8	1.4	7.7	7.7	8.6	8.8	8.4	8.0	03	0	2.0	2.6	0	0	0	0	0	0	1018.5	1.3	0.0	2.4			
24	0	27	13	02	97	8.7	60	13.2	4.1	0.1	5.8	6.1	8.0	8.6	8.5	8.0	10	0	2.2	9.3	0	0	0	0	0	0	1019.0	3.0	0.0	2.3			
25	6	27	13	02	97	9.8	69	13.0	6.2	2.2	7.6	7.4	8.4	8.6	8.4	8.1	10	0	1.2	5.5	0	0	0	0	0	0	1002.5	1.2	0.0	2.1			
26	8	25	05	60	97	9.1	89	14.5	7.6	2.1	7.9	7.8	8.3	8.5	8.4	8.1	10	0	0.4	2.1	0	0	0	0	0	0	1002.0	1.7	0.0	1.5			
27	8	24	09	02	97	6.1	81	12.3	4.1	0.5	6.6	6.6	8.0	8.4	8.4	8.1	10	0	0.1	4.3	0	0	0	0	0	0	999.5	0.1	0.0	1.1			
28	8	32	09	60	97	7.0	72	11.4	0.9	-1.6	6.5	6.2	7.5	8.0	8.1	8.1	10	0	0.5	3.7	0	0	4	0	0	0	995.0	0.4	0.0	1.5			
29	7	27	02	03	97	6.2	71	10.9	-1.1	-3.1	5.2	5.3	7.0	7.8	7.8	8.1	10	0	0.0	5.3	0	0	0	0	0	0	1013.0	0.0	4.8	1.3			
30	0	23	02	02	97	8.7	70	14.9	-1.5	-3.5	3.9	4.6	7.0	7.6	7.7	8.0	10	0	0.0	5.8	0	0	0	0	0	0	1019.5	0.0	4.4	1.6			
31	8	22	02	02	06	9.5	83	15.6	7.2	3.9	7.8	7.9	8.0	8.1	7.9	8.0	10	0	0.0	0.6	0	0	0	0	0	0	1023.0	0.0	0.0	1.7			
Monthly means						8.4	80	13.5	3.1	0.1	6.2	6.2	7.3	7.7	7.5	7.4												1015.7				The 15th to 22nd was an exceptionally sunny period for March, coinciding with high pressure. The month overall was dry and very sunny, probably the sunniest March for more than 50 years.	
Monthly totals																			26.3	184.4							24.8	22.6	44.7				
Highest values						10.9		17.1	7.6	4.1	8.2	7.9	8.6	8.8	8.5	8.1			11.8	11.6							11.0	6.8	2.4				
Lowest values						2.6	60	8.1	-2.7	-3.5	2.7	2.9	4.7	6.1	6.2	6.7																	
1971-2000 monthly climatological averages						8.4	11.2	3.3	0.5	5.2	5.5	6.4	6.6	6.5	6.7					48.5	102.9								1015.5	47.5	24.2		44.2

Key
 DD: date
 07GMT observations
 N cloud cover (oktas, 9=obscured) dd wind direction (degrees/10)
 ff wind speed (knots)
 ww present weather code
 1 cloud decreasing 21 recent rain
 2 sky not changing 60 intermittent slight rain
 3 cloud increasing 61 continuous slight rain
 5 haze 71 continuous slight snow
 VV visibility (00-50 metres/100, 94 very poor, 95 poor, 96 moderate, 97 good)
 Soil temperatures are for 0700GMT beneath bare soil (5, 10, 20cm) or grass (30, 50, 100cm)
 09GMT observations
 Temp temperature (degC) RH relative humidity (%)
 E state of ground (X1,X2 slight snow, 00 dry, 10 moist, 20 wet, 40 frozen)
 Press air pressure (mb) SS snow depth (cm)
 24 hour readings
 Max maximum temperature (degC) beginning 09GMT Min minimum temperature (degC) ending 09GMT
 Gmin grass minimum temperature (degC) ending 09GMT Rain precipitation beginning 09GMT
 Sun sunshine (hours) sunrise-sunset Rain hrs hours of rainfall (>0.1mm/h) 09-09GMT
 Fr. Hrs hours of air frost (00-24GMT) Pch Evap Piche evaporation (ml) beginning 09GMT
 Days with
 S snow(5) or sleet(1) falling L 50% snow cover at 09GMT H hail or ice pellets
 T thunder heard G gale F fog at 09GMT
 This information (and data for earlier months) is also available at <http://www.met.rdg.ac.uk/~brugge>

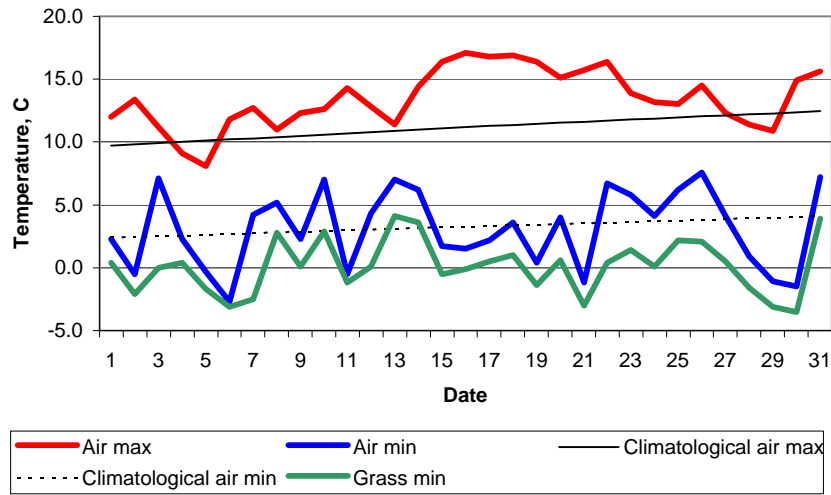
Daily soil temperatures, 0700GMT



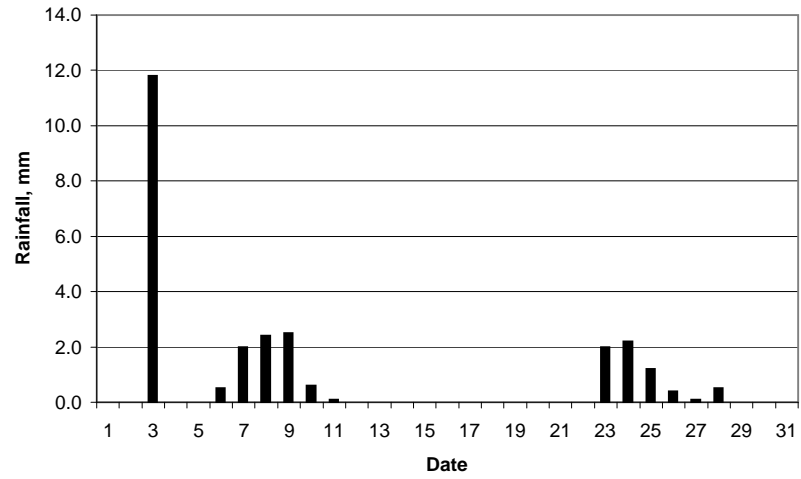
Mean sea level pressure, 0900GMT



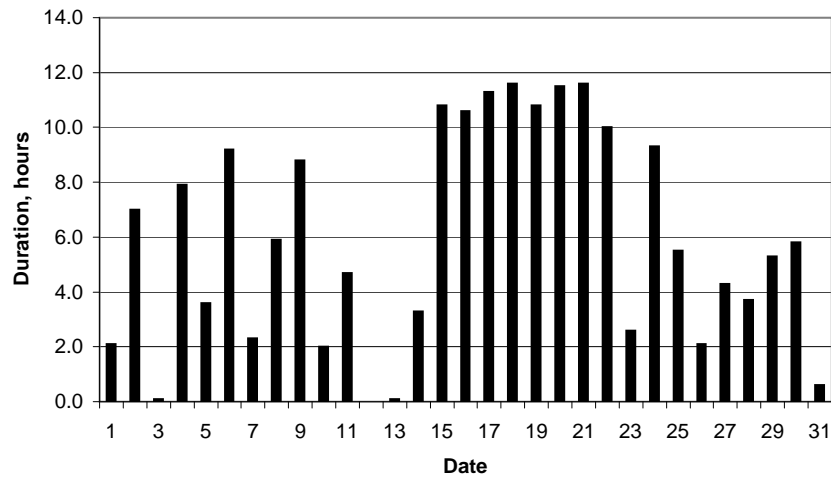
Daily temperature extremes



Daily rainfall



Daily sunshine



Daily evaporation

