

MAIDENHEAD METEOROLOGICAL OBSERVATIONS FOR MARCH 2005

DD	N	dd	ff	ww	VV	0900GMT		Temperature			Soil temperatures (depth in cm)						E	SS	Rain	Sun	S	L	H	T	G	F	Press	Rain hrs	Fr. hrs	Pch Evap	
						Temp	RH	Max	Min	Gmin	5	10	20	30	50	100															
01	8	27	05	22	96	1.6	96	6.7	-3.0	-7.9	1.7	1.7	2.9	3.9	4.4	6.0	X2	1	6.8	0.0	5	1	0	0	0	0	1009.5	5.5	0.0	0.3	Number of days with 2005 normal Snow/sleet falling 5 2.0 50% snow cover 09GM 1 0.2 Hail or ice pellets 0 1.0 Thunder 1 0.5 Gale 0 0.4 Fog at 09GMT 0 0.9 Air frost 6 5.4 Ground frost 13 14.7 0.2mm precipitation 12 14.6 1.0mm precipitation 9 10.1 5.0mm precipitation 3 2.5 No sunshine 6 6.7 A month of two halves;cooler until the 15th with snow during the first week, then milder. 21.0C on the 19th was the highest March temperature since 1990. Along with 2001, this month saw the most days with snowfall in March since 1987.
02	8	36	02	02	95	1.2	98	3.6	1.0	-0.5	2.4	2.6	3.4	4.0	4.2	5.9	10	0	1.2	0.0	5	0	0	0	0	1003.0	1.7	0.0	0.6		
03	2	36	05	02	97	0.4	73	4.3	-1.1	-3.0	0.7	1.1	2.5	3.9	4.1	5.8	40	0	tr	8.3	5	0	0	0	0	1018.5	0.0	8.2	1.4		
04	8	27	02	70	95	0.0	93	8.8	-4.4	-8.0	0.8	0.3	2.4	3.2	4.0	5.8	X1	0	3.5	1.7	5	0	0	1	0	0	1015.5	4.0	8.9	0.6	
05	1	28	05	02	97	3.8	67	7.2	0.0	-3.2	1.1	1.1	2.4	3.4	3.8	5.6	40	0	tr	6.8	0	0	0	0	0	1014.0	0.0	0.0	0.9		
06	0	27	02	01	97	1.2	75	4.8	-1.1	-5.0	1.1	1.4	2.8	3.7	4.0	5.5	X1	0	0.0	5.3	5	0	3	0	0	1030.5	0.0	2.5	1.5		
07	8	27	02	02	96	2.2	87	8.1	0.2	-5.1	1.1	1.2	2.5	3.6	4.1	5.5	10	0	0.0	0.2	0	0	0	0	0	1031.5	0.0	0.0	1.2		
08	8	27	02	02	97	5.3	84	8.0	0.8	-0.6	3.7	3.4	3.8	4.0	4.2	5.4	10	0	0.0	0.0	0	0	0	0	0	1032.0	0.0	0.0	1.2		
09	8	32	02	02	97	5.6	85	8.8	4.7	2.6	4.4	4.1	4.4	4.5	4.3	5.5	10	0	0.0	0.1	0	0	0	0	0	1036.0	0.0	0.0	1.2		
10	8	27	02	02	97	5.1	91	9.5	4.5	2.6	4.4	4.4	4.9	5.0	4.6	5.4	10	0	tr	1.6	0	0	0	0	0	1033.5	0.0	0.0	0.8		
11	8	21	05	02	97	8.1	76	10.5	3.9	-0.7	4.4	4.3	4.9	5.1	4.9	5.5	10	0	1.8	3.4	0	0	0	0	0	1019.5	1.0	0.0	1.8		
12	0	31	09	02	97	5.5	69	9.4	1.8	-1.9	3.1	3.4	4.8	5.4	5.2	5.7	10	0	tr	7.2	0	0	0	0	0	1012.0	0.0	0.0	1.8		
13	7	22	02	02	97	3.3	85	9.4	-1.8	-5.9	3.8	3.3	4.2	5.1	5.2	5.8	10	0	0.0	2.4	0	0	0	0	0	1016.0	0.0	4.3	1.1		
14	6	23	02	03	96	3.0	90	10.1	-0.5	-3.9	2.7	3.2	4.5	5.4	5.3	5.9	10	0	tr	1.3	0	0	0	0	0	1015.5	0.0	2.2	1.5		
15	8	19	05	02	97	8.8	89	12.2	3.0	-1.7	4.5	4.4	5.0	5.5	5.3	6.0	10	0	0.0	0.1	0	0	0	0	0	1019.0	0.0	0.0	1.1		
16	8	23	09	02	97	11.6	91	19.5	8.8	5.1	8.2	7.2	7.0	6.1	5.6	6.1	10	0	0.3	3.5	0	0	0	0	0	1020.5	0.5	0.0	1.4		
17	7	20	05	02	97	13.5	82	19.3	11.6	9.1	7.9	8.6	8.3	7.7	6.6	6.2	10	0	0.0	8.5	0	0	0	0	0	1026.0	0.0	0.0	1.7		
18	7	21	05	02	97	11.9	78	19.5	9.2	-0.7	5.9	8.8	8.4	8.9	8.5	7.4	6.5	10	0	0.0	7.6	0	0	0	0	0	1031.0	0.0	0.0	1.3	
19	3	20	02	02	97	10.5	88	21.0	5.0	1.5	8.6	8.3	8.5	8.9	8.0	6.9	10	0	0.0	10.7	0	0	0	0	0	1028.5	0.0	0.0	1.7		
20	8	09	05	02	97	11.6	88	13.6	9.9	5.9	10.3	10.0	9.9	9.6	8.5	7.1	10	0	0.0	2.0	0	0	0	0	0	1024.0	0.0	0.0	1.1		
21	6	11	02	03	96	10.9	75	16.1	6.9	3.2	7.9	8.1	8.9	9.2	8.5	7.4	10	0	4.2	1.6	0	0	0	0	0	1013.0	0.8	0.0	1.8		
22	8	15	05	21	96	12.4	94	14.9	10.9	6.5	10.1	10.3	10.0	9.6	8.6	7.6	10	0	1.5	0.3	0	0	0	0	0	1005.5	0.7	0.0	1.0		
23	8	18	05	21	97	12.7	84	17.7	8.3	4.0	9.4	9.4	9.8	9.7	8.7	7.9	10	0	8.7	4.3	0	0	0	0	0	1017.0	5.4	0.0	1.7		
24	8	20	05	21	96	12.0	94	16.8	9.7	6.2	10.1	10.1	10.4	10.1	9.1	8.0	10	0	0.0	2.5	0	0	0	0	0	1014.5	0.0	0.0	1.2		
25	7	23	02	02	97	11.7	88	17.1	7.2	3.4	10.6	10.1	10.0	10.0	9.3	8.3	10	0	0.0	4.2	0	0	0	0	0	1020.0	0.0	0.0	0.9		
26	0	24	05	02	97	12.3	79	17.8	4.5	0.9	8.2	8.4	9.5	10.0	9.3	8.5	10	0	0.3	7.4	0	0	0	0	0	1011.0	0.2	0.0	1.8		
27	8	27	09	02	97	9.0	90	11.4	8.1	5.5	9.4	9.4	10.0	10.0	9.3	8.6	10	0	0.0	0.1	0	0	0	0	0	1008.5	0.0	0.0	0.7		
28	0	13	05	02	96	8.3	88	16.2	5.6	1.9	8.1	8.3	9.4	9.7	9.3	8.7	10	0	0.0	7.5	0	0	0	0	0	1014.0	0.0	0.0	1.3		
29	8	12	05	10	94	7.5	90	9.4	6.4	2.0	8.2	8.4	9.9	10.1	9.4	8.7	10	0	18.2	0.0	0	0	0	0	0	1013.5	16.0	0.0	0.3		
30	8	03	05	60	94	9.4	96	10.5	7.5	5.6	8.9	8.7	9.2	9.5	9.3	8.9	10	0	1.4	0.0	0	0	0	0	0	1015.0	5.0	0.0	0.3		
31	8	36	02	21	06	8.7	95	10.9	8.3	8.0	9.0	9.2	9.5	9.4	9.1	8.8	10	0	0.6	0.0	0	0	0	0	0	1024.5	1.1	0.0	0.3		
Monthly means						7.4	86	12.0	4.4	1.0	5.9	5.9	6.6	6.9	6.6	6.8											1019.1				
Monthly totals																				48.5	96.1							41.9	26.1	35.5	
Highest values						13.5		21.0	11.6	9.1	10.6	10.3	10.4	10.1	9.4	8.9				18.2	10.7							16.0	8.9	1.8	
Lowest values						0.0	67	3.6	-4.4	-8.0	0.7	0.3	2.4	3.2	3.8	5.4															
1971-2000 monthly climatological averages						84	11.2	3.3	0.5	5.2	5.5	6.4	6.6	6.5	6.7					48.5	102.9							1015.5	47.5	24.2	44.2

PTO

Key

DD: date
07GMT observations
N cloud cover (oktas, 9=obscured) dd wind direction (degrees/10)
ff wind speed (knots)
ww present weather code
1 cloud decreasing 22 recent snow
2 sky not changing 41 fog patches
3 cloud increasing 42 fog patches
10 mist 61 continuous slight rain
21 recent rain 70 intermittent slight snow

VV visibility (00-50 metres/100, 94 very poor, 95 poor, 96 moderate, 97 good)
Soil temperatures are for 0700GMT beneath bare soil (5, 10, 20cm) or grass (30, 50, 100cm)

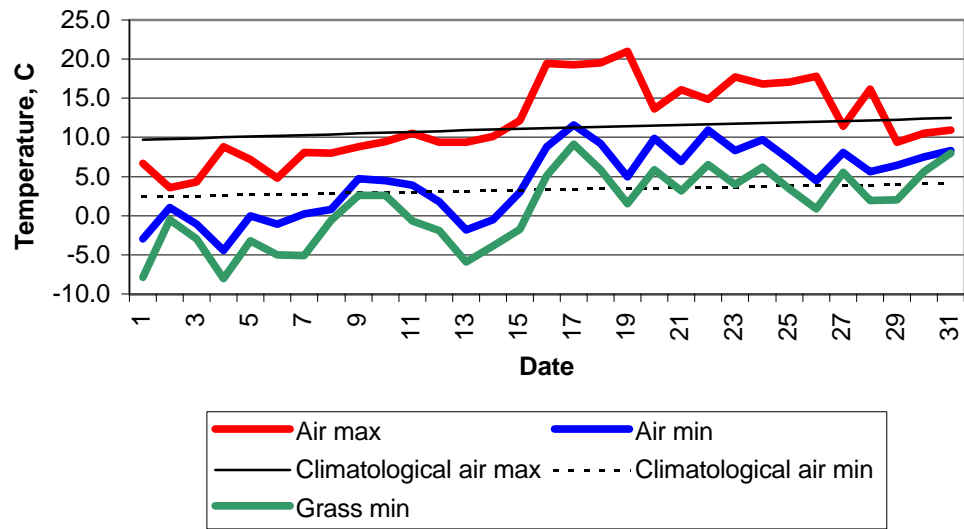
09GMT observations
Temp temperature (degC) RH relative humidity (%)
E state of ground (X1,X2 slight snow, 00 dry, 10 moist, 20 wet, 40 frozen)
Press air pressure (mb) SS snow depth (cm)

24 hour readings
Max maximum temperature (degC) beginning 09GMT Min minimum temperature (degC) ending 09GMT
Gmin grass minimum temperature (degC) ending 09GMT Rain precipitation beginning 09GMT
Sun sunshine (hours) sunrise-sunset Rain hrs hours of rainfall (>0.1mm/h) 09-09GMT
Fr. Hrs hours of air frost (00-24GMT) Pch Evap Piche evaporation (ml) beginning 09GMT

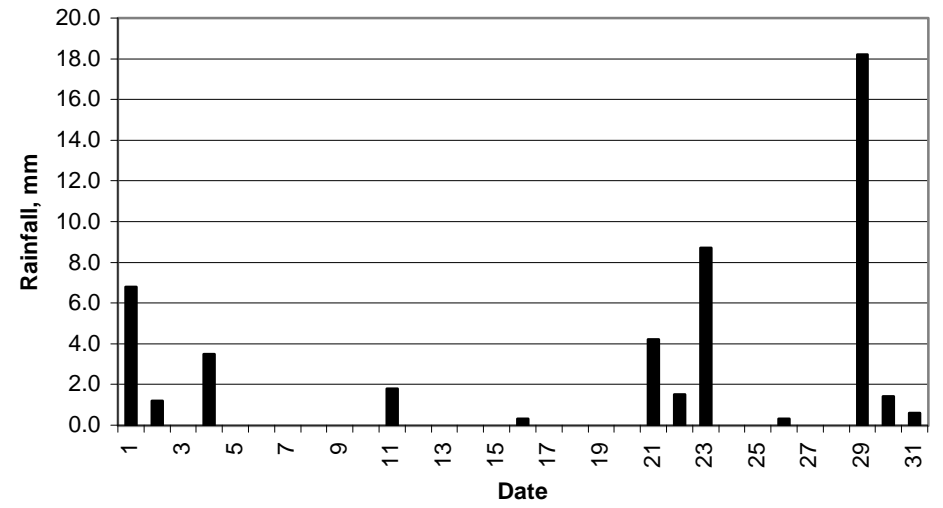
Days with
S snow(5) or sleet(1) falling L 50% snow cover at 09GMT H hail or ice pellets
T thunder heard G gale F fog at 09GMT

This information (and data for earlier months) is also available at
<http://www.met.rdg.a.uk/~brugge>

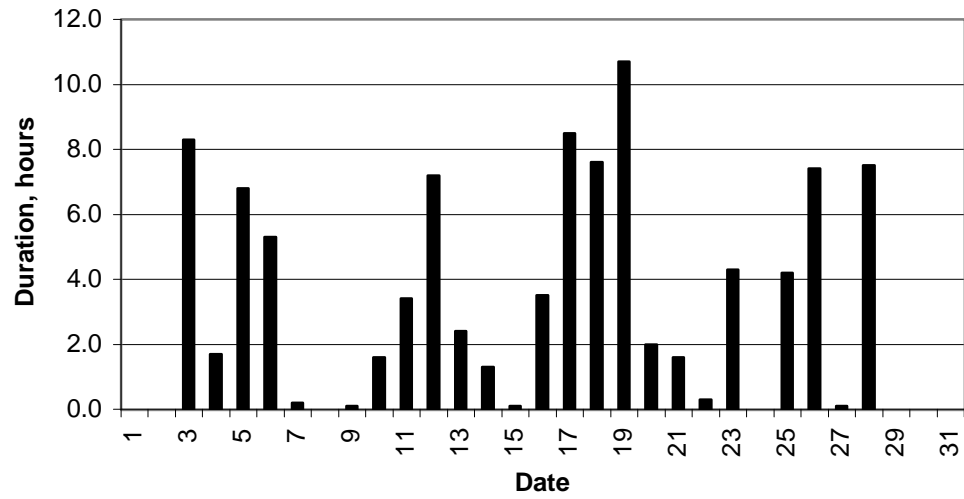
Daily temperature extremes



Daily rainfall



Daily sunshine



Daily evaporation

