

MAIDENHEAD METEOROLOGICAL OBSERVATIONS FOR JUNE 2020

DD	N	dd	ff	ww	VV	0900GMT		Temperature				Soil temperatures (depth in cm)						E	SS	Rain	Sun	S	L	H	T	G	F	Press	Rain hrs	Fr. hrs	Pch Evap				
						Temp	RH	Max	Min	Gmin	5	10	20	30	50	100																			
01	0	36	05	02	97	20.8	54	26.4	11.2	6.5	15.6	16.3	17.4	17.1	16.3	14.3	90	0	0.0	15.1	0	0	0	0	0	0	0	1022.5	0.0	0.0	4.1	Number of			
02	2	05	09	02	97	20.7	50	25.9	11.7	7.3	16.7	17.1	18.0	17.4	16.5	14.6	90	0	tr	14.0	0	0	0	0	0	0	1019.5	0.0	0.0	4.1	days with				
03	8	36	02	02	97	18.4	59	18.4	13.0	9.0	17.8	17.8	18.3	17.6	16.6	14.7	90	0	0.5	0.0	0	0	0	0	0	1008.0	2.1	0.0	1.9	2020 normal					
04	8	36	09	02	97	13.4	70	16.6	10.4	8.4	15.4	15.6	16.2	16.5	16.1	14.9	90	0	tr	0.7	0	0	0	0	0	1004.5	0.1	0.0	1.8	Snow/sleet falling					
05	6	31	09	02	97	14.9	51	17.6	11.0	6.9	14.3	14.7	15.7	15.9	15.7	14.8	90	0	tr	7.1	0	0	0	0	0	996.5	0.0	0.0	2.1	0 0.0					
06	3	27	13	02	97	12.4	56	15.2	6.4	1.9	12.6	13.1	14.7	15.4	15.3	14.7	90	0	8.8	3.3	0	0	5	1	0	0	999.0	2.7	0.0	1.2	50% snow cover 09GMT				
07	7	31	02	02	97	15.2	77	19.7	5.8	2.6	12.3	12.2	13.4	14.5	14.7	14.6	10	0	1.0	3.4	0	0	0	0	0	1009.0	0.2	0.0	1.6	0 0.0					
08	7	05	09	02	97	13.1	69	17.2	10.4	9.2	13.4	13.6	14.5	14.9	14.6	14.4	10	0	0.0	2.9	0	0	0	0	0	1019.5	0.0	0.0	2.1	Hail or ice pellets					
09	7	09	02	02	97	16.0	50	20.0	10.9	9.3	13.5	13.7	14.4	14.9	14.6	14.2	10	0	0.0	4.6	0	0	0	0	0	1021.5	0.0	0.0	2.3	1 0.0					
10	8	23	02	02	97	15.3	71	16.4	12.3	11.2	14.8	14.9	15.5	15.3	14.7	14.1	10	0	6.0	0.1	0	0	0	0	0	1015.5	4.0	0.0	0.9	Thunder					
11	8	09	02	02	97	14.9	87	20.1	11.2	10.8	14.1	14.2	14.7	15.0	14.7	14.1	10	0	0.9	1.0	0	0	0	0	0	1012.5	0.5	0.0	1.4	4 2.1					
12	1	05	09	02	97	19.4	91	21.3	13.3	12.6	15.1	14.9	15.1	15.0	14.6	14.1	10	0	2.6	1.5	0	0	0	0	0	1006.0	0.5	0.0	1.2	Gale					
13	5	00	05	02	97	18.0	72	23.7	12.4	9.8	14.9	14.7	15.1	15.2	14.7	14.1	10	0	1.0	10.7	0	0	0	1	0	0	1008.0	0.5	0.0	2.4	0 0.0				
14	4	13	05	02	97	18.9	72	22.3	12.8	10.7	15.6	15.6	16.1	16.1	15.2	14.1	10	0	0.0	9.1	0	0	0	0	0	1013.5	0.0	0.0	2.2	Fog at 09GMT					
15	1	23	02	02	97	20.3	62	24.8	10.4	8.5	14.7	14.7	15.6	16.0	15.5	14.3	10	0	10.7	8.1	0	0	0	1	0	0	1016.0	1.9	0.0	1.9	0 0.0				
16	5	18	02	02	97	19.9	72	22.2	12.5	11.5	15.9	16.0	16.8	16.6	15.7	14.4	10	0	tr	8.2	0	0	0	1	0	0	1014.5	0.0	0.0	1.8	Air frost				
17	6	33	02	02	97	18.4	82	23.4	11.8	10.5	15.8	16.1	16.6	16.7	16.0	14.6	10	0	13.2	2.2	0	0	0	0	0	1012.5	10.0	0.0	1.8	0 0.0					
18	8	27	02	61	97	15.5	94	18.5	14.8	14.9	17.1	17.1	17.4	17.1	16.1	14.6	20	0	6.1	4.0	0	0	0	0	0	1009.5	6.0	0.0	0.8	Ground frost					
19	8	23	05	61	97	15.2	90	20.1	13.8	12.2	16.2	16.2	16.5	16.5	16.0	14.8	20	0	0.1	1.9	0	0	0	0	0	1013.0	0.1	0.0	1.3	0 0.0					
20	7	18	02	02	97	17.5	74	22.3	12.3	11.5	15.7	15.6	16.1	16.4	15.8	14.8	10	0	1.4	7.3	0	0	0	0	0	1019.5	1.6	0.0	2.3	0.2mm precipitation					
21	7	27	02	01	97	18.6	85	23.2	14.4	12.0	16.4	16.6	16.9	16.8	16.0	14.9	10	0	tr	8.2	0	0	0	0	0	1015.5	0.0	0.0	2.7	15 11.0					
22	0	23	02	02	97	18.6	55	23.6	8.7	6.2	13.9	14.6	16.0	16.8	16.2	14.9	10	0	0.0	14.4	0	0	0	0	0	1025.0	0.0	0.0	3.2	1.0mm precipitation					
23	1	18	02	02	97	21.5	55	28.1	11.4	9.0	15.5	15.8	17.0	17.2	16.5	15.0	10	0	0.0	13.8	0	0	0	0	0	1024.5	0.0	0.0	4.0	11 8.3					
24	0	13	02	02	97	25.0	55	32.0	14.5	11.5	17.4	17.7	18.3	18.0	16.8	15.1	03	0	0.0	13.9	0	0	0	0	0	1020.5	0.0	0.0	6.5	5.0mm precipitation					
25	0	09	05	02	97	26.9	52	32.5	17.1	13.6	19.1	19.3	19.6	18.8	17.5	15.3	90	0	0.0	14.5	0	0	0	0	0	1015.5	0.0	0.0	5.6	5 4.2					
26	4	23	02	03	97	26.4	53	30.1	18.6	16.0	20.9	20.6	20.6	19.6	18.1	15.6	90	0	4.2	13.7	0	0	0	0	0	1008.0	1.3	0.0	3.9	No sunshine					
27	7	18	09	02	97	17.4	86	20.1	15.1	13.3	19.4	19.8	20.5	19.7	18.5	15.9	10	0	1.4	3.8	0	0	0	0	0	1003.0	0.8	0.0	2.3	1 1.6					
28	4	27	13	02	97	16.8	63	19.9	11.7	9.7	16.3	16.6	17.9	18.2	18.0	16.1	10	0	0.4	7.7	0	0	0	0	0	1010.0	0.2	0.0	2.9	Temperatures by night and					
29	8	27	09	02	97	16.3	65	20.0	12.2	9.9	16.1	16.2	17.1	18.0	17.6	16.1	10	0	tr	4.0	0	0	0	0	0	1010.0	0.0	0.0	3.3	day slightly above normal,					
30	8	23	02	03	97	15.9	75	19.0	12.7	11.4	17.0	16.7	17.4	17.6	17.2	16.1	03	0	0.2	0.2	0	0	0	0	0	1008.0	0.2	0.0	1.6	wetter than average but					
Monthly means						18.1	68	22.0	12.2	9.9	15.8	15.9	16.6	16.7	16.1	14.8												1012.7				sunshine duration close to			
Monthly totals																					58.5	199.4							32.7	0.0	75.2	average. A hot spell close			
Highest values						26.9		32.5	18.6	16.0	20.9	20.6	20.6	19.7	18.5	16.1					13.2	15.1							10.0	0.0	6.5	to the end of he month saw			
Lowest values						12.4	50	15.2	5.8	1.9	12.3	12.2	13.4	14.5	14.6	14.1																	30C reached on three days.		
1981-2010 monthly climatological averages						72	20.9	11.3	9.5	14.9	15.2	16.1	16.0	15.2	13.7							47.1	190.1									More rain days than normal			
																																	for June with thunder heard		
																																		on four days - all	
																																		thunderstorm occurrences	
																																			were slight in intensity.

Key

DD: date

07GMT observations

N	cloud cover (oktas, 9=obscured)	dd	wind direction (degrees/10)
ff	wind speed (knots)		
ww	present weather code		
1	cloud decreasing	60	intermittent light rain
2	sky not changing	61	continuous slight rain
3	cloud increasing		
5	haze		

VV visibility (00-50 metres/100, 94 very poor, 95 poor, 96 moderate, 97 good)

Soil temperatures are for 0700GMT beneath bare soil (5, 10, 20cm) or grass (30, 50, 100cm)

09GMT observations

Temp	temperature (degC)	RH	relative humidity (%)
E	state of ground (00 dry, 10 moist, 20 wet, 90 cracked)	SS	snow depth (cm)
Press	air pressure (mb)		

24 hour readings

Max	maximum temperature (degC) beginning 09GMT	Min	minimum temperature (degC) ending 09GMT
Gmin	grass minimum temperature (degC) ending 09GMT	Rain	precipitation beginning 09GMT
Sun	sunshine (hours) sunrise-sunset	Rain hrs	hours of rainfall (>0.1mm/h) 09-09GMT
Fr. Hrs	hours of air frost (00-24GMT)	Pch Evap	Piche evaporation (ml) beginning 09GMT

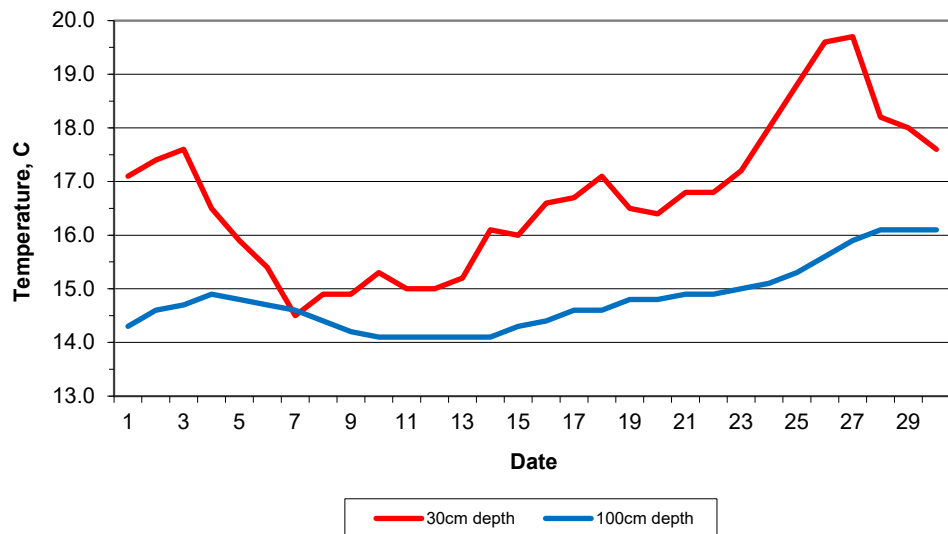
Days with

S	snow(5) or sleet(1) falling	L	50% snow cover at 09GMT	H	hail or ice pellets
T	thunder heard	G	gale	F	fog at 09GMT

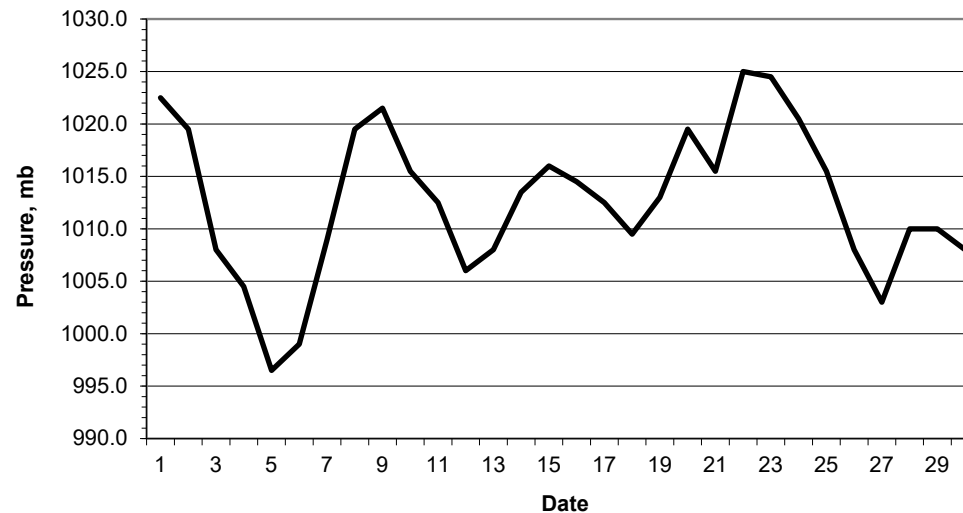
This information (and data for earlier months) is also available at

<http://www.met.rdg.ac.uk/~brugge>

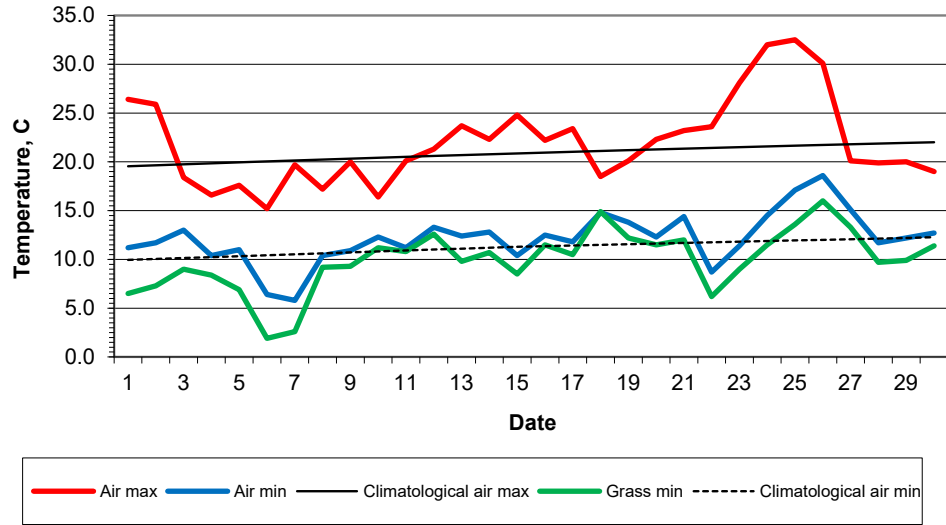
Daily soil temperatures, 0700GMT



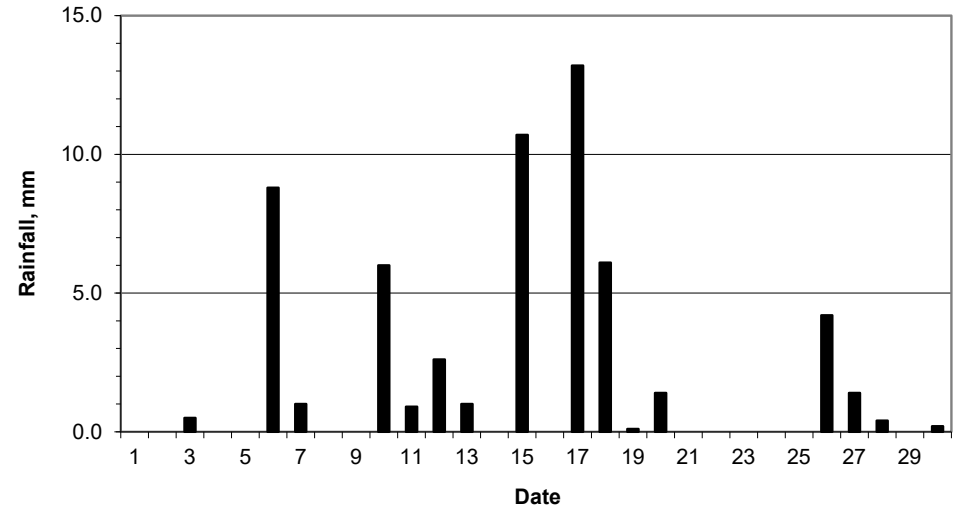
Mean sea level pressure, 0900GMT



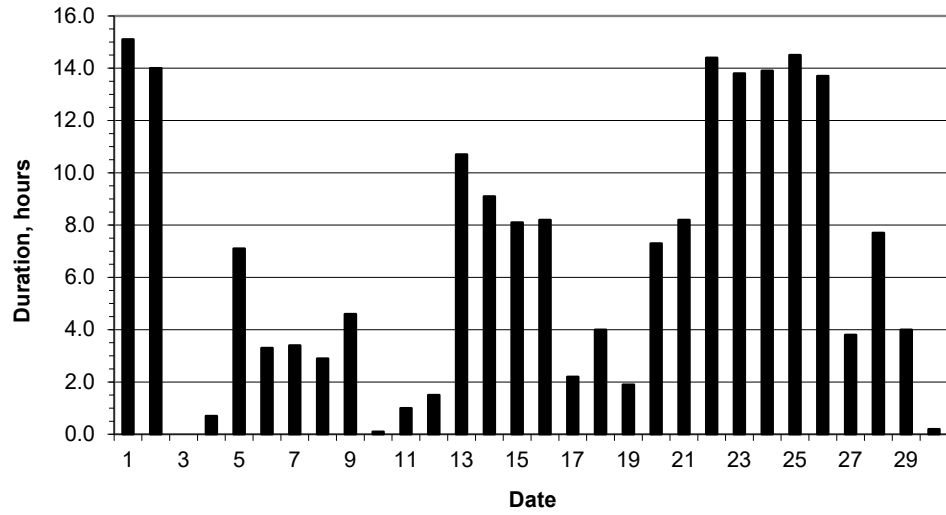
Daily temperature extremes



Daily rainfall



Daily sunshine



Daily evaporation

