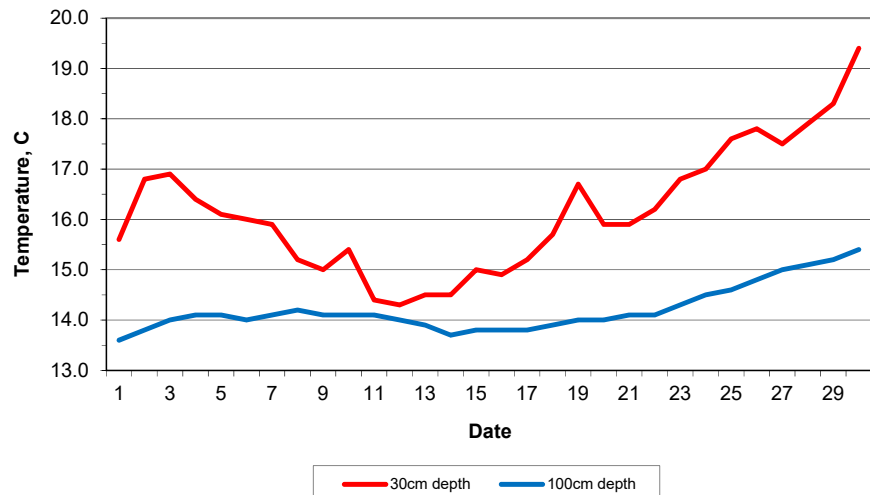


MAIDENHEAD METEOROLOGICAL OBSERVATIONS FOR JUNE 2019

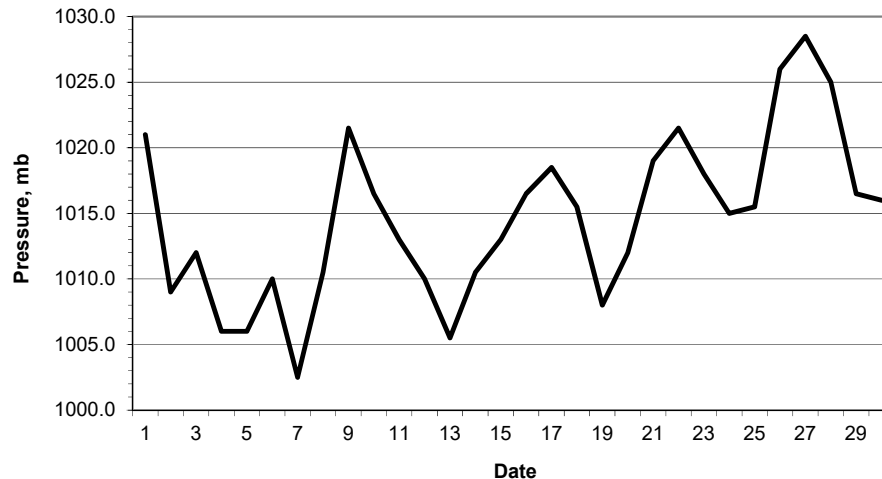
		0900GMT			Temperature			Soil temperatures (depth in cm)								Rain	Fr.	Pch																											
DD	N	dd	ff	ww	VV	Temp	RH	Max	Min	Gmin	5	10	20	30	50	100	E	SS	Rain	Sun	S	L	H	T	G	F	Press	hrs	hrs	Evap															
01	1	18	02	02	97	19.8	66	27.0	9.6	7.2	14.4	14.6	15.9	15.6	15.0	13.6	90	0	0.0	10.5	0	0	0	0	0	0	1021.0	0.0	0.0	3.3	Number of														
02	7	18	02	02	97	22.3	59	25.9	13.7	10.6	17.7	17.6	17.5	16.8	15.6	13.8	90	0	0.1	4.2	0	0	0	0	0	0	1009.0	0.1	0.0	2.9	days with														
03	2	23	05	02	97	17.5	61	21.1	9.3	6.9	15.2	15.7	17.2	16.9	15.8	14.0	90	0	tr	6.9	0	0	0	0	0	0	1012.0	0.0	0.0	2.4	2019 normal														
04	8	13	02	02	97	16.0	63	18.0	9.6	6.6	15.4	15.6	16.6	16.4	15.8	14.1	90	0	1.1	2.0	0	0	0	0	0	0	1006.0	1.1	0.0	1.6	Snow/sleet falling														
05	8	23	05	02	97	16.4	60	19.3	10.9	8.0	15.0	15.5	16.5	16.1	15.6	14.1	90	0	0.0	5.5	0	0	0	0	0	0	1006.0	0.0	0.0	2.6	0 0.0														
06	6	27	05	02	97	16.7	51	19.8	8.2	6.0	15.5	15.7	16.3	16.0	15.5	14.0	90	0	3.5	12.0	0	0	0	0	0	0	1010.0	2.7	0.0	3.0	50% snow cover 09GMT														
07	8	09	02	60	97	13.2	93	17.9	10.9	7.6	15.0	15.6	16.2	15.9	15.4	14.1	10	0	8.6	1.7	0	0	0	0	0	0	1002.5	7.8	0.0	0.8	0 0.0														
08	8	27	09	21	97	13.8	83	18.8	11.0	11.5	14.1	14.3	15.2	15.2	15.0	14.2	10	0	0.0	9.6	0	0	0	0	0	0	1010.5	0.0	0.0	2.5	Hail or ice pellets														
09	3	18	02	02	07	17.1	58	20.2	6.4	4.7	12.2	12.7	14.8	15.0	14.9	14.1	10	0	2.6	8.8	0	0	0	0	0	0	1021.5	1.8	0.0	2.1	0 0.0														
10	8	09	05	60	97	12.3	90	13.7	10.2	9.5	14.3	14.4	15.5	15.4	14.9	14.1	10	0	24.9	0.0	0	0	0	0	0	0	1016.5	15.0	0.0	0.4	Thunder														
11	8	05	02	21	09	12.3	96	14.5	9.7	9.8	13.1	13.3	14.0	14.4	14.4	14.1	20	0	0.2	0.2	0	0	0	0	0	0	1013.0	0.4	0.0	0.6	0 2.1														
12	7	36	05	02	97	13.1	85	16.0	10.6	10.0	13.5	13.8	14.5	14.3	14.1	14.0	10	0	9.7	0.6	0	0	0	0	0	0	1010.0	13.2	0.0	0.5	Gale														
13	8	00	09	02	96	12.6	94	14.9	11.3	10.5	13.5	14.0	14.5	14.5	14.2	13.9	10	0	5.8	13.1	0	0	0	0	0	0	1005.5	7.5	0.0	0.8	0 0.0														
14	6	18	09	02	97	14.9	83	19.8	11.7	10.5	14.0	14.2	14.7	14.5	14.1	13.7	10	0	0.0	6.9	0	0	0	0	0	0	1010.5	0.0	0.0	2.1	Fog at 09GMT														
15	6	18	05	02	97	18.3	64	19.5	9.4	8.5	14.0	14.5	14.8	15.0	14.5	13.8	10	0	0.6	3.8	0	0	0	0	0	0	1013.0	0.5	0.0	1.7	0 0.0														
16	7	18	05	02	96	15.6	90	20.7	7.2	6.4	14.2	14.5	15.0	14.9	14.4	13.8	10	0	0.0	5.1	0	0	0	0	0	0	1016.5	0.0	0.0	2.0	Air frost														
17	6	18	05	02	96	17.2	64	21.5	10.1	9.0	14.4	14.8	15.3	15.2	14.5	13.8	10	0	0.0	8.4	0	0	0	0	0	0	1018.5	0.0	0.0	2.0	0 0.0														
18	8	23	02	02	97	17.8	69	18.7	9.3	8.0	14.3	14.5	15.5	15.7	14.7	13.9	10	0	10.2	2.3	0	0	0	0	0	0	1015.5	4.0	0.0	0.5	Ground frost														
19	8	36	05	02	95	16.5	91	20.5	13.9	11.5	14.5	15.0	15.7	16.7	14.8	14.0	20	0	1.1	0.3	0	0	0	0	0	0	1008.0	1.7	0.0	0.9	0 0.0														
20	2	27	02	02	97	18.1	67	20.1	11.7	10.9	14.4	15.0	16.0	15.9	14.9	14.0	10	0	tr	5.5	0	0	0	0	0	0	1012.0	0.0	0.0	2.1	0.2mm precipitation														
21	1	27	05	02	97	17.5	62	22.6	8.1	8.2	14.7	13.8	15.2	15.9	15.2	14.1	10	0	0.0	10.0	0	0	0	0	0	0	1019.0	0.0	0.0	2.4	12 11.0														
22	1	13	02	02	97	19.1	57	24.0	9.1	8.9	14.2	14.7	16.0	16.2	15.3	14.1	10	0	0.0	13.9	0	0	0	0	0	0	1021.5	0.0	0.0	3.7	1.0mm precipitation														
23	7	09	02	02	97	20.3	73	24.6	12.0	10.9	16.6	16.6	16.9	16.8	15.8	14.3	03	0	tr	0.8	0	0	0	0	0	0	1018.0	0.0	0.0	2.5	10 8.3														
24	7	09	02	01	97	22.0	78	25.5	16.3	14.0	17.7	17.7	17.8	17.0	16.0	14.5	03	0	3.9	0.9	0	0	0	0	0	0	1015.0	3.5	0.0	1.6	5.0mm precipitation														
25	8	09	02	60	95	19.7	94	22.5	17.6	15.9	18.5	18.6	18.6	17.6	16.4	14.6	10	0	0.1	0.4	0	0	0	0	0	0	1015.5	0.1	0.0	1.0	5 4.2														
26	8	09	02	02	97	16.7	89	21.9	15.7	14.5	17.2	17.8	18.1	17.8	16.6	14.8	10	0	0.0	6.1	0	0	0	0	0	0	1026.0	0.0	0.0	1.9	No sunshine														
27	1	09	09	02	97	18.6	61	25.2	13.2	12.6	15.6	16.3	17.4	17.5	16.6	15.0	03	0	0.0	11.9	0	0	0	0	0	0	1028.5	0.0	0.0	3.4	1 1.6														
28	6	13	09	02	97	18.9	66	25.5	12.7	11.6	16.9	17.1	17.9	17.9	17.0	15.1	03	0	0.0	12.9	0	0	0	0	0	0	1025.0	0.0	0.0	3.5	A wet month with sunshine														
29	0	09	02	01	97	24.6	64	33.7	14.2	14.0	17.7	17.8	18.5	18.3	17.2	15.2	03	0	0.0	12.9	0	0	0	0	0	0	1016.5	0.0	0.0	4.8	and mean temperatures														
30	7	27	05	03	97	20.2	65	24.7	14.1	12.5	18.7	19.2	20.0	19.4	17.8	15.4	03	0	0.0	10.6	0	0	0	0	0	0	1016.0	0.0	0.0	2.9	close to normal. 33.7C on the 29th was the highest June temperature since 34.2C in June 1976.														
Monthly means							17.3	73	21.3	11.3	9.9	15.2	15.5	16.3	16.2	15.4	14.2											1014.6																	
Monthly totals																	72.4	187.8											59.4	0.0	62.5	Maidenhead had just 24.9 mm of rain on the 10th - much drier than locations just to the south - and this was the wettest June day since 2008. Only 133.4h of sunshine by the end of the 25th.													
Highest values							24.6	33.7	17.6	15.9	18.7	19.2	20.0	19.4	17.8	15.4											24.9	13.9											15.0	0.0	4.8				
Lowest values							12.3	51	13.7	6.4	4.7	12.2	12.7	14.0	14.3	14.1	13.6																												
1981-2010 monthly climatological averages							72	20.9	11.3	9.5	14.9	15.2	16.1	16.0	15.2	13.7											47.1	190.1											1016.7	33.6	0.0	71.7			

Key
 DD: date
 07GMT observations
 N cloud cover (oktas, 9=obscured) dd wind direction (degrees/10)
 ff wind speed (knots)
 ww present weather code
 1 cloud decreasing 60 intermittent light rain
 2 sky not changing 61 continuous slight rain
 3 cloud increasing
 5 haze
 VV visibility (00-50 metres/100, 94 very poor, 95 poor, 96 moderate, 97 good)
 Soil temperatures are for 0700GMT beneath bare soil (5, 10, 20cm) or grass (30, 50, 100cm)
 09GMT observations
 Temp temperature (degC) RH relative humidity (%)
 E state of ground (00 dry, 10 moist, 20 wet, 90 cracked) SS snow depth (cm)
 Press air pressure (mb)
 24 hour readings
 Max maximum temperature (degC) beginning 09GMT Min minimum temperature (degC) ending 09GMT
 Gmin grass minimum temperature (degC) ending 09GMT Rain precipitation beginning 09GMT
 Sun sunshine (hours) sunrise-sunset Rain hrs hours of rainfall (>0.1mm/h) 09-09GMT
 Fr. Hrs hours of air frost (00-24GMT) Pch Evap Piche evaporation (ml) beginning 09GMT
 Days with
 S snow(5) or sleet(1) falling L 50% snow cover at 09GMT H hail or ice pellets
 T thunder heard G gale F fog at 09GMT
 This information (and data for earlier months) is also available at <http://www.met.rdg.ac.uk/~brugge>

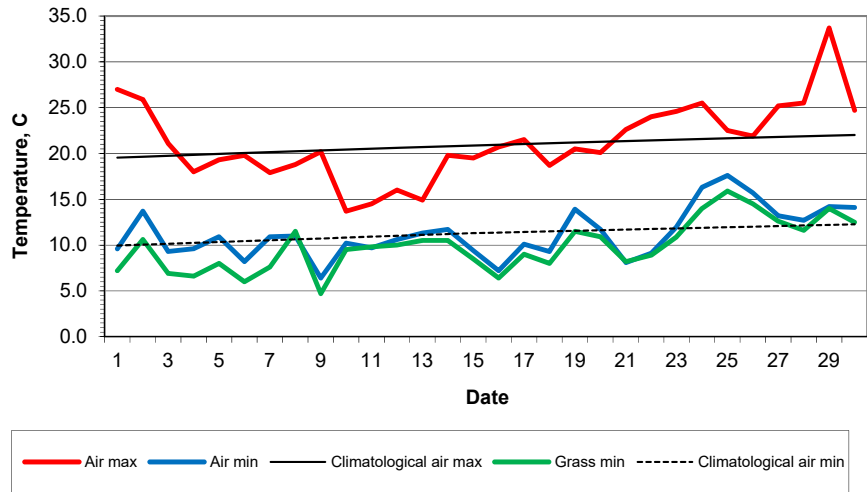
Daily soil temperatures, 0700GMT



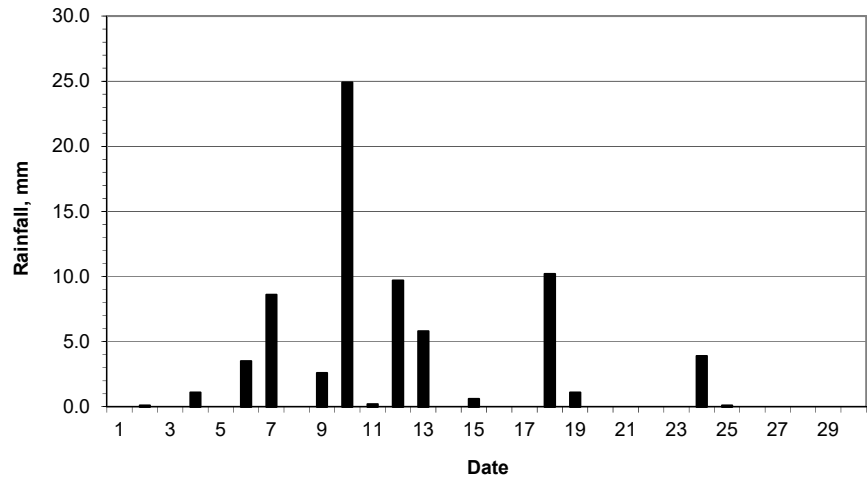
Mean sea level pressure, 0900GMT



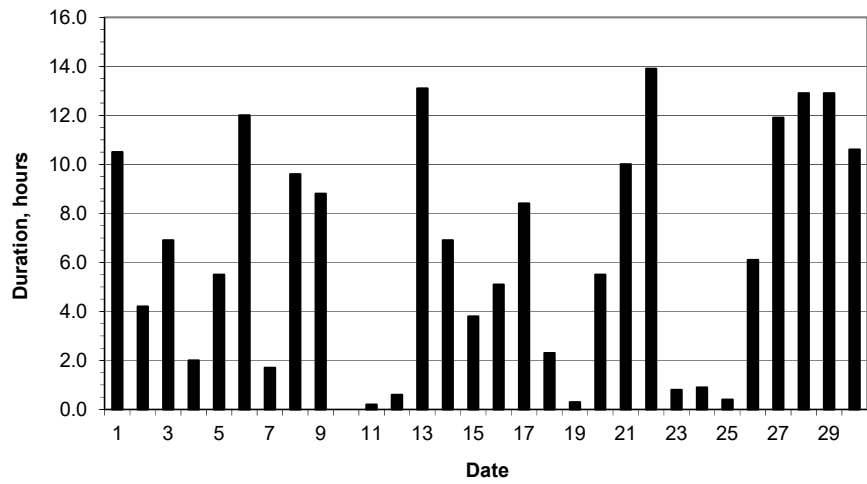
Daily temperature extremes



Daily rainfall



Daily sunshine



Daily evaporation

