

MAIDENHEAD METEOROLOGICAL OBSERVATIONS FOR JUNE 2018

DD	N	dd	ff	ww	VV	0900GMT		Temperature				Soil temperatures (depth in cm)						E	SS	Rain	Sun	S	L	H	T	G	F	Press	Rain hrs	Fr. hrs	Pch Evap	
						Temp	RH	Max	Min	Gmin	5	10	20	30	50	100																
01	8	00	00	02	96	18.4	86	22.0	15.6	14.5	17.6	17.6	17.5	16.7	15.6	13.9	10	0	0.0	1.8	0	0	0	0	0	0	0	1017.5	0.0	0.0	1.3	Number of days with 2018 normal Snow/sleet falling 0 0.0 2.8 50% snow cover 09GMT 0 2.5 Hail or ice pellets 0 2.1 Thunder 0 2.1 Gale 0 2.3 Fog at 09GMT 0 2.5 Air frost 0 3.0 Ground frost 0 2.4 0.2mm precipitation 5 11.0 1.0mm precipitation 1 8.3 5.0mm precipitation 0 4.2 No sunshine 1 1.6 Very warm (especially in the final week) , sunny and dry. June 2017 was 0.3 degC warmer, but it was the sunniest June since 1976 and the driest since 1925 when many rainfall stations in the town reported no rainfall at all. In June 1962 we had 3.3 mm in the town. Winds blowing from E and NE on almost half the days.
02	8	27	02	02	96	17.9	82	24.7	14.7	13.4	17.7	17.6	17.5	17.0	15.8	14.0	03	0	0.0	9.4	0	0	0	0	0	0	1018.0	0.0	0.0	2.0		
03	4	31	02	02	97	20.9	71	26.6	11.8	10.8	17.3	17.0	17.4	17.2	16.3	14.2	03	0	1.1	13.1	0	0	0	0	0	0	1018.5	0.3	0.0	2.6		
04	8	09	02	02	97	16.7	91	19.2	14.8	13.6	17.8	18.0	18.4	18.0	16.7	14.4	10	0	tr	0.2	0	0	0	0	0	0	1017.0	0.0	0.0	1.2		
05	8	04	05	02	97	12.9	85	18.7	12.8	12.7	15.5	15.9	16.7	17.0	16.4	14.5	10	0	0.0	6.0	0	0	0	0	0	0	1017.5	0.0	0.0	1.8		
06	7	04	05	02	97	14.6	66	23.0	8.7	7.9	14.4	14.5	15.4	16.1	15.8	14.6	03	0	0.0	12.0	0	0	0	0	0	0	1015.5	0.0	0.0	2.8		
07	7	09	02	02	97	16.0	72	20.1	11.9	11.5	16.3	16.6	17.1	16.9	16.1	14.5	03	0	tr	0.0	0	0	0	0	0	0	1016.0	0.0	0.0	2.0		
08	8	09	05	02	97	17.6	65	22.4	13.9	14.1	16.6	16.6	17.0	16.6	16.0	14.6	00	0	0.0	5.2	0	0	0	0	0	0	1017.5	0.0	0.0	2.5		
09	8	09	05	02	97	14.2	81	21.9	12.2	11.9	16.7	16.8	17.5	17.1	16.2	14.6	00	0	0.3	3.2	0	0	0	0	0	0	1016.5	0.5	0.0	1.8		
10	8	09	02	02	97	16.3	79	24.2	14.2	13.1	17.3	17.5	18.0	17.4	16.5	14.7	03	0	0.0	10.2	0	0	0	0	0	0	1014.5	0.0	0.0	2.1		
11	3	09	05	02	97	19.1	61	26.1	11.8	11.0	17.2	17.4	18.0	17.7	16.7	14.9	03	0	0.0	14.3	0	0	0	0	0	0	1013.5	0.0	0.0	3.9		
12	0	04	05	02	97	17.3	62	18.9	11.8	10.5	16.8	17.2	18.2	18.0	17.0	15.0	03	0	tr	4.9	0	0	0	0	0	0	1016.5	0.0	0.0	1.6		
13	1	00	02	02	97	18.4	61	22.5	7.7	7.1	15.3	15.6	16.7	17.0	16.6	15.1	03	0	tr	6.7	0	0	0	0	0	0	1018.5	0.0	0.0	3.1		
14	8	22	09	60	97	15.5	89	23.1	14.6	12.3	17.3	17.7	17.9	17.5	16.6	15.1	90	0	0.3	7.1	0	0	0	0	0	0	1008.5	0.2	0.0	2.3		
15	3	27	02	03	97	19.3	58	22.4	9.2	7.9	16.0	16.1	17.0	17.2	16.6	15.2	90	0	0.0	9.3	0	0	0	0	0	0	1016.0	0.0	0.0	3.1		
16	6	22	02	02	97	18.0	57	18.9	13.0	12.5	17.2	17.3	17.9	17.5	16.7	15.2	90	0	0.6	2.3	0	0	0	0	0	0	1014.0	1.5	0.0	2.5		
17	8	27	02	60	97	15.9	76	19.3	12.0	9.7	16.3	16.4	17.1	17.0	16.6	15.3	10	0	0.2	1.3	0	0	0	0	0	0	1016.5	0.2	0.0	1.6		
18	7	27	05	02	97	17.2	76	25.5	14.5	13.6	17.1	17.1	17.3	17.0	16.4	15.3	90	0	0.0	8.0	0	0	0	0	0	0	1018.5	0.0	0.0	3.0		
19	7	27	05	02	97	20.7	70	23.9	16.7	14.6	18.4	18.7	18.9	18.0	17.0	15.3	90	0	0.0	2.2	0	0	0	0	0	0	1022.5	0.0	0.0	2.0		
20	8	22	05	02	97	17.6	88	24.8	15.1	13.5	18.1	18.3	18.7	18.1	17.1	15.5	90	0	0.0	5.1	0	0	0	0	0	0	1020.0	0.0	0.0	2.4		
21	5	31	09	02	97	16.3	50	21.5	9.5	7.0	16.2	16.7	17.9	17.9	17.2	15.5	90	0	0.0	13.7	0	0	0	0	0	0	1024.5	0.0	0.0	3.9		
22	1	31	02	02	97	17.7	56	23.6	8.9	7.6	15.5	15.7	17.7	17.5	17.1	15.6	90	0	0.0	15.0	0	0	0	0	0	0	1030.5	0.0	0.0	3.3		
23	5	31	05	03	97	19.8	39	24.1	9.2	7.1	16.1	16.3	17.5	17.5	17.1	15.7	90	0	0.0	9.4	0	0	0	0	0	0	1029.0	0.0	0.0	3.6		
24	6	31	02	02	97	19.8	51	26.4	10.8	9.5	16.2	16.4	17.9	17.7	17.1	15.8	90	0	0.0	14.1	0	0	0	0	0	0	1025.0	0.0	0.0	4.3		
25	0	27	05	02	97	23.7	47	29.8	11.4	9.5	18.3	18.5	18.7	18.1	17.4	15.9	90	0	0.0	15.3	0	0	0	0	0	0	1025.5	0.0	0.0	4.6		
26	0	09	02	02	97	23.4	55	30.0	12.9	8.8	19.3	19.9	19.9	18.8	18.0	16.0	90	0	0.0	15.3	0	0	0	0	0	0	1026.0	0.0	0.0	4.6		
27	7	09	02	03	97	15.6	78	28.0	12.2	10.3	18.4	18.9	19.9	19.3	18.2	16.1	90	0	0.0	12.7	0	0	0	0	0	0	1026.0	0.0	0.0	4.0		
28	8	04	02	02	97	16.2	81	27.9	12.2	11.4	18.3	18.8	19.7	19.4	18.3	16.2	90	0	0.0	7.9	0	0	0	0	0	0	1025.0	0.0	0.0	3.3		
29	0	04	05	02	97	20.0	57	28.1	13.3	12.3	18.2	18.7	19.8	19.5	18.5	16.4	90	0	0.0	15.0	0	0	0	0	0	0	1022.0	0.0	0.0	4.4		
30	6	04	02	03	97	19.8	61	29.1	13.2	11.9	19.2	19.4	20.0	19.6	18.6	16.5	90	0	0.0	12.2	0	0	0	0	0	0	1016.5	0.0	0.0	4.9		
Monthly means						17.9	68	23.9	12.4	11.1	17.1	17.3	18.0	17.7	16.9	15.2												1019.4				
Monthly totals																					2.5	252.9							2.7	0.0	86.5	
Highest values						23.7		30.0	16.7	14.6	19.3	19.9	20.0	19.6	18.6	16.5				1.1	15.3							1.5	0.0	4.9		
Lowest values						12.9	39	18.7	7.7	7.0	14.4	14.5	15.4	16.1	15.6	13.9																
1981-2010 monthly climatological averages						72	20.9	11.3	9.5	14.9	15.2	16.1	16.0	15.2	13.7						47.1	190.1							1016.7	33.6	0.0	71.7

Key

DD: date

07GMT observations

N cloud cover (oktas, 9=obscured) dd wind direction (degrees/10)
ff wind speed (knots)
ww present weather code
1 cloud decreasing 60 intermittent light rain
2 sky not changing 61 continuous slight rain
3 cloud increasing
5 haze

VV visibility (00-50 metres/100, 94 very poor, 95 poor, 96 moderate, 97 good)

Soil temperatures are for 0700GMT beneath bare soil (5, 10, 20cm) or grass (30, 50, 100cm)

09GMT observations

Temp temperature (degC) RH relative humidity (%)
E state of ground (00 dry, 10 moist, 20 wet, 90 cracked) SS snow depth (cm)
Press air pressure (mb)

24 hour readings

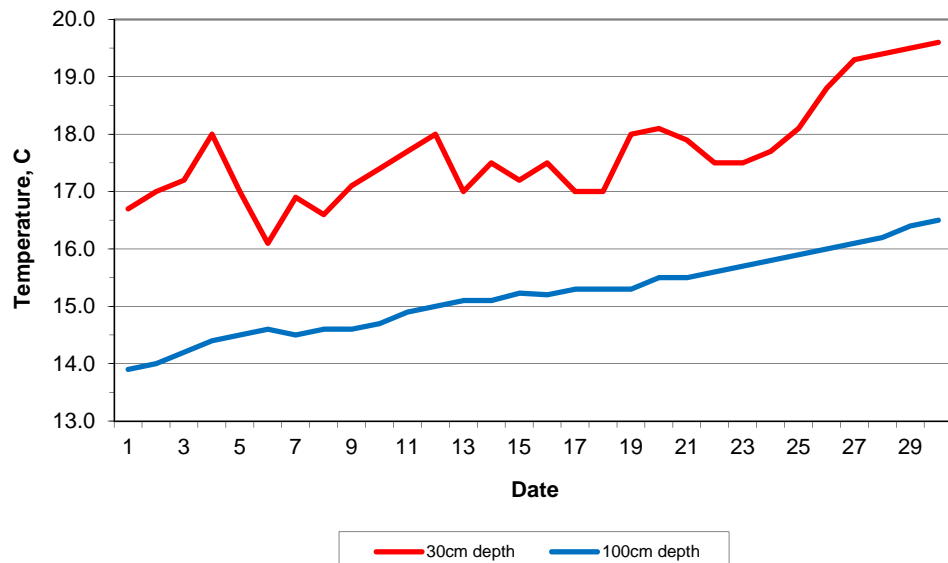
Max maximum temperature (degC) beginning 09GMT Min minimum temperature (degC) ending 09GMT
Gmin grass minimum temperature (degC) ending 09GMT Rain precipitation beginning 09GMT
Sun sunshine (hours) sunrise-sunset Rain hrs hours of rainfall (>0.1mm/h) 09-09GMT
Fr. Hrs hours of air frost (00-24GMT) Pch Evap Piche evaporation (ml) beginning 09GMT

Days with

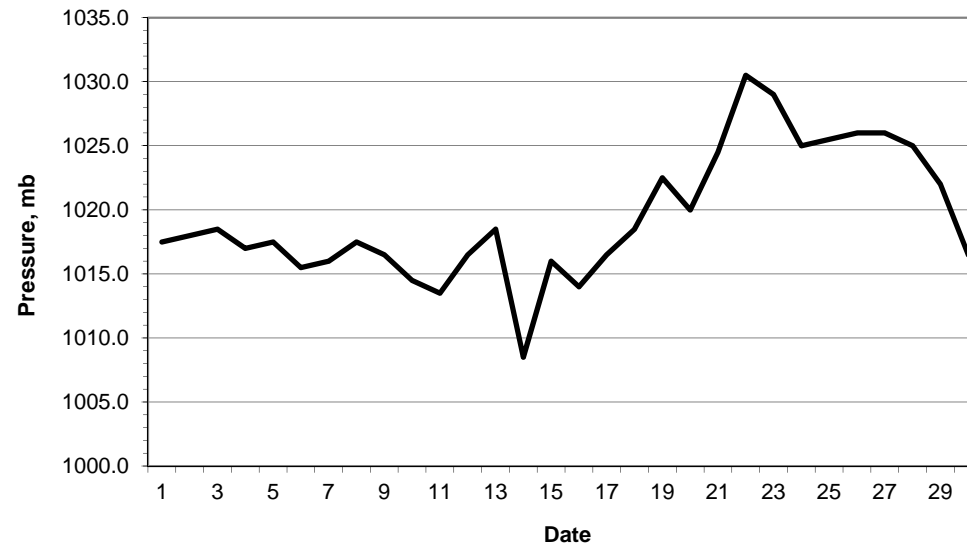
S snow(5) or sleet(1) falling L 50% snow cover at 09GMT H hail or ice pellets
T thunder heard G gale F fog at 09GMT

This information (and data for earlier months) is also available at <http://www.met.rdg.ac.uk/~brugge>

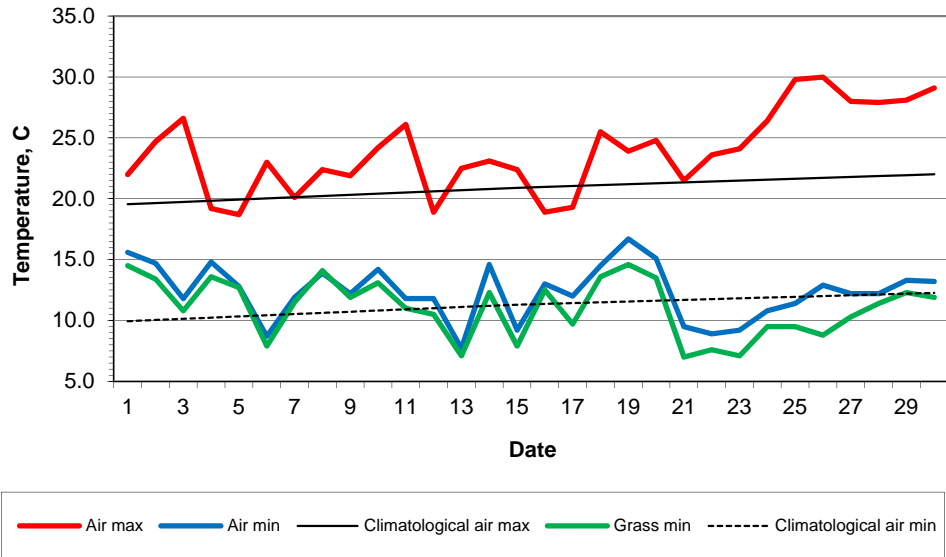
Daily soil temperatures, 0700GMT



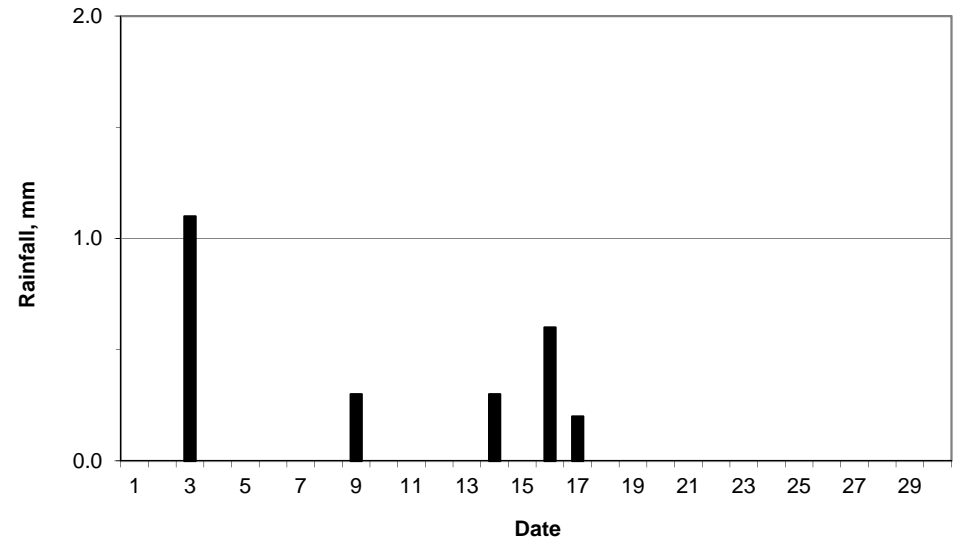
Mean sea level pressure, 0900GMT



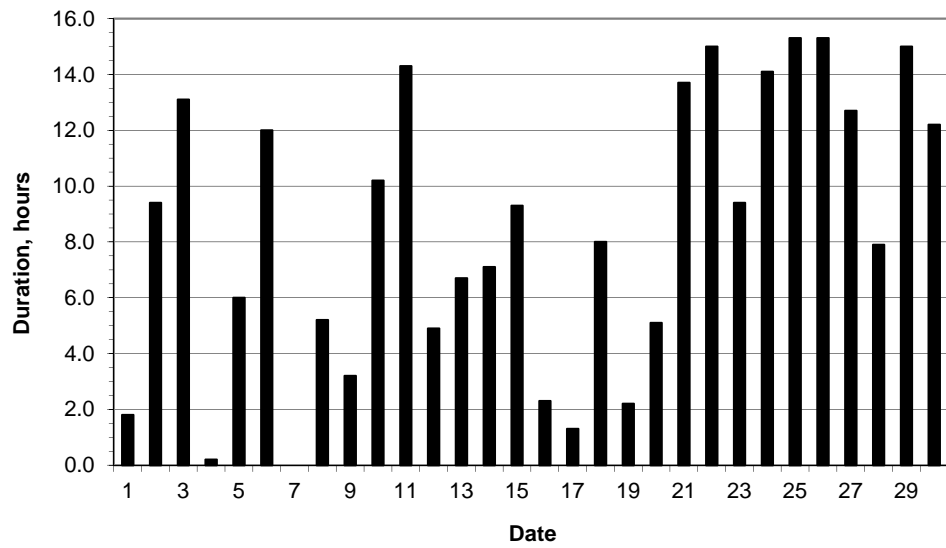
Daily temperature extremes



Daily rainfall



Daily sunshine



Daily evaporation

