

MAIDENHEAD METEOROLOGICAL OBSERVATIONS FOR JUNE 2014

| DD  | N | dd | ff | ww | VV | 0900GMT |      | Temperature |      |      |      | Soil temperatures (depth in cm) |      |      |      |      |    | E | SS   | Rain | Sun   | S | L | H | T | G | F      | Press  | Rain<br>hrs | Fr.<br>hrs | Pch<br>Evap               |                        |                           |
|---|---|----|----|----|----|---------|------|-------------|------|------|------|---------------------------------|------|------|------|------|----|---|------|------|-------|---|---|---|---|---|--------|--------|-------------|------------|---------------------------|------------------------|---------------------------|
|   |   |    |    |    |    | Temp    | RH   | Max         | Min  | Gmin | 5    | 10                              | 20   | 30   | 50   | 100  |    |   |      |      |       |   |   |   |   |   |        |        |             |            |                           |                        |                           |
| 01  | 4 | 32 | 02 | 02 | 97 | 19.2    | 58   | 22.8        | 8.6  | 6.9  | 13.8 | 13.5                            | 14.0 | 14.3 | 13.4 | 12.6 | 10 | 0 | 0.3  | 7.2  | 0     | 0 | 0 | 0 | 0 | 0 | 0      | 1022.5 | 1.0         | 0.0        | 2.3                       | Number of              |                           |
| 02  | 6 | 27 | 05 | 02 | 97 | 17.3    | 76   | 20.1        | 13.0 | 12.1 | 15.1 | 15.2                            | 15.4 | 15.1 | 13.8 | 12.9 | 10 | 0 | 0.9  | 3.0  | 0     | 0 | 0 | 0 | 0 | 0 | 1019.0 | 1.2    | 0.0         | 1.7        | days with                 |                        |                           |
| 03  | 8 | 00 | 00 | 53 | 94 | 14.5    | 94   | 20.4        | 12.5 | 10.7 | 15.2 | 15.3                            | 15.7 | 15.4 | 14.2 | 12.9 | 10 | 0 | 6.9  | 3.3  | 0     | 0 | 0 | 0 | 0 | 0 | 1013.0 | 4.3    | 0.0         | 1.4        | 2014 normal               |                        |                           |
| 04  | 8 | 22 | 02 | 60 | 96 | 13.2    | 87   | 20.4        | 11.3 | 11.2 | 14.6 | 14.7                            | 15.4 | 15.5 | 14.3 | 13.1 | 10 | 0 | 1.9  | 3.6  | 0     | 0 | 0 | 0 | 0 | 0 | 1003.5 | 3.9    | 0.0         | 1.0        | Snow/sleet falling        |                        |                           |
| 05  | 1 | 27 | 05 | 02 | 97 | 16.0    | 70   | 20.5        | 8.6  | 7.0  | 13.1 | 13.4                            | 14.1 | 14.8 | 14.2 | 13.1 | 10 | 0 | 0.0  | 11.4 | 0     | 0 | 0 | 0 | 0 | 0 | 1010.0 | 0.0    | 0.0         | 2.5        | 0 0.0                     |                        |                           |
| 06  | 7 | 09 | 02 | 02 | 97 | 18.0    | 59   | 24.3        | 6.6  | 5.6  | 12.9 | 13.3                            | 14.3 | 15.2 | 14.3 | 13.2 | 10 | 0 | 4.1  | 10.4 | 0     | 0 | 0 | 0 | 0 | 0 | 1014.0 | 1.9    | 0.0         | 3.8        | 50% snow cover 09GMT      |                        |                           |
| 07  | 8 | 04 | 05 | 95 | 94 | 16.1    | 94   | 23.1        | 14.7 | 12.4 | 15.6 | 15.6                            | 15.7 | 15.6 | 14.5 | 13.3 | 10 | 0 | 0.0  | 7.5  | 0     | 0 | 0 | 1 | 0 | 0 | 1010.5 | 0.0    | 0.0         | 2.9        | 0 0.0                     |                        |                           |
| 08  | 1 | 09 | 05 | 02 | 97 | 21.8    | 57   | 25.0        | 12.5 | 10.9 | 16.1 | 15.6                            | 15.8 | 16.1 | 14.8 | 13.4 | 10 | 0 | 0.0  | 13.1 | 0     | 0 | 0 | 0 | 0 | 0 | 1018.0 | 0.0    | 0.0         | 3.3        | Hail or ice pellets       |                        |                           |
| 09  | 7 | 09 | 02 | 02 | 97 | 19.8    | 79   | 26.5        | 14.4 | 11.9 | 16.0 | 16.3                            | 17.8 | 16.9 | 15.2 | 13.5 | 10 | 0 | 0.8  | 6.0  | 0     | 0 | 0 | 0 | 0 | 0 | 1015.0 | 0.5    | 0.0         | 2.2        | 0 0.0                     |                        |                           |
| 10  | 1 | 18 | 02 | 02 | 97 | 20.2    | 58   | 23.0        | 11.8 | 10.4 | 15.6 | 16.3                            | 17.2 | 17.1 | 15.7 | 13.7 | 10 | 0 | 0.0  | 12.9 | 0     | 0 | 0 | 0 | 0 | 0 | 1016.0 | 0.0    | 0.0         | 3.3        | Thunder                   |                        |                           |
| 11  | 2 | 18 | 02 | 02 | 97 | 18.5    | 68   | 23.3        | 10.7 | 9.9  | 14.9 | 15.6                            | 16.7 | 17.2 | 15.9 | 13.9 | 00 | 0 | 0.0  | 9.9  | 0     | 0 | 0 | 0 | 0 | 0 | 1025.0 | 0.0    | 0.0         | 2.2        | 4 2.1                     |                        |                           |
| 12  | 4 | 18 | 02 | 02 | 97 | 21.3    | 61   | 26.4        | 9.7  | 9.6  | 15.0 | 15.6                            | 16.8 | 17.2 | 15.9 | 14.1 | 00 | 0 | 0.0  | 13.7 | 0     | 0 | 0 | 0 | 0 | 0 | 1028.0 | 0.0    | 0.0         | 3.3        | Gale                      |                        |                           |
| 13  | 1 | 18 | 00 | 02 | 97 | 23.2    | 58   | 27.2        | 11.7 | 10.6 | 16.1 | 16.7                            | 17.8 | 17.7 | 16.2 | 14.2 | 00 | 0 | 21.6 | 11.5 | 0     | 0 | 0 | 1 | 0 | 0 | 1025.0 | 4.0    | 0.0         | 3.5        | 0 0.0                     |                        |                           |
| 14  | 6 | 36 | 05 | 02 | 97 | 19.3    | 84   | 22.8        | 15.3 | 15.0 | 18.4 | 18.3                            | 18.5 | 18.1 | 16.7 | 14.4 | 10 | 0 | 2.5  | 9.0  | 0     | 0 | 0 | 1 | 0 | 0 | 1024.0 | 0.3    | 0.0         | 1.8        | Fog at 09GMT              |                        |                           |
| 15  | 8 | 36 | 05 | 02 | 97 | 15.7    | 83   | 19.1        | 13.8 | 12.5 | 15.3 | 15.4                            | 17.1 | 17.4 | 16.4 | 14.5 | 10 | 0 | 0.0  | 0.5  | 0     | 0 | 0 | 0 | 0 | 0 | 1027.5 | 0.0    | 0.0         | 1.8        | 0 0.0                     |                        |                           |
| 16  | 4 | 04 | 05 | 03 | 97 | 16.1    | 70   | 18.6        | 11.5 | 9.9  | 14.7 | 15.4                            | 16.9 | 17.0 | 16.2 | 14.8 | 10 | 0 | 0.0  | 2.2  | 0     | 0 | 0 | 0 | 0 | 0 | 1027.5 | 0.0    | 0.0         | 2.7        | Air frost                 |                        |                           |
| 17  | 7 | 36 | 05 | 01 | 97 | 16.0    | 67   | 22.2        | 13.1 | 10.6 | 14.9 | 15.1                            | 16.0 | 16.4 | 15.8 | 14.7 | 10 | 0 | tr   | 9.8  | 0     | 0 | 0 | 0 | 0 | 0 | 1027.5 | 0.0    | 0.0         | 3.5        | 0 0.0                     |                        |                           |
| 18  | 8 | 04 | 09 | 60 | 97 | 17.5    | 81   | 23.4        | 14.5 | 13.8 | 16.2 | 16.5                            | 16.9 | 16.9 | 15.8 | 14.6 | 10 | 0 | tr   | 9.6  | 0     | 0 | 0 | 0 | 0 | 0 | 1027.0 | 0.0    | 0.0         | 2.9        | Ground frost              |                        |                           |
| 19  | 1 | 22 | 02 | 02 | 97 | 18.3    | 77   | 21.4        | 11.2 | 11.0 | 15.3 | 15.6                            | 16.5 | 17.0 | 15.8 | 14.7 | 10 | 0 | 0.0  | 6.9  | 0     | 0 | 0 | 0 | 0 | 0 | 1022.0 | 0.0    | 0.0         | 1.5        | 0 0.0                     |                        |                           |
| 20  | 8 | 04 | 02 | 02 | 97 | 16.7    | 69   | 24.7        | 11.2 | 9.1  | 15.5 | 15.7                            | 16.4 | 16.5 | 15.9 | 14.7 | 10 | 0 | 0.0  | 7.5  | 0     | 0 | 0 | 0 | 0 | 0 | 1023.0 | 0.0    | 0.0         | 3.0        | 0.2mm precipitation       |                        |                           |
| 21  | 2 | 27 | 02 | 02 | 97 | 20.2    | 66   | 24.8        | 12.1 | 12.0 | 15.0 | 15.5                            | 16.1 | 16.7 | 16.1 | 14.8 | 10 | 0 | 0.0  | 14.0 | 0     | 0 | 0 | 0 | 0 | 0 | 1020.0 | 0.0    | 0.0         | 2.8        | 11 11.0                   |                        |                           |
| 22  | 4 | 09 | 02 | 02 | 97 | 20.7    | 67   | 25.2        | 11.9 | 10.8 | 15.0 | 15.4                            | 15.9 | 17.0 | 16.3 | 14.8 | 00 | 0 | 0.0  | 9.0  | 0     | 0 | 0 | 0 | 0 | 0 | 1020.5 | 0.0    | 0.0         | 3.1        | 1.0mm precipitation       |                        |                           |
| 23  | 7 | 09 | 02 | 02 | 97 | 19.5    | 63   | 26.9        | 14.0 | 11.7 | 17.7 | 17.8                            | 18.4 | 17.8 | 16.5 | 14.9 | 00 | 0 | tr   | 6.1  | 0     | 0 | 0 | 0 | 0 | 0 | 1022.5 | 0.0    | 0.0         | 3.0        | 8 8.3                     |                        |                           |
| 24  | 8 | 31 | 02 | 02 | 95 | 20.9    | 70   | 25.6        | 13.9 | 11.5 | 18.3 | 18.4                            | 18.9 | 18.3 | 16.7 | 15.1 | 00 | 0 | 0.0  | 9.3  | 0     | 0 | 0 | 0 | 0 | 0 | 1019.0 | 0.0    | 0.0         | 3.2        | 5.0mm precipitation       |                        |                           |
| 25  | 1 | 04 | 05 | 02 | 97 | 17.8    | 55   | 22.0        | 10.9 | 8.9  | 15.8 | 16.8                            | 18.1 | 18.1 | 17.0 | 15.2 | 00 | 0 | 0.0  | 12.2 | 0     | 0 | 0 | 0 | 0 | 0 | 1018.0 | 0.0    | 0.0         | 4.0        | 3 4.2                     |                        |                           |
| 26  | 7 | 04 | 02 | 02 | 97 | 18.2    | 55   | 22.1        | 10.2 | 8.0  | 16.7 | 16.8                            | 17.6 | 17.8 | 16.8 | 15.3 | 90 | 0 | 2.7  | 1.9  | 0     | 0 | 0 | 0 | 0 | 0 | 1015.0 | 2.6    | 0.0         | 1.9        | No sunshine               |                        |                           |
| 27  | 8 | 13 | 02 | 02 | 97 | 17.8    | 78   | 21.8        | 13.6 | 11.4 | 17.2 | 17.3                            | 17.9 | 17.6 | 16.6 | 15.4 | 10 | 0 | 2.8  | 3.9  | 0     | 0 | 0 | 0 | 0 | 0 | 1012.0 | 0.3    | 0.0         | 3.1        | 0 1.6                     |                        |                           |
| 28  | 5 | 22 | 02 | 02 | 97 | 17.9    | 73   | 18.4        | 11.2 | 9.2  | 16.4 | 16.6                            | 17.0 | 17.4 | 16.5 | 15.4 | 10 | 0 | 7.1  | 5.4  | 0     | 0 | 0 | 1 | 0 | 0 | 1000.0 | 4.1    | 0.0         | 0.9        | June was warmer, wetter   |                        |                           |
| 29  | 7 | 36 | 09 | 02 | 97 | 16.8    | 74   | 20.5        | 11.8 | 11.2 | 17.1 | 16.7                            | 16.6 | 16.9 | 16.4 | 15.4 | 10 | 0 | 0.0  | 7.4  | 0     | 0 | 0 | 0 | 0 | 0 | 1012.0 | 0.0    | 0.0         | 2.2        | and sunnier than average. |                        |                           |
| 30  | 4 | 04 | 02 | 02 | 97 | 17.9    | 64   | 21.1        | 8.5  | 7.0  | 14.4 | 14.8                            | 16.1 | 17.0 | 16.3 | 15.4 | 10 | 0 | tr   | 5.3  | 0     | 0 | 0 | 0 | 0 | 0 | 1016.5 | 0.0    | 0.0         | 2.3        | There were four days with |                        |                           |
| Monthly means                             |   |    |    |    |    | 18.2    | 71   | 22.8        | 11.8 | 10.4 | 15.6 | 15.8                            | 16.6 | 16.7 | 15.7 | 14.3 |    |   |      |      |       |   |   |   |   |   |        | 1018.5 |             |            |                           | thunderstorm overnight |                           |
| Monthly totals                            |   |    |    |    |    |         |      |             |      |      |      |                                 |      |      |      |      |    |   |      | 51.6 | 233.5 |   |   |   |   |   |        | 24.1   | 0.0         | 77.1       | 13th-14th was memorable   |                        |                           |
| Highest values                            |   |    |    |    |    | 23.2    |      | 27.2        | 15.3 | 15.0 | 18.4 | 18.4                            | 18.9 | 18.3 | 17.0 | 15.4 |    |   | 21.6 | 14.0 |       |   |   |   |   |   |        | 4.3    | 0.0         | 4.0        | for the lightning. High   |                        |                           |
| Lowest values                             |   |    |    |    |    | 13.2    | 55   | 18.4        | 6.6  | 5.6  | 12.9 | 13.3                            | 14.0 | 14.3 | 13.4 | 12.6 |    |   |      |      |       |   |   |   |   |   |        |        |             |            |                           |                        | pressure brought a        |
| 1981-2010 monthly climatological averages |   |    |    |    |    | 72      | 20.9 | 11.3        | 9.5  | 14.9 | 15.2 | 16.1                            | 16.0 | 15.2 | 13.7 |      |    |   |      | 47.1 | 190.1 |   |   |   |   |   |        |        | 1016.7      | 33.6       | 0.0                       | 71.7                   | relatively high component |
|   |   |    |    |    |    |         |      |             |      |      |      |                                 |      |      |      |      |    |   |      |      |       |   |   |   |   |   |        |        |             |            |                           | of winds from the NE   |                           |
|   |   |    |    |    |    |         |      |             |      |      |      |                                 |      |      |      |      |    |   |      |      |       |   |   |   |   |   |        |        |             |            |                           | quadrant for the area. |                           |

Key

DD: date

07GMT observations

N cloud cover (oktas, 9=obscured)                      dd wind direction (degrees/10)  
ff wind speed (knots)  
ww present weather code  
1 cloud decreasing    60 intermittent light rain  
2 sky not changing    61 continuous slight rain  
3 cloud increasing  
5 haze

VV visibility (00-50 metres/100, 94 very poor, 95 poor, 96 moderate, 97 good)

Soil temperatures are for 0700GMT beneath bare soil (5, 10, 20cm) or grass (30, 50, 100cm)

09GMT observations

Temp temperature (degC)                                      RH relative humidity (%)  
E state of ground (00 dry, 10 moist, 20 wet, 90 cracked)      SS snow depth (cm)  
Press air pressure (mb)

24 hour readings

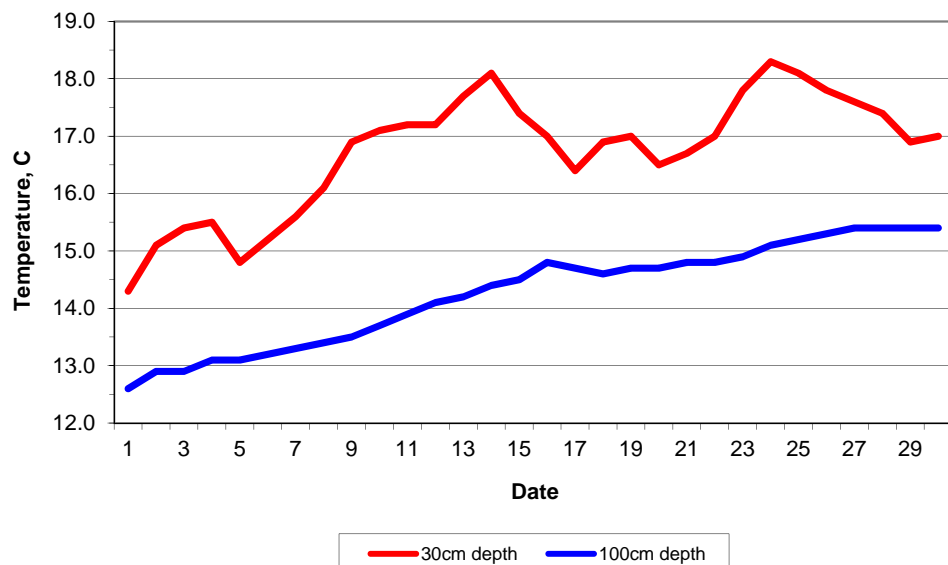
Max maximum temperature (degC) beginning 09GMT                      Min minimum temperature (degC) ending 09GMT  
Gmin grass minimum temperature (degC) ending 09GMT                      Rain precipitation beginning 09GMT  
Sun sunshine (hours) sunrise-sunset                                      Rain hrs hours of rainfall (>0.1mm/h) 09-09GMT  
Fr. Hrs hours of air frost (00-24GMT)                                      Pch Evap Piche evaporation (ml) beginning 09GMT

Days with

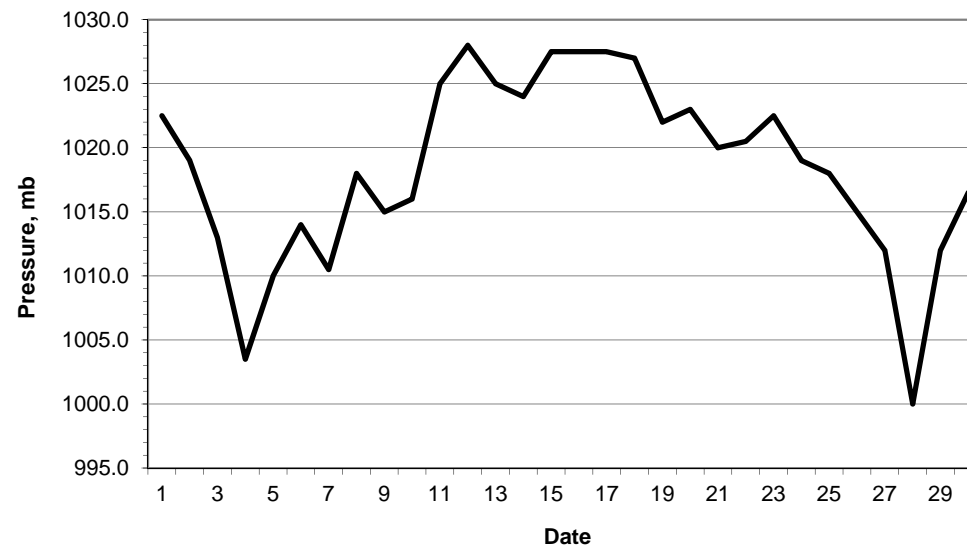
S snow(5) or sleet(1) falling                                      L 50% snow cover at 09GMT                                      H hail or ice pellets  
T thunder heard    G gale    F fog at 09GMT

This information (and data for earlier months) is also available at <http://www.met.rdg.ac.uk/~brugge>

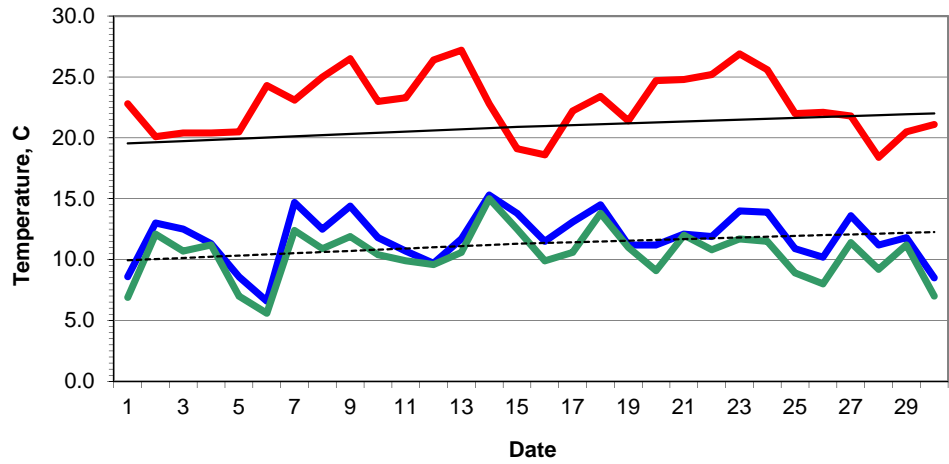
Daily soil temperatures, 0700GMT



Mean sea level pressure, 0900GMT

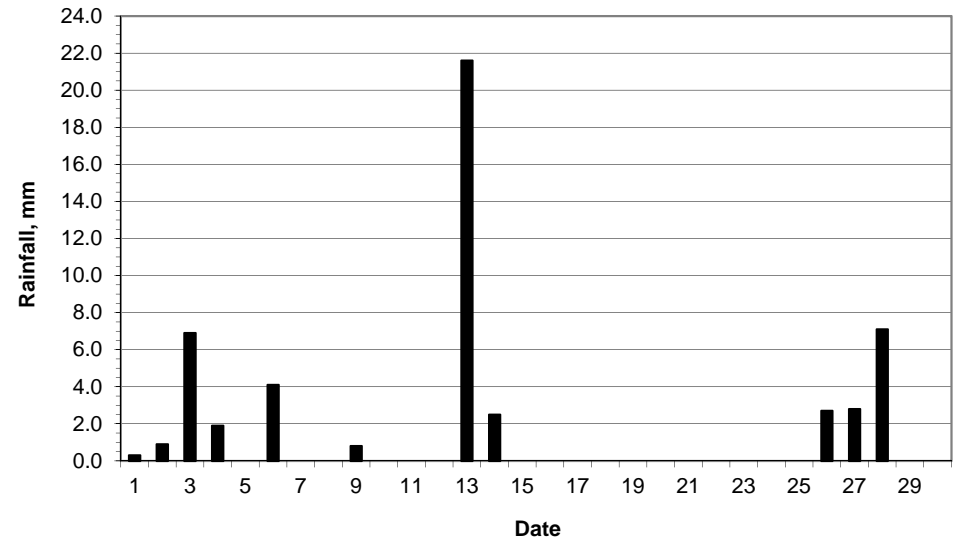


### Daily temperature extremes

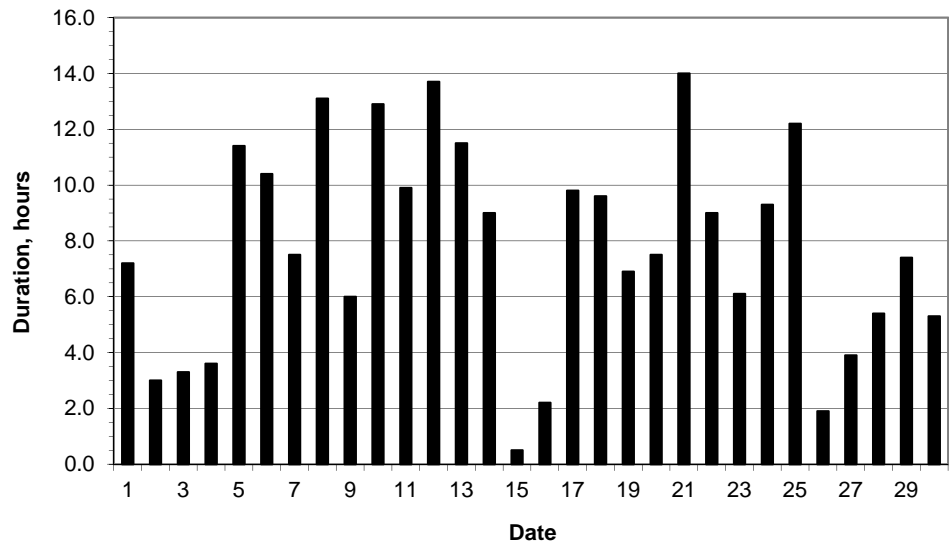


— Air max — Air min — Climatological air max — Grass min - - - - - Climatological air min

### Daily rainfall



### Daily sunshine



### Daily evaporation

