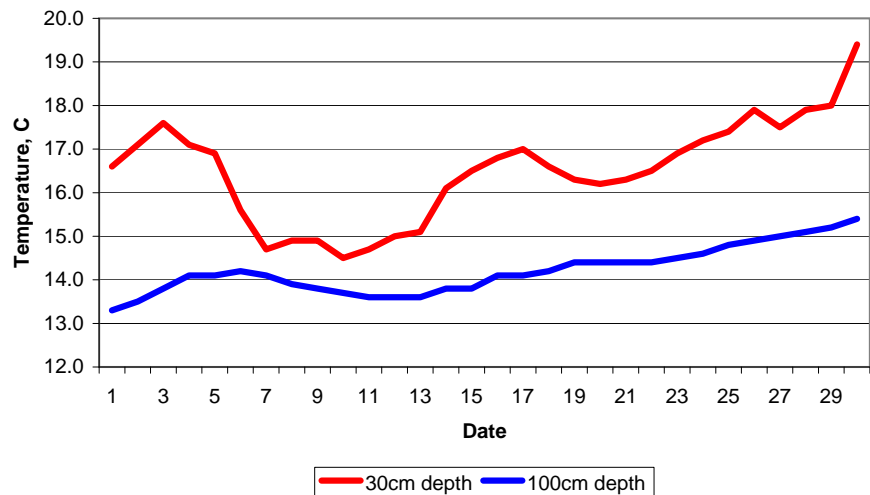


MAIDENHEAD METEOROLOGICAL OBSERVATIONS FOR JUNE 2009

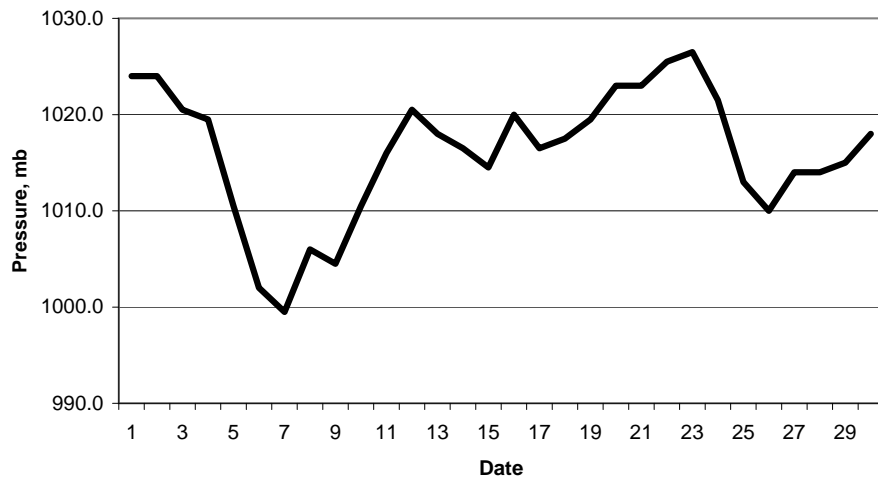
DD	N	dd	ff	ww	VV	0900GMT		Temperature		Soil temperatures (depth in cm)						E	SS	Rain	Sun	S	L	H	T	G	F	Press	Rain	Fr.	Pch			
						Temp	RH	Max	Min	Gmin	5	10	20	30	50												100	hrs	hrs		Evap	
01	1	07	05	02	97	23.4	60	26.2	12.0	9.8	15.8	16.2	17.1	16.6	15.2	13.3	00	0	0.0	14.6	0	0	0	0	0	0	1024.0	0.0	0.0	3.9	Number of days with 2009 normal Snow/sleet falling 0 0.0 50% snow cover 09GMT 0 0.0 Hail or ice pellets 0 0.1 Thunder 2 2.0 Gale 0 0.0 Air frost 0 0.0 Ground frost 0 0.0 0.2mm precipitation 9 11.5 1.0mm precipitation 6 8.9 5.0mm precipitation 2 3.5 No sunshine 3 2.3 June was dry, warm and sunny. Much of the rain fell on the 6th - which followed an unusually cold day on the 5th. The month began and ended warm, with 30C being reached on the 29th and 30th. The month was not as sunny as in May 2009 while during the final 11 days of the month there was no measurable rainfall.	
02	0	03	05	02	97	22.0	48	26.4	10.3	7.8	15.6	16.4	17.5	17.1	15.6	13.5	00	0	0.0	15.1	0	0	0	0	0	1024.0	0.0	0.0	4.3			
03	0	05	05	02	97	19.0	41	21.0	13.5	10.9	16.8	17.3	18.1	17.6	16.2	13.8	00	0	0.0	9.1	0	0	0	0	0	1020.5	0.0	0.0	2.6			
04	2	36	09	02	97	15.5	50	20.0	7.2	5.5	14.6	15.6	17.5	17.1	15.9	14.1	00	0	0.0	13.7	0	0	0	0	0	1019.5	0.0	0.0	2.9			
05	8	04	02	02	97	12.3	76	13.8	10.8	7.9	15.6	16.1	17.0	16.9	15.8	14.1	00	0	3.4	0.0	0	0	0	0	0	1010.5	4.8	0.0	1.0			
06	8	10	09	60	97	11.7	89	18.5	10.2	9.6	13.9	14.2	15.2	15.6	15.2	14.2	10	0	14.8	0.0	0	0	0	0	0	1002.0	7.7	0.0	1.5			
07	7	27	02	01	97	12.0	82	17.7	7.7	8.0	12.1	12.4	13.9	14.7	14.7	14.1	10	0	0.6	5.5	0	0	0	1	0	999.5	1.2	0.0	1.1			
08	8	04	05	02	97	12.8	81	19.0	6.8	5.8	13.1	13.4	14.3	14.9	14.4	13.9	10	0	3.3	3.0	0	0	0	0	0	1006.0	6.0	0.0	1.9			
09	8	36	05	61	96	12.0	95	16.0	11.0	10.7	13.9	13.8	14.5	14.9	14.3	13.8	10	0	0.0	0.0	0	0	0	0	0	1004.5	0.0	0.0	1.0			
10	7	03	02	02	96	14.6	83	17.8	11.7	10.9	13.9	13.9	14.4	14.5	14.4	13.7	10	0	5.4	0.7	0	0	0	0	0	1010.5	2.2	0.0	0.5			
11	7	27	09	02	97	17.3	61	20.1	10.9	9.2	13.9	13.9	14.5	14.7	14.0	13.6	10	0	0.0	10.8	0	0	0	0	0	1016.0	0.0	0.0	2.6			
12	7	23	02	03	97	15.7	55	20.3	6.2	4.8	12.8	12.8	14.4	15.0	14.3	13.6	10	0	0.0	0.4	0	0	0	0	0	1020.5	0.0	0.0	2.0			
13	7	18	05	02	97	18.5	76	24.1	14.5	11.0	15.6	15.6	15.7	15.1	14.4	13.6	10	0	0.6	7.5	0	0	0	0	0	1018.0	0.9	0.0	2.4			
14	4	27	05	02	97	21.0	64	23.5	12.6	11.2	15.8	16.0	16.6	16.1	14.9	13.8	10	0	0.0	12.1	0	0	0	0	0	1016.5	0.0	0.0	2.2			
15	8	32	02	02	97	18.1	63	25.1	11.9	11.0	15.6	15.8	16.5	16.5	15.3	13.8	10	0	1.4	7.5	0	0	0	0	0	1014.5	0.8	0.0	2.6			
16	0	27	02	02	97	20.2	57	24.2	9.7	8.5	14.9	15.5	16.7	16.8	15.4	14.1	10	0	0.0	12.5	0	0	0	0	0	1020.0	0.0	0.0	2.4			
17	8	18	02	02	97	19.6	61	22.1	10.1	8.9	16.1	16.2	17.3	17.0	15.8	14.1	00	0	0.5	0.3	0	0	0	0	0	1016.5	0.5	0.0	2.2			
18	1	24	02	02	97	18.5	51	19.5	10.1	8.5	14.8	15.4	16.6	16.6	15.7	14.2	10	0	0.0	4.5	0	0	0	0	0	1017.5	0.0	0.0	2.3			
19	1	27	09	02	97	18.7	51	20.4	8.5	7.1	14.6	14.7	16.0	16.3	15.7	14.4	00	0	1.6	7.6	0	0	0	0	0	1019.5	1.7	0.0	2.4			
20	7	29	02	02	97	17.3	75	20.8	10.3	8.1	15.2	15.5	16.3	16.2	15.4	14.4	10	0	tr	4.3	0	0	0	0	0	1023.0	0.0	0.0	1.7			
21	6	30	05	02	97	17.5	70	21.7	11.2	9.4	15.5	15.6	16.2	16.3	15.7	14.4	00	0	0.0	6.0	0	0	0	0	0	1023.0	0.0	0.0	1.8			
22	3	31	02	02	97	21.7	52	24.1	9.8	8.6	15.0	15.4	16.4	16.5	15.7	14.4	00	0	0.0	10.2	0	0	0	0	0	1025.5	0.0	0.0	2.2			
23	7	09	09	01	97	20.7	48	25.0	13.6	11.8	16.7	16.8	17.4	16.9	15.7	14.5	00	0	0.0	11.4	0	0	0	0	0	1026.5	0.0	0.0	4.0			
24	0	09	09	02	97	21.1	54	25.1	10.7	8.5	15.7	16.2	17.4	17.2	16.2	14.6	00	0	0.0	13.5	0	0	0	0	0	1021.5	0.0	0.0	3.9			
25	8	07	09	02	97	20.5	76	27.0	13.3	12.0	17.1	17.3	18.0	17.4	16.3	14.8	90	0	0.0	4.4	0	0	0	0	0	1013.0	0.0	0.0	3.1			
26	8	02	02	60	96	18.8	87	23.0	16.4	14.2	18.3	18.3	18.6	17.9	16.6	14.9	90	0	0.0	4.2	0	0	0	0	0	1010.0	0.0	0.0	2.0			
27	8	27	02	02	97	20.8	72	26.0	13.8	11.9	18.3	17.9	17.9	17.5	16.6	15.0	90	0	0.0	7.8	0	0	0	1	0	1014.0	0.0	0.0	1.7			
28	8	02	02	02	97	24.2	61	28.4	13.7	12.0	18.1	17.9	17.9	17.9	16.8	15.1	90	0	tr	6.7	0	0	0	0	0	1014.0	0.0	0.0	2.5			
29	7	09	02	02	97	25.2	50	30.9	16.6	14.0	19.4	19.4	19.4	18.0	17.2	15.2	90	0	0.0	9.9	0	0	0	0	0	1015.0	0.0	0.0	4.0			
30	6	07	05	02	97	25.6	54	30.7	16.2	13.5	19.4	19.7	20.4	19.4	17.8	15.4	90	0	0.0	8.4	0	0	0	0	0	1018.0	0.0	0.0	4.5			
Monthly means						18.5	65	22.6	11.4	9.7	15.6	15.8	16.7	16.5	15.6	14.2											1016.1					
Monthly totals																					31.6	211.7						25.8	0.0	73.2		
Highest values						25.6		30.9	16.6	14.2	19.4	19.7	20.4	19.4	17.8	15.4				14.8	15.1						7.7	0.0	4.5			
Lowest values						11.7	41	13.8	6.2	4.8	12.1	12.4	13.9	14.5	14.0	13.3																
1971-2000 monthly climatological averages						74	20.0	10.9	8.9	14.3	14.6	15.6	15.3	14.4	12.9							52.0	180.0						1016.8	36.4	0.0	72.4

Key
 DD: date
 07GMT observations
 N cloud cover (oktas, 9=obsured) dd wind direction (degrees/10)
 ff wind speed (knots)
 ww present weather code
 1 cloud decreasing 60 intermittent light rain
 2 sky not changing 61 continuous slight rain
 3 cloud increasing
 5 haze
 VV visibility (00-50 metres/100, 94 very poor, 95 poor, 96 moderate, 97 good)
 Soil temperatures are for 0700GMT beneath bare soil (5, 10, 20cm) or grass (30, 50, 100cm)
 09GMT observations
 Temp temperature (degC) RH relative humidity (%)
 E state of ground (00 dry, 10 moist, 20 wet, 90 cracked) SS snow depth (cm)
 Press air pressure (mb)
 24 hour readings
 Max maximum temperature (degC) beginning 09GMT Min minimum temperature (degC) ending 09GMT
 Gmin grass minimum temperature (degC) ending 09GMT Rain precipitation beginning 09GMT
 Sun sunshine (hours) sunrise-sunset Rain hrs hours of rainfall (>0.1mm/h) 09-09GMT
 Fr. Hrs hours of air frost (00-24GMT) Pch Evap Piche evaporation (ml) beginning 09GMT
 Days with
 S snow(5) or sleet(1) falling L 50% snow cover at 09GMT H hail or ice pellets
 T thunder heard G gale F fog at 09GMT
 This information (and data for earlier months) is also available at <http://www.met.rdg.ac.uk/~brugge>

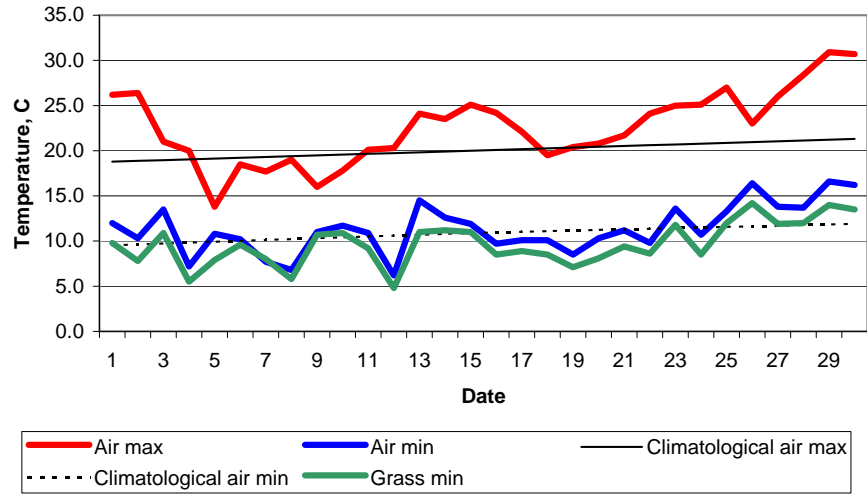
Daily soil temperatures, 0700GMT



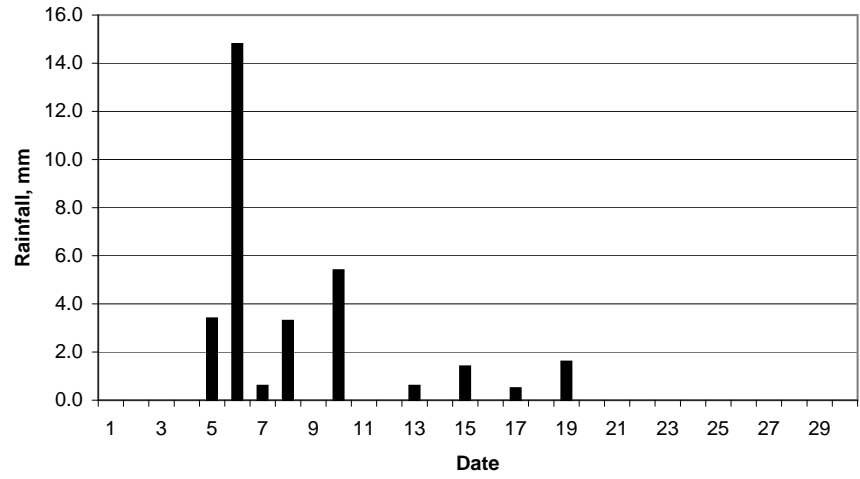
Mean sea level pressure, 0900GMT



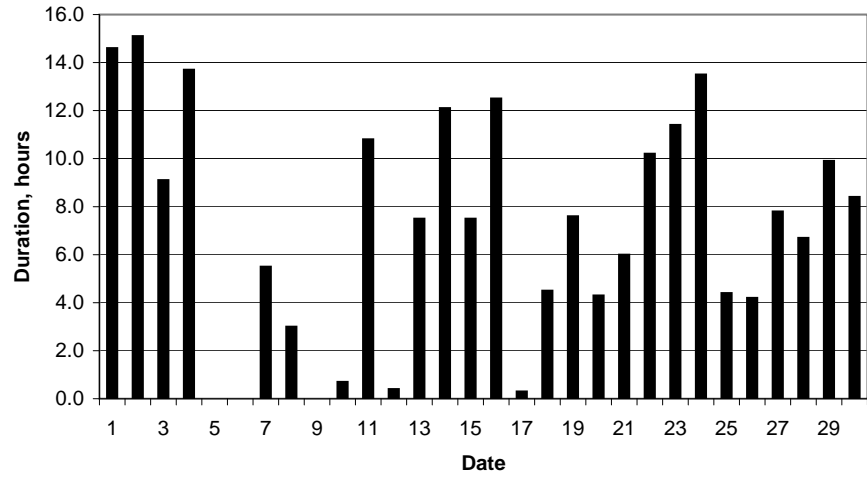
Daily temperature extremes



Daily rainfall



Daily sunshine



Daily evaporation

