

MAIDENHEAD METEOROLOGICAL OBSERVATIONS FOR JUNE 2007

DD	N	dd	ff	ww	VV	0900GMT		Temperature				Soil temperatures (depth in cm)						E	SS	Rain	Sun	S	L	H	T	G	F	Press	Rain	Fr.	Pch	
						Temp	RH	Max	Min	Gmin	5	10	20	30	50	100	hrs												hrs	Evap		
01	5	36	02	02	97	19.5	64	23.5	10.1	8.1	12.8	12.8	13.5	13.8	13.1	13.0	10	0	0.0	10.1	0	0	0	0	0	0	0	1017.5	0.0	0.0	3.5	Number of days with 2007 normal Snow/sleet falling 0 0.0 50% snow cover 09GMT 0 0.0 Hail or ice pellets 0 0.1 Thunder 4 2.0 Gale 0 0.0 Fog at 09GMT 0 0.1 Air frost 0 0.0 Ground frost 0 0.0 0.2mm precipitation 17 11.5 1.0mm precipitation 17 8.9 5.0mm precipitation 8 3.5 No sunshine 2 2.3 The highest maximum temperature was the lowest in June since 1991 and it was the dullest June since 2000. It was the wettest June since 1980 with the lowest June MSL pressure since 1997. Daily falls of 5mm or more occurred on 8 occasions with four days having thunder.
02	0	18	02	02	97	20.9	46	25.9	10.2	8.1	13.8	14.1	14.8	14.8	13.8	13.0	10	0	0.0	14.1	0	0	0	0	0	0	1025.5	0.0	0.0	3.2		
03	3	03	02	02	97	21.3	63	25.0	12.1	9.8	16.2	16.1	16.0	16.0	14.5	13.1	00	0	17.4	11.1	0	0	0	0	0	0	1023.5	3.1	0.0	2.0		
04	8	36	05	02	95	15.7	73	20.0	14.8	13.0	17.2	17.3	17.5	16.8	15.1	13.5	10	0	tr	2.5	0	0	0	0	0	0	1024.5	0.0	0.0	1.4		
05	4	36	02	02	07	15.7	74	21.9	11.3	9.0	14.2	14.9	16.0	16.1	15.2	13.7	10	0	0.0	14.1	0	0	0	0	0	0	1025.5	0.0	0.0	2.9		
06	8	03	05	02	07	13.0	77	18.9	11.6	10.9	14.9	15.4	16.2	16.6	15.4	13.9	10	0	0.0	7.5	0	0	0	0	0	0	1022.5	0.0	0.0	2.0		
07	8	03	05	02	97	14.2	87	18.1	11.9	11.0	14.9	15.2	16.0	16.0	15.3	14.0	10	0	tr	0.5	0	0	0	0	0	0	1021.0	0.0	0.0	1.2		
08	8	36	09	02	96	15.5	88	20.6	13.2	12.3	15.0	15.6	16.0	15.9	15.0	14.0	10	0	0.0	3.7	0	0	0	0	0	0	1019.5	0.0	0.0	1.4		
09	8	01	02	05	96	19.9	80	25.6	13.4	12.0	15.9	15.8	16.0	15.6	15.0	14.1	00	0	0.1	1.8	0	0	0	0	0	0	1020.0	0.2	0.0	2.3		
10	0	03	05	05	96	20.3	72	25.6	14.0	12.3	16.7	16.6	16.9	16.3	15.3	14.1	00	0	0.0	12.2	0	0	0	0	0	0	1018.0	0.0	0.0	2.3		
11	8	04	02	02	97	17.9	79	21.7	15.2	12.9	17.3	17.4	17.8	17.2	15.6	14.2	00	0	0.0	0.3	0	0	0	0	0	0	1015.5	0.0	0.0	1.3		
12	8	22	05	02	96	18.4	82	23.4	14.2	12.4	17.0	17.1	17.4	17.0	16.0	14.5	00	0	0.0	7.8	0	0	0	0	0	0	1013.5	0.0	0.0	2.0		
13	1	21	02	02	97	21.6	67	24.4	11.7	10.0	15.5	16.2	17.1	17.1	16.1	14.6	00	0	2.2	8.3	0	0	0	0	0	0	1009.5	1.6	0.0	1.5		
14	8	07	02	02	97	18.5	79	22.0	15.5	15.0	17.7	17.7	18.0	17.5	16.3	14.7	10	0	7.9	0.3	0	0	0	0	0	0	1003.5	3.3	0.0	1.7		
15	8	18	02	02	96	19.2	73	21.2	14.7	14.2	17.2	17.4	17.9	17.5	16.3	14.9	10	0	2.1	5.9	0	0	0	1	0	0	1000.0	0.8	0.0	1.8		
16	6	22	02	02	97	18.0	77	20.4	13.0	11.4	16.2	16.7	17.2	17.4	16.5	15.0	10	0	2.9	5.3	0	0	0	0	0	0	1001.5	2.8	0.0	1.4		
17	7	19	02	02	97	19.5	57	22.1	12.4	12.1	17.3	16.9	17.2	17.4	16.6	15.1	10	0	1.7	5.7	0	0	0	0	0	0	1005.0	1.0	0.0	2.1		
18	8	14	02	02	96	15.5	93	20.5	13.0	12.7	16.6	17.0	17.9	17.8	16.7	15.1	10	0	2.5	5.5	0	0	0	0	0	0	1006.0	0.5	0.0	1.5		
19	7	09	02	02	97	20.5	52	25.6	11.4	10.2	15.7	15.9	17.6	17.0	16.5	15.2	10	0	18.5	7.3	0	0	0	1	0	0	1012.5	0.7	0.0	2.8		
20	3	18	02	03	97	18.3	73	21.3	12.6	11.2	16.2	16.8	17.8	17.8	16.7	15.3	10	0	0.0	10.8	0	0	0	0	0	0	1010.0	0.0	0.0	2.6		
21	6	14	02	02	97	17.8	63	20.5	12.5	10.4	15.6	16.1	17.1	17.6	16.7	15.4	10	0	13.5	4.9	0	0	0	0	0	0	1011.0	6.5	0.0	1.7		
22	8	18	02	61	96	16.4	93	20.2	14.1	12.6	15.7	16.6	17.2	17.5	16.7	15.4	20	0	2.2	3.2	0	0	0	0	0	0	1005.5	2.0	0.0	1.2		
23	8	27	02	02	97	18.8	73	21.4	14.3	13.5	17.0	17.2	17.4	17.4	16.6	15.5	10	0	6.6	3.3	0	0	0	1	0	0	1010.0	4.0	0.0	1.3		
24	8	23	05	61	95	14.2	95	16.9	11.9	10.9	15.8	16.2	17.0	17.2	16.5	15.5	10	0	9.2	0.0	0	0	0	0	0	0	1009.5	8.4	0.0	0.5		
25	8	19	05	02	97	13.1	92	16.6	11.5	10.6	15.3	15.6	16.4	16.8	16.3	15.5	10	0	6.5	1.4	0	0	0	0	0	0	998.5	6.0	0.0	1.1		
26	4	31	05	02	97	15.7	55	16.9	11.2	10.2	13.9	14.3	15.4	16.0	16.2	15.5	10	0	0.0	5.2	0	0	0	0	0	0	1010.0	0.0	0.0	2.1		
27	8	21	02	02	97	15.4	66	18.4	9.2	7.0	13.3	13.9	15.2	15.8	15.6	15.3	10	0	4.7	2.2	0	0	0	1	0	0	1009.0	3.9	0.0	1.8		
28	7	23	05	02	97	15.0	77	19.4	7.7	5.8	13.8	14.0	15.3	15.7	15.5	15.2	10	0	2.6	5.4	0	0	0	0	0	0	1012.0	3.0	0.0	2.8		
29	8	21	05	61	96	18.9	83	22.9	13.5	12.2	15.4	15.5	16.3	16.0	15.5	15.1	10	0	3.0	8.1	0	0	0	0	0	0	1007.0	3.0	0.0	1.7		
30	8	20	02	60	97	15.6	93	18.5	12.6	11.0	16.2	16.2	16.8	16.9	15.7	15.1	10	0	9.7	0.0	0	0	0	0	0	0	1012.5	10.5	0.0	1.0		
Monthly means						17.5	75	21.3	12.5	11.1	15.7	16.0	16.6	16.6	15.7	14.6												1012.7				
Monthly totals																					113.3	168.5						61.3	0.0	56.1		
Highest values						21.6		25.9	15.5	15.0	17.7	17.7	18.0	17.8	16.7	15.5				18.5	14.1							10.5	0.0	3.5		
Lowest values						13.0	46	16.6	7.7	5.8	12.8	12.8	13.5	13.8	13.1	13.0																
1971-2000 monthly climatological averages						74	20.0	10.9	8.9	14.3	14.6	15.6	15.3	14.4	12.9							52.0	180.0						1016.8	36.4	0.0	72.4

Key

DD: date

07GMT observations

N cloud cover (oktas, 9=obscured)                      dd wind direction (degrees/10)  
ff wind speed (knots)  
ww present weather code  
1 cloud decreasing    60 intermittent light rain  
2 sky not changing    61 continuous slight rain  
3 cloud increasing  
5 haze

VV visibility (00-50 metres/100, 94 very poor, 95 poor, 96 moderate, 97 good)

Soil temperatures are for 0700GMT beneath bare soil (5, 10, 20cm) or grass (30, 50, 100cm)

09GMT observations

Temp temperature (degC)                                      RH relative humidity (%)  
E state of ground (00 dry, 10 moist, 20 wet, 90 cracked)      SS snow depth (cm)  
Press air pressure (mb)

24 hour readings

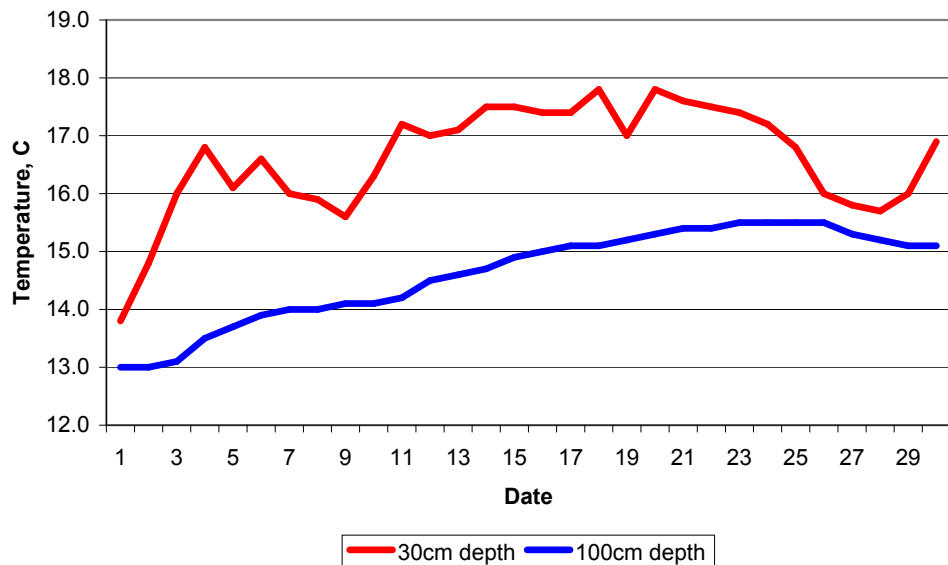
Max maximum temperature (degC) beginning 09GMT                      Min minimum temperature (degC) ending 09GMT  
Gmin grass minimum temperature (degC) ending 09GMT                      Rain precipitation beginning 09GMT  
Sun sunshine (hours) sunrise-sunset                                      Rain hrs hours of rainfall (>0.1mm/h) 09-09GMT  
Fr. Hrs hours of air frost (00-24GMT)                                      Pch Evap Piche evaporation (ml) beginning 09GMT

Days with

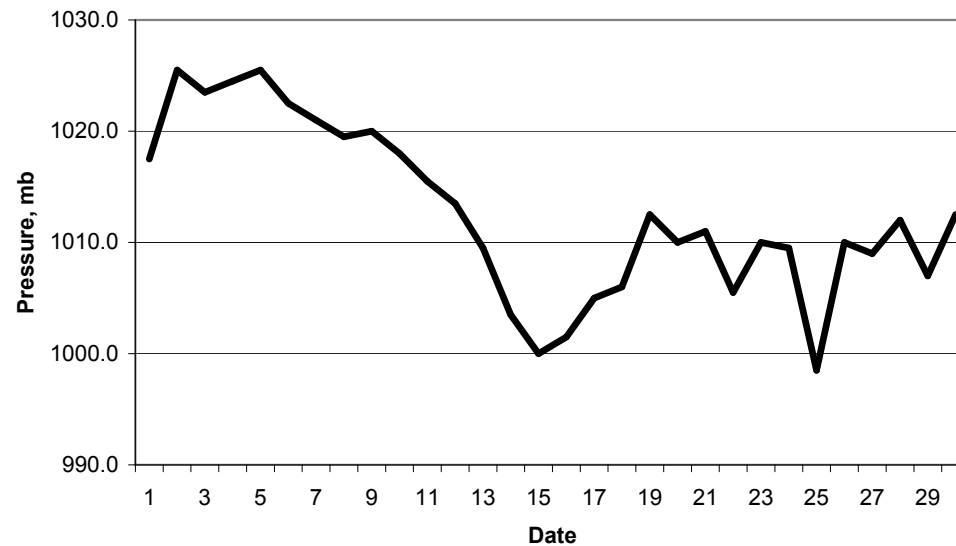
S snow(5) or sleet(1) falling                                      L 50% snow cover at 09GMT                                      H hail or ice pellets  
T thunder heard    G gale    F fog at 09GMT

This information (and data for earlier months) is also available at <http://www.met.rdg.ac.uk/~brugge>

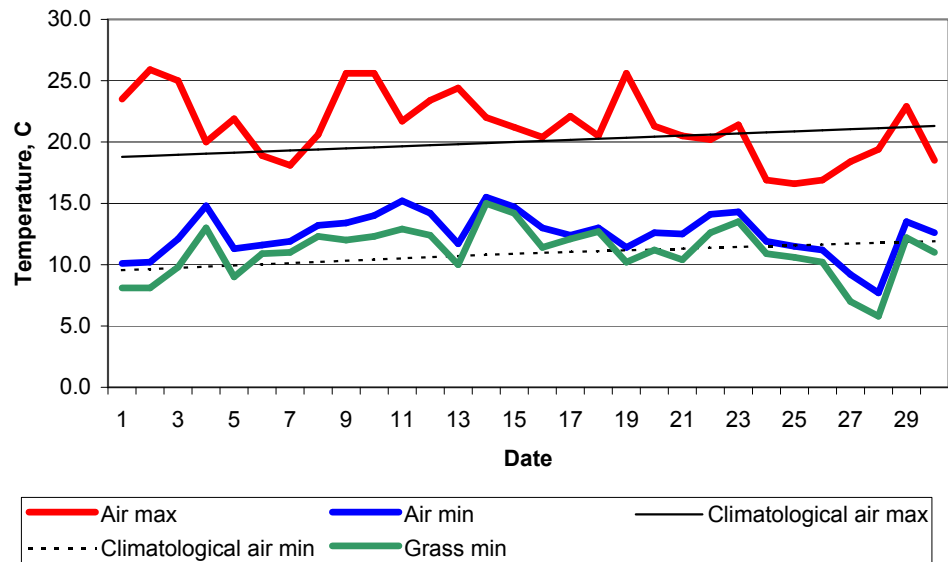
Daily soil temperatures, 0700GMT



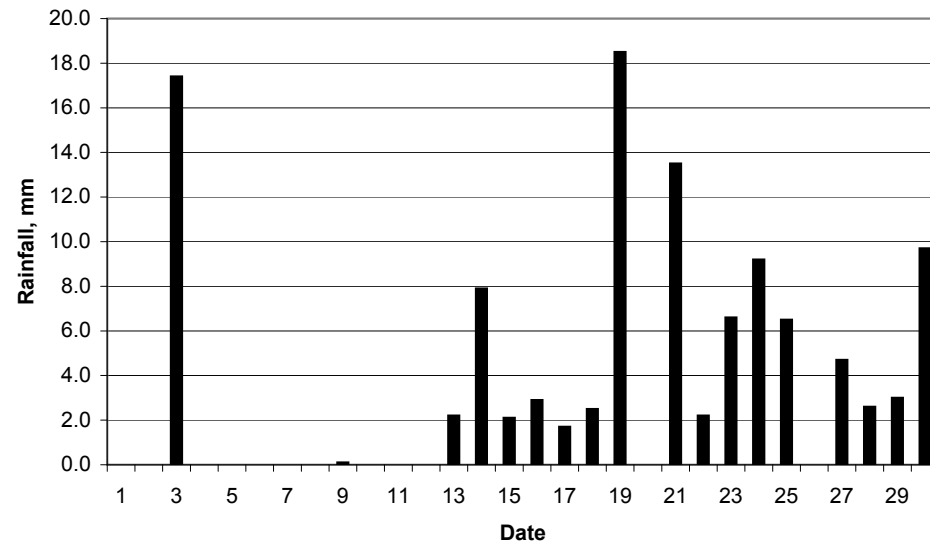
Mean sea level pressure, 0900GMT



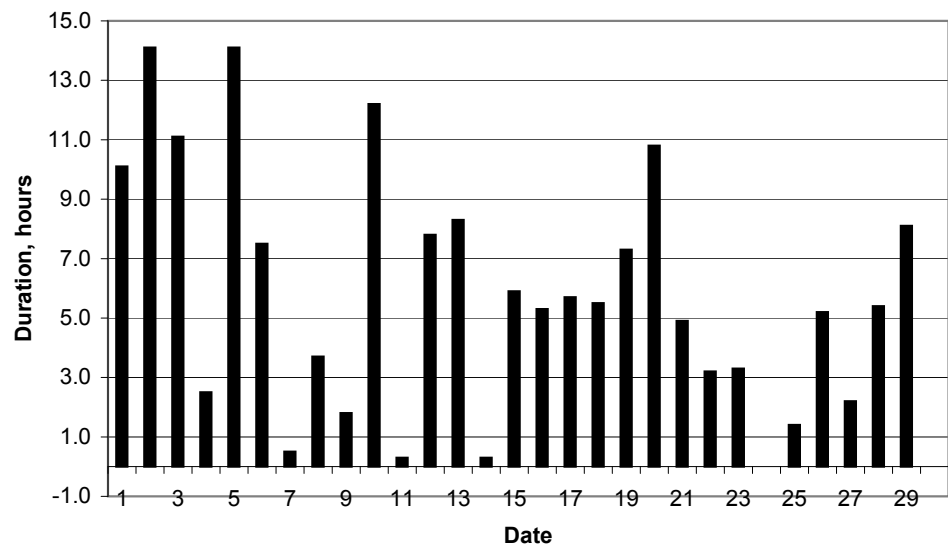
### Daily temperature extremes



### Daily rainfall



### Daily sunshine



### Daily evaporation

