

MAIDENHEAD METEOROLOGICAL OBSERVATIONS FOR JUNE 2006

DD	N	dd	ff	ww	VV	0900GMT		Temperature			Soil temperatures (depth in cm)						E	SS	Rain	Sun	S	L	H	T	G	F	Press	Rain	Fr.	Pch		
						Temp	RH	Max	Min	Gmin	5	10	20	30	50	100												hrs	hrs	Evap		
01	7	32	02	02	97	13.6	68	18.3	5.3	4.6	9.5	10.0	11.0	13.6	12.9	12.1	10	0	0.0	0.2	0	0	0	0	0	0	1027.5	0.0	0.0	1.3	Number of days with 2006 normal Snow/sleet falling 0 0.0 50% snow cover 09GMT 0 0.0 Hail or ice pellets 0 0.1 Thunder 1 2.0 Gale 0 0.0 Fog at 09GMT 0 0.1 Air frost 0 0.0 Ground frost 0 0.0 0.2mm precipitation 7 11.5 1.0mm precipitation 3 8.9 5.0mm precipitation 0 3.5 No sunshine 1 2.3 A warm month, mainly due to high daytime temperatures that inclded an early 31.8C on the 12th. A very dry and sunny month, especially sunny during the first 12 days. The ground was dry and cracking by the third week of the month.	
02	7	32	02	02	97	17.0	67	21.6	9.4	7.0	11.0	11.0	12.0	13.8	12.9	12.1	10	0	0.0	12.0	0	0	0	0	0	0	1029.5	0.0	0.0	2.2		
03	0	32	02	02	97	20.9	50	24.6	8.2	6.2	11.5	12.0	12.5	14.2	13.0	12.2	00	0	0.0	15.0	0	0	0	0	0	0	1029.0	0.0	0.0	3.1		
04	7	35	02	03	97	20.0	63	23.8	9.7	7.0	14.4	14.2	14.8	14.5	13.4	12.4	00	0	3.2	7.3	0	0	0	0	0	0	1026.5	0.7	0.0	2.2		
05	0	36	05	02	97	17.0	66	20.4	11.8	10.5	14.9	15.3	15.8	15.2	13.7	12.5	10	0	0.0	13.0	0	0	0	0	0	0	1024.0	0.0	0.0	2.5		
06	2	04	02	02	97	16.5	57	22.0	9.6	7.0	13.8	14.2	15.4	15.0	14.2	12.8	10	0	0.0	13.8	0	0	0	0	0	0	1028.0	0.0	0.0	2.7		
07	2	22	02	02	97	19.9	68	26.8	11.0	9.3	14.7	15.2	16.1	15.9	14.4	13.0	00	0	0.4	13.0	0	0	0	1	0	0	1026.5	1.0	0.0	3.0		
08	1	14	02	02	97	22.2	66	27.2	14.5	11.3	16.7	16.8	17.4	16.5	15.0	13.1	00	0	0.0	10.2	0	0	0	0	0	0	1025.0	0.0	0.0	3.0		
09	0	13	02	02	97	21.8	54	27.1	12.0	9.4	16.1	16.7	17.7	17.0	15.5	13.4	00	0	0.0	15.4	0	0	0	0	0	0	1022.0	0.0	0.0	5.5		
10	0	15	13	02	97	24.6	54	29.0	14.8	10.5	17.7	17.4	17.9	17.2	15.8	13.7	00	0	0.0	15.2	0	0	0	0	0	0	1016.5	0.0	0.0	5.7		
11	7	18	02	02	97	24.9	63	27.8	17.2	14.2	18.8	18.8	18.9	18.0	16.2	14.0	00	0	tr	9.8	0	0	0	0	0	0	1018.5	0.0	0.0	3.0		
12	7	00	00	02	97	23.6	64	31.8	17.2	14.6	19.7	19.6	19.4	18.5	16.8	14.2	00	0	0.0	8.1	0	0	0	0	0	0	1016.5	0.0	0.0	2.9		
13	8	34	05	25	97	20.5	63	25.2	16.1	13.4	19.5	19.8	20.4	19.0	17.2	14.5	00	0	0.4	3.5	0	0	0	0	0	0	1018.5	0.5	0.0	1.9		
14	8	31	05	02	97	16.0	78	18.6	14.8	14.2	18.1	18.4	19.5	18.6	17.3	14.9	00	0	0.0	2.3	0	0	0	0	0	0	1019.5	0.0	0.0	1.6		
15	4	36	05	02	97	17.5	61	21.4	10.7	8.4	15.5	16.1	17.3	17.5	16.8	15.0	00	0	0.0	9.4	0	0	0	0	0	0	1021.0	0.0	0.0	2.5		
16	0	18	02	02	97	19.2	57	24.9	10.5	9.5	15.9	16.6	17.9	17.5	16.7	15.1	00	0	0.0	13.3	0	0	0	0	0	0	1019.0	0.0	0.0	3.3		
17	5	20	02	02	97	22.9	55	28.1	12.7	11.1	18.0	18.3	18.4	18.2	17.0	15.1	90	0	0.0	14.5	0	0	0	0	0	0	1018.0	0.0	0.0	3.5		
18	6	18	09	02	97	20.9	60	25.2	14.1	11.3	20.1	19.4	19.5	18.9	17.5	15.3	90	0	tr	2.6	0	0	0	0	0	0	1012.5	0.0	0.0	3.3		
19	8	20	09	02	97	18.0	79	21.4	15.2	13.1	18.9	19.0	19.7	18.3	17.5	15.4	90	0	0.0	0.6	0	0	0	0	0	0	1008.0	0.0	0.0	2.2		
20	6	22	05	02	97	21.2	58	23.4	13.4	11.0	18.0	17.3	18.4	18.2	17.4	15.5	90	0	0.6	6.9	0	0	0	0	0	0	1013.0	0.4	0.0	3.0		
21	7	27	05	03	97	18.5	46	19.9	14.2	13.2	18.3	18.3	19.0	18.4	17.5	15.7	10	0	0.0	10.0	0	0	0	0	0	0	1009.0	0.0	0.0	3.2		
22	7	27	13	02	97	16.8	53	21.5	10.7	7.2	16.9	17.2	18.2	18.0	17.4	15.7	90	0	0.0	8.3	0	0	0	0	0	0	1011.5	0.0	0.0	3.1		
23	1	18	02	02	97	17.8	52	22.8	9.5	7.5	16.1	16.8	18.2	18.0	17.2	15.8	90	0	0.8	10.7	0	0	0	0	0	0	1017.5	2.0	0.0	3.0		
24	7	14	02	02	97	16.6	61	24.3	13.8	12.5	17.7	18.0	18.7	18.4	17.4	15.7	10	0	0.0	8.8	0	0	0	0	0	0	1015.0	0.0	0.0	3.4		
25	7	16	02	03	97	19.3	52	24.9	10.9	8.1	17.2	17.3	18.1	18.0	17.2	15.9	90	0	1.5	0.2	0	0	0	0	0	0	1012.0	3.4	0.0	2.6		
26	8	04	05	60	96	14.0	90	15.0	13.9	13.2	16.9	17.5	18.1	17.9	17.1	15.8	10	0	3.3	0.0	0	0	0	0	0	0	1014.5	5.3	0.0	0.4		
27	7	04	02	02	96	14.6	76	19.1	11.5	10.3	15.3	15.5	16.5	17.0	16.6	15.8	10	0	0.0	0.9	0	0	0	0	0	0	1019.0	0.0	0.0	1.9		
28	7	04	02	02	97	17.6	54	22.4	13.0	10.5	15.9	15.4	16.9	17.0	16.5	15.7	10	0	0.0	3.5	0	0	0	0	0	0	1020.0	0.0	0.0	3.1		
29	1	00	00	02	97	20.7	57	25.9	11.2	8.5	15.3	16.0	16.9	17.1	16.5	15.6	00	0	0.0	11.7	0	0	0	0	0	0	1021.0	0.0	0.0	3.2		
30	7	07	02	02	97	20.6	48	28.1	12.2	9.8	17.3	17.3	18.3	17.0	16.9	15.5	90	0	0.0	12.6	0	0	0	0	0	0	1022.5	0.0	0.0	4.2		
Monthly means						19.2	61	23.8	12.3	10.1	16.3	16.5	17.3	17.1	16.1	14.5												1019.4				
Monthly totals																					10.2	252.8						13.3	0.0	86.5		
Highest values						24.9		31.8	17.2	14.6	20.1	19.8	20.4	19.0	17.5	15.9				3.3	15.4							5.3	0.0	5.7		
Lowest values						13.6	46	15.0	5.3	4.6	9.5	10.0	11.0	13.6	12.9	12.1																
1971-2000 monthly climatological averages						74	20.0	10.9	8.9	14.3	14.6	15.6	15.3	14.4	12.9							52.0	180.0						1016.8	36.4	0.0	72.4

Key

DD: date

07GMT observations

N	cloud cover (oktas, 9=obscured)	dd	wind direction (degrees/10)
ff	wind speed (knots)		
ww	present weather code		
2	sky not changing	60	intermittent light rain
3	cloud increasing	95	moderate thunderstorm with rain
25	recent rain shower		
50	intermittent light drizzle		
VV	visibility (00-50 metres/100, 94 very poor, 95 poor, 96 moderate, 97 good)		

Soil temperatures are for 0700GMT beneath bare soil (5, 10, 20cm) or grass (30, 50, 100cm)

09GMT observations

Temp	temperature (degC)	RH	relative humidity (%)
E	state of ground (00 dry, 10 moist, 20 wet, 90 cracked)	SS	snow depth (cm)
Press	air pressure (mb)		

24 hour readings

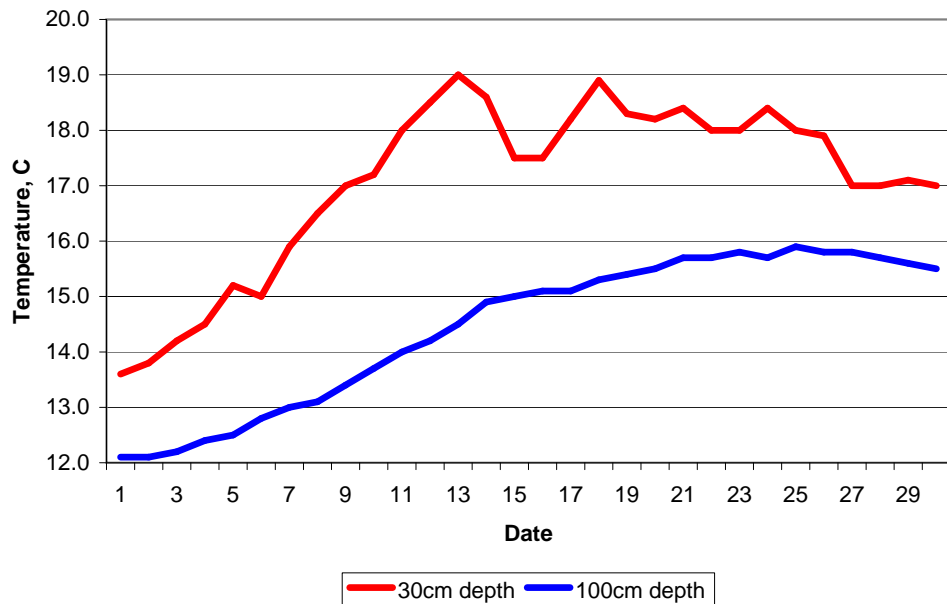
Max	maximum temperature (degC) beginning 09GMT	Min	minimum temperature (degC) ending 09GMT
Gmin	grass minimum temperature (degC) ending 09GMT	Rain	precipitation beginning 09GMT
Sun	sunshine (hours) sunrise-sunset	Rain hrs	hours of rainfall (>0.1mm/h) 09-09GMT
Fr. Hrs	hours of air frost (00-24GMT)	Pch Evap	Piche evaporation (ml) beginning 09GMT

Days with

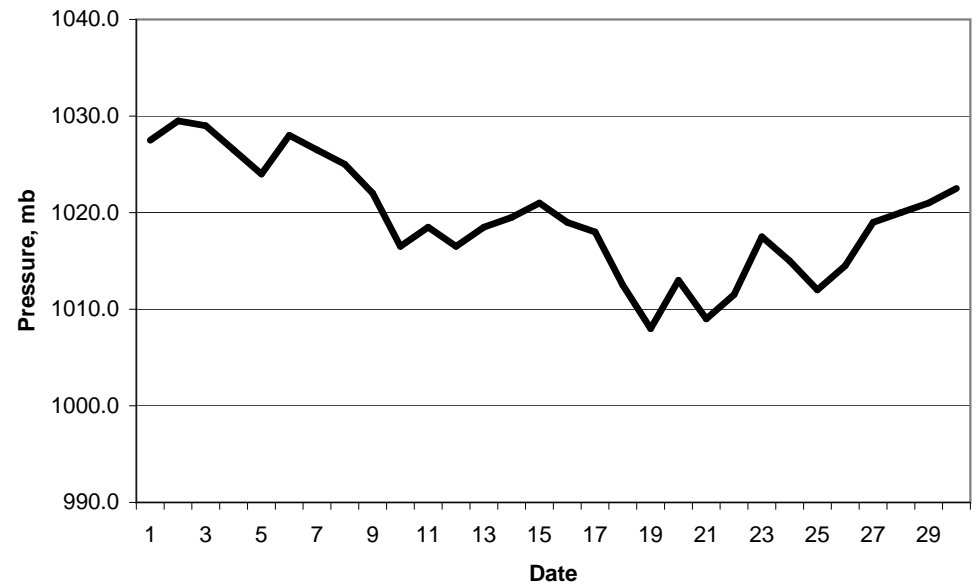
S	snow(5) or sleet(1) falling	L	50% snow cover at 09GMT	H	hail or ice pellets
T	thunder heard	G	gale	F	fog at 09GMT

This information (and data for earlier months) is also available at <http://www.met.rdg.ac.uk/~brugge>

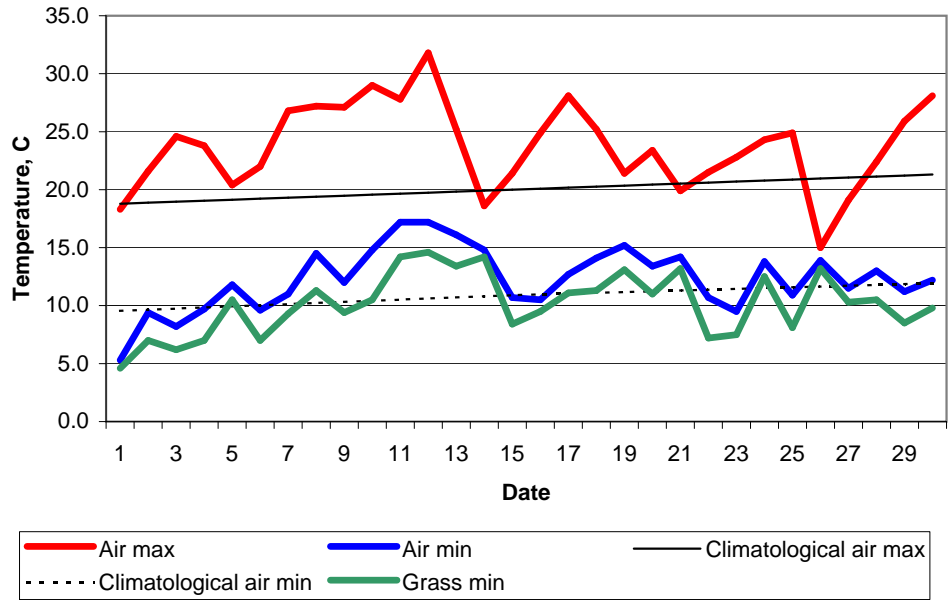
Daily soil temperatures, 0700GMT



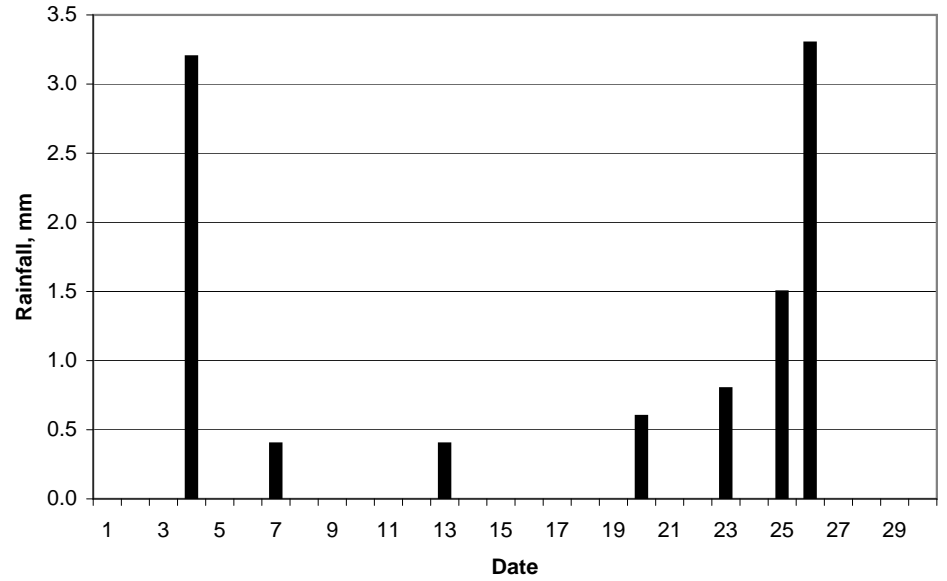
Mean sea level pressure, 0900GMT



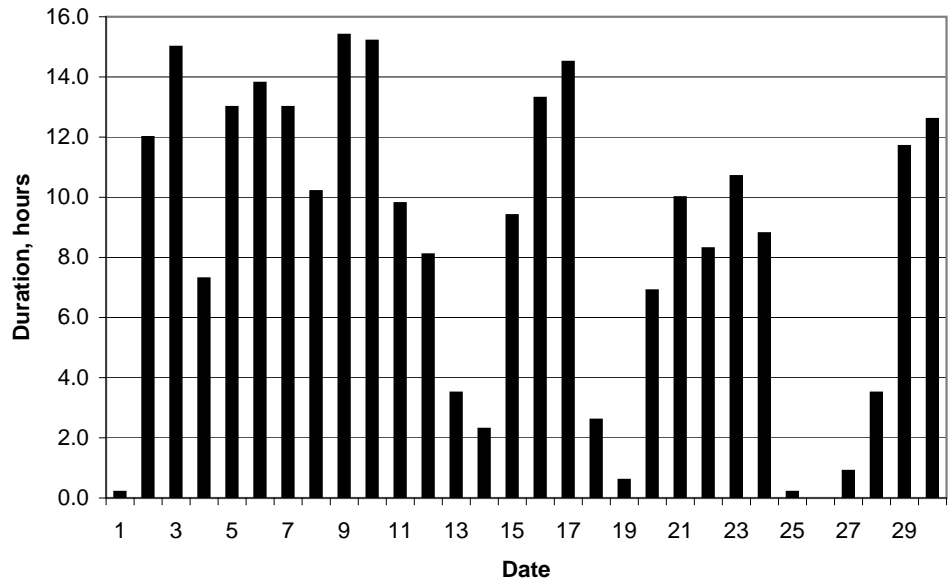
### Daily temperature extremes



### Daily rainfall



### Daily sunshine



### Daily evaporation

