

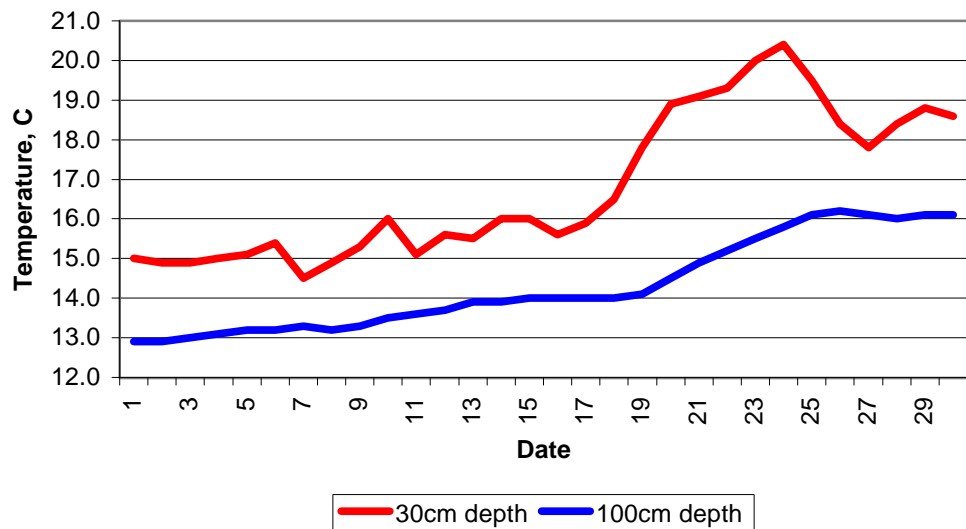
MAIDENHEAD METEOROLOGICAL OBSERVATIONS FOR JUNE 2005

DD	N	dd	ff	ww	VV	0900GMT Temp	Temperature RH	Max	Min	Gmin	Soil temperatures (depth in cm)					E	SS	Rain	Sun	S	L	H	T	G	F	Press	Rain hrs	Fr. hrs	Pch Evap															
01	8	21	02	02	97	15.0	80	16.8	9.6	7.1	13.9	14.2	15.0	15.0	14.2	12.9	00	0	1.7	0.1	0	0	0	0	0	1021.5	3.8	0.0	1.0	Number of														
02	8	22	05	02	97	16.8	86	18.5	13.9	12.0	14.2	14.5	14.6	14.9	14.1	12.9	00	0	0.0	0.0	0	0	0	0	0	1016.0	0.0	0.0	1.2	days with														
03	7	22	02	02	97	18.5	66	21.8	12.2	9.5	14.5	14.7	14.4	14.9	14.0	13.0	00	0	5.3	4.5	0	0	0	1	0	1010.0	2.4	0.0	1.7	2005 normal														
04	7	21	09	02	97	16.2	71	20.5	11.1	9.2	14.1	14.2	14.3	15.0	14.2	13.1	00	0	0.0	4.5	0	0	0	0	0	1012.0	0.0	0.0	1.8	Snow/sleet falling														
05	7	27	05	02	97	16.4	69	18.5	12.3	10.0	14.9	14.9	15.3	15.1	14.4	13.2	10	0	0.4	0.5	0	0	0	0	0	1017.5	1.5	0.0	1.4	0 0.0														
06	8	04	13	02	97	13.7	88	16.5	13.2	11.9	15.1	15.1	15.6	15.4	14.5	13.2	10	0	tr	1.1	0	0	0	0	0	1021.0	0.0	0.0	1.5	50% snow cover 09GMT														
07	0	22	05	02	97	13.6	55	18.1	4.7	2.6	11.1	11.7	13.6	14.5	14.2	13.3	10	0	0.0	15.1	0	0	0	0	0	1035.5	0.0	0.0	2.7	0 0.0														
08	1	32	05	02	97	16.6	50	21.7	6.4	4.1	12.2	12.8	14.4	14.9	14.2	13.2	00	0	0.0	15.4	0	0	0	0	0	1036.5	0.0	0.0	2.8	Hail or ice pellets														
09	0	36	02	02	97	19.6	41	23.0	7.8	5.7	13.3	13.9	15.3	15.3	14.4	13.3	00	0	0.0	9.7	0	0	0	0	0	1032.0	0.0	0.0	3.1	0 0.1														
10	7	35	05	02	97	18.6	75	19.5	16.0	10.4	16.4	16.6	16.8	16.0	15.0	13.5	00	0	0.0	1.5	0	0	0	0	0	1024.5	0.0	0.0	2.3	Thunder														
11	5	36	02	02	97	14.2	57	18.6	6.1	3.9	13.4	13.8	15.1	15.1	15.2	13.6	00	0	0.0	8.1	0	0	0	0	0	1019.0	0.0	0.0	2.3	3 2.0														
12	6	03	09	03	97	18.5	57	20.7	12.0	8.0	15.4	15.3	15.3	15.6	15.2	13.7	00	0	0.0	4.9	0	0	0	0	0	1010.0	0.0	0.0	2.1	Gale														
13	0	27	09	02	97	17.1	46	20.4	5.2	2.7	12.3	13.3	15.0	15.5	15.2	13.9	90	0	0.0	12.3	0	0	0	0	0	1008.0	0.0	0.0	3.3	0 0.0														
14	0	25	05	02	97	16.0	67	20.7	7.2	4.6	14.2	14.5	15.6	16.0	15.3	13.9	90	0	0.5	5.4	0	0	0	0	0	1009.0	2.5	0.0	2.2	Fog at 09GMT														
15	8	18	05	60	96	13.0	96	21.2	11.5	7.8	14.9	15.3	16.1	16.0	15.3	14.0	00	0	2.7	5.2	0	0	0	0	0	1014.5	0.1	0.0	1.9	0 0.1														
16	8	28	02	02	97	16.6	82	19.9	13.0	11.6	15.6	15.6	16.0	15.6	15.2	14.0	00	0	0.2	0.0	0	0	0	0	0	1020.5	0.4	0.0	1.2	Air frost														
17	8	22	02	02	97	19.9	85	26.1	16.3	15.0	17.1	16.7	16.4	15.9	15.2	14.0	10	0	0.0	4.5	0	0	0	0	0	1026.0	0.0	0.0	2.6	0 0.0														
18	0	19	02	02	97	25.9	71	29.3	14.7	13.1	16.7	16.8	17.2	16.5	15.5	14.0	00	0	0.0	15.2	0	0	0	0	0	1025.0	0.0	0.0	3.5	Ground frost														
19	1	13	05	02	97	28.1	57	31.4	17.1	15.4	18.8	18.6	18.5	17.8	16.3	14.1	00	0	0.0	13.1	0	0	0	0	0	1015.5	0.0	0.0	4.2	0 0.0														
20	8	31	09	02	97	23.3	54	27.4	19.5	16.1	20.1	20.1	20.0	18.9	17.2	14.5	90	0	0.0	9.0	0	0	0	0	0	1013.5	0.0	0.0	3.4	0.2mm precipitation														
21	4	32	05	02	97	21.4	50	26.6	13.6	10.4	18.2	18.8	20.0	19.1	17.8	14.9	90	0	0.0	14.1	0	0	0	0	0	1018.0	0.0	0.0	3.3	10 11.5														
22	1	24	02	02	97	23.4	59	28.8	13.5	10.8	18.3	18.9	20.0	19.3	18.2	15.2	90	0	0.0	15.4	0	0	0	0	0	1021.0	0.0	0.0	4.0	1.0mm precipitation														
23	1	22	02	02	97	25.3	46	31.2	14.7	12.4	18.9	19.4	20.4	20.0	18.5	15.5	90	0	0.0	10.7	0	0	0	0	0	1017.5	0.0	0.0	4.8	5 8.9														
24	6	23	02	02	97	21.6	67	23.5	15.9	13.2	20.2	20.5	21.0	20.4	18.9	15.8	90	0	6.8	3.1	0	0	0	1	0	1012.5	3.2	0.0	1.3	5.0mm precipitation														
25	8	03	09	02	95	17.2	90	19.0	17.2	16.0	19.0	19.4	20.0	19.5	18.7	16.1	10	0	0.0	0.0	0	0	0	0	0	1017.5	0.0	0.0	1.4	3 3.5														
26	8	04	02	02	97	14.3	75	20.9	12.3	11.0	15.9	16.6	18.0	18.4	18.2	16.2	10	0	0.0	7.8	0	0	0	0	0	1025.5	0.0	0.0	2.2	No sunshine														
27	3	04	02	02	97	18.4	60	25.7	11.7	10.2	15.4	16.1	17.4	17.8	17.8	16.1	00	0	0.0	15.3	0	0	0	0	0	1022.5	0.0	0.0	3.9	3 2.3														
28	7	36	05	03	97	20.1	62	27.0	14.4	12.4	17.2	17.8	18.5	18.4	18.0	16.0	90	0	7.1	7.4	0	0	0	1	0	1016.0	0.9	0.0	3.9	Close to normal														
29	8	05	05	02	96	17.0	90	24.5	14.5	13.6	17.7	18.2	19.0	18.8	18.1	16.1	10	0	0.2	6.7	0	0	0	0	0	1008.0	0.3	0.0	2.2	temperatures in the first														
30	8	18	02	50	95	17.7	92	20.0	14.7	12.5	17.3	17.8	18.7	18.6	17.8	16.1	10	0	0.7	0.8	0	0	0	0	0	1005.5	0.4	0.0	1.1	half of the month, then														
Monthly means						18.5	68	22.6	12.4	10.1	15.9	16.2	16.9	16.8	16.0	14.3											1018.4				Some very hot weather.													
Monthly totals																											15.5	0.0	74.3	Since 1976, only 2003														
Highest values						28.1	31.4	19.5	16.1	20.2	20.5	21.0	20.4	18.9	16.2													3.8	0.0	4.8	had a warmer June. The													
Lowest values						13.0	41	16.5	4.7	2.6	11.1	11.7	13.6	14.5	14.0	12.9																hottest June day since												
1971-2000 monthly climatological averages						74	20.0	10.9	8.9	14.3	14.6	15.6	15.3	14.4	12.9													1016.8	36.4	0.0	72.4	1995 and the driest June												
																																since 2000 occurred this												
																																month. Pressure on the												
																																8th was the highest in												
																																June for over 40 years.												

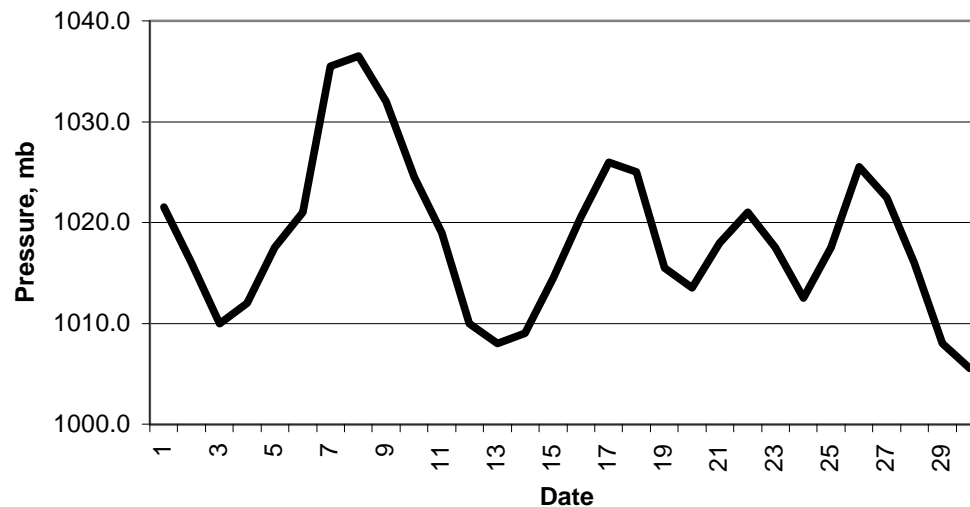
Key
 DD: date
 07GMT observations
 N cloud cover (oktas, 9=obscured) dd wind direction (degrees/10)
 ff wind speed (knots)
 ww present weather code
 2 sky not changing 60 intermittent light rain
 3 cloud increasing 95 moderate thunderstorm with rain
 50 intermittent light drizzle
 VV visibility (00-50 metres/100, 94 very poor, 95 poor, 96 moderate, 97 good)
 Soil temperatures are for 0700GMT beneath bare soil (5, 10, 20cm) or grass (30, 50, 100cm)
 09GMT observations
 Temp temperature (degC) RH relative humidity (%)
 E state of ground (00 dry, 10 moist, 20 wet, 90 cracked) SS snow depth (cm)
 Press air pressure (mb)
 24 hour readings
 Max maximum temperature (degC) beginning 09GMT Min minimum temperature (degC) ending 09GMT
 Gmin grass minimum temperature (degC) ending 09GMT Rain precipitation beginning 09GMT
 Sun sunshine (hours) sunrise-sunset Rain hrs hours of rainfall (>0.1mm/h) 09-09GMT
 Fr. Hrs hours of air frost (00-24GMT) Pch Evap Piche evaporation (ml) beginning 09GMT
 Days with
 S snow(5) or sleet(1) falling L 50% snow cover at 09GMT H hail or ice pellets
 T thunder heard G gale F fog at 09GMT

This information (and data for earlier months) is also available at <http://www.met.rdg.a.uk/~brugge>

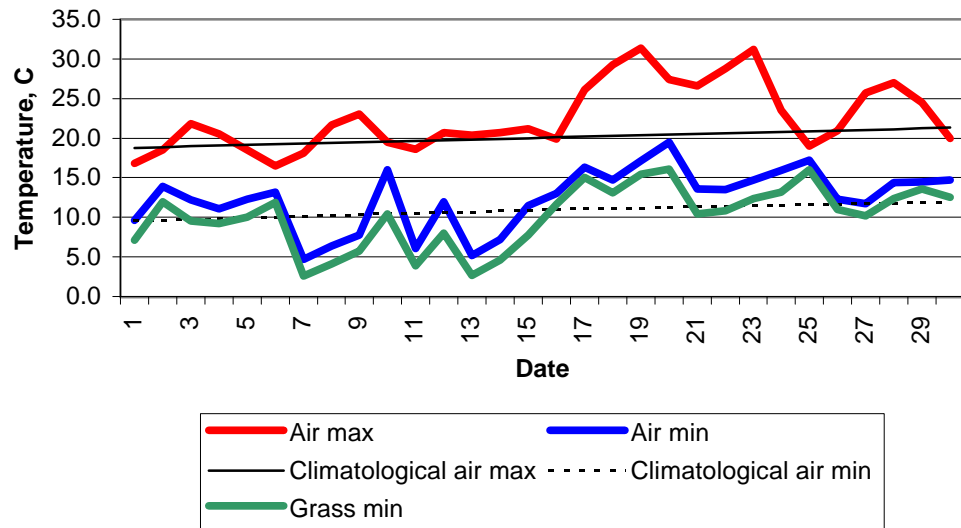
Daily soil temperatures, 0700GMT



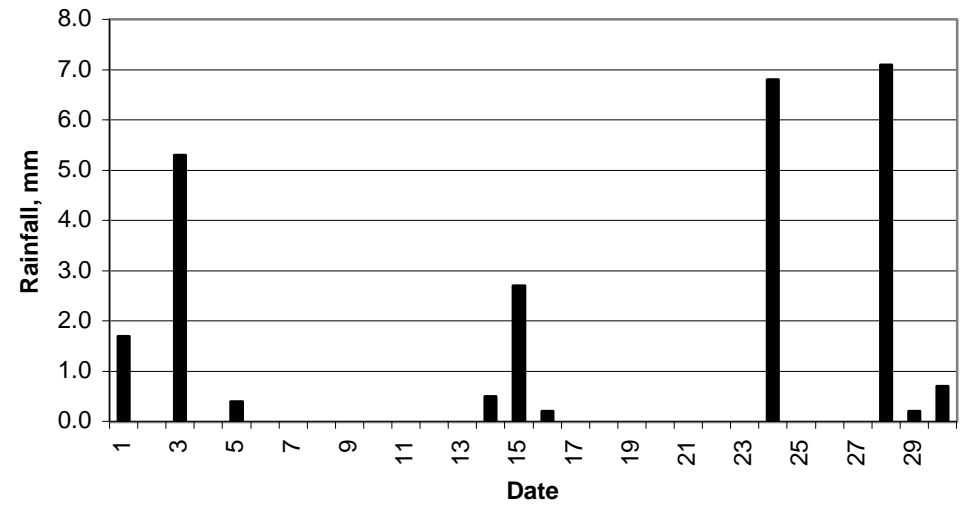
Mean sea level pressure, 0900GMT



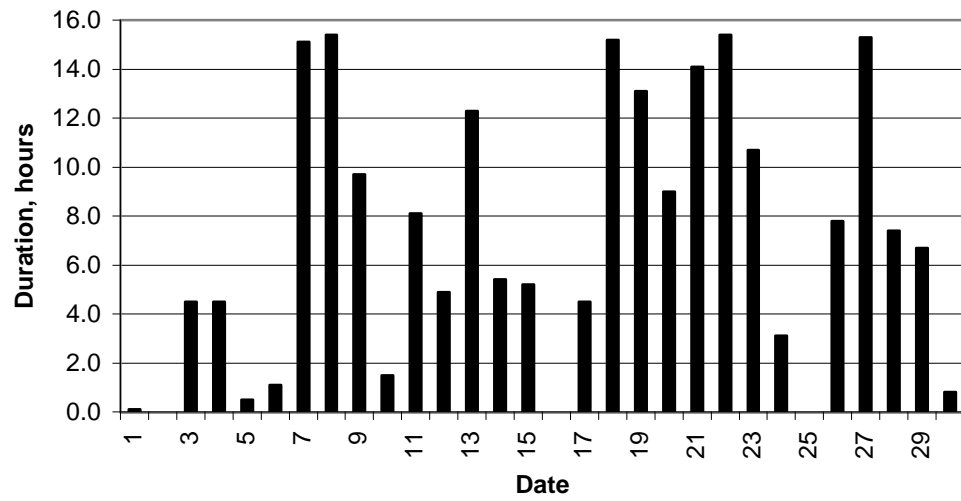
Daily temperature extremes



Daily rainfall



Daily sunshine



Daily evaporation

