

MAIDENHEAD METEOROLOGICAL OBSERVATIONS FOR JULY 2020

DD	N	dd	ff	ww	VV	0900GMT		Temperature				Soil temperatures (depth in cm)						E	SS	Rain	Sun	S	L	H	T	G	F	Press	Rain hrs	Fr. hrs	Pch Evap	
						Temp	RH	Max	Min	Gmin	5	10	20	30	50	100																
01	4	23	05	03	97	18.7	71	20.6	14.1	12.2	17.3	17.2	17.6	17.6	17.0	16.0	03	0	1.5	2.0	0	0	0	0	0	0	1005.5	1.0	0.0	1.6	Number of	
02	7	27	05	03	97	16.3	81	20.9	10.9	8.9	15.8	16.1	17.1	17.6	17.1	16.0	10	0	4.7	4.0	0	0	0	0	0	0	1010.5	1.3	0.0	1.5	days with	
03	7	27	09	02	97	17.4	69	21.0	11.0	8.6	15.3	15.6	16.9	17.4	17.0	15.9	10	0	3.7	5.5	0	0	0	0	0	0	1017.0	4.8	0.0	2.4	2020 normal	
04	8	23	09	02	97	18.7	90	20.5	14.6	14.0	17.2	17.2	17.5	17.5	16.8	15.9	10	0	0.9	0.1	0	0	0	0	0	0	1011.0	1.0	0.0	1.2	Snow/sleet falling	
05	8	23	13	02	97	18.7	66	21.5	16.4	15.0	17.3	17.5	17.7	17.6	16.8	15.9	10	0	0.0	12.3	0	0	0	0	0	0	1010.5	0.0	0.0	3.8	0 0.0	
06	2	27	13	03	97	15.9	64	20.7	11.3	9.0	14.8	15.3	16.5	17.4	17.0	16.0	10	0	tr	4.7	0	0	0	0	0	0	1018.5	0.0	0.0	2.4	50% snow cover 09GMT	
07	5	27	02	02	97	19.8	57	20.2	9.2	6.9	14.4	15.0	16.1	16.8	16.6	15.9	03	0	8.7	3.7	0	0	0	0	0	0	1020.5	11.0	0.0	1.7	0 0.0	
08	8	27	02	50	96	17.1	96	19.4	14.1	12.7	16.7	16.7	17.0	16.9	16.5	15.8	10	0	2.9	0.0	0	0	0	0	0	0	1014.5	3.3	0.0	0.5	Hail or ice pellets	
09	8	23	05	02	96	16.9	92	20.2	15.6	15.5	17.2	17.3	17.5	17.1	16.5	15.8	10	0	10.6	0.1	0	0	0	0	0	0	1012.0	3.9	0.0	0.6	0 0.1	
10	5	31	05	02	97	16.5	68	20.0	12.6	13.0	16.0	16.3	17.0	17.2	16.6	15.8	10	0	0.0	9.2	0	0	0	0	0	0	1017.5	0.0	0.0	2.5	Thunder	
11	0	31	09	02	97	18.3	55	21.5	7.6	6.0	13.7	14.0	15.8	16.9	18.8	15.9	10	0	0.0	12.8	0	0	0	0	0	0	1027.0	0.0	0.0	2.8	0 2.1	
12	4	36	02	03	97	19.0	59	24.8	7.8	7.0	14.2	14.3	15.8	16.7	16.5	15.8	10	0	0.0	14.3	0	0	0	0	0	0	1029.0	0.0	0.0	3.2	Gale	
13	7	27	02	03	97	20.2	54	24.7	11.2	9.0	16.2	16.3	17.2	17.4	16.7	15.8	03	0	0.3	4.7	0	0	0	0	0	0	1024.0	1.0	0.0	2.8	0 0.0	
14	7	36	05	01	97	19.5	71	21.8	15.8	15.6	18.0	18.3	18.5	18.0	17.0	15.8	10	0	0.0	2.0	0	0	0	0	0	0	1016.5	0.0	0.0	2.2	Fog at 09GMT	
15	8	27	05	02	97	16.5	74	19.7	12.8	11.2	17.7	17.5	17.8	17.7	17.0	15.9	00	0	tr	0.1	0	0	0	0	0	0	1015.5	0.0	0.0	1.6	0 0.0	
16	8	31	05	02	97	17.6	71	25.8	15.8	15.0	17.4	17.5	17.9	17.5	16.8	16.0	03	0	0.0	4.7	0	0	0	0	0	0	1020.0	0.0	0.0	2.4	Air frost	
17	7	31	02	02	97	23.1	63	27.9	16.3	13.1	18.3	18.3	18.5	17.9	17.0	16.0	03	0	0.0	13.0	0	0	0	0	0	0	1021.0	0.0	0.0	3.1	0 0.0	
18	8	27	05	03	97	18.4	73	25.4	14.1	11.6	18.3	18.4	18.0	18.5	17.5	16.0	03	0	1.8	6.3	0	0	0	0	0	0	1019.0	2.7	0.0	2.5	Ground frost	
19	8	05	02	50	96	15.5	91	21.2	14.3	15.0	18.2	18.4	19.1	18.6	17.6	16.1	10	0	tr	2.0	0	0	0	0	0	0	1017.0	0.0	0.0	2.3	0 0.0	
20	1	36	05	02	97	19.2	51	22.6	10.0	7.4	15.4	15.6	17.1	17.9	17.5	16.4	03	0	0.0	13.3	0	0	0	0	0	0	1023.5	0.0	0.0	3.2	0.2mm precipitator	
21	0	05	05	02	97	19.3	52	22.4	8.1	6.2	15.0	15.6	17.0	17.6	17.4	16.3	03	0	0.0	12.0	0	0	0	0	0	0	1027.0	0.0	0.0	3.2	13 11.4	
22	7	18	02	03	97	20.0	57	25.8	11.8	9.4	17.0	17.1	17.9	17.7	17.2	16.3	03	0	0.0	10.0	0	0	0	0	0	0	1025.5	0.0	0.0	3.9	1.0mm precipitator	
23	7	23	05	02	97	19.4	63	26.2	12.6	9.9	17.6	17.8	18.6	18.2	17.5	16.3	90	0	tr	4.8	0	0	0	0	0	0	1018.0	0.0	0.0	3.3	10 8.0	
24	7	23	02	02	97	21.2	66	24.8	16.0	13.8	19.3	19.2	19.4	18.6	17.7	16.4	90	0	0.2	2.3	0	0	0	0	0	0	1013.5	0.5	0.0	2.6	5.0mm precipitator	
25	7	23	05	02	97	20.7	77	23.1	17.4	16.0	19.3	19.4	19.6	18.7	17.8	16.5	90	0	16.2	0.6	0	0	0	0	0	0	1008.5	4.2	0.0	1.0	3 2.7	
26	7	23	05	02	97	17.1	92	22.5	11.3	9.3	16.1	16.3	17.4	18.0	17.6	16.6	10	0	1.7	6.1	0	0	0	0	0	0	1011.0	3.0	0.0	1.6	No sunshine	
27	8	13	05	21	97	16.3	92	20.8	15.3	14.4	17.3	17.6	18.2	18.3	17.6	16.6	10	0	2.1	0.4	0	0	0	0	0	0	1007.0	2.1	0.0	0.9	1 1.1	
28	4	27	05	02	97	18.8	61	21.3	11.1	9.6	15.3	15.6	16.9	17.8	17.5	16.6	10	0	0.0	7.3	0	0	0	0	0	0	1013.5	0.0	0.0	2.6	Sunshine total close to normal,	
29	4	27	02	02	97	19.2	62	23.6	7.8	6.7	13.8	14.2	15.8	17.1	17.1	16.6	10	0	0.0	9.4	0	0	0	0	0	0	1021.5	0.0	0.0	2.4	but a wet month due partially to	
30	0	18	02	02	97	21.4	56	28.9	12.1	10.5	15.4	15.7	17.0	17.4	17.0	16.5	10	0	0.0	13.8	0	0	0	0	0	0	1020.0	0.0	0.0	4.1	very heavy rain during the	
31	0	09	02	02	97	27.2	40	36.2	15.1	12.1	16.6	16.9	18.0	18.0	17.3	16.4	03	0	0.0	9.5	0	0	0	0	0	0	1012.0	0.0	0.0	5.7	evening of the 25th.	
Monthly means						18.8	69	23.1	12.7	11.1	16.5	16.7	17.5	17.7	17.2	16.1											1017.0				Temperatures overall were	
Monthly totals																			55.3	191.0							39.8	0.0	75.6	slightly below normal, but 36.2C		
Highest values						27.2		36.2	17.4	16.0	19.3	19.4	19.6	18.7	18.8	16.6			16.2	14.3							11.0	0.0	5.7	on the 31st was the third		
Lowest values						15.5	40	19.4	7.6	6.0	13.7	14.0	15.8	16.7	16.5	15.8																highest maximum temperature
1981-2010 monthly climatological averages						73	23.2	13.3	11.3	16.7	17.2	18.1	18.0	17.2	15.9			45.5	197.1									1016.2	31.3	0.0	76.3	of any day in the past 70 years
																															locally. 22 mornings with winds	
																															from a SW to NW direction	
																															helped to keep the average	
																															temperature down.	

Key

DD: date

07GMT observations

N	cloud cover (oktas, 9=obscured)	dd	wind direction (degrees/10)
ff	wind speed (knots)		
ww	present weather code		
1	cloud decreasing	25	recent rain shower
2	sky not changing	51	intermittent slight drizzle
3	cloud increasing	60	intermittent slight rain
21	recent rain	80	light rain shower
VV	visibility (00-50 metres/100, 94 very poor, 95 poor, 96 moderate, 97 good)		

Soil temperatures are for 0700GMT beneath bare soil (5, 10, 20cm) or grass (30, 50, 100cm)

09GMT observations

Temp	temperature (degC)	RH	relative humidity (%)
E	state of ground (00 dry, 10 moist, 20 wet, 90 cracked)	SS	snow depth (cm)
Press	air pressure (mb)		

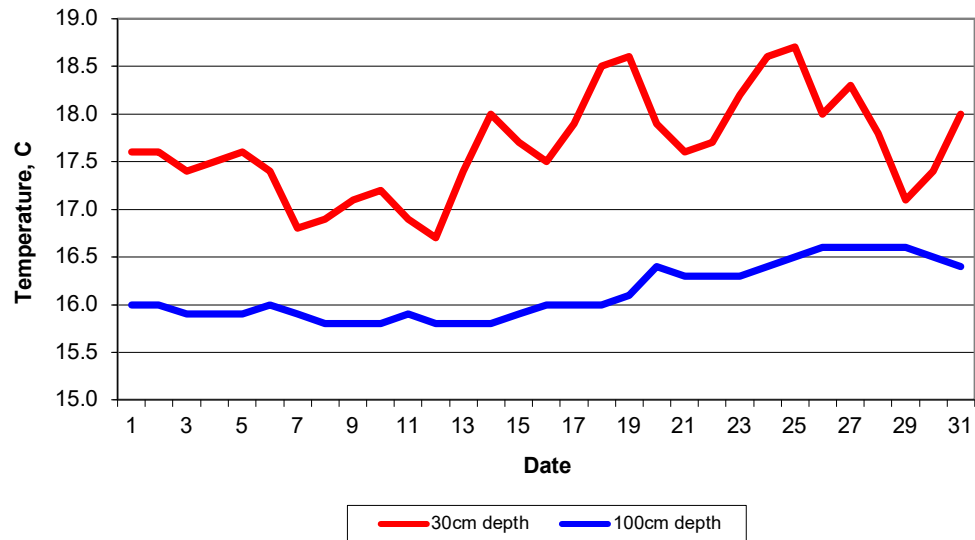
24 hour readings

Max	maximum temperature (degC) beginning 09GMT	Min	minimum temperature (degC) ending 09GMT
Gmin	grass minimum temperature (degC) ending 09GMT	Rain	precipitation beginning 09GMT
Sun	sunshine (hours) sunrise-sunset	Rain hrs	hours of rainfall (>0.1mm/h) 09-09GMT
Fr. Hrs	hours of air frost (00-24GMT)	Pch Evap	Piche evaporation (ml) beginning 09GMT

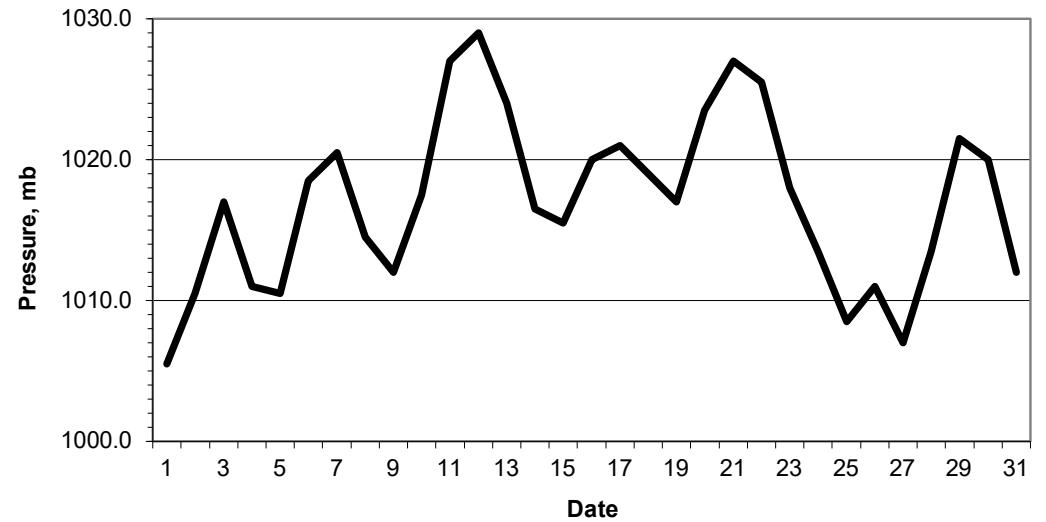
Days with

S	snow(5) or sleet(1) falling	L	50% snow cover at 09GMT	H	hail or ice pellets
T	thunder heard	G	gale	F	fog at 09GMT

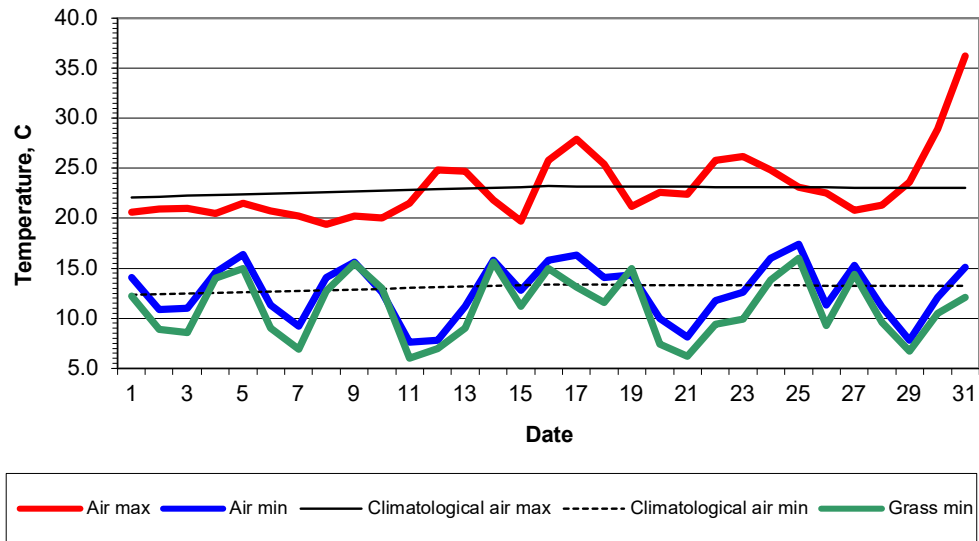
Daily soil temperatures, 0700GMT



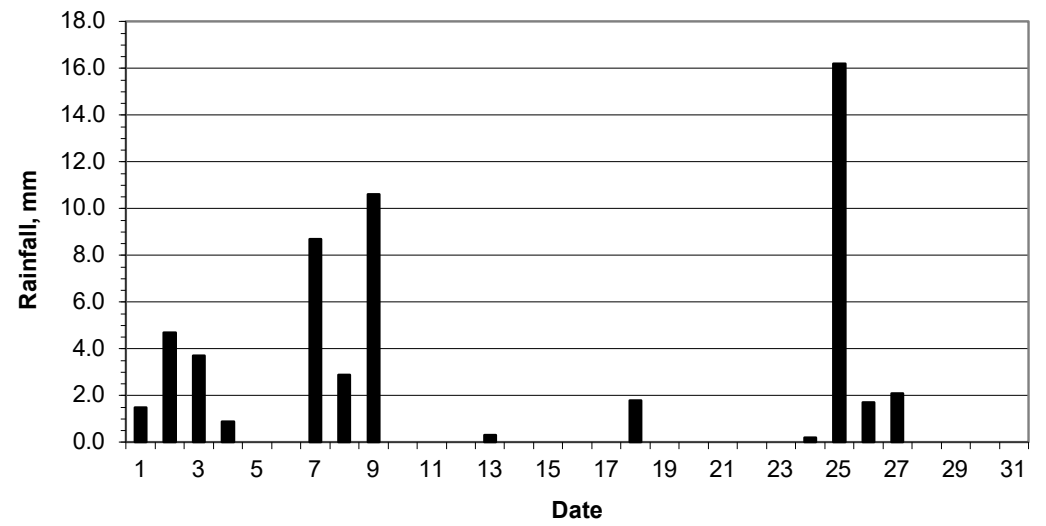
Mean sea level pressure, 0900GMT



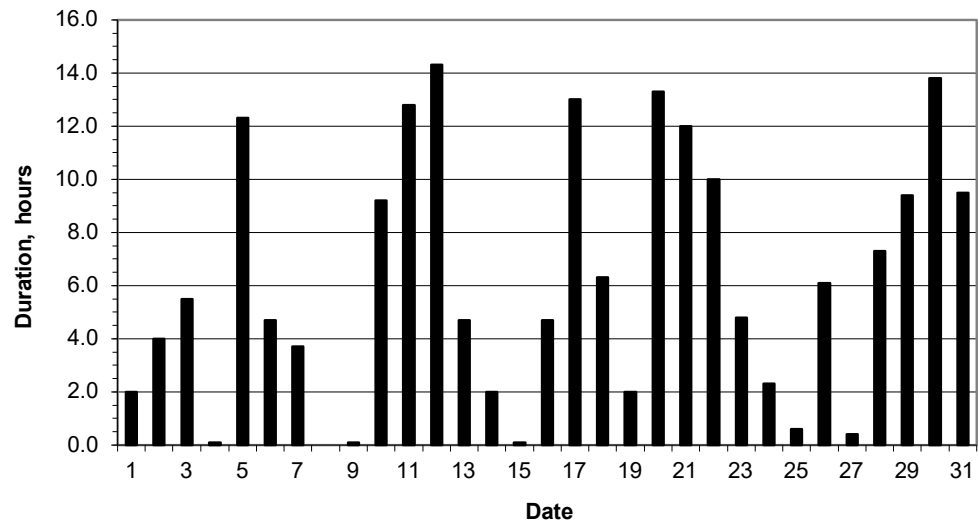
### Daily temperature extremes



### Daily rainfall



### Daily sunshine



### Daily evaporation

