

MAIDENHEAD METEOROLOGICAL OBSERVATIONS FOR JULY 2019

DD	N	dd	ff	ww	VV	0900GMT		Temperature			Soil temperatures (depth in cm)						E	SS	Rain	Sun	S	L	H	T	G	F	Press	Rain	Fr.	Pch																								
						Temp	RH	Max	Min	Gmin	5	10	20	30	50	100												hrs	hrs	Evap																								
01	6	27	09	02	97	19.5	56	24.3	12.1	10.4	17.2	17.7	18.6	18.7	17.9	15.7	03	0	0.0	9.4	0	0	0	0	0	0	1018.5	0.0	0.0	2.8	Number of days with 2019 normal Snow/sleet falling 0 0.0 50% snow cover 09GMT 0 0.0 Hail or ice pellets 0 0.1 Thunder 3 2.1 Gale 0 0.0 Fog at 09GMT 0 0.0 Air frost 0 0.0 Ground frost 0 0.0 0.2mm precipitation 11 11.4 1.0mm precipitation 6 8.0 5.0mm precipitation 3 2.7 No sunshine 2 1.1 37.2C on the 25th equalled the highest temperature recorded in Maidenhead and Hurley (with 10 August 2003) since before 1953. It was the coolest July for two years but was still 1.6 degC warmer than average. After a mainly dry 16 days, rainfall overall was only slightly below normal - and the month was also sunnier than normal.																							
02	2	31	05	02	97	18.6	63	22.9	9.5	7.5	16.6	17.2	18.7	18.9	18.0	15.9	03	0	0.0	10.9	0	0	0	0	0	1024.0	0.0	0.0	3.2																									
03	0	05	05	02	97	20.4	53	24.8	11.7	9.2	16.7	17.2	18.5	18.4	17.7	16.0	03	0	0.0	14.1	0	0	0	0	0	1026.5	0.0	0.0	3.7																									
04	0	36	02	02	97	21.1	49	27.4	10.1	8.0	16.4	17.2	18.5	18.6	17.8	16.1	03	0	0.0	14.3	0	0	0	0	0	1026.0	0.0	0.0	3.5																									
05	4	36	05	02	97	21.8	57	27.2	13.8	11.6	18.3	18.8	19.6	19.1	18.1	16.1	03	0	0.0	9.7	0	0	0	0	0	1024.5	0.0	0.0	3.1																									
06	1	00	00	02	97	22.9	57	24.0	12.7	10.6	18.2	18.8	19.9	19.5	18.5	16.3	03	0	0.6	4.8	0	0	0	0	0	1013.0	0.6	0.0	2.3																									
07	8	09	02	20	96	15.4	93	22.7	15.4	15.7	18.7	19.1	19.8	19.4	18.5	16.4	10	0	0.0	4.8	0	0	0	0	0	1016.0	0.0	0.0	2.0																									
08	7	13	05	02	97	19.2	63	23.9	12.9	10.0	18.2	18.3	19.0	18.9	18.2	16.5	03	0	0.0	6.8	0	0	0	0	0	1020.0	0.0	0.0	3.2																									
09	7	18	05	02	97	19.0	69	26.3	15.5	15.0	19.2	19.3	19.6	19.1	18.2	16.6	90	0	0.0	1.3	0	0	0	0	0	1020.5	0.0	0.0	2.7																									
10	7	27	02	02	97	21.6	63	26.2	16.6	14.5	19.7	19.8	20.0	19.3	18.3	16.6	90	0	0.0	4.2	0	0	0	0	0	1018.5	0.0	0.0	3.2																									
11	7	27	02	02	97	21.0	68	27.0	15.7	14.4	19.2	19.7	20.4	19.5	18.6	16.6	90	0	0.0	7.4	0	0	0	0	0	1012.5	0.0	0.0	2.8																									
12	4	31	05	02	97	21.8	65	26.4	16.3	14.1	19.3	19.8	20.3	19.7	18.7	16.8	90	0	0.0	11.7	0	0	0	0	0	1013.0	0.0	0.0	3.6																									
13	1	31	09	02	97	20.3	64	24.0	14.2	11.6	18.3	18.9	19.9	19.5	18.7	17.0	90	0	0.0	6.4	0	0	0	0	0	1021.0	0.0	0.0	2.3																									
14	8	09	05	02	97	17.2	79	22.1	14.0	11.7	18.3	18.9	19.5	19.3	18.6	17.0	90	0	tr	3.8	0	0	0	0	0	1022.5	0.0	0.0	2.0																									
15	8	05	09	02	97	17.0	68	23.5	10.9	8.0	17.6	17.8	18.5	18.6	18.2	17.0	90	0	0.0	7.2	0	0	0	0	0	1022.5	0.0	0.0	2.2																									
16	1	27	02	02	97	21.3	60	28.0	10.2	8.0	16.2	16.8	18.1	18.5	18.1	16.9	90	0	0.0	12.2	0	0	0	0	0	1019.0	0.0	0.0	3.4																									
17	7	13	02	02	96	21.7	67	26.5	12.7	10.4	18.1	18.4	19.4	19.1	18.4	16.9	90	0	3.6	7.0	0	0	0	0	0	1014.0	2.0	0.0	3.2																									
18	8	23	02	61	96	19.0	95	24.1	15.2	13.4	19.3	19.4	20.0	19.5	18.6	17.0	10	0	0.3	4.6	0	0	0	0	0	1009.0	0.2	0.0	2.3																									
19	8	18	02	21	97	16.7	86	20.2	11.1	8.6	16.7	17.1	18.3	18.9	18.4	17.0	10	0	14.2	0.0	0	0	0	0	0	1011.5	8.4	0.0	0.4																									
20	8	18	02	02	97	20.2	87	24.9	16.1	15.2	18.4	18.4	18.5	18.4	18.0	17.0	10	0	1.0	9.4	0	0	0	0	0	1006.5	0.1	0.0	2.3																									
21	7	23	05	03	97	20.6	71	23.5	12.2	10.2	16.4	16.9	18.0	18.7	18.1	16.9	10	0	0.0	4.8	0	0	0	0	0	1019.5	0.0	0.0	2.8																									
22	7	23	05	02	97	21.0	80	28.2	16.4	13.7	18.8	17.8	19.0	18.9	18.0	17.0	10	0	0.0	9.0	0	0	0	0	0	1021.0	0.0	0.0	2.3																									
23	7	09	02	42	09	23.9	72	33.0	15.5	13.5	18.9	19.1	19.9	19.5	18.5	17.0	03	0	3.6	11.0	0	0	0	1	0	1017.5	1.1	0.0	4.9																									
24	0	27	05	02	97	25.9	73	31.7	19.3	18.1	20.6	21.1	21.4	20.5	19.1	17.1	10	0	0.0	12.2	0	0	0	1	0	1010.5	0.0	0.0	4.0																									
25	0	09	02	02	97	29.1	44	37.2	17.4	15.4	20.0	20.4	21.3	21.0	19.7	17.4	03	0	0.3	10.2	0	0	0	0	0	1009.5	0.2	0.0	5.5																									
26	7	27	05	02	97	21.1	75	25.7	18.9	17.5	21.3	22.0	22.4	21.5	20.0	17.6	03	0	9.9	1.0	0	0	0	1	0	1010.0	8.3	0.0	1.7																									
27	8	31	02	61	96	18.0	95	19.9	16.8	17.2	19.7	20.3	21.1	20.9	20.0	17.8	10	0	0.4	0.0	0	0	0	0	0	1006.5	0.6	0.0	0.8																									
28	8	31	09	02	97	18.6	73	23.7	14.6	12.9	18.0	18.3	19.3	19.8	19.3	17.9	10	0	0.0	3.9	0	0	0	0	0	1005.5	0.0	0.0	2.6																									
29	0	18	02	02	97	21.1	54	26.0	11.7	10.0	16.1	17.0	18.6	19.4	19.0	17.9	10	0	0.4	12.2	0	0	0	0	0	1009.5	0.5	0.0	4.1																									
30	7	13	09	03	97	18.2	83	20.1	16.6	13.0	17.8	18.4	19.5	19.7	19.0	17.8	03	0	5.7	0.7	0	0	0	0	0	1003.5	4.5	0.0	1.2																									
31	7	23	09	60	97	18.4	78	24.0	16.0	13.1	17.8	18.1	18.6	19.0	18.6	17.7	10	0	tr	7.5	0	0	0	0	0	1012.5	0.0	0.0	3.3																									
Monthly means																												20.4	70	25.5	14.3	12.3	18.3	18.6	19.5	19.3	18.5	16.9												1015.6				
Monthly totals																																							40.0	222.5												26.5	0.0	87.4
Highest values																												29.1	37.2	19.3	18.1	21.3	22.0	22.4	21.5	20.0	17.9	14.2	14.3												8.4	0.0	5.5	
Lowest values																												15.4	44	19.9	9.5	7.5	16.1	16.8	18.0	18.4	17.7	15.7																
1981-2010 monthly climatological averages																												73	23.2	13.3	11.3	16.7	17.2	18.1	18.0	17.2	15.9	45.5	197.1												1016.2	31.3	0.0	76.3

Key

DD: date

07GMT observations

N	cloud cover (oktas, 9=obscured)	dd	wind direction (degrees/10)
ff	wind speed (knots)		
ww	present weather code		
1	cloud decreasing	25	recent rain shower
2	sky not changing	51	intermittent slight drizzle
3	cloud increasing	60	intermittent slight rain
21	recent rain	80	light rain shower
VV	visibility (00-50 metres/100, 94 very poor, 95 poor, 96 moderate, 97 good)		

Soil temperatures are for 0700GMT beneath bare soil (5, 10, 20cm) or grass (30, 50, 100cm)

09GMT observations

Temp	temperature (degC)	RH	relative humidity (%)
E	state of ground (00 dry, 10 moist, 20 wet, 90 cracked)	SS	snow depth (cm)
Press	air pressure (mb)		

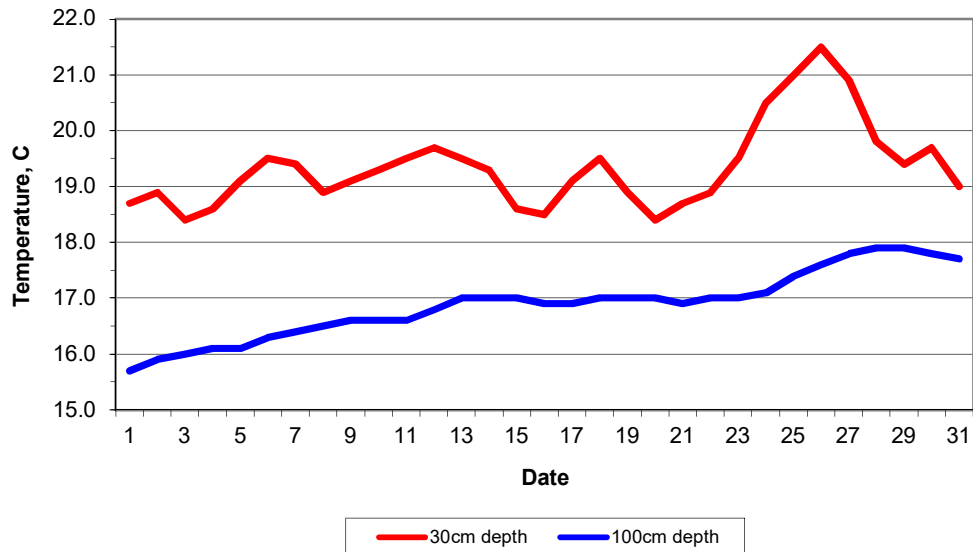
24 hour readings

Max	maximum temperature (degC) beginning 09GMT	Min	minimum temperature (degC) ending 09GMT
Gmin	grass minimum temperature (degC) ending 09GMT	Rain	precipitation beginning 09GMT
Sun	sunshine (hours) sunrise-sunset	Rain hrs	hours of rainfall (>0.1mm/h) 09-09GMT
Fr. Hrs	hours of air frost (00-24GMT)	Pch Evap	Piche evaporation (ml) beginning 09GMT

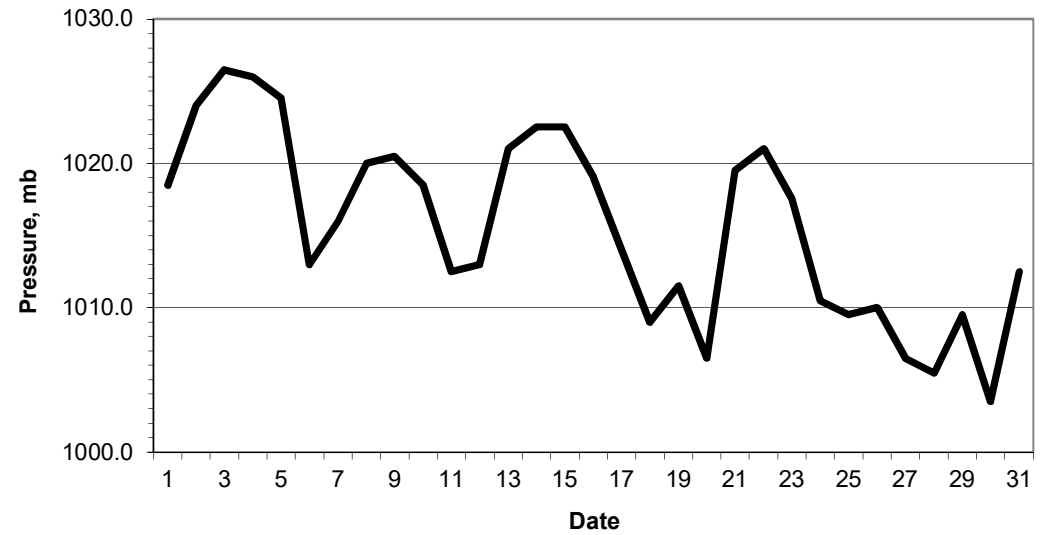
Days with

S	snow(5) or sleet(1) falling	L	50% snow cover at 09GMT	H	hail or ice pellets
T	thunder heard	G	gale	F	fog at 09GMT

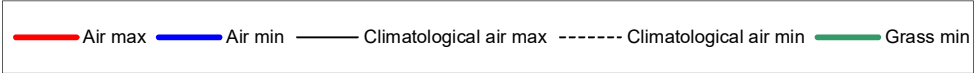
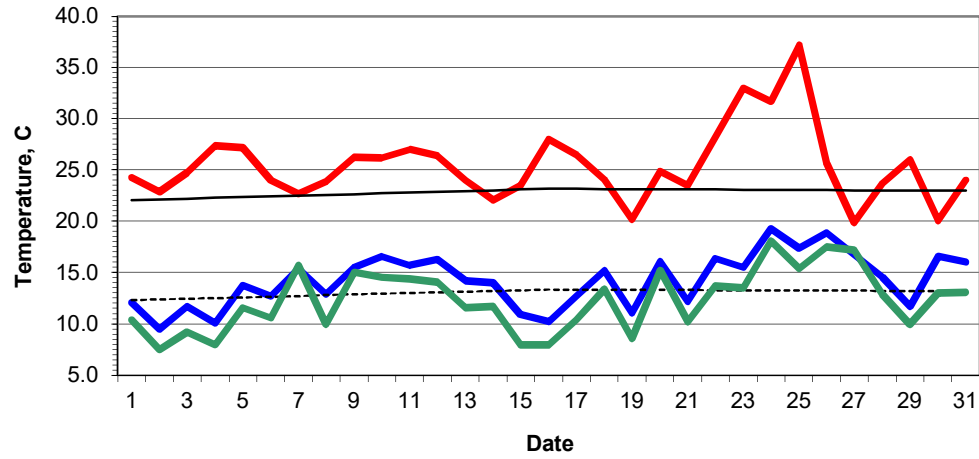
Daily soil temperatures, 0700GMT



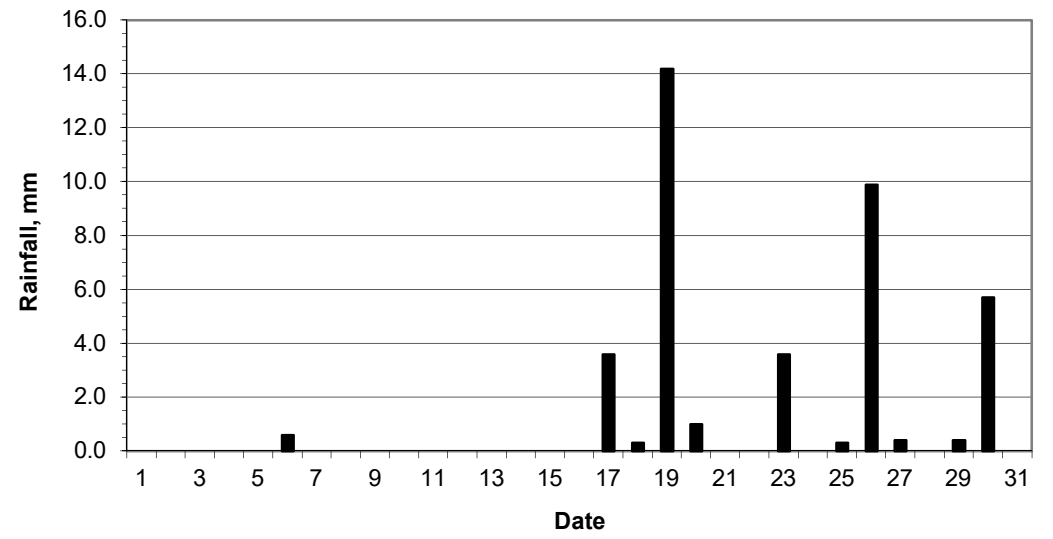
Mean sea level pressure, 0900GMT



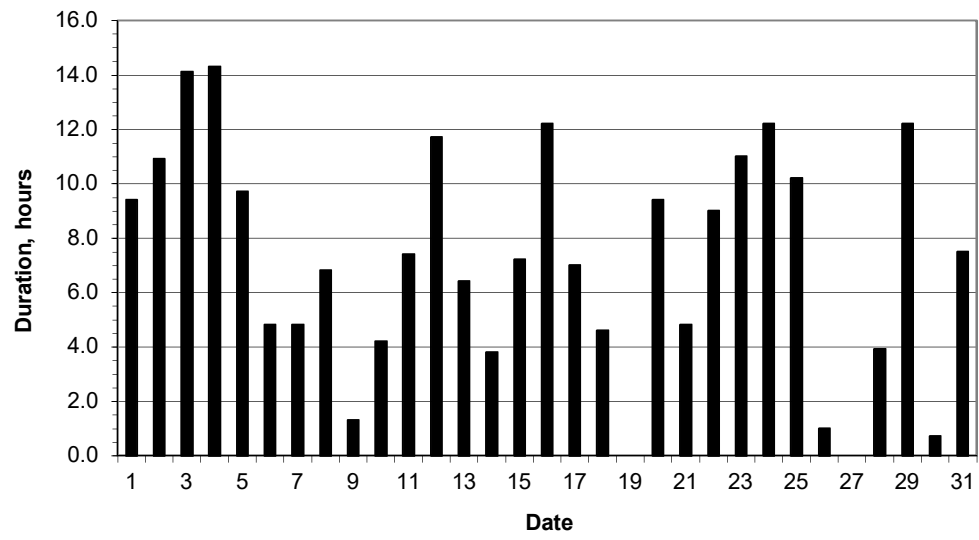
Daily temperature extremes



Daily rainfall



Daily sunshine



Daily evaporation

