

MAIDENHEAD METEOROLOGICAL OBSERVATIONS FOR JULY 2018

DD	N	dd	ff	ww	VV	0900GMT		Temperature			Soil temperatures (depth in cm)						E	SS	Rain	Sun	S	L	H	T	G	F	Press	Rain	Fr.	Pch				
						Temp	RH	Max	Min	Gmin	5	10	20	30	50	100												hrs	hrs	Evap				
01	6	09	02	03	97	24.1	51	31.9	15.3	13.6	19.3	19.6	20.4	19.8	18.8	16.6	90	0	0.0	11.5	0	0	0	0	0	0	0	1012.0	0.0	0.0	5.6	Number of		
02	4	09	05	02	97	25.7	32	30.4	17.6	15.4	20.0	20.6	21.4	20.4	19.1	16.8	90	0	0.0	14.8	0	0	0	0	0	0	0	1014.5	0.0	0.0	7.0	days with		
03	2	09	09	02	97	23.4	39	27.9	14.2	12.3	19.2	19.8	20.9	20.4	19.4	16.9	90	0	tr	13.7	0	0	0	0	0	0	1017.5	0.0	0.0	5.5	2018 normal			
04	7	09	02	02	97	18.6	65	27.0	13.7	12.4	19.8	20.1	20.7	20.2	19.3	17.1	90	0	0.5	5.8	0	0	0	0	0	0	1016.0	0.4	0.0	2.6	Snow/sleet falling			
05	2	36	05	02	97	23.4	59	30.5	16.2	15.4	20.3	20.5	21.0	20.5	19.4	17.2	90	0	0.0	12.4	0	0	0	0	0	0	1015.5	0.0	0.0	4.3	0 0.0			
06	1	36	05	02	97	24.4	56	30.6	14.8	13.0	20.0	20.2	21.0	20.6	19.6	17.4	90	0	0.0	13.9	0	0	0	0	0	0	1021.0	0.0	0.0	4.3	50% snow cover 09GMT			
07	4	31	02	02	97	26.0	53	31.0	16.1	14.5	20.4	20.8	21.5	21.1	19.9	17.4	90	0	0.0	14.0	0	0	0	0	0	0	1024.0	0.0	0.0	4.8	0 0.0			
08	2	00	00	02	97	26.8	51	31.4	15.8	14.1	20.9	21.1	21.9	21.4	20.1	17.6	90	0	0.0	14.9	0	0	0	0	0	0	1025.5	0.0	0.0	5.0	Hail or ice pellets			
09	4	31	02	02	97	26.3	50	30.0	15.8	14.1	20.6	21.3	22.0	21.6	20.4	17.8	90	0	0.0	10.5	0	0	0	0	0	0	1026.1	0.0	0.0	4.6	0 0.1			
10	6	36	05	02	97	19.1	51	23.4	15.0	13.6	20.2	20.6	20.7	21.4	20.3	17.9	90	0	0.0	13.1	0	0	0	0	0	0	1024.0	0.0	0.0	3.5	Thunder			
11	8	04	02	02	97	19.1	70	25.0	13.9	12.5	20.1	20.2	21.0	20.9	20.1	18.0	90	0	0.0	10.6	0	0	0	0	0	0	1022.0	0.0	0.0	3.0	1 2.1			
12	8	04	02	02	96	18.0	77	25.3	13.2	12.1	19.5	19.8	20.6	20.8	20.0	18.0	90	0	0.0	5.3	0	0	0	0	0	0	1022.5	0.0	0.0	2.9	Gale			
13	8	09	02	02	96	18.8	79	26.9	14.6	12.0	20.0	20.3	21.0	20.7	19.9	18.0	90	0	0.0	5.0	0	0	0	0	0	0	1023.5	0.0	0.0	2.8	0 0.0			
14	4	13	02	03	97	22.6	65	28.4	14.2	12.1	19.6	20.0	20.8	20.9	19.9	18.0	90	0	0.0	11.0	0	0	0	0	0	0	1022.0	0.0	0.0	4.2	Fog at 09GMT			
15	0	31	02	02	97	23.9	55	29.9	13.1	10.4	19.3	19.6	20.6	20.7	20.0	18.0	90	0	0.0	14.0	0	0	0	0	0	0	1018.0	0.0	0.0	4.7	0 0.0			
16	1	31	02	02	97	25.8	49	28.9	13.7	11.0	19.4	19.9	21.0	21.1	20.1	18.1	90	0	0.0	9.3	0	0	0	0	0	0	1014.0	0.0	0.0	5.0	Air frost			
17	1	27	05	02	97	20.8	56	24.6	12.2	9.6	18.9	19.4	20.8	21.0	20.1	18.1	90	0	0.0	7.1	0	0	0	0	0	0	1016.0	0.0	0.0	3.3	0 0.0			
18	6	22	02	02	97	20.6	61	25.7	15.2	13.8	19.9	20.2	20.5	20.4	19.8	18.1	90	0	0.0	1.5	0	0	0	0	0	0	1019.5	0.0	0.0	3.0	Ground frost			
19	7	36	02	02	97	21.9	57	28.0	12.9	10.1	18.8	19.2	20.1	20.2	19.7	18.1	90	0	0.0	8.6	0	0	0	0	0	0	1020.0	0.0	0.0	4.2	0 0.0			
20	7	13	02	02	97	22.4	49	25.7	16.2	13.1	20.7	21.1	21.2	20.8	19.9	18.1	90	0	0.1	1.4	0	0	0	0	0	0	1015.5	0.4	0.0	3.1	0.2mm precipitation			
21	3	09	02	02	97	21.9	72	27.7	16.2	14.1	20.1	20.5	21.0	20.7	19.9	18.1	90	0	0.0	8.4	0	0	0	0	0	0	1015.0	0.0	0.0	3.0	4 11.4			
22	7	31	02	02	97	22.4	65	28.9	15.2	12.9	20.7	20.8	21.2	21.0	20.1	18.2	90	0	0.0	3.4	0	0	0	0	0	0	1016.5	0.0	0.0	3.9	1.0mm precipitation			
23	1	27	02	02	97	27.0	54	32.3	17.8	15.0	20.7	21.2	22.0	21.5	20.3	18.2	90	0	0.0	14.0	0	0	0	0	0	0	1016.5	0.0	0.0	5.1	3 8.0			
24	1	27	02	02	97	24.5	61	29.5	16.5	14.4	20.9	21.2	22.1	21.9	20.7	18.4	90	0	0.0	11.2	0	0	0	0	0	0	1014.5	0.0	0.0	4.0	5.0mm precipitation			
25	0	36	02	02	97	23.2	63	30.5	16.4	13.5	20.7	21.2	22.1	21.9	20.9	18.6	90	0	0.0	11.4	0	0	0	0	0	0	1018.0	0.0	0.0	3.9	1 2.7			
26	6	09	02	01	97	26.5	56	34.0	15.8	13.5	21.3	21.4	22.0	21.8	20.9	18.6	90	0	0.0	10.2	0	0	0	0	0	0	1014.0	0.0	0.0	5.4	No sunshine			
27	5	09	02	03	97	24.8	57	30.9	18.9	16.7	22.4	22.7	23.0	22.4	21.1	18.7	90	0	2.6	7.0	0	0	0	1	0	0	1010.5	2.8	0.0	2.9	1 1.1			
28	1	22	09	02	97	19.1	54	22.9	15.4	13.5	19.8	20.6	21.9	22.1	21.2	18.9	10	0	5.7	9.6	0	0	0	0	0	0	1005.5	4.9	0.0	3.6	Overall very warm by day, many			
29	8	18	09	60	96	16.1	94	20.2	15.2	13.1	18.3	18.8	20.2	21.0	20.6	18.9	10	0	2.0	0.0	0	0	0	0	0	0	1005.0	2.8	0.0	0.9	dry days and very sunny. Only			
30	7	22	02	02	97	19.6	79	22.9	16.1	15.3	19.0	19.3	19.8	20.1	19.7	18.8	10	0	0.1	3.8	0	0	0	0	0	0	1010.0	0.3	0.0	2.2	2006 has been warmer in July			
31	5	27	05	02	97	20.5	61	25.2	15.3	13.5	17.8	18.3	19.4	19.9	19.5	18.6	10	0	0.0	12.8	0	0	0	0	0	0	1016.5	0.0	0.0	2.6	since 1953 while only 5 days			
Monthly means						22.5	59	28.0	15.2	13.2	20.0	20.3	21.1	20.9	20.0	18.0											1017.1					this month had maximum		
Monthly totals																			11.0	290.2							11.6	0.0	120.9			temperatures below 25C. The		
Highest values						27.0		34.0	18.9	16.7	22.4	22.7	23.0	22.4	21.2	18.9			5.7	14.9							4.9	0.0	7.0			driest July since 1994 (when		
Lowest values						16.1	32	20.2	12.2	9.6	17.8	18.3	19.4	19.8	18.8	16.6																		rain on the 27th-29th. The only
1981-2010 monthly climatological averages						73	23.2	13.3	11.3	16.7	17.2	18.1	18.0	17.2	15.9			45.5	197.1									1016.2	31.3	0.0	76.3			sunnier month since 1953 was
																																May 1989 (300 h locally).		

Key

DD: date

07GMT observations

N cloud cover (oktas, 9=obscured)      dd wind direction (degrees/10)  
ff wind speed (knots)  
ww present weather code  
1 cloud decreasing      25 recent rain shower  
2 sky not changing      51 intermittent slight drizzle  
3 cloud increasing      60 intermittent slight rain  
21 recent rain      80 light rain shower  
VV visibility (00-50 metres/100, 94 very poor, 95 poor, 96 moderate, 97 good)  
Soil temperatures are for 0700GMT beneath bare soil (5, 10, 20cm) or grass (30, 50, 100cm)

09GMT observations

Temp temperature (degC)      RH relative humidity (%)  
E state of ground (00 dry, 10 moist, 20 wet, 90 cracked)      SS snow depth (cm)  
Press air pressure (mb)

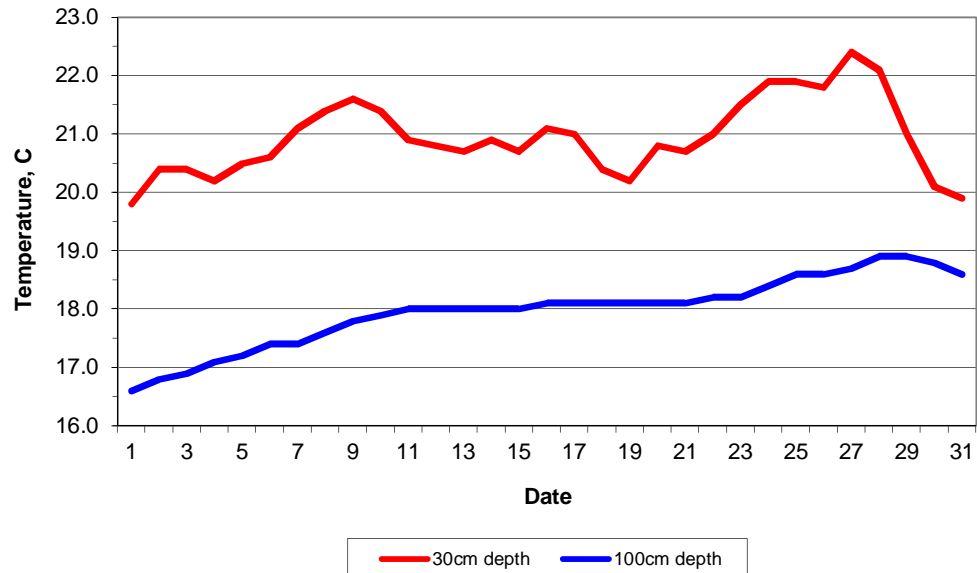
24 hour readings

Max maximum temperature (degC) beginning 09GMT      Min minimum temperature (degC) ending 09GMT  
Gmin grass minimum temperature (degC) ending 09GMT      Rain precipitation beginning 09GMT  
Sun sunshine (hours) sunrise-sunset      Rain hrs hours of rainfall (>0.1mm/h) 09-09GMT  
Fr. Hrs hours of air frost (00-24GMT)      Pch Evap Piche evaporation (ml) beginning 09GMT

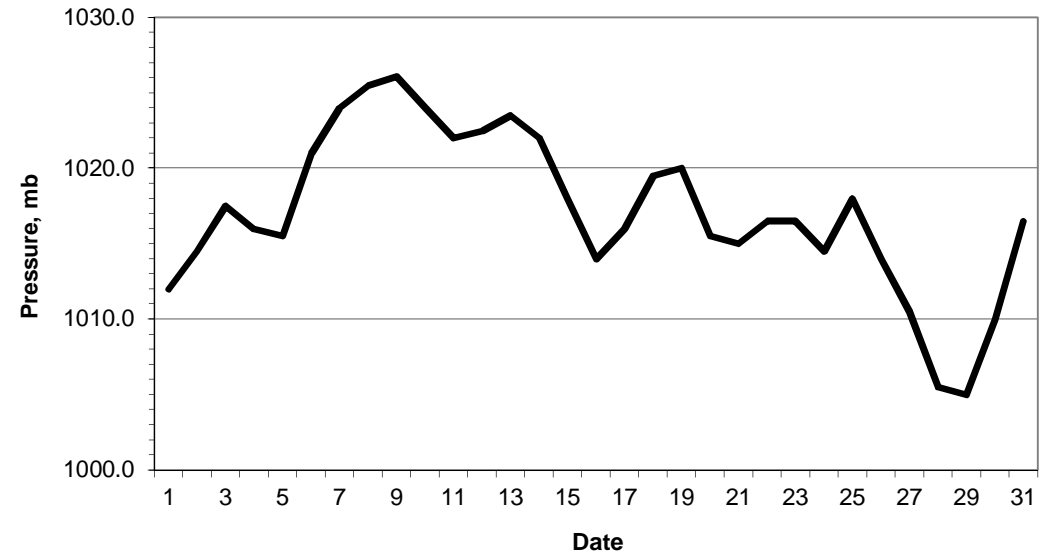
Days with

S snow(5) or sleet(1) falling      L 50% snow cover at 09GMT      H hail or ice pellets  
T thunder heard      G gale      F fog at 09GMT

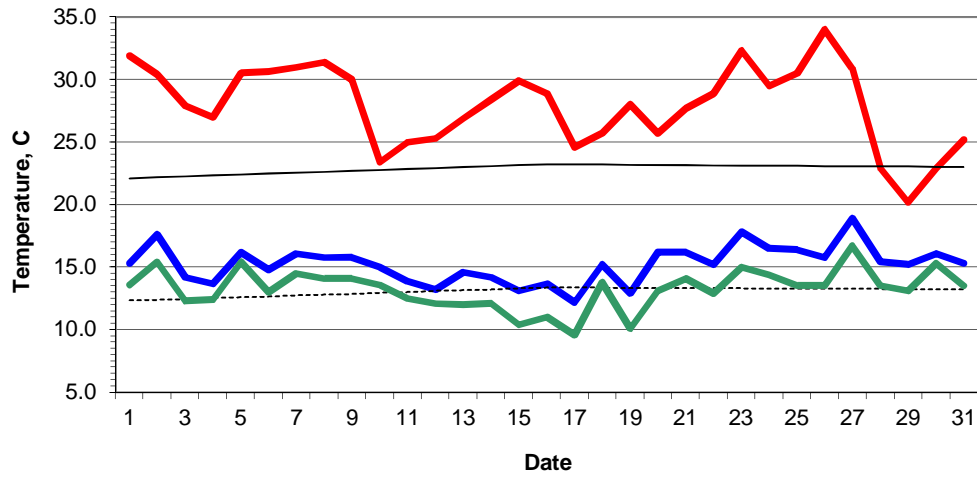
Daily soil temperatures, 0700GMT



Mean sea level pressure, 0900GMT

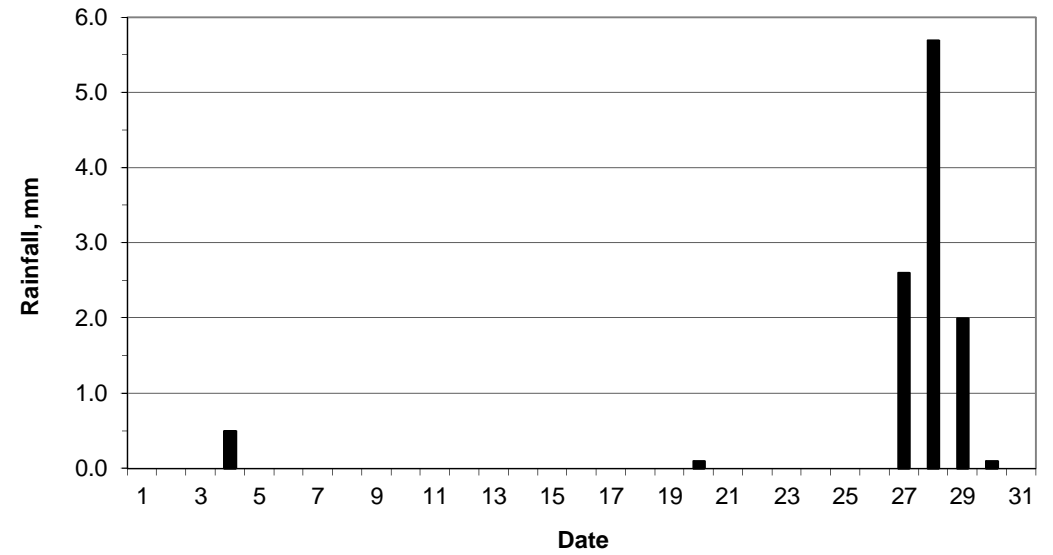


### Daily temperature extremes

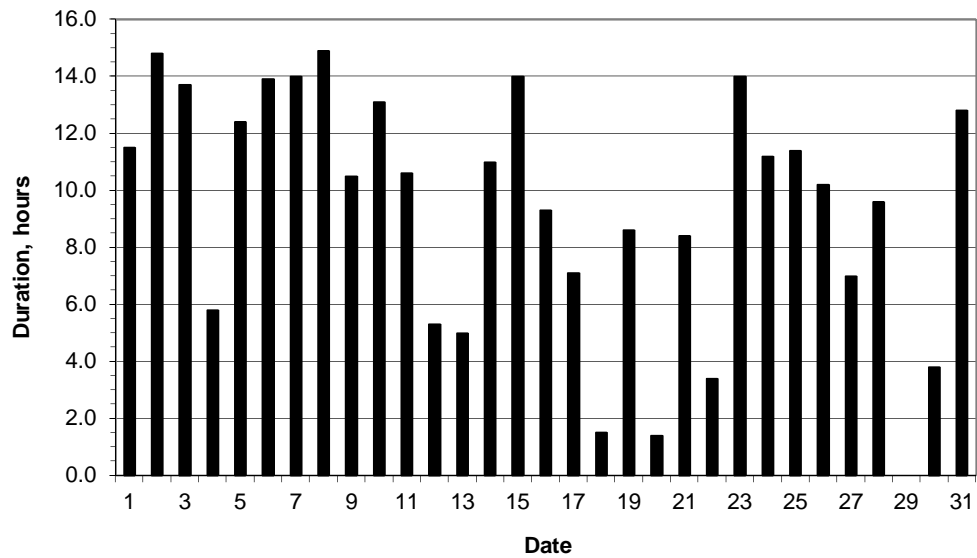


— Air max — Air min — Climatological air max - - - - - Climatological air min — Grass min

### Daily rainfall



### Daily sunshine



### Daily evaporation

