

MAIDENHEAD METEOROLOGICAL OBSERVATIONS FOR JULY 2014

DD	N	dd	ff	ww	VV	0900GMT		Temperature			Soil temperatures (depth in cm)						E	SS	Rain	Sun	S	L	H	T	G	F	Press	Rain	Fr.	Pch		
						Temp	RH	Max	Min	Gmin	5	10	20	30	50	100												hrs	hrs	Evap		
01	2	09	02	02	97	19.4	58	24.0	10.4	8.7	14.5	15.2	16.5	17.0	16.3	15.3	00	0	0.0	10.8	0	0	0	0	0	0	0	1019.5	0.0	0.0	3.7	Number of
02	1	04	02	02	97	20.0	62	25.0	9.2	6.8	14.4	15.2	16.7	17.0	16.3	15.3	00	0	0.0	10.9	0	0	0	0	0	0	0	1023.0	0.0	0.0	2.8	days with
03	0	22	05	02	97	21.5	52	26.7	11.4	9.3	15.7	16.7	18.0	17.8	16.7	15.4	90	0	0.0	14.7	0	0	0	0	0	0	0	1020.5	0.0	0.0	5.0	2014 normal
04	4	18	05	03	97	20.6	67	26.1	13.3	10.9	17.6	17.9	18.7	18.4	17.0	15.5	90	0	4.3	10.7	0	0	0	0	0	0	0	1008.5	4.8	0.0	3.3	Snow/sleet falling
05	8	18	05	02	97	17.5	93	21.5	16.5	16.5	19.0	19.1	19.4	18.8	17.3	15.6	10	0	0.9	0.4	0	0	0	0	0	0	0	1010.0	1.0	0.0	1.4	0 0.0
06	7	22	05	02	97	16.2	75	22.2	13.4	13.4	17.3	17.3	18.0	18.1	17.3	15.8	10	0	0.2	6.4	0	0	0	0	0	0	0	1003.0	0.2	0.0	2.4	50% snow cover 09GMT
07	4	27	02	02	97	19.4	60	22.2	9.1	7.9	14.7	15.5	16.9	17.8	17.0	15.8	00	0	0.4	7.0	0	0	0	0	0	0	0	1014.5	0.6	0.0	2.0	0 0.0
08	5	22	02	02	97	18.0	73	21.9	11.1	10.8	15.4	16.1	17.2	17.8	16.9	15.8	00	0	4.6	3.0	0	0	0	0	0	0	0	1014.5	1.9	0.0	1.5	Hail or ice pellets
09	7	31	13	02	97	16.4	83	23.4	12.2	10.6	14.9	15.5	16.8	17.3	16.7	15.9	10	0	0.0	6.3	0	0	0	0	0	0	0	1018.0	0.0	0.0	3.1	0 0.1
10	7	31	09	02	97	17.6	71	25.7	13.8	12.0	15.6	16.0	16.9	17.4	16.7	15.8	10	0	0.0	5.5	0	0	0	0	0	0	0	1017.5	0.0	0.0	3.4	Thunder
11	7	31	02	02	97	15.2	85	22.5	11.3	9.6	15.4	15.8	17.0	17.3	16.5	15.7	00	0	0.4	1.3	0	0	0	0	0	0	0	1018.0	1.0	0.0	1.3	3 2.1
12	2	36	05	02	97	22.5	69	27.2	13.5	13.2	17.7	17.3	17.5	17.2	16.6	15.7	00	0	3.5	9.2	0	0	0	0	0	0	0	1014.0	2.2	0.0	2.7	Gale
13	8	22	02	02	97	20.2	89	24.5	17.4	17.5	19.6	19.4	19.4	18.4	17.0	15.7	10	0	tr	6.0	0	0	0	0	0	0	0	1006.5	0.0	0.0	2.1	0 0.0
14	3	27	02	02	97	20.2	60	24.8	10.4	7.9	14.8	15.7	17.4	18.1	17.3	15.9	10	0	tr	10.4	0	0	0	0	0	0	0	1013.5	0.0	0.0	3.5	Fog at 09GMT
15	6	27	02	03	97	20.4	74	26.1	13.0	11.9	18.4	18.9	19.3	18.7	17.4	16.0	00	0	0.0	9.3	0	0	0	0	0	0	0	1017.0	0.0	0.0	3.0	0 0.0
16	1	27	02	02	97	22.3	62	26.3	12.2	10.8	16.8	17.4	18.6	18.7	17.6	16.1	00	0	0.0	6.7	0	0	0	0	0	0	0	1020.0	0.0	0.0	2.7	Air frost
17	2	31	02	02	97	23.1	70	29.4	15.5	13.5	18.3	18.9	19.6	19.0	17.7	16.2	00	0	16.1	13.7	0	0	0	0	0	0	0	1020.5	2.0	0.0	3.7	0 0.0
18	7	09	02	02	96	23.4	77	29.3	17.3	15.8	19.5	19.8	20.3	19.5	18.2	16.4	10	0	4.6	10.6	0	0	0	1	0	0	0	1011.5	3.6	0.0	2.6	Ground frost
19	8	36	02	61	96	20.6	93	28.1	18.7	17.1	20.6	20.6	20.6	20.0	18.5	16.5	10	0	0.0	4.3	0	0	0	0	0	0	0	1007.5	0.0	0.0	1.9	0 0.0
20	8	27	02	02	95	19.7	93	26.8	16.7	15.0	19.8	19.8	20.1	20.0	18.6	16.7	10	0	0.0	4.0	0	0	0	0	0	0	0	1008.0	0.0	0.0	2.1	0.2mm precipitation
21	5	27	02	01	97	20.3	84	27.2	16.0	14.1	18.8	19.1	19.8	19.8	18.6	16.9	10	0	0.0	8.7	0	0	0	0	0	0	0	1017.0	0.0	0.0	2.7	12 11.4
22	0	36	05	02	97	22.2	69	28.3	14.0	12.5	17.6	18.1	19.3	19.6	18.6	17.0	00	0	0.0	13.9	0	0	0	0	0	0	0	1021.5	0.0	0.0	3.3	1.0mm precipitation
23	1	36	05	02	97	21.7	72	29.1	15.0	12.6	18.2	18.8	19.7	19.9	18.8	17.1	00	0	0.0	12.8	0	0	0	0	0	0	0	1019.5	0.0	0.0	5.0	7 8.0
24	7	04	05	01	97	22.9	72	30.3	16.3	13.3	19.0	20.5	20.0	19.9	18.7	17.2	90	0	0.0	11.5	0	0	0	0	0	0	0	1016.5	0.0	0.0	5.0	5.0mm precipitation
25	7	36	02	02	97	21.2	81	27.7	16.2	13.5	19.7	19.8	20.5	20.1	19.0	17.2	90	0	5.8	5.7	0	0	0	1	0	0	0	1016.0	0.9	0.0	1.6	2 2.7
26	1	36	02	02	97	23.6	66	28.5	17.1	16.0	19.2	19.5	20.1	20.0	19.0	17.4	10	0	0.0	10.9	0	0	0	0	0	0	0	1015.5	0.0	0.0	3.1	No sunshine
27	7	31	05	02	97	20.2	67	26.2	17.2	14.5	19.9	20.0	20.4	20.2	19.2	17.4	00	0	1.8	5.6	0	0	0	0	0	0	0	1016.0	2.2	0.0	3.2	0 1.1
28	8	36	02	95	97	15.9	94	23.6	14.7	13.8	18.2	18.9	20.1	20.2	19.3	17.6	10	0	0.2	3.8	0	0	0	1	0	0	0	1013.5	0.2	0.0	2.4	July 2014 was a warm month,
29	6	36	02	02	97	20.9	65	22.5	14.5	12.9	18.1	18.3	19.0	19.6	19.0	17.6	10	0	0.0	10.8	0	0	0	0	0	0	0	1015.5	0.0	0.0	4.8	especially by day with the mean
30	6	31	05	02	97	20.1	61	26.8	12.3	9.1	17.7	18.3	19.6	19.9	19.0	17.6	00	0	0.0	12.8	0	0	0	0	0	0	0	1015.0	0.0	0.0	4.0	maximum temperature being 2.6
31	2	27	02	02	97	20.3	73	25.7	13.1	10.1	17.6	18.3	19.7	19.8	18.9	17.6	00	0	0.0	7.6	0	0	0	0	0	0	0	1013.5	0.0	0.0	3.8	degC above average. The
Monthly means						20.1	73	25.8	14.0	12.3	17.5	18.0	18.8	18.8	17.8	16.4												1015.0				rainfall total was slightly less
Monthly totals																			42.8	255.3								20.6	0.0	93.1	of a heavy thunderstorm during	
Highest values																												4.8	0.0	5.0	the early hours of the 18th. The	
Lowest values																																month was a very sunny one.
1981-2010 monthly climatological averages						15.2	52	21.5	9.1	6.8	14.4	15.2	16.5	17.0	16.3	15.3																Overall July 2013 was slightly
						73	23.2	13.3	11.3	16.7	17.2	18.1	18.0	17.2	15.9			45.5	197.1									1016.2	31.3	0.0	76.3	warmer and sunnier, though.

Key

DD: date

07GMT observations

N cloud cover (oktas, 9=obscured) dd wind direction (degrees/10)
ff wind speed (knots)
ww present weather code
1 cloud decreasing 25 recent rain shower
2 sky not changing 51 intermittent slight drizzle
3 cloud increasing 60 intermittent slight rain
21 recent rain 80 light rain shower
VV visibility (00-50 metres/100, 94 very poor, 95 poor, 96 moderate, 97 good)
Soil temperatures are for 0700GMT beneath bare soil (5, 10, 20cm) or grass (30, 50, 100cm)

09GMT observations

Temp temperature (degC) RH relative humidity (%)
E state of ground (00 dry, 10 moist, 20 wet, 90 cracked) SS snow depth (cm)
Press air pressure (mb)

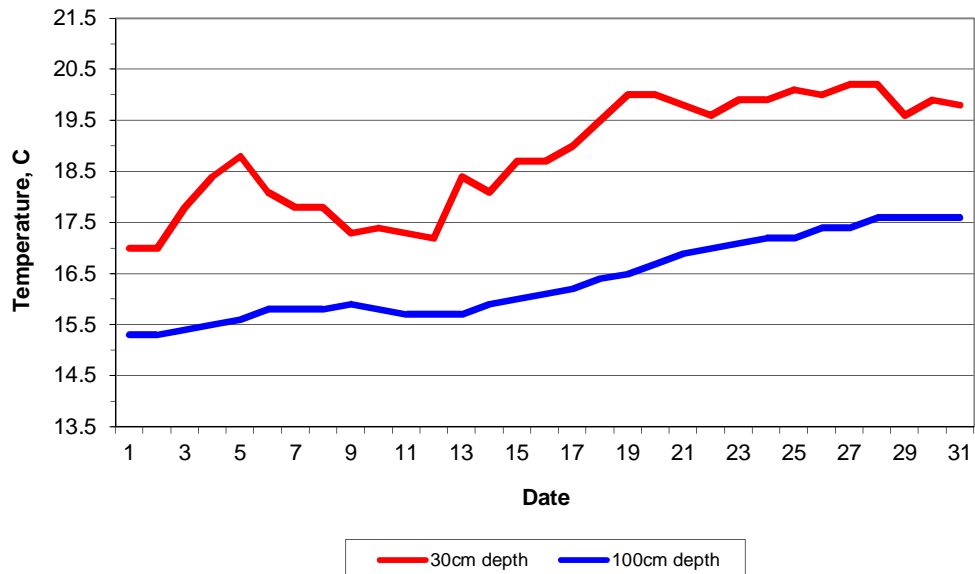
24 hour readings

Max maximum temperature (degC) beginning 09GMT Min minimum temperature (degC) ending 09GMT
Gmin grass minimum temperature (degC) ending 09GMT Rain precipitation beginning 09GMT
Sun sunshine (hours) sunrise-sunset Rain hrs hours of rainfall (>0.1mm/h) 09-09GMT
Fr. Hrs hours of air frost (00-24GMT) Pch Evap Piche evaporation (ml) beginning 09GMT

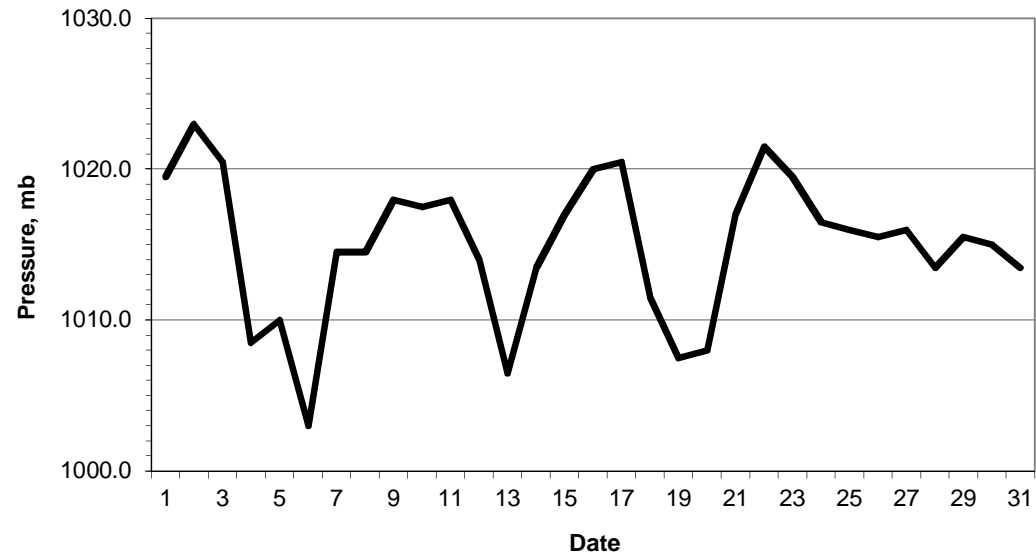
Days with

S snow(5) or sleet(1) falling L 50% snow cover at 09GMT H hail or ice pellets
T thunder heard G gale F fog at 09GMT

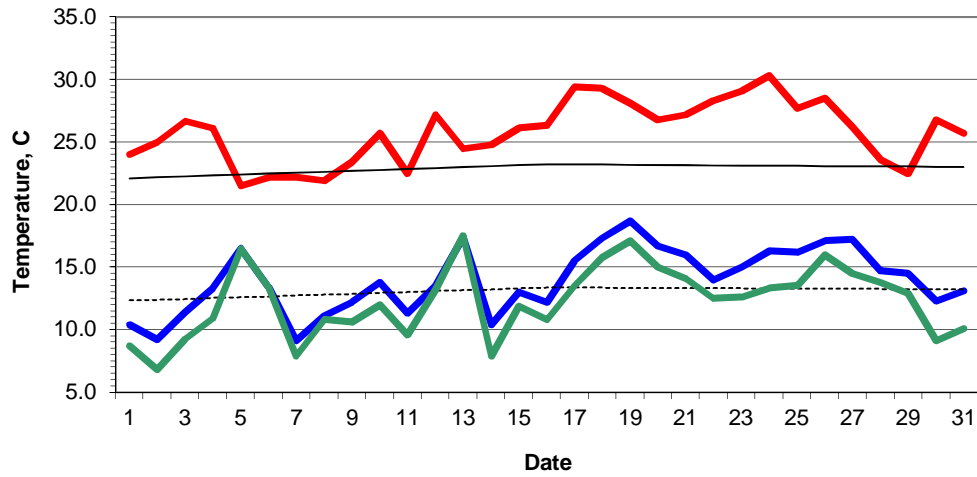
Daily soil temperatures, 0700GMT



Mean sea level pressure, 0900GMT

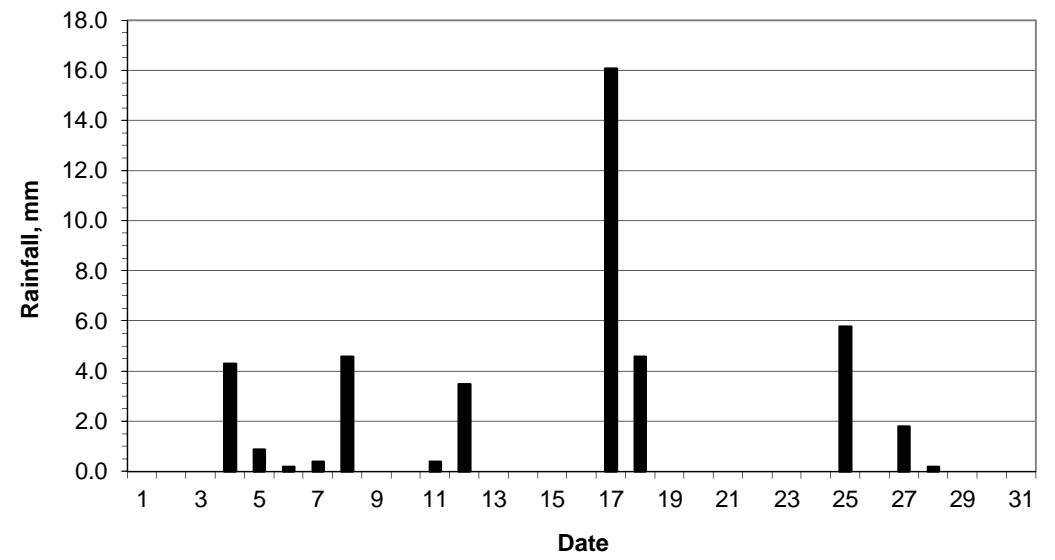


Daily temperature extremes

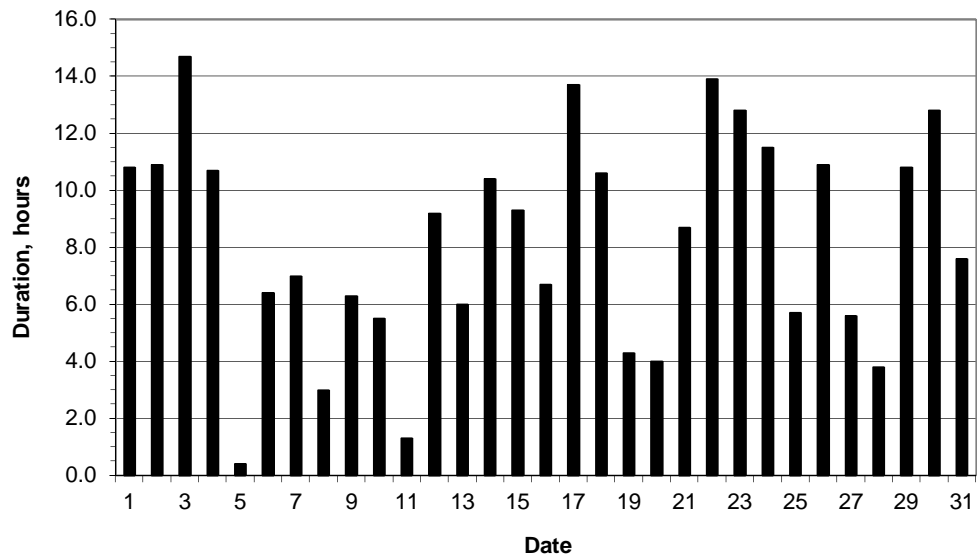


— Air max — Air min — Climatological air max - - - - - Climatological air min — Grass min

Daily rainfall



Daily sunshine



Daily evaporation

