

MAIDENHEAD METEOROLOGICAL OBSERVATIONS FOR JULY 2013

DD	N	dd	ff	ww	VV	0900GMT		Temperature			Soil temperatures (depth in cm)						E	SS	Rain	Sun	S	L	H	T	G	F	Press	Rain	Fr.	Pch			
						Temp	RH	Max	Min	Gmin	5	10	20	30	50	100												hrs	hrs	Evap			
01	7	27	02	02	97	18.4	63	21.2	12.6	9.6	16.6	17.1	17.5	17.1	15.2	13.6	00	0	0.0	8.2	0	0	0	0	0	0	0	1015.5	0.0	0.0	2.3	Number of days with 2013 normal Snow/sleet falling 0 0.0 50% snow cover 09GMT 0 0.0 Hail or ice pellets 0 0.1 Thunder 5 2.1 Gale 0 0.0 Fog at 09GMT 0 0.0 Air frost 0 0.0 Ground frost 0 0.0 0.2mm precipitation 8 11.4 1.0mm precipitation 5 8.0 5.0mm precipitation 3 2.7 No sunshine 1 1.1 A dry, very sunny and very warm month. Almost three weeks of high pressure resulted in 19-day drought and temperatures above 25C on 20 days. It was the warmest and the sunniest of any month since July 2006. Although thunderstorms were light in intensity over Maidenhead, thunder was heard of 5 days.	
02	8	22	02	03	97	14.5	81	17.3	10.7	9.0	16.0	16.2	16.7	16.5	15.3	13.8	00	0	1.7	0.0	0	0	0	0	0	0	1011.0	3.0	0.0	1.3			
03	8	22	02	02	96	16.4	92	21.9	13.3	11.3	16.3	16.1	16.3	15.9	15.2	13.8	10	0	tr	0.1	0	0	0	0	0	0	1005.5	0.0	0.0	1.4			
04	8	22	05	20	97	18.2	76	24.1	11.9	9.4	16.4	16.2	16.2	15.9	15.2	13.8	00	0	0.0	5.9	0	0	0	0	0	0	1017.5	0.0	0.0	1.8			
05	0	31	02	02	97	20.9	51	26.0	11.2	8.9	15.2	14.8	16.1	16.0	15.2	13.9	00	0	0.0	12.0	0	0	0	0	0	0	1028.0	0.0	0.0	3.0			
06	4	04	02	02	97	22.1	49	27.4	11.5	8.9	16.7	16.5	17.2	16.9	15.6	14.0	00	0	0.0	11.8	0	0	0	0	0	0	1028.0	0.0	0.0	2.9			
07	0	36	02	02	97	25.4	62	29.5	15.5	12.5	18.4	18.2	18.3	17.6	16.0	14.1	00	0	0.0	13.5	0	0	0	0	0	0	1030.0	0.0	0.0	3.8			
08	0	04	02	02	97	22.8	64	27.2	15.1	10.9	18.2	18.6	19.3	18.4	16.5	14.3	00	0	0.0	14.0	0	0	0	0	0	0	1031.0	0.0	0.0	4.2			
09	0	36	05	02	97	20.5	51	27.1	12.1	9.0	16.9	18.1	19.1	18.8	16.9	14.6	90	0	0.0	14.6	0	0	0	0	0	0	1027.0	0.0	0.0	5.1			
10	0	04	05	02	97	22.0	56	24.9	13.4	8.9	17.9	18.2	19.0	18.7	17.2	14.8	90	0	0.0	13.8	0	0	0	0	0	0	1024.0	0.0	0.0	3.6			
11	7	05	02	01	97	16.6	60	23.0	11.0	7.5	17.7	17.8	18.5	18.5	17.2	15.0	90	0	0.0	12.1	0	0	0	0	0	0	1025.0	0.0	0.0	3.3			
12	6	04	05	01	97	15.4	72	25.5	11.6	8.9	16.7	17.4	18.3	18.4	17.2	15.1	90	0	0.0	6.8	0	0	0	0	0	0	1025.0	0.0	0.0	3.3			
13	1	27	02	01	97	25.5	58	31.4	14.3	11.4	19.0	18.6	18.8	18.4	17.2	15.2	90	0	0.0	13.3	0	0	0	0	0	0	1022.5	0.0	0.0	4.0			
14	5	27	02	02	97	25.9	64	29.9	16.8	13.5	20.4	20.2	20.3	19.5	17.6	15.3	90	0	0.0	11.5	0	0	0	0	0	0	1022.0	0.0	0.0	3.9			
15	5	31	02	02	97	24.9	47	31.0	15.3	11.2	19.0	19.9	20.7	20.0	17.8	15.4	90	0	0.0	12.9	0	0	0	0	0	0	1021.0	0.0	0.0	4.7			
16	7	31	02	02	96	23.9	64	31.4	16.1	13.0	20.1	20.5	21.1	20.3	18.3	15.6	90	0	0.0	10.9	0	0	0	0	0	0	1020.5	0.0	0.0	4.0			
17	0	27	02	02	97	25.2	62	31.8	15.8	12.6	20.5	20.7	21.2	20.6	18.5	15.9	90	0	0.0	10.3	0	0	0	1	0	0	1021.5	0.0	0.0	3.9			
18	0	04	02	02	97	25.3	54	29.6	17.5	13.9	20.6	21.1	21.7	20.9	19.0	16.1	90	0	0.0	13.0	0	0	0	0	0	0	1024.5	0.0	0.0	4.9			
19	1	04	05	02	97	23.8	48	29.8	15.3	11.7	19.5	20.4	21.4	20.9	19.1	16.3	90	0	0.0	14.1	0	0	0	0	0	0	1023.5	0.0	0.0	4.7			
20	7	04	05	01	97	21.5	70	24.3	16.2	13.1	21.1	21.2	21.8	21.1	19.4	16.5	90	0	0.0	4.2	0	0	0	0	0	0	1022.0	0.0	0.0	3.2			
21	8	04	02	02	97	19.2	79	27.1	17.0	15.9	20.5	20.4	20.7	20.1	19.0	16.7	90	0	0.0	7.6	0	0	0	0	0	0	1018.5	0.0	0.0	2.7			
22	5	04	02	02	97	22.7	69	32.9	17.3	14.6	20.0	20.2	20.6	20.1	18.7	16.7	90	0	0.9	11.4	0	0	0	0	0	0	1014.0	0.2	0.0	3.9			
23	7	04	02	02	95	24.4	76	29.5	19.2	16.5	21.4	21.7	22.0	21.0	19.2	16.8	10	0	0.9	5.6	0	0	0	1	0	0	1010.0	0.2	0.0	2.4			
24	7	27	02	02	96	18.2	83	27.5	14.4	12.1	19.1	19.9	20.8	20.7	19.3	16.9	90	0	4.5	7.4	0	0	0	1	0	0	1013.0	1.7	0.0	2.8			
25	7	13	02	01	96	19.2	92	26.0	17.1	14.4	19.6	20.2	21.0	20.6	19.3	17.0	10	0	tr	7.1	0	0	0	0	0	0	1010.5	0.0	0.0	2.0			
26	4	27	02	02	97	21.9	66	26.8	12.4	9.8	17.2	17.3	19.4	19.9	19.1	17.0	10	0	0.0	8.4	0	0	0	0	0	0	1010.5	0.0	0.0	3.1			
27	7	31	05	03	97	21.3	57	28.6	12.7	9.5	18.8	18.7	19.5	19.6	18.9	17.0	90	0	11.2	4.3	0	0	0	1	0	0	1006.0	4.5	0.0	2.5			
28	6	22	09	02	97	19.2	68	24.4	14.6	12.9	18.4	18.8	19.2	19.7	18.9	17.0	10	0	0.5	8.9	0	0	0	0	0	0	1005.0	0.2	0.0	2.5			
29	7	18	05	02	97	20.2	73	23.3	16.0	13.1	18.4	18.8	19.5	19.7	18.7	17.1	10	0	10.5	8.0	0	0	0	1	0	0	1009.0	5.2	0.0	1.9			
30	8	22	05	02	96	16.1	96	21.9	14.5	12.5	17.5	17.8	18.8	19.3	18.6	17.1	10	0	9.9	3.5	0	0	0	0	0	0	1011.5	3.5	0.0	0.7			
31	8	22	02	21	96	18.1	92	24.5	15.5	13.2	17.8	17.9	18.4	18.6	18.2	17.0	10	0	tr	1.4	0	0	0	0	0	0	1014.0	0.0	0.0	1.6			
Monthly means						21.0	68	26.7	14.4	11.6	18.4	18.7	19.3	19.0	17.7	15.6												1018.3					
Monthly totals																				40.1	276.6							18.5	0.0	95.4			
Highest values																																	
Lowest values						25.9		32.9	19.2	16.5	21.4	21.7	22.0	21.1	19.4	17.1				11.2	14.6								5.2	0.0	5.1		
1981-2010 monthly climatological averages						14.5	47	17.3	10.7	7.5	15.2	14.8	16.1	15.9	15.2	13.6																	
						73	23.2	13.3	11.3	16.7	17.2	18.1	18.0	17.2	15.9				45.5	197.1								1016.2	31.3	0.0	76.3		

Key

DD: date

07GMT observations

N cloud cover (oktas, 9=obscured) dd wind direction (degrees/10)
ff wind speed (knots)
ww present weather code
1 cloud decreasing 25 recent rain shower
2 sky not changing 51 intermittent slight drizzle
3 cloud increasing 60 intermittent slight rain
21 recent rain 80 light rain shower
VV visibility (00-50 metres/100, 94 very poor, 95 poor, 96 moderate, 97 good)
Soil temperatures are for 0700GMT beneath bare soil (5, 10, 20cm) or grass (30, 50, 100cm)

09GMT observations

Temp temperature (degC) RH relative humidity (%)
E state of ground (00 dry, 10 moist, 20 wet, 90 cracked) SS snow depth (cm)
Press air pressure (mb)

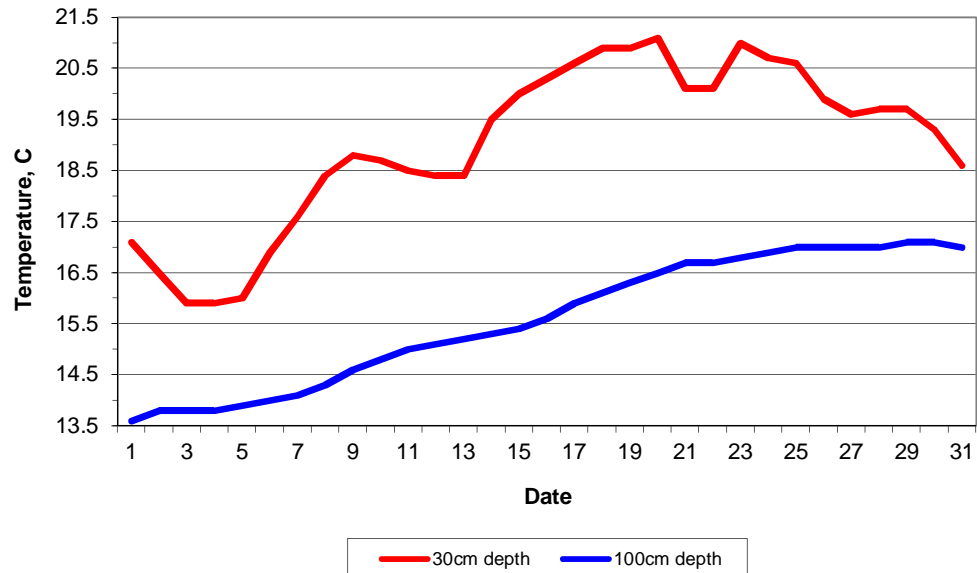
24 hour readings

Max maximum temperature (degC) beginning 09GMT Min minimum temperature (degC) ending 09GMT
Gmin grass minimum temperature (degC) ending 09GMT Rain precipitation beginning 09GMT
Sun sunshine (hours) sunrise-sunset Rain hrs hours of rainfall (>0.1mm/h) 09-09GMT
Fr. Hrs hours of air frost (00-24GMT) Pch Evap Piche evaporation (ml) beginning 09GMT

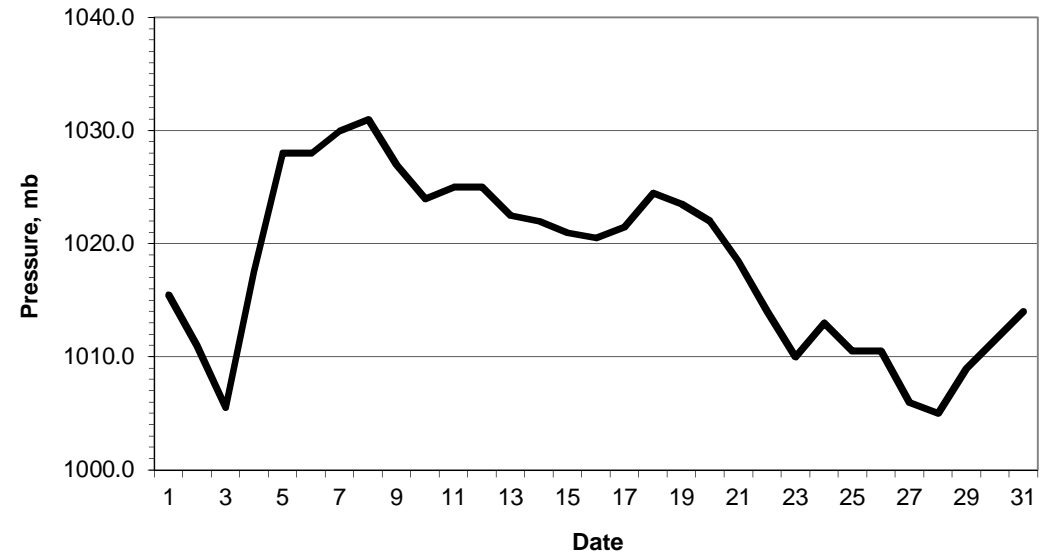
Days with

S snow(5) or sleet(1) falling L 50% snow cover at 09GMT H hail or ice pellets
T thunder heard G gale F fog at 09GMT

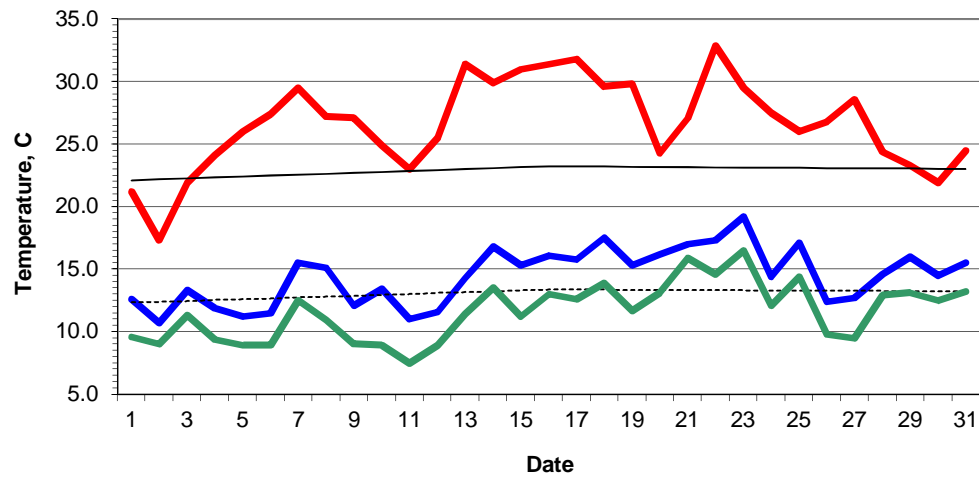
Daily soil temperatures, 0700GMT



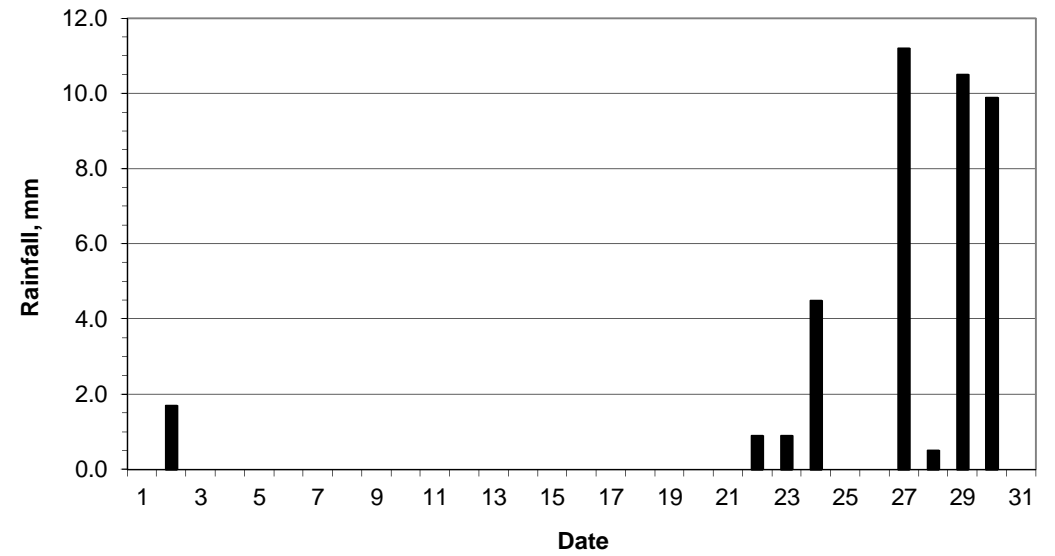
Mean sea level pressure, 0900GMT



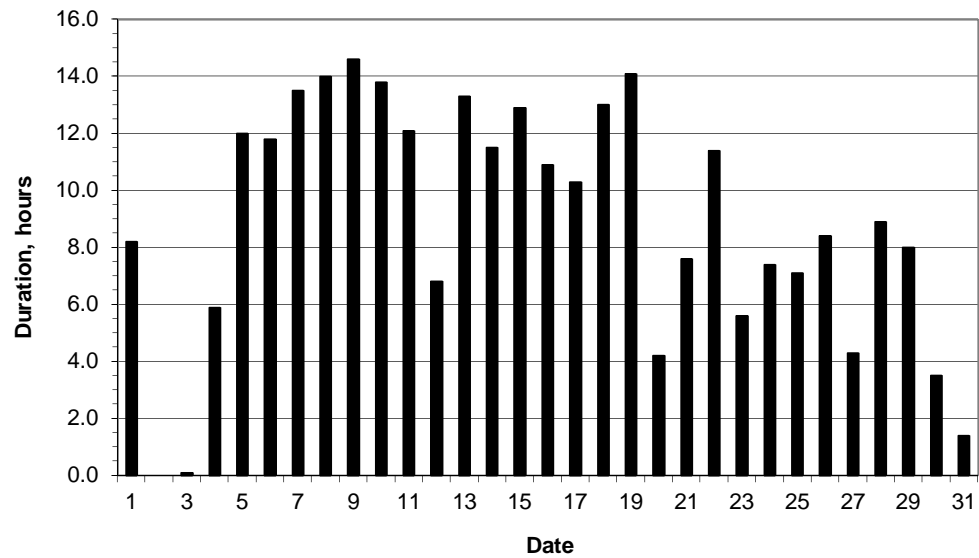
Daily temperature extremes



Daily rainfall



Daily sunshine



Daily evaporation

