

MAIDENHEAD METEOROLOGICAL OBSERVATIONS FOR JULY 2009

DD	N	dd	ff	ww	VV	0900GMT			Temperature			Soil temperatures (depth in cm)						E	SS	Rain	Sun	S	L	H	T	G	F	Press	Rain hrs	Fr. hrs	Pch Evap		
						Temp	RH	Max	Min	Gmin	5	10	20	30	50	100																	
01	6	09	02	02	97	25.1	57	31.1	18.7	17.7	21.0	21.1	21.2	20.0	18.5	15.7	00	0	0.0	10.0	0	0	0	0	0	0	0	1022.0	0.0	0.0	4.7	Number of	
02	2	12	05	02	97	25.0	59	30.7	18.2	13.3	19.9	20.2	20.8	20.0	18.6	16.0	00	0	1.9	12.6	0	0	0	0	0	0	1018.5	1.5	0.0	4.0	days with		
03	8	22	02	02	96	19.6	89	26.0	18.7	17.6	21.1	21.3	21.9	20.6	19.0	16.2	10	0	0.0	7.3	0	0	0	0	0	0	1011.5	0.0	0.0	2.1	2009 normal		
04	1	22	05	02	97	23.2	54	25.4	12.5	11.4	18.7	18.0	19.5	19.5	19.0	16.4	00	0	tr	8.7	0	0	0	0	0	0	1013.0	0.0	0.0	2.8	Snow/sleet falling		
05	7	20	05	03	97	21.1	62	24.4	15.1	13.0	17.5	19.9	19.6	19.2	18.6	16.5	00	0	0.0	8.1	0	0	0	0	0	0	1010.5	0.0	0.0	3.0	0 0.0		
06	6	18	09	02	97	19.5	63	22.0	13.0	10.5	18.3	18.4	19.2	19.0	18.4	16.6	00	0	2.8	5.0	0	0	0	0	0	0	1005.5	1.8	0.0	2.1	50% snow cover 09GMT		
07	7	24	09	02	97	18.5	85	20.0	14.0	13.1	17.7	17.0	18.5	18.6	18.1	16.6	10	0	6.0	1.3	0	0	0	0	0	0	1003.0	5.8	0.0	0.7	0 0.0		
08	8	25	05	58	97	14.0	91	20.5	12.1	10.7	15.8	16.4	17.5	18.0	17.9	16.5	10	0	0.6	2.2	0	0	0	0	0	0	1012.0	0.5	0.0	1.2	Hail or ice pellets		
09	1	32	05	02	97	18.7	50	20.0	9.6	8.2	14.5	15.4	17.4	17.6	17.5	16.5	10	0	0.0	6.6	0	0	0	0	0	0	1017.0	0.0	0.0	2.4	0 0.2		
10	0	27	09	02	97	19.5	50	21.5	9.6	7.9	14.2	15.0	16.8	17.4	17.3	16.4	10	0	0.0	7.7	0	0	0	0	0	0	1017.5	0.0	0.0	2.5	Thunder		
11	8	27	05	02	97	18.7	80	21.7	14.9	14.1	17.2	17.2	18.0	17.7	17.3	16.4	10	0	7.7	1.1	0	0	0	0	0	0	1014.5	9.5	0.0	0.9	3 2.0		
12	6	22	05	02	97	20.1	71	23.4	14.8	14.6	17.7	17.6	17.9	17.7	17.3	16.2	10	0	tr	7.8	0	0	0	0	0	0	1007.0	0.0	0.0	2.3	Gale		
13	8	23	09	02	97	18.5	68	21.5	12.6	11.0	16.7	17.2	18.2	18.1	17.4	16.2	10	0	tr	5.9	0	0	0	0	0	0	1010.0	0.0	0.0	2.2	0 0.0		
14	6	18	05	02	97	19.1	70	23.5	12.1	10.5	16.9	16.8	17.5	17.7	17.4	16.2	10	0	0.7	8.4	0	0	0	0	0	0	1008.5	0.4	0.0	2.8	Fog at 09GMT		
15	7	21	09	02	97	19.7	69	22.5	15.2	13.4	17.2	17.3	18.0	18.0	17.3	16.2	10	0	0.0	4.3	0	0	0	0	0	0	1009.0	0.0	0.0	2.0	0 0.0		
16	8	27	02	02	97	19.3	69	24.0	13.5	11.9	16.9	17.1	18.0	18.0	17.4	16.2	10	0	6.5	2.7	0	0	0	1	0	0	1020.0	2.4	0.0	1.8	Air frost		
17	7	21	02	02	96	15.4	90	18.5	14.4	13.6	17.8	17.7	18.1	18.0	17.4	16.2	10	0	3.9	0.2	0	0	0	0	0	0	1004.0	4.0	0.0	0.8	0 0.0		
18	1	27	09	02	97	18.5	57	21.4	13.0	11.3	15.4	15.7	17.2	17.4	17.3	16.3	10	0	tr	7.8	0	0	0	1	0	0	1011.0	0.0	0.0	2.3	Ground frost		
19	7	23	09	02	97	17.4	71	20.4	12.1	10.5	16.6	16.7	17.3	17.6	17.4	16.2	10	0	0.3	1.9	0	0	0	0	0	0	1011.5	0.3	0.0	1.7	0 0.0		
20	7	22	02	02	97	18.9	63	21.4	10.3	8.5	15.4	15.6	16.9	17.2	17.2	16.2	10	0	2.3	3.3	0	0	0	0	0	0	1015.0	2.0	0.0	2.1	0.2mm precipitation		
21	8	09	05	21	96	17.3	95	20.0	14.5	13.0	16.0	16.7	17.4	17.4	17.2	16.1	10	0	4.8	0.1	0	0	0	0	0	0	1007.0	3.9	0.0	1.0	19 10.7		
22	7	09	05	01	97	18.4	78	21.4	13.0	11.0	16.4	16.5	17.0	17.1	16.9	16.1	10	0	tr	4.4	0	0	0	0	0	0	1003.0	0.0	0.0	1.7	1.0mm precipitation		
23	6	21	02	02	97	19.3	55	22.3	13.6	12.0	16.3	16.5	17.2	17.1	16.8	16.0	10	0	10.8	5.6	0	0	0	0	0	0	1002.5	1.8	0.0	1.9	14 7.5		
24	7	22	05	02	97	17.4	89	20.9	12.1	11.3	16.3	16.6	17.1	17.5	16.8	16.1	10	0	3.5	7.5	0	0	0	1	0	0	1009.5	0.5	0.0	1.7	5.0mm precipitation		
25	4	22	05	02	97	20.9	72	24.1	10.8	10.6	16.5	16.7	17.2	17.2	16.8	16.1	10	0	tr	9.5	0	0	0	0	0	0	1021.5	0.0	0.0	2.0	5 2.3		
26	6	17	05	02	97	19.6	80	21.4	12.4	11.5	16.2	16.4	17.2	17.3	16.9	16.1	10	0	2.4	0.5	0	0	0	0	0	0	1018.0	5.0	0.0	1.5	No sunshine		
27	8	25	05	61	96	15.6	90	23.0	13.0	12.5	16.4	16.6	17.3	17.4	16.9	16.1	10	0	0.2	7.0	0	0	0	0	0	0	1011.5	0.6	0.0	2.4	0 1.5		
28	7	20	05	02	97	19.4	65	22.4	11.0	11.0	16.6	16.7	17.3	17.4	17.0	16.1	10	0	1.0	5.8	0	0	0	0	0	0	1017.5	1.5	0.0	2.4	Frequent rain days (0.2mm or		
29	8	18	02	21	97	17.0	84	19.2	14.7	14.5	16.7	16.8	17.4	17.4	17.0	16.1	10	0	5.1	0.9	0	0	0	0	0	0	1013.0	2.2	0.0	1.0	more of rain) but overall the		
30	6	21	05	02	97	17.6	67	19.8	11.4	9.9	15.1	15.6	17.1	17.0	16.8	16.0	10	0	2.2	8.3	0	0	0	0	0	0	1018.0	0.7	0.0	1.9	month was not too wet as most		
31	8	18	21	02	97	17.8	53	22.4	11.1	9.2	15.1	15.5	16.5	16.9	16.8	16.0	10	0	0.5	5.2	0	0	0	0	0	0	1022.0	0.4	0.0	2.7	falls were slight and the wettest		
Monthly means						19.0	71	22.5	13.3	11.9	16.9	17.2	18.0	18.0	17.5	16.2												1012.4				day recorded only 10.8mm.	
Monthly totals																				63.2	167.7							44.8	0.0	64.6	Sunshine amounts and the		
Highest values						25.1		31.1	18.7	17.7	21.1	21.3	21.9	20.6	19.0	16.6			10.8	12.6								9.5	0.0	4.7	temperature were a little		
Lowest values						14.0	50	18.5	9.6	7.9	14.2	15.0	16.5	16.9	16.8	15.7																	disappointing after the first two
1971-2000 monthly climatological averages						74	22.7	13.0	11.0	16.3	16.8	17.7	17.5	16.6	15.3					39.7	193.4								1017.1	29.5	0.0	78.5	days - when 30C was recorded.
																																	Winds from the SW'ly quarter
																																	were unusually frequent.

Key

DD: date

07GMT observations

N	cloud cover (oktas, 9=obscured)	dd	wind direction (degrees/10)
ff	wind speed (knots)		
ww	present weather code		
1	cloud decreasing	25	recent rain shower
2	sky not changing	51	intermittent slight drizzle
3	cloud increasing	60	intermittent slight rain
21	recent rain	80	light rain shower

VV visibility (00-50 metres/100, 94 very poor, 95 poor, 96 moderate, 97 good)

Soil temperatures are for 0700GMT beneath bare soil (5, 10, 20cm) or grass (30, 50, 100cm)

09GMT observations

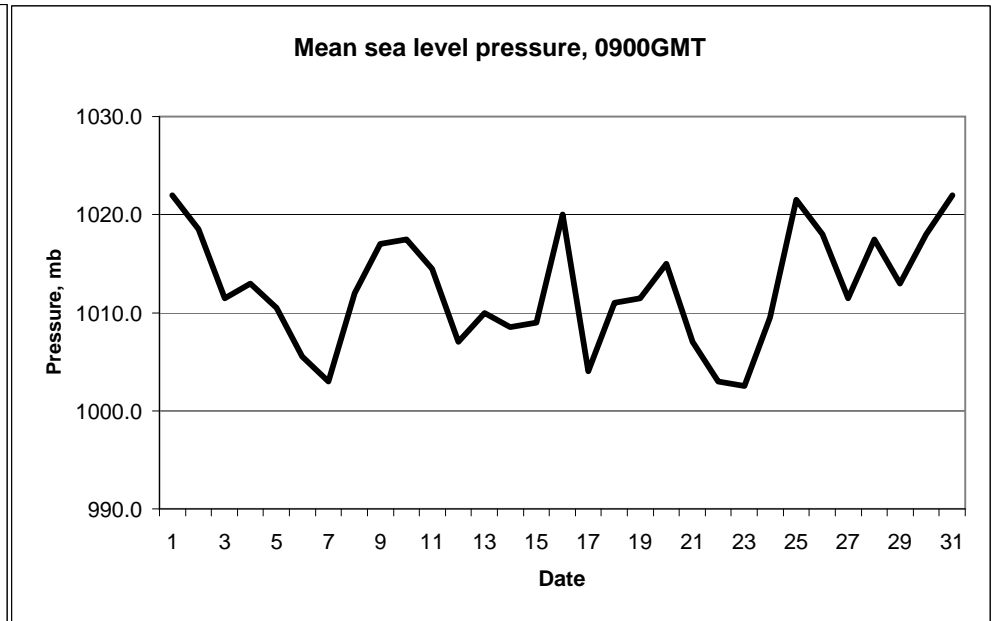
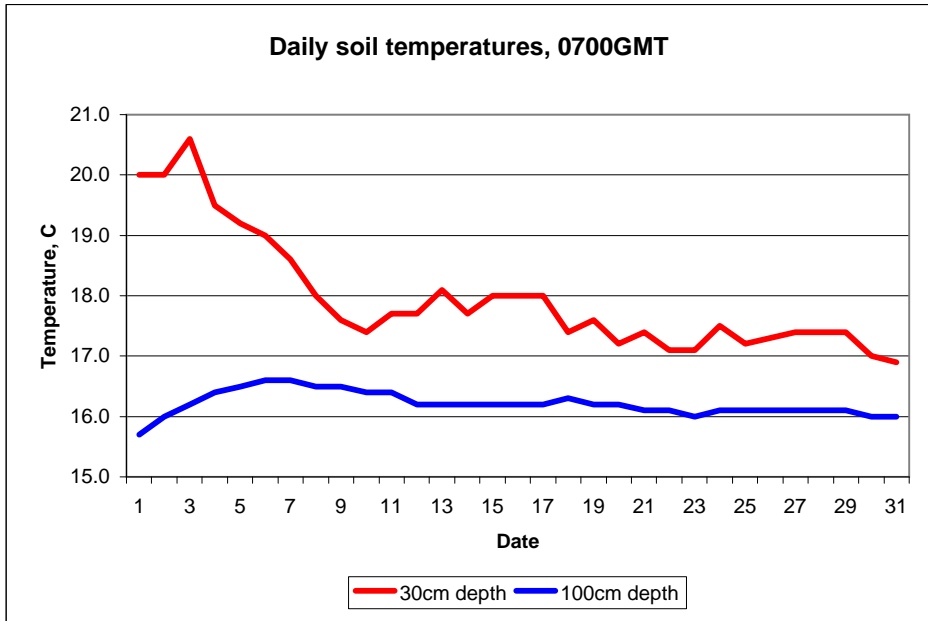
Temp	temperature (degC)	RH	relative humidity (%)
E	state of ground (00 dry, 10 moist, 20 wet, 90 cracked)	SS	snow depth (cm)
Press	air pressure (mb)		

24 hour readings

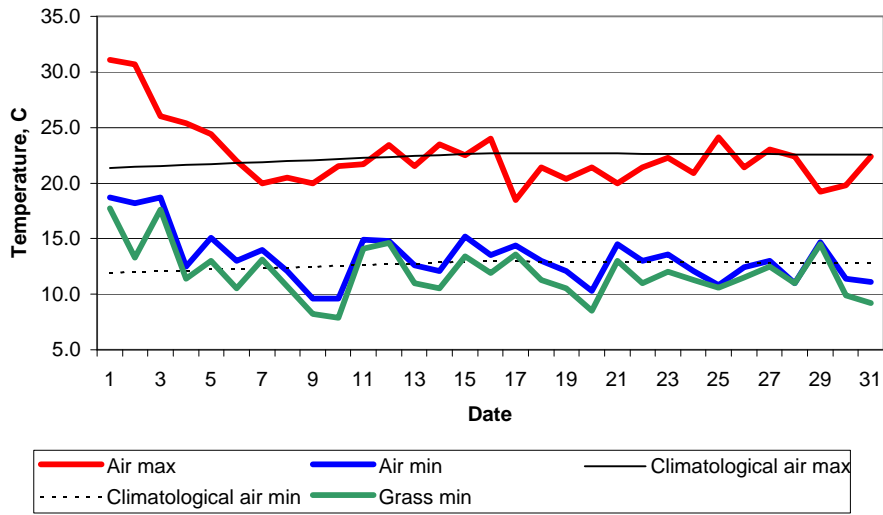
Max	maximum temperature (degC) beginning 09GMT	Min	minimum temperature (degC) ending 09GMT
Gmin	grass minimum temperature (degC) ending 09GMT	Rain	precipitation beginning 09GMT
Sun	sunshine (hours) sunrise-sunset	Rain hrs	hours of rainfall (>0.1mm/h) 09-09GMT
Fr. Hrs	hours of air frost (00-24GMT)	Pch Evap	Piche evaporation (ml) beginning 09GMT

Days with

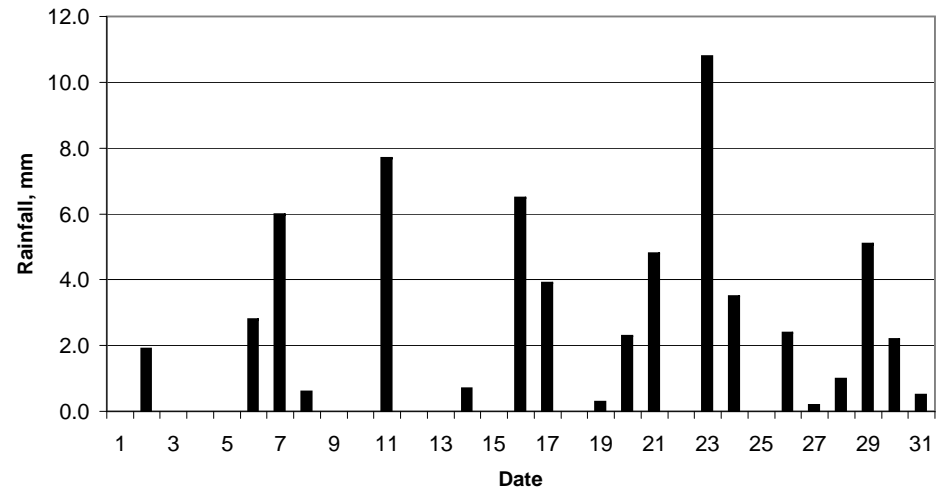
S	snow(5) or sleet(1) falling	L	50% snow cover at 09GMT	H	hail or ice pellets
T	thunder heard	G	gale	F	fog at 09GMT



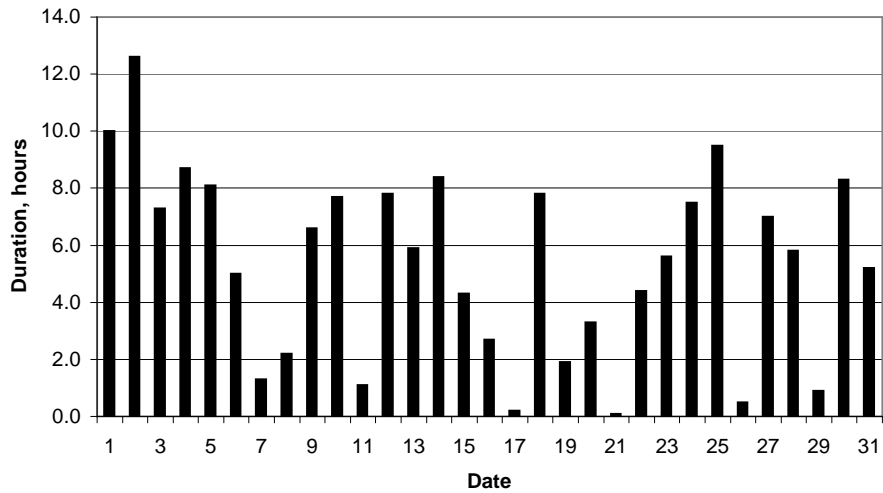
Daily temperature extremes



Daily rainfall



Daily sunshine



Daily evaporation

