

MAIDENHEAD METEOROLOGICAL OBSERVATIONS FOR JULY 2005

| | | 0900GMT | | Temperature | | Soil temperatures (depth in cm) | | | | | | | | | | Rain | | Fr. | | Pch | | | | | | | | | | | | | | |
|---|---|---------|----|-------------|----|---------------------------------|------|------|------|------|------|------|------|------|------|------|----|-----|------|------|-------|-------|---|---|---|---|--------|------|--------|------|----------------------------------|------|--|--|
| DD | N | dd | ff | ww | VV | Temp | RH | Max | Min | Gmin | 5 | 10 | 20 | 30 | 50 | 100 | E | SS | Rain | Sun | S | L | H | T | G | F | Press | hrs | hrs | Evap | | | | |
| 01 | 6 | 16 | 09 | 02 | 97 | 19.4 | 73 | 21.9 | 11.8 | 10.0 | 15.8 | 16.4 | 17.6 | 18.0 | 17.4 | 16.2 | 10 | 0 | 0.4 | 2.0 | 0 | 0 | 0 | 0 | 0 | 0 | 1012.0 | 0.6 | 0.0 | 1.5 | Number of | | | |
| 02 | 8 | 21 | 05 | 21 | 96 | 20.1 | 80 | 21.2 | 15.1 | 14.1 | 18.1 | 18.3 | 18.5 | 18.1 | 17.4 | 16.1 | 10 | 0 | 0.0 | 0.3 | 0 | 0 | 0 | 0 | 0 | 0 | 1016.5 | 0.0 | 0.0 | 1.4 | days with | | | |
| 03 | 6 | 18 | 02 | 02 | 97 | 17.2 | 86 | 19.6 | 11.8 | 10.0 | 16.1 | 16.5 | 17.6 | 17.9 | 17.4 | 16.1 | 10 | 0 | 0.0 | 1.9 | 0 | 0 | 0 | 0 | 0 | 0 | 1015.5 | 0.0 | 0.0 | 1.2 | 2005 normal | | | |
| 04 | 7 | 30 | 05 | 02 | 97 | 15.8 | 64 | 18.0 | 13.0 | 12.5 | 15.3 | 17.8 | 17.2 | 17.5 | 17.0 | 16.1 | 10 | 0 | 2.5 | 2.3 | 0 | 0 | 0 | 0 | 0 | 0 | 1007.0 | 1.6 | 0.0 | 1.3 | Snow/sleet falling | | | |
| 05 | 7 | 19 | 02 | 02 | 97 | 15.8 | 74 | 17.4 | 8.6 | 7.1 | 13.8 | 14.4 | 16.0 | 16.9 | 16.9 | 16.0 | 10 | 0 | 2.4 | 0.1 | 0 | 0 | 0 | 0 | 0 | 0 | 1011.0 | 3.0 | 0.0 | 0.8 | 0 0.0 | | | |
| 06 | 5 | 23 | 09 | 01 | 97 | 17.0 | 77 | 19.3 | 13.9 | 11.2 | 15.5 | 15.5 | 16.1 | 16.6 | 16.4 | 15.9 | 10 | 0 | 0.2 | 5.8 | 0 | 0 | 0 | 0 | 0 | 0 | 1006.5 | 0.4 | 0.0 | 2.2 | 50% snow cover 09GMT | | | |
| 07 | 8 | 27 | 13 | 21 | 97 | 14.9 | 88 | 19.4 | 12.3 | 10.0 | 14.4 | 14.8 | 15.4 | 16.5 | 16.4 | 15.8 | 10 | 0 | 0.7 | 1.7 | 0 | 0 | 0 | 0 | 0 | 0 | 1011.5 | 0.9 | 0.0 | 1.4 | 0 0.0 | | | |
| 08 | 7 | 27 | 04 | 02 | 97 | 15.8 | 73 | 20.1 | 11.8 | 9.2 | 14.4 | 14.7 | 16.0 | 16.1 | 16.0 | 15.8 | 00 | 0 | tr | 4.0 | 0 | 0 | 0 | 0 | 0 | 0 | 1019.0 | 0.0 | 0.0 | 2.1 | Hail or ice pellets | | | |
| 09 | 8 | 25 | 05 | 02 | 97 | 15.7 | 85 | 25.6 | 14.5 | 12.9 | 15.5 | 15.6 | 16.9 | 16.4 | 16.2 | 15.6 | 00 | 0 | 0.0 | 6.2 | 0 | 0 | 0 | 0 | 0 | 0 | 1023.0 | 0.0 | 0.0 | 1.6 | 0 0.2 | | | |
| 10 | 1 | 00 | 00 | 02 | 97 | 25.6 | 55 | 28.9 | 13.6 | 11.4 | 15.8 | 15.8 | 17.5 | 16.5 | 16.3 | 15.6 | 00 | 0 | 0.0 | 14.5 | 0 | 0 | 0 | 0 | 0 | 0 | 1028.5 | 0.0 | 0.0 | 4.4 | Thunder | | | |
| 11 | 7 | 32 | 02 | 02 | 97 | 25.8 | 58 | 27.8 | 18.1 | 14.6 | 18.3 | 18.3 | 20.6 | 17.9 | 17.1 | 15.6 | 00 | 0 | 0.0 | 12.4 | 0 | 0 | 0 | 0 | 0 | 0 | 1029.5 | 0.0 | 0.0 | 4.2 | 0 2.0 | | | |
| 12 | 7 | 05 | 02 | 02 | 96 | 20.1 | 60 | 27.1 | 14.5 | 12.9 | 18.2 | 18.9 | 20.9 | 19.0 | 17.9 | 15.8 | 00 | 0 | 0.0 | 13.7 | 0 | 0 | 0 | 0 | 0 | 0 | 1029.5 | 0.0 | 0.0 | 3.5 | Gale | | | |
| 13 | 2 | 16 | 02 | 02 | 97 | 24.5 | 62 | 30.5 | 15.0 | 12.5 | 18.3 | 18.3 | 21.3 | 19.4 | 18.5 | 16.1 | 00 | 0 | 0.0 | 12.0 | 0 | 0 | 0 | 0 | 0 | 0 | 1024.5 | 0.0 | 0.0 | 3.5 | 0 0.0 | | | |
| 14 | 0 | 18 | 05 | 02 | 97 | 25.6 | 58 | 30.9 | 18.0 | 14.5 | 20.1 | 20.3 | 21.8 | 20.1 | 18.9 | 16.4 | 00 | 0 | 0.0 | 14.4 | 0 | 0 | 0 | 0 | 0 | 0 | 1019.5 | 0.0 | 0.0 | 4.4 | Fog at 09GMT | | | |
| 15 | 7 | 27 | 02 | 03 | 97 | 20.1 | 81 | 27.6 | 15.5 | 12.8 | 19.4 | 19.9 | 21.9 | 20.3 | 19.3 | 16.6 | 00 | 0 | 0.0 | 10.5 | 0 | 0 | 0 | 0 | 0 | 0 | 1013.5 | 0.0 | 0.0 | 3.1 | 0 0.0 | | | |
| 16 | 7 | 32 | 02 | 02 | 97 | 20.0 | 50 | 24.3 | 13.5 | 10.8 | 18.6 | 19.2 | 21.5 | 20.1 | 19.4 | 17.0 | 00 | 0 | 0.0 | 12.9 | 0 | 0 | 0 | 0 | 0 | 0 | 1016.0 | 0.0 | 0.0 | 3.5 | Air frost | | | |
| 17 | 0 | 00 | 00 | 02 | 97 | 22.6 | 50 | 28.9 | 12.3 | 10.2 | 18.3 | 18.7 | 21.2 | 20.0 | 19.5 | 17.1 | 00 | 0 | 0.0 | 13.9 | 0 | 0 | 0 | 0 | 0 | 0 | 1015.5 | 0.0 | 0.0 | 3.8 | 0 0.0 | | | |
| 18 | 1 | 21 | 02 | 02 | 97 | 21.5 | 59 | 25.4 | 14.7 | 11.5 | 19.3 | 19.7 | 22.0 | 20.5 | 19.8 | 17.1 | 00 | 0 | 2.9 | 6.9 | 0 | 0 | 0 | 0 | 0 | 0 | 1008.0 | 0.8 | 0.0 | 2.4 | Ground frost | | | |
| 19 | 0 | 25 | 05 | 01 | 97 | 18.9 | 50 | 22.5 | 12.2 | 10.1 | 16.6 | 17.8 | 19.1 | 20.0 | 19.6 | 17.4 | 10 | 0 | 0.0 | 9.3 | 0 | 0 | 0 | 0 | 0 | 0 | 1014.5 | 0.0 | 0.0 | 3.2 | 0 0.0 | | | |
| 20 | 7 | 27 | 13 | 03 | 97 | 18.9 | 58 | 25.3 | 12.9 | 10.0 | 16.8 | 17.5 | 18.9 | 19.4 | 19.3 | 17.4 | 00 | 0 | 0.0 | 9.4 | 0 | 0 | 0 | 0 | 0 | 0 | 1019.0 | 0.0 | 0.0 | 3.6 | 0.2mm precipitation | | | |
| 21 | 0 | 26 | 05 | 02 | 97 | 20.1 | 56 | 23.6 | 12.0 | 9.2 | 16.6 | 17.6 | 18.9 | 19.5 | 19.2 | 17.4 | 90 | 0 | 0.0 | 14.1 | 0 | 0 | 0 | 0 | 0 | 0 | 1020.5 | 0.0 | 0.0 | 3.2 | 13 10.7 | | | |
| 22 | 8 | 30 | 05 | 02 | 97 | 16.5 | 84 | 21.5 | 12.7 | 10.2 | 17.6 | 18.0 | 19.0 | 19.5 | 19.2 | 17.4 | 90 | 0 | 0.0 | 3.2 | 0 | 0 | 0 | 0 | 0 | 0 | 1017.0 | 0.0 | 0.0 | 1.8 | 1.0mm precipitation | | | |
| 23 | 8 | 25 | 02 | 02 | 97 | 18.2 | 79 | 22.1 | 16.0 | 12.1 | 18.3 | 17.4 | 18.6 | 18.4 | 18.9 | 17.3 | 90 | 0 | 1.4 | 0.4 | 0 | 0 | 0 | 0 | 0 | 0 | 1009.5 | 3.0 | 0.0 | 1.7 | 9 7.5 | | | |
| 24 | 8 | 09 | 05 | 60 | 97 | 16.8 | 93 | 20.6 | 15.5 | 12.9 | 18.3 | 17.3 | 18.5 | 18.7 | 18.7 | 17.2 | 10 | 0 | 12.6 | 3.0 | 0 | 0 | 0 | 0 | 0 | 0 | 1003.0 | 10.5 | 0.0 | 1.4 | 5.0mm precipitation | | | |
| 25 | 8 | 18 | 02 | 61 | 95 | 16.6 | 95 | 17.2 | 15.8 | 15.4 | 17.4 | 16.9 | 18.0 | 18.3 | 18.1 | 17.1 | 10 | 0 | 0.0 | 0.1 | 0 | 0 | 0 | 0 | 0 | 0 | 1000.0 | 0.0 | 0.0 | 0.6 | 3 2.3 | | | |
| 26 | 7 | 04 | 02 | 02 | 97 | 16.7 | 70 | 19.9 | 13.6 | 13.1 | 15.8 | 16.2 | 17.1 | 17.6 | 17.7 | 17.1 | 10 | 0 | 5.1 | 0.1 | 0 | 0 | 0 | 0 | 0 | 0 | 1011.5 | 9.5 | 0.0 | 2.5 | No sunshine | | | |
| 27 | 8 | 03 | 09 | 51 | 94 | 12.7 | 97 | 17.0 | 12.6 | 13.1 | 15.5 | 16.2 | 17.1 | 17.6 | 17.3 | 17.1 | 10 | 0 | 1.4 | 0.0 | 0 | 0 | 0 | 0 | 0 | 0 | 1009.0 | 4.7 | 0.0 | 0.1 | 1 1.5 | | | |
| 28 | 8 | 08 | 02 | 46 | 06 | 17.0 | 98 | 24.7 | 12.7 | 13.4 | 16.3 | 16.3 | 16.6 | 17.0 | 17.2 | 16.9 | 10 | 0 | 0.2 | 5.9 | 0 | 0 | 0 | 0 | 0 | 0 | 1007.5 | 0.3 | 0.0 | 2.1 | A cool start and end, but | | | |
| 29 | 7 | 21 | 09 | 02 | 97 | 18.0 | 68 | 21.2 | 14.1 | 11.9 | 16.3 | 16.7 | 17.5 | 17.6 | 17.2 | 16.7 | 10 | 0 | 0.0 | 2.3 | 0 | 0 | 0 | 0 | 0 | 0 | 1010.0 | 0.0 | 0.0 | 2.3 | some hot days mid-month. | | | |
| 30 | 8 | 20 | 02 | 02 | 97 | 17.6 | 84 | 21.1 | 11.5 | 10.0 | 16.2 | 16.4 | 17.2 | 17.6 | 17.3 | 16.6 | 10 | 0 | 9.1 | 1.7 | 0 | 0 | 0 | 0 | 0 | 0 | 1011.0 | 4.3 | 0.0 | 1.1 | Very little rain until the 24th, | | | |
| 31 | 8 | 27 | 02 | 02 | 97 | 15.6 | 86 | 20.0 | 14.0 | 13.1 | 16.7 | 16.8 | 17.3 | 17.6 | 17.2 | 16.6 | 10 | 0 | 2.7 | 0.2 | 0 | 0 | 0 | 0 | 0 | 0 | 1012.5 | 3.0 | 0.0 | 1.5 | then rather unsettled and | | | |
| Monthly means | | | | | | 18.7 | 73 | 22.9 | 13.7 | 11.7 | 16.9 | 17.2 | 18.5 | 18.3 | 17.9 | 16.6 | | | | | | | | | | | 1014.6 | | | | with little sunshine during | | | |
| Monthly totals | | | | | | | | | | | | | | | | | | | | 41.6 | 185.2 | | | | | | | 42.6 | 0.0 | 71.4 | the final ten days. No | | | |
| Highest values | | | | | | 25.8 | | 30.9 | 18.1 | 15.4 | 20.1 | 20.3 | 22.0 | 20.5 | 19.8 | 17.4 | | | | 12.6 | 14.5 | | | | | | | 10.5 | 0.0 | 4.4 | thunder heard during the | | | |
| Lowest values | | | | | | 12.7 | 50 | 17.0 | 8.6 | 7.1 | 13.8 | 14.4 | 15.4 | 16.1 | 16.0 | 15.6 | | | | | | | | | | | | | | | | | | |
| 1971-2000 monthly climatological averages | | | | | | 74 | 22.7 | 13.0 | 11.0 | 16.3 | 16.8 | 17.7 | 17.5 | 16.6 | 15.3 | | | | | | 39.7 | 193.4 | | | | | | | 1017.1 | 29.5 | 0.0 | 78.5 | | |

Key

DD: date

07GMT observations

| | | | |
|----|---------------------------------|----|-----------------------------|
| N | cloud cover (oktas, 9=obscured) | dd | wind direction (degrees/10) |
| ff | wind speed (knots) | | |
| ww | present weather code | | |
| 1 | cloud decreasing | 46 | fog |
| 2 | sky not changing | 51 | intermittent slight drizzle |
| 3 | cloud increasing | 60 | intermittent slight rain |
| 21 | recent rain | 61 | continuous light rain |

VV visibility (00-50 metres/100, 94 very poor, 95 poor, 96 moderate, 97 good)

Soil temperatures are for 0700GMT beneath bare soil (5, 10, 20cm) or grass (30, 50, 100cm)

09GMT observations

| | | | |
|-------|--|----|-----------------------|
| Temp | temperature (degC) | RH | relative humidity (%) |
| E | state of ground (00 dry, 10 moist, 20 wet, 90 cracked) | SS | snow depth (cm) |
| Press | air pressure (mb) | | |

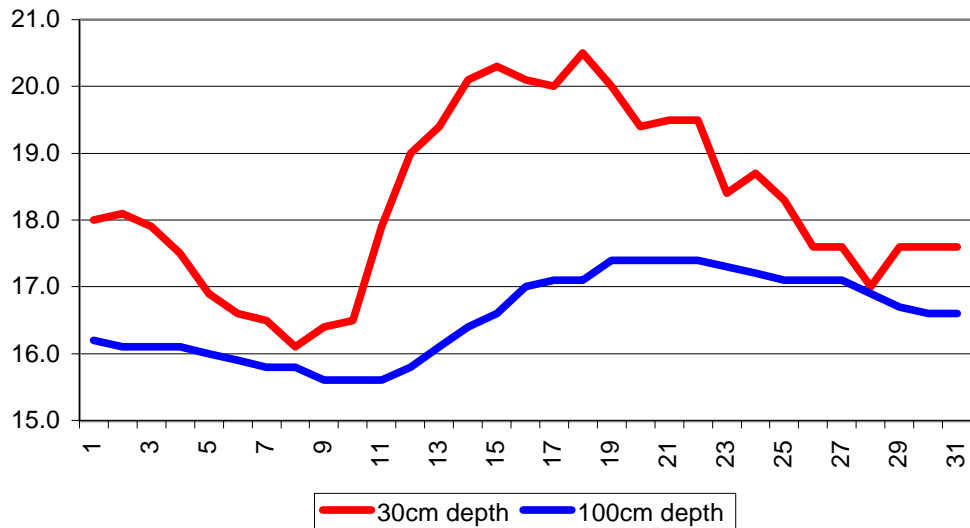
24 hour readings

| | | | |
|---------|---|----------|---|
| Max | maximum temperature (degC) beginning 09GMT | Min | minimum temperature (degC) ending 09GMT |
| Gmin | grass minimum temperature (degC) ending 09GMT | Rain | precipitation beginning 09GMT |
| Sun | sunshine (hours) sunrise-sunset | Rain hrs | hours of rainfall (>0.1mm/h) 09-09GMT |
| Fr. Hrs | hours of air frost (00-24GMT) | Pch Evap | Piche evaporation (ml) beginning 09GMT |

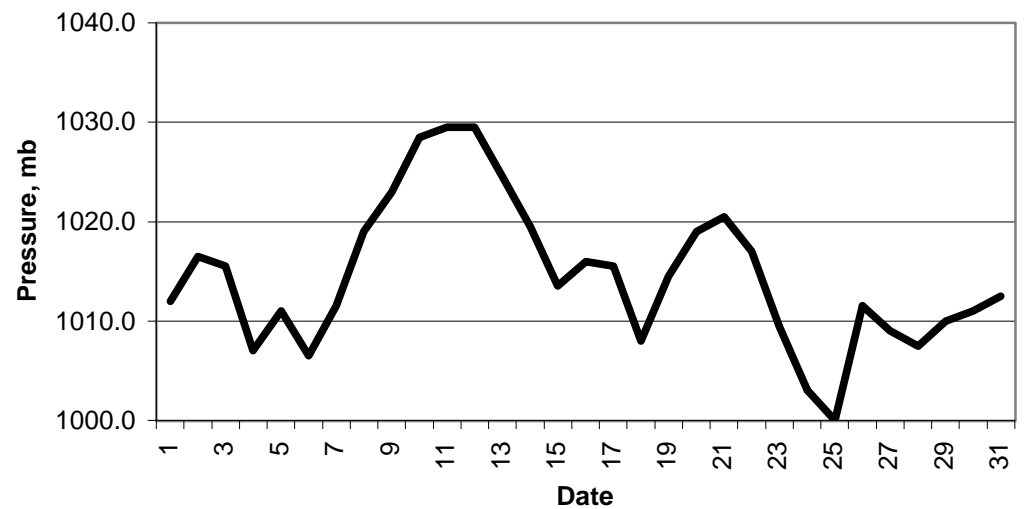
Days with

| | | | | | |
|---|-----------------------------|---|-------------------------|---|---------------------|
| S | snow(5) or sleet(1) falling | L | 50% snow cover at 09GMT | H | hail or ice pellets |
| T | thunder heard | G | gale | F | fog at 09GMT |

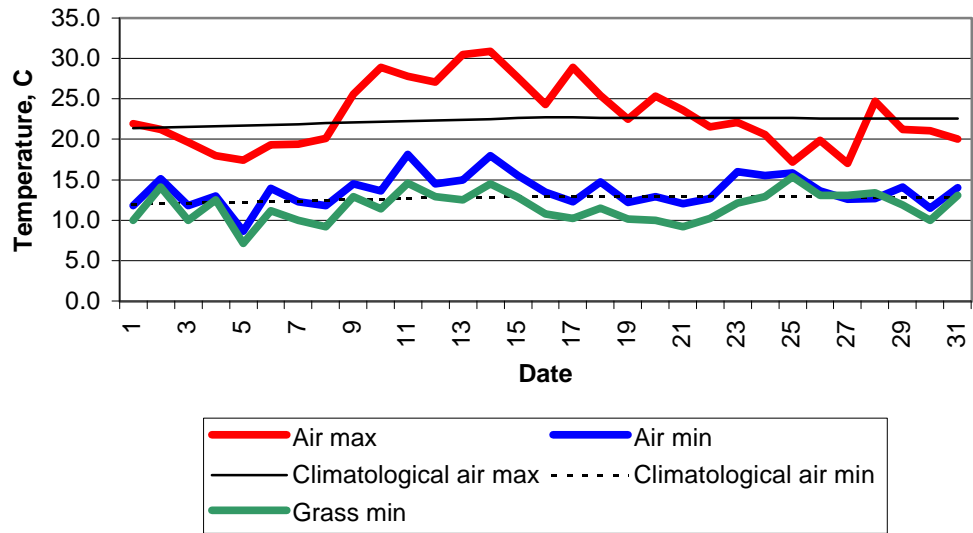
Daily soil temperatures, 0700GMT



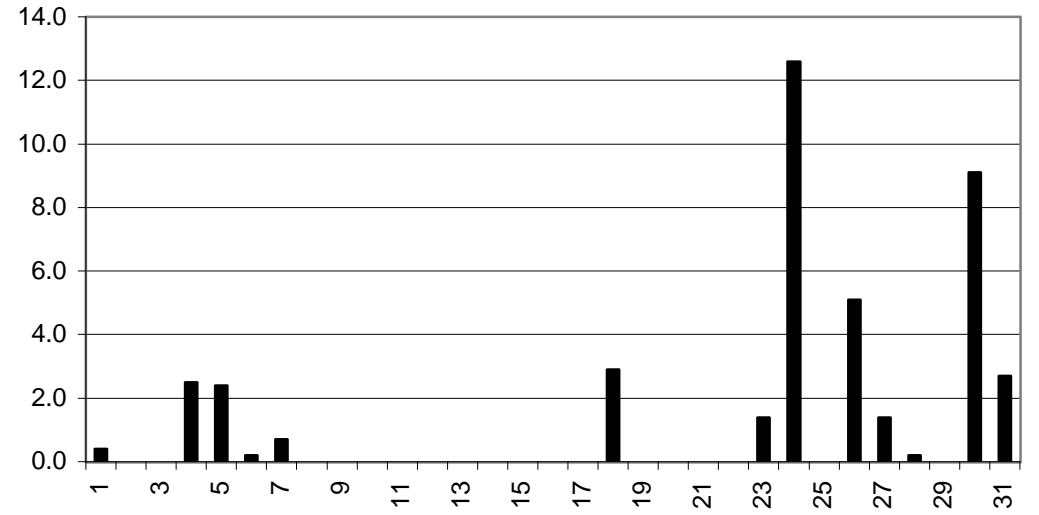
Mean sea level pressure, 0900GMT



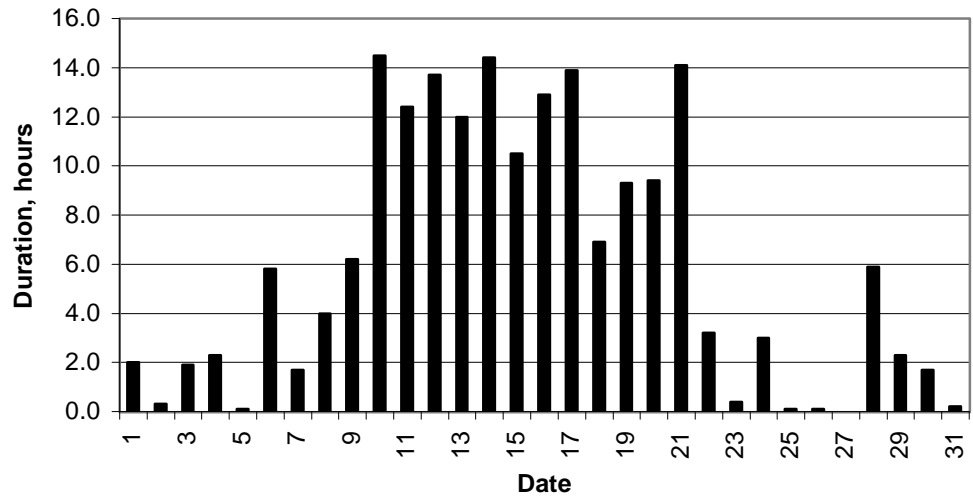
Daily temperature extremes



Daily rainfall



Daily sunshine



Daily evaporation

