

MAIDENHEAD METEOROLOGICAL OBSERVATIONS FOR JANUARY 2020

DD	N	dd	ff	ww	VV	0900GMT		Temperature			Soil temperatures (depth in cm)						E	SS	Rain	Sun	S	L	H	T	G	F	Press	Rain hrs	Fr. hrs	Pch Evap						
						Temp	RH	Max	Min	Gmin	5	10	20	30	50	100																				
01	8	00	00	02	94	5.2	87	7.9	4.8	-1.3	6.1	6.1	6.7	7.2	7.2	8.3	10	0	0.1	0.7	0	0	0	0	0	0	1030.0	0.2	0.0	0.0	Number of					
02	8	18	02	50	94	7.9	90	11.1	5.2	4.5	6.8	6.7	7.0	7.2	7.2	8.3	10	0	2.3	0.0	0	0	0	0	0	0	1023.0	7.0	0.0	0.9	days with					
03	8	27	05	21	97	9.9	91	9.9	7.9	6.1	9.0	8.3	8.1	7.8	7.5	8.3	20	0	tr	3.6	0	0	0	0	0	0	1017.5	0.0	0.0	0.7	2020 normal					
04	8	27	02	02	97	5.2	85	8.6	3.1	-1.5	5.0	5.0	6.1	7.3	7.5	8.4	10	0	tr	2.1	0	0	0	0	0	0	1034.0	0.0	0.0	0.6	Snow/sleet falling					
05	7	23	02	02	97	6.3	89	8.9	5.2	2.0	6.1	6.1	6.6	7.2	7.3	8.4	10	0	0.0	0.1	0	0	0	0	0	0	1034.0	0.0	0.0	1.6	0					
06	8	18	05	02	97	7.2	71	9.1	6.3	4.0	6.6	6.6	7.1	7.3	7.2	8.3	10	0	0.6	0.2	0	0	0	0	0	0	1022.0	0.3	0.0	0.6	50% snow cover 09GMT					
07	7	23	02	02	97	7.7	93	12.9	3.3	-1.3	5.1	5.0	6.1	7.1	7.4	8.3	10	0	0.1	1.0	0	0	0	0	0	0	1023.5	0.2	0.0	0.6	0					
08	7	27	02	02	97	10.4	82	12.8	7.7	5.0	8.4	8.2	8.3	7.8	7.4	8.3	10	0	1.1	0.0	0	0	0	0	0	0	1022.5	3.0	0.0	0.6	Hail or ice pellets					
09	6	23	09	02	97	11.3	78	13.0	9.7	6.2	9.0	8.9	8.8	8.2	7.7	8.4	10	0	6.6	3.3	0	0	0	0	0	0	1007.0	1.7	0.0	0.8	0					
10	8	31	05	02	97	5.7	78	9.7	5.1	2.0	6.6	6.7	7.7	8.3	8.0	8.5	10	0	tr	3.3	0	0	0	0	0	0	1023.5	0.0	0.0	0.5	Thunder					
11	8	23	05	02	97	9.6	78	11.0	2.3	-2.1	7.0	6.6	6.9	7.6	7.7	8.6	10	0	4.3	0.1	0	0	0	0	0	0	1025.0	6.2	0.0	1.1	0					
12	7	23	05	81	96	10.1	87	11.2	9.6	7.9	8.4	8.2	8.1	8.2	7.7	8.6	10	0	0.6	4.3	0	0	0	0	0	0	1015.5	0.8	0.0	0.6	Gale					
13	7	18	05	60	97	6.5	93	10.9	1.9	-1.9	5.1	5.1	6.5	7.6	7.8	8.6	10	0	4.5	1.3	0	0	0	0	0	0	1012.0	5.5	0.0	0.7	0					
14	8	23	05	02	97	8.0	84	13.2	6.5	2.9	6.1	6.4	7.2	7.7	7.6	8.6	10	0	15.4	0.0	0	0	0	0	0	0	1008.5	15.0	0.0	0.7	Fog at 09GMT					
15	8	23	05	60	97	6.6	89	9.8	6.6	3.6	8.3	8.3	8.6	8.3	7.8	8.5	20	0	tr	3.4	0	0	0	0	0	0	1004.5	0.0	0.0	0.5	1					
16	7	18	02	02	97	6.4	90	12.0	3.5	-1.2	5.5	5.6	6.8	7.9	8.0	8.6	20	0	15.5	0.6	0	0	0	0	0	0	1017.0	7.9	0.0	0.7	Air frost					
17	5	23	05	01	97	7.7	89	8.8	6.4	2.5	7.7	7.1	8.1	8.0	7.8	8.6	20	0	tr	2.4	0	0	0	0	0	0	1009.5	0.0	0.0	0.5	5					
18	1	00	00	02	97	-1.7	88	7.4	-1.9	-5.2	2.8	3.6	5.5	7.4	7.7	8.6	40	0	0.0	5.7	0	0	0	0	0	0	1027.0	0.0	7.1	0.2	Ground frost					
19	0	00	00	02	97	-2.8	82	6.8	-3.0	-5.8	1.9	2.3	4.3	6.4	7.0	8.5	40	0	0.0	6.5	0	0	0	0	0	0	1044.5	0.0	12.5	0.2	14					
20	7	23	02	02	97	0.5	89	6.0	-2.8	-6.5	2.4	2.6	3.8	5.5	6.3	8.3	40	0	0.0	4.3	0	0	0	0	0	0	1049.0	0.0	8.4	0.3	0.2mm precipitation					
21	7	23	02	02	96	-2.0	88	6.7	-3.2	-5.5	1.7	1.7	3.2	5.1	5.9	8.1	40	0	tr	5.9	0	0	0	0	0	0	1043.5	0.0	9.9	0.3	14					
22	8	31	02	41	09	5.1	92	8.2	-2.0	-3.4	3.7	2.8	3.7	4.9	5.5	7.8	10	0	0.3	0.0	0	0	0	0	0	1	1038.0	1.0	0.0	0.2	1.0mm precipitation					
23	8	09	02	02	95	6.8	89	7.9	5.1	2.7	5.5	5.3	5.4	5.6	5.6	7.6	10	0	0.1	0.0	0	0	0	0	0	0	1033.5	0.2	0.0	0.1	9					
24	8	31	02	20	95	5.9	90	7.1	5.7	4.5	5.6	5.6	6.0	6.0	6.0	7.5	10	0	tr	0.0	0	0	0	0	0	0	1024.5	0.0	0.0	0.3	5.0mm precipitation					
25	8	18	02	02	96	5.7	84	8.2	5.5	4.2	5.6	5.5	6.0	6.3	6.1	7.5	10	0	0.1	0.0	0	0	0	0	0	0	1020.0	1.0	0.0	0.5	4					
26	7	18	05	25	95	8.0	88	10.2	5.7	0.2	6.2	6.1	6.2	6.4	6.4	7.5	10	0	2.9	0.1	0	0	0	0	0	0	1011.0	2.2	0.0	0.4	No sunshine					
27	6	23	02	01	97	6.4	87	9.5	6.7	2.0	6.1	5.9	6.5	6.8	6.6	7.6	10	0	7.6	1.0	0	0	0	0	0	0	1002.5	4.0	0.0	0.6	9					
28	0	23	09	01	97	2.6	84	7.7	2.1	-1.0	3.9	4.1	5.6	6.6	6.7	7.7	10	0	0.1	5.1	0	0	0	0	0	0	996.5	0.1	0.0	1.1	The mildest January					
29	1	18	02	02	97	1.9	84	9.1	0.3	-4.2	2.2	2.6	4.4	6.0	6.4	7.7	40	0	tr	5.6	0	0	0	0	0	0	1009.5	0.0	0.0	1.5	since 2007 and 2008					
30	8	18	02	02	97	8.8	88	12.3	1.9	-0.6	5.9	5.5	5.5	5.9	6.1	7.6	10	0	0.5	0.0	0	0	0	0	0	0	1005.0	1.0	0.0	0.7	and the fewest days with					
31	8	23	05	02	06	9.7	90	12.0	8.8	4.5	7.3	7.2	7.0	6.8	6.4	7.5	10	0	0.3	0.0	0	0	0	0	0	0	1008.5	1.7	0.0	0.7	air frost since the same					
Monthly means						6.0	86	9.7	4.0	0.8	5.7	5.7	6.4	7.0	7.0	8.2																	two January months. In			
Monthly totals																																	the last 20 years only			
Highest values																																	2002, 2012, 2014 and			
Lowest values																																		2020 were snow-free.		
1981-2010 monthly climatological averages																																		Rainfall and sunshine		
																																		each totalled above		
																																			average, while air	
																																			pressure on the 20th	
																																				was the highest locally
																																				for over 100 years.

Key

DD: date

07GMT observations

N cloud cover (oktas, 9=obscured)                      dd wind direction (degrees/10)  
ff wind speed (knots)  
ww present weather code  
1 cloud decreasing    50 intermittent slight drizzle  
2 sky not changing    60 intermittent slight rain  
3 cloud increasing    61 continuous slight rain  
5 haze    63 continuous moderate rain  
10 mist    80 slight rain shower  
21 recent rain

VV visibility (00-50 metres/100, 94 very poor, 95 poor, 96 moderate, 97 good)

Soil temperatures are for 0700GMT beneath bare soil (5, 10, 20cm) or grass (30, 50, 100cm)

09GMT observations

Temp temperature (degC)                                      RH relative humidity (%)  
E state of ground (X1, X2 and X3 snow, 10 moist, 20 wet, 40 frozen)      SS snow depth (cm)  
Press air pressure (mb)

24 hour readings

Max maximum temperature (degC) beginning 09GMT                      Min minimum temperature (degC) ending 09GMT  
Gmin grass minimum temperature (degC) ending 09GMT                      Rain precipitation beginning 09GMT  
Sun sunshine (hours) sunrise-sunset                                      Rain hrs hours of rainfall (>0.1mm/h) 09-09GMT  
Fr. Hrs hours of air frost (00-24GMT)                                      Pch Evap Piche evaporation (ml) beginning 09GMT

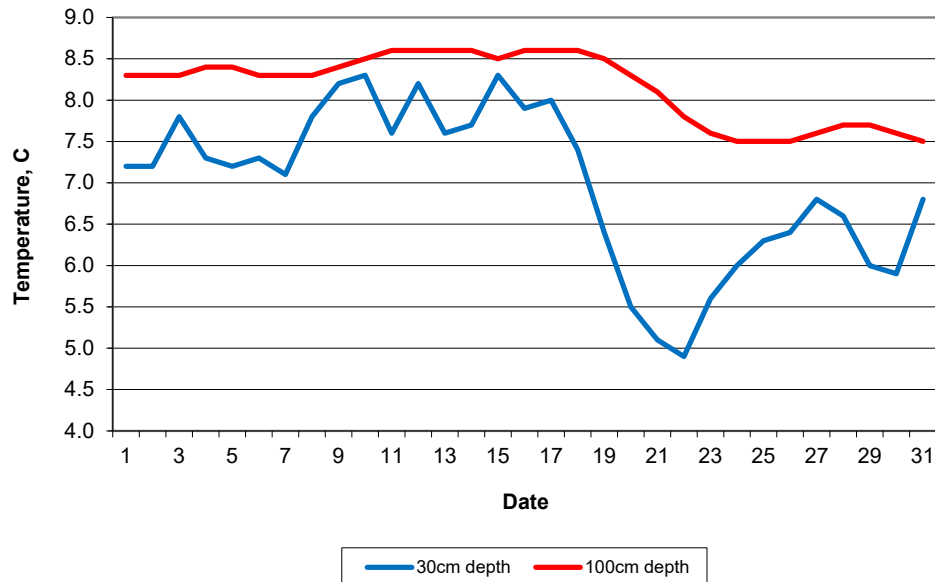
Days with

S snow(5) or sleet(1) falling                                      L 50% snow cover at 09GMT                                      H hail or ice pellets  
T thunder heard    G gale    F fog at 09GMT

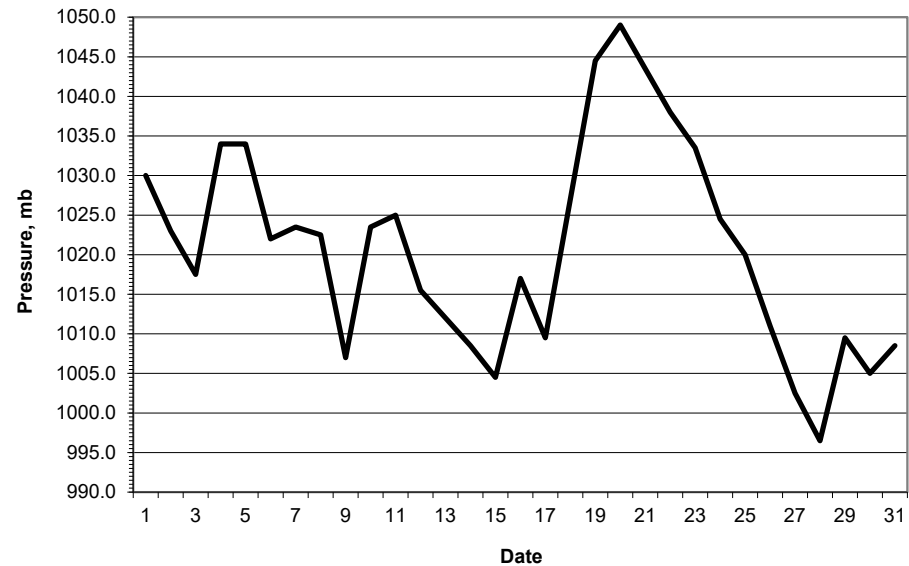
This information (and data for earlier months) is also available at

<http://www.met.reading.ac.uk/~brugge>

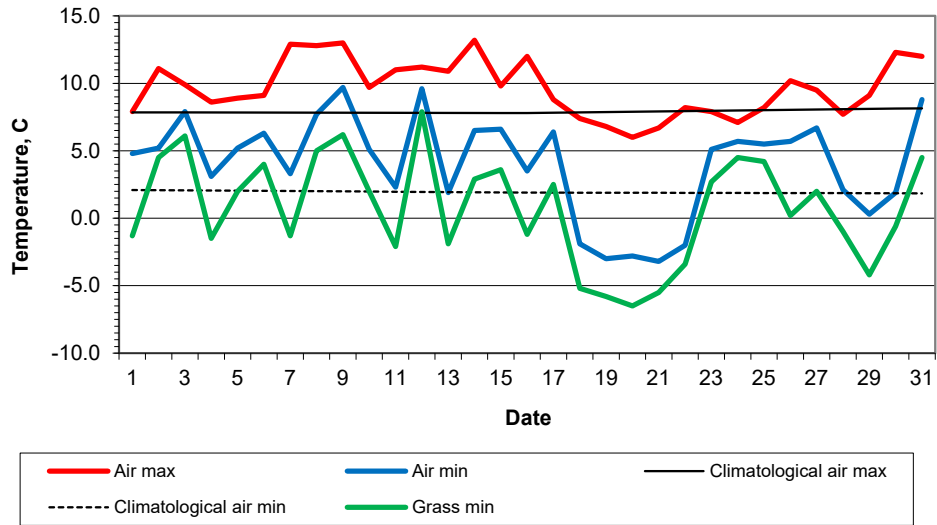
Daily soil temperatures, 0700GMT



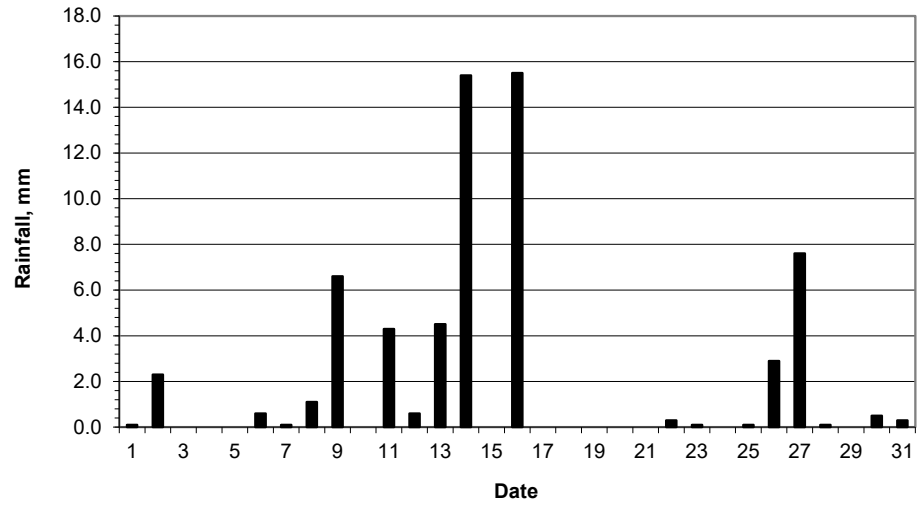
Mean sea level pressure, 0900GMT



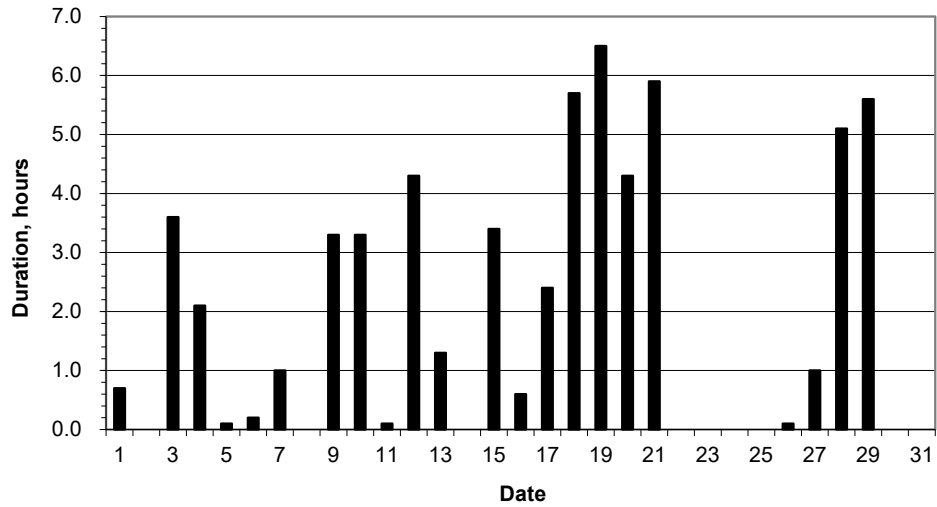
### Daily temperature extremes



### Daily rainfall



### Daily sunshine



### Daily evaporation

