

MAIDENHEAD METEOROLOGICAL OBSERVATIONS FOR JANUARY 2019

DD	N	dd	ff	ww	VV	0900GMT		Temperature				Soil temperatures (depth in cm)						E	SS	Rain	Sun	S	L	H	T	G	F	Press	Rain hrs	Fr. hrs	Pch Evap	
						Temp	RH	Max	Min	Gmin	5	10	20	30	50	100																
01	8	27	02	02	97	7.8	81	10.1	5.7	1.0	7.0	7.1	7.7	8.1	7.9	8.7	10	0	tr	0.7	0	0	0	0	0	0	1034.5	0.0	0.0	0.7	Number of days with 2019 normal Snow/sleet falling 5 2.9 50% snow cover 09GMT 1 1.5 Hail or ice pellets 2 0.3 Thunder 0 0.4 Gale 0 0.3 Fog at 09GMT 1 1.8 Air frost 14 9.1 Ground frost 20 17.8 0.2mm precipitation 9 16.0 1.0mm precipitation 6 11.7 5.0mm precipitation 5 4.5 No sunshine 13 11.9 Slightly cooler and duller than normal, but a dry month. Almost no precipitation in the first half of the month but some snowfall in the final ten days. The driest January since 2006 with a general fall in air pressure during the month. Precipitation on the 12th was the first measurable fall for 17 days.	
02	8	31	02	02	97	4.3	71	6.0	2.0	-3.2	5.4	5.4	6.8	7.8	7.8	8.8	10	0	0.0	0.0	0	0	0	0	0	1043.5	0.0	0.0	1.0			
03	8	36	02	02	97	4.0	64	4.8	3.9	2.4	5.2	5.3	6.3	7.1	7.5	8.7	10	0	0.0	0.0	0	0	0	0	0	1043.5	0.0	0.0	0.8			
04	1	00	00	02	96	-0.6	75	4.1	-0.7	-3.8	3.7	4.3	5.9	6.8	7.2	8.7	10	0	0.0	6.1	0	0	0	0	0	1043.5	0.0	1.3	0.9			
05	8	31	02	02	97	4.1	73	6.1	-0.6	-4.1	4.4	4.4	5.2	6.2	6.7	8.6	10	0	0.0	0.0	0	0	0	0	0	1039.5	0.0	0.0	0.5			
06	8	27	02	02	97	6.1	80	9.7	4.1	3.2	5.4	5.1	5.8	6.3	6.6	8.4	10	0	0.0	0.5	0	0	0	0	0	1037.0	0.0	0.0	0.6			
07	8	27	02	02	97	8.0	79	10.9	6.1	2.6	6.6	6.3	6.7	6.8	6.7	8.3	10	0	tr	0.0	0	0	0	0	0	1034.0	0.0	0.0	1.1			
08	2	31	02	01	97	5.3	78	8.9	5.2	1.9	5.1	5.3	6.6	7.2	7.1	8.2	10	0	0.0	5.5	0	0	0	0	0	1028.0	0.0	0.0	1.3			
09	1	31	05	10	97	2.6	71	5.8	2.4	-1.2	3.3	3.3	5.1	6.4	6.8	8.3	10	0	0.0	3.9	0	0	0	0	0	1030.0	0.0	0.0	0.8			
10	8	31	02	05	96	0.9	84	7.1	-0.6	-2.4	2.7	2.7	4.1	5.7	6.3	8.2	10	0	tr	0.0	0	0	0	0	0	1032.0	0.0	1.1	0.7			
11	8	31	02	02	96	5.9	86	8.9	0.9	0.7	5.3	5.1	5.5	6.0	6.2	8.1	10	0	0.0	0.0	0	0	0	0	0	1031.0	0.0	0.0	0.8			
12	7	27	05	02	97	8.9	80	10.6	5.8	-0.6	6.2	5.8	6.0	6.4	6.4	7.9	10	0	0.1	0.0	0	0	0	0	0	1024.5	0.4	0.0	1.1			
13	8	27	05	02	97	10.0	74	12.0	8.8	6.3	7.3	6.8	6.9	5.9	6.7	7.9	10	0	tr	1.0	0	0	0	0	0	1015.5	0.0	0.0	1.8			
14	8	31	05	02	97	7.2	69	9.5	7.0	2.6	5.6	5.6	7.1	7.1	7.0	8.0	10	0	tr	0.7	0	0	0	0	0	1020.5	0.0	0.0	1.3			
15	8	22	02	02	97	5.2	87	8.8	0.2	-3.8	4.4	4.4	5.6	5.8	6.9	8.0	10	0	0.3	0.0	0	0	0	0	0	1021.0	1.5	0.0	0.5			
16	8	22	05	21	97	8.8	89	9.8	5.2	4.0	7.2	6.8	6.9	7.0	6.8	8.0	10	0	5.5	0.0	0	0	0	0	0	1007.0	4.3	0.0	0.3			
17	8	31	09	26	96	1.4	83	5.0	1.4	-1.4	4.4	4.8	6.0	6.9	7.0	8.1	10	0	0.0	6.4	5	0	0	0	0	1011.5	0.0	5.2	0.6			
18	6	00	00	02	97	-1.4	85	6.7	-2.2	-4.6	1.7	2.1	3.4	5.7	6.4	8.0	40	0	0.1	0.8	0	0	0	0	0	1018.0	0.2	9.8	1.1			
19	8	13	02	02	97	3.0	83	5.2	-1.4	-4.1	3.7	3.4	4.4	5.4	5.9	7.9	10	0	tr	0.0	0	0	0	0	0	1010.0	0.0	0.0	0.4			
20	7	09	02	05	96	0.3	86	5.7	-2.1	-5.9	2.4	2.3	4.2	5.5	5.8	7.7	10	0	0.0	5.7	0	0	0	0	0	1017.5	0.0	6.2	0.4			
21	8	36	02	05	96	1.9	81	6.0	-0.3	-3.9	3.2	2.8	3.8	4.9	5.5	7.6	10	0	5.0	0.0	0	0	0	0	0	1025.0	3.0	0.0	0.3			
22	2	27	02	01	97	0.3	85	6.7	-0.1	-3.5	2.6	2.8	4.4	5.1	5.5	7.4	10	0	5.0	3.2	5	0	4	0	0	1004.5	3.2	2.5	0.2			
23	1	36	05	02	97	0.8	86	2.7	-1.6	-2.9	2.1	2.1	3.3	4.7	5.3	7.3	X4	2	0.0	3.7	5	1	0	0	0	1002.5	0.0	11.1	0.1			
24	7	22	02	03	96	-1.5	88	4.9	-3.5	-5.1	1.1	1.2	2.7	4.1	4.8	7.1	X1	1	0.9	0.0	0	0	0	0	0	1012.0	1.9	10.3	0.1			
25	8	22	02	10	94	4.9	93	11.5	-1.5	-2.9	3.3	2.8	3.4	4.1	4.6	7.0	10	0	0.1	1.8	0	0	0	0	0	1014.5	0.2	0.0	0.4			
26	8	22	05	02	97	7.3	86	10.4	4.9	1.0	5.0	4.6	4.9	4.9	4.9	6.8	10	0	3.5	0.5	0	0	0	0	0	1008.5	4.2	0.0	0.8			
27	8	31	09	60	97	4.0	78	6.6	3.8	3.0	5.1	5.1	5.7	5.7	5.5	6.8	10	0	0.5	2.8	0	0	4	0	0	993.0	0.3	0.0	1.3			
28	0	13	05	02	97	0.5	75	6.1	0.5	-3.5	1.7	1.8	3.8	5.2	5.5	6.9	10	0	0.0	6.6	0	0	0	0	0	1006.0	0.0	5.3	0.9			
29	7	00	00	03	97	-0.2	83	6.0	-3.0	-6.8	1.3	1.3	2.9	4.3	5.0	6.9	40	0	6.2	0.0	5	0	0	0	0	1002.5	4.5	9.1	0.2			
30	0	00	00	02	97	-1.8	86	5.7	-2.2	-6.0	1.3	1.4	3.0	4.2	4.8	6.8	40	0	0.0	5.2	0	0	0	0	0	997.0	0.0	11.2	0.1			
31	9	09	02	43	06	-3.6	82	3.7	-5.4	-7.6	0.8	1.0	2.4	3.8	4.4	6.6	40	0	7.4	1.4	5	0	0	0	1	995.0	6.5	10.7	0.7			
Monthly means						3.4	81	7.3	1.4	-1.6	4.0	4.0	5.0	5.8	6.2	7.8												1019.4				
Monthly totals																						34.6	56.5						30.2	83.8	21.8	
Highest values						10.0		12.0	8.8	6.3	7.3	7.1	7.7	8.1	7.9	8.8					7.4	6.6						6.5	11.2	1.8		
Lowest values						-3.6	64	2.7	-5.4	-7.6	0.8	1.0	2.4	3.8	4.4	6.6																
1981-2010 monthly climatological averages							90	7.8	1.9	-0.8	3.8	3.8	4.6	5.3	5.4	6.7					61.0	57.5						1017.1	62.2	87.2	23.7	

Key

DD: date

07GMT observations

N cloud cover (oktas, 9=obscured) dd wind direction (degrees/10)  
 ff wind speed (knots)  
 ww present weather code  
 1 cloud decreasing 50 intermittent slight drizzle  
 2 sky not changing 60 intermittent slight rain  
 3 cloud increasing 61 continuous slight rain  
 5 haze 63 continuous moderate rain  
 10 mist 80 slight rain shower  
 21 recent rain  
 VV visibility (00-50 metres/100, 94 very poor, 95 poor, 96 moderate, 97 good)  
 Soil temperatures are for 0700GMT beneath bare soil (5, 10, 20cm) or grass (30, 50, 100cm)

09GMT observations

Temp temperature (degC) RH relative humidity (%)  
 E state of ground (X1, X2 and X3 snow, 10 moist, 20 wet, 40 frozen) SS snow depth (cm)  
 Press air pressure (mb)

24 hour readings

Max maximum temperature (degC) beginning 09GMT Min minimum temperature (degC) ending 09GMT  
 Gmin grass minimum temperature (degC) ending 09GMT Rain precipitation beginning 09GMT  
 Sun sunshine (hours) sunrise-sunset Rain hrs hours of rainfall (>0.1mm/h) 09-09GMT  
 Fr. Hrs hours of air frost (00-24GMT) Pch Evap Piche evaporation (ml) beginning 09GMT

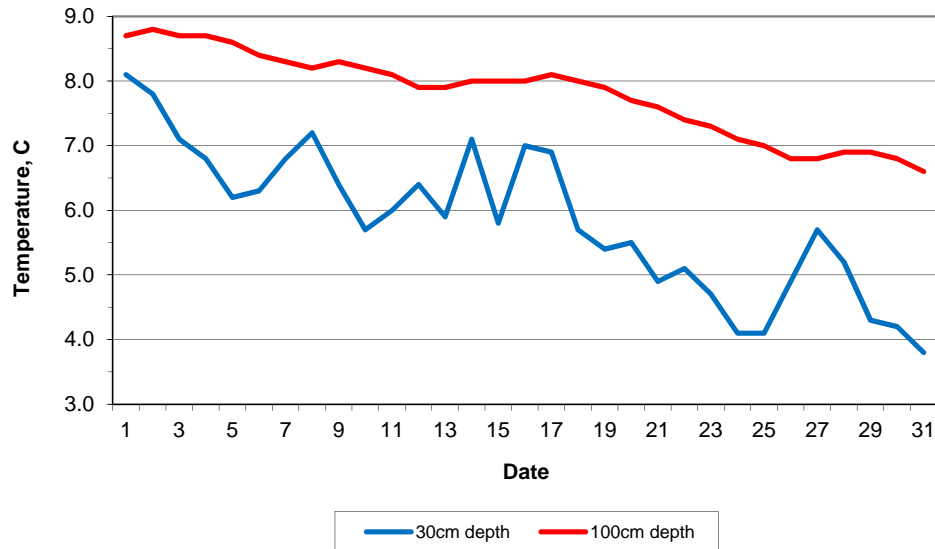
Days with

S snow(5) or sleet(1) falling L 50% snow cover at 09GMT H hail or ice pellets  
 T thunder heard G gale F fog at 09GMT

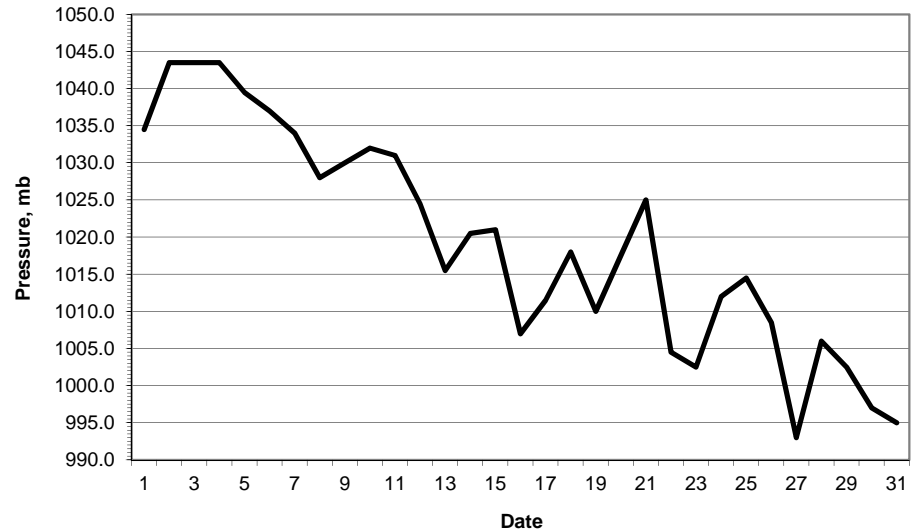
This information (and data for earlier months) is also available at

<http://www.met.reading.ac.uk/~brugge>

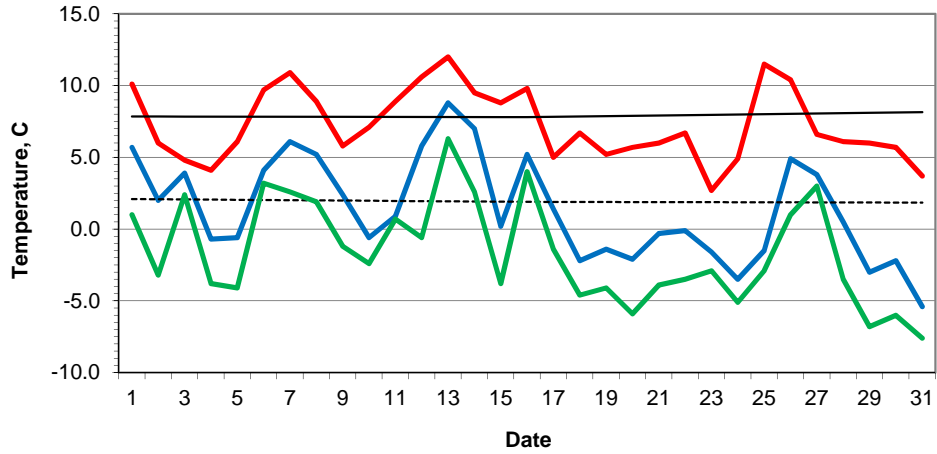
Daily soil temperatures, 0700GMT



Mean sea level pressure, 0900GMT

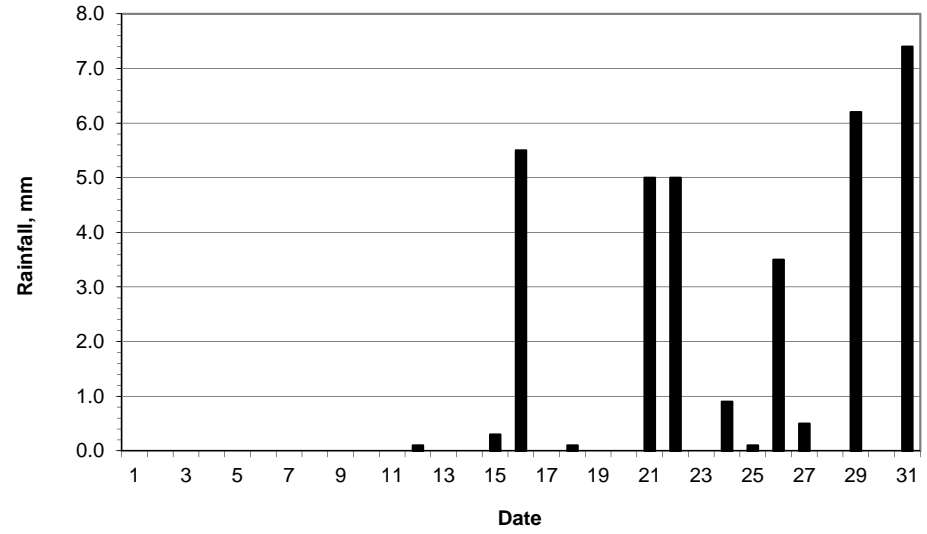


### Daily temperature extremes

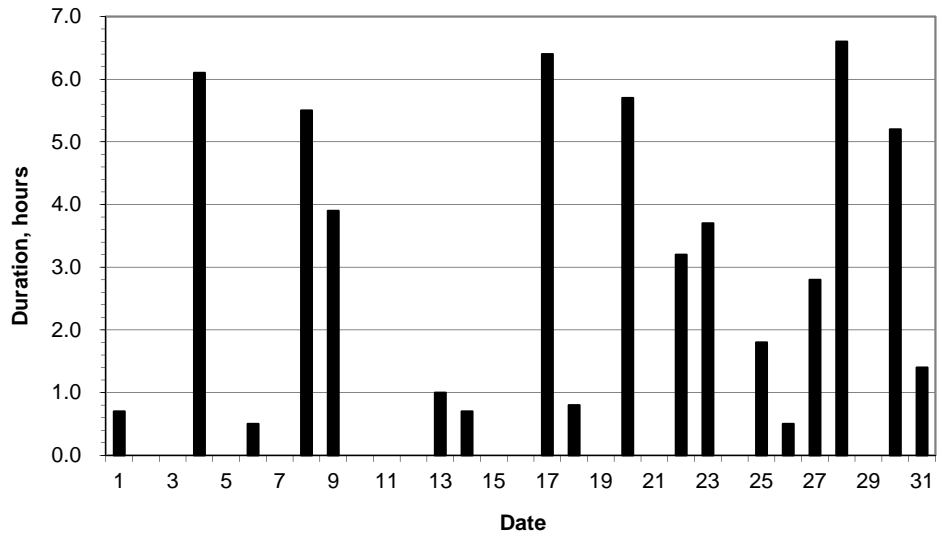


— Air max — Air min — Climatological air max - - - - - Climatological air min — Grass min

### Daily rainfall



### Daily sunshine



### Daily evaporation

