

MAIDENHEAD METEOROLOGICAL OBSERVATIONS FOR JANUARY 2018

DD	N	dd	ff	ww	VV	0900GMT		Temperature			Soil temperatures (depth in cm)						E	SS	Rain	Sun	S	L	H	T	G	F	Press	Rain hrs	Fr. hrs	Pch Evap			
						Temp	RH	Max	Min	Gmin	5	10	20	30	50	100																	
01	8	18	02	02	96	4.8	84	7.6	4.5	1.1	4.5	4.0	5.5	7.0	6.8	7.7	10	0	0.1	1.4	0	0	0	0	0	0	997.5	0.1	0.0	0.8	Number of		
02	8	18	02	03	97	3.8	86	12.5	3.2	-1.1	3.9	3.9	5.2	6.4	6.5	7.6	10	0	11.0	0.0	0	0	0	0	0	0	1011.5	5.0	0.0	1.0	days with		
03	7	27	19	80	97	8.2	64	10.3	3.8	1.2	5.5	5.5	7.0	6.7	6.5	7.6	10	0	8.3	4.4	0	0	0	0	0	0	998.0	4.1	0.0	1.7	2018 normal		
04	8	18	05	21	95	7.3	90	12.2	6.1	1.7	6.0	5.7	6.1	6.5	6.6	7.6	20	0	0.8	0.1	0	0	0	0	0	0	993.0	1.2	0.0	1.2	Snow/sleet falling		
05	8	22	02	02	97	6.4	87	8.1	4.3	0.5	4.8	4.8	5.9	6.6	6.6	7.6	10	0	tr	4.1	0	0	0	0	0	0	993.0	0.0	0.0	1.4	1 2.9		
06	6	09	05	03	97	2.0	88	5.7	-0.9	-4.4	2.7	2.7	4.4	5.9	6.3	7.7	10	0	tr	1.6	0	0	0	0	0	0	1009.0	0.0	2.6	0.1	50% snow cover 09GMT		
07	6	04	09	02	97	3.2	80	5.5	2.0	-2.1	2.7	2.4	3.9	5.3	5.9	7.6	10	0	tr	5.7	0	0	0	0	0	0	1027.5	0.0	0.0	1.1	0 1.5		
08	8	09	05	02	96	3.7	82	5.0	1.7	-1.4	3.2	2.8	3.7	4.5	5.3	7.5	10	0	tr	0.0	0	0	0	0	0	0	1024.0	0.0	0.0	0.7	Hail or ice pellets		
09	8	13	02	02	94	4.0	87	8.1	3.7	2.2	4.2	3.9	4.7	5.0	5.2	7.3	10	0	0.7	0.0	0	0	0	0	1	1008.5	1.2	0.0	0.2	0 0.3			
10	6	27	05	02	97	7.0	90	9.3	4.0	3.5	5.6	5.4	5.7	5.6	5.5	7.1	10	0	tr	4.8	0	0	0	0	0	0	1005.0	0.0	0.0	0.2	Thunder		
11	8	00	00	02	96	4.5	93	6.8	-0.1	-2.8	3.4	3.3	4.5	5.5	5.7	7.2	10	0	0.0	0.0	0	0	0	0	0	1018.0	0.0	0.2	0.3	0 0.4			
12	8	36	02	02	95	6.1	90	7.1	4.5	3.0	5.5	5.3	5.5	5.8	5.6	7.2	10	0	0.1	0.0	0	0	0	0	0	1022.0	0.5	0.0	0.5	Gale			
13	8	13	02	02	97	6.1	79	8.0	5.5	4.6	5.3	5.1	5.6	6.0	6.0	7.1	10	0	tr	0.4	0	0	0	0	0	0	1020.5	0.0	0.0	1.0	0 0.3		
14	8	09	00	02	97	4.6	74	9.6	4.3	3.1	4.8	4.6	5.5	6.0	6.0	7.2	10	0	2.5	0.0	0	0	0	0	0	1020.0	3.9	0.0	0.8	Fog at 09GMT			
15	8	22	05	21	97	9.6	89	10.8	4.1	-0.4	6.3	5.9	5.7	5.9	5.6	7.2	10	0	2.7	0.5	0	0	0	0	0	999.0	2.8	0.0	0.7	1 1.8			
16	1	27	05	02	97	5.2	70	7.5	5.2	1.6	4.4	6.7	5.0	6.2	6.1	7.2	10	0	0.1	4.7	0	0	0	0	0	997.0	0.2	0.0	1.5	Air frost			
17	0	27	09	02	97	3.9	67	11.7	2.2	-0.8	2.4	2.5	4.1	5.5	5.9	7.2	10	0	0.8	6.9	0	0	0	0	0	1007.0	3.2	0.0	2.0	7 9.1			
18	1	27	09	01	97	6.2	66	9.6	3.9	-0.1	4.7	4.6	5.4	5.5	5.6	7.2	10	0	tr	4.7	0	0	0	0	0	0	1002.5	0.0	0.0	0.9	Ground frost		
19	0	27	02	02	97	-0.8	84	6.7	-1.7	-6.1	1.7	1.8	3.8	5.2	5.6	7.1	40	0	2.4	6.5	0	0	0	0	0	1010.0	4.5	3.7	0.7	16 17.8			
20	8	18	02	61	96	3.7	92	4.6	-0.8	-2.0	2.8	2.5	3.5	4.6	5.1	7.1	20	0	4.9	0.0	0	0	0	0	0	1001.5	7.5	1.5	0.1	0.2mm precipitation			
21	8	22	02	68	95	1.4	98	10.0	1.0	-1.7	2.8	2.7	3.9	4.7	5.0	6.9	20	0	17.7	0.0	5	0	0	0	0	1015.5	9.3	0.0	0.0	17 16.0			
22	8	27	02	02	97	6.6	92	10.0	1.4	0.0	5.0	4.6	4.7	4.8	4.7	6.7	20	0	0.9	2.0	0	0	0	0	0	1010.0	1.0	0.0	0.9	1.0mm precipitation			
23	8	22	09	21	96	9.5	89	13.1	5.2	0.6	6.2	5.7	5.5	5.5	5.2	6.7	10	0	0.3	0.1	0	0	0	0	0	1016.0	0.8	0.0	0.9	10 11.7			
24	8	22	05	21	97	12.9	83	13.2	9.5	7.3	9.0	8.2	7.5	6.5	5.8	6.7	10	0	7.3	0.0	0	0	0	0	0	1005.0	2.1	0.0	0.3	5.0mm precipitation			
25	1	22	02	01	97	4.5	87	10.0	4.2	-0.9	4.8	4.9	6.1	6.7	6.5	6.9	10	0	0.7	7.3	0	0	0	0	0	1009.0	1.0	0.0	0.8	4 4.5			
26	7	31	02	21	96	3.8	93	8.3	-0.6	-3.7	3.8	3.7	4.8	5.9	6.1	7.0	10	0	0.0	2.7	0	0	0	0	0	1018.0	0.0	1.2	0.5	No sunshine			
27	8	22	02	02	97	4.5	92	10.9	0.2	-1.9	3.7	3.3	4.7	5.7	5.9	7.1	10	0	2.0	0.0	0	0	0	0	0	1028.0	2.6	0.0	0.5	10 11.9			
28	8	27	05	02	97	10.4	86	12.9	4.3	3.9	6.7	6.3	6.3	6.2	6.0	7.0	10	0	0.1	1.1	0	0	0	0	0	1030.5	0.1	0.0	1.5	A milder than average			
29	7	27	05	01	97	10.3	73	12.1	10.4	6.8	7.7	7.5	7.5	7.1	6.5	7.1	10	0	tr	1.0	0	0	0	0	0	0	1026.0	0.0	0.0	0.5	month, with rainfall and		
30	5	00	00	02	97	-0.7	86	10.0	-2.1	-4.9	2.8	3.3	5.4	6.8	6.7	7.2	10	0	0.3	4.9	0	0	0	0	0	1031.0	0.5	7.4	1.1	sunshine amounts			
31	8	27	05	02	06	8.6	75	8.6	-0.7	-1.0	6.7	6.4	6.4	6.5	6.5	7.4	10	0	1.7	1.8	0	0	0	0	0	1006.0	1.3	0.0	1.0	slightly above normal. It			
Monthly means						5.5	84	9.2	3.0	0.2	4.6	4.5	5.3	5.9	5.9	7.2												1011.6				was often unsettled and	
Monthly totals																					65.4	66.7						52.9	16.6	24.9	the lowest temperature of		
Highest values						12.9		13.2	10.4	7.3	9.0	8.2	7.5	7.1	6.8	7.7				17.7	7.3							9.3	7.4	2.0	the highest in January since		
Lowest values						-0.8	64	4.6	-2.1	-6.1	1.7	1.8	3.5	4.5	4.7	6.7																	2008. Snow fell on only
1981-2010 monthly climatological averages																																	one day.
						90	7.8	1.9	-0.8	3.8	3.8	4.6	5.3	5.4	6.7					61.0	57.5							1017.1	62.2	87.2	23.7		

Key

DD: date

07GMT observations

N	cloud cover (oktas, 9=obscured)	dd	wind direction (degrees/10)
ff	wind speed (knots)		
ww	present weather code		
1	cloud decreasing	50	intermittent slight drizzle
2	sky not changing	60	intermittent slight rain
3	cloud increasing	61	continuous slight rain
5	haze	63	continuous moderate rain
10	mist	80	slight rain shower
21	recent rain		

VV visibility (00-50 metres/100, 94 very poor, 95 poor, 96 moderate, 97 good)

Soil temperatures are for 0700GMT beneath bare soil (5, 10, 20cm) or grass (30, 50, 100cm)

09GMT observations

Temp	temperature (degC)	RH	relative humidity (%)
E	state of ground (X1, X2 and X3 snow, 10 moist, 20 wet, 40 frozen)	SS	snow depth (cm)
Press	air pressure (mb)		

24 hour readings

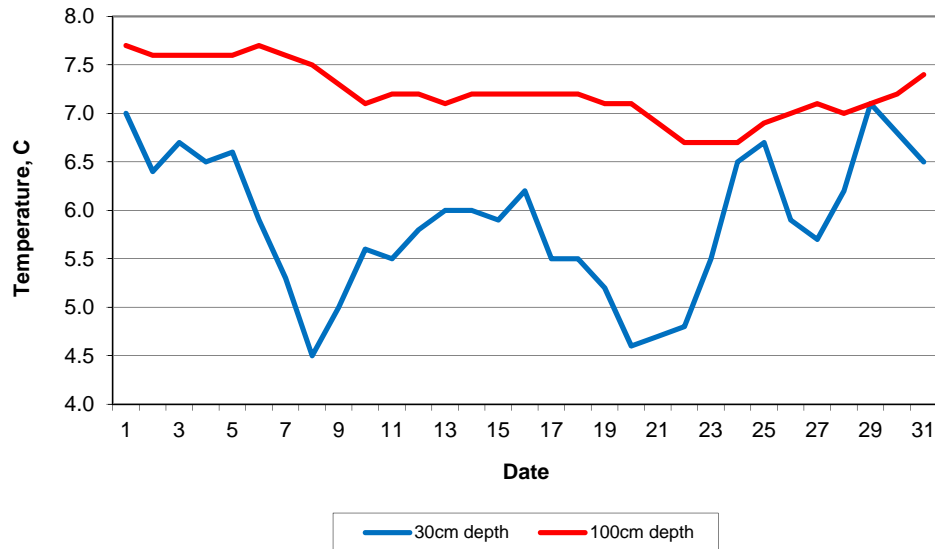
Max	maximum temperature (degC) beginning 09GMT	Min	minimum temperature (degC) ending 09GMT
Gmin	grass minimum temperature (degC) ending 09GMT	Rain	precipitation beginning 09GMT
Sun	sunshine (hours) sunrise-sunset	Rain hrs	hours of rainfall (>0.1mm/h) 09-09GMT
Fr. Hrs	hours of air frost (00-24GMT)	Pch Evap	Piche evaporation (ml) beginning 09GMT

Days with

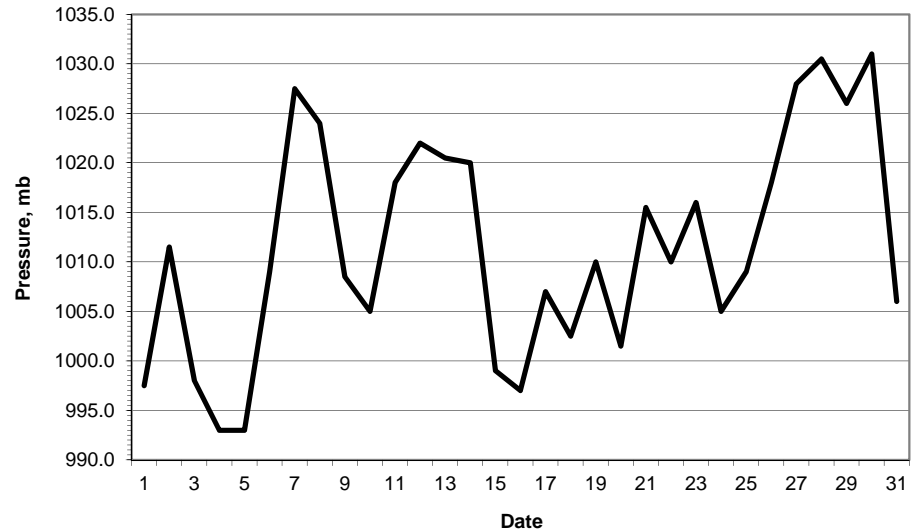
S	snow(5) or sleet(1) falling	L	50% snow cover at 09GMT	H	hail or ice pellets
T	thunder heard	G	gale	F	fog at 09GMT

This information (and data for earlier months) is also available at <http://www.met.reading.ac.uk/~brugge>

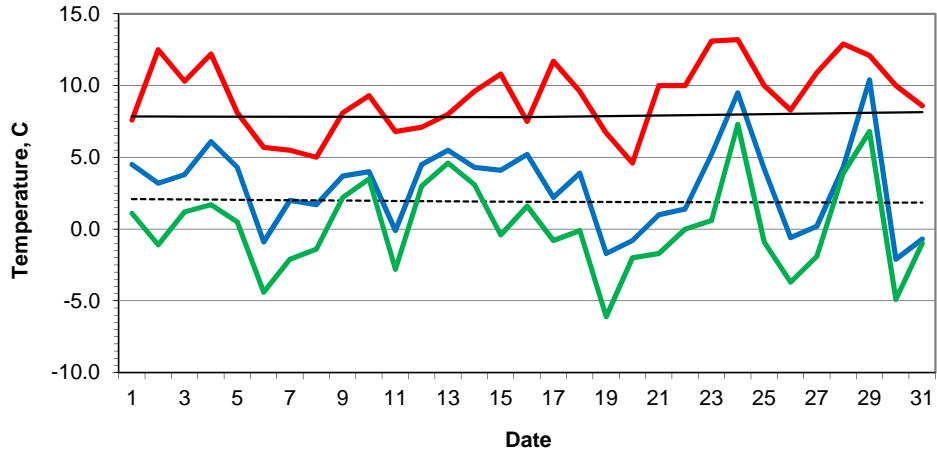
Daily soil temperatures, 0700GMT



Mean sea level pressure, 0900GMT

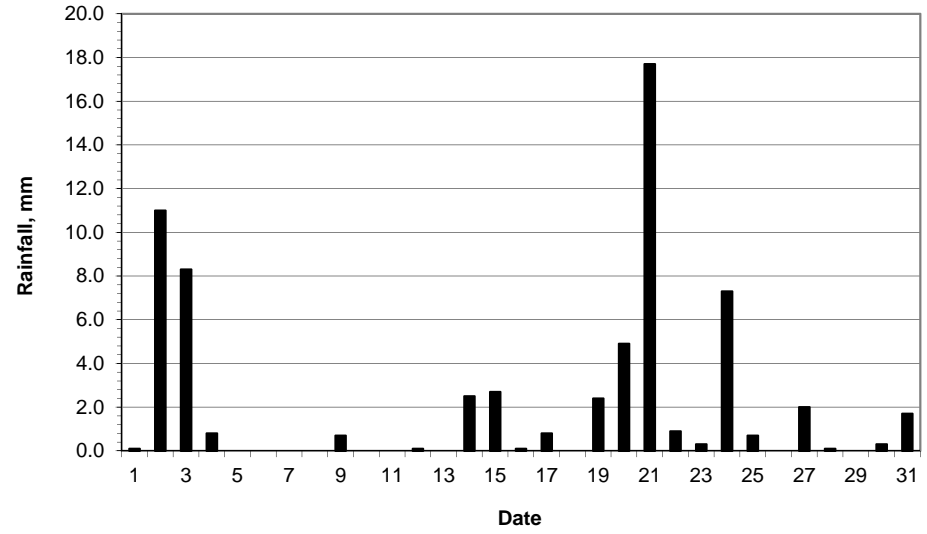


Daily temperature extremes

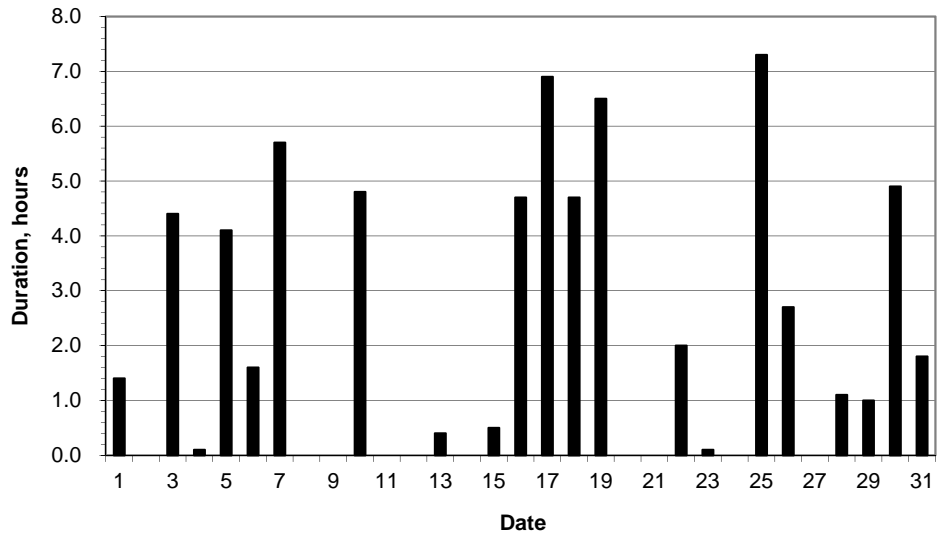


— Air max — Air min — Climatological air max - - - - Climatological air min — Grass min

Daily rainfall



Daily sunshine



Daily evaporation

