

MAIDENHEAD METEOROLOGICAL OBSERVATIONS FOR JANUARY 2014

DD	N	dd	ff	ww	VV	0900GMT		Temperature				Soil temperatures (depth in cm)						E	SS	Rain	Sun	S	L	H	T	G	F	Press	Rain hrs	Fr. hrs	Pch Evap	
						Temp	RH	Max	Min	Gmin	5	10	20	30	50	100																
01	8	18	13	02	97	8.7	96	10.5	3.7	-1.1	5.9	5.1	5.8	6.3	6.4	7.9	20	0	14.3	0.0	0	0	0	0	0	0	996.5	13.0	0.0	0.4	Number of days with 2014 normal Snow/sleet falling 0 2.9 50% snow cover 09GMT 0 1.5 Hail or ice pellets 2 0.3 Thunder 0 0.4 Gale 0 0.3 Fog at 09GMT 2 1.8 Air frost 8 9.1 Ground frost 16 17.8 0.2mm precipitation 25 16.0 1.0mm precipitation 25 11.7 5.0mm precipitation 12 4.5 No sunshine 8 11.9 A mild and sunnier than average January, but also the wettest since before 1859 locally with a large number (25) of rain days. No snowfall yet this winter and the monthly mean MSL pressure was some 15 mb below average in a month with winds predominantly from the SW quadrant.	
02	1	27	02	01	96	5.2	91	10.4	5.1	2.0	6.1	6.3	6.7	7.0	6.7	7.9	20	0	4.6	4.9	0	0	0	0	0	995.5	4.0	0.0	1.0			
03	1	22	09	21	97	7.3	82	10.2	5.2	1.1	6.9	6.7	7.0	7.0	7.1	7.9	20	0	19.8	1.7	0	0	4	0	0	994.0	7.5	0.0	0.9			
04	8	13	09	65	97	7.8	90	8.2	5.9	-3.5	6.3	6.1	5.8	6.3	7.1	8.0	20	0	6.4	0.0	0	0	0	0	0	991.0	5.7	0.0	0.3			
05	1	22	02	02	97	-0.5	99	12.4	-0.8	-3.7	4.0	3.4	5.0	6.5	6.8	7.9	20	0	6.5	0.0	0	0	0	0	0	1004.0	3.8	4.3	1.7			
06	2	22	09	02	97	9.3	81	12.1	-0.5	-2.1	7.8	7.2	6.8	6.9	6.7	7.9	20	0	3.8	1.2	0	0	0	0	0	994.5	1.9	0.0	1.5			
07	8	22	17	02	97	10.1	84	11.4	9.2	6.3	7.6	7.1	7.0	7.5	7.0	7.9	20	0	4.0	3.2	0	0	0	0	0	1001.0	2.5	0.0	0.9			
08	7	22	05	02	97	7.4	91	11.8	7.0	2.0	6.1	5.7	6.5	7.5	7.3	8.0	20	0	3.1	0.5	0	0	0	0	0	1014.0	3.6	0.0	0.4			
09	6	22	13	21	97	8.5	83	9.6	7.0	2.6	8.0	7.9	7.9	7.7	7.5	8.1	20	0	0.0	4.3	0	0	0	0	0	1003.0	0.0	0.0	0.7			
10	0	22	02	02	97	0.0	89	9.5	-0.2	-3.9	3.3	4.3	5.7	7.2	7.4	8.1	10	0	3.6	3.5	0	0	0	0	0	1015.5	8.5	1.2	0.3			
11	1	27	02	02	97	5.0	90	9.0	0.0	-3.5	6.0	6.6	6.8	7.0	7.2	8.1	20	0	0.0	6.5	0	0	0	0	0	1016.5	0.0	0.0	0.4			
12	2	00	00	03	96	0.4	89	9.4	-2.4	-5.3	2.7	2.7	4.4	6.3	6.9	8.1	40	0	3.0	0.9	0	0	0	0	0	1019.5	3.3	0.0	0.3			
13	1	22	02	02	96	2.2	88	10.0	0.4	-2.0	1.1	4.3	5.6	6.1	6.5	8.0	10	0	4.0	4.6	0	0	0	0	0	1008.0	2.0	0.0	0.2			
14	1	31	02	02	96	-0.5	88	9.6	-0.8	-3.9	2.8	3.1	4.5	6.0	6.5	7.8	40	0	6.2	4.9	0	0	0	0	0	1004.5	7.2	2.6	0.4			
15	8	22	05	02	97	9.5	96	10.2	-0.5	-4.3	6.4	5.6	5.0	5.9	6.5	7.7	20	0	3.1	0.0	0	0	0	0	0	1000.0	3.3	0.0	0.4			
16	8	18	02	21	96	5.5	90	10.5	5.5	2.5	5.6	6.1	6.8	6.8	6.6	7.6	20	0	5.7	2.9	0	0	0	0	0	992.5	4.7	0.0	0.5			
17	6	18	02	01	96	6.7	89	9.3	5.4	0.7	6.1	6.0	6.5	6.9	6.9	7.6	20	0	1.5	2.6	0	0	0	0	0	990.5	3.9	0.0	0.5			
18	8	13	02	61	96	7.9	96	9.8	2.8	-1.1	6.6	6.1	6.3	6.8	6.9	7.7	20	0	1.3	0.1	0	0	0	0	0	992.0	1.2	0.0	0.6			
19	5	13	02	02	97	5.8	94	8.9	5.8	1.8	6.6	6.4	6.9	7.0	6.9	7.8	10	0	0.0	5.6	0	0	0	0	0	994.5	0.0	0.0	0.4			
20	0	00	00	02	96	-1.3	89	8.4	-1.3	-3.7	2.9	3.3	4.9	6.5	7.0	7.8	40	0	tr	3.1	0	0	0	0	0	1007.5	0.0	6.3	0.1			
21	9	00	00	43	03	2.2	89	7.1	-1.3	-3.9	3.8	4.2	5.0	6.0	6.5	7.7	10	0	7.4	1.7	0	0	0	0	1	1012.0	5.2	0.0	0.4			
22	8	13	02	02	96	6.9	93	10.6	2.2	1.0	5.8	5.6	5.5	6.1	6.5	7.6	10	0	0.1	2.3	0	0	0	0	0	1005.5	0.2	0.0	0.1			
23	8	22	02	02	96	3.5	94	8.8	1.9	-1.5	3.9	4.2	5.0	6.4	6.4	7.6	10	0	1.1	4.1	0	0	0	0	0	1011.0	0.9	0.0	0.6			
24	8	13	02	03	97	3.4	92	8.2	0.5	0.3	3.8	3.6	4.9	6.0	6.4	7.5	10	0	8.8	0.0	0	0	0	0	0	1014.0	10.0	0.0	0.3			
25	7	27	02	02	97	8.1	97	11.2	3.0	2.0	6.6	6.1	6.2	6.2	6.3	7.4	10	0	2.5	1.6	0	0	5	0	0	1014.5	0.5	0.0	1.0			
26	8	22	09	02	97	6.0	85	9.2	3.4	1.0	4.9	4.6	5.5	6.3	6.5	7.4	10	0	8.2	0.8	0	0	0	0	0	1005.5	6.8	0.0	0.4			
27	8	22	05	25	97	3.2	88	8.9	1.3	-2.0	3.8	3.7	4.7	6.0	6.4	7.4	10	0	5.7	3.8	0	0	0	0	0	990.0	3.2	0.0	0.5			
28	7	18	05	03	97	5.3	89	10.6	3.2	-1.0	4.0	3.9	4.9	5.8	6.3	7.4	10	0	3.3	3.8	0	0	0	0	0	984.5	2.0	0.0	0.6			
29	8	09	05	02	97	5.3	87	5.3	5.0	1.6	5.4	5.1	5.5	6.0	6.1	7.2	10	0	20.0	0.0	0	0	0	0	0	993.5	17.5	0.0	0.3			
30	8	04	05	15	96	3.3	90	5.2	3.1	2.6	4.4	4.3	4.9	5.7	6.1	7.1	20	0	0.1	0.0	0	0	0	0	0	1002.5	0.1	0.0	0.2			
31	8	09	02	02	06	3.4	93	9.4	2.8	0.2	4.4	4.5	5.0	5.6	5.9	7.1	10	0	15.0	0.0	0	0	0	0	1	1003.0	9.0	0.0	0.5			
Monthly means						5.0	90	9.5	2.6	-0.6	5.1	5.2	5.8	6.5	6.7	7.7												1002.3				
Monthly totals																					163.1	68.6							131.5	14.4	16.8	
Highest values						10.1		12.4	9.2	6.3	8.0	7.9	7.9	7.7	7.5	8.1				20.0	6.5								17.5	6.3	1.7	
Lowest values						-1.3	81	5.2	-2.4	-5.3	1.1	2.7	4.4	5.6	5.9	7.1																
1981-2010 monthly climatological averages							90	7.8	1.9	-0.8	3.8	3.8	4.6	5.3	5.4	6.7				61.0	57.5								1017.1	62.2	87.2	23.7

Key

DD: date  
07GMT observations  
N cloud cover (oktas, 9=obscured) dd wind direction (degrees/10)  
ff wind speed (knots)  
ww present weather code  
1 cloud decreasing 50 intermittent slight drizzle  
2 sky not changing 60 intermittent slight rain  
3 cloud increasing 61 continuous slight rain  
5 haze 63 continuous moderate rain  
10 mist 80 slight rain shower  
21 recent rain  
VV visibility (00-50 metres/100, 94 very poor, 95 poor, 96 moderate, 97 good)  
Soil temperatures are for 0700GMT beneath bare soil (5, 10, 20cm) or grass (30, 50, 100cm)

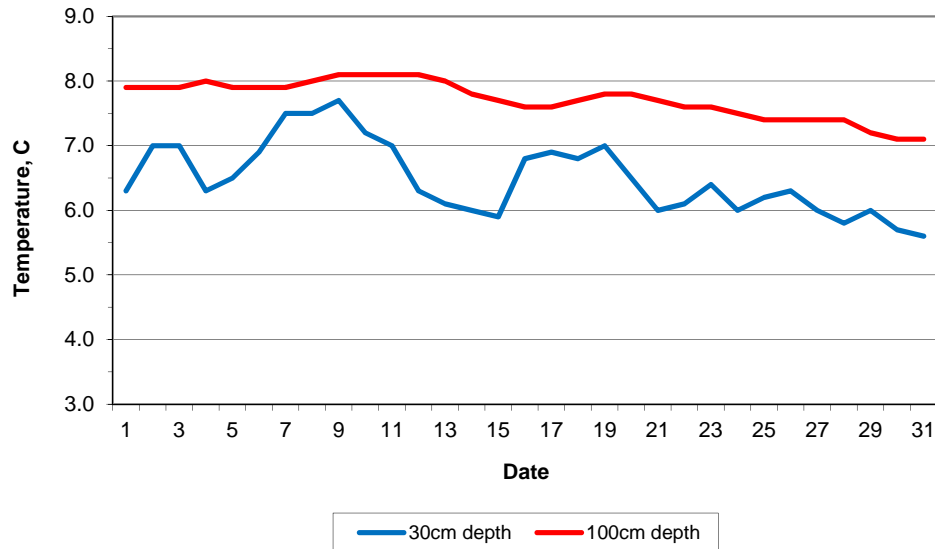
09GMT observations  
Temp temperature (degC) RH relative humidity (%)  
E state of ground (X1, X2 and X3 snow, 10 moist, 20 wet, 40 frozen) SS snow depth (cm)  
Press air pressure (mb)

24 hour readings  
Max maximum temperature (degC) beginning 09GMT Min minimum temperature (degC) ending 09GMT  
Gmin grass minimum temperature (degC) ending 09GMT Rain precipitation beginning 09GMT  
Sun sunshine (hours) sunrise-sunset Rain hrs hours of rainfall (>0.1mm/h) 09-09GMT  
Fr. Hrs hours of air frost (00-24GMT) Pch Evap Piche evaporation (ml) beginning 09GMT

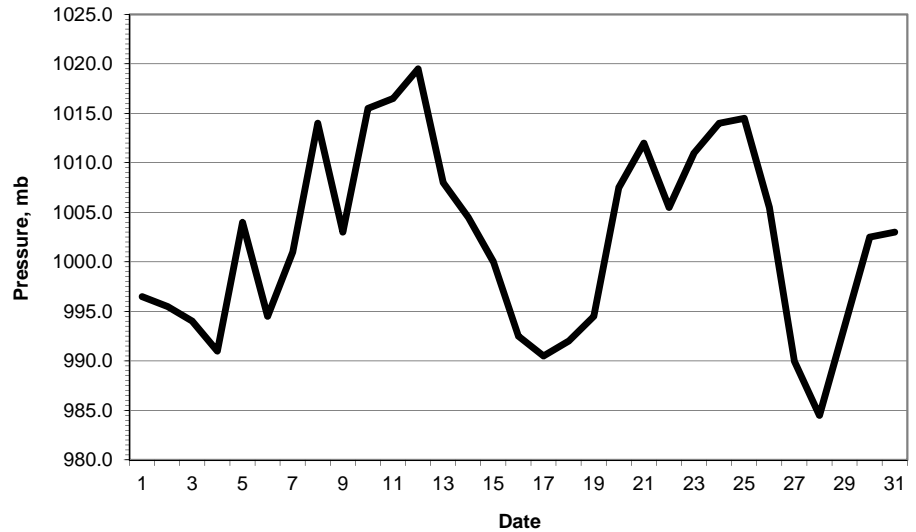
Days with  
S snow(5) or sleet(1) falling L 50% snow cover at 09GMT H hail or ice pellets  
T thunder heard G gale F fog at 09GMT

This information (and data for earlier months) is also available at <http://www.met.reading.ac.uk/~brugge>

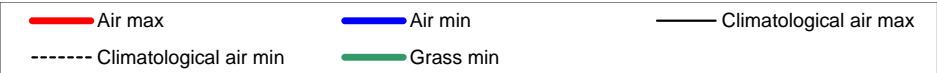
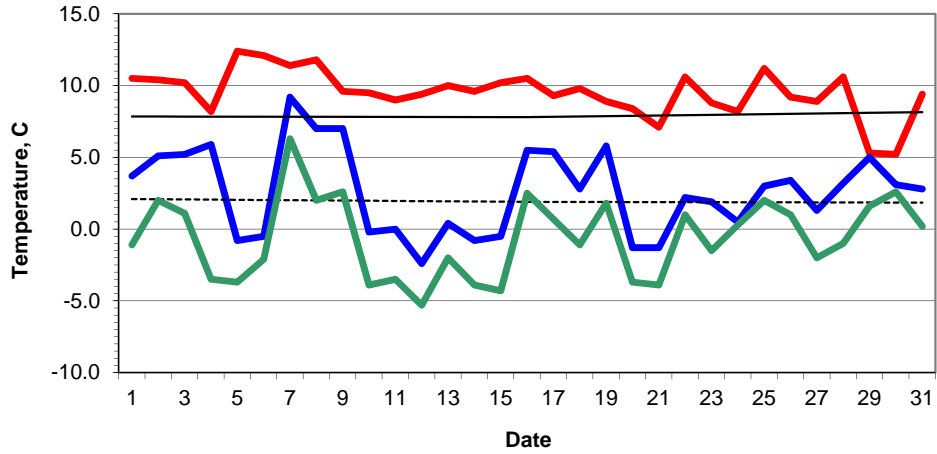
Daily soil temperatures, 0700GMT



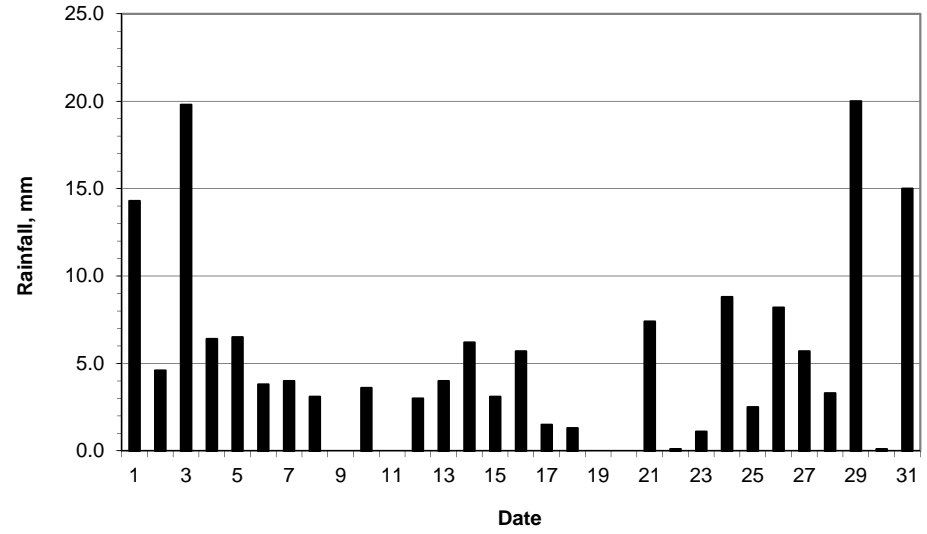
Mean sea level pressure, 0900GMT



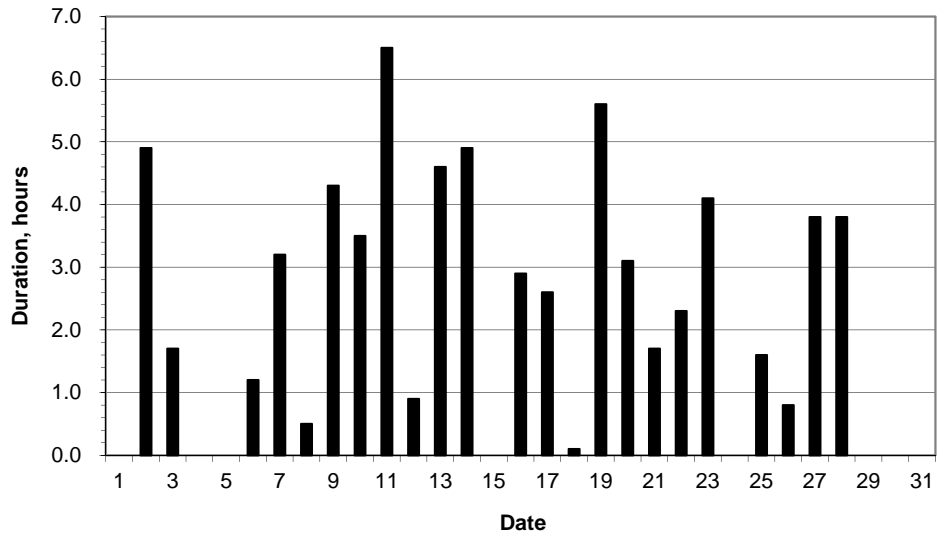
### Daily temperature extremes



### Daily rainfall



### Daily sunshine



### Daily evaporation

