

MAIDENHEAD METEOROLOGICAL OBSERVATIONS FOR JANUARY 2013

DD	N	dd	ff	ww	VV	0900GMT		Temperature				Soil temperatures (depth in cm)						E	SS	Rain	Sun	S	L	H	T	G	F	Press	Rain	Fr.	Pch			
						Temp	RH	Max	Min	Gmin	5	10	20	30	50	100	hrs												hrs	Evap				
01	1	00	00	02	97	2.6	96	8.0	2.0	-0.2	5.0	5.6	7.0	7.7	7.5	7.9	20	0	0.1	5.1	0	0	0	0	0	0	0	0	1006.0	0.1	0.0	0.8	Number of	
02	8	23	02	03	96	5.2	95	10.6	2.3	-1.4	4.7	4.3	5.6	7.0	7.3	8.0	10	0	0.2	0.0	0	0	0	0	0	0	0	1023.5	0.6	0.0	0.4	days with		
03	8	21	02	02	98	9.7	93	11.4	5.2	3.7	7.7	7.2	7.6	7.1	7.2	7.9	10	0	0.0	0.0	0	0	0	0	0	0	0	1031.0	0.0	0.0	0.7	2013 normal		
04	7	27	02	02	97	8.7	94	10.5	8.7	6.2	7.9	7.9	8.0	7.6	7.4	7.9	10	0	0.1	0.1	0	0	0	0	0	0	0	1036.5	0.2	0.0	0.5	Snow/sleet falling		
05	8	22	02	21	97	9.3	97	10.7	8.5	6.0	7.8	7.9	8.0	7.9	7.6	8.0	10	0	tr	0.0	0	0	0	0	0	0	0	1034.5	0.0	0.0	0.3	9 2.9		
06	8	22	02	50	06	7.5	99	8.5	5.2	2.4	6.7	7.1	7.1	7.8	7.8	8.1	10	0	0.1	0.0	0	0	0	0	0	1	1032.0	0.1	0.0	0.1	50% snow cover 09GMT			
07	8	00	00	02	96	7.6	97	9.5	7.1	6.8	7.2	7.2	7.7	7.9	7.8	8.1	10	0	tr	0.0	0	0	0	0	0	0	0	1026.5	0.0	0.0	0.5	7 1.5		
08	8	22	02	02	97	9.4	96	10.9	7.6	4.3	7.7	7.7	7.9	8.0	7.9	8.1	10	0	3.3	0.0	0	0	0	0	0	0	1024.0	9.6	0.0	0.4	Hail or ice pellets			
09	8	36	02	02	97	8.0	94	9.0	8.0	7.2	8.4	8.3	8.5	8.3	8.1	8.1	10	0	0.0	3.0	0	0	0	0	0	0	1021.5	0.0	0.0	0.8	0 0.3			
10	8	32	02	10	95	2.2	94	4.0	-0.6	-2.0	3.9	4.1	6.0	7.6	7.8	8.2	10	0	0.0	0.0	0	0	0	0	0	0	1015.5	0.0	5.1	0.2	Thunder			
11	8	04	02	02	96	4.0	97	6.6	1.2	-0.7	4.9	4.9	5.7	7.0	7.6	8.3	10	0	3.3	1.1	0	0	0	0	0	0	1018.0	4.0	0.0	0.5	0 0.4			
12	8	13	09	02	97	3.6	90	5.1	1.5	-1.1	4.0	4.4	5.3	6.5	7.1	8.1	20	0	0.1	0.0	0	0	0	0	0	0	1011.5	0.2	0.0	1.1	Gale			
13	3	04	02	01	97	0.5	81	2.5	-0.1	-2.1	2.2	2.8	4.5	6.1	6.7	8.0	10	0	0.4	1.0	0	0	0	0	0	0	1019.5	1.0	0.1	0.5	0 0.3			
14	8	22	02	26	95	0.2	98	2.4	-0.1	-1.2	2.3	2.6	3.9	5.6	6.4	7.9	X2	<1	3.9	0.0	5	1	0	0	0	0	1014.5	4.0	0.2	0.1	Fog at 09GMT			
15	8	36	05	03	97	1.5	91	3.3	0.0	-0.6	2.4	2.6	3.5	5.1	5.9	7.6	X1	<1	0.0	4.4	0	0	0	0	0	0	1010.0	0.0	6.1	0.3	1 1.8			
16	8	05	05	10	96	-2.0	96	-0.2	-3.6	-4.5	0.5	0.9	2.8	4.7	5.6	7.5	40	0	0.0	0.0	0	0	0	0	0	0	1012.5	0.0	24.0	0.7	Air frost			
17	7	36	02	02	95	-1.2	94	1.9	-3.4	-4.4	0.6	0.8	2.5	4.1	5.2	7.2	40	0	0.1	0.0	5	0	0	0	0	0	1019.0	0.5	12.3	0.4	11 9.1			
18	8	13	09	70	95	-1.0	91	0.5	-1.2	-1.1	0.7	1.0	2.2	3.9	4.7	7.0	X5	<1	6.6	0.0	5	0	0	0	0	0	1006.5	6.7	15.9	0.0	Ground frost			
19	8	09	02	02	96	0.5	96	0.8	-1.7	-1.6	1.4	1.2	2.1	3.8	4.6	6.7	X7	12	tr	0.0	5	1	0	0	0	0	998.0	0.0	10.7	0.3	21 17.8			
20	8	04	02	70	96	-1.2	99	0.2	-1.2	-1.5	1.1	1.1	2.2	3.6	4.5	6.5	X7	9	3.0	0.0	5	1	0	0	0	0	997.5	11.0	19.3	0.0	0.2mm precipitation			
21	8	22	03	02	96	-0.3	98	1.4	-1.3	-0.9	0.6	0.5	2.6	3.5	4.4	6.4	X7	9	0.0	0.0	0	1	0	0	0	0	994.0	0.0	13.7	0.0	16 16.0			
22	8	00	00	41	09	-2.0	96	2.3	-4.8	-4.5	0.6	0.9	2.2	3.4	4.2	6.1	X7	7	2.3	0.0	5	1	0	0	0	0	1001.0	6.5	11.0	0.0	1.0mm precipitation			
23	8	05	09	70	95	1.2	92	1.9	-2.0	-1.1	1.3	1.3	2.0	3.2	3.9	6.0	X6	4	0.2	0.0	5	1	0	0	0	0	1008.5	0.3	0.0	0.0	11 11.7			
24	8	05	02	02	96	1.2	90	2.0	0.7	-0.4	1.3	1.5	2.4	3.3	3.7	5.9	X6	2	0.0	0.0	5	1	0	0	0	0	1015.5	0.0	0.0	0.4	5.0mm precipitation			
25	8	13	02	02	96	1.1	92	3.4	0.3	-0.2	1.1	1.3	2.4	3.3	3.7	5.8	X5	<1	5.1	3.4	1	0	0	0	0	0	1018.5	7.2	0.0	0.3	6 4.5			
26	6	27	05	02	97	3.0	98	10.3	1.1	-0.7	2.0	1.9	2.7	3.4	3.7	5.6	20	0	7.9	3.4	0	0	0	0	0	0	1009.0	7.5	0.0	0.7	No sunshine			
27	4	22	13	02	97	8.5	79	10.9	3.0	0.0	6.1	5.6	5.0	4.3	4.1	5.6	20	0	0.7	5.7	0	0	0	0	0	0	995.0	0.8	0.0	1.2	19 11.9			
28	2	22	09	02	97	2.9	96	10.3	1.4	-2.0	2.2	2.6	3.0	4.5	4.5	5.6	10	0	5.5	0.3	0	0	0	0	0	0	1010.0	7.2	0.0	0.7	More days with snowfall			
29	8	22	05	02	96	10.3	95	13.4	2.9	-0.3	6.2	5.9	5.6	5.1	4.7	5.7	20	0	5.4	0.0	0	0	0	0	0	0	1003.0	4.5	0.0	0.7	and lying snow than			
30	8	22	05	02	97	9.3	93	12.0	8.5	4.2	7.7	7.3	7.5	6.3	5.4	5.9	20	0	0.9	5.5	0	0	0	0	0	0	1005.0	0.2	0.0	1.8	usual. Unusually dull with			
31	3	22	13	02	06	9.5	79	10.4	6.1	2.1	5.8	6.6	6.3	6.4	6.0	6.1	10	0	8.9	4.7	0	0	0	0	0	0	1010.0	7.5	0.0	1.1	two long dull spells			
Monthly means						3.9	93	6.3	2.0	0.3	3.9	4.0	4.8	5.6	5.9	7.1													1013.8				including 16th-24th.	
Monthly totals																					58.1	37.7								79.7	118.4	15.5	January 2002 had the	
Highest values						10.3		13.4	8.7	7.2	8.4	8.3	8.5	8.3	8.1	8.3				8.9	5.7								11.0	24.0	1.8	same sunshine total as		
Lowest values						-2.0	79	-0.2	-4.8	-4.5	0.5	0.5	2.0	3.2	3.7	5.6																		this year, before that
1981-2010 monthly climatological averages																																		1996 was much duller.
						90	7.8	1.9	-0.8	3.8	3.8	4.6	5.3	5.4	6.7				61.0	57.5									1017.1	62.2	87.2	23.7		

Key

DD: date

07GMT observations

N	cloud cover (oktas, 9=obscured)	dd	wind direction (degrees/10)
ff	wind speed (knots)		
ww	present weather code		
1	cloud decreasing	50	intermittent slight drizzle
2	sky not changing	60	intermittent slight rain
3	cloud increasing	61	continuous slight rain
5	haze	63	continuous moderate rain
10	mist	80	slight rain shower
21	recent rain		

VV visibility (00-50 metres/100, 94 very poor, 95 poor, 96 moderate, 97 good)

Soil temperatures are for 0700GMT beneath bare soil (5, 10, 20cm) or grass (30, 50, 100cm)

09GMT observations

Temp	temperature (degC)	RH	relative humidity (%)
E	state of ground (X1, X2 and X3 snow, 10 moist, 20 wet, 40 frozen)	SS	snow depth (cm)
Press	air pressure (mb)		

24 hour readings

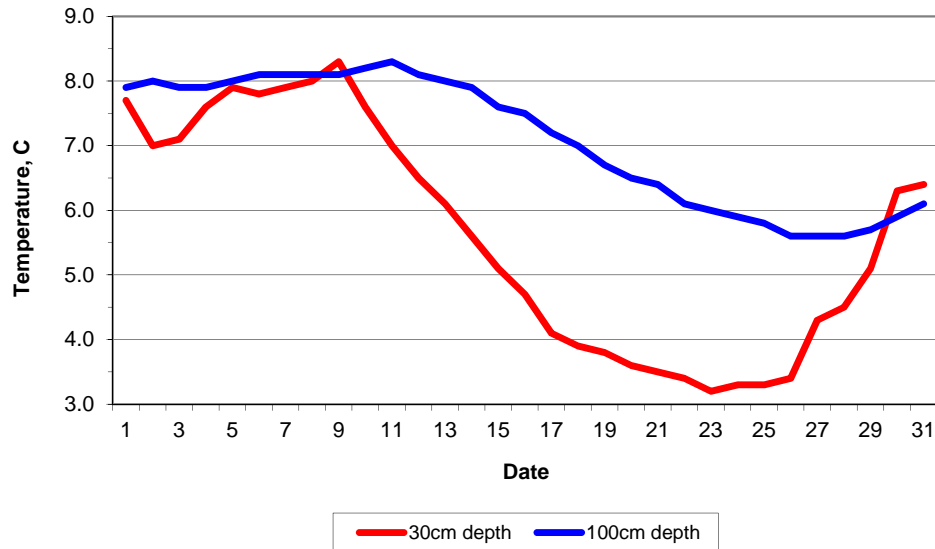
Max	maximum temperature (degC) beginning 09GMT	Min	minimum temperature (degC) ending 09GMT
Gmin	grass minimum temperature (degC) ending 09GMT	Rain	precipitation beginning 09GMT
Sun	sunshine (hours) sunrise-sunset	Rain hrs	hours of rainfall (>0.1mm/h) 09-09GMT
Fr. Hrs	hours of air frost (00-24GMT)	Pch Evap	Piche evaporation (ml) beginning 09GMT

Days with

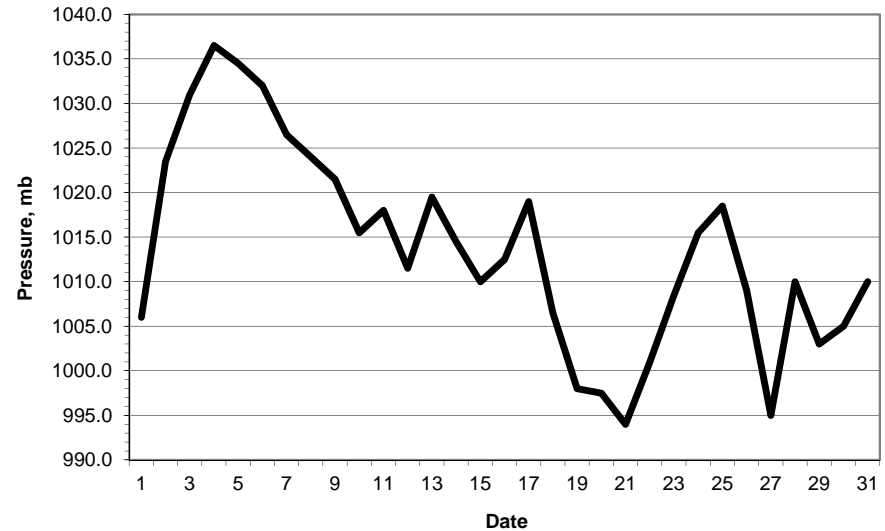
S	snow(5) or sleet(1) falling	L	50% snow cover at 09GMT	H	hail or ice pellets
T	thunder heard	G	gale	F	fog at 09GMT

This information (and data for earlier months) is also available at <http://www.met.reading.ac.uk/~brugge>

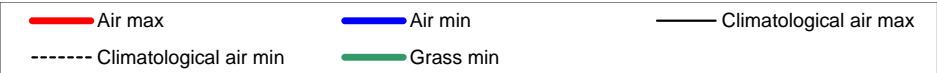
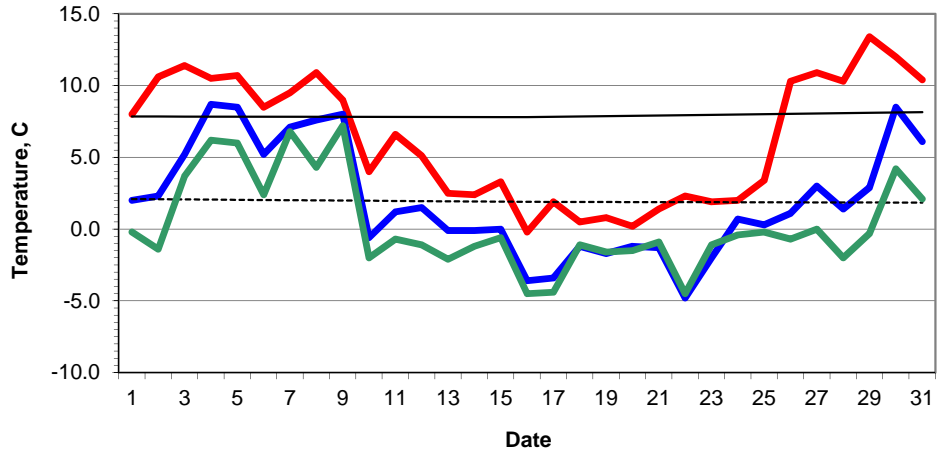
Daily soil temperatures, 0700GMT



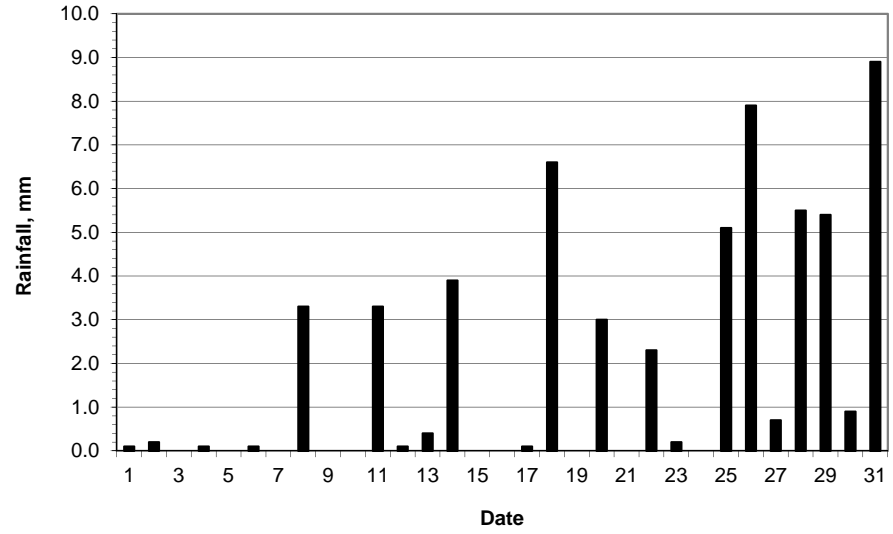
Mean sea level pressure, 0900GMT



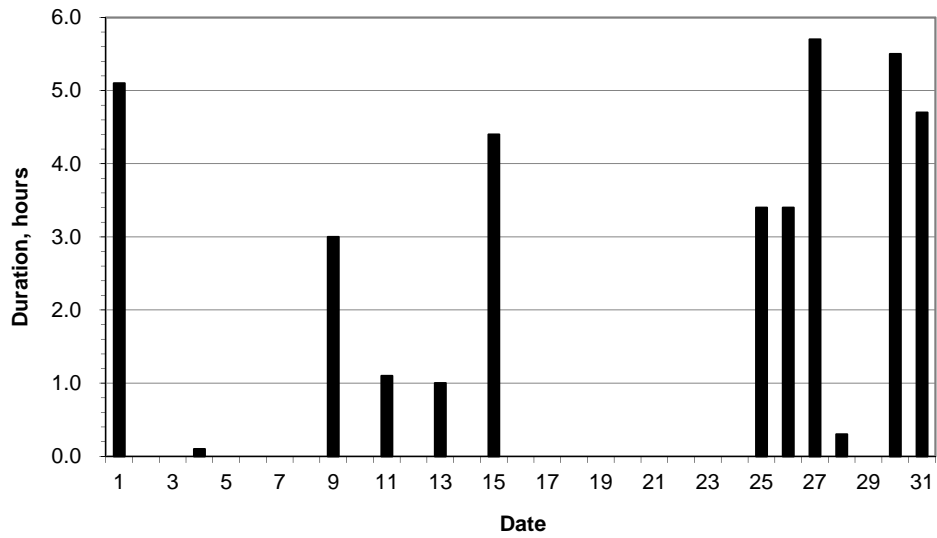
### Daily temperature extremes



### Daily rainfall



### Daily sunshine



### Daily evaporation

