

MAIDENHEAD METEOROLOGICAL OBSERVATIONS FOR JANUARY 2007

DD	N	dd	ff	ww	VV	0900GMT		Temperature			Soil temperatures (depth in cm)						E	SS	Rain	Sun	S	L	H	T	G	F	Press	Rain	Fr.	Pch	
						Temp	RH	Max	Min	Gmin	5	10	20	30	50	100												hrs	hrs	Evap	
01	1	27	09	01	97	6.3	90	9.6	5.1	3.0	6.6	6.6	7.5	8.0	8.0	8.6	10	0	3.6	5.4	0	0	4	0	0	0	1016.0	2.8	0.0	1.1	Number of days with 2007 normal Snow/sleet falling 2 2.9 50% snow cover 09GMT 1 1.7 Hail or ice pellets 1 0.4 Thunder 0 0.4 Gale 0 0.6 Fog at 09GMT 0 2.6 Air frost 3 10.2 Ground frost 11 17.4 0.2mm precipitation 21 15.5 1.0mm precipitation 15 11.2 5.0mm precipitation 5 4.7 No sunshine 8 13.4 Another warm month, the warmest January since before 1953. Although snow fell on two days, there was very little wintry weather during the month with daytime temperatures exceeding 10C on 22 days.
02	0	27	13	02	97	6.5	85	9.8	4.2	0.6	5.1	5.1	6.8	7.5	7.7	8.6	10	0	0.1	5.8	0	0	0	0	0	1021.5	0.3	0.0	1.2		
03	8	25	05	80	97	9.7	91	11.4	3.7	-0.5	6.5	6.1	6.7	7.1	7.5	8.6	10	0	2.0	0.0	0	0	0	0	0	1026.0	1.6	0.0	0.9		
04	1	27	13	01	97	9.0	80	11.4	9.0	6.2	6.7	7.2	7.4	7.7	7.6	8.6	10	0	0.0	3.4	0	0	0	0	0	1011.5	0.0	0.0	1.1		
05	7	22	05	02	97	9.2	92	11.8	8.0	5.6	7.2	7.3	8.0	8.0	7.7	8.6	10	0	1.0	0.2	0	0	0	0	0	1019.0	1.7	0.0	0.7		
06	8	18	02	61	95	6.5	96	10.2	4.0	0.2	6.7	6.6	7.2	7.9	7.9	8.6	10	0	12.2	0.0	0	0	0	0	0	1016.5	6.0	0.0	0.5		
07	8	20	09	25	97	10.2	91	11.5	4.1	-0.1	7.3	7.1	7.0	7.5	7.8	8.7	10	0	4.6	0.0	0	0	0	0	0	1013.5	6.8	0.0	0.6		
08	5	27	02	02	97	6.6	91	13.0	5.1	0.4	7.0	7.2	8.1	8.0	7.8	8.7	10	0	1.3	0.0	0	0	0	0	0	1003.5	3.5	0.0	1.1		
09	6	22	19	02	97	12.3	78	13.5	5.4	1.2	9.4	8.9	8.5	8.4	8.0	8.8	10	0	7.8	0.1	0	0	0	0	0	1003.5	5.8	0.0	1.6		
10	8	23	13	02	97	10.6	90	11.3	10.4	9.5	9.8	9.8	9.9	9.0	8.4	8.8	10	0	0.3	4.0	0	0	0	0	0	1006.5	0.9	0.0	1.6		
11	8	22	24	60	97	10.5	88	12.4	4.5	1.6	8.1	7.8	8.0	8.1	9.0	9.0	10	0	5.8	1.1	0	0	0	0	0	1007.5	4.0	0.0	1.2		
12	8	22	09	02	97	10.3	78	13.3	6.5	3.0	7.5	7.4	7.4	8.5	8.5	9.0	10	0	0.5	1.7	0	0	0	0	0	1022.0	1.3	0.0	1.3		
13	8	24	05	02	96	10.2	90	12.1	9.9	8.2	8.8	9.1	9.0	8.9	8.5	9.0	10	0	1.6	0.0	0	0	0	0	0	1020.0	0.3	0.0	1.0		
14	4	24	05	03	97	3.8	89	11.6	3.8	1.6	4.5	4.8	6.8	8.6	8.5	9.1	10	0	0.0	4.4	0	0	0	0	0	1030.0	0.0	0.0	0.7		
15	8	21	05	02	97	8.5	82	11.4	3.8	-2.1	4.4	4.7	5.4	7.8	8.5	9.1	10	0	2.4	3.2	0	0	0	0	0	1025.0	4.7	0.0	0.5		
16	8	21	05	63	96	10.7	89	12.0	7.5	7.1	8.1	8.4	8.0	8.0	8.6	9.0	10	0	7.0	0.0	0	0	0	0	0	1016.0	5.1	0.0	1.1		
17	8	24	09	61	97	10.9	87	13.0	10.7	8.5	7.8	8.0	8.8	8.6	8.6	9.0	10	0	9.6	1.0	0	0	0	0	0	1006.0	7.6	0.0	1.0		
18	8	23	19	60	96	13.0	91	14.1	7.7	4.7	9.5	10.0	8.6	8.6	8.7	9.1	10	0	1.1	0.1	0	0	0	0	0	990.0	3.8	0.0	1.1		
19	3	26	09	02	97	10.3	83	13.2	9.8	7.3	8.0	8.2	8.8	9.0	8.9	9.1	10	0	2.4	2.4	0	0	0	0	0	1015.5	2.5	0.0	1.9		
20	6	25	05	02	97	8.6	83	10.7	8.6	6.6	9.0	9.4	9.3	9.4	9.2	9.2	10	0	0.7	5.2	0	0	0	0	0	1011.0	0.5	0.0	2.4		
21	5	24	13	25	97	5.3	93	9.2	4.5	0.8	5.9	6.2	7.6	8.8	8.9	9.2	10	0	0.6	5.1	0	0	0	0	0	1012.0	0.5	0.0	0.3		
22	8	05	09	80	97	3.5	93	6.3	2.4	-2.0	5.4	5.5	6.7	8.0	8.3	9.2	10	0	0.6	2.0	0	0	0	0	0	1016.5	0.5	0.0	2.2		
23	2	30	13	02	97	0.7	83	4.0	0.7	-2.2	3.4	3.8	5.6	7.1	7.8	9.1	10	0	1.9	5.6	0	0	0	0	0	1024.5	2.0	0.0	1.4		
24	8	32	02	02	97	1.2	97	4.5	-1.2	-4.5	2.8	2.9	4.4	6.1	7.1	8.9	X2	1	0.0	1.4	5	1	0	0	0	1012.5	0.0	6.5	0.5		
25	2	03	05	02	97	0.6	91	5.3	-0.2	-4.0	2.1	2.3	4.1	5.8	6.7	8.5	40	0	tr	5.4	0	0	0	0	0	1028.0	0.2	4.0	1.3		
26	8	33	02	02	97	2.2	80	7.9	-3.0	-6.8	2.2	2.2	3.0	5.2	6.2	8.2	X1	0	0.2	0.5	5	0	0	0	0	1025.5	0.3	6.5	0.7		
27	0	31	02	02	97	4.6	95	10.5	2.2	-1.5	3.4	3.8	4.9	5.5	5.9	8.0	10	0	0.0	4.6	0	0	0	0	0	1033.5	0.0	0.0	0.6		
28	8	27	02	02	97	5.7	75	10.6	3.3	-1.9	4.7	4.5	5.1	5.9	6.2	7.9	10	0	0.0	3.5	0	0	0	0	0	1032.5	0.0	0.0	1.1		
29	8	27	02	02	97	8.0	84	10.6	5.5	3.0	6.0	6.0	6.1	6.4	6.5	7.8	10	0	0.0	0.0	0	0	0	0	0	1029.0	0.0	0.0	0.5		
30	8	27	02	05	95	7.0	94	8.5	6.8	4.9	6.2	6.2	7.2	6.9	6.8	7.8	10	0	0.0	0.0	0	0	0	0	0	1028.5	0.0	0.0	0.7		
31	0	25	02	02	06	3.5	85	12.3	0.4	-3.5	4.3	4.3	6.0	6.8	7.0	7.9	10	0	0.0	7.4	0	0	0	0	0	1025.0	0.0	0.0	0.7		
Monthly means						7.3	88	10.5	4.9	1.8	6.3	6.4	7.0	7.6	7.8	8.7											1017.7				
Monthly totals																				67.3	73.5							62.7	17.0	32.6	
Highest values						13.0		14.1	10.7	9.5	9.8	10.0	9.9	9.4	9.2	9.2				12.2	7.4							7.6	6.5	2.4	
Lowest values						0.6	75	4.0	-3.0	-6.8	2.1	2.2	3.0	5.2	5.9	7.8															
1971-2000 monthly climatological averages						89	7.5	1.6	-0.7	3.5	3.7	4.5	5.1	5.4	6.6					60.4	49.0							1016.1	62.5	91.6	23.4

Key

DD: date

07GMT observations

N cloud cover (oktas, 9=obscured) dd wind direction (degrees/10)
ff wind speed (knots)
ww present weather code
1 cloud decreasing
2 sky not changing
3 cloud increasing
5 haze
25 recent rain
60 intermittent slight rain
61 continuous slight rain
63 continuous moderate rain
80 slight rain shower
VV visibility (00-50 metres/100, 94 very poor, 95 poor, 96 moderate, 97 good)
Soil temperatures are for 0700GMT beneath bare soil (5, 10, 20cm) or grass (30, 50, 100cm)

09GMT observations

Temp temperature (degC) RH relative humidity (%)
E state of ground (X1, X2 and X3 snow, 10 moist, 20 wet, 40 frozen) SS snow depth (cm)
Press air pressure (mb)

24 hour readings

Max maximum temperature (degC) beginning 09GMT Min minimum temperature (degC) ending 09GMT
Gmin grass minimum temperature (degC) ending 09GMT Rain precipitation beginning 09GMT
Sun sunshine (hours) sunrise-sunset Rain hrs hours of rainfall (>0.1mm/h) 09-09GMT
Fr. Hrs hours of air frost (00-24GMT) Pch Evap Piche evaporation (ml) beginning 09GMT

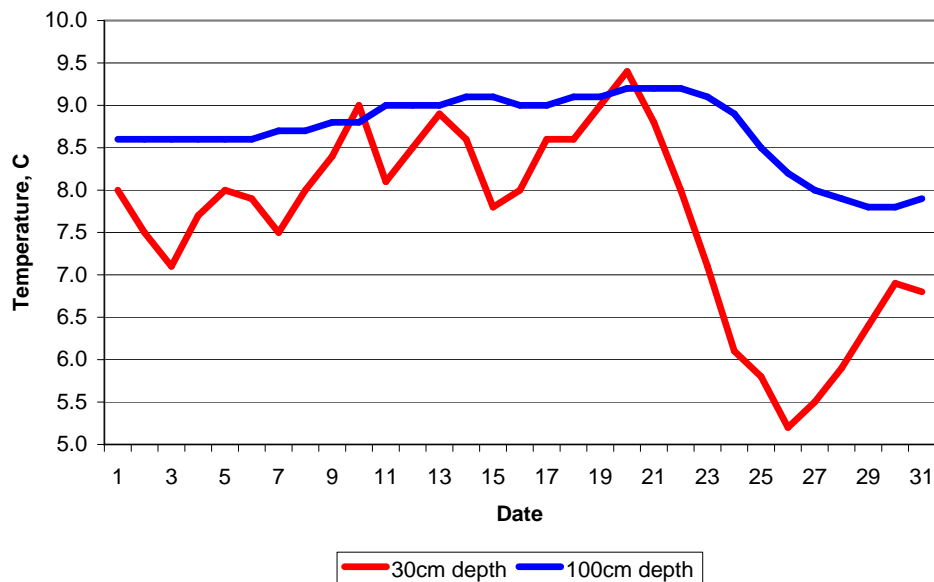
Days with

S snow(5) or sleet(1) falling L 50% snow cover at 09GMT H hail or ice pellets
T thunder heard G gale F fog at 09GMT

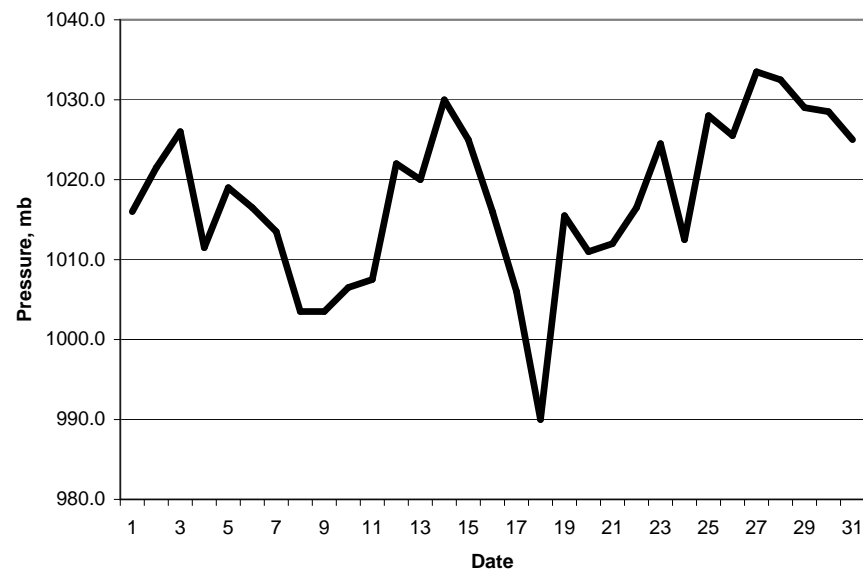
This information (and data for earlier months) is also available at

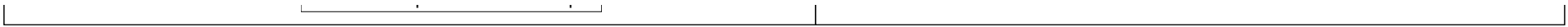
<http://www.met.rdg.ac.uk/~brugge>

Daily soil temperatures, 0700GMT

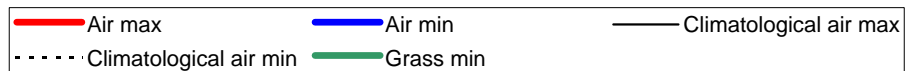
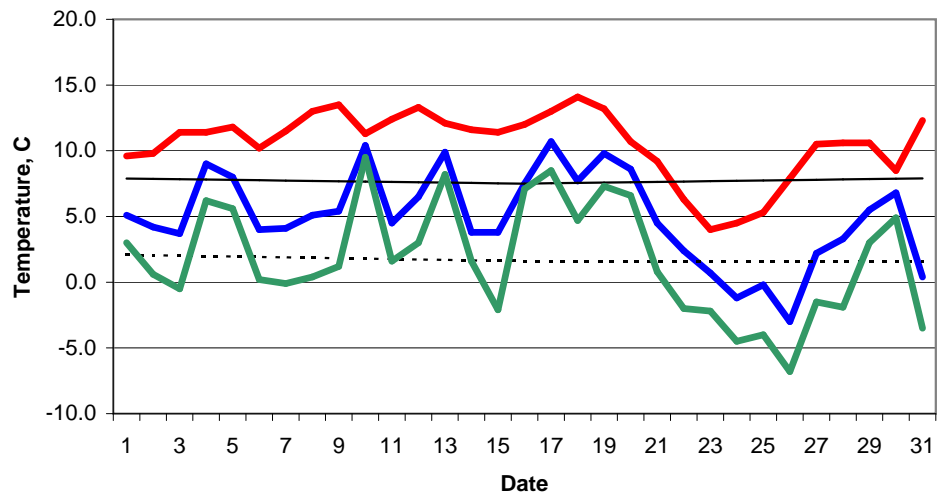


Mean sea level pressure, 0900GMT

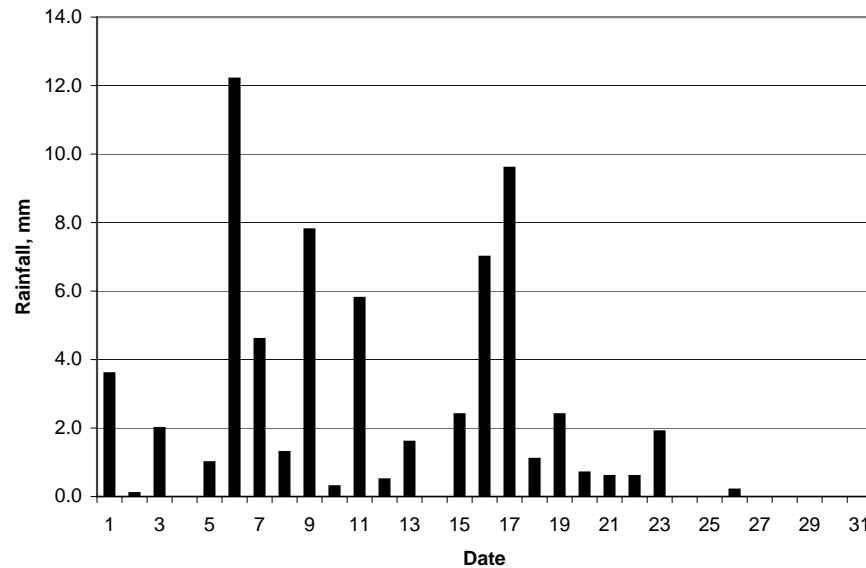




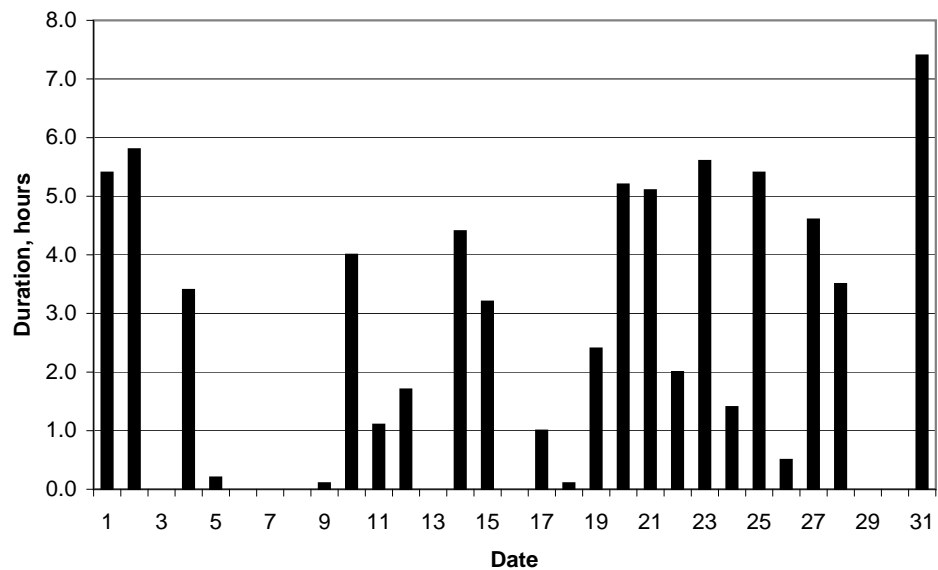
Daily temperature extremes



Daily rainfall



Daily sunshine



Daily evaporation

