

MAIDENHEAD METEOROLOGICAL OBSERVATIONS FOR JANUARY 2006

						0900GMT		Temperature			Soil temperatures (depth in cm)																		Rain	Fr.	Pch				
DD	N	dd	ff	ww	VV	Temp	RH	Max	Min	Gmin	5	10	20	30	50	100	E	SS	Rain	Sun	S	L	H	T	G	F	Press	hrs	hrs	Evap					
01	7	29	09	02	97	7.0	87	8.1	3.1	-0.6	4.4	3.8	3.9	4.6	4.7	6.4	10	0	0.0	0.3	0	0	0	0	0	0	999.5	0.0	0.0	1.0	Number of				
02	8	32	02	02	97	5.4	94	7.1	3.3	-1.1	4.4	3.9	4.4	5.0	5.0	6.5	10	0	tr	0.3	0	0	0	0	0	0	1022.5	0.0	0.0	0.1	days with				
03	8	27	05	20	96	6.6	96	9.4	5.1	2.4	4.5	4.4	4.1	5.2	5.3	6.6	10	0	0.8	0.0	0	0	0	0	0	0	1026.5	1.8	0.0	0.5	2006	normal			
04	8	36	02	02	96	7.0	91	7.0	6.6	3.5	5.6	5.3	5.6	5.9	5.6	6.6	10	0	tr	0.2	0	0	0	0	0	0	1028.5	0.0	0.0	0.6	Snow/sleet falling				
05	8	05	02	50	96	3.4	89	4.4	1.5	-2.4	4.0	3.9	4.8	5.5	5.6	6.8	10	0	0.1	0.8	1	0	0	0	0	0	1023.0	0.8	0.0	0.7	3	2.9			
06	8	04	02	02	97	3.0	89	4.0	2.0	0.6	3.3	3.3	4.1	5.5	5.5	6.7	10	0	0.9	0.7	0	0	0	0	0	0	1020.5	1.5	0.0	0.6	50% snow cover 09GMT				
07	8	04	05	68	94	1.5	98	4.2	1.2	-1.5	3.9	2.9	3.9	5.0	5.2	6.6	10	0	0.8	0.0	5	0	0	0	0	0	1024.5	2.5	0.0	0.2	0	1.7			
08	8	06	02	02	96	4.2	92	5.0	1.3	-0.9	3.7	3.3	3.9	4.6	5.0	6.6	10	0	5.7	0.0	0	0	0	0	0	0	1023.5	9.0	0.0	0.2	Hail or ice pellets				
09	8	13	02	02	94	5.0	96	7.4	4.0	3.0	4.4	3.9	4.4	5.0	5.1	6.6	10	0	0.0	0.0	0	0	0	0	0	0	1025.5	0.0	0.0	0.6	0	0.4			
10	7	21	09	02	97	7.4	88	10.0	4.3	1.0	4.4	4.4	4.7	5.1	5.2	6.5	10	0	1.4	0.0	0	0	0	0	0	0	1023.5	3.0	0.0	1.2	Thunder				
11	8	22	09	60	96	10.0	96	10.3	7.4	5.0	6.6	6.4	5.8	5.5	5.4	6.5	10	0	0.3	3.9	0	0	0	0	0	0	1019.5	1.0	0.0	0.4	0	0.4			
12	1	14	02	02	97	-1.6	97	6.7	-2.3	-5.0	2.7	2.5	4.2	5.5	5.4	6.8	40	0	0.0	2.6	0	0	0	0	0	0	1029.5	0.0	8.5	0.7	Gale				
13	7	08	02	02	97	6.7	86	8.2	-1.6	-4.9	4.9	4.6	4.9	5.4	5.5	6.6	10	0	0.0	0.1	0	0	0	0	0	0	1022.0	0.0	0.0	0.8	0	0.6			
14	8	20	05	02	97	7.4	90	9.1	6.7	5.1	6.1	5.6	5.7	5.9	5.6	6.6	10	0	2.5	0.0	0	0	0	0	0	0	1020.0	3.2	0.0	0.5	Fog at 09GMT				
15	8	21	02	02	97	8.5	94	9.6	6.6	3.9	6.1	6.0	6.0	6.1	5.8	6.6	10	0	tr	0.6	0	0	0	0	0	0	1015.5	0.0	0.0	0.5	0	2.6			
16	8	10	09	02	97	7.9	95	9.8	6.5	2.7	6.3	6.0	6.0	6.4	6.0	6.6	10	0	3.1	0.2	0	0	0	0	0	0	1009.5	3.4	0.0	0.5	Air frost				
17	8	27	05	02	96	7.9	96	10.5	5.3	1.3	6.2	5.9	6.2	6.5	6.2	6.9	10	0	0.8	1.4	0	0	0	0	0	0	1003.0	1.5	0.0	0.6	7	10.2			
18	8	27	05	02	96	10.5	96	13.0	6.2	2.1	6.6	6.1	6.3	6.5	6.3	7.0	10	0	0.1	1.0	0	0	0	0	0	0	1013.5	0.1	0.0	0.4	Ground frost				
19	8	22	02	02	96	10.5	97	11.2	8.0	4.1	7.8	7.3	7.1	7.0	6.7	7.0	10	0	tr	0.0	0	0	0	0	0	0	1019.5	0.0	0.0	0.8	17	17.4			
20	8	25	19	50	96	8.9	95	9.5	8.9	8.2	8.3	7.7	7.6	7.5	6.8	7.2	10	0	0.3	5.9	0	0	0	0	0	0	1014.0	1.2	0.0	1.3	0.2mm precipitation				
21	6	27	05	02	97	5.8	87	10.2	2.5	-1.2	4.5	4.6	5.9	6.9	6.9	7.4	10	0	0.0	6.3	0	0	0	0	0	0	1026.5	0.0	0.0	0.7	10	15.5			
22	0	18	02	02	96	-1.4	94	10.3	-2.2	-4.5	2.3	2.9	4.7	5.4	6.6	7.4	40	0	0.0	3.6	0	0	0	0	0	0	1036.5	0.0	8.2	0.9	1.0mm precipitation				
23	8	15	02	02	96	3.5	83	3.7	-1.4	-3.5	3.8	3.6	4.6	5.7	6.3	7.3	40	0	0.0	0.0	0	0	0	0	0	0	1036.0	0.0	0.0	0.7	4	11.2			
24	1	09	02	02	94	-1.0	96	5.1	-3.3	-5.9	0.9	1.7	3.7	5.3	5.6	7.1	10	0	0.0	7.6	0	0	0	0	0	0	1032.0	0.0	6.8	0.3	5.0mm precipitation				
25	8	33	02	02	95	0.3	98	7.0	-2.0	-5.8	1.1	1.6	3.0	4.7	5.3	7.0	40	0	tr	2.0	0	0	0	0	0	0	1027.5	0.0	7.8	0.7	1	4.7			
26	3	36	02	02	96	1.2	86	5.9	0.2	-4.5	1.6	1.6	3.1	4.0	5.0	6.8	40	0	tr	5.4	0	0	0	0	0	0	1027.0	0.0	0.0	2.0	No sunshine				
27	1	36	05	02	97	1.2	83	4.9	0.9	-4.0	1.7	2.0	3.4	4.5	4.8	6.8	10	0	tr	2.0	1	0	0	0	0	0	1026.5	0.0	0.0	1.2	9	13.4			
28	2	05	02	02	96	0.0	93	5.8	-0.6	-3.6	1.1	1.6	3.0	4.3	4.7	6.4	40	0	0.0	7.6	0	0	0	0	0	0	1026.5	0.0	5.2	1.5	Generally very				
29	0	04	09	02	96	1.9	84	7.0	0.0	-3.5	1.0	1.1	2.4	4.0	4.5	6.4	40	0	0.0	7.1	0	0	0	0	0	0	1031.0	0.0	0.0	1.7	anticyclonic and dry.				
30	8	04	09	02	97	4.6	82	6.2	1.0	-2.5	3.3	2.8	3.3	4.0	4.4	6.2	10	0	0.0	0.0	0	0	0	0	0	0	1032.0	0.0	0.0	1.2	Rather dull for the first 20				
31	8	09	02	02	06	4.6	89	6.7	4.0	2.5	3.4	3.3	3.9	4.6	4.5	6.2	10	0	0.0	4.5	0	0	0	0	0	0	1028.0	0.0	0.0	0.9	days then brighter with				
Monthly means						4.8	92	7.7	2.7	-0.3	4.2	4.0	4.7	5.4	5.5	6.7												1023.0				lower daytime			
Monthly totals																					16.8	64.1								29.0	36.5	24.0	temperatures. No		
Highest values																																	measurable rain after the		
Lowest values						10.5		13.0	8.9	8.2	8.3	7.7	7.6	7.5	6.9	7.4					5.7	7.6								9.0	8.5	2.0	20th. Only slight amounts		
1971-2000 monthly climatological averages						-1.6	82	3.7	-3.3	-5.9	0.9	1.1	2.4	4.0	4.4	6.2																		of snow.	
						89	7.5	1.6	-0.7	3.5	3.7	4.5	5.1	5.4	6.6					60.4	49.0								1016.1	62.5	91.6	23.4			

Key

DD: date

07GMT observations

N cloud cover (oktas, 9=obscured) dd wind direction (degrees/10)
ff wind speed (knots)
ww present weather code
2 sky not changing 60 intermittent slight rain
3 cloud increasing 61 continuous slight rain
20 recent drizzle 63 continuous moderate rain
50 intermittent slight drizzle 68 slight sleet
VV visibility (00-50 metres/100, 94 very poor, 95 poor, 96 moderate, 97 good)
Soil temperatures are for 0700GMT beneath bare soil (5, 10, 20cm) or grass (30, 50, 100cm)

09GMT observations

Temp temperature (degC) RH relative humidity (%)
E state of ground (X1 and X3 snow, 10 moist, 20 wet, 40 frozen) SS snow depth (cm)
Press air pressure (mb)

24 hour readings

Max maximum temperature (degC) beginning 09GMT Min minimum temperature (degC) ending 09GMT
Gmin grass minimum temperature (degC) ending 09GMT Rain precipitation beginning 09GMT
Sun sunshine (hours) sunrise-sunset Rain hrs hours of rainfall (>0.1mm/h) 09-09GMT
Fr. Hrs hours of air frost (00-24GMT) Pch Evap Piche evaporation (ml) beginning 09GMT

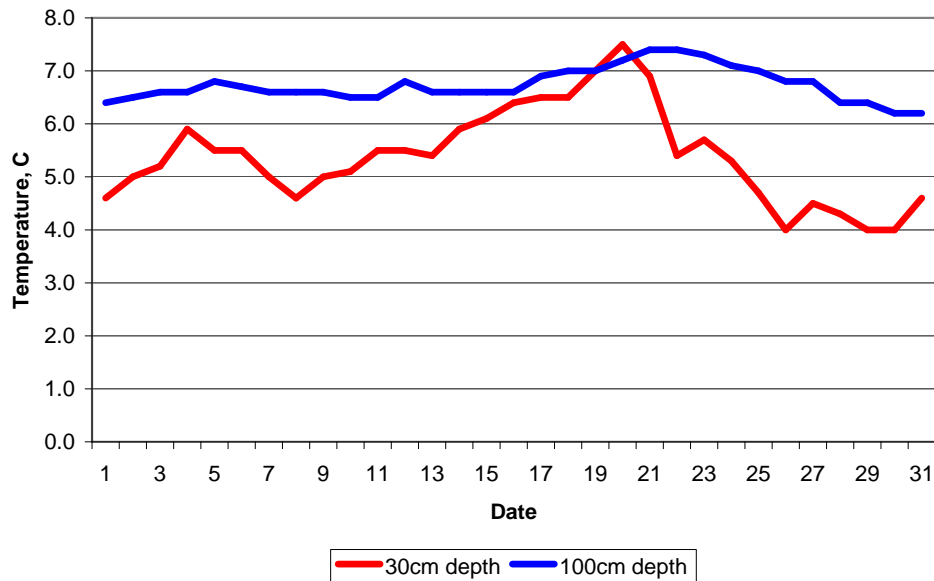
Days with

S snow(5) or sleet(1) falling L 50% snow cover at 09GMT H hail or ice pellets
T thunder heard G gale F fog at 09GMT

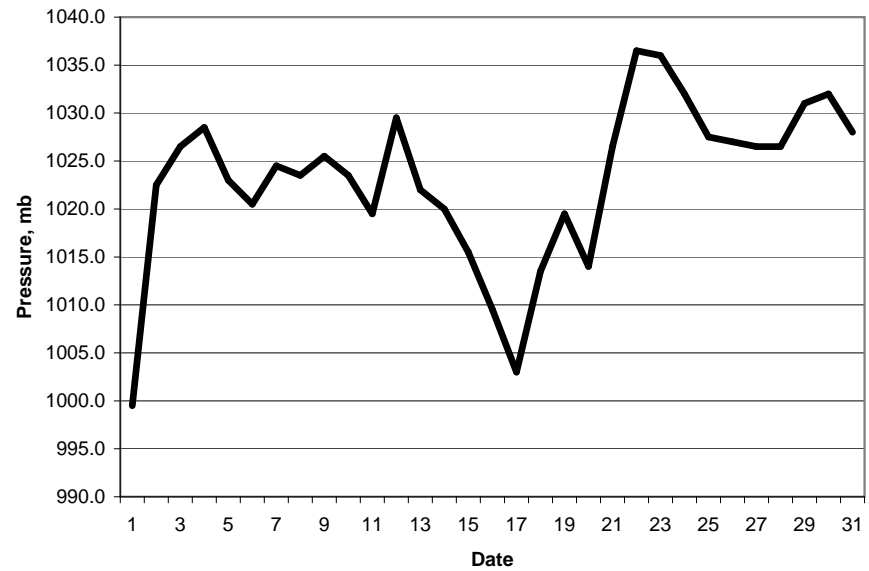
This information (and data for earlier months) is also available at

<http://www.met.rdg.ac.uk/~brugge>

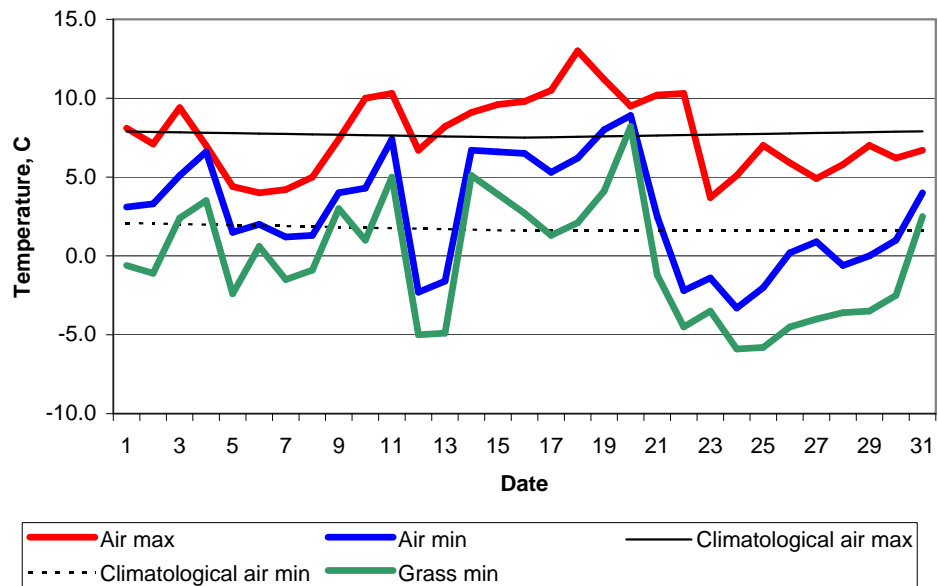
Daily soil temperatures, 0700GMT



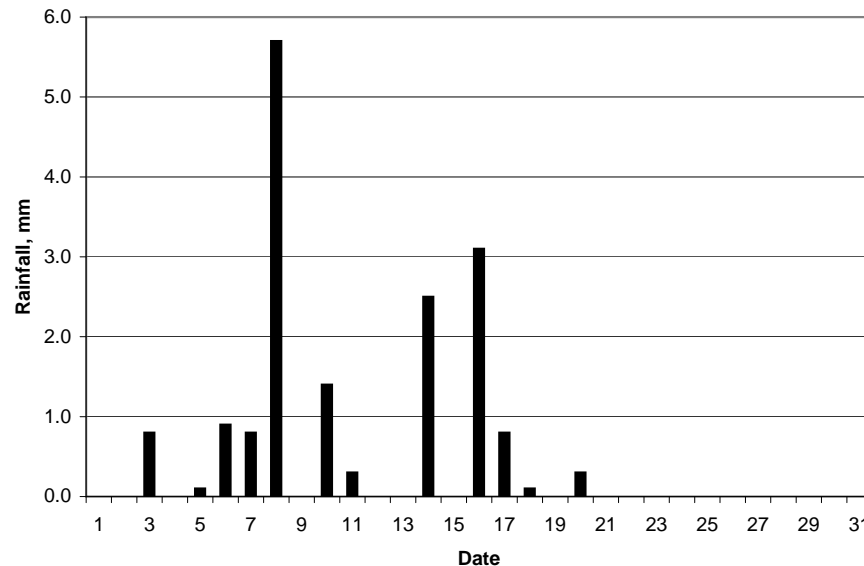
Mean sea level pressure, 0900GMT



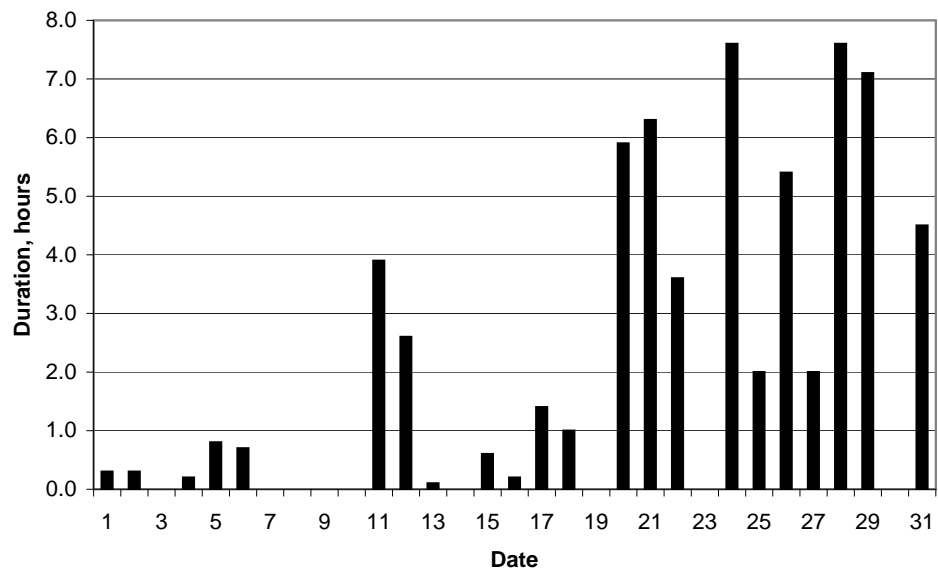
Daily temperature extremes



Daily rainfall



Daily sunshine



Daily evaporation

