

MAIDENHEAD METEOROLOGICAL OBSERVATIONS FOR JANUARY 2005

DD	N	dd	ff	ww	VV	0900GMT Temp	RH	Temperature Max	Min	Gmin	Soil temperatures (depth in cm)						E	SS	Rain	Sun	S	L	H	T	G	F	Press	Rain hrs	Fr. hrs	Pch Evap	
01	7	21	05	03	97	8.0	86	11.5	4.3	-0.9	5.6	5.5	5.8	6.3	6.3	7.4	10	0	1.8	0.1	0	0	0	0	0	0	1025.0	1.8	0.0	1.2	Number of days with 2005 normal Snow/sleet falling 2 2.9 50% snow cover 09GM 0 1.7 Hail or ice pellets 0 0.4 Thunder 0 0.4 Gale 0 0.6 Fog at 09GMT 0 2.6 Air frost 2 10.2 Ground frost 19 17.4 0.2mm precipitation 14 15.5 1.0mm precipitation 9 11.2 5.0mm precipitation 0 4.7 No sunshine 9 13.4 Generally very anticyclonic, mild and dry. The warmest January since 1993, while the lowest minimum temperature was the highest in January since before 1953. 1983 was the last January with as few as two air frosts. The driest January
02	0	25	09	02	97	3.2	83	7.8	2.5	-1.9	3.6	4.0	5.5	6.4	6.4	7.5	10	0	0.0	5.7	0	0	0	0	0	1026.0	0.0	0.0	0.9		
03	7	25	02	02	97	3.4	96	10.1	2.8	-1.5	3.3	3.4	4.5	5.7	6.3	7.5	10	0	tr	2.7	0	0	0	0	0	1034.5	0.0	0.0	1.2		
04	8	25	13	02	97	10.4	81	11.3	3.4	0.2	6.1	6.1	6.0	6.1	6.3	7.5	10	0	1.2	0.0	0	0	0	0	0	1024.5	0.8	0.0	0.4		
05	6	22	02	02	96	1.6	87	8.4	1.3	-3.7	3.5	3.8	5.3	6.2	6.5	7.5	10	0	0.1	0.0	0	0	0	0	0	1026.5	0.1	0.0	0.5		
06	5	23	05	02	96	4.3	96	12.6	1.6	-1.9	4.0	4.3	5.2	6.1	6.5	7.5	10	0	tr	1.4	0	0	0	0	0	1032.0	0.0	0.0	1.1		
07	8	24	13	02	97	12.9	81	14.2	4.3	-0.9	8.3	7.5	6.9	6.5	6.6	7.5	10	0	2.5	1.4	0	0	0	0	0	1022.5	2.0	0.0	2.6		
08	3	25	24	01	97	8.0	75	8.9	8.0	5.2	7.6	7.6	5.3	7.5	7.1	7.6	10	0	0.3	5.3	0	0	0	0	0	1010.5	0.2	0.0	1.5		
09	6	25	05	02	97	6.7	92	13.0	5.3	0.4	4.9	4.9	6.0	7.0	7.2	7.8	10	0	0.7	0.0	0	0	0	0	0	1024.0	0.7	0.0	1.3		
10	8	23	13	60	97	12.2	89	12.2	6.7	4.1	8.6	8.4	7.5	7.4	7.3	7.9	10	0	4.5	0.0	0	0	0	0	0	1015.0	4.3	0.0	0.2		
11	7	18	05	02	97	9.2	97	12.4	4.2	0.4	6.3	6.2	7.0	7.6	7.6	7.9	10	0	1.1	0.0	0	0	0	0	0	1019.5	1.8	0.0	1.2		
12	3	22	09	02	97	5.9	86	9.5	5.6	2.6	5.6	6.0	7.0	7.5	7.6	8.0	10	0	0.0	6.9	0	0	0	0	0	1021.0	0.0	0.0	1.0		
13	1	27	02	02	97	2.3	95	8.1	1.5	-2.9	3.4	4.0	5.6	6.9	7.4	8.0	10	0	0.0	4.6	0	0	0	0	0	1031.0	0.0	4.8	0.3		
14	1	14	02	02	96	0.7	98	8.3	-0.8	-4.4	2.5	3.0	4.6	6.2	6.9	8.0	40	0	0.1	4.1	0	0	0	0	0	1030.5	0.1	0.0	1.1		
15	8	18	02	02	96	8.1	95	9.1	0.7	-3.0	6.2	5.6	5.6	6.1	6.6	7.9	10	0	0.1	0.2	0	0	0	0	0	1026.5	0.1	0.0	0.3		
16	8	15	02	02	97	5.1	94	11.4	2.5	-1.2	4.4	4.4	5.2	6.2	6.5	7.7	10	0	0.0	2.3	0	0	0	0	0	1023.5	0.0	0.0	0.7		
17	7	18	09	02	97	9.3	82	10.0	3.5	-1.2	6.6	5.3	5.6	6.2	6.6	7.6	10	0	2.5	0.0	0	0	0	0	0	1017.5	3.9	0.0	0.6		
18	8	22	05	02	97	3.0	92	7.0	2.1	0.8	4.7	5.0	6.1	6.6	6.6	7.6	10	0	0.0	4.4	0	0	0	0	0	1000.5	0.0	0.0	1.4		
19	4	27	09	02	97	5.2	79	11.7	3.0	-0.8	3.5	3.8	5.6	6.0	6.5	7.6	10	0	0.1	3.7	0	0	0	0	0	1015.0	0.1	0.0	0.8		
20	8	25	05	02	97	11.7	89	12.9	5.2	1.8	6.2	6.1	6.0	6.4	6.5	7.5	10	0	0.6	0.2	0	0	0	0	0	1014.0	0.3	0.0	1.6		
21	3	22	05	01	97	5.9	80	9.1	5.5	1.4	5.6	6.0	6.9	7.0	6.8	7.6	10	0	0.0	1.0	0	0	0	0	0	1018.5	0.0	0.0	1.2		
22	1	36	02	02	97	0.3	96	6.0	-0.4	-4.1	3.6	4.1	5.9	6.6	6.8	7.6	10	0	1.2	2.5	1	0	0	0	0	1023.0	4.0	4.0	0.9		
23	0	36	09	02	97	2.0	86	6.1	0.3	-3.0	2.9	3.3	5.4	6.1	6.5	7.6	10	0	0.0	7.4	0	0	0	0	0	1031.5	0.0	0.0	1.4		
24	1	01	13	02	97	2.3	82	5.1	1.5	-1.9	2.3	2.8	4.5	5.6	6.3	7.5	10	0	0.6	4.7	5	0	0	0	0	1032.5	0.4	0.0	1.1		
25	8	03	05	02	97	3.4	88	5.1	1.8	-0.1	3.2	3.1	4.3	5.1	5.9	7.5	10	0	0.3	0.5	0	0	0	0	0	1032.0	0.5	0.0	1.0		
26	6	34	05	02	97	1.7	77	5.3	0.3	-2.8	1.9	2.2	4.0	5.0	5.5	7.2	10	0	0.1	5.4	0	0	0	0	0	1036.5	0.2	0.0	0.7		
27	8	36	09	02	97	5.3	84	7.0	1.7	-1.0	2.9	3.2	4.0	4.8	5.5	7.1	10	0	2.5	0.0	0	0	0	0	0	1029.5	7.2	0.0	0.9		
28	8	04	13	02	97	6.3	85	7.1	5.3	2.1	4.8	4.4	4.0	5.2	5.5	7.0	10	0	2.0	0.0	0	0	0	0	0	1022.5	5.2	0.0	1.0		
29	7	33	02	02	97	5.5	92	7.6	4.8	2.6	4.8	4.6	5.1	5.5	5.6	6.9	10	0	0.1	0.0	0	0	0	0	0	1029.0	0.3	0.0	0.7		
30	8	27	05	02	97	6.5	86	8.5	5.5	4.1	5.4	5.4	5.5	5.9	5.7	6.9	10	0	0.0	0.5	0	0	0	0	0	1035.0	0.0	0.0	0.7		
31	8	32	05	02	06	8.3	81	10.4	2.7	-1.0	5.1	4.8	5.2	5.9	5.9	7.0	10	0	0.1	0.9	0	0	0	0	0	1034.5	0.2	0.0	1.2		
Monthly means						5.8	87	9.3	3.1	-0.4	4.8	4.8	5.5	6.2	6.5	7.5											1024.6				
Monthly totals																			22.5	65.9								34.2	8.8	30.7	
Highest values																															
Lowest values						12.9		14.2	8.0	5.2	8.6	8.4	7.5	7.6	7.6	8.0			4.5	7.4								7.2	4.8	2.6	
1971-2000 monthly climatological averages						0.3	75	5.1	-0.8	-4.4	1.9	2.2	4.0	4.8	5.5	6.9															
						89	7.5	1.6	-0.7	3.5	3.7	4.5	5.1	5.4	6.6			60.4	49.0								1016.1	62.5	91.6	23.4	

Key

DD: date

07GMT observations

N cloud cover (oktas, 9=obscured) dd wind direction (degrees/10)

ff wind speed (knots)

ww present weather code

1 cloud decreasing

2 sky not changing

3 cloud increasing

20 recent drizzle

21 recent rain

41 fog patches

44,45 fog

50 intermittent slight drizzle

60 intermittent slight rain

61 continuous slight rain

63 continuous moderate rain

VV visibility (00-50 metres/100, 94 very poor, 95 poor, 96 moderate, 97 good)

Soil temperatures are for 0700GMT beneath bare soil (5, 10, 20cm) or grass (30, 50, 100cm)

09GMT observations

Temp temperature (degC) RH relative humidity (%)

E state of ground (X1 and X3 snow, 10 moist, 20 wet, 40 frozen) SS snow depth (cm)

Press air pressure (mb)

24 hour readings

Max maximum temperature (degC) beginning 09GMT Min minimum temperature (degC) ending 09GMT

Gmin grass minimum temperature (degC) ending 09GMT Rain precipitation beginning 09GMT

Sun sunshine (hours) sunrise-sunset Rain hrs hours of rainfall (>0.1mm/h) 09-09GMT

Fr. Hrs hours of air frost (00-24GMT) Pch Evap Piche evaporation (ml) beginning 09GMT

Days with

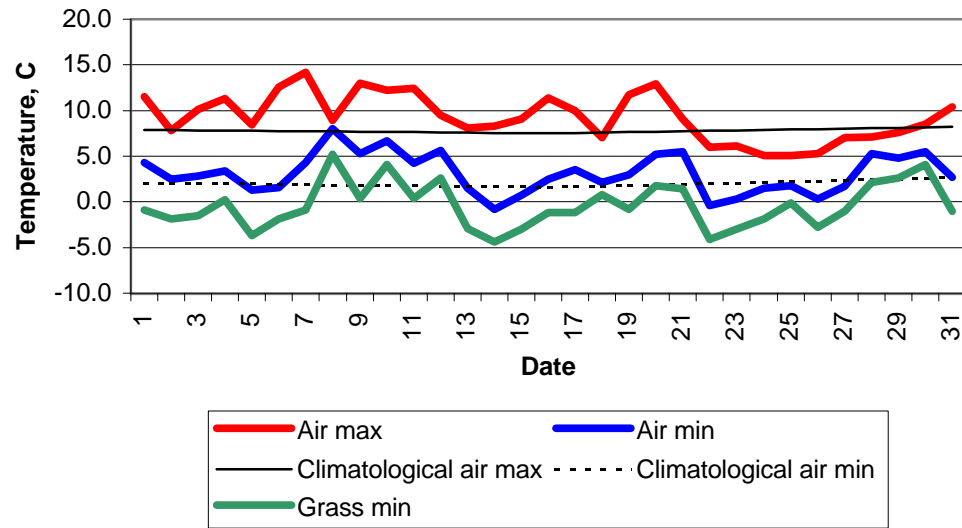
S snow(5) or sleet(1) falling L 50% snow cover at 09GMT H hail or ice pellets

T thunder heard G gale F fog at 09GMT

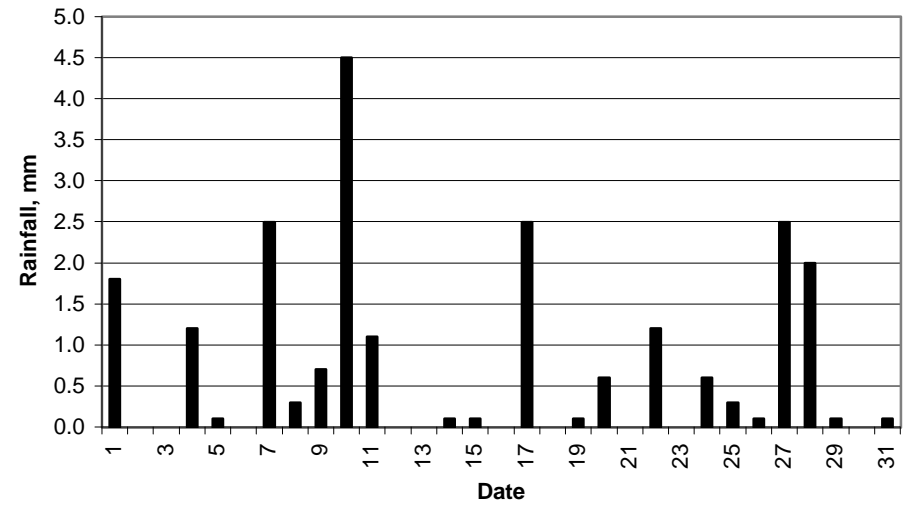
This information (and data for earlier months) is also available at

<http://www.met.rdg.a.uk/~brugge>

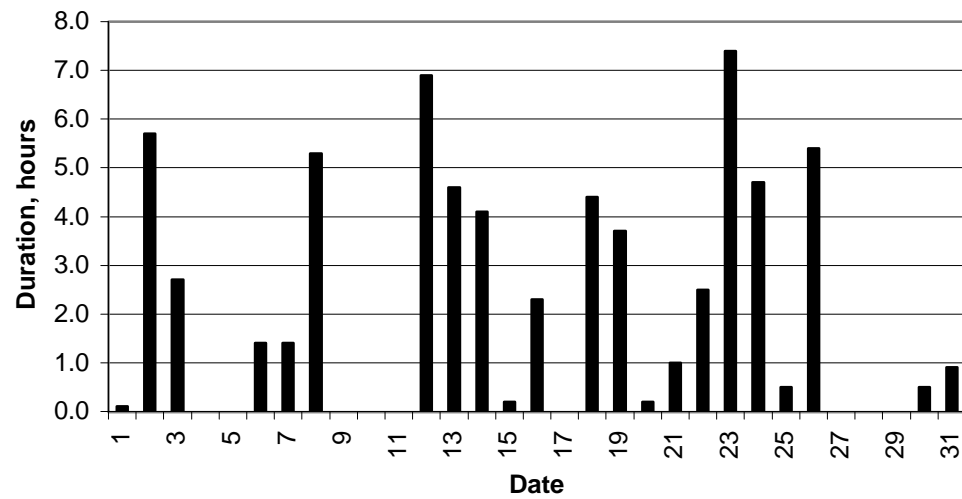
### Daily temperature extremes



### Daily rainfall



### Daily sunshine



### Daily evaporation

