

MAIDENHEAD METEOROLOGICAL OBSERVATIONS FOR FEBRUARY 2019

DD	N	dd	ff	ww	VV	0900GMT		Temperature				Soil temperatures (depth in cm)						E	SS	Rain	Sun	S	L	H	T	G	F	Press	Rain hrs	Fr. hrs	Pch Evap			
						Temp	RH	Max	Min	Gmin	5	10	20	30	50	100																		
01	8	05	05	70	94	1.2	85	2.3	-3.6	-3.3	1.1	0.9	2.6	3.4	4.0	6.4	X7	7	4.1	0.0	5	1	0	0	0	0	985.5	5.0	0.0	0.5	Number of days with 2019 normal Snow/sleet falling 1 3.7 50% snow cover 09GMT 2 1.8 Hail or ice pellets 0 0.6 Thunder 0 0.3 Gale 0 0.2 Fog at 09GMT 5 1.7 Air frost 10 9.3 Ground frost 21 17.2 0.2mm precipitation 11 12.1 1.0mm precipitation 11 9.4 5.0mm precipitation 2 3.2 No sunshine 6 8.1 19.9C on the 26th was the highest February temperature locally since before 1953. After the first four days most daily maximum temperatures were above average for the time of year. The month was milder, sunnier and drier than normal; snowfall on the 1st lay for three mornings and was the only major snow event of the winter.			
02	1	36	02	02	97	0.4	80	4.6	0.2	-2.1	1.2	1.1	2.6	3.3	3.9	6.3	X2	5	0.0	7.0	0	1	0	0	0	1006.0	0.0	0.0	0.6					
03	1	00	00	02	97	-3.6	79	7.0	-5.3	-9.4	0.7	0.8	2.0	3.1	3.7	6.1	X1	1	5.3	5.5	0	0	0	0	0	1024.5	5.0	10.0	0.9					
04	8	23	09	60	97	6.6	88	9.3	-3.6	-6.0	3.6	2.9	2.8	3.2	3.6	5.9	20	0	1.2	0.0	0	0	0	0	0	1015.5	1.2	0.0	0.1					
05	8	18	02	02	96	5.8	93	9.4	4.0	-1.4	4.2	3.9	4.1	4.1	4.0	5.8	10	0	5.7	0.0	0	0	0	0	0	1024.0	6.2	0.0	0.1					
06	6	27	02	10	96	6.8	93	10.4	5.3	-0.1	5.3	4.8	5.2	5.0	4.5	5.9	10	0	3.3	1.0	0	0	0	0	0	1020.0	4.5	0.0	0.8					
07	7	22	09	02	97	6.5	72	10.1	5.3	2.0	5.1	5.0	5.5	5.6	5.2	6.0	10	0	1.8	6.3	0	0	0	0	0	1005.5	1.5	0.0	1.2					
08	8	22	09	60	97	9.5	88	11.0	6.3	0.5	6.8	6.1	5.9	5.6	5.3	6.2	10	0	4.3	0.0	0	0	0	0	0	1000.0	4.7	0.0	1.1					
09	2	22	13	02	97	7.0	69	11.1	6.3	2.5	4.8	4.8	5.7	6.0	5.7	6.4	10	0	1.8	3.9	0	0	0	0	0	1001.0	3.5	0.0	1.3					
10	8	22	05	50	96	5.6	87	7.5	5.6	2.0	5.4	5.5	6.1	6.1	5.3	6.6	10	0	2.0	1.9	0	0	0	0	0	993.0	1.8	0.0	0.6					
11	6	31	02	01	97	2.8	84	10.2	1.8	-2.2	2.9	3.1	4.7	5.8	5.9	6.7	10	0	tr	2.2	0	0	0	0	0	1024.5	0.0	0.0	0.7					
12	9	00	00	45	03	3.8	93	11.2	-1.0	-4.4	3.3	3.1	4.4	5.5	5.7	6.6	10	0	0.0	2.4	0	0	0	0	1	1034.0	0.0	2.4	0.8					
13	7	18	02	03	97	6.3	89	12.1	3.8	-1.1	5.0	4.9	5.5	5.8	5.7	6.7	10	0	0.0	3.6	0	0	0	0	0	1034.0	0.0	0.0	0.8					
14	9	00	00	45	03	0.2	86	12.9	-1.2	-4.5	2.2	3.7	4.5	5.8	5.8	6.7	10	0	0.0	7.0	0	0	0	0	1	1033.5	0.0	5.5	0.6					
15	9	00	00	45	02	0.5	87	14.3	-1.7	-4.9	1.8	2.1	3.8	5.4	5.6	6.7	10	0	0.0	6.6	0	0	0	0	1	1029.0	0.0	7.2	1.1					
16	8	00	00	02	95	5.5	91	12.6	0.3	-1.0	4.1	3.6	4.1	5.1	5.4	6.6	10	0	0.0	0.0	0	0	0	0	0	1024.5	0.0	0.0	0.3					
17	1	13	02	02	96	4.1	91	14.6	-0.2	-1.5	4.3	4.6	6.1	6.0	5.7	6.6	10	0	0.0	5.1	0	0	0	0	0	1015.0	0.0	0.5	0.0					
18	8	18	02	02	96	7.3	91	9.5	4.1	-0.5	5.5	5.4	5.0	6.5	6.1	6.6	10	0	1.3	0.0	0	0	0	0	0	1015.0	2.0	0.0	0.3					
19	1	22	02	02	96	2.4	88	12.2	-0.2	-3.5	2.7	3.2	6.3	6.1	6.2	6.8	10	0	0.1	6.8	0	0	0	0	0	1019.5	0.1	4.0	1.0					
20	8	18	02	02	97	8.6	79	12.6	2.4	1.0	6.4	6.1	6.5	6.4	6.1	6.9	10	0	tr	3.1	0	0	0	0	0	1020.0	0.0	0.0	1.1					
21	8	22	05	02	97	9.7	86	14.9	4.4	0.0	6.6	6.2	7.4	6.7	6.4	6.9	10	0	tr	5.4	0	0	0	0	0	1025.5	0.0	0.0	0.6					
22	9	00	00	43	02	6.6	91	13.8	6.5	0.1	6.8	6.7	6.6	7.0	6.6	7.0	10	0	tr	4.6	0	0	0	0	1	1036.0	0.0	0.0	0.5					
23	9	09	02	43	03	7.7	92	16.3	3.8	-1.0	6.7	6.2	6.0	6.9	6.7	7.1	10	0	0.0	5.0	0	0	0	0	1	1035.5	0.0	0.0	0.9					
24	1	09	02	02	97	4.9	91	16.7	0.7	-2.5	3.8	4.2	5.2	7.0	6.8	7.2	10	0	0.0	8.9	0	0	0	0	0	1026.0	0.0	0.0	1.8					
25	1	09	02	03	97	4.2	89	18.9	-0.6	-3.0	2.9	3.4	5.3	6.6	6.7	7.3	10	0	0.0	9.4	0	0	0	0	0	1037.0	0.0	3.5	2.3					
26	0	13	02	02	96	6.1	79	19.9	-0.1	-2.7	3.2	3.4	5.5	6.6	6.6	7.4	10	0	0.0	9.5	0	0	0	0	0	1034.5	0.0	1.0	2.6					
27	0	18	02	02	96	4.8	99	18.3	0.0	-2.6	3.9	3.8	5.5	6.6	6.7	7.3	10	0	0.0	9.2	0	0	0	0	0	1027.0	0.0	0.0	1.2					
28	8	27	02	02	95	8.3	98	12.6	0.8	-2.0	6.1	5.6	6.0	6.8	6.7	7.3	10	0	2.5	0.3	0	0	0	0	0	1017.0	1.8	0.0	0.5					
Monthly means						5.0	87	12.0	1.6	-1.8	4.2	4.1	5.0	5.6	5.6	6.6												1020.1						
Monthly totals																						33.4	114.7							37.3	34.1	24.3		
Highest values						9.7		19.9	6.5	2.5	6.8	6.7	7.4	7.0	6.8	7.4					5.7	9.5							6.2	10.0	2.6			
Lowest values						-3.6	69	2.3	-5.3	-9.4	0.7	0.8	2.0	3.1	3.6	5.8																		
1981-2010 monthly climatological averages						88	8.5	1.8	-1.2	3.7	3.8	4.7	5.2	5.3	6.3							43.7	77.8						1017.8	48.7	82.9	29.7		

DD: date

07GMT observations

N	cloud cover (oktas, 9=obscured)	dd	wind direction (degrees/10)
ff	wind speed (knots)		
ww	present weather code		
1	cloud decreasing	50	slight drizzle
2	sky not changing	60	intermittent slight rain
3	cloud increasing	61	continuous slight rain
21	recent rain	71	continuous slight snow
25	recent rain shower	95	light thunderstorm

VV visibility (00-50 metres/100, 94 very poor, 95 poor, 96 moderate, 97 good)

Soil temperatures are for 0700GMT beneath bare soil (5, 10, 20cm) or grass (30, 50, 100cm)

09GMT observations

Temp	temperature (degC)	RH	relative humidity (%)
E	state of ground (X0 hail, X1 to X9 snow lying, 10 moist, 20 wet, 40 frozen)		
SS	snow depth (cm)		
Press	air pressure (mb)		

24 hour readings

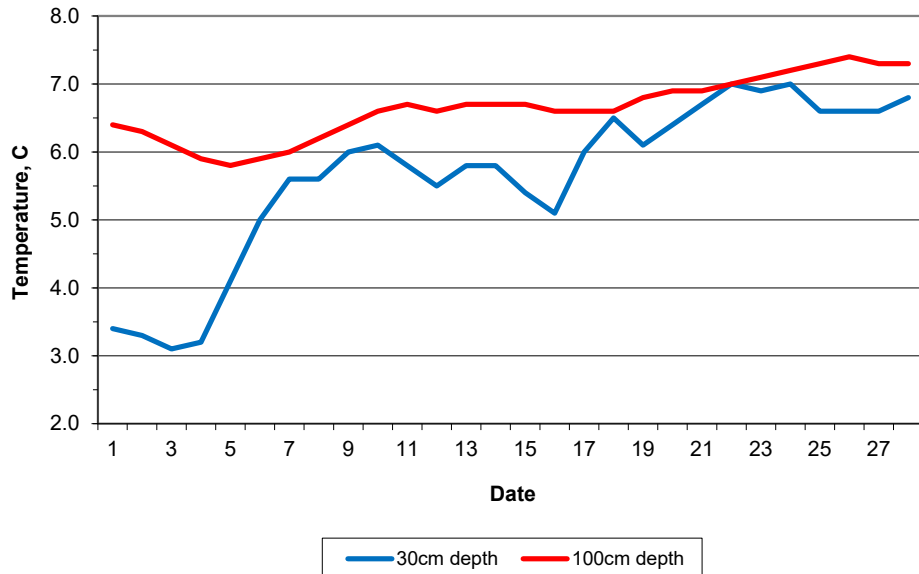
Max	maximum temperature (degC) beginning 09GMT	Min	minimum temperature (degC) ending 09GMT
Gmin	grass minimum temperature (degC) ending 09GMT	Rain	precipitation beginning 09GMT
Sun	sunshine (hours) sunrise-sunset	Rain hrs	hours of rainfall (>0.1mm/h) 09-09GMT
Fr. Hrs	hours of air frost (00-24GMT)	Pch Evap	Piche evaporation (ml) beginning 09GMT

Days with

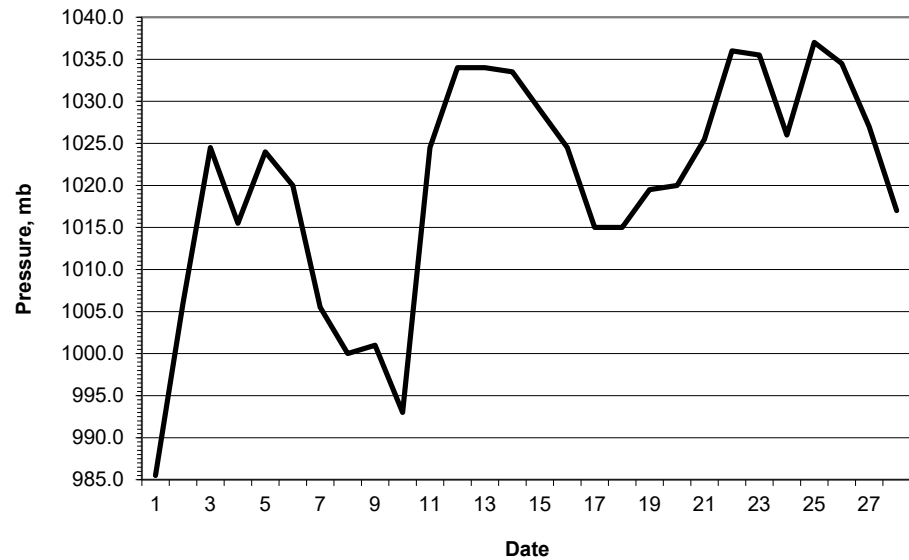
S	snow(5) or sleet(1) falling	L	50% snow cover at 09GMT	H	hail or ice pellets
T	thunder heard	G	gale	F	fog at 09GMT

This information (and data for earlier months) is also available at <http://www.met.reading.ac.uk/~brugge>

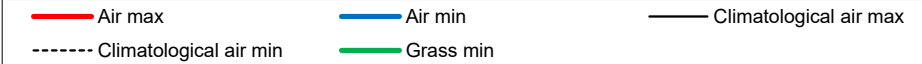
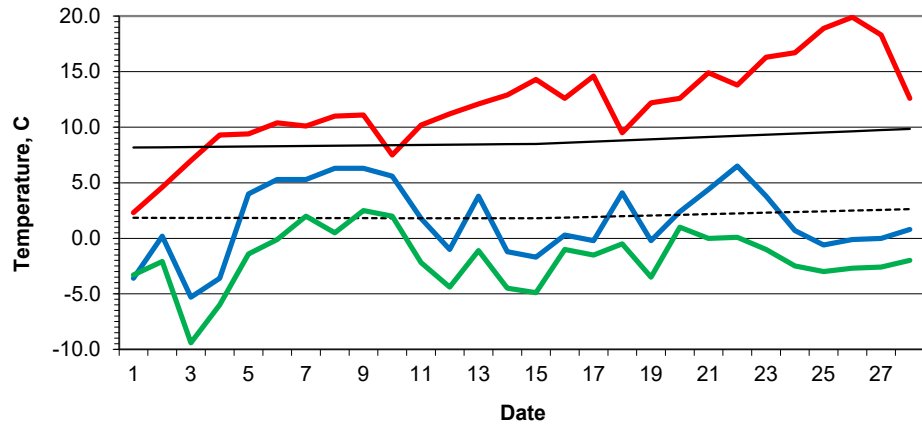
Daily soil temperatures, 0700GMT



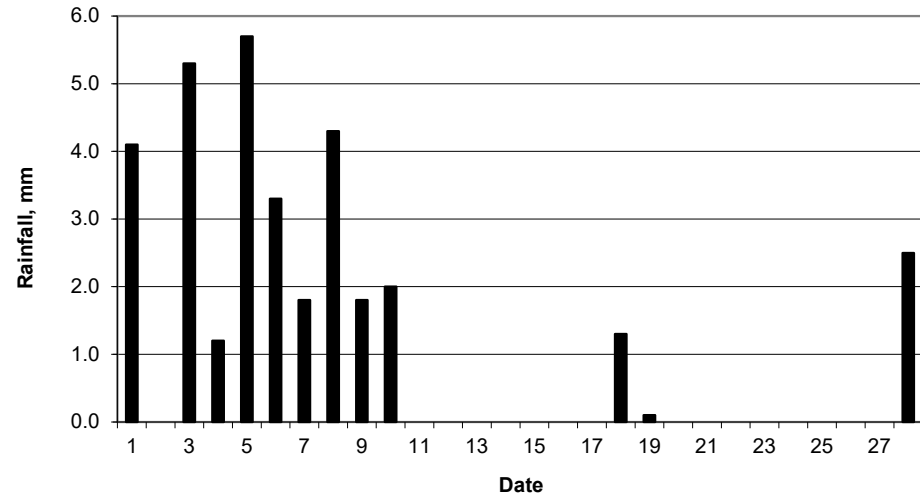
Mean sea level pressure, 0900GMT



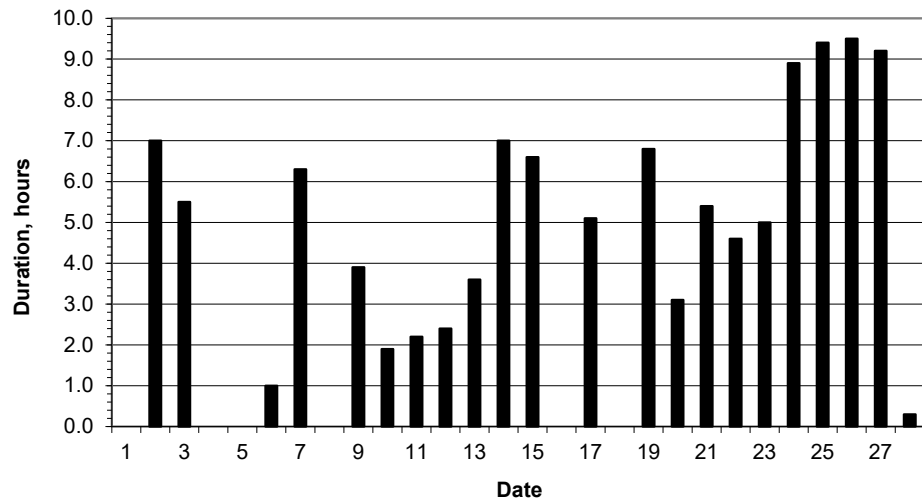
Daily temperature extremes



Daily rainfall



Daily sunshine



Daily evaporation

