

MAIDENHEAD METEOROLOGICAL OBSERVATIONS FOR FEBRUARY 2018

DD	N	dd	ff	ww	VV	0900GMT Temp	RH	Temperature Max	Min	Gmin	Soil temperatures (depth in cm)						E	SS	Rain	Sun	S	L	H	T	G	F	Press	Rain hrs	Fr. hrs	Pch Evap				
											5	10	20	30	50	100																		
01	5	31	02	02	97	3.6	77	7.8	1.7	-1.8	3.1	3.1	4.8	6.0	6.2	7.4	10	0	0.1	6.0	0	0	0	0	0	0	1004.5	0.2	0.0	1.7	Number of			
02	2	31	02	02	97	3.8	78	8.4	2.5	-0.1	3.2	3.1	4.5	5.6	5.9	7.2	10	0	0.9	4.1	0	0	0	0	0	0	1012.0	3.0	0.0	1.1	days with			
03	8	27	02	61	96	3.1	85	4.1	2.7	-1.5	3.9	3.8	4.7	5.5	5.5	7.1	10	0	5.3	0.0	0	0	0	0	0	0	1007.5	10.2	0.0	0.3	2018 normal			
04	1	04	05	05	97	2.7	68	5.5	1.7	-0.7	3.2	3.0	4.4	5.4	5.6	7.0	10	0	0.1	3.5	0	0	0	0	0	0	1025.0	0.1	0.0	1.0	Snow/sleet falling			
05	0	04	02	02	97	1.2	73	5.4	0.0	-2.7	1.7	1.8	3.6	5.0	5.4	7.0	10	0	0.0	3.7	0	0	0	0	0	0	1028.0	0.0	0.0	1.0	5 3.7			
06	7	36	05	02	97	1.5	70	3.5	0.4	-2.1	2.2	2.2	3.5	4.6	5.0	6.8	10	0	0.1	3.2	5	0	0	0	0	0	1018.5	0.2	0.0	1.2	50% snow cover 09GMT			
07	1	36	05	02	97	-0.1	70	5.7	-0.5	-2.8	1.4	1.5	3.1	4.4	4.7	6.7	40	0	0.0	7.5	0	0	0	0	0	0	1021.0	0.0	4.2	1.5	0 1.8			
08	7	22	02	03	97	-1.5	84	7.5	-4.4	-7.2	0.9	0.9	2.4	3.8	4.4	6.5	40	0	5.6	0.2	0	0	0	0	0	0	1020.5	5.2	9.6	1.0	Hail or ice pellets			
09	8	27	05	21	97	3.8	85	6.1	-1.5	0.5	4.4	4.1	1.4	4.3	4.4	6.3	20	0	tr	5.0	0	0	0	0	0	0	1008.0	0.0	0.0	0.9	1 0.6			
10	8	00	00	02	97	0.1	85	10.0	-2.8	-6.1	1.3	1.1	2.8	4.0	4.5	6.2	40	0	4.0	0.0	0	0	0	0	0	0	1016.0	6.7	9.1	1.0	Thunder			
11	0	27	05	02	97	4.4	72	7.7	0.1	-0.2	3.2	3.4	4.4	4.7	4.6	6.2	20	0	0.4	6.8	5	0	5	0	0	0	1004.0	0.2	0.0	1.1	0 0.3			
12	0	27	02	02	97	0.4	80	8.1	-2.0	-6.3	1.2	1.4	2.9	4.3	4.6	6.2	40	0	0.1	5.1	0	0	0	0	0	0	1016.5	0.1	5.0	1.4	Gale			
13	8	18	09	03	97	5.7	73	5.7	0.4	-4.1	2.4	2.1	2.9	4.0	4.4	6.2	10	0	2.6	0.0	0	0	0	0	0	0	1000.0	6.0	0.0	0.4	0 0.2			
14	6	13	02	02	97	1.3	85	7.5	-3.1	-6.1	1.2	1.3	2.9	4.1	4.3	6.1	40	0	7.7	0.0	0	0	0	0	0	0	1007.0	5.5	7.3	0.7	Fog at 09GMT			
15	5	22	02	01	97	6.9	90	11.0	1.3	-3.0	3.9	3.9	4.3	4.4	4.3	6.0	10	0	0.1	6.3	0	0	0	0	0	0	1009.5	0.1	0.0	1.2	0 1.7			
16	1	00	00	02	97	0.7	86	10.3	-2.8	-6.0	1.3	1.5	3.2	4.5	4.6	6.0	40	0	0.0	7.2	0	0	0	0	0	0	1026.5	0.0	6.3	2.0	Air frost			
17	2	13	02	02	97	2.2	85	11.0	-0.6	-5.1	1.7	1.7	3.9	4.3	4.5	6.0	10	0	0.1	6.7	0	0	0	0	0	0	1022.5	0.4	1.3	1.6	14 9.3			
18	8	13	02	50	96	5.5	92	10.7	2.2	-3.0	3.8	3.3	5.3	4.5	4.5	6.0	10	0	1.2	1.3	0	0	0	0	0	0	1023.0	4.7	0.0	0.5	Ground frost			
19	8	22	02	20	96	7.3	90	11.1	5.5	4.6	5.6	5.3	6.6	5.2	4.9	6.0	10	0	1.4	0.0	0	0	0	0	0	0	1018.0	2.8	0.0	0.8	25 17.2			
20	8	31	05	20	97	7.7	85	10.2	7.3	6.6	7.1	6.7	5.8	6.0	5.3	6.0	10	0	0.2	5.3	0	0	0	0	0	0	1021.0	0.7	0.0	2.0	0.2mm precipitation			
21	4	04	02	02	96	4.5	81	7.0	3.1	-1.0	4.4	4.6	5.0	6.2	5.8	6.2	10	0	0.0	1.3	0	0	0	0	0	0	1029.0	0.0	0.0	1.1	11 12.1			
22	7	09	02	02	97	2.3	70	6.5	0.8	-2.4	3.3	3.6	3.3	5.8	5.7	6.4	10	0	0.0	3.9	0	0	0	0	0	0	1025.5	0.0	0.6	1.2	1.0mm precipitation			
23	7	09	02	03	97	1.1	69	5.8	-1.9	-6.7	1.4	1.7	3.0	4.9	5.3	6.4	10	0	0.0	3.7	0	0	0	0	0	0	1023.0	0.0	7.7	1.0	7 9.4			
24	0	09	05	02	97	0.8	68	7.2	-1.8	-6.8	1.1	1.2	2.6	4.4	5.0	6.3	40	0	0.0	9.2	0	0	0	0	0	0	1022.5	0.0	6.4	1.3	5.0mm precipitation			
25	0	09	05	02	97	1.0	61	6.1	-1.2	-4.7	1.1	1.1	2.3	4.0	4.4	6.2	40	0	tr	9.4	0	0	0	0	0	0	1028.0	0.0	6.7	1.2	3 3.2			
26	7	09	05	03	97	-0.3	55	3.2	-1.1	-3.6	0.8	0.7	1.9	3.6	4.1	6.0	40	0	tr	4.9	5	0	0	0	0	0	1032.5	0.0	15.2	0.6	No sunshine			
27	2	04	02	02	97	-2.0	72	2.3	-3.8	-7.5	0.2	0.3	1.9	3.1	3.7	5.9	X5	<1	0.1	5.2	5	0	0	0	0	0	1026.5	0.2	18.0	0.0	5 8.1			
28	1	09	05	01	97	-2.3	62	0.0	-5.2	-10.3	0.1	0.1	1.5	2.7	3.4	5.6	X5	<1	0.3	6.4	5	0	0	0	0	0	1019.5	0.3	23.7	0.0	Becoming unusually cold at the end with patchy lying snow and the coldest day and night of the winter. -10.3C was the lowest grass minimum for six years in any month. The coldest February since 1996 but the sunniest since 2008 and the second sunniest February in 30 years. The driest February for six years.			
Monthly means						2.3	77	7.0	-0.1	-3.2	2.5	2.4	3.5	4.6	4.8	6.4											1018.4							
Monthly totals																				30.3	115.9							46.6	121.1	28.8				
Highest values						7.7		11.1	7.3	6.6	7.1	6.7	6.6	6.2	6.2	7.4			7.7	9.4								10.2	23.7	2.0				
Lowest values						-2.3	55	0.0	-5.2	-10.3	0.1	0.1	1.4	2.7	3.4	5.6																		
1981-2010 monthly climatological averages						88	8.5	1.8	-1.2	3.7	3.8	4.7	5.2	5.3	6.3					43.7	77.8								1017.8	48.7	82.9	29.7		

DD: date

07GMT observations

N	cloud cover (oktas, 9=obscured)	dd	wind direction (degrees/10)
ff	wind speed (knots)		
ww	present weather code		
1	cloud decreasing	50	slight drizzle
2	sky not changing	60	intermittent slight rain
3	cloud increasing	61	continuous slight rain
21	recent rain	71	continuous slight snow
25	recent rain shower	95	light thunderstorm
VV	visibility (00-50 metres/100, 94 very poor, 95 poor, 96 moderate, 97 good)		

Soil temperatures are for 0700GMT beneath bare soil (5, 10, 20cm) or grass (30, 50, 100cm)

09GMT observations

Temp	temperature (degC)	RH	relative humidity (%)
E	state of ground (X0 hail, X1 to X9 snow lying, 10 moist, 20 wet, 40 frozen)		
SS	snow depth (cm)		
Press	air pressure (mb)		

24 hour readings

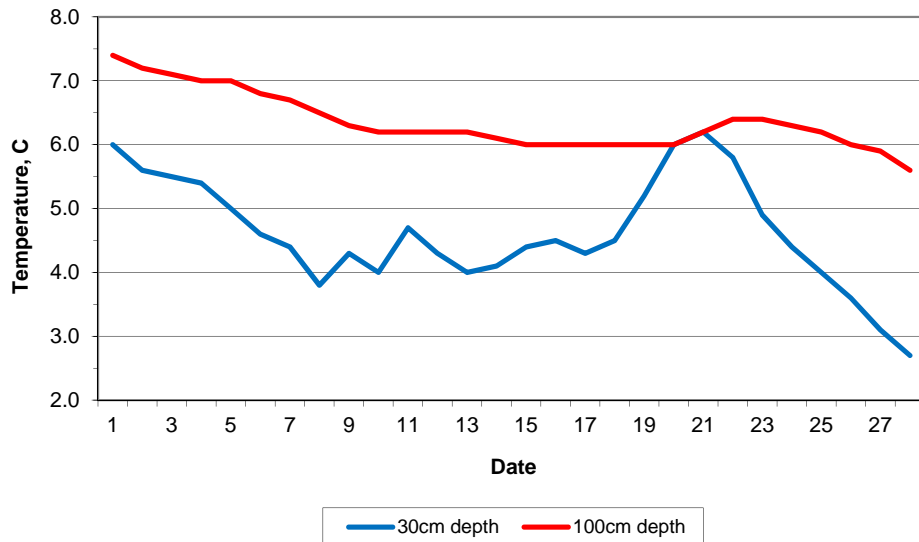
Max	maximum temperature (degC) beginning 09GMT	Min	minimum temperature (degC) ending 09GMT
Gmin	grass minimum temperature (degC) ending 09GMT	Rain	precipitation beginning 09GMT
Sun	sunshine (hours) sunrise-sunset	Rain hrs	hours of rainfall (>0.1mm/h) 09-09GMT
Fr. Hrs	hours of air frost (00-24GMT)	Pch Evap	Piche evaporation (ml) beginning 09GMT

Days with

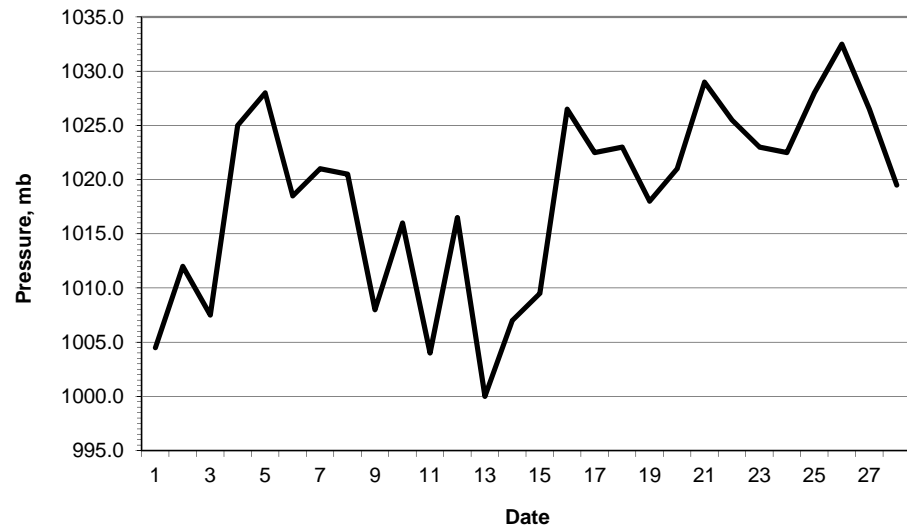
S	snow(5) or sleet(1) falling	L	50% snow cover at 09GMT	H	hail or ice pellets
T	thunder heard	G	gale	F	fog at 09GMT

This information (and data for earlier months) is also available at <http://www.met.reading.ac.uk/~brugge>

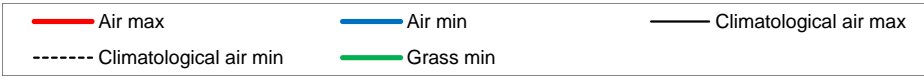
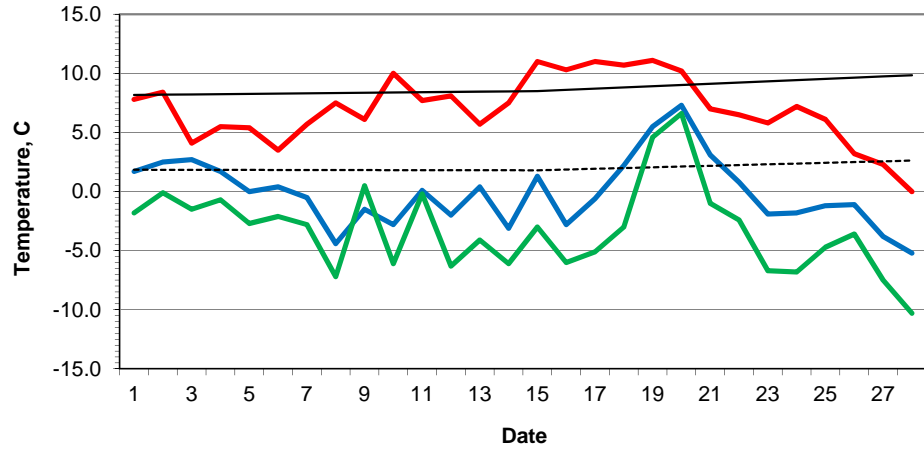
Daily soil temperatures, 0700GMT



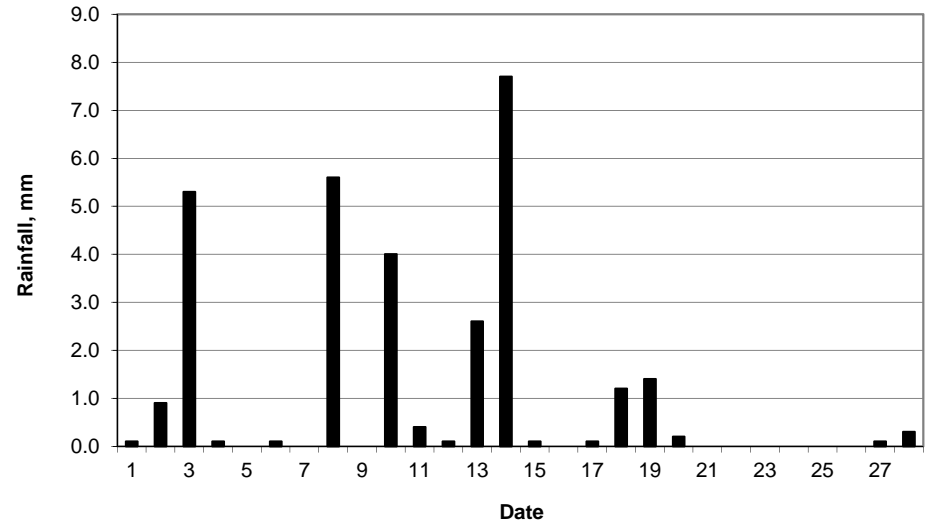
Mean sea level pressure, 0900GMT



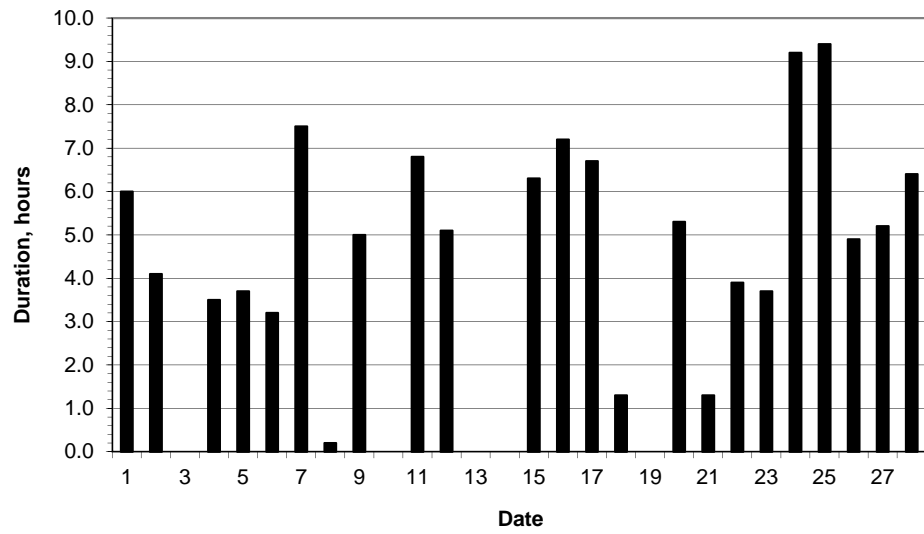
Daily temperature extremes



Daily rainfall



Daily sunshine



Daily evaporation

