

MAIDENHEAD METEOROLOGICAL OBSERVATIONS FOR FEBRUARY 2013

DD	N	dd	ff	ww	VV	0900GMT Temp	RH	Temperature Max	Min	Gmin	Soil temperatures (depth in cm)						E	SS	Rain	Sun	S	L	H	T	G	F	Press	Rain hrs	Fr. hrs	Pch Evap	
01	8	22	05	61	96	4.7	97	8.0	4.7	4.0	5.4	5.6	6.0	6.3	6.2	6.4	20	0	0.0	3.0	0	0	0	0	0	0	1002.5	0.0	0.0	0.9	Number of days with 2013 normal Snow/sleet falling 7 3.7 50% snow cover 09GMT 1 1.8 Hail or ice pellets 0 0.6 Thunder 0 0.3 Gale 0 0.2 Fog at 09GMT 1 1.7 Air frost 6 9.3 Ground frost 19 17.2 0.2mm precipitation 9 12.1 1.0mm precipitation 6 9.4 5.0mm precipitation 3 3.2 No sunshine 10 8.1 Temperatures were below average overall (the coldest since 1996), although there was less air frost than normal. The precipitation total was almost exactly average for the month, with half the total falling on one day. Snowfall was more frequent than normal, although amounts were small.
02	0	34	05	02	97	3.0	80	6.5	2.3	-0.7	3.2	3.6	5.0	6.0	5.9	6.4	10	0	0.0	7.7	0	0	0	0	0	1015.0	0.0	3.2	1.3		
03	8	22	02	02	97	2.7	87	10.1	-1.8	-4.0	2.7	2.6	3.8	5.2	5.6	6.5	10	0	0.1	0.0	0	0	0	0	0	1020.0	0.1	5.4	0.3		
04	7	27	09	02	97	9.8	71	11.0	2.7	1.8	6.6	5.8	5.7	5.5	6.5	10	0	1.9	3.5	0	0	0	0	0	1014.0	0.9	0.0	1.6			
05	6	27	05	02	97	2.8	78	7.0	1.9	-0.9	3.1	3.4	4.9	5.8	5.7	6.5	10	0	2.6	7.3	0	0	0	0	0	1003.0	1.8	0.0	1.5		
06	3	36	13	02	97	3.5	83	6.1	2.8	-0.1	3.9	4.1	5.0	5.6	5.6	6.4	10	0	0.1	0.8	0	0	0	0	0	1008.0	0.1	0.0	1.6		
07	1	31	05	02	97	1.7	91	7.5	-0.3	-3.0	1.3	1.8	3.5	5.1	5.4	6.5	40	0	0.2	3.9	0	0	0	0	0	1020.0	2.0	1.2	0.7		
08	6	31	02	03	97	1.2	94	7.3	-1.3	-2.8	1.7	2.2	3.7	5.0	5.3	6.4	40	0	0.1	4.5	0	0	0	0	0	1020.0	0.3	3.6	0.7		
09	8	27	02	60	96	2.6	96	5.1	1.2	-1.5	3.4	3.3	4.0	4.9	5.2	6.4	10	0	6.6	0.0	1	0	0	0	0	1020.5	22.0	0.0	0.5		
10	8	13	02	61	96	5.1	98	5.2	2.6	2.9	3.8	3.9	4.2	4.8	5.1	6.2	20	0	22.8	0.0	5	0	0	0	0	1000.5	20.3	0.0	0.0		
11	8	09	02	70	94	1.3	98	1.8	0.6	0.1	1.2	1.7	3.0	4.6	4.9	6.1	X3	2	2.1	0.0	5	1	0	0	0	998.0	6.7	0.0	0.5		
12	8	04	05	02	96	1.0	87	2.1	0.8	0.1	1.9	2.0	3.0	4.1	4.6	6.0	X1	1	tr	0.0	0	0	0	0	0	1015.0	0.0	0.0	0.5		
13	8	09	05	02	96	1.7	83	8.6	0.7	-0.6	1.7	1.8	2.9	4.0	4.4	5.9	10	0	6.6	0.0	5	0	0	0	0	1023.0	7.3	0.0	1.3		
14	7	18	02	01	97	8.6	97	12.3	0.8	0.4	5.0	4.3	3.9	4.0	4.2	5.8	20	0	0.0	6.6	0	0	0	0	0	1010.0	0.0	0.0	0.6		
15	7	27	02	02	97	3.0	96	12.2	1.3	-1.1	2.8	3.1	4.1	4.8	4.6	5.7	10	0	0.0	5.4	0	0	0	0	0	1020.0	0.0	0.0	1.0		
16	7	09	02	02	97	4.8	93	10.9	3.0	0.1	4.4	4.1	4.6	5.0	4.8	5.8	10	0	0.0	1.6	0	0	0	0	0	1024.0	0.0	0.0	0.8		
17	8	13	02	44	05	3.4	98	11.1	-1.0	-2.0	3.8	3.3	4.0	5.0	5.2	5.9	10	0	0.0	5.7	0	0	0	0	1	1022.5	0.0	3.1	1.4		
18	1	00	00	02	96	3.1	98	10.2	1.1	-1.6	2.7	2.9	3.1	5.0	5.2	5.9	10	0	0.0	7.6	0	0	0	0	0	1020.5	0.0	0.0	0.8		
19	0	09	02	02	97	0.2	97	12.3	-2.9	-3.5	1.2	1.7	3.6	4.8	5.3	5.9	40	0	0.1	9.1	0	0	0	0	0	1020.5	0.2	8.8	1.8		
20	8	04	02	20	94	4.1	97	6.2	0.2	-2.9	2.9	2.8	3.0	4.6	5.0	5.9	10	0	0.1	4.6	0	0	0	0	0	1023.0	0.5	0.0	1.5		
21	8	09	13	02	97	1.8	69	2.4	0.8	-1.0	1.6	1.7	2.5	4.4	4.7	5.9	10	0	0.0	0.0	0	0	0	0	0	1025.0	0.0	0.0	0.7		
22	8	09	09	02	97	0.6	64	2.9	0.2	-0.7	0.9	1.1	2.4	3.9	4.3	5.8	10	0	tr	0.2	5	0	0	0	0	1022.0	0.0	0.0	1.3		
23	8	04	09	02	97	1.1	74	2.5	0.3	-0.2	1.2	1.2	2.4	3.6	4.1	5.7	10	0	tr	0.2	5	0	0	0	0	1020.0	0.0	2.1	1.1		
24	8	36	05	21	97	0.9	77	2.6	-0.8	-3.5	1.2	1.2	2.5	3.3	3.8	5.5	10	0	tr	0.0	5	0	0	0	0	1025.0	0.0	0.0	1.1		
25	8	05	05	50	96	2.6	61	4.2	0.9	-0.5	2.1	1.7	3.1	3.4	3.7	5.4	10	0	0.3	0.0	0	0	0	0	0	1029.0	1.0	0.0	0.7		
26	8	04	05	21	96	3.8	95	4.9	2.6	2.0	2.9	2.7	3.5	3.6	3.8	5.3	10	0	0.1	0.0	0	0	0	0	0	1031.5	0.2	0.0	0.4		
27	8	04	05	20	96	2.3	90	6.0	2.2	1.8	3.1	2.9	3.5	3.9	4.0	5.2	10	0	0.2	3.9	0	0	0	0	0	1035.0	0.5	0.0	0.9		
28	8	36	05	02	96	3.6	86	9.1	1.1	-1.9	2.3	2.2	3.1	4.0	4.0	5.2	10	0	tr	0.3	0	0	0	0	0	1030.5	0.0	0.0	1.3		
Monthly means						3.0	87	7.0	1.0	-0.7	2.8	2.8	3.7	4.7	4.9	6.0											1018.5				
Monthly totals																				43.9	75.9							63.9	27.4	26.8	
Highest values						9.8		12.3	4.7	4.0	6.6	5.8	6.0	6.3	6.2	6.5			22.8	9.1							22.0	8.8	1.8		
Lowest values						0.2	61	1.8	-2.9	-4.0	0.9	1.1	2.4	3.3	3.7	5.2															
1981-2010 monthly climatological averages						88	8.5	1.8	-1.2	3.7	3.8	4.7	5.2	5.3	6.3					43.7	77.8							1017.8	48.7	82.9	29.7

DD: date

07GMT observations

N	cloud cover (oktas, 9=obscured)	dd	wind direction (degrees/10)
ff	wind speed (knots)		
ww	present weather code		
1	cloud decreasing	50	slight drizzle
2	sky not changing	60	intermittent slight rain
3	cloud increasing	61	continuous slight rain
21	recent rain	71	continuous slight snow
25	recent rain shower	95	light thunderstorm
VV	visibility (00-50 metres/100, 94 very poor, 95 poor, 96 moderate, 97 good)		

Soil temperatures are for 0700GMT beneath bare soil (5, 10, 20cm) or grass (30, 50, 100cm)

09GMT observations

Temp	temperature (degC)	RH	relative humidity (%)
E	state of ground (X0 hail, X1 to X9 snow lying, 10 moist, 20 wet, 40 frozen)		
SS	snow depth (cm)		
Press	air pressure (mb)		

24 hour readings

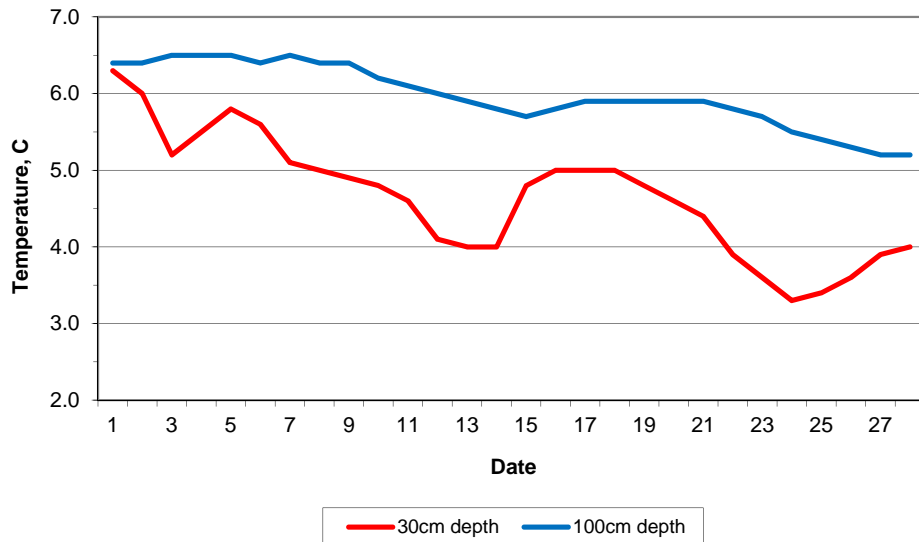
Max	maximum temperature (degC) beginning 09GMT	Min	minimum temperature (degC) ending 09GMT
Gmin	grass minimum temperature (degC) ending 09GMT	Rain	precipitation beginning 09GMT
Sun	sunshine (hours) sunrise-sunset	Rain hrs	hours of rainfall (>0.1mm/h) 09-09GMT
Fr. Hrs	hours of air frost (00-24GMT)	Pch Evap	Piche evaporation (ml) beginning 09GMT

Days with

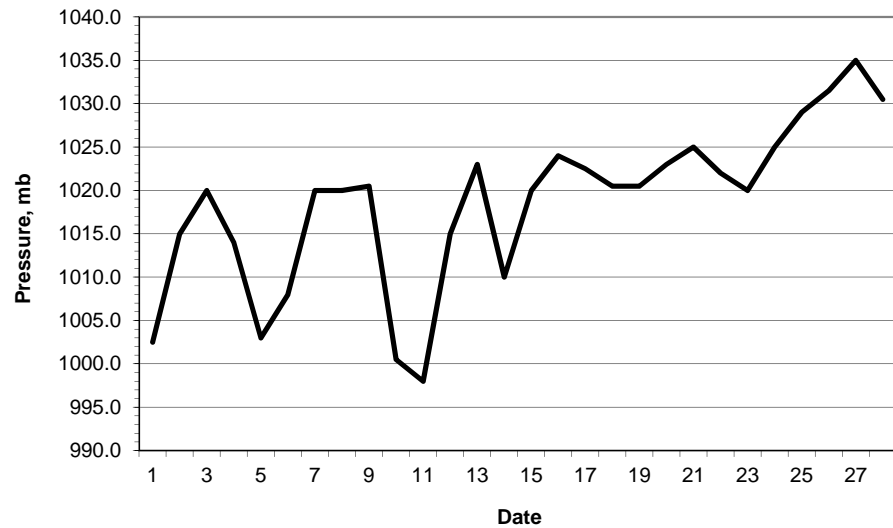
S	snow(5) or sleet(1) falling	L	50% snow cover at 09GMT	H	hail or ice pellets
T	thunder heard	G	gale	F	fog at 09GMT

This information (and data for earlier months) is also available at <http://www.met.reading.ac.uk/~brugge>

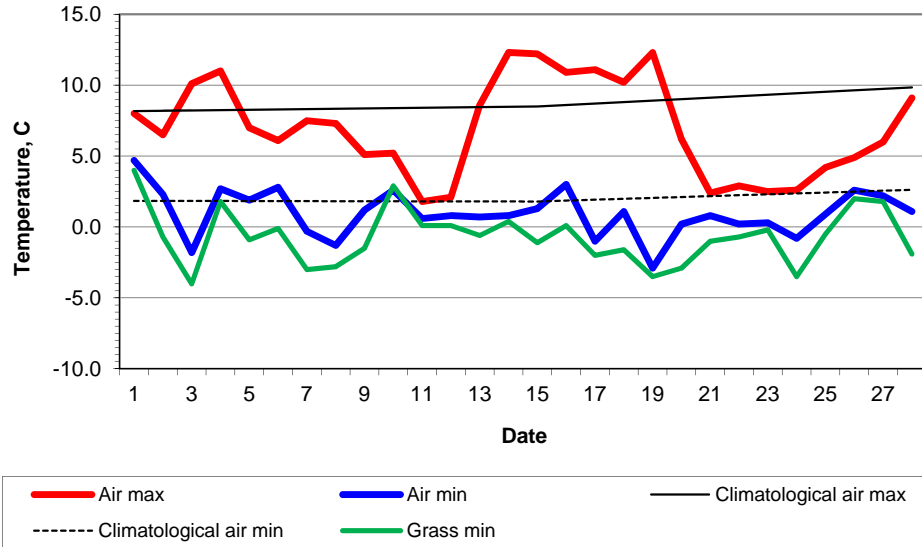
**Daily soil temperatures, 0700GMT**



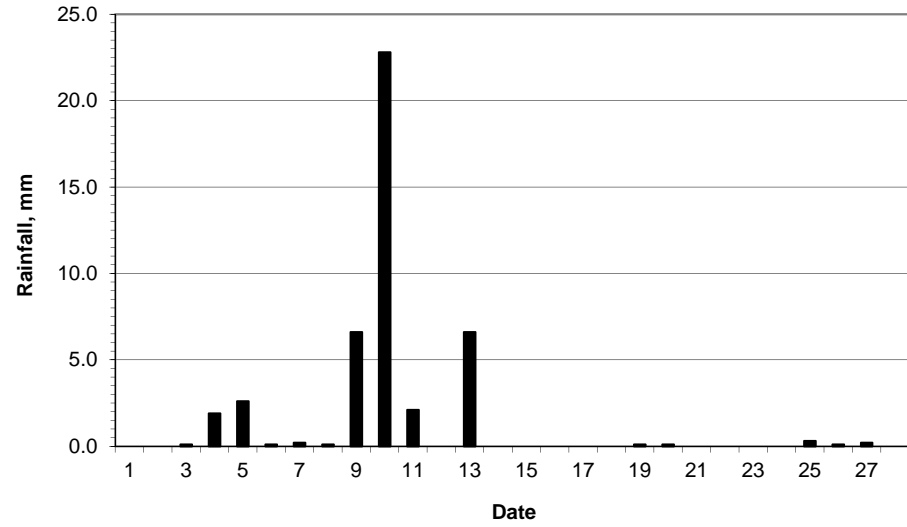
**Mean sea level pressure, 0900GMT**



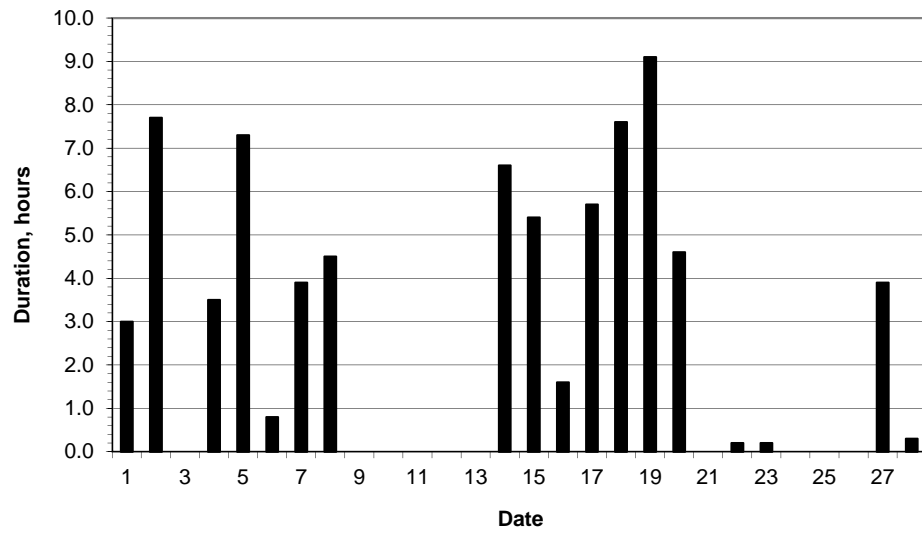
### Daily temperature extremes



### Daily rainfall



### Daily sunshine



### Daily evaporation

