

MAIDENHEAD METEOROLOGICAL OBSERVATIONS FOR FEBRUARY 2011

						0900GMT		Temperature				Soil temperatures (depth in cm)								Rain	Fr.	Pch																					
DD	N	dd	ff	ww	VV	Temp	RH	Max	Min	Gmin	5	10	20	30	50	100	E	SS	Rain	Sun	S	L	H	T	G	F	Press	hrs	hrs	Evap													
01	7	22	02	05	96	2.8	92	7.3	-3.0	-5.1	1.1	1.1	2.1	3.1	4.1	5.8	40	0	0.1	0.0	0	0	0	0	0	0	1026.0	0.1	5.0	0.2	Number of												
02	8	22	02	41	08	4.8	96	10.0	1.4	-2.0	2.6	2.4	3.1	3.6	4.1	5.6	10	0	tr	0.0	0	0	0	0	0	0	1027.5	0.0	0.0	0.4	days with												
03	4	23	02	03	96	2.8	98	10.4	2.1	-1.7	3.2	3.2	3.1	4.4	4.3	5.5	10	0	tr	5.7	0	0	0	0	0	0	1027.5	0.0	0.0	1.4	2011 normal												
04	8	23	13	60	97	10.4	90	11.7	2.8	-1.4	6.6	5.7	5.4	4.9	5.1	5.6	10	0	0.1	0.0	0	0	0	0	0	0	1017.5	0.2	0.0	1.3	Snow/sleet falling												
05	7	22	09	21	97	11.7	85	12.6	10.0	8.6	7.9	7.2	6.6	6.0	5.4	5.7	10	0	tr	0.1	0	0	0	0	0	0	1018.5	0.0	0.0	1.4	0 3.0												
06	7	23	13	02	97	11.4	84	11.7	10.4	8.5	8.2	7.7	7.2	6.8	5.9	5.9	10	0	0.0	0.0	0	0	0	0	0	0	1021.0	0.0	0.0	1.5	50% snow cover 09GMT												
07	8	21	19	02	97	9.8	84	12.1	9.1	7.3	7.2	7.2	7.5	7.1	6.4	6.1	10	0	tr	1.5	0	0	0	0	0	0	1013.0	0.0	0.0	0.4	0 1.7												
08	9	00	00	45	03	2.4	96	10.4	-0.7	-2.9	4.1	4.4	5.8	6.5	6.5	6.4	10	0	0.0	7.5	0	0	0	0	0	0	1024.5	0.0	2.0	0.7	Hail or ice pellets												
09	8	18	05	02	96	9.0	89	10.0	2.4	-0.9	6.2	5.7	6.0	6.0	6.4	6.5	10	0	2.3	0.2	0	0	0	0	0	0	1020.0	3.0	0.0	0.8	0 0.4												
10	8	18	05	58	96	9.7	96	10.2	9.0	6.0	7.1	6.9	6.3	6.6	6.4	6.5	10	0	11.2	0.0	0	0	0	0	0	0	1015.5	9.7	0.0	0.2	Thunder												
11	8	22	02	20	96	9.5	95	12.1	7.7	5.1	7.9	7.3	6.9	7.1	6.5	6.6	10	0	2.4	0.0	0	0	0	0	0	0	1012.5	4.7	0.0	0.1	0 0.2												
12	7	27	05	01	97	8.2	96	11.9	8.0	5.0	7.8	7.7	7.6	7.4	6.8	6.7	10	0	0.1	4.8	0	0	0	0	0	0	1013.0	0.1	0.0	0.5	Gale												
13	8	18	09	02	97	7.8	90	8.5	2.8	-0.2	6.1	6.2	7.0	7.1	7.2	6.9	10	0	5.2	0.0	0	0	0	0	0	0	1005.0	11.6	0.0	0.4	0 0.3												
14	2	18	02	01	96	5.4	98	10.4	1.3	-0.7	4.9	5.1	6.2	6.9	6.8	6.9	10	0	0.1	4.7	0	0	0	0	0	0	1003.5	0.1	0.0	0.8	Fog at 09GMT												
15	8	12	09	02	97	5.7	91	6.7	4.0	-0.5	5.0	4.8	5.9	6.5	6.7	7.0	10	0	1.3	0.0	0	0	0	0	0	0	994.0	4.0	0.0	0.3	0 2.4												
16	8	17	05	02	96	5.5	94	11.0	0.0	-1.5	3.9	4.1	5.2	6.2	6.5	7.0	10	0	0.0	4.4	0	0	0	0	0	0	996.0	0.0	0.0	0.8	Air frost												
17	8	09	05	02	96	5.6	92	9.8	2.7	1.6	5.8	5.2	5.9	6.3	6.5	6.9	10	0	0.0	2.8	0	0	0	0	0	0	1005.0	0.0	0.0	0.6	2 9.3												
18	8	10	05	03	96	5.1	90	8.8	4.2	0.1	5.4	5.3	5.6	6.3	6.4	6.9	10	0	7.8	0.6	0	0	0	0	0	0	1014.0	7.2	0.0	0.6	Ground frost												
19	8	09	05	61	95	6.0	95	6.1	3.2	2.5	4.9	4.7	5.9	6.1	6.3	6.9	10	0	0.8	0.0	0	0	0	0	0	0	1010.0	3.3	0.0	0.4	10 17.5												
20	8	02	09	05	96	5.2	88	5.7	4.8	1.5	5.4	5.2	5.7	6.1	6.2	6.8	10	0	tr	0.0	0	0	0	0	0	0	1016.5	0.0	0.0	0.4	0.2mm precipitation												
21	8	13	02	05	94	5.1	87	6.8	4.5	3.8	4.9	4.9	5.5	6.0	6.2	6.8	10	0	0.8	0.0	0	0	0	0	0	0	1014.5	1.3	0.0	0.4	14 11.4												
22	8	15	02	02	94	5.5	97	7.6	4.8	4.5	5.3	5.3	5.7	6.1	6.2	6.8	10	0	2.9	0.0	0	0	0	0	0	0	1017.0	5.8	0.0	0.2	1.0mm precipitation												
23	8	20	02	20	94	7.6	97	10.7	5.5	3.6	6.2	5.6	6.9	6.2	6.2	6.7	20	0	1.2	0.0	0	0	0	0	0	0	1018.0	3.0	0.0	0.2	11 9.1												
24	7	18	02	01	97	10.4	92	14.8	7.2	4.4	6.7	6.8	7.2	6.8	6.2	6.8	10	0	0.1	7.4	0	0	0	0	0	0	1023.0	0.1	0.0	0.7	5.0mm precipitation												
25	8	22	02	02	97	10.3	96	13.9	5.8	2.5	7.8	7.3	6.8	7.1	6.7	6.9	10	0	1.3	0.9	0	0	0	0	0	0	1026.0	2.8	0.0	0.8	3 3.0												
26	7	20	09	02	97	9.8	93	10.5	7.8	5.6	8.3	8.3	6.5	7.2	7.0	7.1	10	0	3.4	0.7	0	0	0	0	0	0	1014.0	2.5	0.0	0.7	No sunshine												
27	6	32	09	02	97	6.1	83	10.9	2.6	0.0	4.9	5.0	6.5	7.4	7.3	7.2	10	0	2.5	1.8	0	0	0	0	0	0	1022.5	2.0	0.0	0.7	14 9.2												
28	8	05	09	02	97	5.3	77	5.1	3.3	0.6	5.1	5.0	6.2	7.0	7.2	7.2	10	0	0.2	0.0	0	0	0	0	0	0	1029.5	0.2	0.0	0.8	Half the days were sunless and as a result the sunshine total was below average. Overall, temperatures were above average especially by night and only two nights had an air frost.												
Monthly means						7.1	91	9.9	4.4	1.9	5.7	5.5	5.9	6.2	6.2	6.6											1015.9																
Monthly totals																43.8	43.1											61.7	7.0	17.7													
Highest values						11.7		14.8	10.4	8.6	8.3	8.3	7.6	7.4	7.3	7.2			11.2	7.5											11.6	5.0	1.5										
Lowest values						2.4	77	5.1	-3.0	-5.1	1.1	1.1	2.1	3.1	4.1	5.5																											
1971-2000 monthly climatological averages						88	83	1.6	-1.3	3.4	3.6	4.5	5.0	5.1	6.1											42.8	67.5											1016.8	45.7	95.2	31.1		

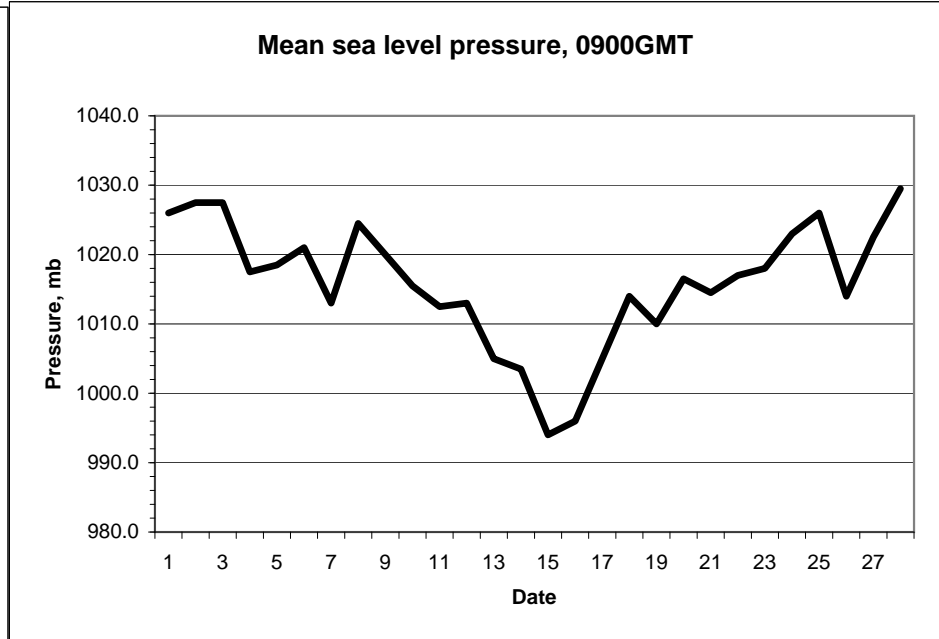
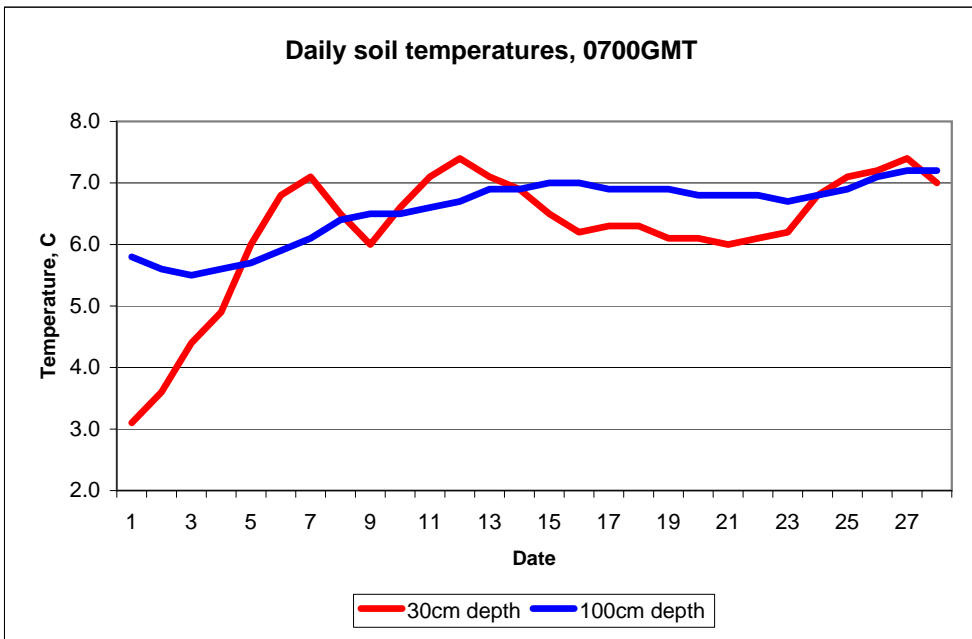
DD: date
 07GMT observations
 N cloud cover (oktas, 9=obscured) dd wind direction (degrees/10)
 ff wind speed (knots)
 ww present weather code
 1 cloud decreasing 50 slight drizzle
 2 sky not changing 60 intermittent slight rain
 3 cloud increasing 61 continuous slight rain
 21 recent rain 71 continuous slight snow
 25 recent rain shower 95 light thunderstorm
 VV visibility (00-50 metres/100, 94 very poor, 95 poor, 96 moderate, 97 good)
 Soil temperatures are for 0700GMT beneath bare soil (5, 10, 20cm) or grass (30, 50, 100cm)

09GMT observations
 Temp temperature (degC) RH relative humidity (%)
 E state of ground (X0 hail, X1 to X9 snow lying, 10 moist, 20 wet, 40 frozen)
 SS snow depth (cm)
 Press air pressure (mb)

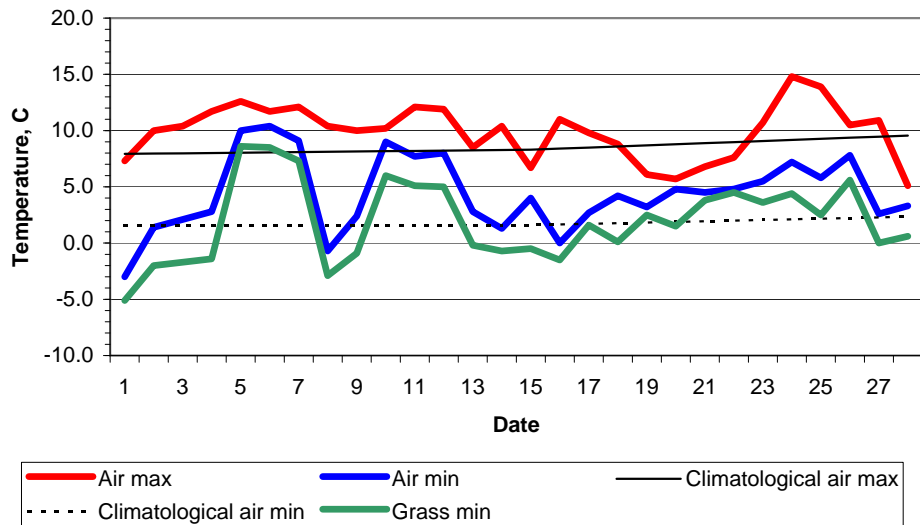
24 hour readings
 Max maximum temperature (degC) beginning 09GMT Min minimum temperature (degC) ending 09GMT
 Gmin grass minimum temperature (degC) ending 09GMT Rain precipitation beginning 09GMT
 Sun sunshine (hours) sunrise-sunset Rain hrs hours of rainfall (>0.1mm/h) 09-09GMT
 Fr. Hrs hours of air frost (00-24GMT) Pch Evap Piche evaporation (ml) beginning 09GMT

Days with
 S snow(5) or sleet(1) falling L 50% snow cover at 09GMT H hail or ice pellets
 T thunder heard G gale F fog at 09GMT

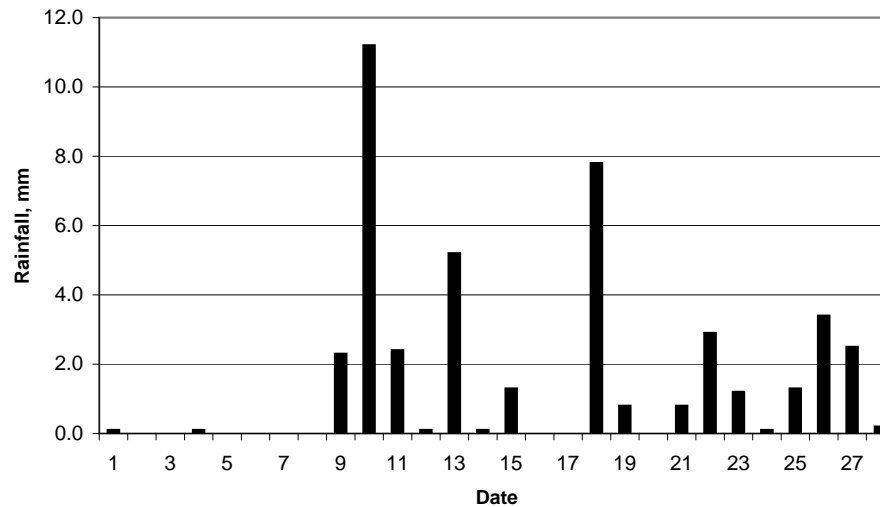
This information (and data for earlier months) is also available at <http://www.met.rdg.ac.uk/~brugge>



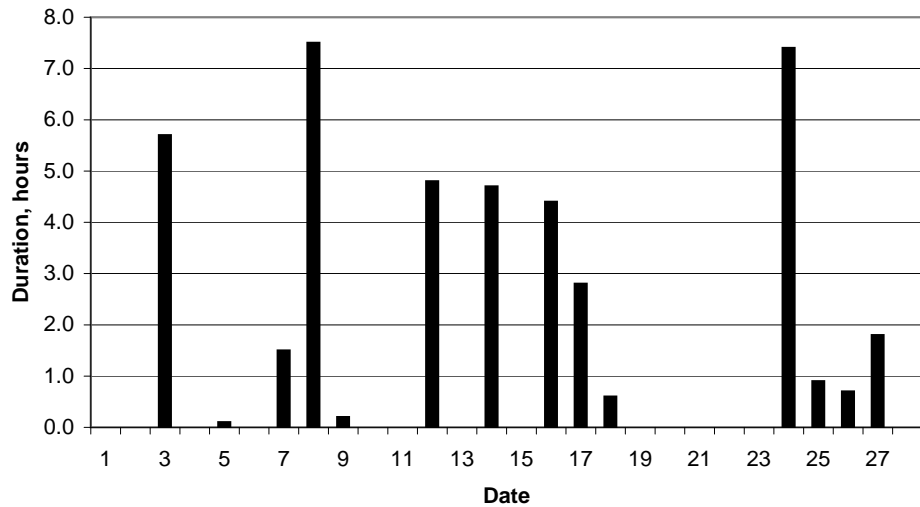
Daily temperature extremes



Daily rainfall



Daily sunshine



Daily evaporation

