

MAIDENHEAD METEOROLOGICAL OBSERVATIONS FOR FEBRUARY 2009

DD	N	dd	ff	ww	VV	0900GMT		Temperature			Soil temperatures (depth in cm)						E	SS	Rain	Sun	S	L	H	T	G	F	Press	Rain	Fr.	Pch			
						Temp	RH	Max	Min	Gmin	5	10	20	30	50	100												hrs	hrs	Evap			
01	8	09	13	02	97	2.1	71	3.2	-0.4	-3.5	1.8	1.8	3.0	4.4	4.7	5.9	10	0	2.8	2.7	5	0	0	0	0	0	1002.0	12.0	8.5	1.2	Number of		
02	8	04	05	71	94	-1.5	99	0.5	-2.1	-4.0	1.1	1.1	2.4	3.8	4.3	5.9	X3	10	3.0	0.0	5	1	0	0	0	0	1000.0	6.0	16.0	0.0	days with		
03	4	05	02	02	97	-1.6	97	4.1	-3.9	-8.5	1.3	1.1	2.7	3.4	4.0	5.7	X3	6	0.8	3.5	5	1	0	0	0	0	997.0	1.0	10.3	0.6	2009 normal		
04	8	11	02	02	97	0.6	98	5.5	-1.6	-7.2	0.9	0.9	2.0	3.2	3.6	5.5	X2	1	9.5	4.6	5	1	0	0	0	0	996.5	9.0	4.3	0.9	Snow/sleet falling		
05	8	36	02	22	96	1.4	95	2.9	0.6	-2.6	0.9	1.2	2.8	3.2	3.5	5.4	X3	5	8.7	0.0	5	1	0	0	0	0	989.0	10.0	0.0	0.7	9 3.0		
06	8	04	05	68	94	1.3	98	2.0	0.8	0.2	0.7	1.1	2.6	3.0	3.6	5.2	X2	3	4.3	0.0	5	1	4	1	0	0	990.5	4.0	0.0	0.5	50% snow cover 09GMT		
07	8	32	02	02	97	-1.0	94	4.5	-3.6	-4.8	0.6	0.6	1.7	2.9	3.4	5.1	X1	1	0.0	4.1	0	0	0	0	0	0	996.5	0.0	8.8	0.7	5 1.7		
08	8	24	02	02	97	0.1	97	6.0	-1.7	-4.2	0.9	0.7	1.9	2.7	3.3	5.0	X1	<1	5.2	2.1	1	0	0	0	0	0	1004.5	8.2	8.6	0.4	Hail or ice pellets		
09	8	18	05	61	95	2.8	96	5.0	0.1	-2.9	1.6	1.4	2.4	2.9	3.4	4.9	X1	<1	27.6	0.0	1	0	0	0	0	0	1000.0	22.9	0.0	0.4	1 0.4		
10	8	31	09	21	96	2.7	96	6.7	1.3	0.3	2.5	2.1	2.6	3.2	3.3	4.9	10	0	0.2	5.1	0	0	0	0	0	0	1009.5	0.8	0.0	0.4	Thunder		
11	0	32	02	02	96	0.1	98	8.8	-2.3	-4.5	0.9	0.9	2.4	3.1	3.4	4.7	40	0	0.3	6.5	0	0	0	0	0	0	1017.0	1.0	5.2	0.6	1 0.2		
12	2	33	02	02	97	0.0	95	6.0	-2.3	-4.4	0.9	1.1	2.3	3.3	3.5	4.8	40	0	2.5	4.2	5	0	0	0	0	0	1026.0	1.0	5.4	0.7	Gale		
13	8	36	09	02	97	2.9	94	6.4	0.0	-1.0	3.1	2.7	3.0	3.4	3.6	4.7	10	0	0.0	5.2	0	0	0	0	0	0	1022.0	0.0	2.8	0.5	0 0.3		
14	3	09	02	02	97	-2.0	89	8.6	-4.0	-5.0	0.9	0.9	2.2	3.3	3.6	4.8	40	0	0.0	6.8	0	0	0	0	0	0	1028.5	0.0	10.0	0.9	Fog at 09GMT		
15	8	18	02	02	97	4.3	88	9.3	-2.0	-2.1	2.9	2.6	3.0	3.5	3.5	4.8	10	0	0.2	0.0	0	0	0	0	0	0	1028.0	0.4	0.0	0.4	1 2.4		
16	7	18	02	02	96	5.1	94	11.6	2.8	-0.6	3.1	2.9	3.8	4.0	3.7	4.8	10	0	0.0	5.2	0	0	0	0	0	0	1025.5	0.0	0.0	1.0	Air frost		
17	8	27	05	02	96	7.9	93	11.5	5.1	1.0	4.4	3.9	5.8	4.5	4.2	4.9	10	0	tr	0.0	0	0	0	0	0	0	1025.0	0.0	0.0	0.6	10 9.3		
18	8	29	02	10	95	8.5	92	10.0	7.9	3.9	6.3	5.8	6.0	5.2	4.6	5.0	10	0	1.1	0.0	0	0	0	0	0	0	1026.0	2.9	0.0	0.4	Ground frost		
19	8	28	02	02	07	7.2	99	10.0	6.9	6.0	6.4	6.1	6.0	5.8	5.2	5.2	10	0	tr	0.2	0	0	0	0	0	1	1027.0	0.0	0.0	0.5	14 17.5		
20	8	32	02	02	96	7.0	95	11.9	5.4	1.6	6.0	5.6	6.1	6.0	5.4	5.4	10	0	0.0	7.7	0	0	0	0	0	0	1031.0	0.0	0.0	1.0	0.2mm precipitation		
21	3	30	02	02	97	7.1	80	13.9	3.2	0.1	5.2	5.3	6.0	6.1	5.7	5.6	10	0	0.0	8.8	0	0	0	0	0	0	1031.5	0.0	0.0	1.1	13 11.4		
22	8	29	09	02	97	8.3	82	11.9	7.1	0.7	6.1	5.6	6.5	6.1	5.9	5.8	10	0	0.0	2.4	0	0	0	0	0	0	1026.5	0.0	0.0	1.8	1.0mm precipitation		
23	8	29	05	02	97	9.0	84	10.9	7.3	4.3	6.6	6.2	6.9	6.4	6.1	5.9	10	0	0.0	0.0	0	0	0	0	0	0	1023.0	0.0	0.0	1.1	9 9.1		
24	8	34	02	02	96	8.9	93	11.5	8.4	6.4	7.2	6.9	7.3	6.6	6.2	6.0	10	0	tr	0.0	0	0	0	0	0	0	1026.5	0.0	0.0	0.6	5.0mm precipitation		
25	8	22	02	02	96	9.0	85	10.0	8.8	7.1	7.6	7.2	6.9	7.0	6.5	6.1	10	0	tr	0.0	0	0	0	0	0	0	1027.5	0.0	0.0	0.9	4 3.0		
26	8	23	02	02	96	6.4	95	10.2	5.4	3.4	6.2	6.2	7.0	7.0	6.6	6.3	10	0	0.0	0.0	0	0	0	0	0	0	1024.0	0.0	0.0	0.9	No sunshine		
27	2	22	02	01	97	8.1	96	15.9	6.2	2.2	6.1	6.1	7.0	7.0	6.7	6.5	10	0	0.0	7.5	0	0	0	0	0	0	1019.5	0.0	0.0	1.5	12 9.2		
28	8	22	02	02	97	7.8	83	10.3	7.4	4.1	7.3	7.2	7.5	7.4	6.9	6.6	10	0	0.0	0.0	0	0	0	0	0	0	1015.5	0.0	0.0	1.1	Amonth of two halves. Cold with snow until the 13th then high pressure, warmer and mostly dry. The 9th was the wettest February day since 1933 while 10cm of lying snow on the 2nd was the deepest for any day since before June 1988.		
Monthly means						4.0	92	8.2	2.2	-0.5	3.6	3.4	4.3	4.6	4.6	5.4												1015.6					
Monthly totals																				66.2	76.6							79.2	79.9	21.4			
Highest values						9.0		15.9	8.8	7.1	7.6	7.2	7.5	7.4	6.9	6.6			27.6	8.8								22.9	16.0	1.8			
Lowest values																																	
1971-2000 monthly climatological averages						88	8.3	1.6	-1.3	3.4	3.6	4.5	5.0	5.1	6.1			42.8	67.5										1016.8	45.7	95.2	31.1	

DD: date

07GMT observations

N	cloud cover (oktas, 9=obscured)	dd	wind direction (degrees/10)
ff	wind speed (knots)		
ww	present weather code		
1	cloud decreasing	50	slight drizzle
2	sky not changing	60	intermittent slight rain
3	cloud increasing	61	continuous slight rain
21	recent rain	71	continuous slight snow
25	recent rain shower	95	light thunderstorm
VV	visibility (00-50 metres/100, 94 very poor, 95 poor, 96 moderate, 97 good)		

Soil temperatures are for 0700GMT beneath bare soil (5, 10, 20cm) or grass (30, 50, 100cm)

09GMT observations

Temp	temperature (degC)	RH	relative humidity (%)
E	state of ground (X0 hail, X1 to X9 snow lying, 10 moist, 20 wet, 40 frozen)		
SS	snow depth (cm)		
Press	air pressure (mb)		

24 hour readings

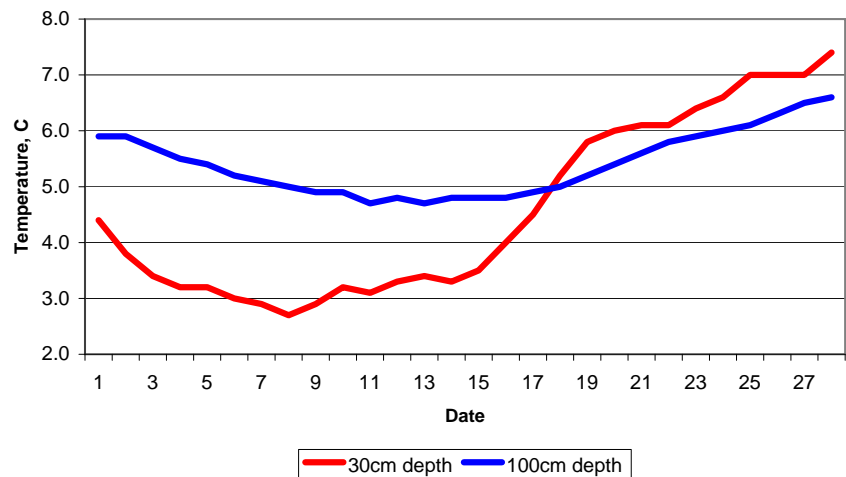
Max	maximum temperature (degC) beginning 09GMT	Min	minimum temperature (degC) ending 09GMT
Gmin	grass minimum temperature (degC) ending 09GMT	Rain	precipitation beginning 09GMT
Sun	sunshine (hours) sunrise-sunset	Rain hrs	hours of rainfall (>0.1mm/h) 09-09GMT
Fr. Hrs	hours of air frost (00-24GMT)	Pch Evap	Piche evaporation (ml) beginning 09GMT

Days with

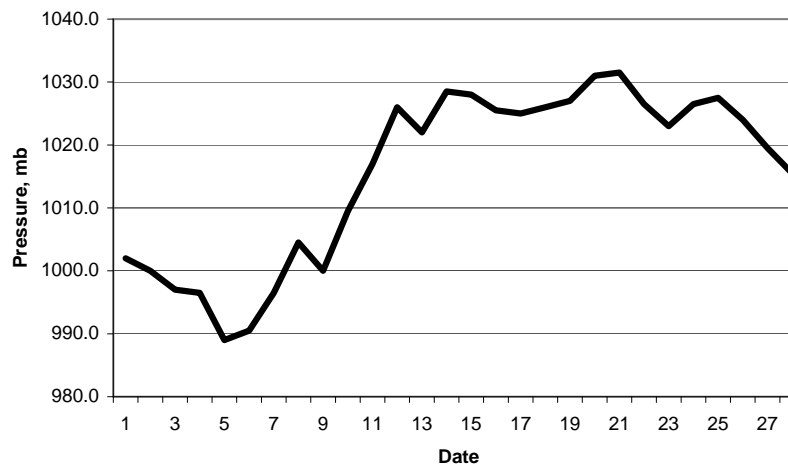
S	snow(5) or sleet(1) falling	L	50% snow cover at 09GMT	H	hail or ice pellets
T	thunder heard	G	gale	F	fog at 09GMT

This information (and data for earlier months) is also available at <http://www.met.rdg.ac.uk/~brugge>

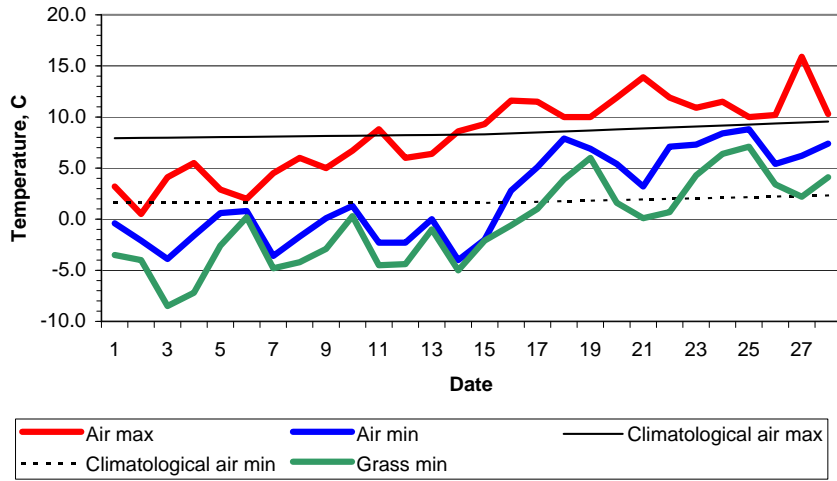
Daily soil temperatures, 0700GMT



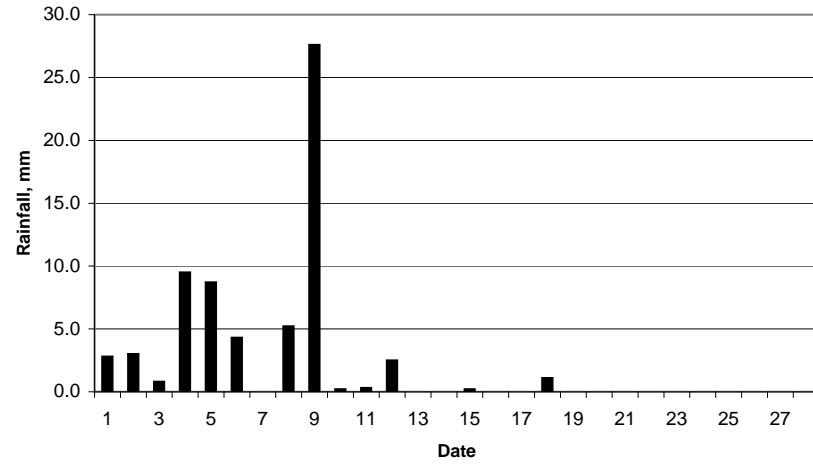
Mean sea level pressure, 0900GMT



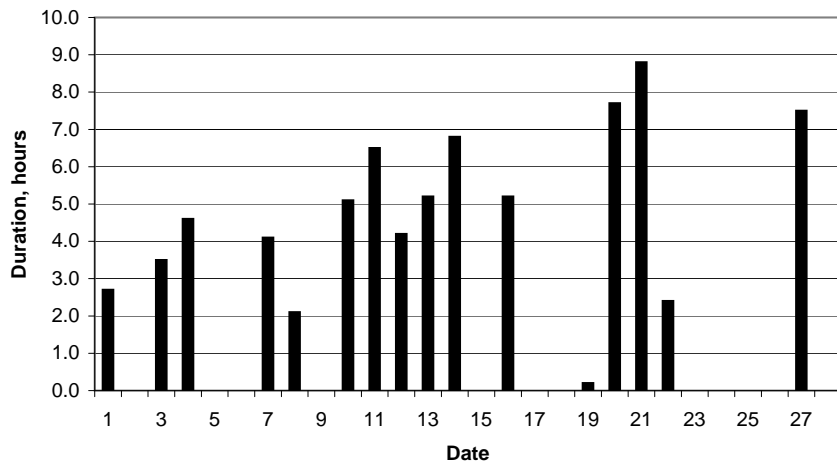
### Daily temperature extremes



### Daily rainfall



### Daily sunshine



### Daily evaporation

