

MAIDENHEAD METEOROLOGICAL OBSERVATIONS FOR FEBRUARY 2007

DD	N	dd	ff	ww	VV	0900GMT		Temperature			Soil temperatures (depth in cm)						E	SS	Rain	Sun	S	L	H	T	G	F	Press	Rain	Fr.	Pch		
						Temp	RH	Max	Min	Gmin	5	10	20	30	50	100												hrs	hrs	Evap		
01	8	25	02	02	97	9.0	96	12.5	3.5	-3.1	6.0	6.1	6.5	6.8	7.2	7.9	10	0	tr	0.1	0	0	0	0	0	0	1030.5	0.0	0.0	0.9	Number of days with 2007 normal Snow/sleet falling 2 3.0 50% snow cover 09GMT 2 1.7 Hail or ice pellets 0 0.4 Thunder 1 0.2 Gale 0 0.3 Fog at 09GMT 0 2.4 Air frost 8 9.3 Ground frost 11 17.5 0.2mm precipitation 19 11.4 1.0mm precipitation 16 9.1 5.0mm precipitation 4 3.0 No sunshine 6 9.2 Some wintry weather during the 5th to 9th. -6.5C on the 7th was the lowest February temperature since 1991, while the 9cm of lying snow on the 8th was the greatest depth in any month since February 1991 also. Overall it was the warmest February since 2002. The most cyclonic February since 1990.	
02	8	22	02	50	95	9.5	97	12.4	3.6	-0.1	6.9	6.6	6.5	7.0	7.1	7.9	10	0	tr	4.3	0	0	0	0	0	1032.5	0.0	0.0	0.6			
03	0	00	00	02	97	0.8	94	12.0	-1.3	-4.8	3.4	4.0	5.8	7.0	7.2	8.0	40	0	0.0	8.0	0	0	0	0	0	1040.5	0.0	5.0	1.1			
04	4	36	05	02	96	-1.2	98	8.2	-3.4	-6.1	2.3	2.8	4.6	6.3	6.9	8.0	40	0	0.0	7.8	0	0	0	0	0	1035.0	0.0	9.5	0.8			
05	8	03	05	02	96	1.4	96	5.1	-1.2	-4.1	3.8	3.8	5.0	6.0	6.8	7.9	10	0	0.0	0.0	0	0	0	0	0	1021.5	0.0	0.0	0.3			
06	2	04	02	02	97	-0.9	91	5.7	-2.2	-6.1	2.4	2.6	4.8	5.8	6.4	7.9	40	0	0.0	5.7	0	0	0	0	0	1011.0	0.0	8.4	1.4			
07	0	04	02	02	97	-4.0	98	6.1	-6.5	-9.0	1.1	1.6	3.0	5.2	6.2	7.6	40	0	6.0	5.8	0	0	0	0	0	1005.5	2.5	11.3	1.1			
08	8	09	02	71	94	0.8	98	3.1	-4.0	-8.8	2.0	2.2	3.6	4.6	6.0	7.6	X3	9	1.5	0.0	5	1	0	0	0	988.5	1.5	0.0	0.1			
09	8	05	02	02	96	1.8	98	6.2	-0.7	-4.9	2.2	1.7	3.6	4.3	5.1	7.1	X2	3	4.3	0.0	5	1	0	0	0	1005.5	7.2	4.0	0.6			
10	8	21	02	60	96	5.5	98	10.2	1.8	0.2	3.8	3.8	4.0	4.5	5.2	7.0	10	0	8.9	0.8	0	0	0	0	0	998.0	7.0	0.0	0.4			
11	7	22	05	02	97	7.5	92	11.7	5.4	4.5	5.7	5.8	6.3	5.7	5.9	6.9	10	0	4.2	3.4	0	0	0	0	0	991.5	5.8	0.0	2.1			
12	8	22	05	60	96	8.5	97	9.4	7.5	5.5	6.5	6.5	6.9	6.5	6.3	6.9	10	0	3.1	0.5	0	0	0	0	0	983.0	2.8	0.0	1.5			
13	4	27	09	02	96	7.8	79	9.4	5.2	2.0	6.0	5.0	6.0	6.6	6.6	7.1	10	0	12.7	2.0	0	0	0	0	0	1010.0	14.3	0.0	0.1			
14	8	31	05	25	96	7.7	98	9.7	7.2	6.6	6.5	6.8	6.9	6.8	6.7	7.2	10	0	0.0	3.0	0	0	0	0	0	1001.5	0.0	0.0	1.4			
15	6	18	05	02	97	8.3	92	11.7	-0.8	-3.5	3.0	3.2	4.5	6.5	6.7	7.2	10	0	0.9	3.1	0	0	0	0	0	1020.0	1.0	1.2	1.9			
16	6	14	02	02	97	9.0	80	12.2	4.0	3.0	5.5	5.5	5.9	6.7	6.7	7.3	10	0	0.0	1.0	0	0	0	0	0	1013.0	0.0	0.0	0.3			
17	7	31	02	02	97	4.5	96	10.6	2.5	-0.5	3.5	3.9	6.9	6.7	6.8	7.3	10	0	0.0	2.7	0	0	0	0	0	1013.0	0.0	0.0	1.2			
18	6	12	02	02	97	8.6	90	8.9	3.9	3.5	6.9	6.6	7.1	7.0	6.8	7.4	10	0	0.5	0.1	0	0	0	0	0	1020.0	0.7	0.0	0.7			
19	8	13	05	02	96	8.6	88	11.2	7.0	6.2	7.2	7.2	7.7	7.1	7.1	7.4	10	0	1.0	0.4	0	0	0	0	0	1012.5	2.3	0.0	0.4			
20	8	18	02	60	96	9.8	96	11.2	8.6	6.9	8.1	7.8	8.0	7.5	7.2	7.5	10	0	4.1	0.0	0	0	0	0	0	1007.5	6.9	0.0	0.6			
21	6	14	02	02	97	8.9	90	13.9	8.5	5.5	8.3	7.9	7.9	7.9	7.5	7.6	10	0	0.2	6.0	0	0	0	0	0	1008.0	0.3	0.0	1.0			
22	8	18	05	50	94	9.3	98	10.4	7.7	4.2	8.1	8.1	7.7	8.1	7.6	7.7	10	0	3.2	0.0	0	0	0	0	0	1004.5	8.6	0.0	0.5			
23	6	17	05	02	97	9.2	97	12.4	7.8	4.4	7.8	7.7	8.5	8.1	7.7	7.9	10	0	2.7	2.4	0	0	0	0	0	1001.5	3.2	0.0	0.6			
24	7	28	02	02	97	9.2	94	13.1	8.5	5.6	8.4	8.3	8.2	8.4	7.8	7.9	10	0	3.7	1.8	0	0	0	0	0	994.5	3.5	0.0	1.0			
25	8	27	05	21	97	7.6	92	11.0	5.8	4.8	7.7	8.9	8.1	8.5	8.1	8.0	10	0	3.5	1.3	0	0	0	0	0	995.0	3.1	0.0	0.9			
26	7	27	09	02	97	8.4	76	11.0	7.6	4.9	7.8	7.7	7.3	8.4	8.1	8.1	10	0	7.0	6.1	0	0	0	0	0	1013.0	5.5	0.0	1.3			
27	8	18	05	61	94	9.0	98	12.1	3.2	0.9	6.7	6.7	7.3	8.1	8.1	8.2	10	0	4.8	0.0	0	0	0	0	0	1010.0	2.9	0.0	1.2			
28	5	28	19	25	97	8.5	88	11.0	6.5	5.0	8.0	7.9	8.1	8.3	8.0	8.3	10	0	2.2	4.5	0	0	0	1	0	996.0	2.4	0.0	1.7			
Monthly means						6.2	93	10.1	3.4	0.8	5.6	5.6	6.3	6.8	6.9	7.6											1009.4					
Monthly totals																				74.5	70.8							81.5	39.4	25.7		
Highest values						9.8		13.9	8.6	6.9	8.4	8.9	8.5	8.5	8.1	8.3				12.7	8.0							14.3	11.3	2.1		
Lowest values						-4.0	76	3.1	-6.5	-9.0	1.1	1.6	3.0	4.3	5.1	6.9																
1971-2000 monthly climatological averages						88	8.3	1.6	-1.3	3.4	3.6	4.5	5.0	5.1	6.1						42.8	67.5							1016.8	45.7	95.2	31.1

DD: date

07GMT observations

N	cloud cover (oktas, 9=obscured)	dd	wind direction (degrees/10)
ff	wind speed (knots)		
ww	present weather code		
1	cloud decreasing	50	slight drizzle
2	sky not changing	60	intermittent slight rain
3	cloud increasing	61	continuous slight rain
21	recent rain	71	continuous slight snow
25	recent rain shower	95	light thunderstorm
VV	visibility (00-50 metres/100, 94 very poor, 95 poor, 96 moderate, 97 good)		

Soil temperatures are for 0700GMT beneath bare soil (5, 10, 20cm) or grass (30, 50, 100cm)

09GMT observations

Temp	temperature (degC)	RH	relative humidity (%)
E	state of ground (X0 hail, X1 to X6 snow lying, 10 moist, 20 wet, 40 frozen)		
SS	snow depth (cm)		
Press	air pressure (mb)		

24 hour readings

Max	maximum temperature (degC) beginning 09GMT	Min	minimum temperature (degC) ending 09GMT
Gmin	grass minimum temperature (degC) ending 09GMT	Rain	precipitation beginning 09GMT
Sun	sunshine (hours) sunrise-sunset	Rain hrs	hours of rainfall (>0.1mm/h) 09-09GMT
Fr. Hrs	hours of air frost (00-24GMT)	Pch Evap	Piche evaporation (ml) beginning 09GMT

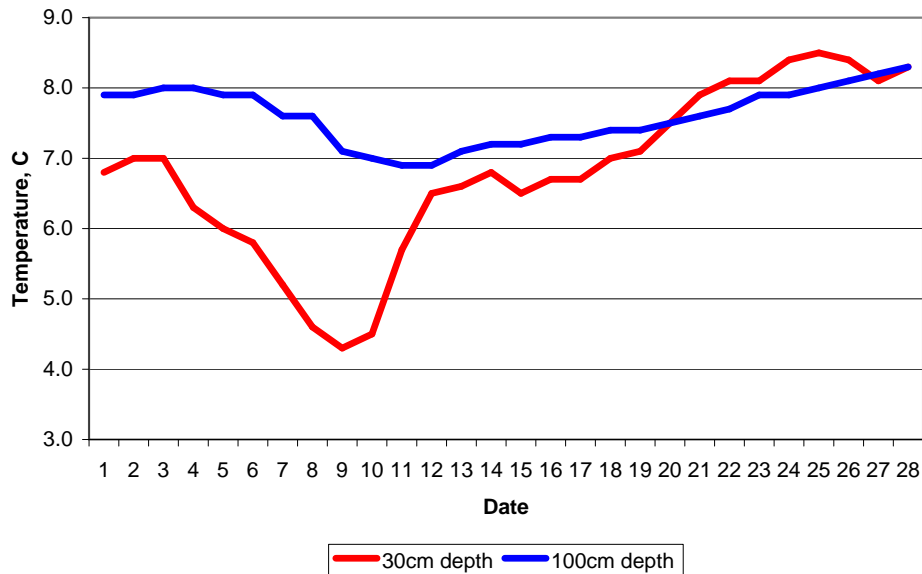
Days with

S	snow(5) or sleet(1) falling	L	50% snow cover at 09GMT	H	hail or ice pellets
T	thunder heard	G	gale	F	fog at 09GMT

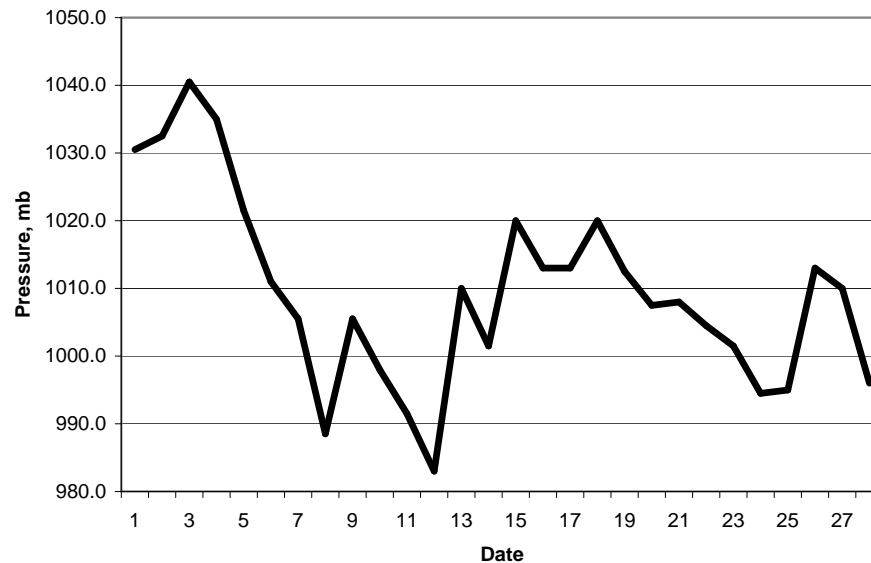
This information (and data for earlier months) is also available at

<http://www.met.rdg.ac.uk/~brugge>

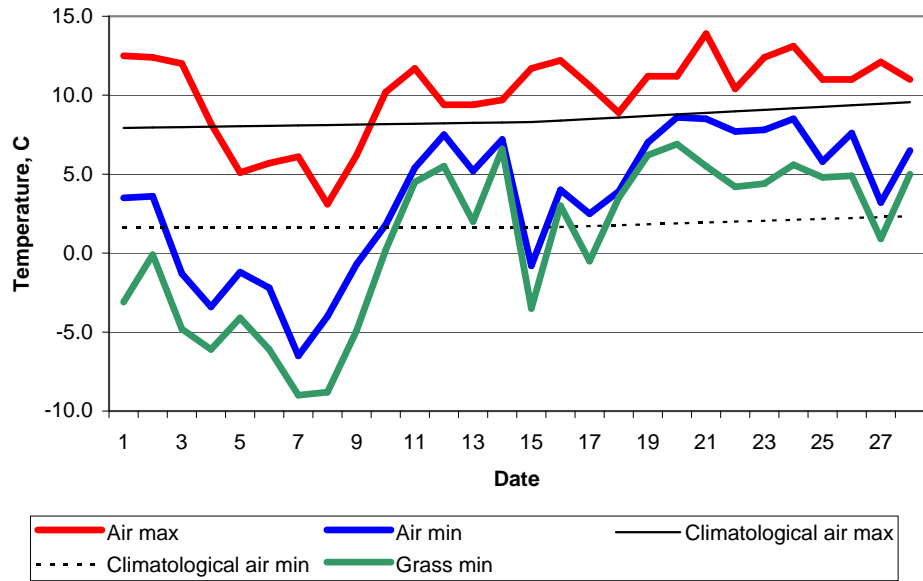
Daily soil temperatures, 0700GMT



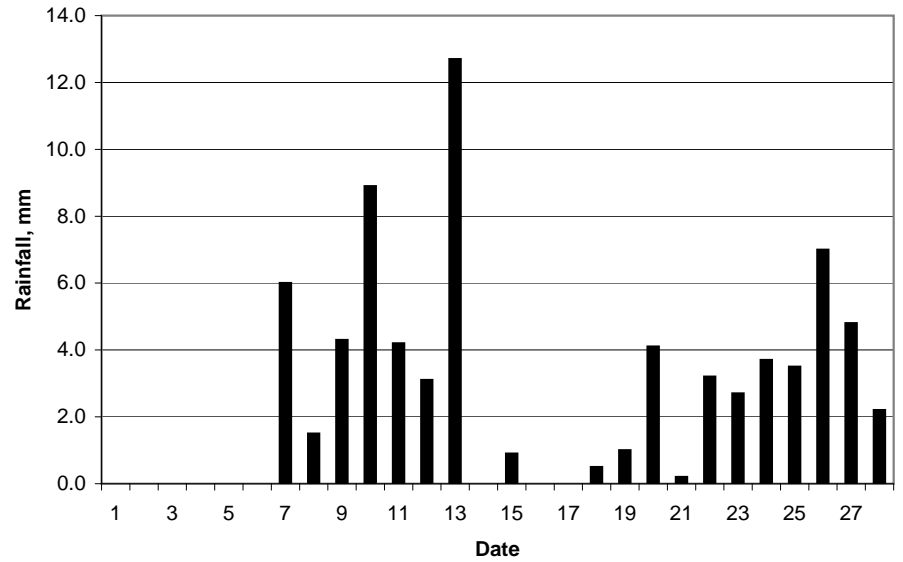
Mean sea level pressure, 0900GMT



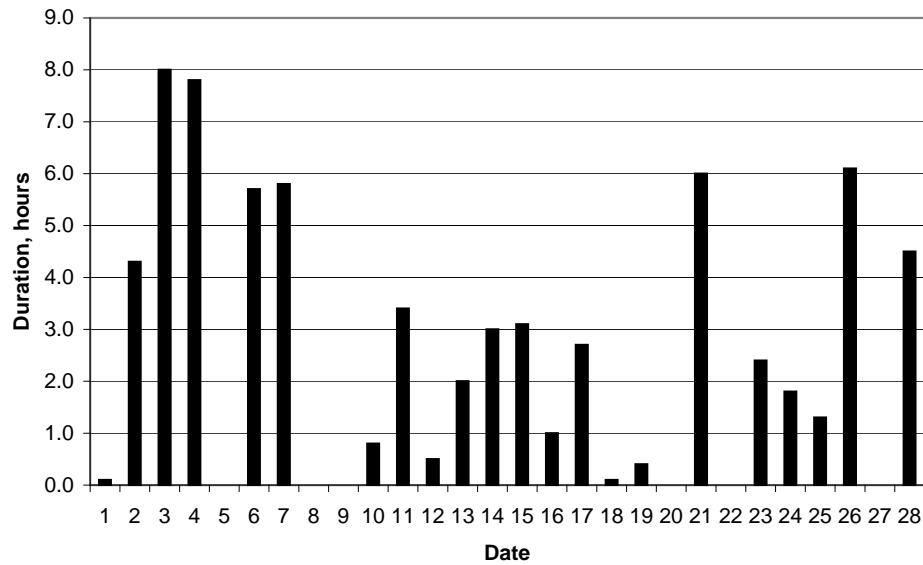
### Daily temperature extremes



### Daily rainfall



### Daily sunshine



### Daily evaporation

