

MAIDENHEAD METEOROLOGICAL OBSERVATIONS FOR FEBRUARY 2006

DD	N	dd	ff	ww	VV	0900GMT		Temperature			Soil temperatures (depth in cm)						E	SS	Rain	Sun	S	L	H	T	G	F	Press	Rain	Fr.	Pch			
						Temp	RH	Max	Min	Gmin	5	10	20	30	50	100												hrs	hrs	Evap			
01	8	22	02	02	94	1.4	83	1.4	1.1	-0.2	3.0	2.9	3.6	4.6	4.6	6.1	10	0	0.0	0.0	0	0	0	0	0	0	1024.0	0.0	0.0	0.3	Number of		
02	8	22	02	02	94	-0.5	94	0.0	-0.9	-0.9	2.2	2.2	3.2	4.4	4.5	6.0	10	0	0.0	0.0	0	0	0	0	0	0	1023.5	0.0	23.5	0.3	days with		
03	8	00	00	02	95	-2.0	88	3.5	-3.2	-4.1	1.1	1.1	2.8	3.9	4.3	6.0	40	0	tr	0.0	5	0	0	0	0	0	1025.0	0.0	12.5	0.8	2006 normal		
04	8	04	02	02	95	3.5	84	5.4	-2.1	-2.1	2.5	2.3	2.9	3.8	4.1	5.9	10	0	tr	0.1	0	0	0	0	0	1	1029.5	0.0	0.0	0.5	Snow/sleet falling		
05	9	00	00	45	01	0.9	99	8.5	-0.6	-2.1	1.9	1.8	3.9	3.9	4.0	5.6	10	0	0.0	2.9	0	0	0	0	0	0	1033.0	0.0	2.3	1.0	6 3.0		
06	8	32	05	02	96	5.2	77	7.9	0.7	0.6	4.0	3.9	4.1	4.3	4.3	5.7	10	0	0.0	0.0	0	0	0	0	0	0	1030.0	0.0	0.0	0.7	50% snow cover 09GMT		
07	8	27	02	02	97	7.9	92	9.0	5.2	3.9	5.0	4.5	4.7	4.8	4.7	5.6	10	0	2.5	1.1	0	0	0	0	0	0	1024.5	2.7	0.0	0.8	0 1.7		
08	0	27	05	02	97	5.0	78	10.2	3.4	0.7	3.8	3.9	5.0	5.1	4.8	5.8	10	0	0.0	7.5	0	0	0	0	0	0	1010.0	0.0	0.0	1.2	Hail or ice pellets		
09	4	32	02	02	97	1.6	80	6.5	1.5	-1.9	3.0	3.2	4.2	5.1	5.2	5.9	10	0	0.0	8.7	0	0	0	0	0	0	1017.5	0.0	0.0	1.6	0 0.4		
10	1	22	02	02	97	-1.2	98	7.0	-1.8	-5.9	1.1	1.4	3.1	4.5	4.7	6.0	40	0	0.0	7.8	0	0	0	0	0	0	1024.5	0.0	9.5	0.8	Thunder		
11	7	00	00	03	96	-1.6	98	7.0	-3.5	-5.8	1.0	1.1	2.6	4.0	4.6	6.0	40	0	7.4	1.3	0	0	0	0	0	0	1027.5	5.7	10.4	0.5	0 0.2		
12	8	24	02	61	94	5.0	98	9.1	-1.6	-4.1	3.3	2.8	3.1	4.0	4.3	6.0	10	0	7.0	0.0	0	0	0	0	0	0	1023.5	9.0	0.0	0.1	Gale		
13	8	22	02	10	94	8.1	98	10.9	5.0	1.9	4.9	4.4	4.7	4.7	4.5	5.8	10	0	tr	0.2	0	0	0	0	0	0	1019.0	0.0	0.0	0.7	0 0.3		
14	8	18	02	60	96	7.3	98	11.7	6.5	5.1	5.6	5.4	5.2	5.5	5.2	5.8	10	0	11.3	4.4	0	0	0	0	0	0	1011.5	7.2	0.0	1.1	Fog at 09GMT		
15	1	20	09	01	07	10.1	90	12.4	7.3	3.0	6.6	6.2	6.2	6.0	5.4	6.0	10	0	1.7	4.9	0	0	0	0	0	0	994.5	1.4	0.0	1.1	2 2.4		
16	8	22	13	60	97	7.5	93	10.3	4.1	-0.4	4.7	5.2	5.9	6.5	5.8	6.1	10	0	1.2	5.8	0	0	0	0	0	0	986.5	1.0	0.0	0.9	Air frost		
17	8	25	05	02	97	6.4	93	11.0	4.3	0.4	5.5	5.5	5.8	6.4	5.9	6.4	10	0	0.0	4.4	0	0	0	0	0	0	985.0	0.0	0.0	0.8	8 9.3		
18	8	22	02	02	96	1.0	99	7.5	-0.8	-3.6	3.3	4.0	5.0	6.0	6.0	6.4	10	0	0.0	0.0	0	0	0	0	0	1	992.0	0.0	6.2	0.4	Ground frost		
19	8	04	09	02	97	6.0	95	7.0	1.0	0.1	5.4	5.1	5.3	5.9	5.8	6.5	10	0	7.9	0.0	0	0	0	0	0	0	997.5	6.9	0.0	0.8	17 17.5		
20	8	05	13	02	97	5.4	68	7.6	4.4	2.9	4.4	4.4	5.2	5.9	5.7	6.4	10	0	tr	2.8	0	0	0	0	0	0	1010.5	0.0	0.0	1.5	0.2mm precipitation		
21	7	03	13	21	97	2.9	91	6.2	2.3	-0.4	3.4	3.3	4.5	5.6	5.6	6.4	10	0	0.5	4.1	0	0	0	0	0	0	1020.0	1.2	0.0	1.5	9 11.4		
22	8	05	13	21	96	3.2	96	3.6	2.4	1.0	3.8	3.8	4.6	5.3	5.5	6.4	10	0	tr	0.0	0	0	0	0	0	0	1024.5	0.0	0.0	1.2	1.0mm precipitation		
23	8	02	05	02	96	1.6	98	3.0	1.5	0.0	2.8	2.8	3.9	5.1	5.2	6.3	10	0	3.1	0.0	5	0	0	0	0	0	1028.0	6.9	0.0	0.5	8 9.1		
24	8	04	09	22	96	1.5	77	4.6	0.9	-0.9	2.3	2.4	3.6	4.6	4.8	6.2	10	0	0.0	2.1	5	0	0	0	0	0	1018.5	0.0	0.0	1.4	5.0mm precipitation		
25	5	05	13	02	97	3.2	76	8.1	1.0	-0.4	2.3	2.4	3.5	4.5	4.7	6.1	10	0	tr	8.2	0	0	0	0	0	0	1019.5	0.0	0.0	2.0	4 3.0		
26	8	04	13	95	97	2.4	74	7.7	1.4	-0.3	2.8	2.7	3.9	4.5	4.7	6.0	10	0	tr	4.0	5	0	0	0	0	0	1025.0	0.0	0.0	1.4	No sunshine		
27	8	32	09	02	97	3.3	86	6.6	2.2	-1.1	3.2	3.3	3.9	4.6	4.7	6.0	10	0	tr	0.0	5	0	0	0	0	0	1022.0	0.0	0.0	1.3	10 9.2		
28	2	33	09	02	97	3.3	69	7.5	1.3	-1.9	4.0	2.9	4.1	4.8	4.7	5.9	10	0	tr	7.3	5	0	0	0	0	0	1009.0	0.0	0.0	1.6	Snowfall during the final week of the month was slight and air frosts were of normal frequency. Daytime temperatures were slightly below average while both rainfall and sunshine amounts were close to normal.		
Monthly means						3.5	88	7.2	1.5	-0.6	3.5	3.4	4.2	4.9	4.9	6.0											1016.3						
Monthly totals																				42.6	77.6							42.0	64.4	26.8			
Highest values						10.1		12.4	7.3	5.1	6.6	6.2	6.2	6.5	6.0	6.5				11.3	8.7							9.0	23.5	2.0			
Lowest values						-2.0	68	0.0	-3.5	-5.9	1.0	1.1	2.6	3.8	4.0	5.6																	
1971-2000 monthly climatological averages						88	8.3	1.6	-1.3	3.4	3.6	4.5	5.0	5.1	6.1					42.8	67.5							1016.8	45.7	95.2	31.1		

Key

DD: date

07GMT observations

N cloud cover (oktas, 9=obscured) dd wind direction (degrees/10)
ff wind speed (knots)
ww present weather code
2 sky not changing 45 fog
3 cloud increasing 60 intermittent slight rain
10 mist 61 continuous slight rain
21 recent rain 95 light thunderstorm
VV visibility (00-50 metres/100, 94 very poor, 95 poor, 96 moderate, 97 good)
Soil temperatures are for 0700GMT beneath bare soil (5, 10, 20cm) or grass (30, 50, 100cm)

09GMT observations

Temp temperature (degC) RH relative humidity (%)
E state of ground (X0 hail, X5 slight snow, X6 over half snow cover, 10 moist, 20 wet, 40 frozen)
SS snow depth (cm)
Press air pressure (mb)

24 hour readings

Max maximum temperature (degC) beginning 09GMT Min minimum temperature (degC) ending 09GMT
Gmin grass minimum temperature (degC) ending 09GMT Rain precipitation beginning 09GMT
Sun sunshine (hours) sunrise-sunset Rain hrs hours of rainfall (>0.1mm/h) 09-09GMT
Fr. Hrs hours of air frost (00-24GMT) Pch Evap Piche evaporation (ml) beginning 09GMT

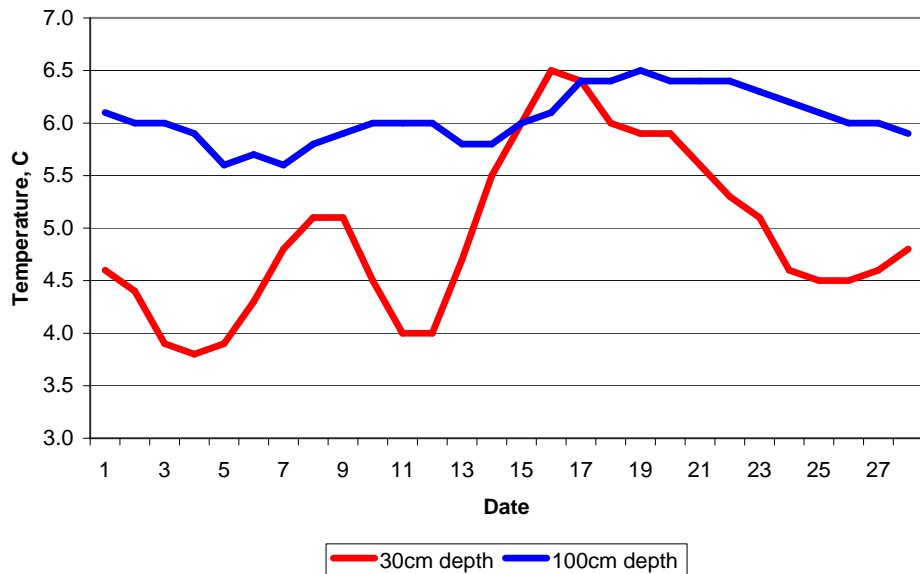
Days with

S snow(5) or sleet(1) falling L 50% snow cover at 09GMT H hail or ice pellets
T thunder heard G gale F fog at 09GMT

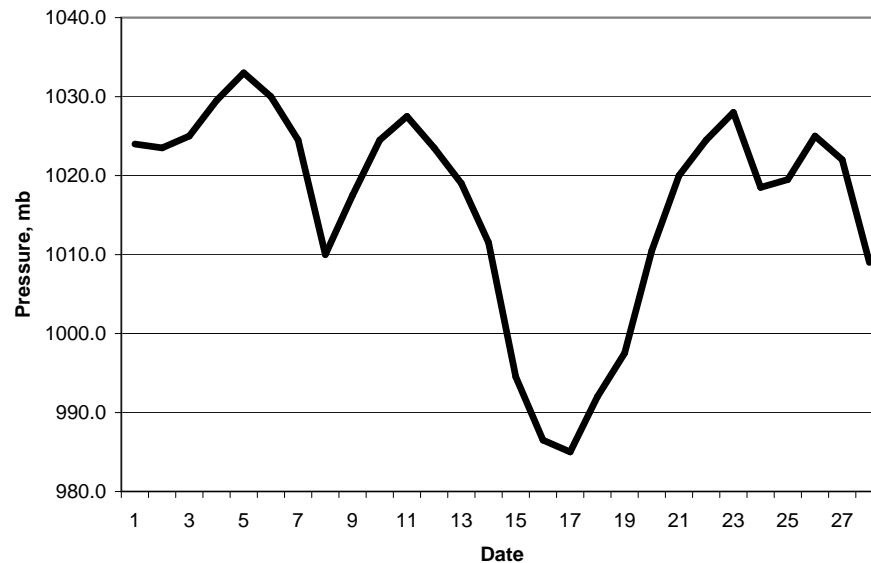
This information (and data for earlier months) is also available at

<http://www.met.rdg.ac.uk/~brugge>

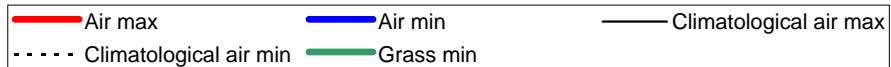
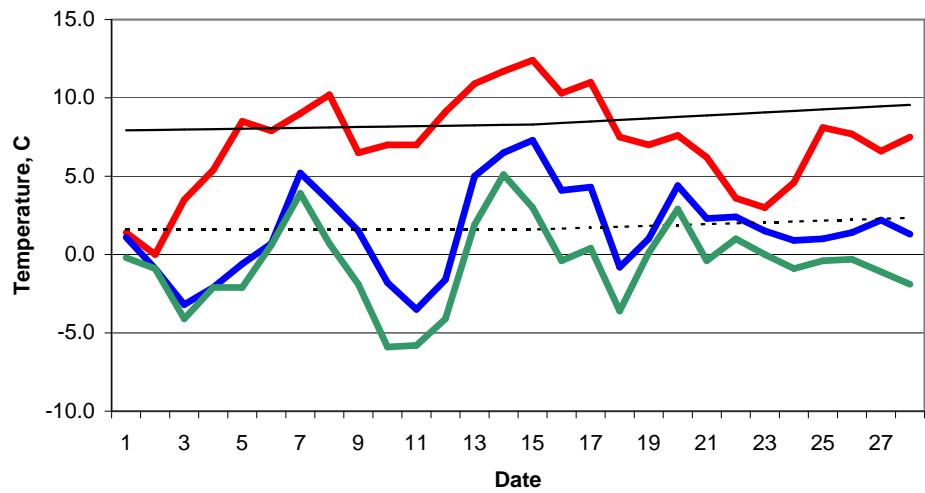
Daily soil temperatures, 0700GMT



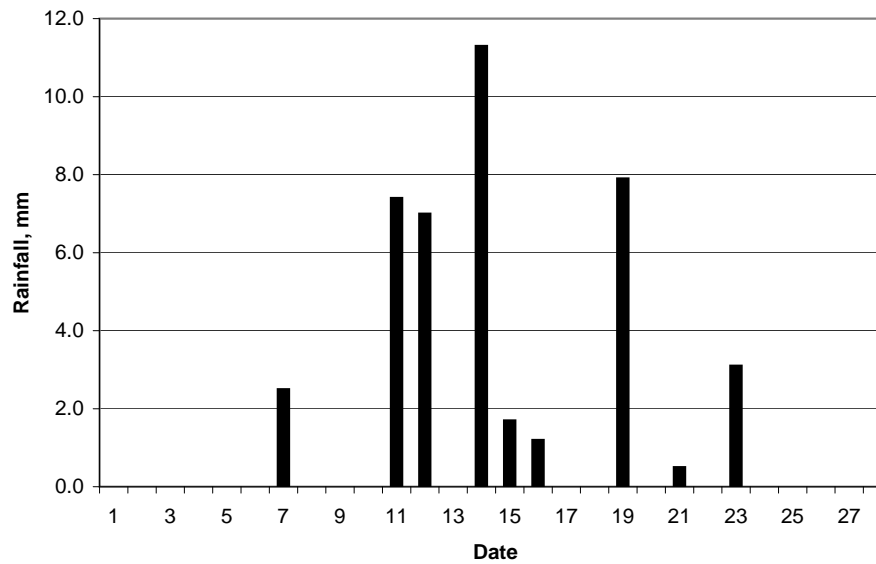
Mean sea level pressure, 0900GMT



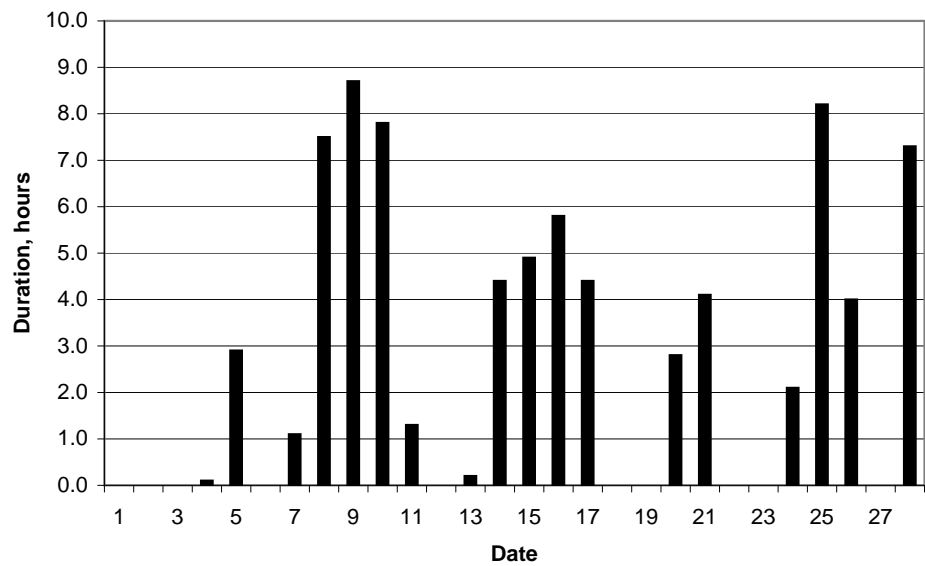
Daily temperature extremes



Daily rainfall



Daily sunshine



Daily evaporation

