

MAIDENHEAD METEOROLOGICAL OBSERVATIONS FOR FEBRUARY 2005

		0900GMT		Temperature		Soil temperatures (depth in cm)																Rain	Fr.	Pch								
DD	N	dd	ff	ww	VV	Temp	RH	Max	Min	Gmin	5	10	20	30	50	100	E	SS	Rain	Sun	S	L	H	T	G	F	Press	hrs	hrs	Evap		
01	8	04	02	02	96	7.7	94	9.6	7.6	1.6	7.3	7.5	6.3	6.5	6.2	6.9	10	0	tr	0.2	0	0	0	0	0	0	1035.5	0.0	0.0	0.8	Number of	
02	8	32	02	02	96	6.7	79	8.5	6.2	5.1	6.2	6.2	6.8	6.5	6.4	7.1	10	0	0.0	0.0	0	0	0	0	0	1038.5	0.0	0.0	0.8	days with		
03	8	27	02	02	96	7.0	95	10.5	3.5	2.9	5.9	5.8	6.2	6.7	6.8	7.1	10	0	0.0	0.0	0	0	0	0	0	1038.5	0.0	0.0	0.4	2005 normal		
04	8	25	02	02	96	7.1	93	9.4	6.5	4.5	7.0	6.7	7.0	7.1	6.8	7.2	10	0	0.0	0.0	0	0	0	0	0	1034.0	0.0	0.0	0.4	Snow/sleet falling		
05	6	15	05	02	95	4.6	95	7.4	0.2	-4.0	3.9	4.4	5.9	6.9	6.8	7.4	10	0	0.3	0.3	0	0	0	0	0	1020.0	0.5	0.0	0.4	8 3.0		
06	8	10	05	02	97	6.7	95	10.2	4.6	1.4	5.9	5.7	6.0	6.6	6.6	7.4	10	0	0.0	1.2	0	0	0	0	0	1021.5	0.0	0.0	0.7	50% snow cover 09GMT		
07	8	14	02	41	09	3.4	98	7.0	0.3	-3.0	3.8	4.2	5.5	6.5	6.8	7.4	10	0	0.0	0.0	0	0	0	0	1	1025.0	0.0	0.0	0.1	2 1.7		
08	8	18	02	41	09	4.6	96	9.1	0.5	-2.9	4.5	4.4	5.1	5.9	6.4	7.3	10	0	tr	0.0	0	0	0	0	1	1026.0	0.0	0.0	0.3	Hail or ice pellets		
09	8	25	02	02	97	8.2	93	10.5	2.5	-1.5	5.7	5.3	5.2	6.1	6.5	7.3	10	0	tr	0.2	0	0	0	0	0	1028.0	0.0	0.0	1.1	1 0.4		
10	8	23	09	02	95	10.5	84	11.1	8.2	4.2	7.3	6.8	6.7	6.6	6.6	7.2	10	0	4.3	0.0	0	0	0	0	0	1023.5	7.2	0.0	0.5	Thunder		
11	8	03	05	02	95	6.4	97	12.6	5.9	4.4	7.1	7.2	7.4	7.3	6.8	7.4	10	0	3.7	0.0	0	0	0	0	0	1023.5	8.5	0.0	0.3	0 0.2		
12	7	25	09	02	97	12.6	83	13.9	6.4	4.4	9.1	8.8	8.1	7.6	7.2	7.5	10	0	1.5	6.0	0	0	0	0	0	1005.5	1.0	0.0	1.8	Gale		
13	7	31	05	27	97	3.6	87	6.9	3.2	0.7	5.2	5.8	7.0	7.6	7.4	7.5	X0	0	tr	6.3	0	0	5	0	0	1007.5	0.0	0.0	2.2	0 0.3		
14	7	33	09	02	97	3.4	74	7.4	2.3	-0.8	2.9	3.6	5.3	6.9	7.1	7.6	10	0	0.0	3.6	0	0	0	0	0	1023.5	0.0	0.0	2.1	Fog at 09GMT		
15	5	36	02	02	97	1.8	90	7.6	1.5	-1.5	2.9	3.4	5.0	6.1	6.7	7.6	10	0	0.0	6.1	0	0	0	0	0	1025.0	0.0	0.0	1.9	2 2.4		
16	7	36	05	01	97	2.9	78	4.9	1.8	-2.9	3.3	3.3	4.5	5.8	6.4	7.5	10	0	0.0	0.0	0	0	0	0	0	1031.5	0.0	0.0	0.9	Air frost		
17	8	31	02	02	97	2.3	88	6.8	-0.9	-4.5	2.8	2.9	4.2	5.4	6.2	7.3	10	0	1.0	0.0	0	0	0	0	0	1030.0	2.7	5.0	0.2	5 9.3		
18	7	22	02	02	96	5.0	95	9.6	1.5	-1.0	3.9	4.4	5.1	5.5	5.7	7.1	10	0	0.6	1.8	0	0	0	0	0	1026.5	0.8	0.0	1.3	Ground frost		
19	0	35	13	02	97	3.9	68	6.4	3.0	-0.4	3.3	3.7	5.0	5.9	5.8	7.1	10	0	0.0	7.5	0	0	0	0	0	1021.5	0.0	0.0	2.1	19 17.5		
20	1	36	13	02	97	1.1	72	5.0	-0.8	-3.6	1.1	1.7	3.9	5.5	5.9	7.1	10	0	tr	3.8	0	0	0	0	0	1020.0	0.0	4.2	1.5	0.2mm precipitation		
21	8	02	05	02	97	1.5	87	5.5	0.0	-2.0	2.4	2.7	4.0	5.0	5.6	6.9	X5	tr	0.4	4.1	5	0	0	0	0	1015.0	1.2	0.0	0.8	12 11.4		
22	8	07	09	70	96	2.1	79	4.9	0.6	-2.1	2.2	2.3	3.8	4.9	5.4	6.9	X6	1	tr	3.8	5	1	3	0	0	1018.0	0.0	0.0	0.7	1.0mm precipitation		
23	7	04	05	72	95	0.4	95	4.2	-0.5	-3.5	1.7	1.7	3.1	4.6	5.2	6.6	X5	tr	0.3	3.6	5	0	0	0	0	1018.0	0.5	2.5	1.5	6 9.1		
24	8	09	05	68	95	1.3	96	2.8	0.2	-1.5	2.2	2.2	3.5	4.4	5.0	6.5	X5	tr	1.5	0.2	5	0	0	0	0	1016.5	7.0	0.0	0.2	5.0mm precipitation		
25	7	04	02	70	95	0.3	87	3.9	-0.8	-3.0	1.1	1.6	3.0	4.3	4.8	6.5	X6	1	0.3	1.1	5	1	0	0	0	1022.0	2.0	2.2	0.9	0 3.0		
26	8	36	02	02	96	3.5	96	5.6	0.3	-3.6	2.5	2.2	3.0	4.4	4.4	6.3	10	0	0.5	0.0	1	0	0	0	0	1022.5	1.2	0.0	0.8	No sunshine		
27	7	34	05	02	97	1.4	78	4.6	0.1	-2.6	1.1	1.5	3.0	4.0	4.5	6.1	X5	tr	tr	7.0	5	0	3	0	0	1029.5	0.0	5.0	0.2	10 9.2		
28	1	14	02	02	97	-3.0	95	5.0	-5.3	-9.0	0.6	0.9	2.4	3.6	4.4	6.1	40	0	1.0	3.3	5	0	0	0	0	1032.0	2.0	10.0	1.6	A month of two halves.		
Monthly means						4.2	88	7.5	2.1	-0.9	4.0	4.2	5.1	5.9	6.1	7.1											1024.2					
Monthly totals																15.4	60.1			34.6	28.9	26.5										
Highest values						12.6	13.9		8.2	5.1	9.1	8.8	8.1	7.6	7.4	7.6			4.3	7.5			8.5	10.0	2.2							
Lowest values						-3.0	68	2.8	-5.3	-9.0	0.6	0.9	2.4	3.6	4.4	6.1																
1971-2000 monthly climatological averages						88	8.3	1.6	-1.3	3.4	3.6	4.5	5.0	5.1	6.1			42.8	67.5			1016.8	45.7	95.2	31.1							

PTO

Key

DD: date

07GMT observations

N cloud cover (oktas, 9=obscured)                      dd wind direction (degrees/10)  
ff wind speed (knots)  
ww present weather code  
  1 cloud decreasing  
  2 sky not changing  
  3 cloud increasing  
  50 intermittent slight drizzle  
  60 intermittent slight rain  
  61 continuous slight rain  
  70 intermittent slight snow  
VV visibility (00-50 metres/100, 94 very poor, 95 poor, 96 moderate, 97 good)  
Soil temperatures are for 0700GMT beneath bare soil (5, 10, 20cm) or grass (30, 50, 100cm)

09GMT observations

Temp temperature (degC)                                      RH relative humidity (%)  
E state of ground (X0 hail, X5 slight snow, X6 over half snow cover, 10 moist, 20 wet, 40 frozen)  
SS snow depth (cm)  
Press air pressure (mb)

24 hour readings

Max maximum temperature (degC) beginning 09GMT                      Min minimum temperature (degC) ending 09GMT  
Gmin grass minimum temperature (degC) ending 09GMT                      Rain precipitation beginning 09GMT  
Sun sunshine (hours) sunrise-sunset                                      Rain hrs hours of rainfall (>0.1mm/h) 09-09GMT  
Fr. Hrs hours of air frost (00-24GMT)                                      Pch Evap Piche evaporation (ml) beginning 09GMT

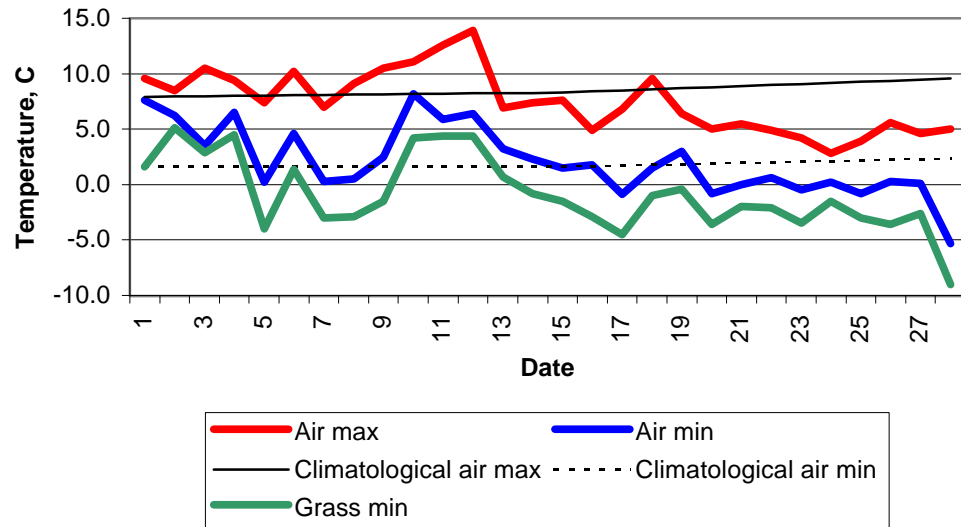
Days with

S snow(5) or sleet(1) falling                      L 50% snow cover at 09GMT                      H hail or ice pellets  
T thunder heard                                      G gale    F fog at 09GMT

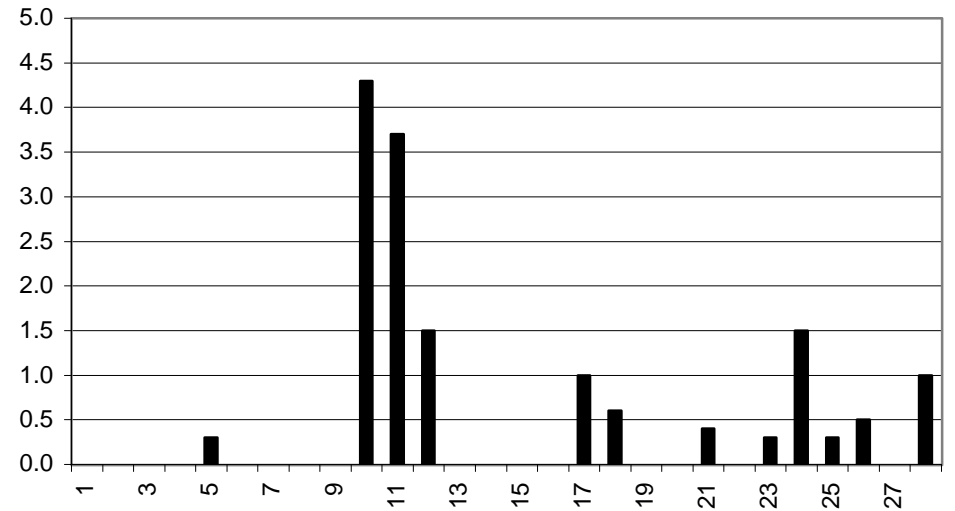
This information (and data for earlier months) is also available at

<http://www.met.rdg.a.uk/~brugge>

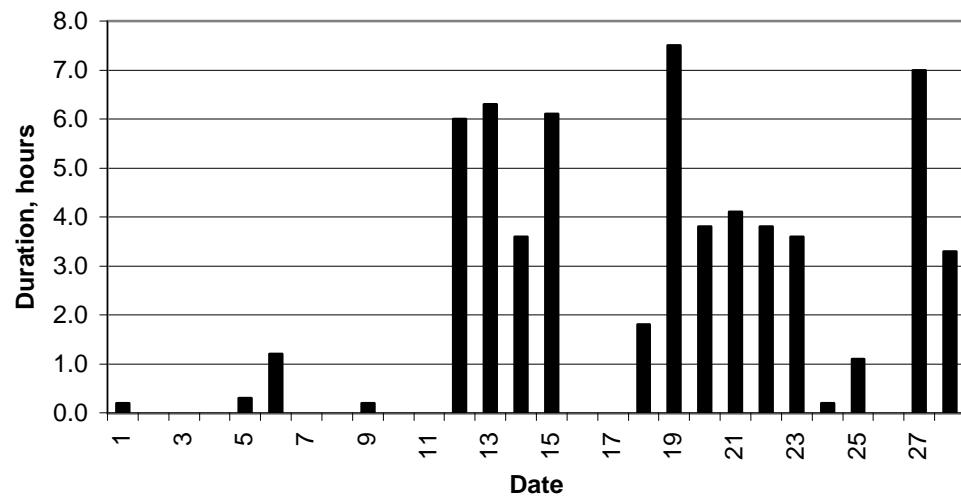
### Daily temperature extremes



### Daily rainfall



### Daily sunshine



### Daily evaporation

