

MAIDENHEAD METEOROLOGICAL OBSERVATIONS FOR DECEMBER 2018

DD	N	dd	ff	ww	VV	0900GMT		Temperature			Soil temperatures (depth in cm)						E	SS	Rain	Sun	S	L	H	T	G	F	Press	Rain hrs	Fr. hrs	Pch Evap	
						Temp	RH	Max	Min	Gmin	5	10	20	30	50	100															
01	8	18	05	61	95	9.6	83	13.4	3.2	-1.0	7.2	6.7	7.5	8.2	8.6	9.9	20	0	3.0	0.0	0	0	0	0	0	0	1004.5	2.8	0.0	0.6	Number of days with 2018 normal Snow/sleet falling 0 2.1 50% snow cover 09GMT 0 1.5 Hail or ice pellets 1 0.4 Thunder 0 0.2 Gale 0 0.1 Fog at 09GMT 2 2.1 Air frost 4 9.3 Ground frost 13 16.7 0.2mm precipitation 18 14.7 1.0mm precipitation 13 10.9 5.0mm precipitation 5 4.7 No sunshine 13 13.7 A mild, wet and slightly duller month than normal. The second warmest December of the past 30 years; only the unusually mild December of 2015 was milder in that time. A rather dull end to the month (with just 4.1 h in the final 9 days under high pressure). No snow fell and there were only 4 days with air frost (5 days less than normal).
02	8	27	02	02	96	13.4	91	14.6	9.6	8.0	10.3	9.9	9.4	9.0	8.7	9.9	10	0	0.5	0.5	0	0	0	0	0	998.5	0.2	0.0	0.9		
03	7	22	05	02	97	12.5	80	13.4	10.7	7.1	9.6	9.5	9.7	9.6	9.2	9.9	10	0	1.2	1.9	0	0	0	0	0	998.0	2.2	0.0	0.6		
04	2	31	02	02	96	0.6	88	8.3	-0.6	-2.6	4.8	5.4	7.7	9.1	9.4	10.0	10	0	5.8	2.8	0	0	0	0	0	1021.0	9.5	2.2	0.6		
05	8	13	02	02	94	8.3	94	12.4	0.6	-1.0	7.3	7.3	7.8	8.5	8.7	10.1	20	0	2.3	0.0	0	0	0	0	0	1015.5	2.5	0.0	0.6		
06	8	27	02	02	96	11.3	91	13.0	8.0	3.2	9.1	8.8	8.5	9.0	8.8	10.0	10	0	6.3	0.0	0	0	0	0	0	1015.0	6.8	0.0	0.4		
07	8	22	09	61	95	12.4	90	12.4	11.3	10.0	10.7	10.6	10.2	9.7	9.2	10.0	20	0	4.1	1.3	0	0	5	0	0	1000.0	2.2	0.0	1.4		
08	7	27	09	02	97	8.9	73	11.8	6.5	3.5	7.2	7.2	8.4	9.2	9.2	10.1	10	0	2.0	1.5	0	0	0	0	0	1006.5	1.0	0.0	1.6		
09	6	27	09	02	97	9.4	81	10.6	8.9	5.8	8.1	7.8	8.4	9.0	9.1	10.1	10	0	0.2	3.8	0	0	0	0	0	1005.5	0.1	0.0	0.8		
10	7	27	02	02	97	7.2	80	9.4	5.6	0.5	6.8	7.1	7.9	8.6	8.9	10.1	10	0	tr	0.0	0	0	0	0	0	1027.0	0.0	0.0	0.5		
11	0	00	00	41	09	1.2	87	7.8	0.9	-1.5	4.8	5.1	7.0	8.3	8.7	10.0	10	0	0.0	4.4	0	0	0	0	1	1026.0	0.0	0.0	0.2		
12	8	13	05	02	97	7.0	88	7.2	1.2	0.0	6.0	5.8	6.7	7.7	8.2	10.0	10	0	0.0	0.0	0	0	0	0	0	1022.5	0.0	0.0	1.1		
13	5	13	09	01	97	2.3	77	5.5	2.2	-1.2	3.3	3.4	5.6	7.1	8.0	9.8	10	0	0.0	5.8	0	0	0	0	0	1018.0	0.0	4.6	0.6		
14	4	18	02	02	95	-1.4	85	3.0	-2.7	-6.5	2.1	2.3	4.2	6.2	7.2	9.6	40	0	tr	1.5	0	0	0	0	0	1023.0	0.0	11.7	0.1		
15	8	13	09	02	97	2.5	67	6.9	-1.4	-5.0	2.7	2.7	4.1	5.7	6.6	9.4	10	0	13.5	0.0	0	0	0	0	0	1017.5	7.2	0.0	0.4		
16	0	22	02	02	97	0.2	88	7.9	0.2	-3.6	2.5	2.5	4.4	5.7	6.5	9.0	10	0	4.6	0.0	0	0	0	0	0	1007.5	2.5	0.0	0.1		
17	0	27	02	02	96	2.0	88	10.4	0.2	-3.4	2.7	3.0	4.8	5.9	6.3	8.7	10	0	0.1	3.9	0	0	0	0	0	1017.0	0.1	0.0	0.4		
18	7	18	09	02	97	10.1	75	10.1	2.0	-2.5	6.6	6.1	6.1	6.0	6.3	8.5	10	0	16.3	0.0	0	0	0	0	0	1011.5	8.8	0.0	0.7		
19	8	18	02	25	97	7.1	91	8.7	4.7	-0.4	6.2	6.1	6.4	6.7	6.6	8.4	20	0	0.8	3.2	0	0	0	0	0	1005.0	0.7	0.0	0.4		
20	1	22	02	02	97	6.1	89	12.7	5.4	0.8	4.8	4.6	5.8	6.6	6.8	8.4	20	0	8.9	3.6	0	0	0	0	0	1007.0	4.6	0.0	0.7		
21	8	22	09	02	97	11.9	81	12.7	6.1	2.8	8.4	8.4	7.2	7.1	6.9	8.4	20	0	0.5	1.4	0	0	0	0	0	998.0	0.3	0.0	1.3		
22	5	27	02	02	97	8.1	86	11.3	8.0	2.6	6.7	6.7	7.5	7.6	7.4	8.5	10	0	4.2	3.8	0	0	0	0	0	1014.5	5.6	0.0	0.7		
23	8	13	02	61	96	8.7	94	12.6	4.7	0.4	7.0	6.6	6.8	7.3	7.5	8.6	20	0	3.4	0.0	0	0	0	0	0	1015.0	3.4	0.0	0.2		
24	8	05	02	02	96	5.0	92	6.2	5.0	3.2	6.5	6.5	7.4	7.8	7.6	8.7	10	0	0.0	1.7	0	0	0	0	0	1031.5	0.0	1.1	0.3		
25	8	13	02	10	94	4.3	94	7.7	-0.6	-3.2	5.0	4.9	5.7	6.9	7.3	8.7	10	0	0.5	0.0	0	0	0	0	0	1034.5	1.0	1.6	0.3		
26	7	00	00	10	94	7.4	94	9.3	4.3	4.5	7.1	6.7	7.0	7.1	7.1	8.6	10	0	0.0	0.1	0	0	0	0	0	1031.5	0.0	0.0	0.0		
27	7	00	00	41	09	1.9	90	6.5	1.9	0.2	4.9	5.0	6.4	7.2	7.3	8.5	10	0	0.0	1.1	0	0	0	0	1	1027.0	0.0	0.0	0.2		
28	8	27	02	05	94	6.5	94	9.7	1.9	-1.0	6.1	5.7	6.3	6.9	7.0	8.6	10	0	tr	1.2	0	0	0	0	0	1030.0	0.0	0.0	0.3		
29	8	27	02	02	96	9.7	85	12.5	6.5	5.0	7.4	7.2	7.8	7.4	7.2	8.5	10	0	tr	0.0	0	0	0	0	0	1031.5	0.0	0.0	0.5		
30	8	22	02	02	94	9.3	94	10.0	5.7	1.0	7.7	7.3	7.4	7.5	7.5	8.5	10	0	0.0	0.0	0	0	0	0	0	1035.0	0.0	0.0	0.2		
31	8	27	02	02	97	8.7	84	9.9	8.7	7.6	8.2	8.0	8.0	8.1	7.7	8.6	10	0	0.0	0.0	0	0	0	0	0	1036.0	0.0	0.0	0.8		
Monthly means						6.8	86	9.9	4.2	1.1	6.4	6.3	7.0	7.6	7.8	9.2												1017.1			
Monthly totals																					78.2	43.5						61.5	21.2	17.5	
Highest values						13.4		14.6	11.3	10.0	10.7	10.6	10.2	9.7	9.4	10.1			16.3	5.8								9.5	11.7	1.6	
Lowest values						-1.4	67	3.0	-2.7	-6.5	2.1	2.3	4.1	5.7	6.3	8.4															
1981-2010 monthly climatological averages						91	7.9	2.3	-0.1	4.6	4.7	5.5	6.3	6.6	8.2			64.6	47.1									1016.0	56.8	67.0	20.2

Key

DD: date

07GMT observations

- | | | | |
|----|--|----|-----------------------------|
| N | cloud cover (oktas, 9=obsured) | dd | wind direction (degrees/10) |
| ff | wind speed (knots) | | |
| ww | present weather code | | |
| 1 | cloud decreasing | 41 | fog patches |
| 2 | sky not changing | 45 | fog |
| 3 | cloud increasing | 50 | intermittent slight drizzle |
| 10 | mist | 60 | intermittent slight rain |
| 21 | recent rain | 61 | continuous slight rain |
| VV | visibility (00-50 metres/100, 94 very poor, 95 poor, 96 moderate, 97 good) | | |
- Soil temperatures are for 0700GMT beneath bare soil (5, 10, 20cm) or grass (30, 50, 100cm)

09GMT observations

- | | | | |
|-------|---|----|-----------------------|
| Temp | temperature (degC) | RH | relative humidity (%) |
| E | state of ground (10 moist, 20 wet, 40 frozen, X1-X7 snow) | SS | snow depth (cm) |
| Press | air pressure (mb) | | |

24 hour readings

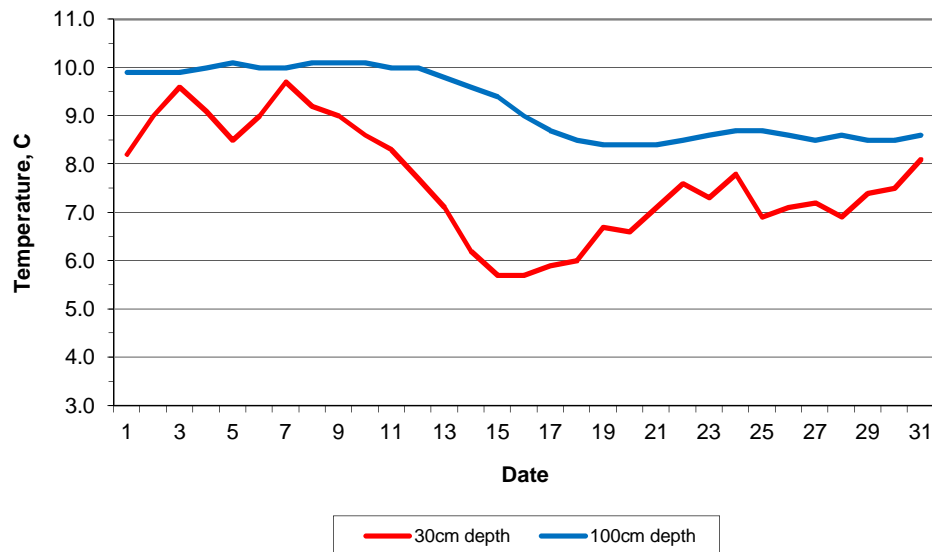
- | | | | |
|---------|---|----------|---|
| Max | maximum temperature (degC) beginning 09GMT | Min | minimum temperature (degC) ending 09GMT |
| Gmin | grass minimum temperature (degC) ending 09GMT | Rain | precipitation beginning 09GMT |
| Sun | sunshine (hours) sunrise-sunset | Rain hrs | hours of rainfall (>0.1mm/h) 09-09GMT |
| Fr. Hrs | hours of air frost (00-24GMT) | Pch Evap | Piche evaporation (ml) beginning 09GMT |

Days with

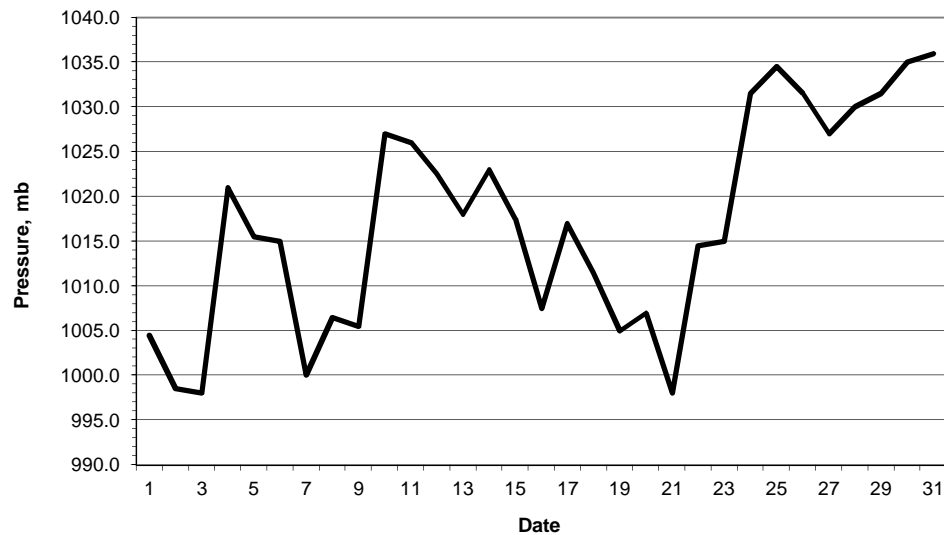
- | | | | | | |
|---|-----------------------------|---|-------------------------|---|---------------------|
| S | snow(5) or sleet(1) falling | L | 50% snow cover at 09GMT | H | hail or ice pellets |
| T | thunder heard | G | gale | F | fog at 09GMT |

This information (and data for earlier months) is also available at <http://www.met.rdg.ac.uk/~brugge>

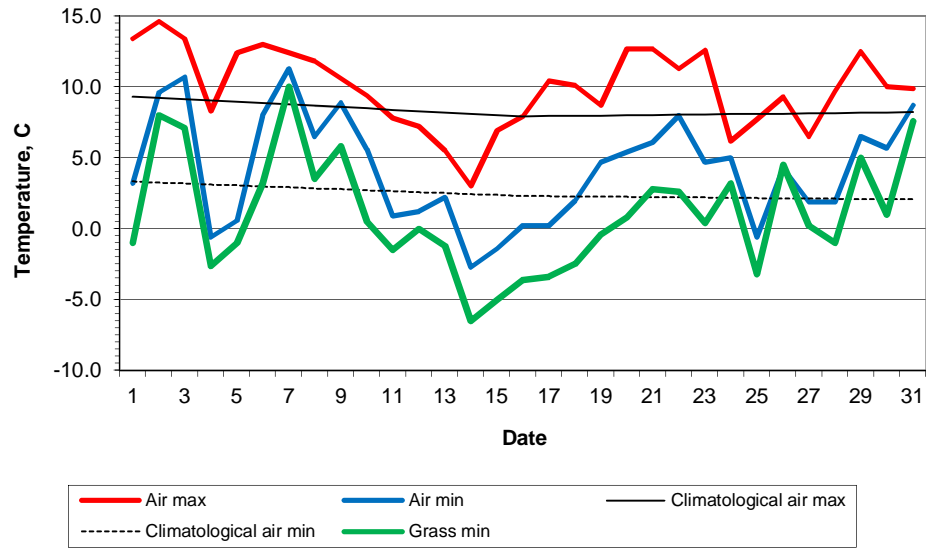
Daily soil temperatures, 0700GMT



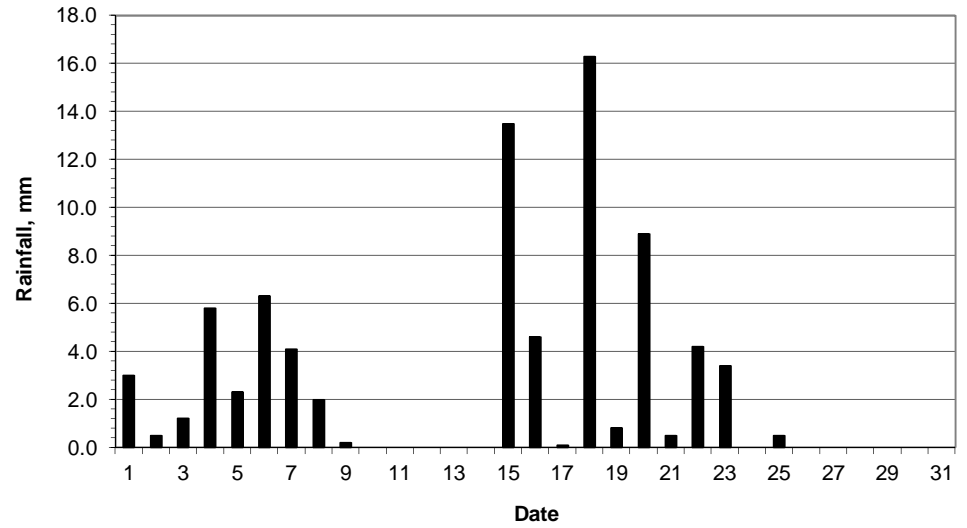
Mean sea level pressure, 0900GMT



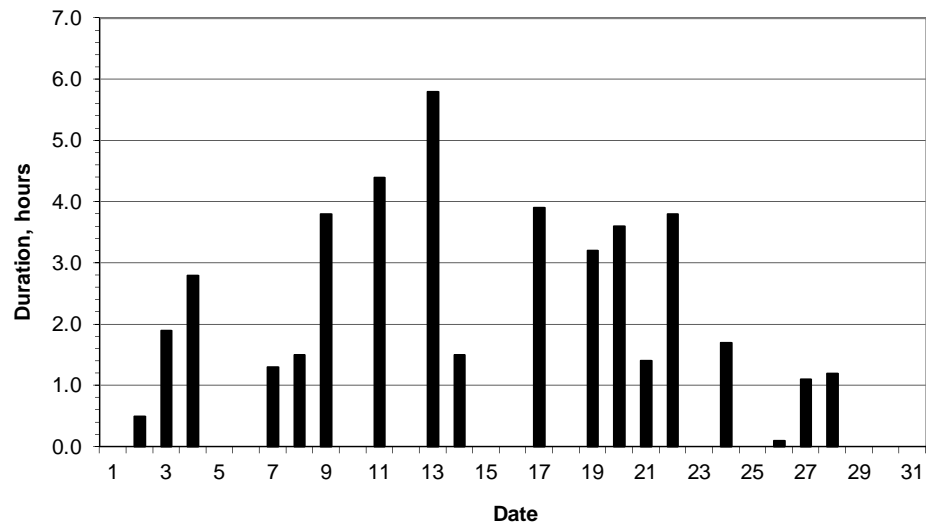
Daily temperature extremes



Daily rainfall



Daily sunshine



Daily evaporation

