

MAIDENHEAD METEOROLOGICAL OBSERVATIONS FOR DECEMBER 2016

DD	N	dd	ff	ww	VV	0900GMT		Temperature			Soil temperatures (depth in cm)						E	SS	Rain	Sun	S	L	H	T	G	F	Press	Rain hrs	Fr. hrs	Pch Evap			
						Temp	RH	Max	Min	Gmin	5	10	20	30	50	100																	
01	1	00	00	02	97	-3.5	80	6.9	-5.8	-7.7	0.1	0.9	2.7	5.0	6.1	9.1	40	0	0.0	7.4	0	0	0	0	0	0	1032.0	0.0	11.7	0.7	Number of days with 2016 normal Snow/sleet falling 0 2.1 50% snow cover 09GMT 0 1.5 Hail or ice pellets 0 0.4 Thunder 0 0.2 Gale 0 0.1 Fog at 09GMT 6 2.1 Air frost 9 9.3 Ground frost 18 16.7 0.2mm precipitation 11 14.7 1.0mm precipitation 4 10.9 5.0mm precipitation 1 4.7 No sunshine 15 13.7 Persistent high pressure led to some frost days early and late on the month, frequent fog and a dry month - the driest December since 1991. It was the foggiest December at 0900 GMT since 1972 while the air pressure was the highest overall in December since 1991. No snow or sleet fell.		
02	8	00	00	02	94	4.2	89	7.7	-3.5	-6.0	2.4	2.2	3.0	4.7	5.6	8.8	10	0	0.5	0.0	0	0	0	0	0	1027.5	3.0	0.0	0.2				
03	7	00	00	02	96	5.1	81	8.3	4.2	-1.2	4.4	4.3	4.8	5.5	5.8	8.5	10	0	0.0	2.6	0	0	0	0	0	1025.5	0.0	0.0	0.9				
04	0	09	05	02	97	0.7	82	7.5	0.7	-5.0	1.6	1.9	3.1	5.3	6.0	8.4	40	0	0.0	5.1	0	0	0	0	0	1024.5	0.0	0.3	0.8				
05	4	04	02	03	97	-2.1	81	7.3	-2.3	-5.9	0.9	1.4	3.0	5.0	5.7	8.3	40	0	0.0	3.7	0	0	0	0	0	1024.0	0.0	9.8	1.1				
06	9	00	00	45	03	5.0	99	10.6	-2.1	-4.7	3.7	3.3	3.0	4.8	5.4	8.1	10	0	0.2	0.0	0	0	0	0	1	1027.5	0.2	0.0	0.6				
07	8	00	00	02	95	10.6	91	12.9	5.0	3.9	6.9	6.1	5.7	5.6	5.7	8.0	10	0	tr	0.1	0	0	0	0	0	1026.5	0.0	0.0	0.6				
08	8	22	05	02	96	11.8	84	13.0	8.8	2.5	7.8	7.2	6.8	6.6	6.3	8.0	10	0	0.2	0.0	0	0	0	0	0	1025.0	0.1	0.0	0.3				
09	7	22	02	02	96	12.0	88	14.3	11.8	7.1	9.2	8.9	8.4	7.6	7.0	8.1	10	0	tr	2.0	0	0	0	0	0	1025.5	0.0	0.0	0.5				
10	8	27	02	02	96	12.0	89	12.8	10.8	5.2	9.6	9.1	8.9	8.2	7.7	8.4	10	0	5.8	0.0	0	0	0	0	0	1022.0	5.0	0.0	0.5				
11	5	00	00	02	97	3.6	94	9.2	2.9	-1.3	5.2	5.7	7.2	8.3	8.1	8.6	10	0	0.1	3.9	0	0	0	0	0	1025.0	0.1	0.0	0.4				
12	8	13	02	02	95	5.2	94	10.8	3.6	-1.3	5.8	5.7	6.9	7.6	7.7	8.8	10	0	3.0	0.0	0	0	0	0	0	1023.0	5.9	0.0	0.5				
13	8	00	00	02	95	8.6	94	12.7	5.2	2.0	6.7	6.6	7.1	7.8	7.7	8.8	10	0	0.2	0.1	0	0	0	0	0	1019.5	0.2	0.0	0.4				
14	9	00	00	45	02	8.4	99	12.5	8.4	3.1	8.3	8.3	8.0	8.3	8.0	8.8	10	0	tr	4.0	0	0	0	0	1	1019.5	0.0	0.0	1.3				
15	8	13	02	02	95	8.5	93	10.7	3.0	-0.8	7.2	7.1	7.2	8.0	8.0	8.9	10	0	0.0	0.0	0	0	0	0	0	1019.5	0.0	0.0	0.3				
16	8	00	00	10	94	9.2	91	10.3	7.9	1.9	8.1	7.8	8.0	8.1	8.0	9.0	10	0	tr	0.0	0	0	0	0	0	1022.5	0.0	0.0	0.2				
17	9	00	00	45	02	5.7	99	7.5	4.1	0.0	7.0	7.0	7.6	8.1	8.1	9.0	10	0	0.1	0.0	0	0	0	0	1	1037.5	0.0	0.0	0.0				
18	8	00	00	41	08	6.7	98	7.5	5.7	5.3	7.3	7.3	7.2	8.1	8.1	9.0	10	0	0.0	0.0	0	0	0	0	1	1037.5	0.0	0.0	0.1				
19	8	00	00	02	95	4.3	94	6.4	3.6	0.1	6.1	6.3	7.4	8.0	8.0	9.0	10	0	0.9	0.0	0	0	0	0	0	1028.0	1.9	0.0	0.0				
20	7	09	05	02	96	4.6	87	10.1	4.3	2.0	6.1	6.2	7.2	7.8	7.9	9.0	10	0	tr	2.8	0	0	0	0	0	1022.0	0.0	0.0	0.8				
21	8	22	02	02	96	10.1	86	11.1	2.8	-1.7	7.1	6.6	6.8	7.4	7.8	8.9	10	0	0.7	0.0	0	0	0	0	0	1018.5	0.9	0.0	0.1				
22	2	27	02	28	94	2.3	98	8.9	2.2	-1.6	5.3	6.3	6.8	7.5	7.5	8.9	10	0	tr	2.8	0	0	0	0	0	1027.0	0.0	0.0	0.9				
23	8	18	05	02	96	8.1	97	11.2	1.9	-1.6	4.7	4.4	5.6	7.0	7.4	8.8	10	0	1.0	0.0	0	0	0	0	0	1028.0	1.2	0.0	0.5				
24	8	22	02	02	97	5.4	91	10.8	3.9	-1.0	4.5	4.8	6.0	7.0	7.3	8.7	10	0	0.0	0.0	0	0	0	0	0	1026.0	0.0	0.0	1.4				
25	8	22	02	02	97	10.8	94	12.4	5.4	2.7	8.0	7.4	7.4	7.4	7.3	8.7	10	0	1.2	0.1	0	0	0	0	0	1023.5	2.3	0.0	0.8				
26	6	27	02	02	97	6.9	85	8.3	5.8	1.0	6.6	6.8	7.4	8.0	7.7	8.6	10	0	0.0	5.3	0	0	0	0	0	1029.5	0.0	0.1	0.7				
27	2	00	00	02	97	-2.0	92	4.4	-2.3	-5.0	2.0	2.4	5.0	7.0	7.5	8.7	40	0	0.0	3.8	0	0	0	0	0	1043.5	0.0	15.5	0.3				
28	2	00	00	10	94	-2.8	99	5.8	-3.1	-5.3	1.1	1.8	3.7	6.0	6.9	8.6	40	0	0.0	4.5	0	0	0	0	0	1043.0	0.0	14.9	0.5				
29	1	00	00	10	95	-3.4	83	4.8	-3.4	-5.7	0.6	1.4	3.0	5.3	6.1	8.5	40	0	tr	5.3	0	0	0	0	0	1038.0	0.0	14.8	0.8				
30	9	00	00	45	01	-0.8	100	4.2	-3.4	-6.1	1.4	1.6	2.8	4.6	5.5	8.1	40	0	0.1	0.0	0	0	0	0	1	1037.5	0.0	9.5	0.0				
31	9	00	00	45	03	4.2	99	7.8	-0.8	-0.9	3.3	3.6	4.0	4.9	5.2	7.9	10	0	0.4	0.0	0	0	0	0	1	1033.0	0.5	0.0	0.5				
Monthly means						5.1	91	9.3	2.8	-0.8	5.1	5.2	5.9	6.8	7.0	8.6											1027.8						
Monthly totals																					14.4	53.5						21.3	76.6	16.7			
Highest values						12.0		14.3	11.8	7.1	9.6	9.1	8.9	8.3	8.1	9.1				5.8	7.4							5.9	15.5	1.4			
Lowest values						-3.5	80	4.2	-5.8	-7.7	0.1	0.9	2.7	4.6	5.2	7.9																	
1981-2010 monthly climatological averages							91	7.9	2.3	-0.1	4.6	4.7	5.5	6.3	6.6	8.2				64.6	47.1							1016.0	56.8	67.0	20.2		

Key

DD: date

07GMT observations

N	cloud cover (oktas, 9=obsured)	dd	wind direction (degrees/10)
ff	wind speed (knots)		
ww	present weather code		
1	cloud decreasing	41	fog patches
2	sky not changing	45	fog
3	cloud increasing	50	intermittent slight drizzle
10	mist	60	intermittent slight rain
21	recent rain	61	continuous slight rain
VV	visibility (00-50 metres/100, 94 very poor, 95 poor, 96 moderate, 97 good)		

Soil temperatures are for 0700GMT beneath bare soil (5, 10, 20cm) or grass (30, 50, 100cm)

09GMT observations

Temp	temperature (degC)	RH	relative humidity (%)
E	state of ground (10 moist, 20 wet, 40 frozen, X1-X7 snow)	SS	snow depth (cm)
Press	air pressure (mb)		

24 hour readings

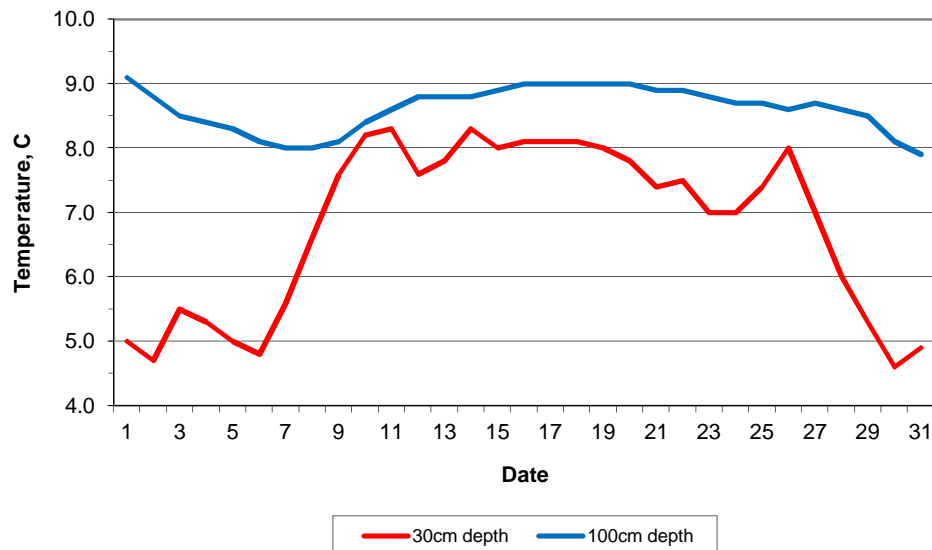
Max	maximum temperature (degC) beginning 09GMT	Min	minimum temperature (degC) ending 09GMT
Gmin	grass minimum temperature (degC) ending 09GMT	Rain	precipitation beginning 09GMT
Sun	sunshine (hours) sunrise-sunset	Rain hrs	hours of rainfall (>0.1mm/h) 09-09GMT
Fr. Hrs	hours of air frost (00-24GMT)	Pch Evap	Piche evaporation (ml) beginning 09GMT

Days with

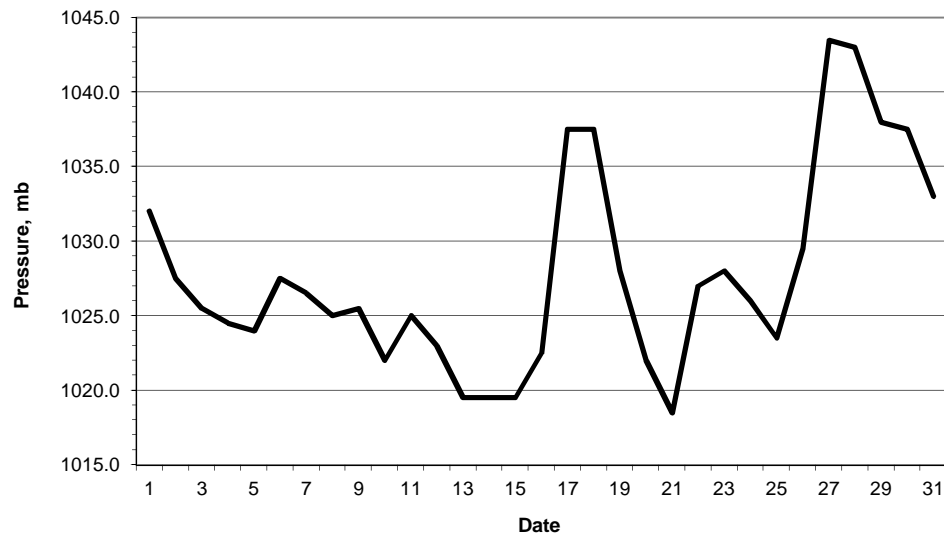
S	snow(5) or sleet(1) falling	L	50% snow cover at 09GMT	H	hail or ice pellets
T	thunder heard	G	gale	F	fog at 09GMT

This information (and data for earlier months) is also available at <http://www.met.rdg.ac.uk/~brugge>

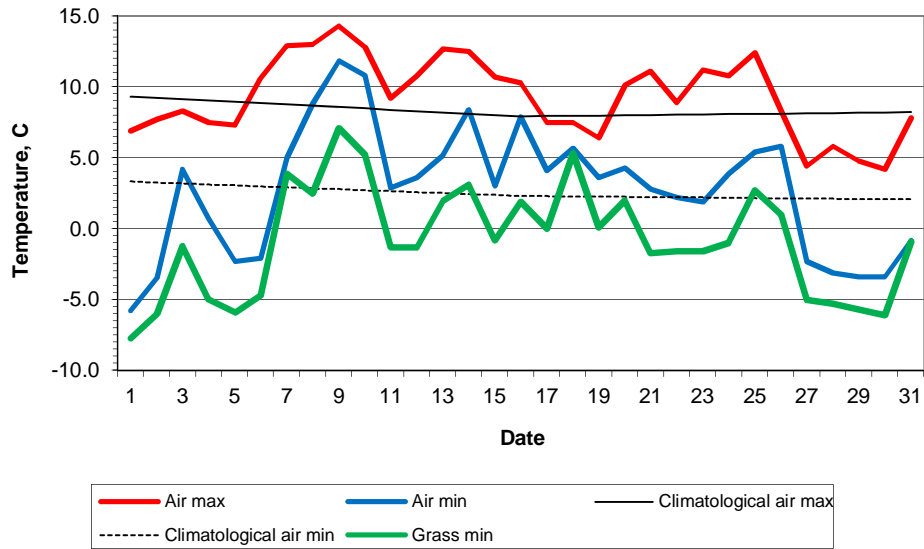
Daily soil temperatures, 0700GMT



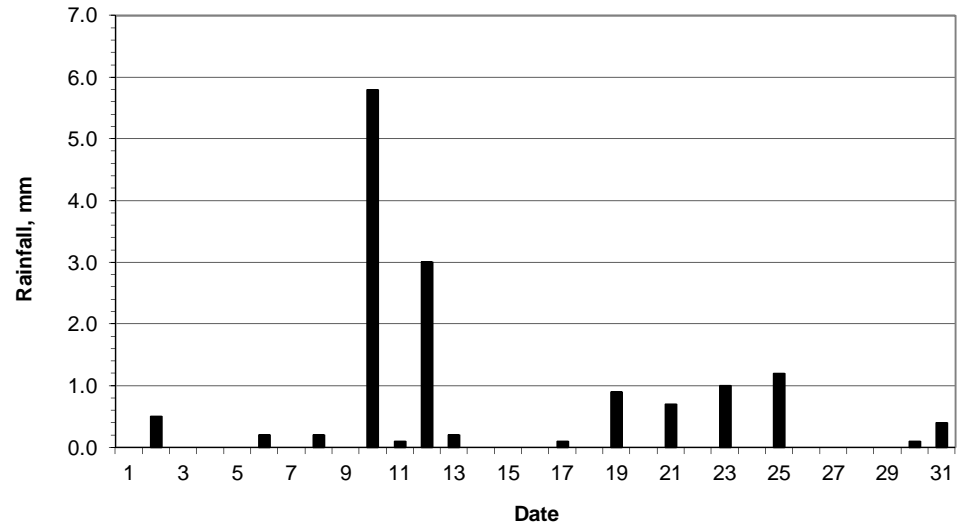
Mean sea level pressure, 0900GMT



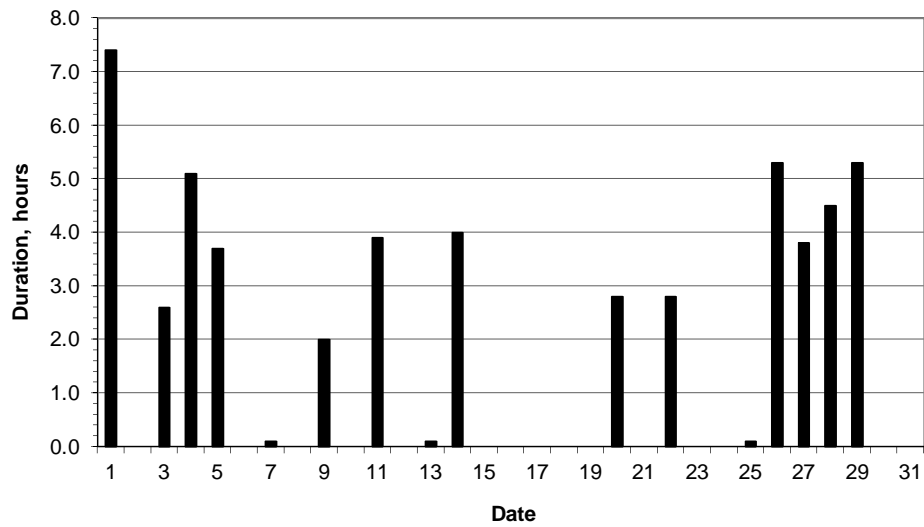
Daily temperature extremes



Daily rainfall



Daily sunshine



Daily evaporation

