

MAIDENHEAD METEOROLOGICAL OBSERVATIONS FOR DECEMBER 2014

DD	N	dd	ff	ww	VV	0900GMT		Temperature			Soil temperatures (depth in cm)						E	SS	Rain	Sun	S	L	H	T	G	F	Press	Rain hrs	Fr. hrs	Pch Evap			
						Temp	RH	Max	Min	Gmin	5	10	20	30	50	100																	
01	8	04	05	02	97	7.5	81	7.8	7.5	6.4	7.8	8.1	8.8	9.3	9.6	10.6	10	0	0.6	0.0	0	0	0	0	0	0	1015.0	1.2	0.0	0.5	Number of days with 2014 normal Snow/sleet falling 0 2.1 50% snow cover 09GMT 0 1.5 Hail or ice pellets 0 0.4 Thunder 0 0.2 Gale 0 0.1 Fog at 09GMT 0 2.1 Air frost 14 9.3 Ground frost 20 16.7 0.2mm precipitation 12 14.7 1.0mm precipitation 6 10.9 5.0mm precipitation 3 4.7 No sunshine 8 13.7 Despite a cold snap at the end of the month, which brought the lowest air temperature and the only instance of a below 0C reading of the 5 cm soil thermometer of the year, December was th eleventh warmer-than-average month of 2014. It was slightly drier than normal and very sunny - in fact, sunnier than in November.		
02	8	31	02	58	95	7.5	92	7.8	6.3	5.9	7.7	7.4	8.3	9.0	9.4	10.6	10	0	0.1	0.0	0	0	0	0	0	1018.0	0.2	0.0	1.4				
03	0	36	09	02	97	3.8	85	8.2	3.7	0.6	5.1	5.4	7.0	8.6	9.3	10.6	10	0	0.1	3.8	0	0	0	0	0	1025.0	0.2	0.0	1.2				
04	8	09	05	02	97	4.7	77	4.7	3.8	1.1	5.7	5.9	7.0	8.1	8.7	10.4	10	0	0.8	0.0	0	0	0	0	0	1017.0	4.0	0.0	0.2				
05	1	31	02	02	96	1.8	88	6.5	1.8	-0.8	5.4	5.5	6.8	7.9	8.5	10.3	10	0	tr	1.6	0	0	0	0	0	1020.0	0.0	0.0	0.4				
06	0	00	00	02	96	-2.5	98	8.9	-3.3	-5.8	2.1	2.8	5.0	7.1	8.2	10.1	40	0	0.4	4.6	0	0	0	0	0	1029.5	0.3	8.2	1.1				
07	7	27	05	02	97	8.9	93	10.0	-2.5	-4.8	6.0	5.4	5.5	6.5	7.4	9.9	10	0	0.7	1.9	0	0	0	0	0	1017.5	0.4	0.5	0.6				
08	5	22	02	02	97	2.1	86	6.4	-1.3	-4.5	2.9	3.4	4.9	6.5	7.3	9.6	10	0	0.0	5.2	0	0	0	0	0	1019.5	0.0	3.2	0.5				
09	5	27	02	02	96	-0.8	87	11.6	-2.0	-4.6	1.7	2.2	4.0	6.1	7.1	9.5	40	0	1.5	0.0	0	0	0	0	0	1029.5	1.7	6.0	1.9				
10	2	27	05	02	97	5.6	74	8.5	-0.8	-3.4	4.9	5.4	6.2	6.5	7.1	9.2	10	0	0.0	5.9	0	0	0	0	0	1018.0	0.0	0.0	1.1				
11	6	27	05	02	97	6.3	78	10.1	4.8	0.1	3.9	4.4	5.1	6.4	7.2	9.1	10	0	12.3	0.5	0	0	0	0	0	1010.5	8.7	0.0	1.3				
12	5	27	13	21	97	8.2	89	8.2	6.3	3.2	7.2	6.7	6.7	6.7	7.2	9.0	20	0	0.0	0.0	0	0	0	0	0	994.0	0.0	0.0	0.4				
13	1	00	00	02	97	-2.1	82	6.0	-2.2	-5.0	2.1	2.7	4.8	6.6	7.2	8.9	40	0	0.0	6.1	0	0	0	0	0	1011.5	0.0	12.5	0.7				
14	7	22	02	02	97	-0.2	96	9.1	-3.4	-6.0	1.6	1.8	3.5	5.5	6.7	8.8	40	0	1.0	1.2	0	0	0	0	0	1014.5	1.5	9.4	1.6				
15	1	27	02	02	97	3.5	89	7.6	-0.3	-0.6	4.4	4.8	5.6	6.0	6.5	8.7	10	0	0.0	3.1	0	0	0	0	0	1014.0	0.0	0.0	0.7				
16	0	27	09	01	96	0.5	89	10.7	-0.5	-3.9	2.1	2.7	4.2	5.9	6.5	8.5	40	0	13.4	5.5	0	0	0	0	0	1016.5	6.2	3.3	0.5				
17	8	27	05	02	97	10.7	94	12.9	0.5	-2.7	7.2	6.2	5.8	5.8	6.4	8.4	20	0	0.8	0.3	0	0	0	0	0	1006.0	2.1	0.0	0.6				
18	8	27	09	02	97	12.8	85	13.5	10.7	9.2	9.4	8.6	8.0	7.0	6.9	8.3	10	0	2.4	0.0	0	0	0	0	0	1011.0	4.8	0.0	1.0				
19	3	31	09	01	97	8.5	86	9.3	8.5	6.4	9.2	9.3	9.0	8.1	7.6	8.5	10	0	0.0	5.3	0	0	0	0	0	1014.5	0.0	0.0	1.2				
20	6	27	05	03	97	7.6	77	9.2	3.0	-1.5	5.5	5.6	6.4	7.6	7.7	8.6	10	0	0.1	5.0	0	0	0	0	0	1025.5	0.2	0.0	1.1				
21	8	22	09	02	97	7.6	93	13.1	2.6	-1.9	6.2	5.9	6.2	7.0	7.4	8.7	10	0	tr	0.1	0	0	0	0	0	1028.5	0.0	0.0	0.9				
22	8	27	13	02	97	12.9	73	13.1	7.6	6.3	9.5	8.8	8.3	7.6	7.6	8.6	10	0	0.0	0.0	0	0	0	0	0	1018.0	0.0	0.0	2.0				
23	8	27	09	02	97	11.7	73	12.5	10.7	1.4	8.8	8.4	8.5	8.4	8.0	8.8	10	0	0.5	0.4	0	0	0	0	0	1018.0	0.7	0.0	0.6				
24	7	31	09	02	97	8.8	84	8.9	8.8	6.4	9.0	9.4	9.0	8.6	8.4	8.9	10	0	0.0	1.3	0	0	0	0	0	1016.0	0.0	0.0	1.9				
25	0	27	02	02	97	3.5	93	7.8	1.7	-2.0	3.9	4.6	6.3	7.9	8.2	9.0	10	0	0.0	5.3	0	0	0	0	0	1028.5	0.0	0.0	0.6				
26	8	27	02	02	95	0.0	96	8.6	-0.8	-4.2	2.7	3.1	4.8	6.9	7.6	8.9	10	0	9.5	0.0	0	0	0	0	0	1030.5	9.5	6.4	1.3				
27	7	31	19	01	97	2.8	78	5.0	0.0	-0.5	3.9	4.4	5.5	6.6	7.2	8.8	10	0	0.0	3.2	0	0	0	0	0	1009.0	0.0	0.0	0.9				
28	0	04	05	02	97	2.0	84	5.5	-0.5	-5.4	1.6	2.1	3.9	6.0	6.8	8.6	40	0	0.0	6.0	0	0	0	0	0	1029.5	0.0	6.8	0.5				
29	0	27	02	02	97	-1.8	96	4.6	-3.8	-7.0	0.9	1.4	3.0	5.1	6.2	8.4	40	0	0.0	5.8	0	0	0	0	0	1040.5	0.0	15.7	1.1				
30	0	00	00	02	96	-4.8	83	2.9	-5.1	-7.7	0.1	1.1	2.5	4.4	5.5	8.1	40	0	0.0	1.5	0	0	0	0	0	1040.5	0.0	18.2	1.0				
31	6	22	02	03	96	-2.9	95	8.7	-4.9	-7.8	-0.1	0.6	2.1	3.9	5.2	7.8	40	0	0.1	3.0	0	0	0	0	0	1035.0	0.0	11.2	0.7				
Monthly means						4.3	86	8.6	1.8	-1.1	4.8	5.0	5.9	6.9	7.4	9.1												1020.0					
Monthly totals																					44.3	76.6							41.7	101.4	29.5		
Highest values																																	
Lowest values						12.9		13.5	10.7	9.2	9.5	9.4	9.0	9.3	9.6	10.6					13.4	6.1							9.5	18.2	2.0		
1981-2010 monthly climatological averages						-4.8	73	2.9	-5.1	-7.8	-0.1	0.6	2.1	3.9	5.2	7.8																	
						91	7.9	2.3	-0.1	4.6	4.7	5.5	6.3	6.6	8.2					64.6	47.1							1016.0	56.8	67.0	20.2		

Key

DD: date

07GMT observations

N	cloud cover (oktas, 9=obsured)	dd	wind direction (degrees/10)
ff	wind speed (knots)		
ww	present weather code		
1	cloud decreasing	41	fog patches
2	sky not changing	45	fog
3	cloud increasing	50	intermittent slight drizzle
10	mist	60	intermittent slight rain
21	recent rain	61	continuous slight rain
VV	visibility (00-50 metres/100, 94 very poor, 95 poor, 96 moderate, 97 good)		

Soil temperatures are for 0700GMT beneath bare soil (5, 10, 20cm) or grass (30, 50, 100cm)

09GMT observations

Temp	temperature (degC)	RH	relative humidity (%)
E	state of ground (10 moist, 20 wet, 40 frozen, X1-X7 snow)	SS	snow depth (cm)
Press	air pressure (mb)		

24 hour readings

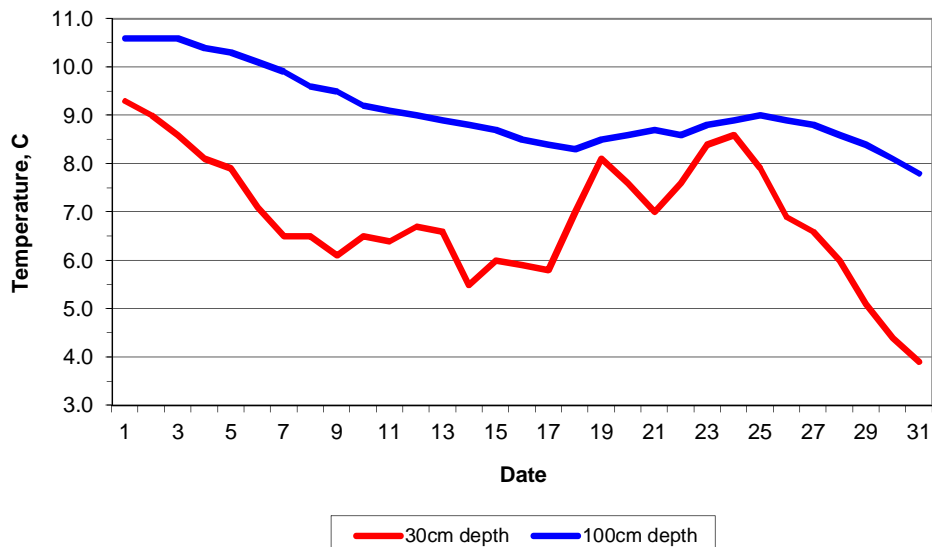
Max	maximum temperature (degC) beginning 09GMT	Min	minimum temperature (degC) ending 09GMT
Gmin	grass minimum temperature (degC) ending 09GMT	Rain	precipitation beginning 09GMT
Sun	sunshine (hours) sunrise-sunset	Rain hrs	hours of rainfall (>0.1mm/h) 09-09GMT
Fr. Hrs	hours of air frost (00-24GMT)	Pch Evap	Piche evaporation (ml) beginning 09GMT

Days with

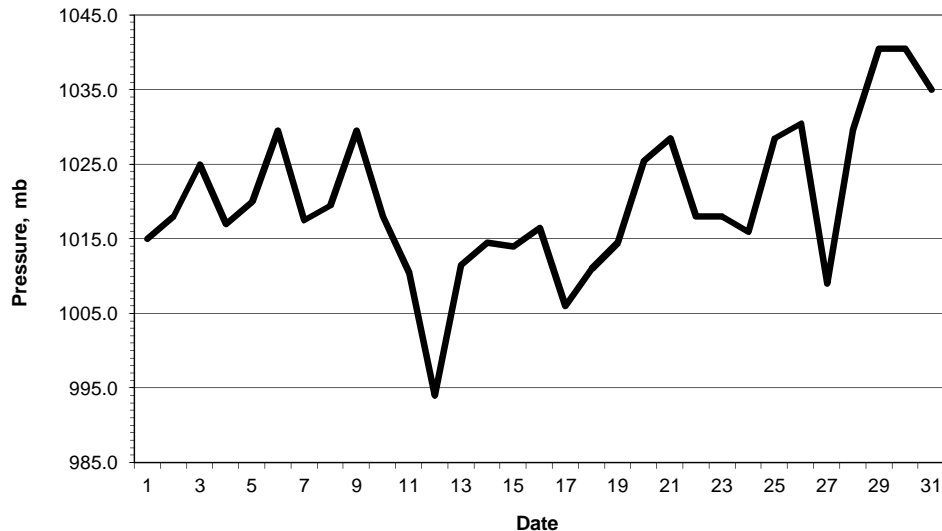
S	snow(5) or sleet(1) falling	L	50% snow cover at 09GMT	H	hail or ice pellets
T	thunder heard	G	gale	F	fog at 09GMT

This information (and data for earlier months) is also available at <http://www.met.rdg.ac.uk/~brugge>

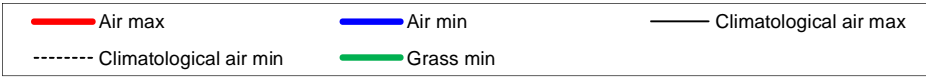
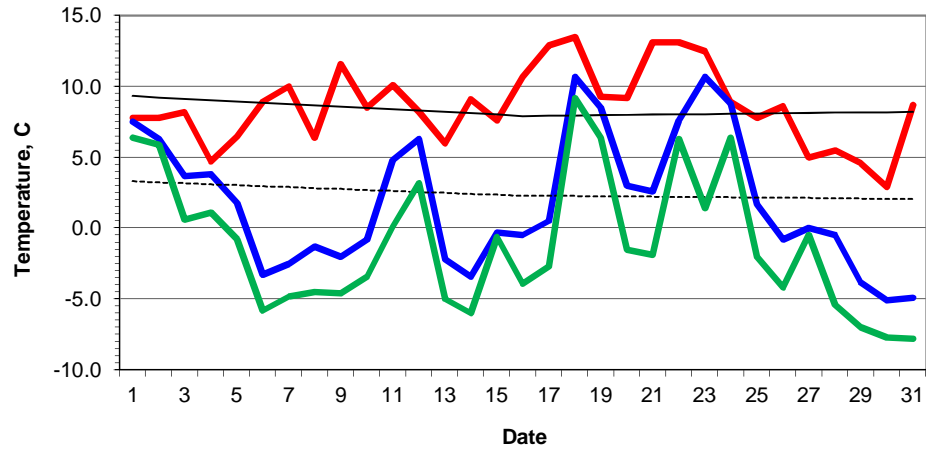
Daily soil temperatures, 0700GMT



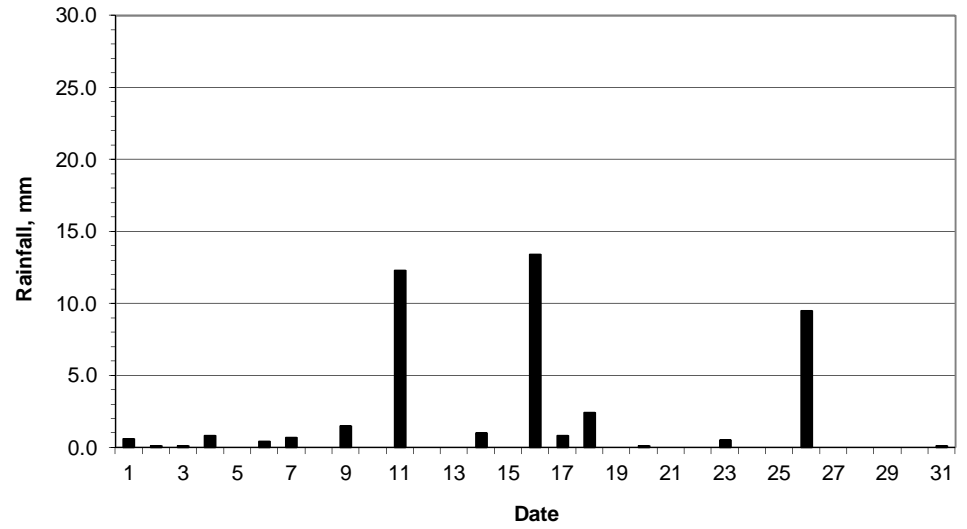
Mean sea level pressure, 0900GMT



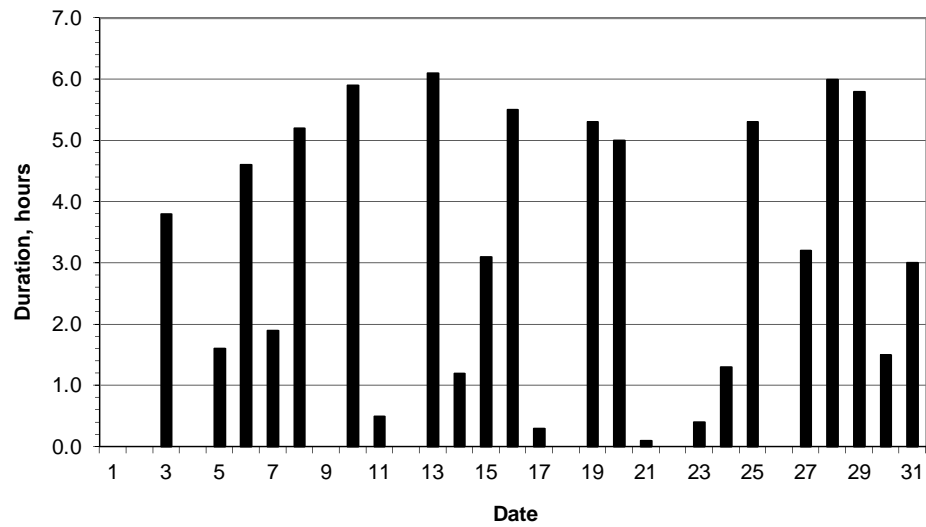
### Daily temperature extremes



### Daily rainfall



### Daily sunshine



### Daily evaporation

