

MAIDENHEAD METEOROLOGICAL OBSERVATIONS FOR DECEMBER 2013

DD	N	dd	ff	ww	VV	0900GMT				Soil temperatures (depth in cm)							E	SS	Rain	Sun	S	L	H	T	G	F	Press	Rain hrs	Fr. hrs	Pch Evap		
						Temp	RH	Max	Min	Gmin	5	10	20	30	50	100																
01	8	30	02	02	97	5.0	88	9.7	-0.4	-3.2	5.0	4.9	7.4	7.7	7.7	9.3	10	0	0.0	0.2	0	0	0	0	0	0	1033.5	0.0	8.0	0.8	Number of days with 2013 normal Snow/sleet falling 0 2.1 50% snow cover 09GMT 0 1.5 Hail or ice pellets 0 0.4 Thunder 0 0.2 Gale 0 0.1 Fog at 09GMT 2 2.1 Air frost 5 9.3 Ground frost 23 16.7 0.2mm precipitation 19 14.7 1.0mm precipitation 14 10.9 5.0mm precipitation 6 4.7 No sunshine 11 13.7 A mild (especially by day) and wet month. The first fortnight was generally dry but then the month turned wet and, at times, very windy. Air frost was less frequent than usual, but there were many mornings with a ground frost compared to the December average.	
02	8	36	02	02	97	7.5	87	9.7	6.8	-0.2	6.7	6.7	7.6	7.8	7.8	9.3	10	0	0.0	0.0	0	0	0	0	0	1036.0	0.0	0.0	0.8			
03	8	04	02	02	97	6.4	73	6.5	6.3	1.9	6.2	6.6	7.2	7.7	7.7	9.2	10	0	0.0	0.0	0	0	0	0	0	1031.0	0.0	0.0	0.6			
04	8	00	00	02	97	6.9	84	8.4	5.1	3.9	6.6	6.2	6.9	7.6	7.8	9.1	10	0	0.1	0.0	0	0	0	0	0	1028.0	0.2	1.8	0.5			
05	7	22	09	02	97	3.3	90	10.4	-1.2	-4.8	3.3	3.4	5.9	7.0	7.6	9.1	10	0	0.2	0.9	0	0	0	0	0	1023.0	0.6	6.6	2.0			
06	3	27	02	02	97	2.3	73	8.7	1.7	-2.2	3.2	4.0	5.5	6.8	7.4	9.0	10	0	0.0	5.3	0	0	0	0	0	1029.5	0.0	0.0	0.5			
07	8	27	02	02	97	6.2	91	8.7	2.3	-0.5	5.6	5.3	6.0	6.7	7.3	9.0	10	0	0.2	0.0	0	0	0	0	0	1027.5	0.5	0.0	0.5			
08	7	22	02	01	97	5.6	93	11.0	3.8	-1.0	5.7	5.6	6.2	6.9	7.2	8.8	10	0	tr	3.2	0	0	0	0	0	1025.5	0.0	0.0	1.2			
09	5	00	00	11	94	5.0	93	10.1	4.2	-0.6	5.4	5.3	6.0	7.0	7.3	8.8	10	0	0.0	4.4	0	0	0	0	0	1029.5	0.0	0.0	1.1			
10	8	00	00	02	96	2.7	90	8.9	0.6	-3.1	4.0	4.4	5.5	6.6	7.3	8.7	10	0	0.1	0.3	0	0	0	0	0	1031.0	0.0	0.0	0.2			
11	9	00	00	47	03	1.9	91	4.3	1.1	-2.4	4.2	4.6	5.5	6.5	7.1	8.6	10	0	0.1	0.0	0	0	0	0	1	1031.0	0.0	0.7	0.0			
12	8	00	00	42	09	3.9	96	10.2	-0.9	-3.9	3.9	4.1	5.0	6.2	7.1	8.6	10	0	0.1	1.5	0	0	0	0	1	1025.5	0.2	2.8	0.3			
13	8	18	05	02	97	9.9	90	12.2	3.9	1.8	6.6	6.0	6.0	6.6	7.0	8.5	10	0	0.6	0.0	0	0	0	0	0	1020.0	1.5	0.0	0.4			
14	6	00	00	02	96	1.7	88	11.2	0.9	-2.2	4.4	4.8	6.1	7.0	7.2	8.4	10	0	2.4	0.7	0	0	0	0	0	1026.5	5.0	0.0	0.8			
15	7	22	09	02	96	4.5	91	12.8	1.7	-0.5	5.8	6.1	7.0	7.3	7.2	8.4	10	0	11.9	0.0	0	0	0	0	0	1021.0	9.1	0.0	0.5			
16	8	18	13	02	97	12.3	88	13.0	4.5	2.5	9.7	9.5	8.5	8.1	7.5	8.5	10	0	11.4	0.0	0	0	0	0	0	1015.0	11.2	0.0	0.3			
17	8	13	05	02	96	4.6	93	6.2	4.6	3.4	6.7	6.7	8.0	8.5	8.2	8.6	10	0	1.6	0.1	0	0	0	0	0	1025.0	3.0	0.0	0.1			
18	2	18	02	02	96	6.4	94	10.1	3.1	-0.6	5.9	6.2	7.2	8.0	8.0	8.7	10	0	10.2	1.3	0	0	0	0	0	1012.5	4.4	0.0	0.8			
19	2	22	02	02	97	3.5	91	7.7	3.5	0.2	5.8	6.1	7.4	8.0	7.9	8.8	20	0	1.3	4.6	0	0	0	0	0	1002.5	0.9	0.0	0.3			
20	0	00	00	02	97	1.9	88	11.0	1.4	-1.9	3.3	4.1	5.6	7.2	7.7	8.8	10	0	3.8	4.0	0	0	0	0	0	1020.0	7.4	0.0	1.2			
21	8	22	13	02	97	11.1	89	11.9	1.0	-2.4	7.8	7.7	7.4	7.3	7.4	8.7	10	0	4.1	0.0	0	0	0	0	0	1014.5	3.4	0.0	1.0			
22	4	22	05	02	97	8.8	81	10.1	7.0	3.2	7.2	7.1	7.4	7.9	7.8	8.6	10	0	0.4	3.8	0	0	0	0	0	1007.5	0.6	0.0	1.2			
23	8	18	13	25	97	9.1	87	11.8	1.7	-1.8	5.4	5.3	6.0	7.3	7.7	8.7	20	0	28.0	0.0	0	0	0	0	0	1003.0	17.5	0.0	0.6			
24	8	22	09	02	97	7.9	87	8.1	7.3	4.6	7.8	7.9	8.2	8.0	7.9	8.6	20	0	4.8	0.1	0	0	0	0	0	979.5	3.0	0.0	0.8			
25	3	18	02	02	97	1.2	98	6.2	0.8	-2.4	4.1	4.5	6.1	7.5	7.8	8.6	10	0	4.0	1.6	0	0	0	0	0	984.5	1.9	0.0	0.2			
26	8	27	02	10	94	3.4	94	11.0	1.2	-1.9	4.8	4.8	5.7	6.8	7.4	8.6	10	0	3.4	0.5	0	0	0	0	0	997.0	3.1	0.0	0.9			
27	8	22	13	02	97	10.0	68	10.3	0.9	-2.1	6.2	6.2	6.5	6.8	7.2	8.5	10	0	0.0	1.5	0	0	0	0	0	986.0	0.0	0.0	1.3			
28	3	22	05	02	97	1.2	85	8.2	0.1	-3.5	3.3	3.3	5.5	6.7	7.1	8.4	10	0	0.0	4.7	0	0	0	0	0	998.0	0.0	1.8	0.5			
29	0	27	02	02	97	-0.6	88	10.1	-0.7	-5.2	1.9	2.3	3.9	5.9	6.7	8.3	40	0	0.7	6.1	0	0	0	0	0	1010.5	2.4	9.7	0.9			
30	8	18	13	60	96	10.1	92	10.1	-0.6	-3.9	6.4	5.6	5.5	5.7	6.2	8.1	10	0	6.7	1.8	0	0	0	0	0	1007.5	4.0	0.0	0.9			
31	8	18	09	02	97	9.5	92	10.8	2.0	-1.8	6.0	5.6	6.1	6.2	6.5	8.0	20	0	6.2	0.0	0	0	0	0	0	1002.0	4.2	0.0	0.3			
Monthly means						5.6	88	9.7	2.4	-1.0	5.4	5.5	6.4	7.1	7.4	8.7												1015.6				
Monthly totals																					102.3	46.6							84.1	31.4	21.5	
Highest values						12.3		13.0	7.3	4.6	9.7	9.5	8.5	8.5	8.2	9.3				28.0	6.1							17.5	9.7	2.0		
Lowest values						-0.6	68	4.3	-1.2	-5.2	1.9	2.3	3.9	5.7	6.2	8.0																
1981-2010 monthly climatological averages						91	7.9	2.3	-0.1	4.6	4.7	5.5	6.3	6.6	8.2						64.6	47.1							1016.0	56.8	67.0	20.2

Key

DD: date

07GMT observations

N	cloud cover (oktas, 9=obsured)	dd	wind direction (degrees/10)
ff	wind speed (knots)		
ww	present weather code		
1	cloud decreasing	41	fog patches
2	sky not changing	45	fog
3	cloud increasing	50	intermittent slight drizzle
10	mist	60	intermittent slight rain
21	recent rain	61	continuous slight rain
VV	visibility (00-50 metres/100, 94 very poor, 95 poor, 96 moderate, 97 good)		

Soil temperatures are for 0700GMT beneath bare soil (5, 10, 20cm) or grass (30, 50, 100cm)

09GMT observations

Temp	temperature (degC)	RH	relative humidity (%)
E	state of ground (10 moist, 20 wet, 40 frozen, X1-X7 snow)	SS	snow depth (cm)
Press	air pressure (mb)		

24 hour readings

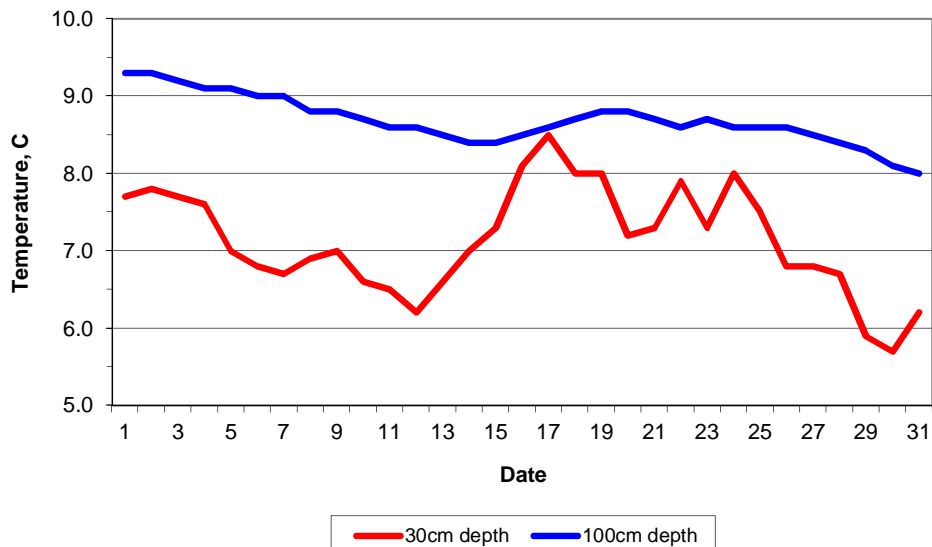
Max	maximum temperature (degC) beginning 09GMT	Min	minimum temperature (degC) ending 09GMT
Gmin	grass minimum temperature (degC) ending 09GMT	Rain	precipitation beginning 09GMT
Sun	sunshine (hours) sunrise-sunset	Rain hrs	hours of rainfall (>0.1mm/h) 09-09GMT
Fr. Hrs	hours of air frost (00-24GMT)	Pch Evap	Piche evaporation (ml) beginning 09GMT

Days with

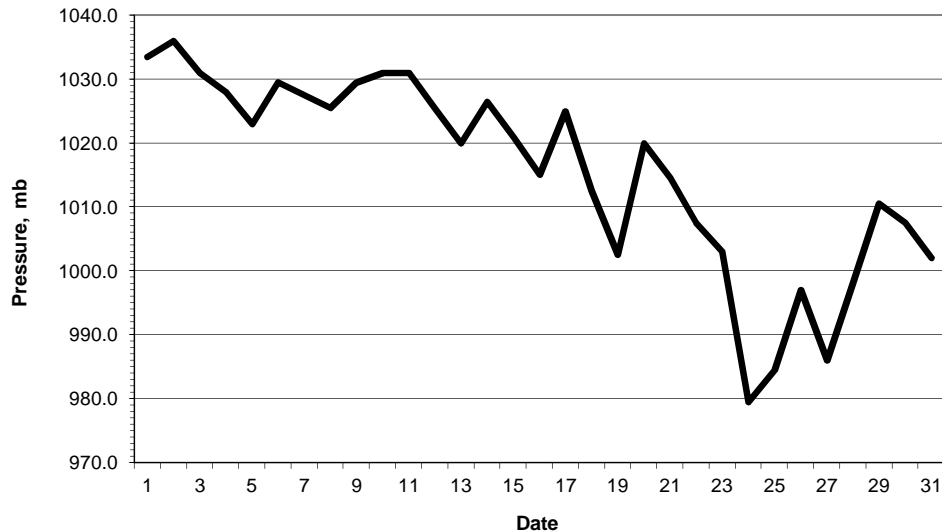
S	snow(5) or sleet(1) falling	L	50% snow cover at 09GMT	H	hail or ice pellets
T	thunder heard	G	gale	F	fog at 09GMT

This information (and data for earlier months) is also available at <http://www.met.rdg.ac.uk/~brugge>

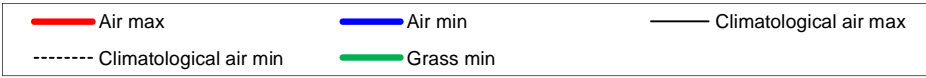
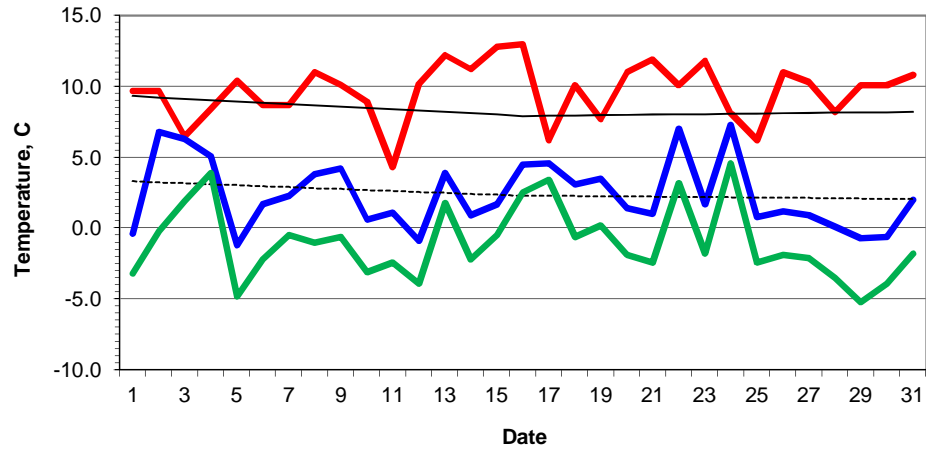
Daily soil temperatures, 0700GMT



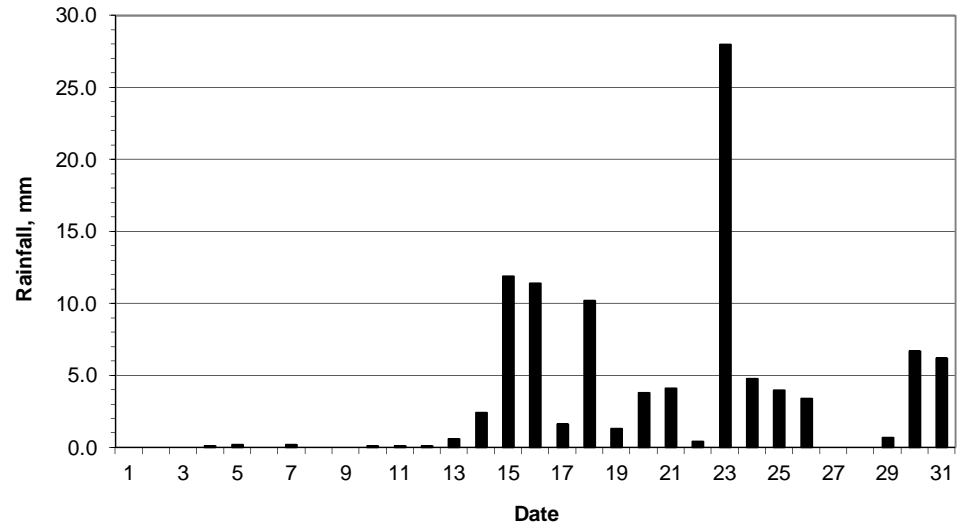
Mean sea level pressure, 0900GMT



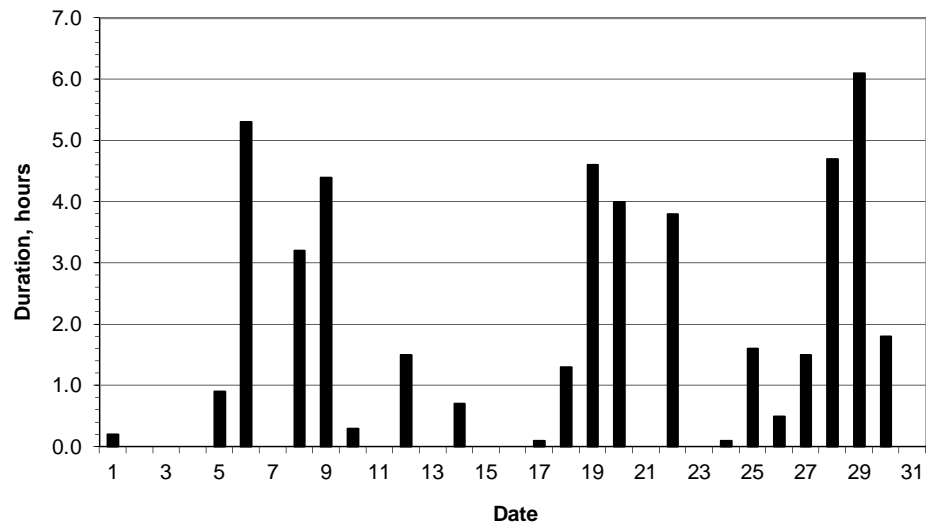
### Daily temperature extremes



### Daily rainfall



### Daily sunshine



### Daily evaporation

