

MAIDENHEAD METEOROLOGICAL OBSERVATIONS FOR DECEMBER 2007

		0900GMT					Temperature					Soil temperatures (depth in cm)																Rain	Fr.	Pch													
DD	N	dd	ff	ww	VV	Temp	RH	Max	Min	Gmin	5	10	20	30	50	100	E	SS	Rain	Sun	S	L	H	T	G	F	Press	hrs	hrs	Evap													
01	1	23	05	02	97	6.1	87	10.8	5.8	2.4	7.1	7.3	8.4	8.8	8.5	9.5	10	0	1.5	5.3	0	0	0	0	0	0	1004.5	0.6	0.0	1.0	Number of												
02	8	18	13	21	97	10.7	91	13.4	6.1	2.4	7.8	7.2	7.9	8.2	8.6	9.6	10	0	1.1	0.5	0	0	4	0	0	0	994.0	1.6	0.0	1.8	days with												
03	0	27	02	02	97	5.9	85	11.1	5.6	2.2	6.4	6.6	7.6	8.4	8.4	9.5	10	0	0.0	6.2	0	0	0	0	0	1004.5	0.0	0.0	1.1	2007 normal													
04	8	21	02	02	97	8.0	88	13.7	5.9	1.3	7.0	6.7	7.4	8.0	8.4	9.5	10	0	3.5	0.0	0	0	0	0	0	1016.0	5.0	0.0	1.1	Snow/sleet falling													
05	8	22	13	60	96	13.2	92	15.0	8.0	6.5	9.4	9.7	9.0	8.8	8.6	9.5	10	0	3.9	3.4	0	0	0	0	0	1006.0	3.2	0.0	1.2	0 1.7													
06	8	21	05	21	97	13.3	89	14.3	9.1	6.2	8.8	8.8	8.8	8.8	8.6	9.5	10	0	8.5	0.0	0	0	0	0	0	1010.5	7.2	0.0	1.1	50% snow cover 09GMT													
07	1	23	13	02	97	8.5	75	11.2	8.5	5.3	8.9	9.2	9.2	9.7	9.1	9.6	10	0	0.0	4.7	0	0	0	0	0	1001.5	0.0	0.0	1.2	0 1.0													
08	8	19	05	60	97	5.5	95	11.1	4.1	0.9	6.6	6.6	7.7	8.9	9.2	9.7	10	0	8.3	0.0	0	0	0	0	0	1008.5	7.8	0.0	1.5	Hail or ice pellets													
09	6	27	09	01	97	7.0	86	9.6	5.5	1.4	6.6	6.6	7.5	8.5	8.8	9.8	10	0	2.4	0.0	0	0	0	0	0	982.5	3.8	0.0	1.0	1 0.3													
10	8	32	13	25	97	6.0	83	6.9	5.9	4.1	6.6	6.7	7.4	8.6	8.6	9.7	10	0	0.1	1.3	0	0	0	0	0	1009.0	0.1	0.0	1.2	Thunder													
11	6	33	02	03	97	0.1	96	6.8	-1.7	-4.5	3.4	4.0	6.0	7.6	8.3	9.6	40	0	0.0	6.7	0	0	0	0	0	1032.0	0.0	3.6	0.8	0 0.2													
12	0	18	02	02	97	-1.1	96	5.0	-3.9	-5.1	2.3	3.2	5.1	6.5	7.6	9.4	40	0	0.0	7.0	0	0	0	0	0	1038.5	0.0	9.0	0.4	Gale													
13	0	19	02	02	97	-1.1	98	5.4	-3.8	-6.6	1.7	2.1	4.0	5.8	6.8	9.1	40	0	0.0	6.3	0	0	0	0	0	1041.5	0.0	9.5	0.8	0 0.2													
14	8	17	02	10	94	2.2	98	4.7	-1.1	-5.0	2.8	3.1	3.9	5.2	6.5	8.8	40	0	0.0	0.0	0	0	0	0	0	1041.5	0.0	0.0	0.5	Fog at 09GMT													
15	8	15	09	02	97	4.3	73	4.3	2.2	0.3	3.8	3.7	4.1	5.2	6.3	8.5	10	0	0.0	0.1	0	0	0	0	0	1037.0	0.0	0.0	0.9	2 1.9													
16	7	10	05	03	97	1.6	78	4.4	-2.2	-5.0	2.6	2.4	3.8	5.0	6.3	8.2	40	0	0.0	6.2	0	0	0	0	0	1039.0	0.0	1.5	0.7	Air frost													
17	8	06	09	02	97	3.2	83	5.5	0.1	-2.6	2.1	2.2	3.5	4.7	5.8	8.1	40	0	0.0	2.8	0	0	0	0	0	1037.5	0.0	5.2	1.1	10 7.9													
18	8	09	09	02	97	3.7	74	5.4	3.2	0.7	3.3	3.0	3.9	4.9	5.7	7.9	10	0	0.0	4.9	0	0	0	0	0	1038.5	0.0	0.0	1.0	Ground frost													
19	8	09	02	02	97	4.0	89	5.7	2.6	-0.1	3.1	3.0	4.0	5.0	5.5	7.8	10	0	0.0	5.8	0	0	0	0	0	1039.5	0.0	0.0	0.9	14 15.3													
20	0	12	02	02	96	-2.5	97	4.1	-4.3	-4.2	1.1	1.5	2.5	4.6	5.2	7.6	40	0	0.0	5.2	0	0	0	0	0	1038.0	0.0	9.9	0.7	0.2mm precipitation													
21	8	09	02	02	96	2.4	98	4.0	-2.5	-4.0	2.8	2.6	3.4	4.5	5.2	7.5	10	0	0.0	3.9	0	0	0	0	0	1029.5	0.0	3.0	0.3	11 15.1													
22	8	09	02	44	04	0.2	99	5.3	-1.8	-4.0	1.7	1.7	3.0	4.2	5.2	7.2	10	0	0.5	0.0	0	0	0	0	1	1025.5	0.8	8.5	0.4	1.0mm precipitation													
23	9	00	00	45	03	-1.2	98	7.4	-1.9	-3.3	1.7	1.8	3.2	4.4	5.1	7.1	40	0	0.1	0.0	0	0	0	0	0	1031.0	0.1	5.8	0.2	10 11.2													
24	7	18	05	02	96	7.4	98	10.1	-1.2	-1.9	3.3	2.9	3.5	4.3	5.1	7.0	10	0	8.3	0.0	0	0	0	0	0	1025.0	6.3	0.0	0.3	5.0mm precipitation													
25	8	19	05	60	96	9.5	99	10.1	7.4	2.8	6.6	6.0	5.6	5.4	5.1	6.9	10	0	3.2	0.0	0	0	0	0	0	1014.0	4.0	0.0	0.1	3 4.9													
26	6	18	02	02	96	1.5	98	11.0	0.4	-2.4	3.2	3.3	4.5	5.5	5.7	6.9	10	0	0.1	2.0	0	0	0	0	0	1026.0	0.1	0.0	0.6	No sunshine													
27	8	22	05	02	97	11.0	90	12.6	1.5	-0.8	6.8	6.2	5.8	5.8	5.8	7.0	10	0	tr	0.0	0	0	0	0	0	1026.0	0.0	0.0	1.2	11 14.7													
28	7	22	13	02	96	10.8	78	11.7	9.1	1.0	7.3	7.2	7.0	6.7	6.2	7.1	10	0	4.0	0.2	0	0	0	0	0	1021.5	4.7	0.0	1.3	A dry and sunny month													
29	1	27	09	02	96	5.4	82	8.9	5.1	2.5	6.0	6.1	7.0	7.1	6.7	7.2	10	0	0.0	5.7	0	0	0	0	0	1013.0	0.0	0.0	1.2	during mainly to a long spell													
30	7	23	02	02	96	6.5	90	9.2	4.7	1.0	5.7	5.5	6.3	6.8	6.9	7.5	10	0	tr	1.6	0	0	0	0	0	1027.5	0.0	0.0	0.5	of high pressure. No													
31	8	22	02	02	96	6.1	93	7.9	5.8	1.7	6.7	6.2	6.4	6.6	6.8	7.5	10	0	0.1	0.0	0	0	0	0	0	1031.0	0.1	0.0	0.4	measureable rain fell 11th-													
Monthly means						5.1	90	8.6	2.7	-0.2	4.9	4.9	5.7	6.6	6.9	8.4											1022.3																
Monthly totals																45.6	79.8											45.4	56.0	26.5	21st, but there was no												
Highest values						13.3	15.0	9.1	6.5	9.4	9.7	9.2	9.8	9.2	9.8											8.5	7.0											7.8	9.9	1.8	sleet either. 15C on the 5th		
Lowest values						-2.5	73	4.0	-4.3	-6.6	1.1	1.5	2.5	4.2	5.1	6.9																											
1971-2000 monthly climatological averages						90	8.3	2.6	0.4	4.6	4.8	5.7	6.3	6.7	8.1											65.6	40.9											1015.2	59.2	61.4	21.1	temperature for December.	

Key
 DD: date

07GMT observations

N	cloud cover (oktas, 9=obscured)	dd	wind direction (degrees/10)
ff	wind speed (knots)		
ww	present weather code		
1	cloud decreasing	41	fog patches
2	sky not changing	45	fog
3	cloud increasing	50	intermittent slight drizzle
10	mist	60	intermittent slight rain
21	recent rain	61	continuous slight rain

VV visibility (00-50 metres/100, 94 very poor, 95 poor, 96 moderate, 97 good)
 Soil temperatures are for 0700GMT beneath bare soil (5, 10, 20cm) or grass (30, 50, 100cm)

09GMT observations

Temp	temperature (degC)	RH	relative humidity (%)
E	state of ground (10 moist, 20 wet, 40 frozen, X5/X6 snow)	SS	snow depth (cm)
Press	air pressure (mb)		

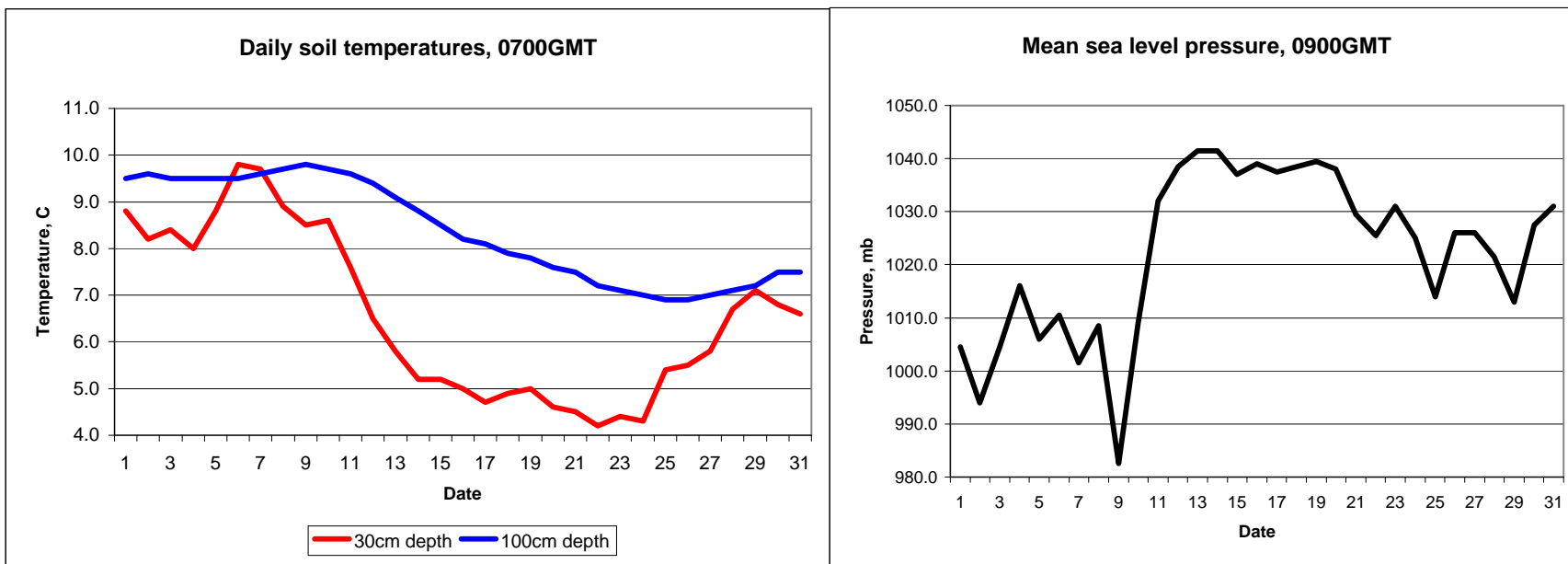
24 hour readings

Max	maximum temperature (degC) beginning 09GMT	Min	minimum temperature (degC) ending 09GMT
Gmin	grass minimum temperature (degC) ending 09GMT	Rain	precipitation beginning 09GMT
Sun	sunshine (hours) sunrise-sunset	Rain hrs	hours of rainfall (>0.1mm/h) 09-09GMT
Fr. Hrs	hours of air frost (00-24GMT)	Pch Evap	Piche evaporation (ml) beginning 09GMT

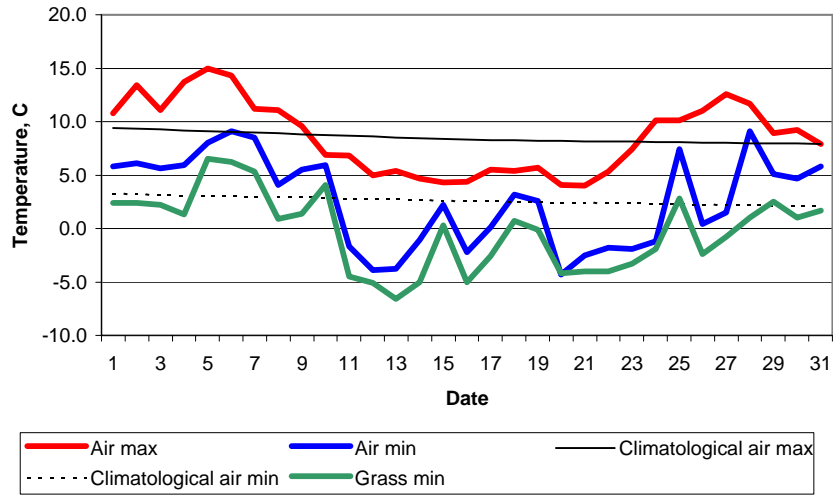
Days with

S	snow(5) or sleet(1) falling	L	50% snow cover at 09GMT	H	hail or ice pellets
T	thunder heard	G	gale	F	fog at 09GMT

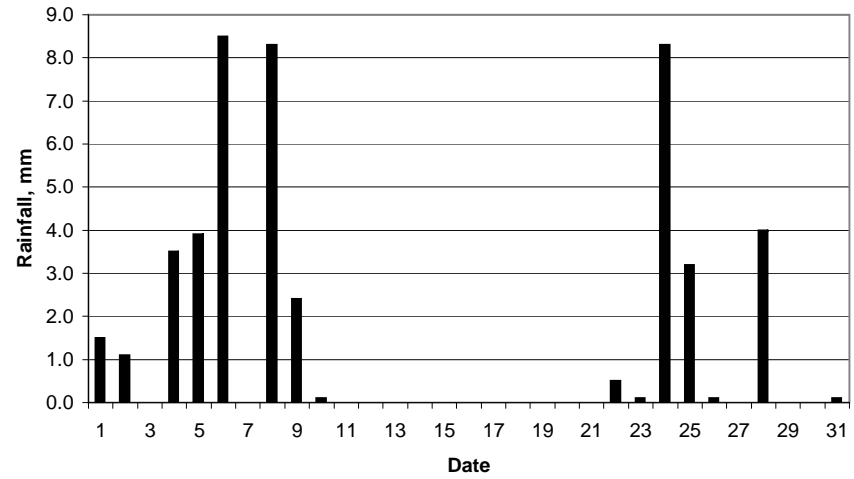
This information (and data for earlier months) is also available at <http://www.met.rdg.a.uk/~brugge>



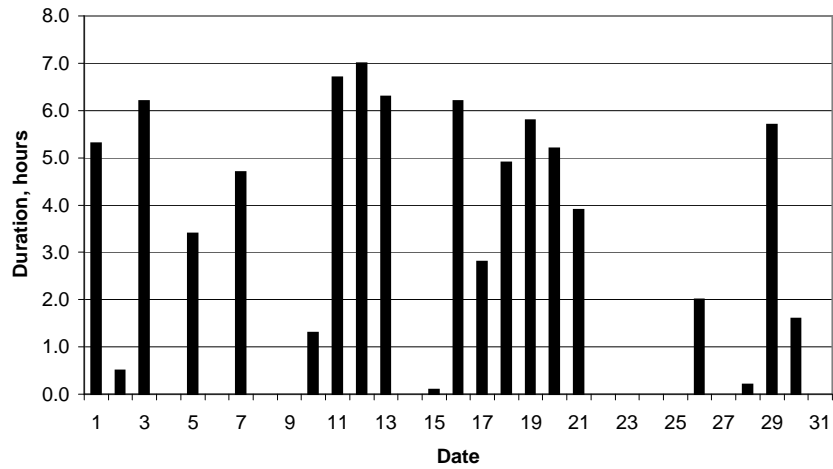
Daily temperature extremes



Daily rainfall



Daily sunshine



Daily evaporation

