

MAIDENHEAD METEOROLOGICAL OBSERVATIONS FOR DECEMBER 2006

						0900GMT		Temperature				Soil temperatures (depth in cm)																Rain	Fr.	Pch													
DD	N	dd	ff	ww	VV	Temp	RH	Max	Min	Gmin	5	10	20	30	50	100	E	SS	Rain	Sun	S	L	H	T	G	F	Press	hrs	hrs	Evap													
01	8	18	05	21	96	11.0	97	13.6	8.9	2.3	9.1	8.8	8.4	9.4	9.6	10.7	10	0	2.4	0.0	0	0	0	0	0	0	1017.0	4.6	0.0	0.4	Number of												
02	8	21	02	02	96	9.8	96	11.9	9.4	6.6	9.0	9.6	9.9	9.9	9.8	10.7	10	0	5.8	2.7	0	0	0	0	0	0	1011.5	3.0	0.0	1.2	days with												
03	8	18	19	61	96	9.2	95	12.0	8.1	3.5	8.6	8.9	8.9	9.8	9.8	10.7	10	0	0.0	5.5	0	0	0	0	0	0	993.0	0.0	0.0	2.1	2006	normal											
04	7	23	13	02	97	9.0	87	14.2	7.1	3.5	6.9	7.2	7.7	9.3	9.9	10.7	10	0	0.6	3.4	0	0	0	0	0	0	997.5	2.0	0.0	1.8	Snow/sleet falling												
05	8	21	19	21	97	13.5	86	13.5	7.6	4.0	9.7	10.0	9.9	10.2	9.9	10.6	10	0	2.1	0.7	0	0	0	0	0	0	991.0	0.5	0.0	2.6	0	1.7											
06	6	27	19	02	97	9.8	75	11.6	7.9	4.5	8.4	8.6	8.7	9.9	10.0	10.6	10	0	11.5	5.8	0	0	0	0	0	0	1001.0	5.9	0.0	1.3	50% snow cover 09GMT												
07	8	22	09	21	97	9.9	74	10.6	6.5	2.3	9.1	8.9	8.3	9.5	9.7	10.6	10	0	4.4	2.9	0	0	4	1	0	0	990.5	1.9	0.0	1.6	0	1.0											
08	8	18	05	02	97	7.8	94	8.8	7.5	5.4	7.9	7.9	8.4	9.1	9.4	10.6	10	0	0.0	0.1	0	0	0	0	0	0	985.0	0.0	0.0	0.4	Hail or ice pellets												
09	1	27	02	02	97	4.0	97	8.4	1.2	-2.5	5.1	5.5	7.2	8.5	9.2	10.6	10	0	0.0	6.3	0	0	0	0	0	0	1010.0	0.0	0.0	0.5	1	0.3											
10	3	22	02	02	97	0.0	91	12.4	-1.7	-4.8	3.4	3.9	5.9	7.6	8.6	10.4	40	0	8.9	1.6	0	0	0	0	0	0	1026.0	10.8	7.5	1.0	Thunder												
11	8	21	19	61	96	12.3	97	12.3	0.0	-2.2	8.9	8.8	7.8	8.1	8.4	10.1	10	0	2.2	0.0	0	0	0	0	0	0	1010.5	3.0	0.0	0.1	1	0.2											
12	1	30	02	02	96	4.3	96	10.0	1.5	-1.5	6.0	5.7	7.0	8.1	8.5	10.0	10	0	0.0	3.2	0	0	0	0	0	0	1020.5	0.0	0.0	1.2	Gale												
13	3	21	09	02	97	9.6	92	12.3	3.7	0.0	8.8	8.7	8.6	8.4	8.5	10.0	10	0	0.0	0.0	0	0	0	0	0	0	1022.5	0.0	0.0	1.6	0	0.2											
14	8	23	13	21	97	10.4	88	13.1	7.8	6.0	9.7	9.8	9.4	9.1	9.0	9.9	10	0	0.0	0.0	0	0	0	0	0	0	1022.5	0.0	0.0	2.0	Fog at 09GMT												
15	8	22	09	02	97	10.6	87	12.9	10.0	8.0	9.5	9.5	9.7	9.5	9.3	10.0	10	0	4.8	0.0	0	0	0	0	0	0	1021.5	6.0	0.0	0.7	4	1.9											
16	6	31	05	02	97	4.8	98	8.2	4.4	0.5	8.1	8.2	9.2	9.5	9.5	10.0	10	0	0.0	5.4	0	0	0	0	0	0	1021.5	0.0	0.0	0.3	Air frost												
17	2	22	02	02	97	1.9	98	8.6	0.5	-2.8	4.6	5.0	6.9	8.4	9.0	10.1	10	0	1.0	6.9	0	0	0	0	0	0	1027.5	3.3	0.0	0.1	6	7.9											
18	8	12	05	60	94	5.2	95	7.2	1.9	-1.4	5.6	5.7	6.6	7.8	8.5	10.0	10	0	0.4	0.0	0	0	0	0	0	0	1028.0	1.2	0.0	0.0	Ground frost												
19	9	32	02	45	02	0.4	98	2.9	-0.8	-3.2	4.1	4.6	6.0	7.5	8.2	9.8	40	0	tr	0.0	0	0	0	0	0	1	1038.5	0.0	4.1	0.1	12	15.3											
20	9	07	02	45	02	-0.7	98	1.2	-1.2	-1.0	3.3	3.9	5.6	7.0	7.8	9.6	10	0	0.1	0.0	0	0	0	0	0	1	1041.0	0.1	10.0	0.0	0.2mm precipitation												
21	9	00	00	45	02	0.1	98	0.8	-1.5	-1.0	3.3	3.4	4.9	6.5	7.3	9.4	10	0	0.1	0.0	0	0	0	0	0	1	1044.5	0.1	3.0	0.0	17	15.1											
22	8	00	00	41	08	-3.0	97	1.6	-3.1	-5.3	2.2	2.7	4.4	6.0	6.8	9.0	40	0	0.2	0.0	0	0	0	0	0	1	1045.0	0.1	13.0	0.0	1.0mm precipitation												
23	8	18	02	10	94	1.6	98	5.0	-3.0	-4.1	3.4	3.2	4.4	5.6	6.4	8.8	10	0	0.0	0.0	0	0	0	0	0	0	1043.0	0.0	0.0	0.5	12	11.2											
24	8	00	00	02	96	5.0	94	6.5	1.6	0.4	4.9	4.7	5.2	5.9	6.3	8.5	10	0	0.0	0.0	0	0	0	0	0	0	1039.5	0.0	0.0	0.5	5.0mm precipitation												
25	8	09	05	02	96	6.5	78	6.7	5.0	3.8	5.6	5.4	5.9	6.1	6.5	8.4	10	0	0.0	0.0	0	0	0	0	0	0	1036.5	0.0	0.0	0.6	6	4.9											
26	8	00	00	02	96	5.8	92	6.9	5.1	4.2	5.5	5.4	6.0	6.4	6.7	8.2	10	0	0.4	0.0	0	0	0	0	0	0	1035.0	2.2	0.0	0.3	No sunshine												
27	8	18	02	02	94	4.1	98	10.1	4.1	3.5	5.1	5.6	6.1	6.6	6.7	8.2	10	0	0.3	0.0	0	0	0	0	0	0	1031.5	0.9	0.0	0.4	17	14.7											
28	7	21	02	02	96	8.8	97	11.3	3.3	-0.1	6.2	7.1	6.7	6.8	6.9	8.3	10	0	0.0	3.9	0	0	0	0	0	0	1027.5	0.0	0.0	0.6	Another warm month,												
29	8	20	09	02	97	7.6	93	13.1	5.4	2.3	6.3	6.2	5.8	7.1	7.1	8.2	10	0	16.0	0.0	0	0	0	0	0	0	1017.0	8.2	0.0	0.2	although the main feature												
30	0	21	05	01	97	10.5	87	12.9	7.6	4.6	8.6	8.4	8.4	7.9	7.5	8.4	10	0	11.5	2.9	0	0	0	0	0	0	1010.0	3.7	0.0	0.9	was the persistent fog during												
31	8	22	13	02	97	8.8	95	12.5	5.9	1.7	7.1	6.8	8.0	8.0	7.9	8.4	10	0	6.3	0.0	0	0	0	0	0	0	1021.0	4.6	0.0	1.1	an anticyclonic spell on the												
Monthly means						6.4	92	9.5	3.9	1.2	6.6	6.7	7.3	8.0	8.3	9.7											1020.2																
Monthly totals																79.0	51.3											62.1	37.6	24.1	2002 it was the warmest												
Highest values						13.5	14.2	10.0	8.0	9.7	10.0	9.9	10.2	10.0	10.7											16.0	6.9											10.8	13.0	2.6	December since 1994. The		
Lowest values						-3.0	74	0.8	-3.1	-5.3	2.2	2.7	4.4	5.6	6.3	8.2																											
1971-2000 monthly climatological averages						90	8.3	2.6	0.4	4.6	4.8	5.7	6.3	6.7	8.1											65.6	40.9											1015.2	59.2	61.4	21.1	30cm depth was the highest	

23rd-26th which was freezing at times and kept daytime temperatures low. Along with 2002 it was the warmest December since 1994. The mean soil temperature at 30cm depth was the highest since 1953.

Key

DD: date

07GMT observations

N	cloud cover (oktas, 9=obscured)	dd	wind direction (degrees/10)
ff	wind speed (knots)		
ww	present weather code		
1	cloud decreasing	41	fog patches
2	sky not changing	45	fog
3	cloud increasing	50	intermittent slight drizzle
10	mist	60	intermittent slight rain
21	recent rain	61	continuous slight rain
VV	visibility (00-50 metres/100, 94 very poor, 95 poor, 96 moderate, 97 good)		

Soil temperatures are for 0700GMT beneath bare soil (5, 10, 20cm) or grass (30, 50, 100cm)

09GMT observations

Temp	temperature (degC)	RH	relative humidity (%)
E	state of ground (10 moist, 20 wet, 40 frozen, X5/X6 snow)	SS	snow depth (cm)
Press	air pressure (mb)		

24 hour readings

Max	maximum temperature (degC) beginning 09GMT	Min	minimum temperature (degC) ending 09GMT
Gmin	grass minimum temperature (degC) ending 09GMT	Rain	precipitation beginning 09GMT
Sun	sunshine (hours) sunrise-sunset	Rain hrs	hours of rainfall (>0.1mm/h) 09-09GMT
Fr. Hrs	hours of air frost (00-24GMT)	Pch Evap	Piche evaporation (ml) beginning 09GMT

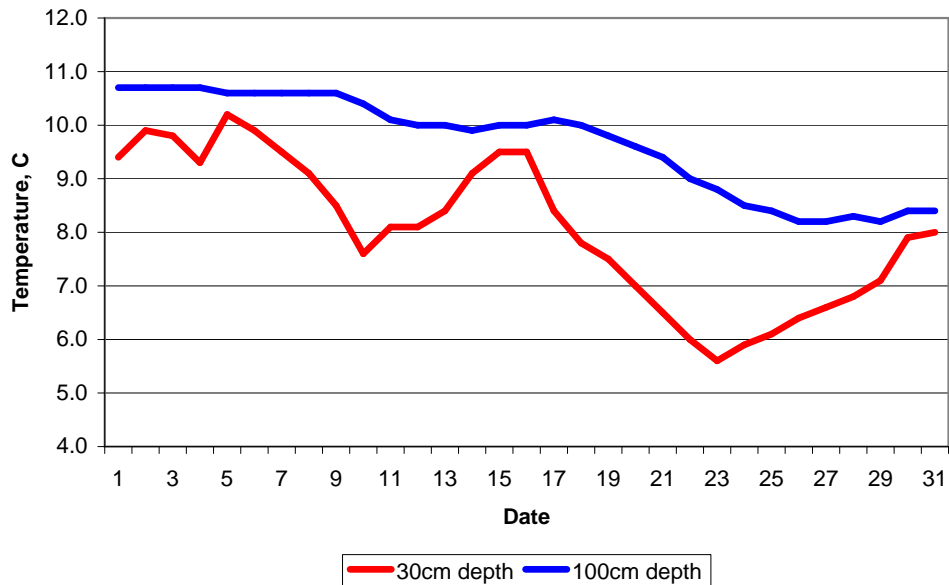
Days with

S	snow(5) or sleet(1) falling	L	50% snow cover at 09GMT	H	hail or ice pellets
T	thunder heard	G	gale	F	fog at 09GMT

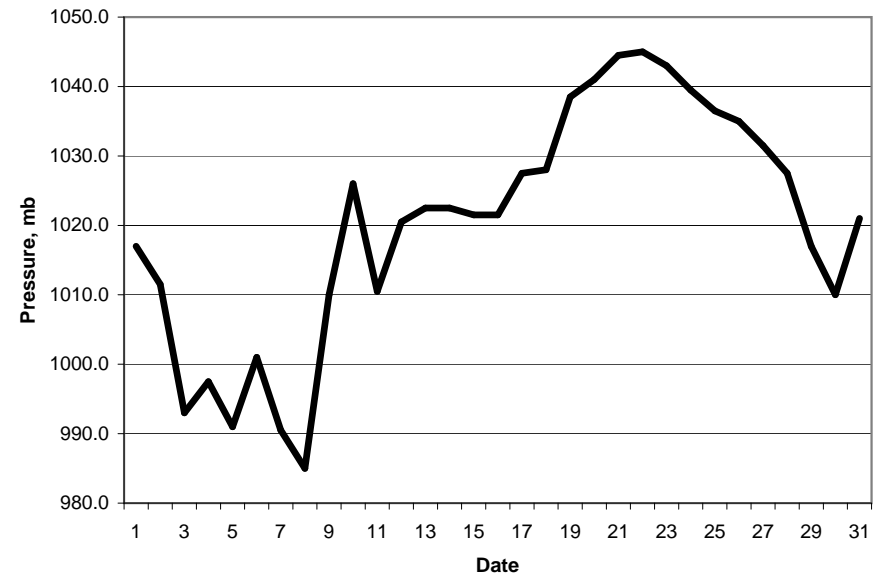
This information (and data for earlier months) is also available at

<http://www.met.rdg.a.uk/~brugge>

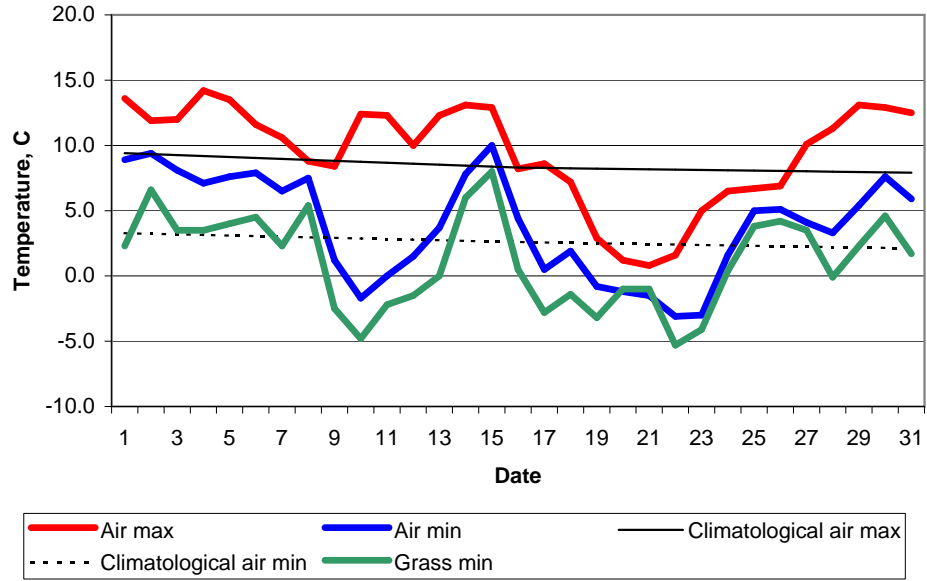
Daily soil temperatures, 0700GMT



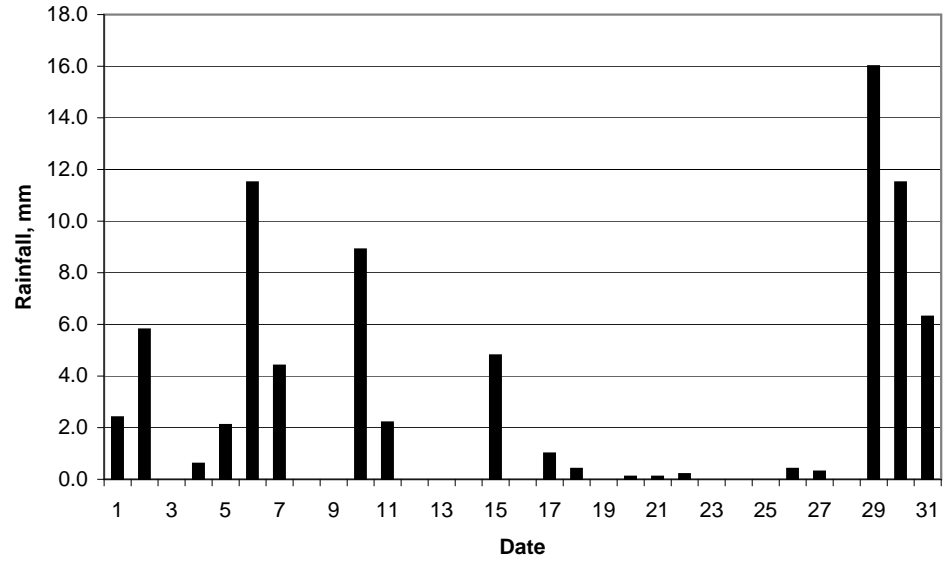
Mean sea level pressure, 0900GMT



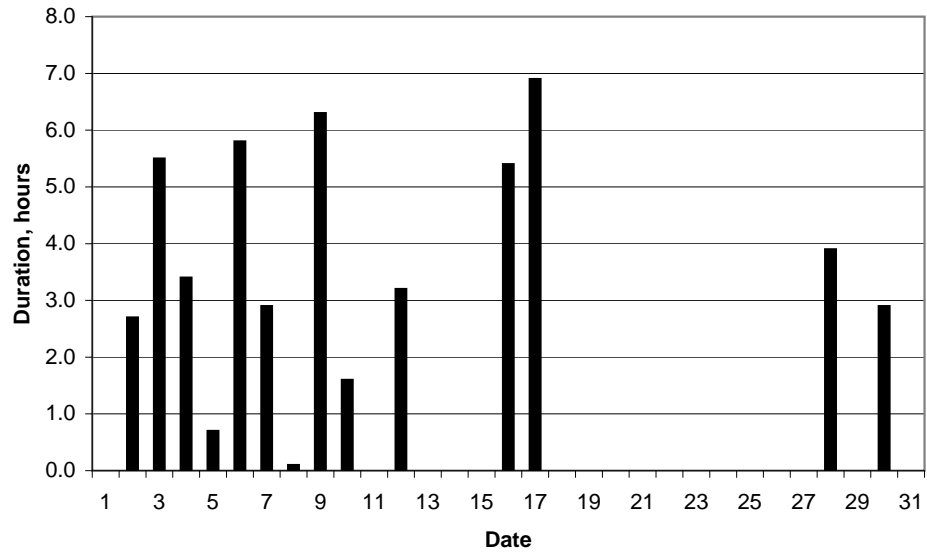
Daily temperature extremes



Daily rainfall



Daily sunshine



Daily evaporation

