

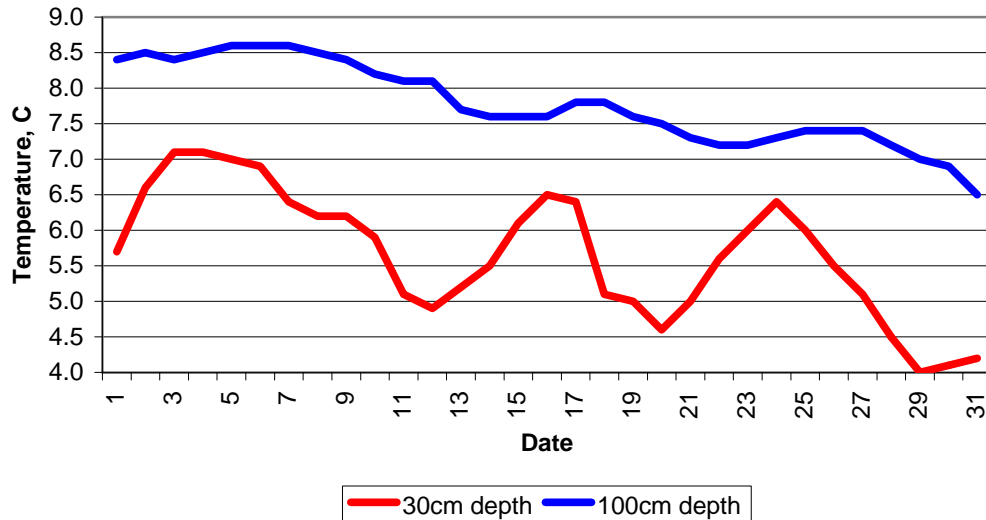
MAIDENHEAD METEOROLOGICAL OBSERVATIONS FOR DECEMBER 2005

DD	N	dd	ff	ww	VV	0900GMT Temp	RH	Temperature			Soil temperatures (depth in cm)						E	SS	Rain	Sun	S	L	H	T	G	F	Press	Rain hrs	Fr. hrs	Pch Evap			
						Max	Min	Gmin	5	10	20	30	50	100																			
01	9	18	09	02	97	9.3	93	9.6	0.4	-2.1	5.4	5.3	5.4	5.7	6.3	8.4	10	0	19.7	0.0	0	0	0	0	0	0	993.0	13.0	0.0	0.4	Number of		
02	8	16	19	02	97	8.9	89	10.5	6.9	6.3	6.2	6.3	6.1	6.6	6.5	8.5	10	0	6.3	2.0	0	0	4	1	0	0	980.5	4.0	0.0	1.0	days with		
03	8	18	09	02	97	7.7	90	10.6	7.1	3.6	6.2	6.1	6.7	7.1	6.9	8.4	10	0	0.9	2.7	0	0	0	0	0	0	984.5	2.0	0.0	0.7	2005 normal		
04	7	26	02	02	97	5.0	94	10.0	3.8	-0.9	5.7	5.6	6.3	7.1	7.1	8.5	10	0	0.0	3.2	0	0	0	0	0	0	990.5	0.0	0.0	0.5	Snow/sleet falling		
05	8	27	05	02	97	6.3	90	8.7	5.0	-0.6	5.9	5.5	6.1	7.0	7.2	8.6	10	0	tr	0.1	0	0	0	0	0	0	997.0	0.0	0.0	0.4	4 1.7		
06	8	27	02	02	96	2.5	99	6.5	-0.4	-3.6	4.3	5.4	5.7	6.9	7.3	8.6	10	0	tr	0.0	0	0	0	0	0	0	1004.0	0.0	2.2	0.2	50% snow cover 09GMT		
07	0	23	02	10	94	0.2	99	7.2	-0.9	-4.5	3.0	3.3	5.0	6.4	6.8	8.6	40	0	5.8	5.2	0	0	0	0	0	0	1016.0	6.0	1.5	0.4	1 1.0		
08	8	22	09	02	97	7.2	94	7.7	0.2	-2.0	5.5	5.4	5.6	6.2	6.6	8.5	10	0	0.2	0.2	0	0	0	0	0	0	1009.0	0.5	0.0	0.2	Hail or ice pellets		
09	9	00	00	45	03	1.5	99	3.9	-0.4	-4.0	3.2	3.7	5.0	6.2	6.7	8.4	10	0	tr	3.0	0	0	0	0	0	1	1034.5	0.0	1.0	0.1	1 0.3		
10	2	00	00	02	05	0.0	99	5.7	-0.8	-3.5	2.7	2.9	4.4	5.9	6.4	8.2	10	0	tr	6.0	0	0	0	0	0	1	1039.5	0.0	1.5	0.0	Thunder		
11	9	27	02	45	04	-0.2	98	7.6	-1.0	-3.3	2.8	2.8	3.9	5.1	6.0	8.1	10	0	0.1	3.0	0	0	0	0	0	0	1040.5	0.1	3.1	0.0	1 0.2		
12	8	35	09	02	95	7.6	90	8.1	-1.3	-4.0	3.3	2.8	3.4	4.9	5.7	8.1	10	0	0.0	3.3	0	0	0	0	0	0	1037.5	0.0	2.2	0.7	Gale		
13	8	36	05	02	97	6.0	87	7.7	4.3	-0.1	3.9	4.3	4.5	5.2	5.6	7.7	10	0	0.0	2.0	0	0	0	0	0	0	1039.5	0.0	0.0	0.7	0 0.2		
14	8	23	05	02	97	7.7	92	8.9	3.0	-0.1	5.1	4.7	4.8	5.5	5.9	7.6	10	0	0.0	0.1	0	0	0	0	0	0	1032.0	0.0	0.0	0.7	Fog at 09GMT		
15	8	27	05	02	97	8.6	83	10.6	6.1	2.1	5.8	5.4	5.6	6.1	6.1	7.6	10	0	0.0	1.2	0	0	0	0	0	0	1025.5	0.0	0.0	0.8	2 1.9		
16	7	26	13	02	97	10.6	85	12.7	8.4	3.1	6.7	6.2	6.3	6.5	6.4	7.6	10	0	0.0	5.9	0	0	0	0	0	0	1011.5	0.0	0.0	2.3	Air frost		
17	2	32	09	02	97	1.7	75	4.2	0.2	-4.2	2.9	3.3	5.0	6.4	6.5	7.8	10	0	0.0	6.2	0	0	0	0	0	0	1020.0	0.0	2.0	2.2	14 7.9		
18	4	00	00	02	97	-3.9	96	7.5	-4.8	-8.6	1.1	1.6	3.4	5.1	6.3	7.8	40	0	0.7	4.7	0	0	0	0	0	0	1025.0	1.5	10.4	1.0	Ground frost		
19	3	27	02	01	97	3.0	98	9.0	-3.9	-7.9	2.9	2.9	3.9	5.0	5.5	7.6	10	0	0.0	6.5	0	0	0	0	0	0	1022.0	0.0	0.2	0.3	26 15.3		
20	7	27	02	02	97	0.4	97	8.0	-2.3	-5.5	1.7	1.7	3.1	4.6	5.5	7.5	40	0	0.0	2.1	0	0	0	0	0	0	1029.5	0.0	7.5	0.3	0.2mm precipitation		
21	8	21	02	02	94	8.0	96	9.3	0.4	-5.9	4.6	4.0	4.3	5.0	5.2	7.3	10	0	0.0	0.6	0	0	0	0	0	0	1030.5	0.0	0.0	0.4	10 15.1		
22	4	25	02	10	94	4.0	98	9.7	4.0	-0.6	4.8	4.8	5.2	5.6	5.5	7.2	10	0	0.0	0.1	0	0	0	0	0	0	1030.5	0.0	0.0	0.7	1.0mm precipitation		
23	8	23	02	02	97	8.4	82	9.8	4.0	-0.6	6.1	5.6	5.8	6.0	5.8	7.2	10	0	0.0	0.1	0	0	0	0	0	0	1026.5	0.0	0.0	0.7	5 11.2		
24	8	25	02	02	97	6.3	95	11.2	3.8	-0.9	5.3	5.2	5.7	6.4	6.2	7.3	10	0	tr	5.0	0	0	0	0	0	0	1025.5	0.0	0.0	0.2	5.0mm precipitation		
25	8	27	02	03	96	3.2	98	6.5	0.7	-3.1	4.2	4.0	5.0	6.0	6.2	7.4	10	0	tr	2.9	0	0	0	0	0	0	1027.0	0.0	2.4	0.8	4 4.9		
26	8	32	05	21	97	3.4	93	5.6	-0.8	-4.8	3.4	3.4	4.4	5.5	6.0	7.4	10	0	0.7	0.1	0	0	0	0	0	0	1022.0	0.4	0.0	0.4	No sunshine		
27	1	36	13	02	97	0.9	92	2.8	-0.2	-4.1	1.7	1.9	3.6	5.1	5.7	7.4	40	0	0.1	3.0	5	0	0	0	0	0	1016.0	0.1	2.0	0.6	3 14.7		
28	2	09	09	02	97	-1.0	98	1.5	-1.6	-4.8	1.1	1.3	2.9	4.5	5.3	7.2	X6	<1	0.0	6.2	5	1	3	0	0	0	1017.0	0.0	18.0	0.0	A slightly colder-than-		
29	8	32	02	02	96	-0.9	90	3.0	-1.0	-4.8	1.6	1.6	2.5	4.0	4.7	7.0	X5	<1	3.1	0.0	5	0	0	0	0	0	1018.0	2.9	24.0	0.2	average month with four		
30	8	18	05	61	95	2.5	97	8.1	-1.2	-2.9	1.7	1.7	2.6	4.1	4.5	6.9	10	0	18.9	x0	1	0	0	0	0	0	1002.0	8.2	0.5	0.5	days of snow/sleet falling,		
31	7	23	05	02	97	6.7	89	8.1	2.5	0.9	3.8	3.3	3.7	4.2	4.5	6.5	10	0	0.7	0.6	0	0	0	0	0	0	995.5	0.8	0.0	0.5	but none of the falls were		
Monthly means						4.2	93	7.8	1.3	-2.3	4.0	3.9	4.7	5.7	6.0	7.8											1017.5				large. Much sunnier than		
Monthly totals																				57.2	76.0						39.5	78.5	17.9	average with only three			
Highest values																															sunless days. A slightly		
Lowest values						10.6		12.7	8.4	6.3	6.7	6.3	6.7	7.1	7.3	8.6			19.7	6.5								13.0	24.0	2.3	wintry spell of weather		
1971-2000 monthly climatological averages						-3.9	75	1.5	-4.8	-8.6	1.1	1.3	2.5	4.0	4.5	6.5																	between Christmas and the
						90	8.3	2.6	0.4	4.6	4.8	5.7	6.3	6.7	8.1			65.6	40.9								1015.2	59.2	61.4	21.1	New Year.		

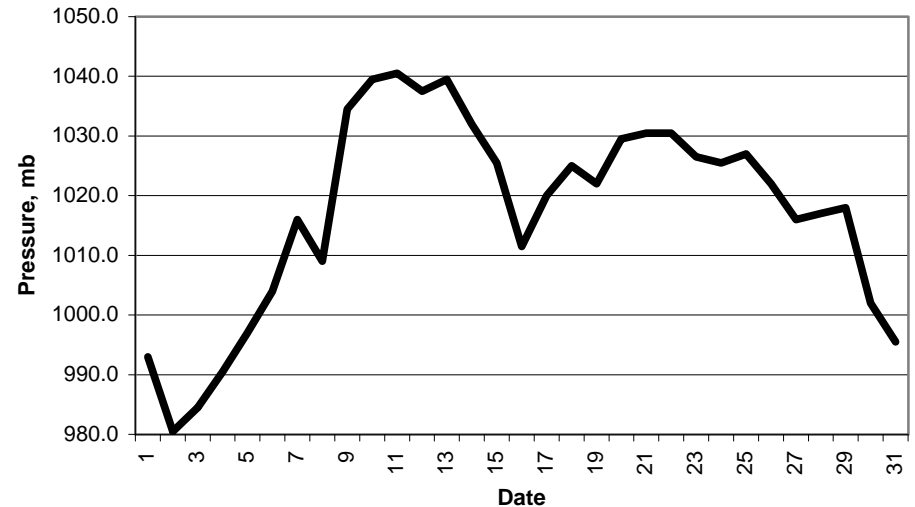
Key  
 DD: date  
 07GMT observations  
 N cloud cover (oktas, 9=obscured) dd wind direction (degrees/10)  
 ff wind speed (knots)  
 ww present weather code  
 1 cloud decreasing 21 recent rain  
 2 sky not changing 46 fog  
 3 cloud increasing 50 intermittent slight drizzle  
 10 mist 60 intermittent slight rain  
 11 shallow fog patches 61 continuous slight rain  
 20 recent drizzle  
 VV visibility (00-50 metres/100, 94 very poor, 95 poor, 96 moderate, 97 good)  
 Soil temperatures are for 0700GMT beneath bare soil (5, 10, 20cm) or grass (30, 50, 100cm)  
 09GMT observations  
 Temp temperature (degC) RH relative humidity (%)  
 E state of ground (10 moist, 20 wet, 40 frozen, X5/X6 snow) SS snow depth (cm)  
 Press air pressure (mb)  
 24 hour readings  
 Max maximum temperature (degC) beginning 09GMT Min minimum temperature (degC) ending 09GMT  
 Gmin grass minimum temperature (degC) ending 09GMT Rain precipitation beginning 09GMT  
 Sun sunshine (hours) sunrise-sunset Rain hrs hours of rainfall (>0.1mm/h) 09-09GMT  
 Fr. Hrs hours of air frost (00-24GMT) Pch Evap Piche evaporation (ml) beginning 09GMT  
 Days with  
 S snow(5) or sleet(1) falling L 50% snow cover at 09GMT H hail or ice pellets  
 T thunder heard G gale F fog at 09GMT

This information (and data for earlier months) is also available at <http://www.met.rdg.a.uk/~brugge>

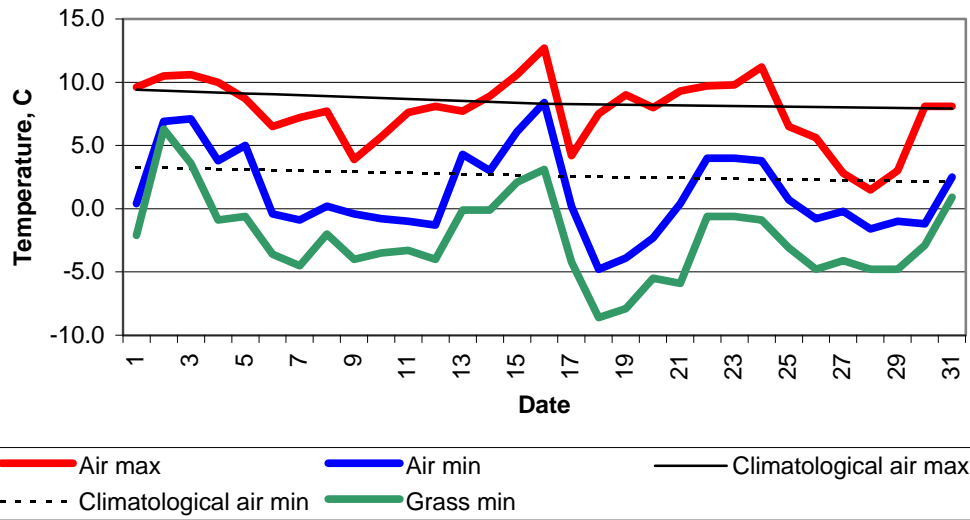
**Daily soil temperatures, 0700GMT**



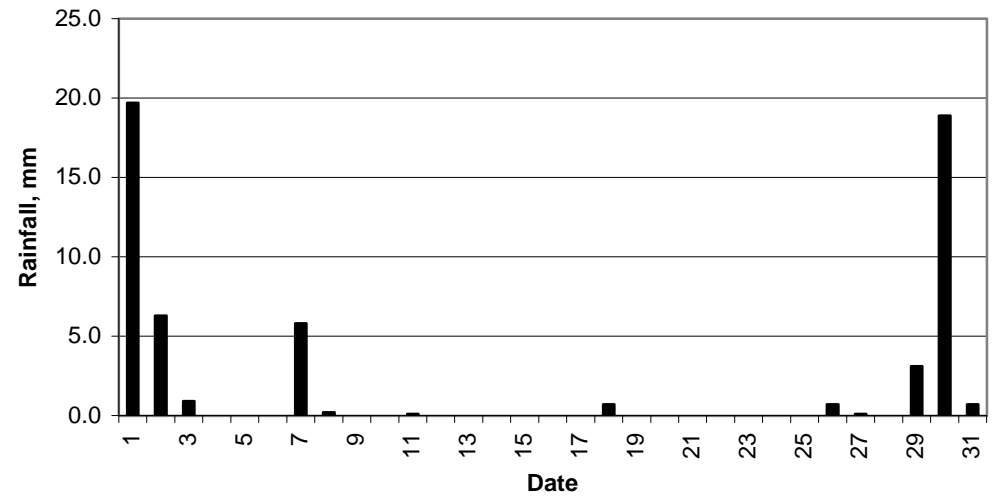
**Mean sea level pressure, 0900GMT**



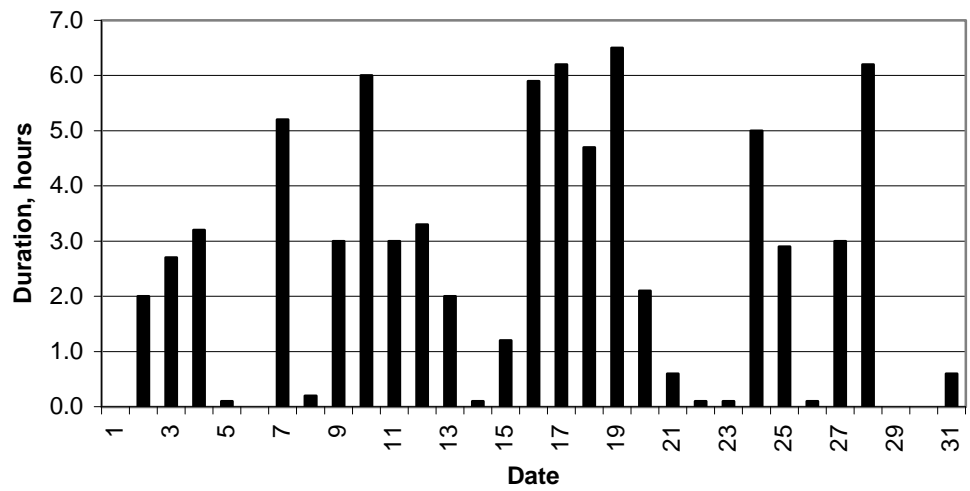
### Daily temperature extremes



### Daily rainfall



### Daily sunshine



### Daily evaporation

