

MAIDENHEAD METEOROLOGICAL OBSERVATIONS FOR DECEMBER 2004

DD	N	dd	ff	ww	VV	0900GMT		Temperature			Soil temperatures (depth in cm)						E	SS	Rain	Sun	S	L	H	T	G	F	Press	Rain hrs	Fr. hrs	Pch Evap			
						Temp	RH	Max	Min	Gmin	5	10	20	30	50	100																	
01	1	36	02	02	96	3.0	93	7.4	-0.3	-2.9	4.9	5.1	6.4	7.6	8.6	10.1	10	0	0.0	2.8	0	0	0	0	0	0	0	1011.5	0.0	2.0	0.8	Number of	
02	7	33	02	10	95	3.5	96	6.1	0.4	-1.0	4.6	4.4	6.0	7.2	8.3	10.0	10	0	0.0	0.0	0	0	0	0	0	0	1016.0	0.0	0.0	0.1	days with		
03	8	00	00	46	06	3.0	99	5.6	1.7	-1.7	4.9	5.0	5.8	7.0	7.8	9.8	10	0	0.0	0.0	0	0	0	0	0	1	1024.5	0.0	0.0	0.0	2004 normal		
04	6	27	02	02	95	5.6	97	9.4	3.0	-0.6	5.5	5.3	6.1	7.0	7.7	9.5	10	0	0.0	0.0	0	0	0	0	0	0	1031.0	0.0	0.0	0.2	Snow/sleet falling		
05	6	27	02	02	97	7.5	95	10.9	5.6	1.0	6.4	6.2	6.8	7.3	7.6	9.4	10	0	tr	0.0	0	0	0	0	0	0	1032.0	0.0	0.0	0.5	1 1.7		
06	8	27	02	02	97	9.2	95	10.7	7.1	4.4	7.7	7.3	7.7	7.9	7.8	9.2	10	0	0.0	0.0	0	0	0	0	0	0	1030.5	0.0	0.0	0.3	50% snow cover 09GMT		
07	8	27	02	03	96	5.1	98	8.5	1.7	-0.9	5.4	5.5	6.7	7.6	7.3	9.2	10	0	tr	0.0	0	0	0	0	0	0	1031.5	0.0	0.0	0.1	0 1.0		
08	8	14	02	02	94	8.5	95	8.9	5.1	2.6	7.3	7.2	7.5	7.9	7.9	9.2	10	0	0.0	0.0	0	0	0	0	0	0	1034.0	0.0	0.0	0.1	Hail or ice pellets		
09	0	09	02	11	08	2.2	92	6.1	2.2	-0.9	5.8	6.2	7.3	7.9	7.9	9.2	10	0	0.0	2.5	0	0	0	0	0	0	1029.0	0.0	0.0	0.4	0 0.3		
10	8	32	02	03	96	5.1	93	6.4	2.2	-1.0	6.1	5.9	6.9	7.5	7.8	9.2	10	0	0.0	0.0	0	0	0	0	0	0	1025.5	0.0	0.0	0.4	Thunder		
11	3	32	02	02	95	-0.4	99	7.1	-0.8	-2.7	3.4	3.9	5.5	7.0	7.7	9.1	10	0	0.0	2.6	0	0	0	0	0	0	1031.5	0.0	7.0	0.2	0 0.2		
12	8	14	05	02	95	6.3	90	6.3	-0.4	-1.0	6.1	5.8	6.8	6.9	7.3	9.1	10	0	0.0	0.0	0	0	0	0	0	0	1031.5	0.0	0.0	0.6	Gale		
13	8	18	05	02	94	1.7	94	4.8	1.7	0.0	4.7	4.8	6.0	6.9	7.3	9.0	10	0	0.2	0.0	0	0	0	0	0	0	1030.5	1.5	0.0	0.4	0 0.2		
14	8	20	02	02	95	4.8	98	10.4	1.5	-1.0	5.1	5.0	5.8	6.5	7.1	8.8	10	0	0.1	0.0	0	0	0	0	0	0	1028.0	0.3	0.0	0.3	Fog at 09GMT		
15	8	22	05	02	96	10.4	90	11.9	4.3	4.2	7.6	7.2	6.6	7.0	7.2	8.6	10	0	0.5	0.1	0	0	0	0	0	0	1021.0	1.6	0.0	0.5	1 1.9		
16	8	23	09	21	97	11.0	96	11.0	7.3	2.0	8.3	7.9	7.6	7.0	7.3	8.6	10	0	3.4	2.6	0	0	0	0	0	0	1005.0	2.4	0.0	1.1	Air frost		
17	8	22	05	60	96	6.7	95	6.9	6.5	3.1	6.2	6.2	6.5	7.5	7.5	8.6	10	0	10.1	0.0	0	0	0	0	0	0	995.0	4.7	0.0	0.8	10 7.9		
18	5	27	09	02	97	3.5	90	7.4	1.7	-2.5	3.8	4.1	5.4	6.9	7.5	8.7	10	0	13.1	0.2	0	0	0	0	0	0	1014.5	8.8	0.0	0.6	Ground frost		
19	6	05	13	02	97	3.9	67	5.9	3.2	0.9	4.0	4.4	5.6	6.7	7.3	8.6	10	0	0.0	6.2	5	0	0	0	0	0	1021.5	0.0	2.0	0.6	20 15.3		
20	6	18	02	03	97	-1.5	97	5.5	-3.0	-6.5	1.6	2.7	4.0	5.9	7.2	8.5	40	0	0.2	1.0	0	0	0	0	0	0	1023.5	0.5	10.2	0.5	0.2mm precipitation		
21	8	29	05	10	94	2.5	98	7.7	-1.5	-6.5	3.2	3.2	4.2	5.5	6.7	8.3	10	0	8.3	0.0	0	0	0	0	0	0	1026.0	6.8	1.9	0.1	9 15.1		
22	8	24	13	02	96	7.7	96	11.7	-0.2	-4.4	4.5	3.9	4.4	5.0	6.7	8.0	10	0	0.0	0.0	0	0	0	0	0	0	1017.0	0.0	0.0	0.8	1.0mm precipitation		
23	6	21	13	02	97	10.7	79	13.0	7.7	6.3	7.3	6.8	6.9	6.2	7.2	7.9	10	0	0.0	3.1	0	0	0	0	0	0	1013.0	0.0	0.0	1.9	6 11.2		
24	6	23	05	02	97	7.0	85	10.0	6.9	2.0	5.8	6.1	6.8	7.0	6.9	7.9	10	0	1.7	0.8	0	0	0	0	0	0	1009.5	1.5	0.0	0.8	5.0mm precipitation		
25	0	24	02	02	97	0.2	96	4.2	-0.2	-4.0	3.4	4.2	5.7	6.9	7.1	8.0	10	0	0.0	1.0	0	0	0	0	0	0	998.5	0.0	5.2	0.3	4 4.9		
26	0	31	02	02	97	-1.5	99	3.9	-2.8	-7.1	1.2	1.7	3.9	5.8	6.5	8.1	40	0	0.0	6.5	0	0	0	0	0	0	1011.5	0.0	11.0	0.4	No sunshine		
27	0	00	00	02	97	-2.7	93	5.2	-3.2	-6.9	0.4	1.2	2.9	4.9	5.9	8.0	40	0	7.4	3.8	0	0	0	0	0	0	1023.5	4.0	11.2	0.5	14 14.7		
28	3	30	09	21	97	2.5	86	8.1	-2.7	-6.3	2.9	2.5	3.0	4.7	5.4	7.5	10	0	0.0	5.7	0	0	0	0	0	0	1010.0	0.0	0.0	0.6	Slightly cooler than		
29	0	27	02	02	97	1.4	93	10.3	1.0	-3.4	1.6	1.8	3.2	4.6	5.4	7.5	10	0	0.1	2.6	0	0	0	0	0	0	1029.5	0.1	0.0	0.4	normal, but overall sunny		
30	8	24	02	02	97	10.2	90	12.9	1.4	-3.0	5.6	5.4	5.1	5.1	5.5	7.5	10	0	tr	1.7	0	0	0	0	0	0	1029.5	0.0	0.0	0.8	and dry. Many sunless		
31	8	22	09	02	97	10.5	89	12.0	6.2	0.9	6.6	5.9	5.6	5.9	6.0	7.3	10	0	0.0	2.1	0	0	0	0	0	0	1024.0	0.0	0.0	0.5	days during the first three		
Monthly means						4.8	93	8.3	2.0	-1.2	4.9	4.9	5.8	6.6	7.1	8.7												1021.3				weeks, with very little rain	
Monthly totals																				45.1	45.3							32.2	50.5	15.6	until the 16th. Generally		
Highest values																																an anticyclonic month	
Lowest values						11.0		13.0	7.7	6.3	8.3	7.9	7.7	7.9	8.6	10.1				13.1	6.5								8.8	11.2	1.9	with more air and ground	
1971-2000 monthly climatological averages						-2.7	67	3.9	-3.2	-7.1	0.4	1.2	2.9	4.6	5.4	7.3																	frosts than normal.
						90	8.3	2.6	0.4	4.6	4.8	5.7	6.3	6.7	8.1				65.6	40.9								1015.2	59.2	61.4	21.1		

Key

DD: date

07GMT observations

N	cloud cover (oktas, 9=obscured)	dd	wind direction (degrees/10)
ff	wind speed (knots)		
ww	present weather code		
1	cloud decreasing	21	recent rain
2	sky not changing	46	fog
3	cloud increasing	50	intermittent slight drizzle
10	mist	60	intermittent slight rain
11	shallow fog patches	61	continuous slight rain
20	recent drizzle		

VV visibility (00-50 metres/100, 94 very poor, 95 poor, 96 moderate, 97 good)

Soil temperatures are for 0700GMT beneath bare soil (5, 10, 20cm) or grass (30, 50, 100cm)

09GMT observations

Temp	temperature (degC)	RH	relative humidity (%)
E	state of ground (10 moist, 20 wet, 40 frozen, X5 snow)	SS	snow depth (cm)
Press	air pressure (mb)		

24 hour readings

Max	maximum temperature (degC) beginning 09GMT	Min	minimum temperature (degC) ending 09GMT
Gmin	grass minimum temperature (degC) ending 09GMT	Rain	precipitation beginning 09GMT
Sun	sunshine (hours) sunrise-sunset	Rain hrs	hours of rainfall (>0.1mm/h) 09-09GMT
Fr. Hrs	hours of air frost (00-24GMT)	Pch Evap	Piche evaporation (ml) beginning 09GMT

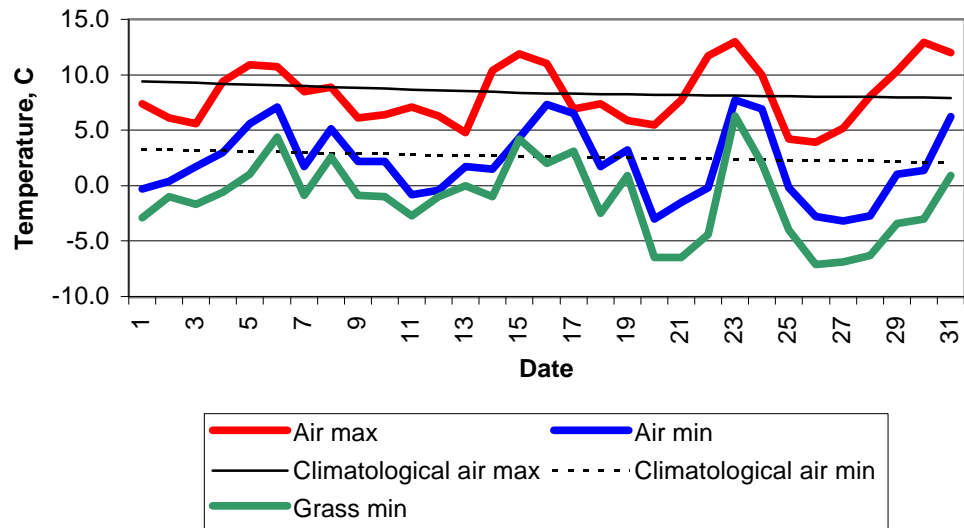
Days with

S	snow(5) or sleet(1) falling	L	50% snow cover at 09GMT	H	hail or ice pellets
T	thunder heard	G	gale	F	fog at 09GMT

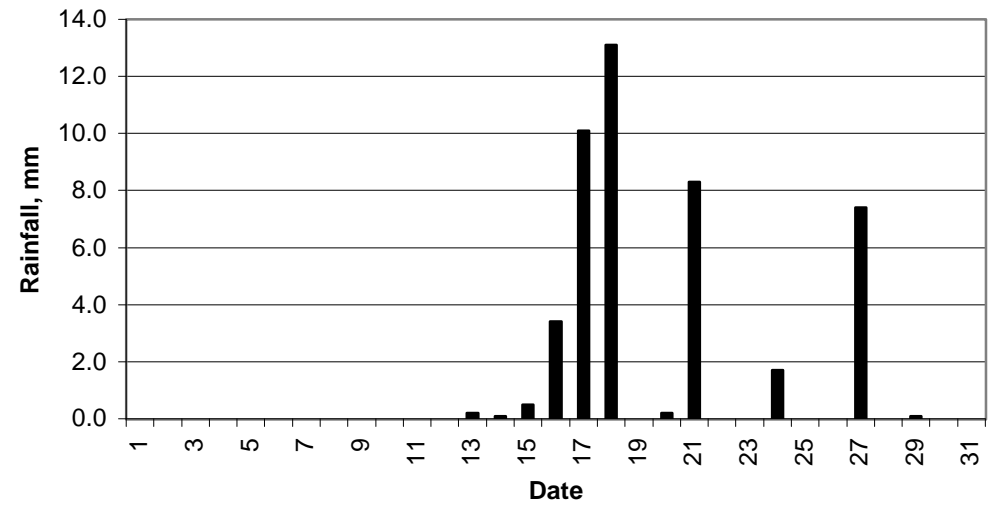
This information (and data for earlier months) is also available at

<http://www.met.rdg.a.uk/~brugge>

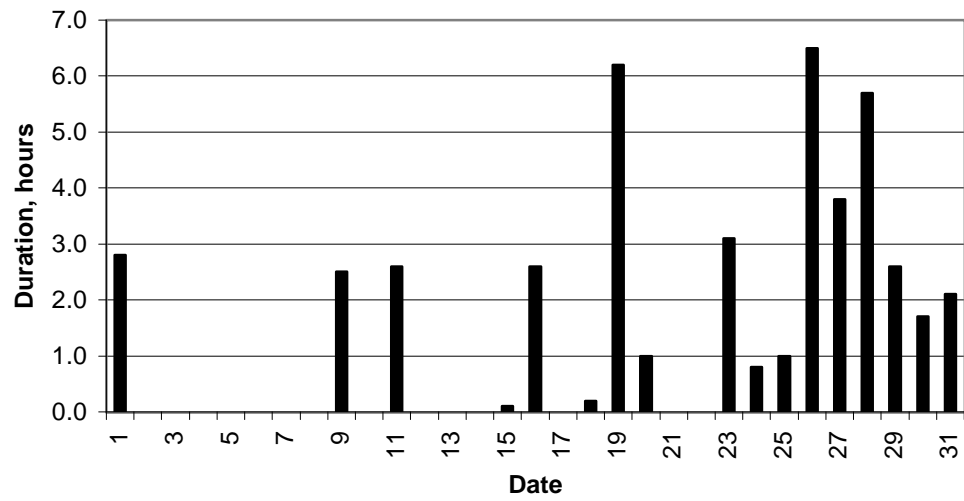
### Daily temperature extremes



### Daily rainfall



### Daily sunshine



### Daily evaporation

