

MAIDENHEAD METEOROLOGICAL OBSERVATIONS FOR AUGUST 2015

DD	N	dd	ff	ww	VV	0900GMT		Temperature			Soil temperatures (depth in cm)						E	SS	Rain	Sun	S	L	H	T	G	F	Press	Rain	Fr.	Pch		
						Temp	RH	Max	Min	Gmin	5	10	20	30	50	100												hrs	hrs	Evap		
01	1	27	02	02	97	19.2	75	25.4	13.7	11.7	16.8	17.4	18.5	19.0	18.5	17.6	10	0	1.7	7.5	0	0	0	0	0	0	1017.5	0.6	0.0	2.4	Number of days with 2019 normal Snow/sleet falling 0 50% snow cover 09GMT 0 Hail or ice pellets 0 Thunder 0 Gale 0 Fog at 09GMT 0 Air frost 0 Ground frost 0 0.2mm precipitation 14 1.0mm precipitation 8 5.0mm precipitation 2 No sunshine 2 An unusually late heatwave 23rd-28th, with 32C exceeded on three consecutive days. Overall a warm (the warmest since 2016), dry (the driest since 2016) and sunny (the sunniest since 2005) August. The 20th-27th was a very sunny period with 10 h sunshine on 7 of these days. 0.5 mm of rain fell in the last 12 days (on the 27th).	
02	1	36	02	02	97	20.4	70	25.7	14.2	12.0	17.6	18.2	19.0	19.1	18.5	17.5	10	0	tr	8.1	0	0	0	0	0	0	1019.0	0.0	0.0	2.7		
03	6	23	05	02	97	20.3	72	24.5	14.1	11.6	17.5	17.8	18.8	19.1	18.6	17.5	10	0	tr	4.2	0	0	0	0	0	0	1019.5	0.0	0.0	2.7		
04	7	09	05	02	97	21.0	72	26.5	14.1	12.0	18.3	17.8	19.0	19.1	18.6	17.5	03	0	0.5	1.6	0	0	0	0	0	0	1013.5	0.3	0.0	2.5		
05	8	18	02	21	97	18.9	94	25.5	16.1	14.0	18.3	18.3	19.4	19.2	18.6	17.6	10	0	0.1	7.1	0	0	0	0	0	0	1009.5	0.1	0.0	3.0		
06	6	23	05	02	97	20.9	66	24.4	14.2	10.6	17.8	18.8	19.2	19.4	18.7	17.6	03	0	3.7	8.2	0	0	0	0	0	0	1009.0	1.0	0.0	2.5		
07	7	23	05	02	97	18.4	78	24.5	13.7	11.8	17.1	17.6	18.8	19.1	18.7	17.6	10	0	0.2	7.0	0	0	0	0	0	0	1006.5	0.2	0.0	2.2		
08	7	23	02	02	97	19.9	72	24.6	12.9	10.4	16.6	16.9	18.1	18.8	18.5	17.6	10	0	3.5	6.7	0	0	0	0	0	0	1011.0	4.0	0.0	2.4		
09	8	13	05	02	97	21.8	72	24.2	17.7	15.0	19.2	19.4	19.7	19.7	19.4	17.5	10	0	2.5	5.5	0	0	0	0	0	0	1001.0	1.8	0.0	2.3		
10	6	23	13	02	97	19.0	71	22.6	17.0	15.5	17.5	18.3	19.0	19.0	19.4	17.6	10	0	0.1	6.5	0	0	0	0	0	0	1002.5	0.1	0.0	3.2		
11	2	23	09	02	97	19.5	63	22.6	14.6	12.2	15.6	16.4	17.9	17.9	18.6	17.6	10	0	tr	7.2	0	0	0	0	0	0	1011.0	0.0	0.0	2.4		
12	8	36	02	02	97	17.3	69	19.9	12.1	9.2	16.7	17.1	18.0	18.0	18.5	17.5	10	0	0.2	2.8	0	0	0	0	0	0	1014.5	0.2	0.0	1.9		
13	5	27	02	02	97	18.0	60	22.1	9.1	6.2	14.4	15.1	16.8	16.8	17.9	17.5	03	0	0.2	11.0	0	0	0	0	0	0	1018.0	0.2	0.0	2.5		
14	8	18	02	60	96	15.2	93	19.1	12.9	9.8	16.4	16.7	17.6	17.6	18.0	17.4	10	0	10.4	0.0	0	0	0	0	0	0	1014.5	6.9	0.0	0.4		
15	5	27	05	02	97	19.1	71	23.1	14.2	11.9	16.5	16.7	17.2	17.2	17.6	17.2	10	0	0.0	8.0	0	0	0	0	0	0	1012.0	0.0	0.0	1.9		
16	8	23	02	03	97	17.9	78	18.7	10.8	8.2	15.6	15.9	16.8	16.8	17.6	17.1	10	0	9.2	0.0	0	0	0	0	0	0	1013.5	9.7	0.0	0.9		
17	4	23	09	01	97	18.7	80	22.8	14.0	10.5	15.7	16.2	17.0	17.4	17.2	17.1	20	0	0.6	10.7	0	0	0	0	0	0	1006.0	0.8	0.0	2.2		
18	7	23	02	02	97	15.7	90	22.1	14.1	11.4	16.6	17.0	17.6	17.9	17.5	17.0	10	0	3.0	6.1	0	0	0	0	0	0	1005.0	1.8	0.0	1.7		
19	6	23	02	25	97	18.1	77	21.9	11.7	9.1	15.4	15.7	16.8	17.6	17.5	17.0	10	0	2.7	8.7	0	0	0	0	0	0	1013.5	0.8	0.0	2.0		
20	0	27	02	02	97	18.0	62	22.4	9.9	7.4	13.9	14.6	16.2	17.4	17.3	17.0	10	0	0.0	11.2	0	0	0	0	0	0	1022.5	0.0	0.0	2.2		
21	4	23	02	02	97	16.5	81	22.8	8.8	6.5	13.8	14.3	16.0	17.2	17.2	16.9	03	0	0.0	10.2	0	0	0	0	0	0	1028.0	0.0	0.0	2.2		
22	1	23	02	02	97	18.8	73	23.5	11.2	7.6	14.3	15.0	16.5	17.2	17.1	16.8	03	0	0.0	9.6	0	0	0	0	0	0	1025.5	0.0	0.0	1.9		
23	2	23	02	02	96	20.6	79	27.6	12.2	9.5	15.5	16.2	17.1	17.6	17.2	16.8	03	0	0.0	12.2	0	0	0	0	0	0	1026.0	0.0	0.0	2.3		
24	6	09	02	02	96	20.3	72	29.8	10.8	8.0	15.6	16.1	17.2	18.0	17.5	16.8	03	0	0.0	12.0	0	0	0	0	0	0	1020.5	0.0	0.0	3.2		
25	6	09	02	02	97	23.2	64	32.8	13.8	11.0	16.7	17.2	18.0	18.4	17.7	16.9	03	0	0.0	11.6	0	0	0	0	0	0	1018.0	0.0	0.0	4.0		
26	0	00	00	02	97	23.8	62	32.4	14.0	11.1	17.0	17.7	18.8	18.9	18.1	16.9	03	0	0.0	12.2	0	0	0	0	0	0	1017.5	0.0	0.0	3.5		
27	3	13	02	03	97	23.9	65	32.4	15.0	12.2	17.9	18.3	19.2	19.3	18.5	17.0	90	0	0.5	10.7	0	0	0	0	0	0	1015.0	1.0	0.0	3.4		
28	6	23	02	02	97	18.3	89	28.9	17.3	15.3	19.1	19.5	20.0	19.6	18.8	17.2	10	0	tr	6.6	0	0	0	0	0	0	1013.0	0.0	0.0	2.6		
29	2	23	05	02	97	18.0	72	23.7	10.3	7.8	16.3	17.4	19.0	19.5	18.9	17.4	03	0	0.0	8.6	0	0	0	0	0	0	1020.0	0.0	0.0	2.3		
30	7	23	02	02	97	18.8	75	25.6	12.3	9.0	16.6	17.2	18.5	18.9	18.6	17.4	03	0	0.0	8.9	0	0	0	0	0	0	1021.5	0.0	0.0	2.3		
31	5	23	02	03	97	18.5	73	23.1	12.7	9.7	17.0	17.2	18.4	18.8	18.5	17.5	90	0	tr	6.2	0	0	0	0	0	0	1013.0	0.0	0.0	2.1		
Monthly means						19.3	74	24.7	13.2	10.6	16.6	17.0	18.1	18.4	18.2	17.3												1014.8				
Monthly totals																				39.1	236.9							29.5	0.0	73.8		
Highest values						23.9		32.8	17.7	15.5	19.2	19.5	20.0	19.7	19.4	17.6			10.4	12.2								9.7	0.0	4.0		
Lowest values						15.2	60	18.7	8.8	6.2	13.8	14.3	16.0	16.8	17.1	16.8																
1981-2010 monthly climatological averages						76	22.8	13.0	11.0	16.3	16.8	17.9	18.1	17.8	16.8			53.8	192.7										1016.0	34.1	0.0	71.3

Key

DD: date

07GMT observations

N	cloud cover (oktas, 9=obscured)	dd	wind direction (degrees/10)
ff	wind speed (knots)		
ww	present weather code		
1	cloud decreasing	21	recent rain
2	sky not changing	25	recent rain shower
3	cloud increasing	50	intermittent slight drizzle
5	haze	61	continuous light rain
10	mist	63	continuous moderate rain

VV visibility (00-50 metres/100, 94 very poor, 95 poor, 96 moderate, 97 good)

Soil temperatures are for 0700GMT beneath bare soil (5, 10, 20cm) or grass (30, 50, 100cm)

09GMT observations

Temp	temperature (degC)	RH	relative humidity (%)
E	state of ground (00 dry, 10 moist, 20 wet, 90 cracked)	SS	snow depth (cm)
Press	air pressure (mb)		

24 hour readings

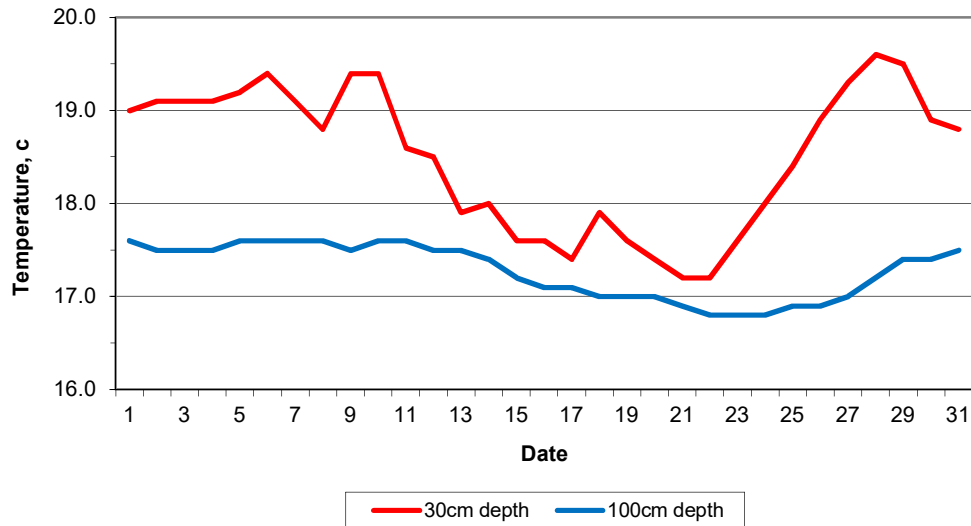
Max	maximum temperature (degC) beginning 09GMT	Min	minimum temperature (degC) ending 09GMT
Gmin	grass minimum temperature (degC) ending 09GMT	Rain	precipitation beginning 09GMT
Sun	sunshine (hours) sunrise-sunset	Rain hrs	hours of rainfall (>0.1mm/h) 09-09GMT
Fr. Hrs	hours of air frost (00-24GMT)	Pch Evap	Piche evaporation (ml) beginning 09GMT

Days with

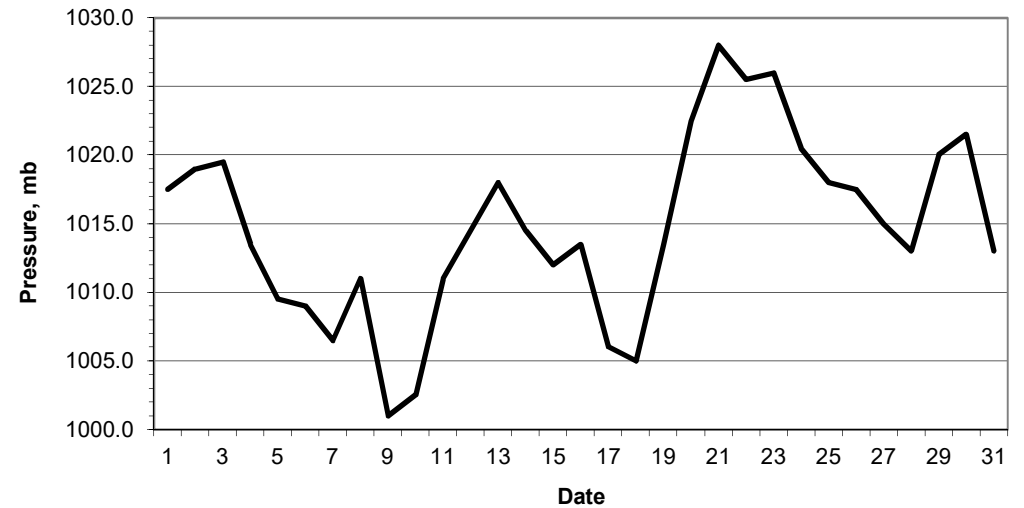
S	snow(5) or sleet(1) falling	L	50% snow cover at 09GMT	H	hail or ice pellets
T	thunder heard	G	gale	F	fog at 09GMT

This information (and data for earlier months) is also available <http://www.met.rdg.a.uk/~brugg>

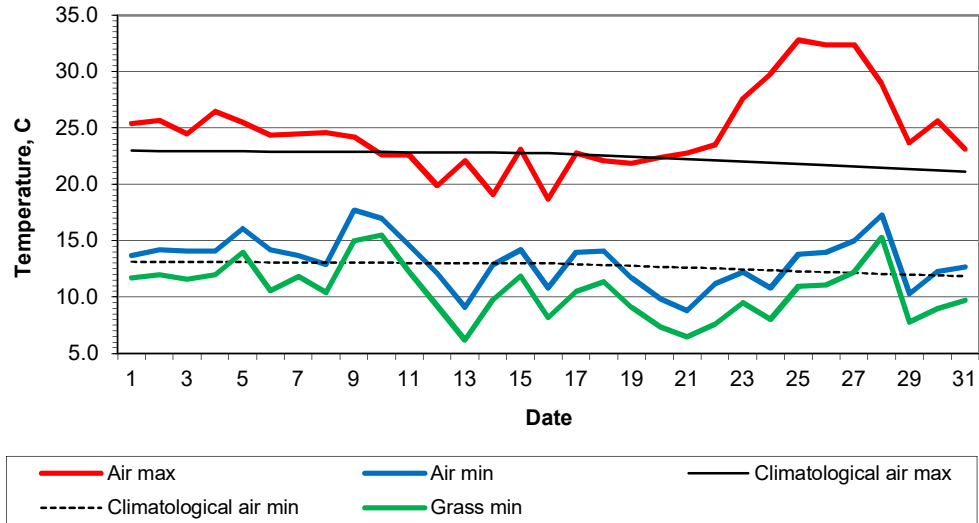
Daily soil temperatures, 0700GMT



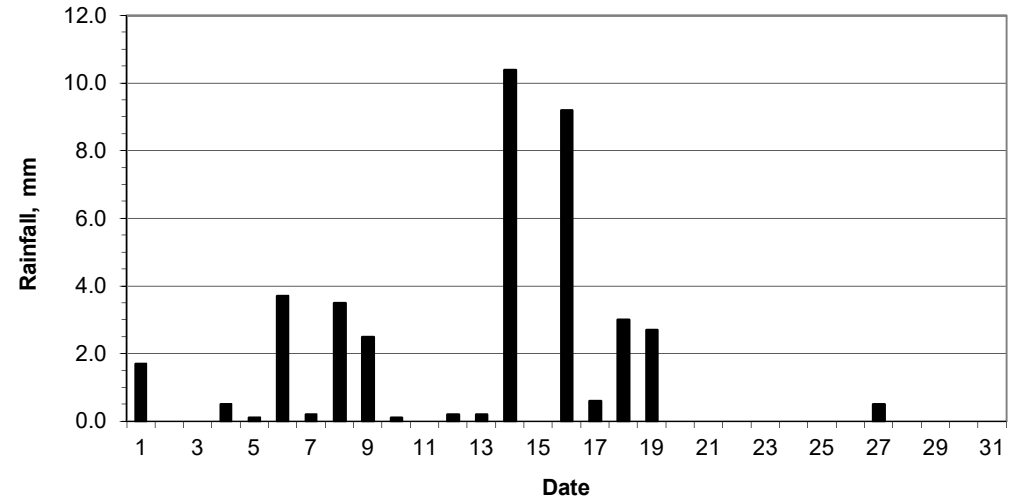
Mean sea level pressure, 0900GMT



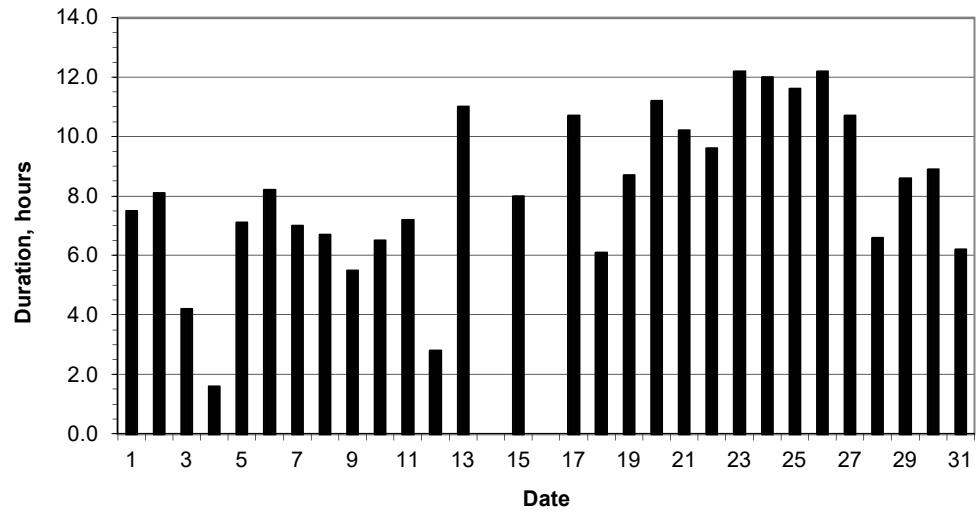
Daily temperature extremes



Daily rainfall



Daily sunshine



Daily evaporation

