

MAIDENHEAD METEOROLOGICAL OBSERVATIONS FOR AUGUST 2016

DD	N	dd	ff	ww	VV	0900GMT		Temperature			Soil temperatures (depth in cm)						E	SS	Rain	Sun	S	L	H	T	G	F	Press	Rain hrs	Fr. hrs	Pch Evap		
						Temp	RH	Max	Min	Gmin	5	10	20	30	50	100																
01	7	27	02	03	97	16.9	74	19.1	10.7	8.6	16.9	17.0	17.9	18.3	17.9	16.9	90	0	16.6	0.0	0	0	0	0	0	0	0	1021.0	14.6	0.0	1.0	Number of days with 2016 normal Snow/sleet falling 0 0.0 0.0 2.5 50% snow cover 09GMT 0 0.0 3.4 Hail or ice pellets 0 0.1 Thunder 0 2.1 Gale 0 0.0 Fog at 09GMT 0 0.1 Air frost 0 0.0 Ground frost 0 1.0 0.2mm precipitation 9 11.2 1.0mm precipitation 6 8.0 5.0mm precipitation 2 3.4 No sunshine 2 1.2 August started on a wet note, but then was largely dry. Almost half the month's rain fell on the 1st. It was also sunnier and warmer than normal, the warmest August since 2003 and the sunniest since 2005. The 25th dawned after the warmest August night since 2004.
02	8	22	05	21	96	18.7	96	20.5	14.2	13.6	17.2	17.2	17.5	17.8	17.5	16.9	20	0	4.9	0.0	0	0	0	0	0	0	1011.0	3.0	0.0	0.7		
03	7	22	05	03	97	19.5	77	25.3	16.9	15.6	17.9	18.3	18.5	18.1	17.5	16.9	10	0	0.1	8.9	0	0	0	0	0	0	1009.5	0.1	0.0	3.3		
04	7	27	09	02	97	18.9	72	23.0	14.8	12.4	17.1	17.3	18.1	18.5	17.8	16.8	10	0	0.0	5.5	0	0	0	0	0	0	1010.0	0.0	0.0	2.1		
05	6	27	02	02	97	20.8	61	24.0	12.0	9.2	15.6	16.2	17.5	18.3	17.7	16.8	10	0	0.0	10.4	0	0	0	0	0	0	1021.0	0.0	0.0	2.5		
06	1	27	02	02	97	21.7	59	27.0	11.2	9.3	15.6	16.2	17.6	18.4	17.8	16.9	10	0	0.0	13.2	0	0	0	0	0	0	1027.5	0.0	0.0	3.2		
07	7	22	09	02	97	22.2	76	25.9	17.5	14.3	20.2	19.6	19.0	19.0	18.1	16.9	00	0	0.0	9.9	0	0	0	0	0	0	1025.0	0.0	0.0	3.4		
08	6	27	09	02	97	20.4	54	22.8	14.1	11.1	16.7	17.3	18.6	18.9	18.3	17.0	90	0	0.0	9.6	0	0	0	0	0	0	1022.5	0.0	0.0	3.0		
09	0	31	09	02	97	18.1	53	21.0	10.0	8.0	14.7	15.7	17.7	17.7	18.4	17.0	90	0	0.0	8.6	0	0	0	0	0	0	1027.0	0.0	0.0	3.1		
10	7	31	05	03	97	16.4	65	19.9	9.8	8.0	15.6	16.1	17.2	17.2	17.9	17.0	90	0	0.0	1.0	0	0	0	0	0	0	1026.5	0.0	0.0	2.0		
11	7	27	02	02	97	17.5	70	24.7	14.6	13.3	16.6	17.0	17.6	17.6	17.6	16.9	90	0	0.0	4.6	0	0	0	0	0	0	1023.0	0.0	0.0	2.3		
12	6	27	05	02	97	20.1	76	27.4	13.2	11.0	16.4	16.8	17.9	17.9	18.0	16.8	90	0	0.0	11.5	0	0	0	0	0	0	1025.0	0.0	0.0	4.0		
13	8	22	05	02	97	18.8	77	25.7	13.9	11.2	17.8	17.7	18.4	18.4	18.5	16.8	90	0	0.0	7.8	0	0	0	0	0	0	1023.0	0.0	0.0	2.8		
14	7	36	02	02	97	18.9	63	22.9	15.3	13.1	18.7	18.3	18.4	18.4	18.3	16.8	90	0	0.0	4.6	0	0	0	0	0	0	1026.0	0.0	0.0	2.2		
15	0	36	02	02	97	20.1	61	25.7	9.8	8.0	15.0	15.6	17.1	17.1	17.8	16.9	90	0	0.0	12.0	0	0	0	0	0	0	1026.0	0.0	0.0	3.3		
16	5	36	02	02	97	18.8	76	25.4	11.4	9.0	15.4	16.1	17.5	17.5	17.9	16.9	90	0	0.0	12.9	0	0	0	0	0	0	1021.5	0.0	0.0	2.7		
17	2	04	02	02	97	20.4	74	26.6	12.7	10.2	16.2	16.7	17.6	17.9	17.6	16.9	90	0	0.0	11.1	0	0	0	0	0	0	1015.0	0.0	0.0	3.1		
18	7	04	02	02	97	19.7	75	25.9	16.1	13.9	18.2	18.2	18.5	18.3	17.7	16.8	90	0	0.5	2.3	0	0	0	0	0	0	1011.5	1.8	0.0	2.7		
19	8	13	02	60	96	18.1	93	18.3	17.3	10.8	18.3	18.8	19.0	18.5	17.7	16.9	10	0	4.3	1.4	0	0	0	0	0	0	1008.0	3.0	0.0	1.0		
20	8	18	13	80	97	18.0	78	21.1	14.6	11.9	16.2	16.3	17.7	17.8	17.6	16.9	10	0	3.4	5.7	0	0	0	0	0	0	1006.5	2.2	0.0	2.0		
21	6	27	02	25	97	17.7	80	23.0	15.0	13.9	16.8	17.0	17.4	17.8	17.5	16.9	10	0	2.0	5.0	0	0	0	0	0	0	1016.0	2.2	0.0	1.6		
22	7	22	05	02	97	19.3	83	24.4	16.7	15.0	17.8	17.6	17.9	18.0	17.5	16.9	10	0	0.0	3.2	0	0	0	0	0	0	1023.5	0.0	0.0	2.2		
23	2	13	02	02	97	21.1	70	30.1	12.2	10.8	15.6	16.1	17.5	18.1	17.6	16.9	10	0	0.0	12.7	0	0	0	0	0	0	1024.5	0.0	0.0	4.0		
24	2	00	00	02	97	25.1	66	32.6	16.6	14.2	17.3	17.8	18.5	18.6	17.9	16.9	10	0	0.3	9.3	0	0	0	0	0	0	1019.0	1.8	0.0	3.8		
25	7	04	05	02	97	22.6	74	27.0	19.3	17.0	19.5	19.7	20.0	19.5	18.4	17.0	10	0	0.2	4.4	0	0	0	0	0	0	1016.0	0.5	0.0	1.4		
26	4	31	02	02	97	21.4	72	27.5	17.7	15.4	18.4	19.3	19.9	19.6	18.7	17.1	00	0	0.0	11.2	0	0	0	0	0	0	1018.5	0.0	0.0	3.1		
27	7	04	05	03	97	20.9	76	26.7	13.5	12.1	18.5	18.4	18.9	19.2	18.7	17.3	90	0	tr	1.6	0	0	0	0	0	0	1017.5	0.0	0.0	2.0		
28	8	22	05	02	97	19.2	82	21.8	16.3	13.9	19.4	19.2	19.4	19.2	18.5	17.4	90	0	5.1	2.7	0	0	0	0	0	0	1012.0	1.6	0.0	1.0		
29	7	31	02	02	97	18.9	81	25.0	15.1	12.7	17.6	17.7	18.5	18.9	18.4	17.4	10	0	0.0	9.0	0	0	0	0	0	0	1021.5	0.0	0.0	2.0		
30	1	18	02	02	97	20.2	73	27.0	10.8	9.1	14.5	15.5	17.2	18.4	18.1	17.5	10	0	0.0	11.7	0	0	0	0	0	0	1025.5	0.0	0.0	3.1		
31	7	27	02	03	97	18.2	79	23.9	10.2	8.5	15.6	15.7	17.4	18.4	18.0	17.4	00	0	tr	5.9	0	0	0	0	0	0	1021.0	0.0	0.0	2.0		
Monthly means						19.6	73	24.6	14.0	11.8	17.0	17.3	18.1	18.3	18.0	17.0												1019.4				
Monthly totals																				37.4	217.7							30.8	0.0	76.6		
Highest values						25.1		32.6	19.3	17.0	20.2	19.7	20.0	19.6	18.7	17.5			16.6	13.2								14.6	0.0	4.0		
Lowest values						16.4	53	18.3	9.8	8.0	14.5	15.5	17.1	17.1	17.5	16.8																
1981-2010 monthly climatological averages						76	22.8	13.0	11.0	16.3	16.8	17.9	18.1	17.8	16.8					53.8	192.7								1016.0	34.1	0.0	71.3

Key

DD: date

07GMT observations

- N cloud cover (oktas, 9=obscured)
- ff wind speed (knots)
- ww present weather code
 - 1 cloud decreasing
 - 2 sky not changing
 - 3 cloud increasing
 - 5 haze
 - 10 mist
 - 21 recent rain
 - 25 recent rain shower
 - 50 intermittent slight drizzle
 - 61 continuous light rain
 - 63 continuous moderate rain

VV visibility (00-50 metres/100, 94 very poor, 95 poor, 96 moderate, 97 good)
Soil temperatures are for 0700GMT beneath bare soil (5, 10, 20cm) or grass (30, 50, 100cm)

09GMT observations

- Temp temperature (degC)
- E state of ground (00 dry, 10 moist, 20 wet, 90 cracked)
- Press air pressure (mb)
- RH relative humidity (%)
- SS snow depth (cm)

24 hour readings

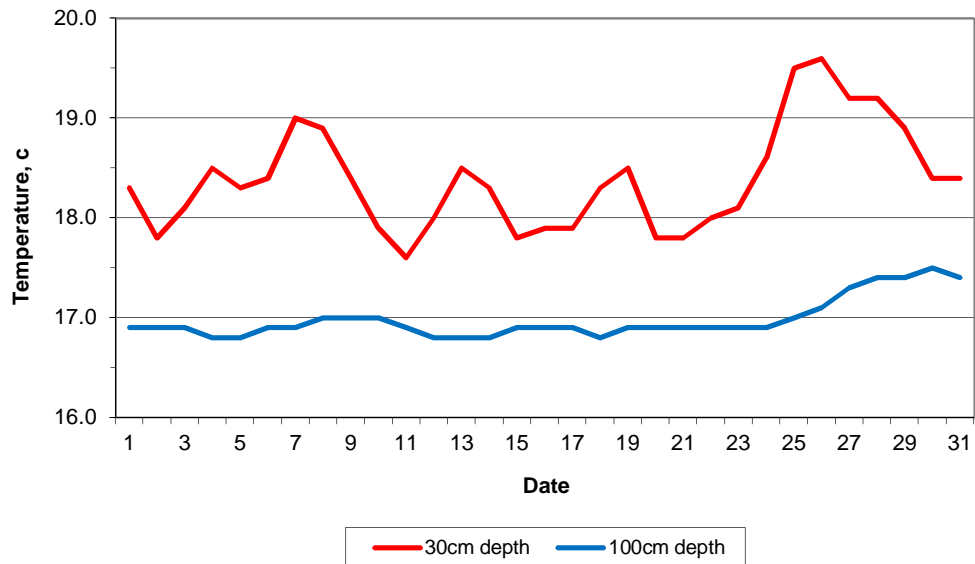
- Max maximum temperature (degC) beginning 09GMT
- Gmin grass minimum temperature (degC) ending 09GMT
- Sun sunshine (hours) sunrise-sunset
- Fr. Hrs hours of air frost (00-24GMT)
- Min minimum temperature (degC) ending 09GMT
- Rain precipitation beginning 09GMT
- Rain hrs hours of rainfall (>0.1mm/h) 09-09GMT
- Pch Evap Piche evaporation (ml) beginning 09GMT

Days with

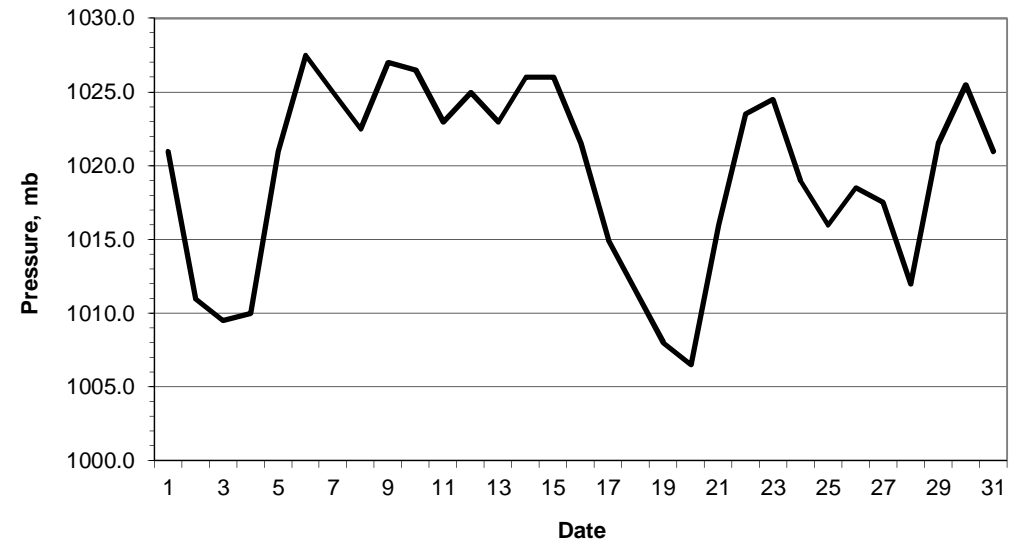
- S snow(5) or sleet(1) falling
- T thunder heard
- L 50% snow cover at 09GMT
- G gale
- H hail or ice pellets
- F fog at 09GMT

This information (and data for earlier months) is also available at <http://www.met.rdg.a.uk/~brugge>

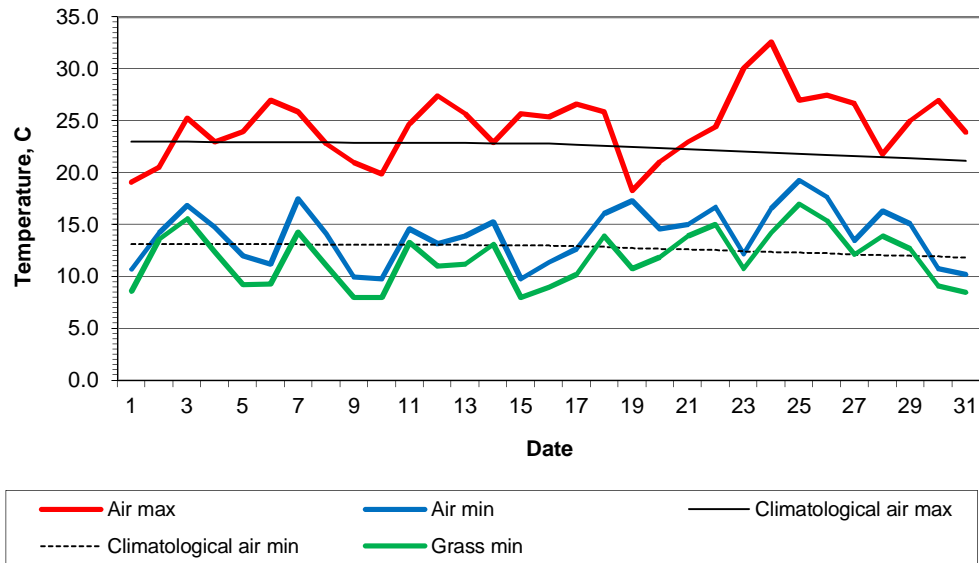
Daily soil temperatures, 0700GMT



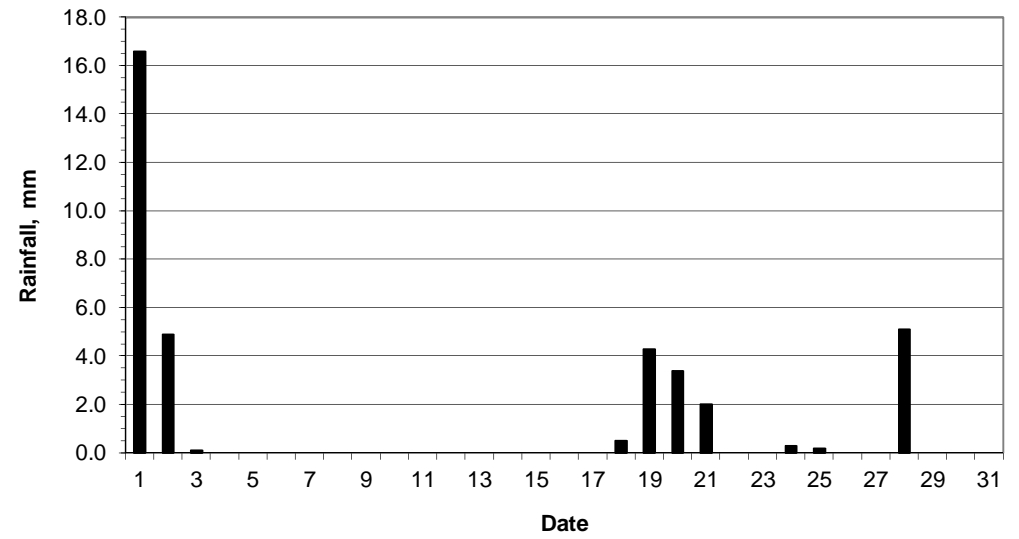
Mean sea level pressure, 0900GMT



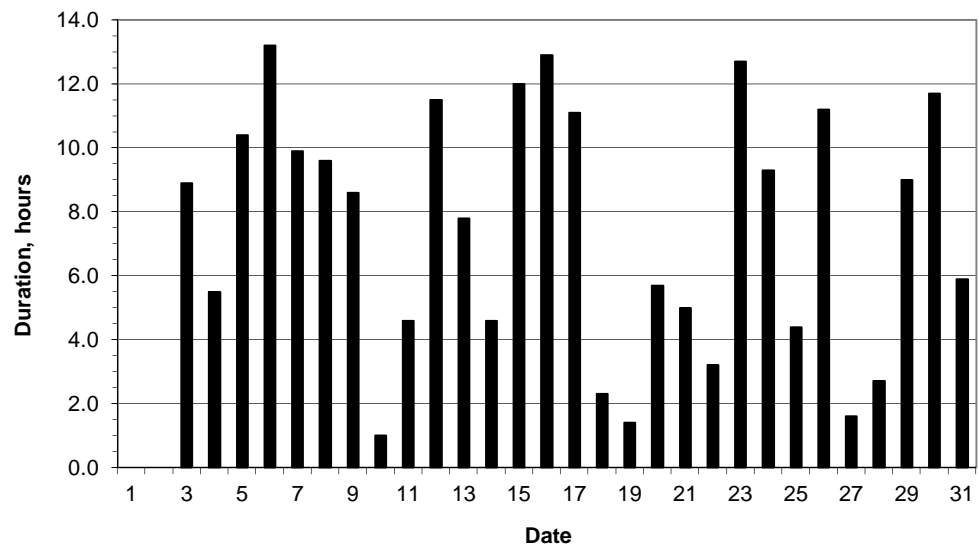
Daily temperature extremes



Daily rainfall



Daily sunshine



Daily evaporation

