

MAIDENHEAD METEOROLOGICAL OBSERVATIONS FOR AUGUST 2014

DD	N	dd	ff	ww	VV	0900GMT		Temperature			Soil temperatures (depth in cm)						E	SS	Rain	Sun	S	L	H	T	G	F	Press	Rain hrs	Fr. hrs	Pch Evap			
						Temp	RH	Max	Min	Gmin	5	10	20	30	50	100																	
01	7	18	02	02	97	20.4	79	25.0	14.6	11.6	18.9	19.4	20.0	19.8	19.0	17.6	00	0	0.0	2.9	0	0	0	0	0	0	0	1008.0	0.0	0.0	3.6	Number of days with 2014 normal Snow/sleet falling 0 0.0 50% snow cover 09GMT 0 0.0 Hail or ice pellets 0 0.1 Thunder 3 2.1 Gale 0 0.0 Fog at 09GMT 0 0.1 Air frost 0 0.0 Ground frost 0 0.0 0.2mm precipitation 19 11.2 1.0mm precipitation 17 8.0 5.0mm precipitation 4 3.4 No sunshine 2 1.2 August was cooler than average (but about 1.2 degC), making it the first cooler-than-average month since November 2013. It was also wetter than average with 19 rain days compared to an expected 11 rain days. This was the result of frequently cyclonic conditions with the average pressure being 5 mb lower than normal.	
02	7	18	05	02	97	19.0	83	23.0	15.4	13.9	19.9	19.5	19.8	19.6	18.8	17.6	00	0	4.0	4.1	0	0	0	0	0	0	1002.0	0.8	0.0	3.3			
03	2	22	09	03	97	19.0	68	24.2	9.4	8.4	15.8	16.3	17.9	19.1	18.6	17.7	10	0	0.0	12.6	0	0	0	0	0	0	1008.0	0.0	0.0	4.0			
04	7	27	02	02	97	19.6	74	24.8	11.7	9.9	15.7	16.7	18.2	19.0	18.5	17.6	10	0	0.0	6.1	0	0	0	0	0	0	1014.5	0.0	0.0	4.2			
05	6	18	02	03	97	18.6	78	23.4	11.0	9.4	16.2	17.1	18.2	18.8	18.4	17.5	00	0	5.8	2.6	0	0	0	0	0	0	1017.5	3.0	0.0	3.4			
06	8	18	02	02	96	20.1	87	25.9	17.0	15.4	18.3	18.3	18.9	18.7	18.4	17.5	10	0	0.0	10.6	0	0	0	0	0	0	1009.5	0.0	0.0	4.0			
07	0	00	00	02	97	21.7	75	27.0	12.7	10.2	16.1	17.2	18.4	18.9	18.3	17.5	10	0	0.0	11.9	0	0	0	0	0	0	1013.5	0.0	0.0	2.7			
08	6	09	02	02	97	20.6	76	25.0	14.8	11.9	16.9	17.6	18.6	19.0	18.4	17.4	10	0	13.4	2.4	0	0	0	0	0	0	1009.0	5.8	0.0	1.7			
09	7	27	09	02	97	18.6	85	23.5	12.3	10.1	17.2	17.3	18.3	18.3	18.9	17.4	10	0	4.1	9.0	0	0	0	0	0	0	993.5	4.2	0.0	2.6			
10	8	13	09	62	97	17.3	97	21.8	14.8	14.8	17.2	17.1	18.5	18.5	18.9	17.4	10	0	3.8	4.5	0	0	0	1	0	0	1007.0	1.8	0.0	1.9			
11	1	22	05	03	97	18.9	66	20.4	11.8	10.0	14.5	15.4	16.9	16.9	18.1	17.4	10	0	3.0	9.9	0	0	0	1	0	0	1007.5	1.1	0.0	1.9			
12	4	22	02	01	97	17.4	67	20.3	11.4	9.4	14.4	15.1	16.5	16.5	17.8	17.3	10	0	8.1	7.6	0	0	0	1	0	0	1004.5	2.1	0.0	1.9			
13	4	22	05	03	97	17.2	88	23.1	10.3	9.7	13.9	14.7	16.1	16.1	17.4	17.2	10	0	0.2	10.8	0	0	0	0	0	0	1009.5	0.3	0.0	2.0			
14	6	22	02	02	96	17.3	83	21.8	11.8	10.1	15.5	15.8	16.8	16.8	17.4	17.0	10	0	1.5	3.3	0	0	0	0	0	0	1015.0	2.0	0.0	1.3			
15	6	31	02	25	97	14.5	92	21.8	10.2	9.8	15.0	15.5	16.5	16.5	17.4	16.9	10	0	tr	3.2	0	0	0	0	0	0	1021.0	0.0	0.0	1.4			
16	6	27	05	02	97	16.6	81	21.4	9.7	8.8	14.1	14.8	16.1	16.1	17.2	16.8	10	0	0.0	7.8	0	0	0	0	0	0	1010.0	0.0	0.0	2.9			
17	8	22	09	02	97	15.4	84	21.4	14.0	12.9	15.7	16.0	16.5	17.0	17.0	16.7	10	0	1.0	7.2	0	0	0	0	0	0	1008.0	0.3	0.0	2.3			
18	7	27	05	25	97	15.8	78	21.7	10.7	8.9	13.6	14.1	15.5	16.8	16.9	16.7	10	0	4.2	5.9	0	0	0	0	0	0	1012.5	0.6	0.0	1.8			
19	1	27	02	02	97	15.3	66	20.6	9.8	8.5	13.1	14.0	15.5	16.6	16.8	16.6	10	0	0.1	10.7	0	0	0	0	0	0	1017.0	0.1	0.0	1.4			
20	0	31	02	02	97	15.7	71	20.2	6.6	5.1	11.7	12.8	14.7	16.3	16.5	16.5	10	0	0.0	9.2	0	0	0	0	0	0	1016.5	0.0	0.0	2.0			
21	3	31	02	03	97	15.0	73	18.1	6.4	5.3	11.6	12.7	14.6	16.1	16.4	16.3	10	0	0.8	5.5	0	0	0	0	0	0	1010.0	1.6	0.0	1.5			
22	7	27	02	02	97	15.0	87	21.0	11.7	7.8	14.1	14.4	15.3	16.0	16.3	16.3	10	0	1.9	7.8	0	0	0	0	0	0	1014.5	0.7	0.0	1.7			
23	1	27	02	02	97	15.6	76	19.6	7.2	6.1	13.3	13.7	15.0	16.1	16.0	16.1	10	0	tr	7.7	0	0	0	0	0	0	1019.0	0.0	0.0	1.5			
24	7	31	02	03	97	12.3	90	18.0	5.9	4.1	12.2	13.2	14.0	15.7	15.8	16.1	10	0	1.7	3.9	0	0	0	0	0	0	1008.0	4.5	0.0	1.6			
25	8	13	09	50	96	14.4	98	17.0	12.3	9.8	14.5	14.7	15.3	15.8	15.6	15.9	10	0	17.0	0.0	0	0	0	0	0	0	1008.0	9.7	0.0	0.2			
26	7	09	02	02	96	15.6	99	16.8	12.7	10.3	14.8	14.8	15.5	15.7	15.5	15.8	10	0	3.5	0.0	0	0	0	0	0	0	1003.0	2.1	0.0	0.4			
27	7	09	02	03	97	16.0	84	19.5	9.2	7.0	12.7	13.2	15.4	15.5	15.4	15.7	10	0	2.6	1.7	0	0	0	0	0	0	1015.0	4.5	0.0	1.2			
28	8	27	02	60	96	17.4	97	22.3	16.0	12.5	16.4	16.1	16.0	15.8	15.6	15.6	10	0	0.0	4.9	0	0	0	0	0	0	1010.5	0.0	0.0	1.4			
29	4	22	09	03	97	17.3	80	21.1	13.0	9.9	14.9	15.2	15.9	16.2	16.0	15.7	10	0	1.0	4.4	0	0	0	0	0	0	1012.5	0.4	0.0	2.5			
30	6	27	05	02	97	15.9	80	20.5	13.8	12.5	16.1	16.0	16.3	16.5	16.0	15.6	10	0	tr	3.1	0	0	0	0	0	0	1014.0	0.0	0.0	1.7			
31	7	31	05	02	97	16.6	79	22.6	10.8	9.2	13.9	14.6	16.0	16.6	16.1	15.7	10	0	1.6	9.8	0	0	0	0	0	0	1017.5	3.0	0.0	1.8			
Monthly means						17.1	81	21.7	11.6	9.8	15.1	15.6	16.7	17.1	17.2	16.7												1010.8					
Monthly totals																					79.3	191.1						48.6	0.0	65.8			
Highest values						21.7		27.0	17.0	15.4	19.9	19.5	20.0	19.8	19.0	17.7				17.0	12.6							9.7	0.0	4.2			
Lowest values						12.3	66	16.8	5.9	4.1	11.6	12.7	14.0	15.5	15.4	15.6																	
1981-2010 monthly climatological averages						76	22.8	13.0	11.0	16.3	16.8	17.9	18.1	17.8	16.8						53.8	192.7							1016.0	34.1	0.0	71.3	

Key

DD: date

07GMT observations

- N cloud cover (oktas, 9=obscured)
- ff wind speed (knots)
- ww present weather code
  - 1 cloud decreasing
  - 2 sky not changing
  - 3 cloud increasing
  - 5 haze
  - 10 mist
- 21 recent rain
- 25 recent rain shower
- 50 intermittent slight drizzle
- 61 continuous light rain
- 63 continuous moderate rain

VV visibility (00-50 metres/100, 94 very poor, 95 poor, 96 moderate, 97 good)

Soil temperatures are for 0700GMT beneath bare soil (5, 10, 20cm) or grass (30, 50, 100cm)

09GMT observations

- Temp temperature (degC)
- E state of ground (00 dry, 10 moist, 20 wet, 90 cracked)
- Press air pressure (mb)
- RH relative humidity (%)
- SS snow depth (cm)

24 hour readings

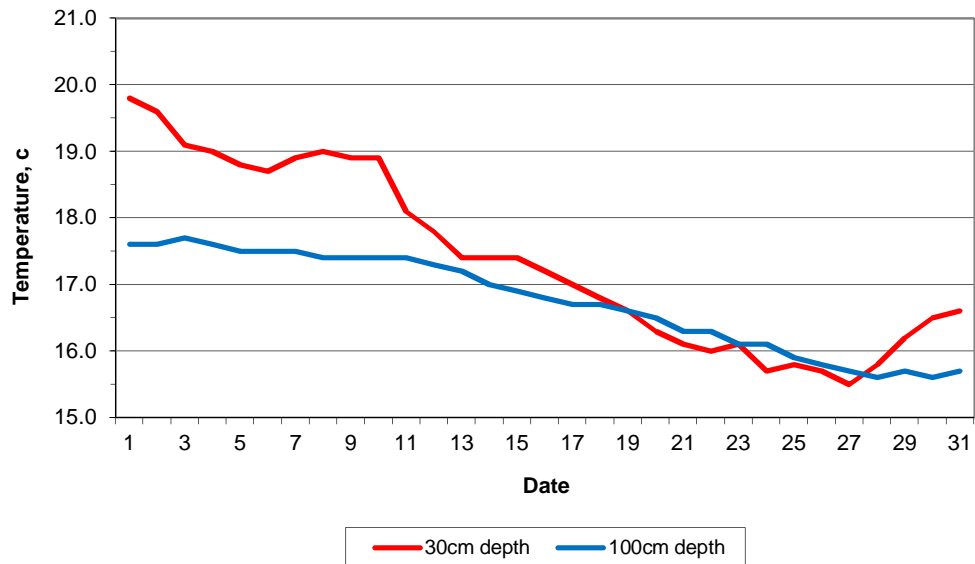
- Max maximum temperature (degC) beginning 09GMT
- Gmin grass minimum temperature (degC) ending 09GMT
- Sun sunshine (hours) sunrise-sunset
- Fr. Hrs hours of air frost (00-24GMT)
- Min minimum temperature (degC) ending 09GMT
- Rain precipitation beginning 09GMT
- Rain hrs hours of rainfall (>0.1mm/h) 09-09GMT
- Pch Evap Piche evaporation (ml) beginning 09GMT

Days with

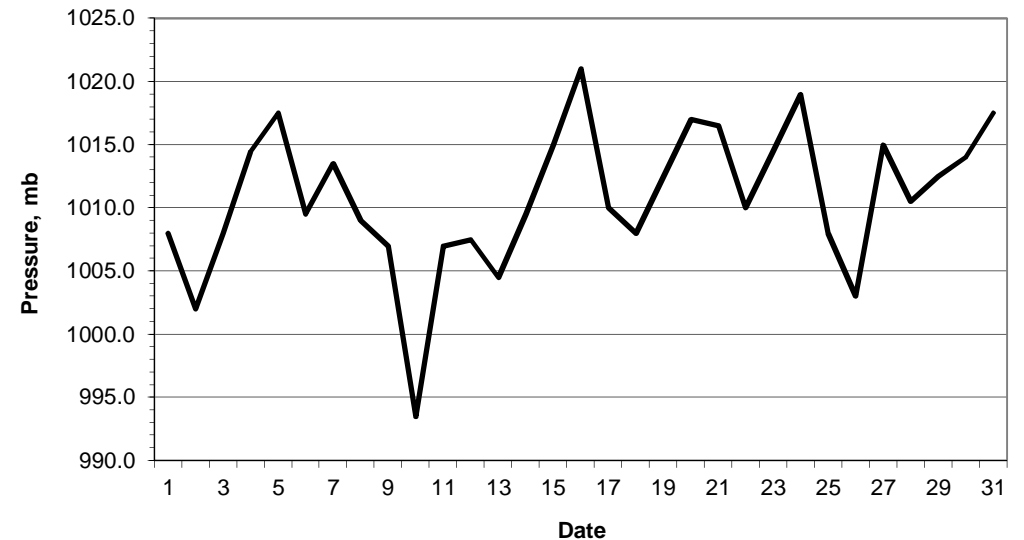
- S snow(5) or sleet(1) falling
- L 50% snow cover at 09GMT
- H hail or ice pellets
- T thunder heard
- G gale
- F fog at 09GMT

This information (and data for earlier months) is also available at <http://www.met.rdg.a.uk/~brugge>

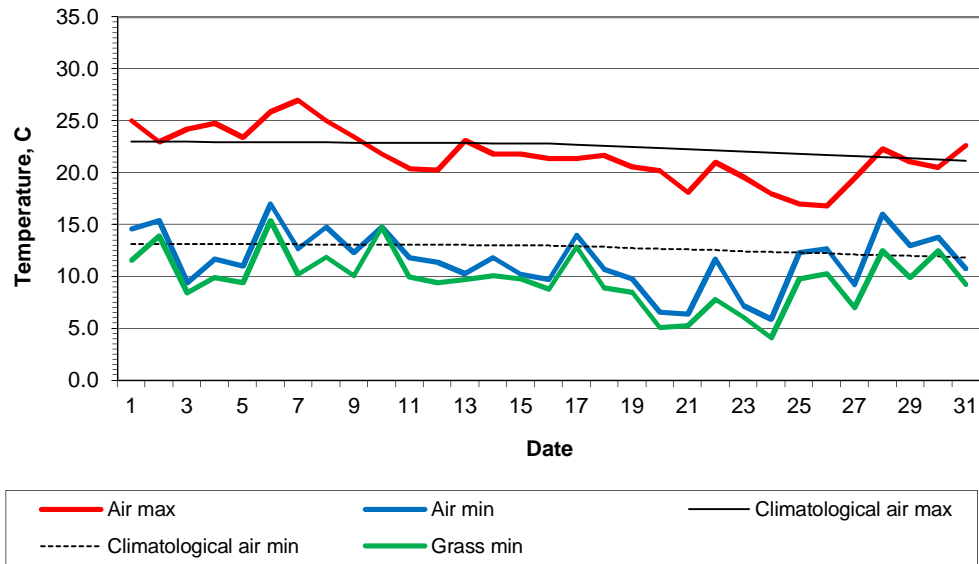
Daily soil temperatures, 0700GMT



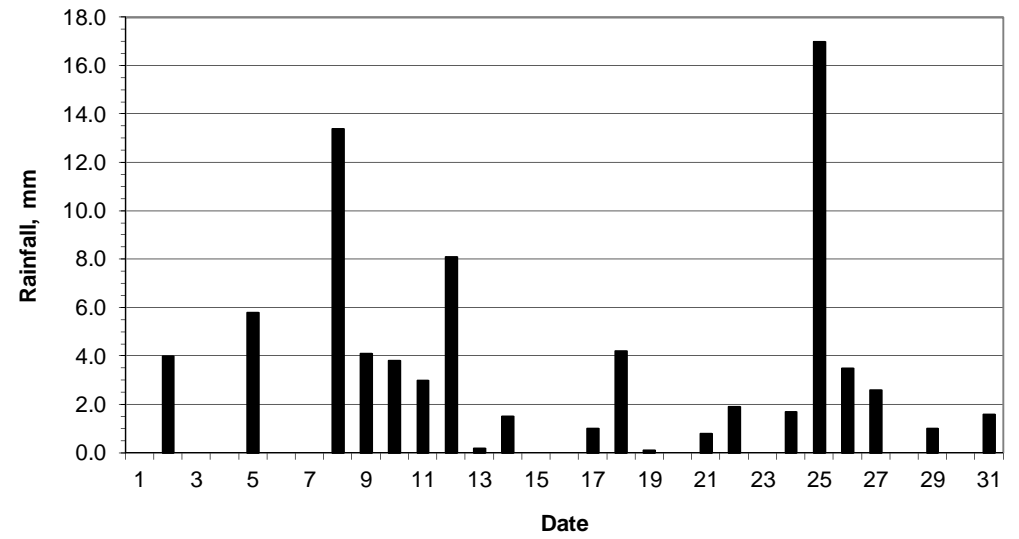
Mean sea level pressure, 0900GMT



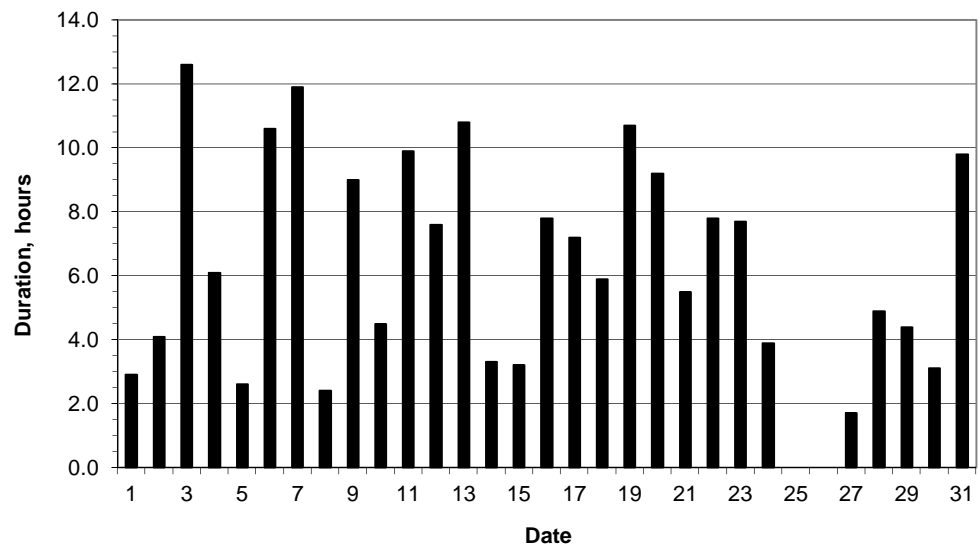
### Daily temperature extremes



### Daily rainfall



### Daily sunshine



### Daily evaporation

