

MAIDENHEAD METEOROLOGICAL OBSERVATIONS FOR AUGUST 2013

DD	N	dd	ff	ww	VV	0900GMT		Temperature			Soil temperatures (depth in cm)						E	SS	Rain	Sun	S	L	H	T	G	F	Press	Rain	Fr.	Pch			
						Temp	RH	Max	Min	Gmin	5	10	20	30	50	100												hrs	hrs	Evap			
01	3	09	02	01	96	25.1	71	31.8	16.8	14.2	18.3	18.8	19.0	19.0	18.1	16.9	10	0	0.1	13.3	0	0	0	0	0	0	1010.5	0.1	0.0	4.5	Number of		
02	7	18	05	21	97	20.7	88	26.0	16.8	13.8	19.3	19.9	20.4	20.0	18.5	16.9	10	0	0.1	5.6	0	0	0	0	0	0	1007.5	0.2	0.0	2.6	days with		
03	6	22	05	03	97	20.4	63	24.5	15.2	12.5	18.2	18.3	19.2	19.6	18.6	17.0	10	0	tr	11.3	0	0	0	0	0	0	1013.5	0.0	0.0	2.6	2013 normal		
04	6	18	05	02	97	21.7	64	24.2	15.0	12.3	18.9	18.8	19.2	19.3	18.5	17.1	00	0	0.1	4.2	0	0	0	0	0	0	1019.0	0.2	0.0	3.8	Snow/sleet falling		
05	8	13	02	02	97	20.9	60	23.0	16.5	15.0	18.3	18.9	19.6	19.4	18.6	17.1	00	0	21.2	1.0	0	0	0	0	0	0	1011.5	3.3	0.0	1.3	0 0.0		
06	3	27	02	02	97	19.1	77	22.7	10.6	8.4	15.6	16.4	17.9	18.6	18.4	17.0	10	0	tr	8.7	0	0	0	0	0	0	1017.0	0.0	0.0	2.2	50% snow cover 09GMT		
07	6	27	02	02	97	19.1	64	23.2	12.5	10.7	16.4	17.1	18.1	18.6	18.0	17.0	10	0	0.0	7.2	0	0	0	0	0	0	1013.5	0.0	0.0	2.6	0 0.0		
08	0	00	00	02	97	23.2	54	24.9	10.2	7.4	15.0	15.9	17.4	18.1	17.7	16.9	10	0	0.6	8.8	0	0	0	0	0	0	1020.0	1.2	0.0	3.7	Hail or ice pellets		
09	8	36	05	02	96	19.8	86	25.0	16.3	10.7	18.1	18.3	18.7	18.7	18.6	16.9	10	0	tr	6.5	0	0	0	0	0	0	1022.5	0.0	0.0	2.5	0 0.1		
10	7	27	02	02	97	17.8	71	23.1	13.2	9.4	17.3	17.4	18.1	18.1	18.5	16.8	00	0	0.0	4.5	0	0	0	0	0	0	1018.5	0.0	0.0	2.9	Thunder		
11	7	22	02	02	97	19.5	75	24.1	15.7	12.0	18.3	18.1	18.4	18.4	18.4	16.8	00	0	0.0	8.4	0	0	0	0	0	0	1017.0	0.0	0.0	2.4	0 2.1		
12	8	22	02	02	97	18.9	65	23.0	12.3	10.9	16.6	17.2	18.1	18.1	18.4	16.8	00	0	0.0	7.1	0	0	0	0	0	0	1022.5	0.0	0.0	2.7	Gale		
13	8	27	02	02	97	16.0	69	22.9	9.7	7.4	15.6	16.2	17.5	17.5	18.0	16.8	00	0	tr	2.5	0	0	0	0	0	0	1024.5	0.0	0.0	1.8	0 0.0		
14	3	00	00	02	96	19.5	70	23.0	9.8	8.1	15.1	15.9	17.3	17.3	17.8	16.8	00	0	1.4	6.3	0	0	0	0	0	0	1019.5	2.0	0.0	1.5	Fog at 09GMT		
15	8	18	02	02	96	18.8	92	23.2	11.3	10.8	17.5	17.9	18.3	18.3	18.0	16.6	10	0	2.8	2.9	0	0	0	0	0	0	1014.5	2.7	0.0	1.4	0 0.1		
16	8	18	02	21	97	17.9	92	24.0	16.9	14.5	18.0	18.1	18.5	18.5	18.2	16.6	10	0	1.7	3.7	0	0	0	0	0	0	1013.5	2.0	0.0	1.2	Air frost		
17	8	22	05	02	97	17.7	74	20.2	13.2	10.5	17.2	17.1	17.7	18.0	17.4	16.6	10	0	1.8	1.4	0	0	0	0	0	0	1009.5	1.0	0.0	1.5	0 0.0		
18	7	22	05	02	97	19.0	77	23.9	15.0	13.3	17.4	17.2	17.5	17.8	17.3	16.6	10	0	tr	3.0	0	0	0	0	0	0	1019.0	0.0	0.0	2.2	Ground frost		
19	7	00	00	02	97	20.0	64	23.0	10.4	6.6	15.0	15.6	17.0	17.7	17.3	16.5	10	0	0.0	9.1	0	0	0	0	0	0	1028.0	0.0	0.0	2.6	0 0.0		
20	7	00	00	03	97	20.3	61	25.5	10.5	6.9	15.0	15.6	16.9	17.5	17.2	16.5	00	0	0.0	9.7	0	0	0	0	0	0	1025.0	0.0	0.0	3.0	0.2mm precipitation		
21	7	00	00	03	96	19.5	63	27.3	10.2	7.6	15.4	16.3	17.5	17.8	17.3	16.5	00	0	2.2	9.8	0	0	0	0	0	0	1020.0	3.6	0.0	3.4	9 11.2		
22	8	36	02	21	96	19.2	91	22.9	12.0	11.0	18.2	18.4	19.0	18.4	17.7	16.5	10	0	tr	3.4	0	0	0	0	0	0	1015.5	0.0	0.0	1.8	1.0mm precipitation		
23	5	09	05	03	96	21.0	73	27.3	14.5	11.1	16.9	17.3	18.1	18.2	17.6	16.6	10	0	0.6	4.7	0	0	0	0	0	0	1011.0	2.4	0.0	2.4	7 8.0		
24	8	31	02	21	96	17.5	90	19.4	14.5	14.0	18.4	18.7	19.0	18.5	17.7	16.6	10	0	7.1	0.2	0	0	0	0	0	0	1012.0	3.6	0.0	1.3	5.0mm precipitation		
25	8	31	02	21	95	16.0	96	24.1	13.4	12.5	16.4	16.6	17.7	17.9	17.5	16.6	10	0	0.1	6.0	0	0	0	0	0	0	1012.0	0.1	0.0	1.8	2 3.4		
26	8	00	00	02	96	19.1	82	26.7	14.6	11.2	17.2	17.1	17.6	17.8	17.4	16.7	10	0	0.0	7.6	0	0	0	0	0	0	1019.5	0.0	0.0	2.7	No sunshine		
27	8	36	02	42	07	18.3	77	24.5	10.7	8.0	15.5	16.1	17.5	18.0	17.4	16.6	00	0	0.0	10.4	0	0	0	0	0	0	1019.0	0.0	0.0	2.7	0 1.2		
28	7	00	00	02	07	17.5	81	25.9	10.1	7.0	15.9	16.2	17.2	17.8	17.5	16.6	00	0	0.0	8.5	0	0	0	0	0	0	1023.5	0.0	0.0	2.0	The warmest August since		
29	6	27	05	02	97	21.0	64	25.3	13.4	10.1	16.5	17.0	18.5	18.0	17.6	16.6	00	0	0.0	10.5	0	0	0	0	0	0	1022.5	0.0	0.0	2.5	2004 although there have been		
30	7	21	05	03	97	20.3	77	24.7	14.2	10.6	16.5	17.0	18.9	18.3	17.7	16.6	00	0	0.0	9.0	0	0	0	0	0	0	1019.5	0.0	0.0	2.5	no recent really hot Augusts -		
31	5	36	05	02	97	16.7	61	21.5	13.5	9.9	16.0	16.5	18.7	18.3	17.7	16.8	00	0	0.0	11.5	0	0	0	0	0	0	1026.0	0.0	0.0	2.9	with the 1st reaching 31.8 C.		
Monthly means						19.4	74	24.2	13.2	10.6	16.9	17.3	18.2	18.3	17.9	16.7												1017.6				Over half the rain fell in about	
Monthly totals																				39.8	206.8							22.4	0.0	75.0	3 h on the 5th - although there		
Highest values																																were no thunderstorms this	
Lowest values						25.1		31.8	16.9	15.0	19.3	19.9	20.4	20.0	18.6	17.1			21.2	13.3									3.6	0.0	4.5	to make the month slightly	
1981-2010 monthly climatological averages						16.0	54	19.4	9.7	6.6	15.0	15.6	16.9	17.3	17.2	16.5																	was the sunniest Augst since
						76	22.8	13.0	11.0	16.3	16.8	17.9	18.1	17.8	16.8				53.8	192.7								1016.0	34.1	0.0	71.3	2007.	

Key

DD: date

07GMT observations

- N cloud cover (oktas, 9=obscured)
- ff wind speed (knots)
- ww present weather code
 - 1 cloud decreasing
 - 2 sky not changing
 - 3 cloud increasing
 - 5 haze
 - 10 mist
 - 21 recent rain
 - 25 recent rain shower
 - 50 intermittent slight drizzle
 - 61 continuous light rain
 - 63 continuous moderate rain

VV visibility (00-50 metres/100, 94 very poor, 95 poor, 96 moderate, 97 good)

Soil temperatures are for 0700GMT beneath bare soil (5, 10, 20cm) or grass (30, 50, 100cm)

09GMT observations

- Temp temperature (degC)
- E state of ground (00 dry, 10 moist, 20 wet, 90 cracked)
- Press air pressure (mb)
- RH relative humidity (%)
- SS snow depth (cm)

24 hour readings

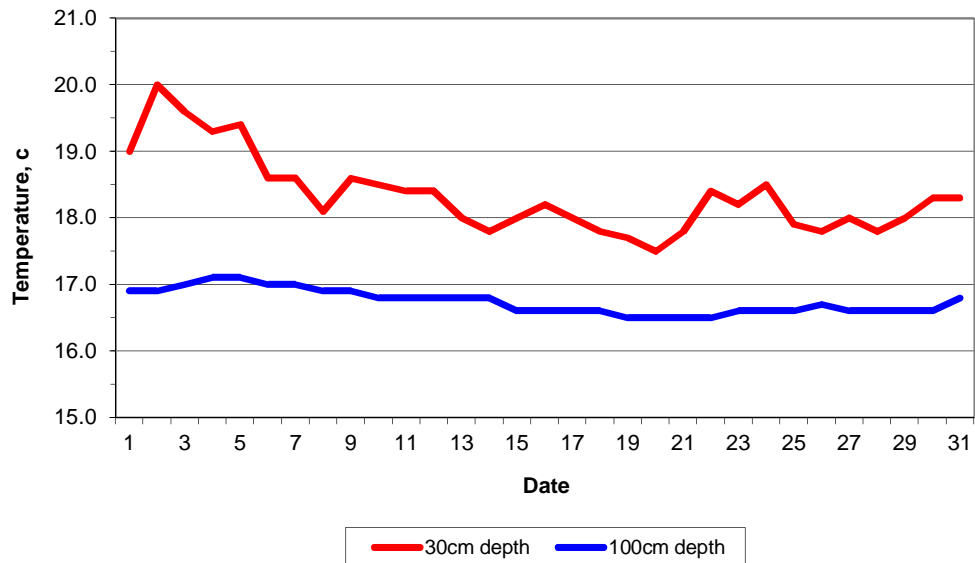
- Max maximum temperature (degC) beginning 09GMT
- Gmin grass minimum temperature (degC) ending 09GMT
- Sun sunshine (hours) sunrise-sunset
- Fr. Hrs hours of air frost (00-24GMT)
- Min minimum temperature (degC) ending 09GMT
- Rain precipitation beginning 09GMT
- Rain hrs hours of rainfall (>0.1mm/h) 09-09GMT
- Pch Evap Piche evaporation (ml) beginning 09GMT

Days with

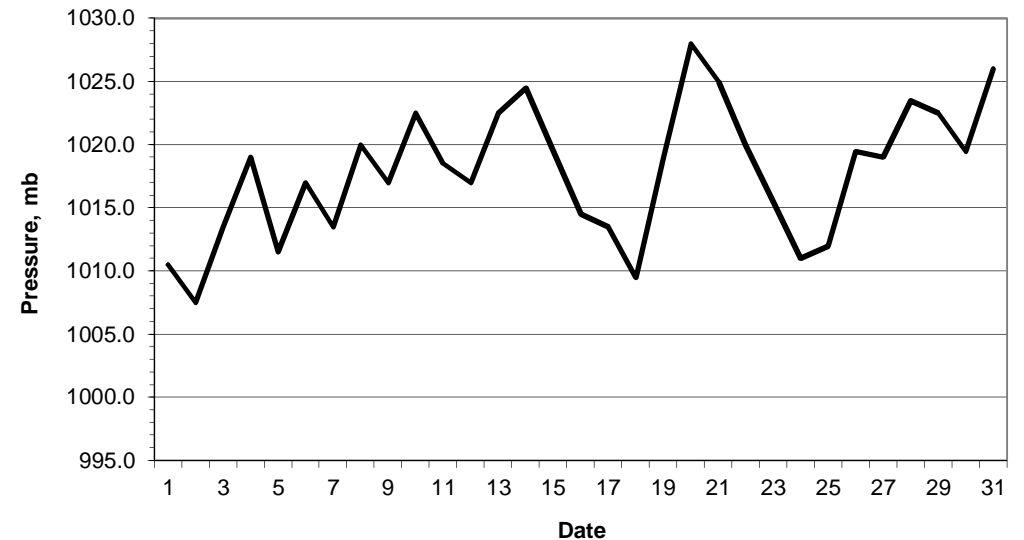
- S snow(5) or sleet(1) falling
- T thunder heard
- L 50% snow cover at 09GMT
- G gale
- H hail or ice pellets
- F fog at 09GMT

This information (and data for earlier months) is also available at <http://www.met.rdg.a.uk/~brugge>

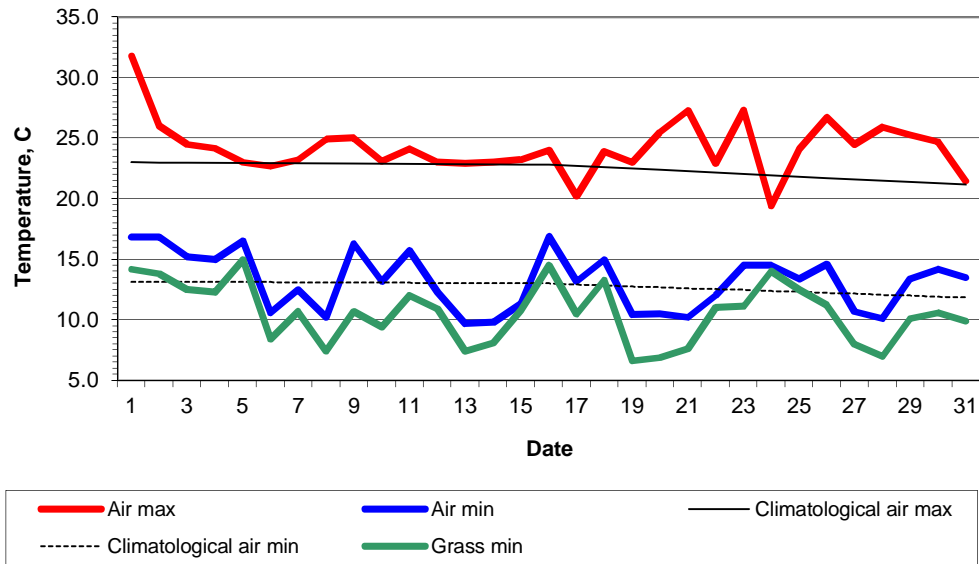
Daily soil temperatures, 0700GMT



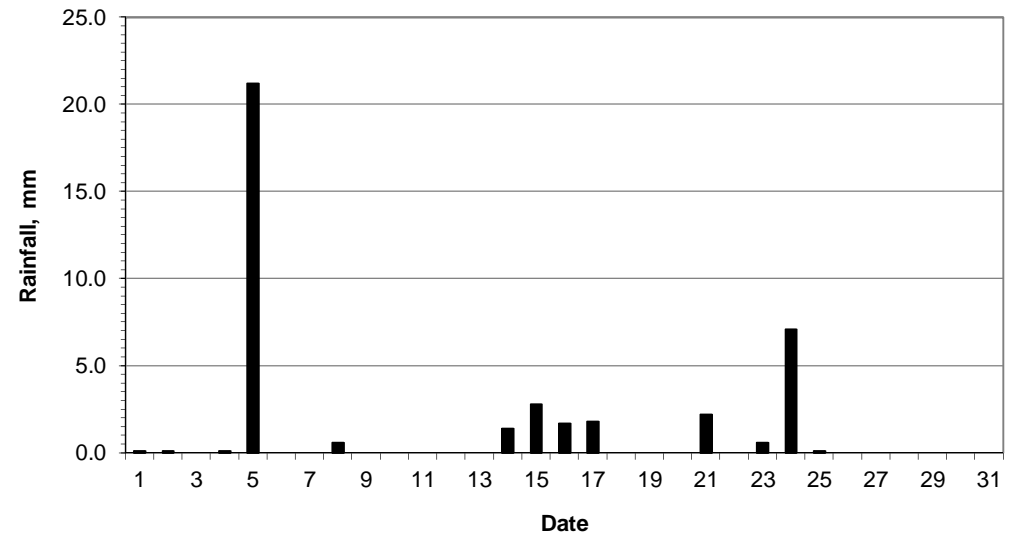
Mean sea level pressure, 0900GMT



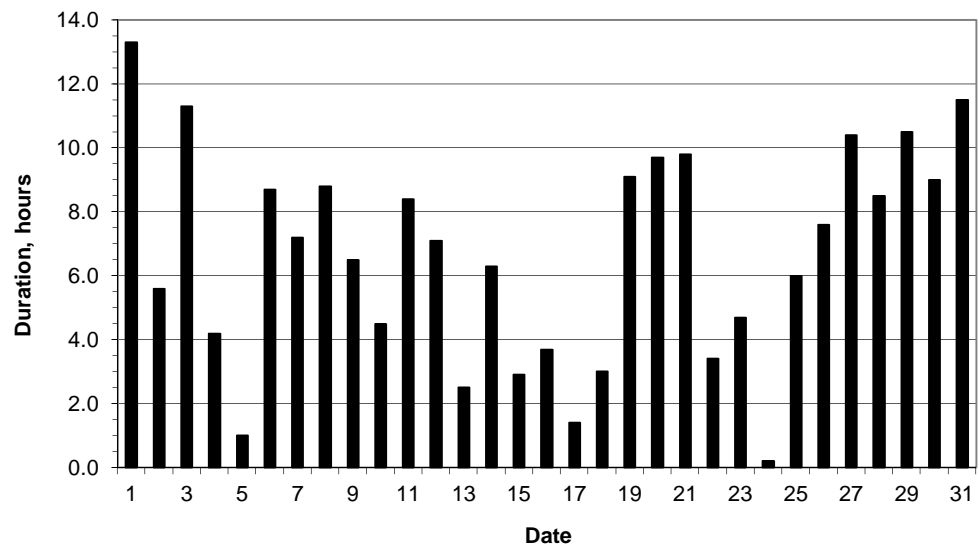
Daily temperature extremes



Daily rainfall



Daily sunshine



Daily evaporation

